

MPACT®

MMR - Marine Retrofit Sleeve

Two-piece steel shell allows for retrofit of block-and-frame transit systems where sealing blocks have been removed. The steel shell is inserted into the existing transit frame and filled with MFB-B Marine Filler Blanket and MFS Marine Firestop Sealant to restore non-compliant penetration seals.

Product Features

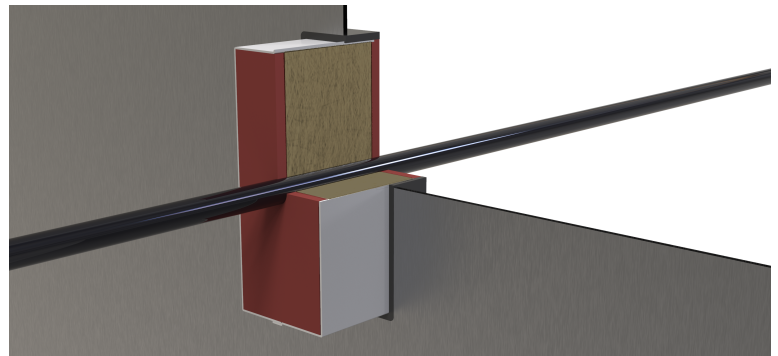
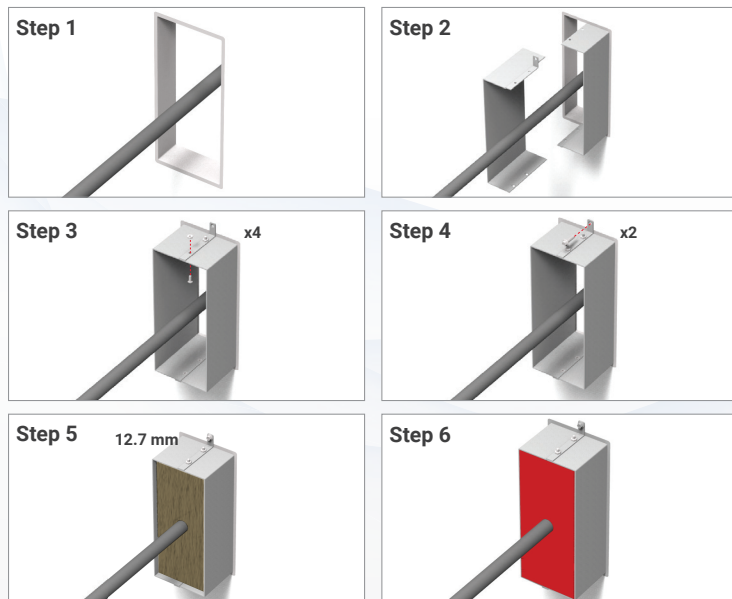
- Tested to 2010 IMO FTP, Annex 1, Part 3 (Class A-0 through A-60 divisions Bulkheads and Decks)
- Fits into existing #6 and #8 Frames
- Quick and Easy to Install
- Two-piece design accommodates existing cables
- Provides Water and Gastightness

Installation Instructions

General Notes: Read Safety Data Sheets (SDS) and product label for safe handling. For further information regarding installation requirements, please refer to Installation Sheet No. ZIS1287 and the corresponding Type Approvals.

- Step 1: Remove all blocks from transit frame. All surfaces shall be clean, sound, dry, frost-free, and free of bond-breaking contaminants and loose material.
- Step 2: Insert Retrofit Sleeve halves as into transit frame.
- Step 3: Fasten sleeve halves together using provided screws and nuts.
- Step 4: Attach assembled sleeve to steel division using two screws or tack welds.
- Step 5: Install and center MFB-B Marine Filler Blanket.
- Step 6: Install 12.7 mm thickness of MFS Marine Firestop Sealant on both ends.

Note: For water and gastightness, maintain a min. 6 mm spacing and apply a bead of MFS Firestop Sealant over all outer seams between the steel frame and Retrofit Sleeve and between sleeve halves. Refer to approval for additional information.



PHYSICAL PROPERTIES

Shell Construction	Pre-galvanized Steel Shell
Shelf Life	No limit
Weight (MMR600)	1.36 kg (3.00 lbs)
Weight (MMR800)	1.59 kg (3.50 lbs)

Limitations

This product has been designed to be safe with plastics. It has been used extensively and successfully with various types of plastic pipes, tubes, and plastic cable insulations. Variations in these materials, however, make it impossible to guarantee compatibility. STI strongly recommends that the user consults with the pipe, tubing, or cable manufacturer in question regarding any known sensitivities or potential restrictions before applying this product.

Maintenance

Maintenance free. Observed damage can be repaired per the original approved design.

Third Party Approvals



ORDERING INFORMATION

Catalog Number	UPC Number	Description	(UOM) Qty.	Case Qty.	Weight (Each)
MMR600	730573440087	MPACT® Marine Retrofit Sleeve - #6 Frame	1	6	1.36 kg (3.00 lbs)
MMR800	730573440094	MPACT® Marine Retrofit Sleeve - #8 Frame	1	6	1.59 kg (3.50 lbs)
MMR601K	730573440124	MPACT® Marine Retrofit Sleeve Kit - #6 Frame	1	1	4.99 kg (11.00 lbs)
MMR801K	730573440131	MPACT® Marine Retrofit Sleeve Kit - #8 Frame	1	1	5.48 kg (12.10 lbs)



Issues with block and frame transit systems generally relate to ongoing maintenance over time, due to the complicated block arrangement and cable layout. Addition and removal of cables can result in blocks being improperly reinstalled, and in some cases, not reinstalled at all.