



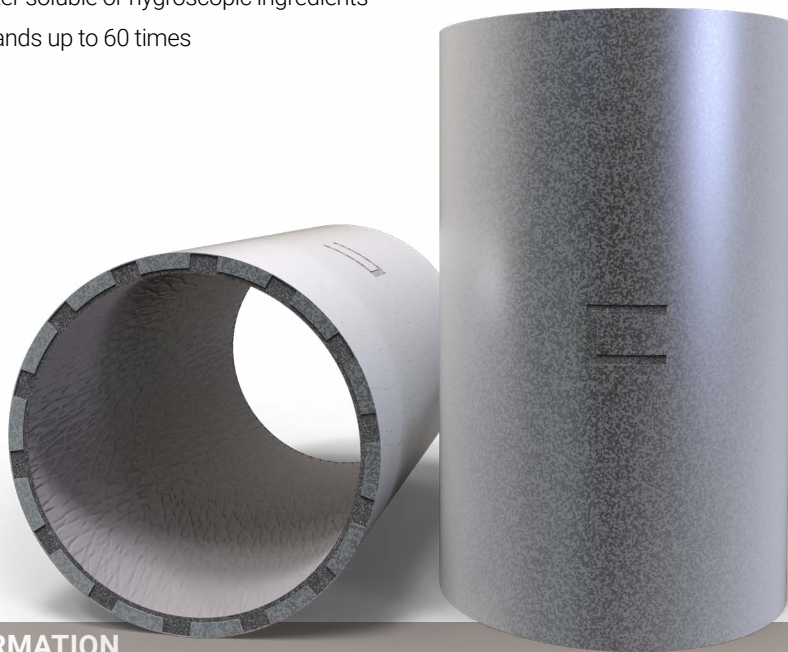
FACTORY ASSEMBLED INTUMESCENT SLEEVE

# Intumescent Sleeve

SpecSeal® Intumescent Sleeve is a factory manufactured device designed to protect metallic and plastic pipes penetrating through fire rated floors. Utilizing a flexible steel sleeve body and molded intumescent lining, the SpecSeal® Intumescent Sleeve wraps around pipes ranging from 2 in. to 4 in.

## Features & Benefits

- Rapid expansion - closes off burning pipes quickly
- Thin profile - use it in all the tight spots
- Flexible & durable - no loose flakes (eye hazards)
- Water resistant - no water soluble or hygroscopic ingredients
- High volume char - expands up to 60 times



## ORDERING INFORMATION

| Catalog Number | UPC Number   | Size   | (UOM) Qty. | Case Qty. | Weight (Each)      |
|----------------|--------------|--|------------|-----------|--------------------|
| SIS240         | 730573039526 | Intumescent Sleeve for 2" - 4"<br>(51 mm - 102 mm) Trade Size pipe | 1          | 6         | 1.87 lbs (0.85 kg) |

TEST STANDARDS: ASTM E814 (UL1479), CAN/ULC-S115



1-800-992-1180  
stifirestop.com



[Click here to learn more about](#)



ZSTI3594 30021