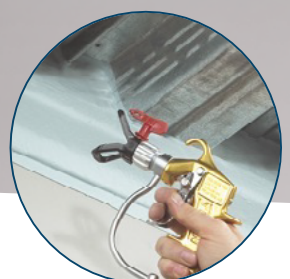


Product User Guide

Firestop Solutions



**Specified
Technologies Inc.**
Firestop, Smoke, & Sound Solutions



Putting products and resources
to work for you



For 35 years, Specified Technologies Inc. has worked closely with the construction industry to create simple solutions to complex firestopping problems across a broad range of market segments and industries worldwide.

We offer the most comprehensive range of firestop products on the market and back them with the most UL® tested systems in the business—over 1,400—from penetration firestop systems and perimeter containment solutions to static and dynamic construction joints.

Because firestopping is our exclusive focus, we have been at the forefront of developing the most advanced and cost-effective firestop solutions on the market. STI is committed to supporting customers by providing sustainable firestop solutions, treating them like partners, and by consistently adding value beyond the sale.

You can depend on STI to provide expert advice, superior performance, premium quality products, best-in-class service, and training and support while delivering a total firestop solution.

Global presence

Specified Technologies Inc. has offices and representation throughout the United States, Canada, Europe, the Middle East, India, China, Southeast Asia, and Latin America. We partner with over forty independent rep agencies and work with over 1,000 distribution outlets worldwide, providing extensive international coverage and offering our customers the personal attention they deserve.



Notable projects



One World Trade Center, New York, NY



Comcast Tower, Philadelphia, PA



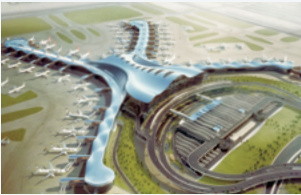
Al Dar Headquarters, Abu Dhabi



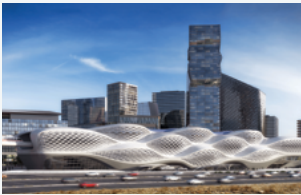
Petronas Twin Towers, Kuala Lumpur, Malaysia



Cern-Meyrin, Switzerland



Abu Dhabi Airport, UAE



King Abdallah Financial District, Saudi Arabia



Pentagon, Washington, DC



Boeing Aircraft, Renton, WA



Barclays Center, Brooklyn, NY



Baha Mar Casino & Hotel, Nassau, Bahamas



Harrah's, New Orleans, LA



Cleveland Clinic, Cleveland, OH



Parkland Memorial Hospital, Dallas, TX



Stanford University, Palo Alto, CA

ACCESS STI

One Key. All Access.



Specified Technologies Inc. provides a toolbox of innovative online programs to remove the complexity of designing firestop systems. A set of powerful tools assure that the right systems are selected for the fastest and most cost-effective installation.



Barrier management with built-in compliance.

The goal of the Barrier Management Program is to prepare and mitigate possible issues through detection and suppression of potential future loss from fire. The program does this by setting expectations for all parties involved including vendors, contractors, and facility maintenance personnel to maintain a specific set of Firestop Systems for installation and inspection of assemblies to have a better understanding when situations of non-compliance might arise.



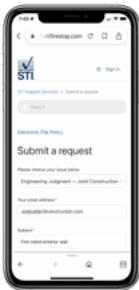
Find firestop systems on your phone, tablet, or the web.

- Find firestop systems on your phone, tablet, or the web
- Streamlined firestop system submittal package
- Integrate user documents and company logos
- Embed engineering documents from TRAM



The largest resource of firestop experts in the industry under one roof.

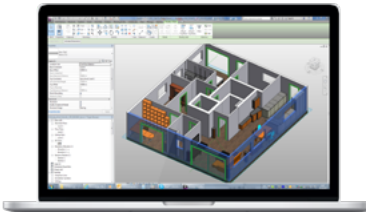
- Engineering judgments
- Custom firestop training
- Project plan review
- Documentation for AHJ's
- Technical inquiries & LEED letters
- Specification review
- Building Information Modeling (BIM)
- Upfront detail sheet generation



A powerful plugin which automatically selects appropriate firestop systems.

The FCM (Firestop Clash Management) plugin uses clash detection to find locations where penetrants meet fire-rated barriers and automatically selects the appropriate firestop systems.

- Removes the complexity of designing firestop systems in Revit®
- Automatically find appropriate firestop systems and products based on Revit® Model Data
- Place corresponding markers and BIM Objects in Model for each firestop system found



Streamline your firestop tracking process.

Construction documentation requirements have exploded. Whether reports are necessary to fulfill contract obligations or data is being used internally for quality control and management purposes, tracking and reporting methods are essential. Firestop Locator provides a method to simplify firestop documentation.

- Interactive floor drawings
- Track penetrations, joints, doors, dampers
- Add team members to any project
- Turn-key solution with pre-printed QR labels
- Generate detailed reports (PDF and Excel®)



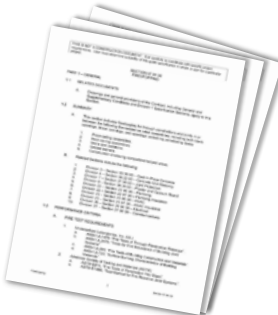
Learn the basics about firestopping.

Login to the Firestop University to access our online learning materials. Access to the University will allow you to receive instant notifications with new course information. Join over 5,000 others and stay up to date with the latest courses offered by STI.



Create your own project specifications.

Guide Specifications are products or solutions for common Firestop issues. Easily editable Word format for use in the creation of project specifications. Each Guide Spec includes only language and firestop products relevant to that division and can be used as is or as additional language to include in an existing specification.



For all of our digital tools, visit stifirestop.com/tools

Find firestop solutions by application

Find the products designed for the work you do.

For your convenience every product in this guide lists its features and benefits, test standards and approvals, and illustrates common applications.

If you have any questions, please call
1 (800) 992-1180 (option 1).

Data Communications

► Overview	7-9
► EZ Path® Series 84+ Fire-Rated Pathway	10
► EZ Path® Series 44+ Fire-Rated Pathway	10
► EZ Path® Series 33 Fire-Rated Pathway	11
► EZ Path® Series 22 Fire-Rated Pathway	11
► EZ Path® Retrofit Devices	12
► EZ-Firestop® Grommets	12
► EZ Path® Smoke & Acoustical Pathway	13
► SpecSeal® Ready® Sleeve	14
► SpecSeal® Ready® Split Sleeve	14
► SpecSeal® SSB Firestop Pillows	14
► SpecSeal® CS Composite Sheet	15
► SpecSeal® FP Intumescent Firestop Plugs	15
► SpecSeal® SSP Putty	15

Mechanical, Electrical, Plumbing

► SpecSeal® SSS Intumescent Firestop Sealant	16
► SpecSeal® LCI Intumescent Firestop Sealant	16
► SpecSeal® LC Endothermic Sealant	16
► SpecSeal® SSM Firestop Mortar	17
► SpecSeal® SIL Silicone Sealant	17
► SpecSeal® WF Firestop Caulk	17
► SpecSeal® SSB Intumescent Firestop Pillows	18
► SpecSeal® SBR Intumescent Firestop Blocks	18
► SpecSeal® Smoke 'N' Sound Spray	18
► SpecSeal® Smoke 'N' Sound Sealant	19
► SpecSeal® LCC Intumescent Firestop Collars	19
► SpecSeal® RTC Intumescent Firestop Collars	19
► SpecSeal® SSC Intumescent Firestop Collars	20
► SpecSeal® SIS Intumescent Sleeve	20
► SpecSeal® CF Closet Flange Firestop Gaskets	20
► SpecSeal® CID Cast-In Firestop Device	21
► SpecSeal® CS Composite Sheet	21
► SpecSeal® SSW Intumescent Wrap Strips	22
► FyreFlange® HVAC Firestop Angle	22
► SpecSeal® FP Intumescent Firestop Plugs	23
► SpecSeal® EP Powershield™ Electrical Box Insert ..	23
► SpecSeal® SSP Putty & Putty Pads	23
► E-Wrap™ Endothermic Wrap	24
► SpecSeal® CS Cable Spray	24

Perimeter Fire Containment

► Quick Clip® Field Installation System	25
► Quick Clip® Factory Installation System	25
► SpecSeal® Window Wall Gasket	26
► SpecSeal® AS200 Elastomeric Spray	26
► FastTack® Firestop Spray	27
► SpecSeal® Mullion Plug	27

Construction Joints

► SpecSeal® ES Elastomeric Firestop Sealant	28
► SpecSeal® AS200 Elastomeric Spray	28
► SpecSeal® LC Endothermic Sealant	28
► SpecSeal® SIL Silicone Sealant	29
► SpeedFlex® Joint Profile	29
► SpeedFlex® TTG Track Top Gasket	29
► SpecSeal® Smoke 'N' Sound Spray	30
► SpecSeal® Smoke 'N' Sound Sealant	30

FBC™ System Compatible indicates that this product has been tested, and is monitored on an ongoing basis, to assure its chemical compatibility with FlowGuard Gold® BlazeMaster® and Corzan® piping systems and products made with TempRite® Technology. The FBC System Compatible Logo, FBC™, FlowGuard Gold®, BlazeMaster®, Corzan®, and TempRite® are trademarks of Lubrizol Advanced Materials, Inc. or its affiliates.

IMPORTANT NOTICE: ALL STATEMENTS, TECHNICAL INFORMATION, AND RECOMMENDATIONS CONTAINED HEREIN ARE BASED UPON TESTING BELIEVED TO BE RELIABLE, BUT THE ACCURACY AND COMPLETENESS THEREOF IS NOT GUARANTEED.

STI TYPICALLY WARRANTIES ITS PRODUCTS FOR ONE FULL YEAR. FOR COMPLETE DETAILS OF OUR STANDARD WARRANTY, PLEASE VISIT WWW.STIFIRESTOP.COM/LEGAL/WARRANTY
MADE IN THE USA - © 2025 SPECIFIED TECHNOLOGIES INC.



The Smart Choice.

EZ Path® saves time, money, and resources by removing ongoing downstream costs.

Only EZ Path® helps you avoid citations and costs associated with non-compliance. Other sleeves require constant upkeep, ongoing maintenance, and inspection to ensure compliance.

You can never be certain that other sleeves have been activated, plugs and putty have been replaced, or that they have been properly sealed to meet codes. And now that The Joint Commission **mandates 60 DAY RFIs** (Requirements for Improvement) for survey deficiencies—**ongoing code compliance is more important than ever.**

The Only Maintenance-Free Pathway.

Annual inspection and maintenance of firestop systems is required by code.

An Evaluation Service Report (ESR)* was issued on May 20, 2016 and revised on November 7, 2024 by UL® for EZ Path® Fire-Rated Pathways. The report confirms code compliance with the International Building Code® (IBC), International Fire Code® (IFC), and NFPA 101, "Life Safety Code®" (LSC). The report goes on to confirm that, when properly installed, **EZ Path® Pathways are exempt from ongoing maintenance.**

Unlike other sleeves, **EZ Path®** has no moving parts and requires no action to activate the internal sealing mechanism—making it **the only rated firestop device that is compliant right out of the box.**

The Only Pathway that Pays for Itself.

Other sleeves incur enormous ongoing costs over the lifecycle of the building.

EZ Path® offers the ultimate in flexibility and can virtually eliminate fines due to non-compliance, increasing your savings over and over again. **EZ Path®** is a fully sustainable cable pathway solution for the lifetime of your building.

- Ends downstream maintenance & inspection costs
- Eliminates ongoing fire & smoke sealing costs
- Allows remote cable pulls through multiple barriers
- Reduces unnecessary trips above the ceiling
- Limits liability & decreases exposure to pathogens

*stifirestop.com/ez-path/the-facts



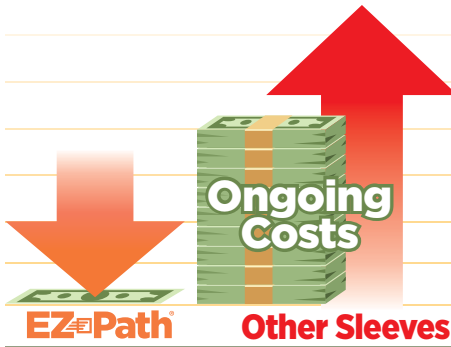
“Most cable penetrations were found to be out of compliance except for EZ Path®.”

Global Fire Protection
Inspections Department



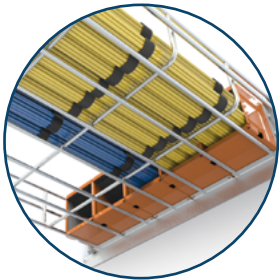
EZ Path® Fire-Rated Pathways do not require regular maintenance...

Evaluation Service Report
Underwriters Laboratory

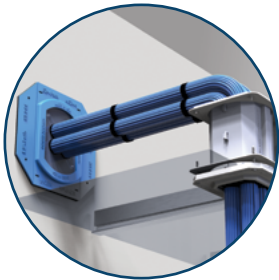


“Over its lifecycle, EZ Path® pays for itself many times over.”

Jeff Combs
Fire Marshal, Major U.S. Medical System



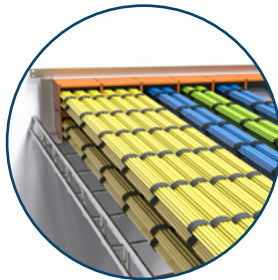
0-100% cable fill
Self sealing & always compliant



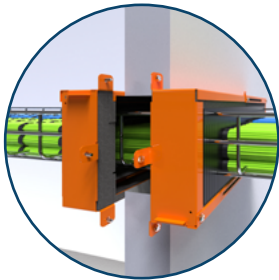
Smoke & acoustical devices
for non-fire-rated walls



Grommets
for single-cable applications



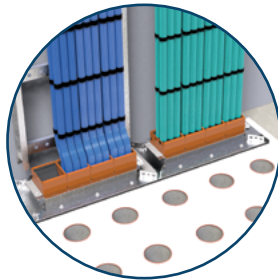
High-density solutions
for space-saving horizontal applications



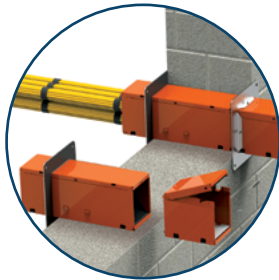
Retrofit devices
for non-compliant sleeves & cable trays



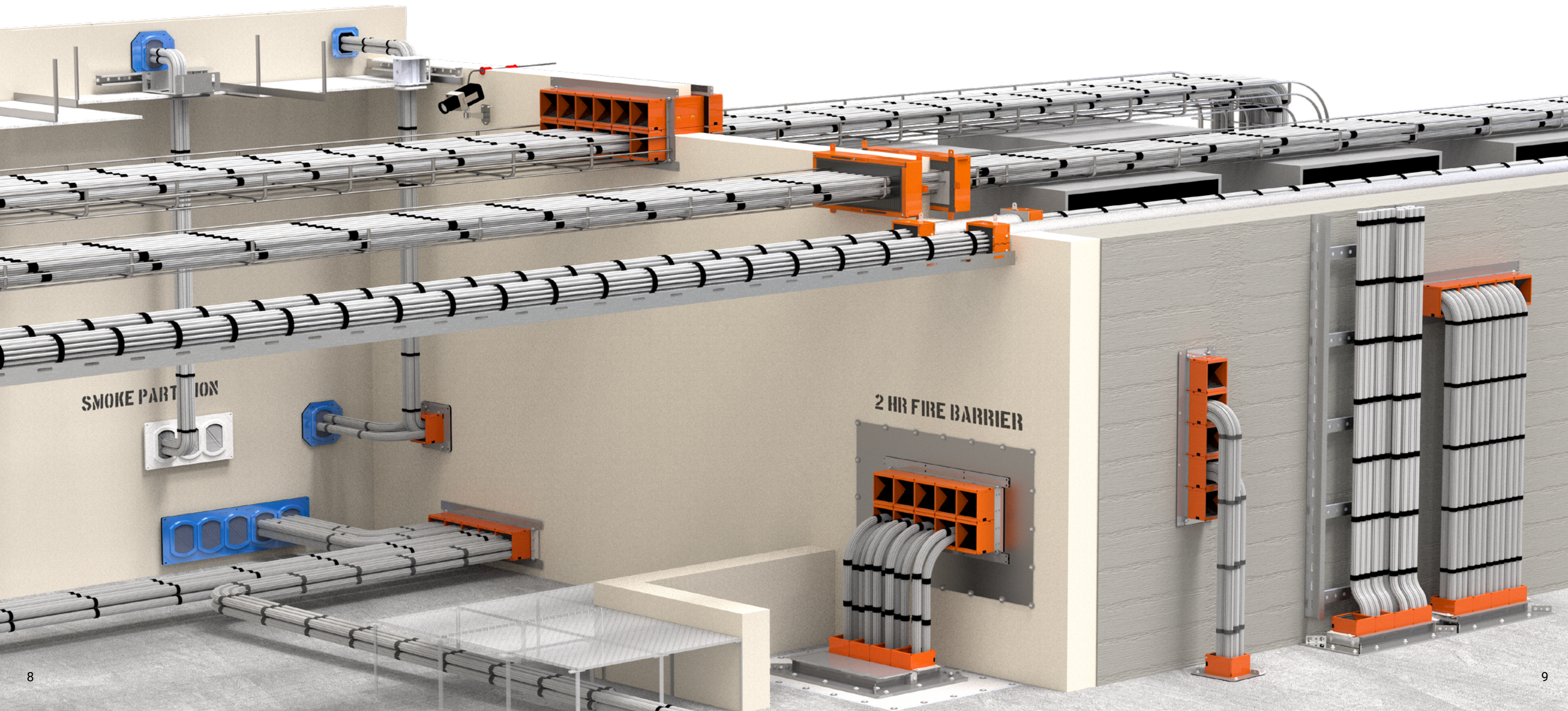
High-density solutions
for space-saving vertical applications



Smaller footprint
with greater cable capacity than traditional methods



Extensions
for use with thicker walls

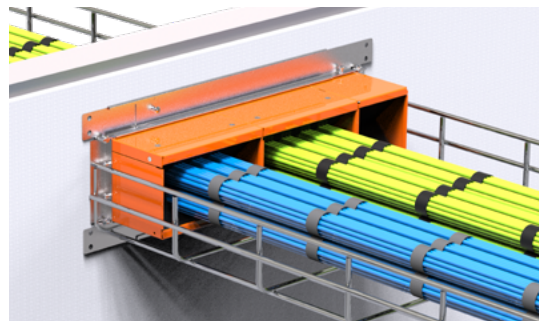


Series 84+ Fire-Rated Pathway

The **EZ Path® Series 84+ Fire-Rated Pathway** is a maintenance-free pathway solution designed to handle high cable volume conditions through fire-rated walls. Its compatibility with the EZ Path® Series 44+ allows for ganged configurations that align with standard cable trays. The Series 84+ incorporates self-sealing intumescent pads that automatically adjust to the installed cable fill. Under fire exposure, the intumescent pads expand and swell, resisting the passage of smoke and flame.

Features & Benefits

- Self-sealing design provides exceptional fire and smoke leakage ratings
- Allows for easy moves, adds, and changes
- Modular attributes promote alignment with standard cable trays
- Compatible with EZ Path® Series 44+ Fire-Rated Pathway Device
- Greatest achievable cable density of any solution on the market



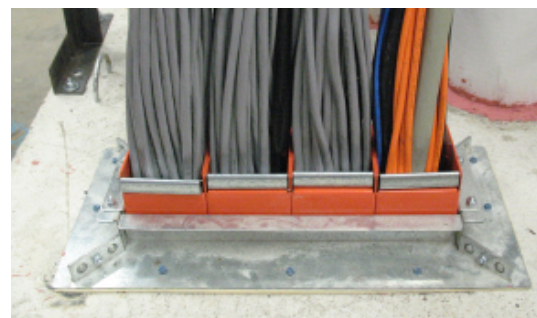
Scan or click for more information

Series 44+ Fire-Rated Pathway

The **EZ Path® Series 44+ Fire-Rated Pathway** is a maintenance-free pathway solution designed for high cable volume conditions through fire-rated walls and floors. The Series 44+ incorporates self-sealing intumescent pads that automatically adjust to the installed cable fill without the need for user manipulation. Under fire exposure, the intumescent pads expand and swell, resisting the passage of smoke and flame.

Features & Benefits

- Self Sealing design provides exceptional fire and smoke leakage ratings
- Allows for easy moves, adds, and changes
- Designed for new and existing conditions
- Variety of accessories available for any field condition
- Modular grid system for riser applications



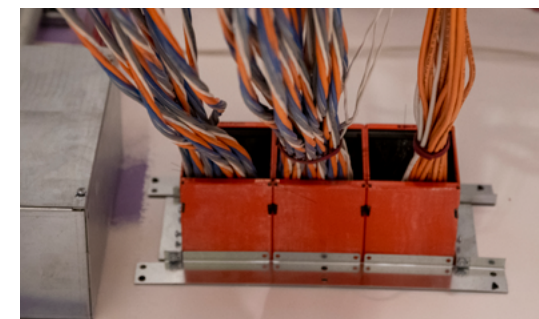
Scan or click for more information

Series 33 Fire-Rated Pathway

The **EZ Path® Series 33 Fire-Rated Pathway** is a maintenance-free pathway solution for moderate cable volumes through fire-rated walls and floors. The Series 33 incorporates built-in intumescent pads that automatically adjust to cable fills. When exposed to flame and high temperatures, the intumescent pads expand to form a dense insulative char that prevents the passage of smoke and flame.

Features & Benefits

- Self Sealing design provides exceptional fire and smoke leakage ratings
- Allows for easy moves, adds, and changes
- Designed for new and existing conditions
- Variety of accessories available for any field condition



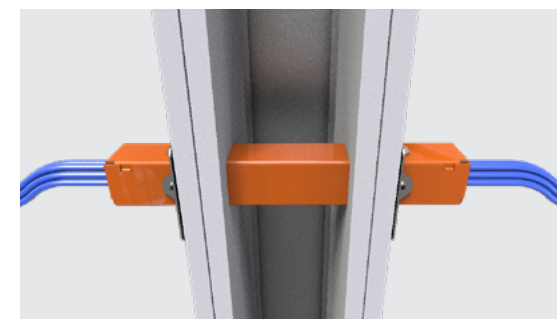
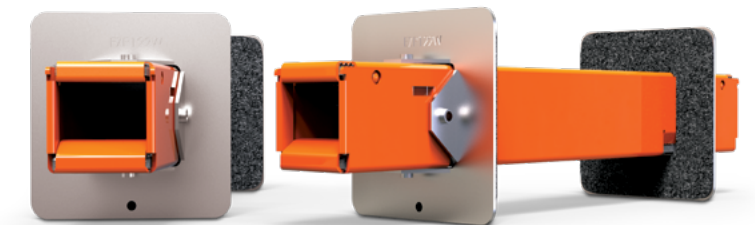
Scan or click for more information

Series 22 Fire-Rated Pathway

The **EZ Path® Series 22 Fire-Rated Pathway** is a maintenance-free pathway solution for smaller cable bundles through fire-rated wall assemblies. The device is offered as a complete kit without the need for additional accessory products for installation.

Features & Benefits

- Self Sealing design provides exceptional fire and smoke leakage ratings
- Allows for easy moves, adds, and changes
- Designed for new and existing conditions
- Suited for round and rectangular openings



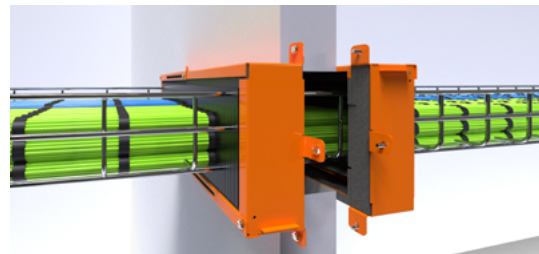
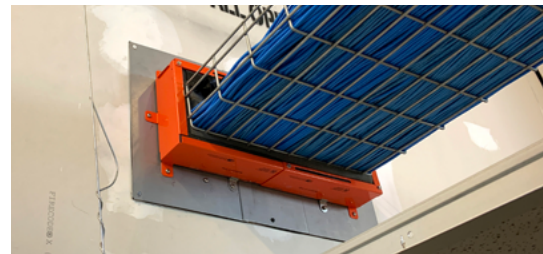
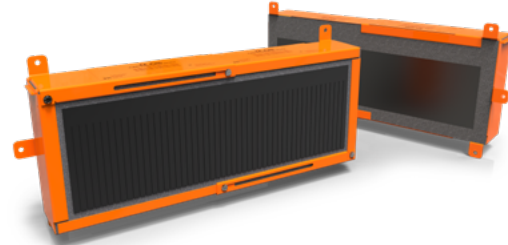
Scan or click for more information

Cable Tray Retrofit Device

The **EZ Path® Cable Tray Retrofit Device** is designed for addressing non-compliant tray penetrations in fire-rated wall assemblies. It's split housing design installs around existing cable tray penetrations restoring fire-resistance ratings. The EZ Path® Cable Tray Retrofit Device quickly restores compliance to cable tray penetrations loaded with up to 100% visual fill of cables.

Features & Benefits

- Tested in Concrete and Gypsum Board Walls
- Sizes available for 12 in. (304.8 mm) to 24 in. (609.6 mm) wide cable trays
- Tested cable fills from 25 up to 100%
- Suitable for ladder and wire basket style cable trays
- Safety Orange for easy identification



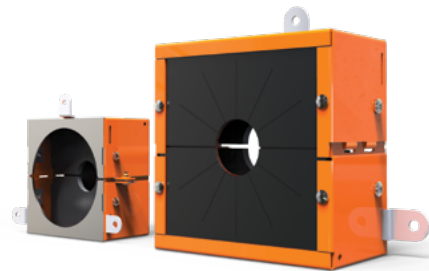
Scan or click for more information

Retrofit Device

Non-compliant cable sleeves are the bane of every facilities team. Bring these deficient openings back into code compliance with the **EZ Path® Retrofit Device**. Its two-part clam shell design installs around projecting sleeves and cable bundles, restoring fire and smoke leakage performance. The EZ Path® Retrofit Device quickly and easily retrofits sleeves of up to 100% visual fill, restoring fire performance without the need for additional firestop products.

Features & Benefits

- Sized for 2 in. and 4 in. metallic sleeves
- Designed for cable sleeves and stubs
- Professional fit and finish
- Safety Orange for easy identification
- Suited for round and rectangular openings



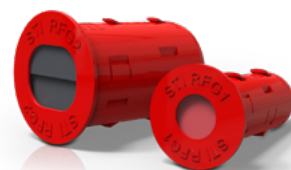
Scan or click for more information

EZ-Firestop® Grommet

EZ-Firestop® Grommets make sealing penetrations of individual and small bundles of cables through gypsum board walls a snap. Molded from premium plenum-plastics and incorporating a soft foam inner core, EZ-Firestop® Grommets eliminate the need for sleeves, firestop putties, and sealants.

Features & Benefits

- Suited for addressing single membrane or complete through-penetrations
- Available as a single cable or multiple cable solution
- Ideal for alarm, security, or wireless access point installations
- Designed for 1 & 2 hr fire-rated gypsum board wall assemblies



Scan or click for more information

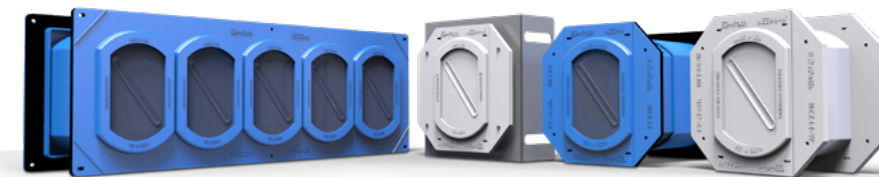
EZ Path® Smoke & Acoustical Pathways

Designed for easy installation in non-fire-rated floor, ceilings, and walls, **EZ Path® Series 33NEZ & 44NEZ Smoke & Acoustical Pathways** provide exceptional smoke sealing and acoustical performance with tested and approved cable capacities ranging from 0 up to 100% visual fill.

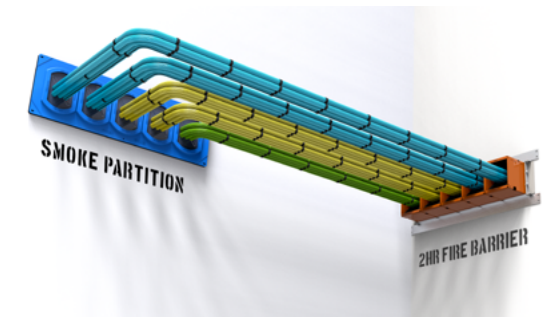
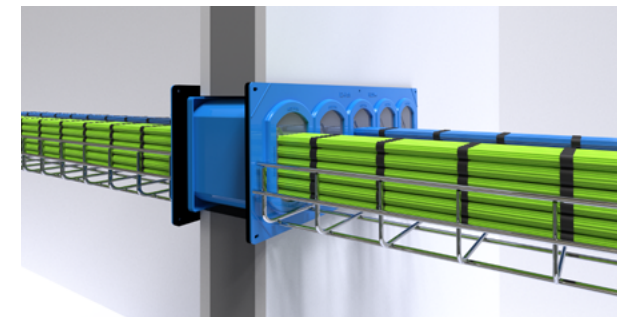
Features & Benefits

- Self Sealing design providing exceptional STC and L Ratings
- Gang Plate and Ceiling Mounted Options
- Allows for easy Moves, Adds, and Changes
- Professional Fit & Finish
- Devices available in Blue and White

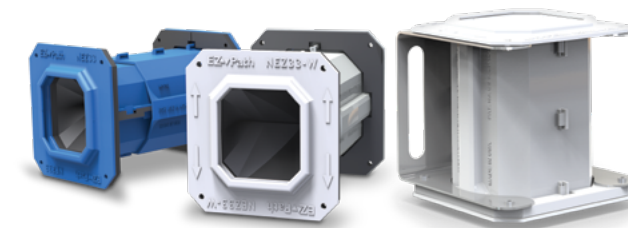
Series 44NEZ



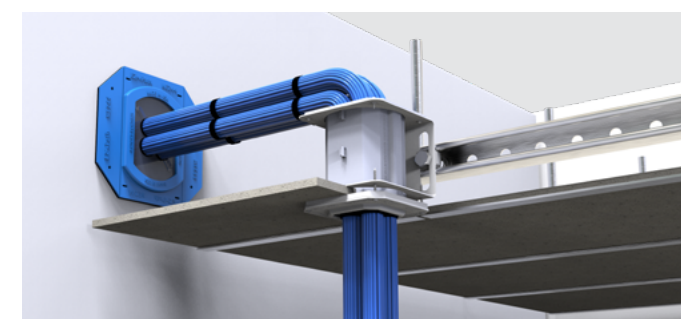
Scan or click for more information



Series 33NEZ



Scan or click for more information





Ready® Sleeve

SpecSeal® Ready® Sleeves are designed for new cabling penetrations where sleeves are required. Each Ready® Sleeve kit includes a preformed steel sleeve with rolled edges, steel escutcheon plates with intumescent gaskets, and a dose of our SpecSeal® SSP Firestop Putty. The rolled edges of each Ready® Sleeve eliminate the need for bushings while the included escutcheon plates and gaskets take the place of steel strut and strap supports.

- Offered in three sizes: 1 in., 2 in., & 4 in. diam.
- Complete kit including wall labels
- Sized for assemblies up to 10 in. thick
- Oversized escutcheon plates and gaskets available for larger openings



Scan or click for more information



Ready® Sleeve Split Sleeve

SpecSeal® Ready® Split Sleeve kits easily install around existing cables. Each Ready® Split Sleeve kit includes two preformed steel sleeve halves with rolled edges, steel escutcheon plates with intumescent gaskets, and a dosage of our SpecSeal® SSP Firestop Putty. Ready® Split Sleeve's two-piece body and plates easily capture previously installed cables while tightly fastening to the penetrated barrier.

- Offered in three sizes: 1 in., 2 in., & 4 in. diam.
- Complete kit including wall labels
- Sized for assemblies up to 10 in. thick
- Oversized escutcheon plates and gaskets available for larger openings



Scan or click for more information



Intumescent Firestop Pillows

SpecSeal® SSB Firestop Pillows easily compress and conform around any penetrant. Equally suited for new or existing conditions, SpecSeal® Pillows make short work of even the most complex through-penetration firestop conditions.

- Available in four different sizes
- Tested in a wide range of construction types and configurations
- Easily installs from a single side
- Re-enterable allowing for future work in previously sealed openings



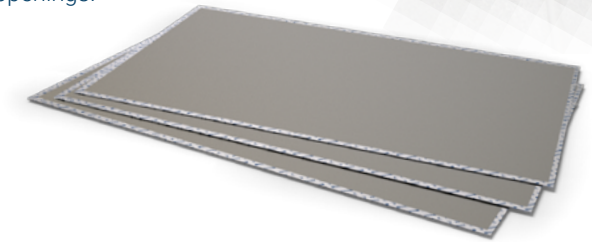
Scan or click for more information



Composite Sheet

SpecSeal® Composite Sheet is the ideal solution for large openings where a permanent seal is required. Composite sheets consist of thin sheet steel, intumescent material, wire mesh, and aluminum foil. Used in conjunction with other SpecSeal® Firestop Products to seal large openings.

- Professional Fit and Finish
- Used with other SpecSeal® Firestop Products
- Easily cut with common sheet metal tools
- Tested for up to 4 Hours of fire resistance when tested to ASTM E814 (UL1479) or CAN/ULC-S115



Scan or click for more information



Intumescent Firestop Plug

SpecSeal® FP Intumescent Firestop Plugs are easy to install, creating a robust seal against fire and smoke. Firestop plugs make an excellent solution for temporary installation overnight, as well as permanent long-term seals for blank openings, and cable penetrations through common construction such as concrete or gypsum board. Sized to fit 2 in. and 4 in. diameter openings, firestop plugs make sealing conduit stubs and sleeves a breeze.

- Testing in Gypsum walls and concrete walls and floors
- Soft and easily compressed into conduit stubs and sleeves
- No expiration date
- Partners with other SpecSeal® Firestop Products



Scan or click for more information



Firestop Putty

SpecSeal® SSP Firestop Putty excels at sealing cabling penetrations and outlet boxes. SSP Putty is non-hardening and easily hand works around grouped cabling penetrations forming a re-enterable seal allowing for future work.

- Available in tubes or preformed pads
- Remains pliable and workable for the lifetime of the installation
- Acoustically tested
- Will not harden overtime



Scan or click for more information

SpecSeal® SSS Intumescent Sealant

SpecSeal® SSS Firestop Sealant is a premium grade water-based Intumescent firestop sealant, that incorporates our proprietary two-stage intumescent technology making it the go to choice for any combustible or non-combustible penetrants. Only 1/2" applied depth will provide up to a 4 hr fire resistance rating when tested to ASTM E814/UL 1479.

- Patented Two-Stage Intumescent Technology
- Easily works into tight spaces between penetrants
- Compatible with CPVC Piping
- Can be sanded and painted to match its surroundings



SpecSeal® LCI Intumescent Sealant

SpecSeal® LCI Firestop Sealant is a water-based intumescent sealant intended for a wide range of through-penetration and construction joint applications. SpecSeal® LCI Sealant has excellent caulking properties making it easy to apply in vertical applications as well as overhead.

- Gun Grade material available in caulk tubes, sausages and pails
- Tested for through-penetration & construction joint configurations
- Compatible with CPVC Piping
- Can be sanded & painted to match its surroundings



SpecSeal® LC Endothermic Sealant

SpecSeal® LC Endothermic Sealant is a latex-based gun grade firestop sealant for construction joints and non-combustible penetrations. After application, LC Sealant cures to form a flexible seal against the propagation of fire. Under fire exposure, LC absorbs heat and release water vapor resisting the progress of smoke and flame.

- Installer Friendly, easily applied with standard caulking gun
- Can be troweled on for larger applications
- Tested for up to 4 Hours of fire resistance when tested to ASTM E1966/UL2079, ASTM E814/UL1479, and CAN/ULC-S115
- Listed in over 80 UL® Tested Firestop Systems



SpecSeal® SSM Firestop Mortar

SpecSeal® SSM Firestop Mortar is a lightweight, cost-effective solution for oversized openings in concrete walls and floors. Once mixed with water, SpecSeal® Mortar forms a lightweight, low density slurry that easily applies into concrete walls and floors. SpecSeal® Mortar cures quickly and will not split or crack due to freezing or changes in temperature.

- Can be poured, pumped, or troweled in place
- Partners with other SpecSeal® Firestop Products
- Durable permanent seal
- Re-penetrable allowing for future penetrants



SpecSeal® SIL Silicone Sealant

SpecSeal® SIL300 Silicone Sealant is a high performance silicone firestop sealant tested to resist the passage of smoke, flame and water through construction joints and through-penetrations. SIL300 Sealant cures to form a flexible seal and carries a Class 1 W Rating for water resistance (Per ANSI/UL1479).

- Available in a Gun Grade or Self Leveling
- Ozone and UV Resistant
- Excellent recovery from joint extension and compression
- Listed in over 175 UL® Tested Systems



SpecSeal® WF Intumescent Firestop Caulk

WF300 Intumescent Firestop Caulk is a latex-based firestop caulk designed for residential wood frame construction. WF300 Caulk is tested for addressing penetrations through wood/frame construction such as wood stud walls and floor/ceiling assemblies. Under fire exposure, WF300 expands to up to four times its original volume.

- Installer friendly, easily applies with standard caulking gun
- Suitable for combustible and non-combustible penetrants
- Tested for up to 3 Hours of fire exposure when tested to ASTM E814/UL1479

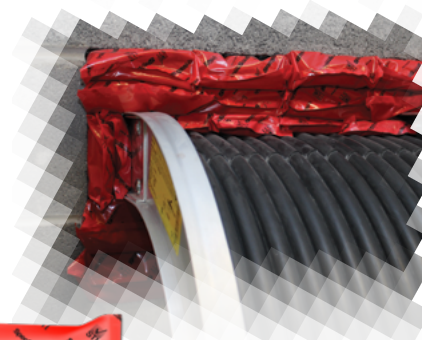




Intumescent Firestop Pillows

SpecSeal® SSB Firestop Pillows easily compress and conform around any penetrant. Equally suited for new or existing conditions, SpecSeal® Pillows make short work of even the most complex through-penetration firestop conditions.

- Available in four different sizes
- Tested in a wide range of construction types and configurations
- Easily installs from a single side
- Re-enterable allowing for future work in previously sealed openings



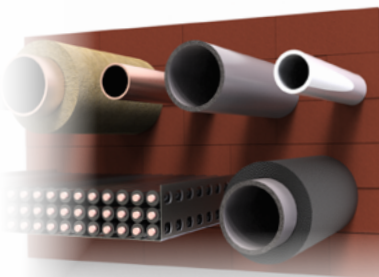
Scan or click for more information



Intumescent Firestop Blocks

SpecSeal® SBR Firestop Blocks are penetration firestop products resembling foam bricks. These intumescent urethane foam blocks are installed in openings by compressing and stacking into the opening in a brick-like fashion. The intumescent block expands in high temperatures to impede fire, smoke, and gas passage.

- Intumescent – expands in all directions for a tough, tight seal
- Reinstallable for easy retrofitting of various pipes, cables, and innerducts
- Lightweight for ease of installation
- Easier wire screen requirements for large openings and 2 hour ratings



Scan or click for more information



Smoke'N'Sound Acoustical Spray

SpecSeal® Smoke 'N' Sound Spray is a high quality acrylic latex spray designed for static or minimally dynamic linear joints or gaps. SpecSeal® Smoke 'N' Sound spray is formulated to adhere to all common construction surfaces and may be applied using airless spray equipment or with a brush (for small applications and touch ups).

- Water-based—for easy installation and cleanup
- Excellent smoke seal
- Acoustically tested—reduces noise transmission
- Safe—low VOCs—no solvents, and non-halogenated
- Auto-bonding—allows spray to adhere to cured spray
- Paintable (when dry)



Scan or click for more information



Smoke'N'Sound Acoustical Sealant

SpecSeal® Smoke 'N' Sound Sealant is a high quality acrylic latex sealant designed for sealing through-penetrations (such as pipes, conduits, cabling, busways, openings), membrane penetrations (such as p-traps and outlet boxes) in smoke rated walls.

- Economical - high performance without the high price
- Water resistant - will not re-emulsify when dry
- Remains flexible - allows movement
- Acoustically tested, reduces noise transmission
- Paintable when dry



Scan or click for more information



Intumescent Firestop Collars

SpecSeal® LCC Firestop Collars are factory-manufactured firestop devices sized to plastic pipes of up to 4 in. Trade Size. LCC Collars consist of a restraining collar with a factory applied intumescent ensuring the correct amount of material is applied every time.

- Sized for 1-1/2 in., 2 in., 3 in., & 4 in. Trade Size Combustible Pipes
- Installs quickly and eliminates waste
- Tested in a variety of construction types



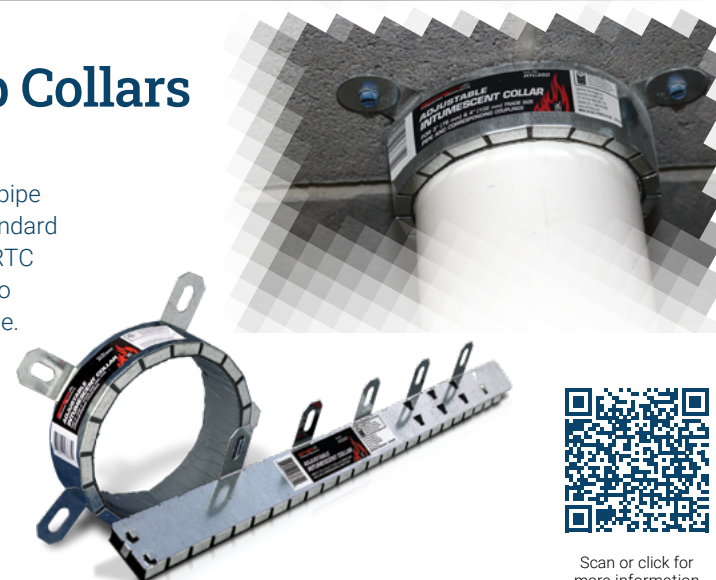
Scan or click for more information



Intumescent Firestop Collars

SpecSeal® RTC Firestop Collars adapt to the size combustible pipe that you are working with. One collar is designed to address standard 3 in. & 4 in. plastic pipes as well as their associated couplings. RTC Firestop Collars adaptable nature make them an excellent tool to have at hand when bringing combustible penetrations up to code.

- One Collar fits 3 in. pipe, 3 in. pipe coupling, 4 in. pipe, & 4 in. pipe coupling
- Fits into tight spaces
- Low installed cost
- Tested in a variety of construction types



Scan or click for more information



Intumescent Firestop Collars

SpecSeal® SSC Firestop Collars are factory-manufactured firestop devices sized to plastic pipes of up to 6 in. Under fire exposure, they quickly expand and collapse combustible piping to resisting the passage of smoke and flame.

- For 1-1/2 in., 2 in., 3 in., 4 in., 6 in. Trade Size Combustible Pipes
- Installs quickly and eliminates waste
- Tested to CAN/ULC-S115 at 50 PA (0.20 in. water)



Scan or click for more information



Intumescent Sleeve

SpecSeal® Intumescent Sleeves protect metallic and plastic pipes penetrating through fire rated floors. Utilizing a flexible steel sleeve body and molded intumescent lining, it wraps around pipes ranging from 2 in. to 4 in. Trade size.

- Rapid expansion - closes off burning pipes quickly
- Thin profile - use it in all the tight spots
- Flexible & durable - no loose flakes (eye hazards)
- Lower installation cost



Scan or click for more information



Closet Flange Firestop Gasket

SpecSeal® Closet Flange Firestop Gaskets are one-piece, molded rubber, intumescent pads that install beneath a closet flange to effectively firestop the opening.

- Seamless fit for fast, easy installation with no tools required
- Lower installation cost
- Installs from the top, saving labor



Scan or click for more information



Cast-In Devices

SpecSeal® Cast-In Devices are a sleeve, concrete core, firestop, and watertight seal rolled into a single device. Constructed with ABS Plastic and Polypropylene, this CID has excellent durability and rigidity. The device is bi-directional allowing for both floor and ceiling penetration. A single device is used for both metal and plastic piping accommodating heights up to 8" via cutting or for heights over 8" with extensions utilizing an adjustable pin. The CID includes a W-rating providing end-users maximum protection against water damage.

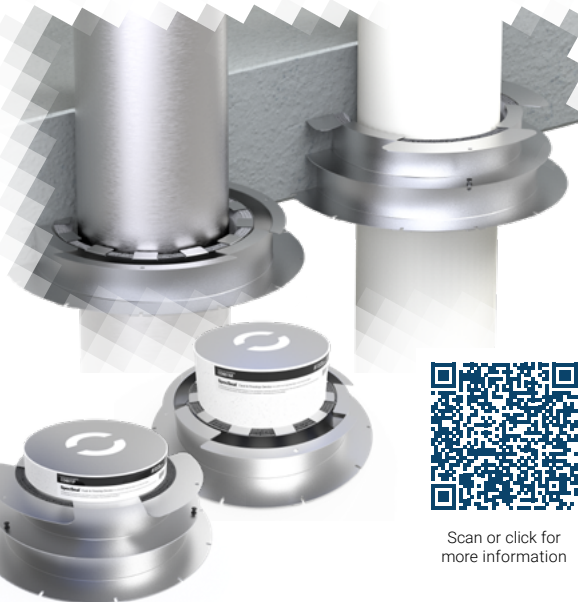
- Saves money by eliminating core drilling.
- Single device for metal and plastic piping.
- Sleeve is bidirectional allowing for both floor and ceiling penetration.
- Saves time - no firestopping step required.
- Visible yellow tube for added job site safety.
- Provides pre-installed fire and smoke seal.
- Provides protection against water damage (W-Rating).

SpecSeal® 8 Inch Cast-In Devices provide a robust yet simple integrated firestop system. With fewer components and welded construction, the 8" CID is designed to ease casting with its flat, simple shape that reduces defects and stress points.

- Smooth surface design allows concrete to flow around the device, properly filling in corners and gaps
- Works with metallic and non-metallic penetrants
- Includes a removable form for a clean, ready-to-use opening
- Robust construction for long-term durability
- Bi-directional, allowing for use in both floor and ceiling assemblies
- Eliminates the need to core drill and firestop
- Manufactured in the USA in an ISO-certified facility



Scan or click for more information



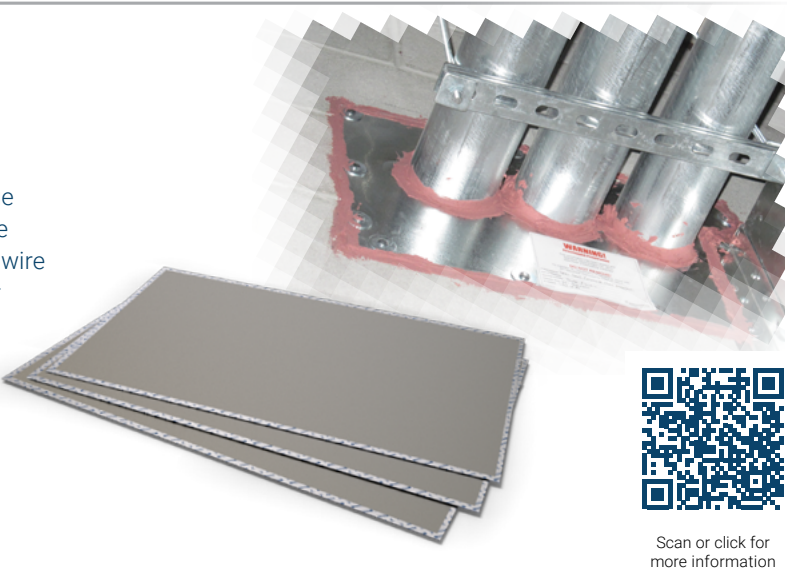
Scan or click for more information



Composite Sheet

SpecSeal® Composite Sheet is the ideal solution for large openings where a permanent seal is required. Composite sheets consist of thin sheet steel, intumescent material, wire mesh, and aluminum foil. Used in conjunction with other SpecSeal® Firestop Products to seal large openings.

- Professional Fit and Finish
- Used with other SpecSeal® Firestop Products
- Easily cut with common sheet metal tools
- Tested for up to 4 Hours of fire resistance when tested to ASTM E814 UL1479 and CAN/ULC-S115



Scan or click for more information



Intumescent Wrap Strips

SpecSeal® SSW Wrap Strips are available in 12 ft. rolls as well as individually pre-sized strips to minimize waste and speed up installation. When installed in conjunction with restraining steel, SSW Wrap Strips are able to collapse non-metallic piping of up to 12 in. diam.

- RED/RED2 for Plastic piping up to 6 in. Trade Size
- BLU/BLU2 for Plastic piping up to 12 in. Trade Size
- SSW comes in a variety of thicknesses and widths for demanding applications.
- Tested in a variety of construction types



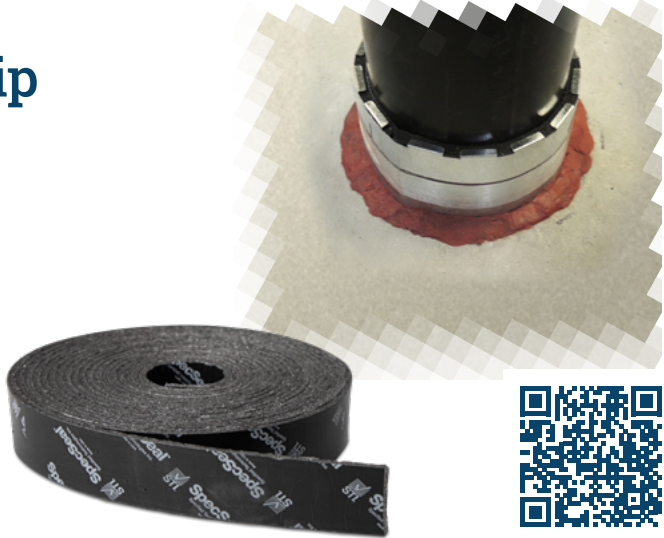
Scan or click for more information



SSW1000EX Wrap Strip

SpecSeal 1000EX Wrap Strips are highly flexible, elastomeric strips designed to firestop combustible penetrations in fire-rated floors, floor/ceilings, and walls..

- Rapid expansion - closes off burning penetrants faster
- High volume char - significant expansion seals off opening
- Water-resistant - no soluble or hygroscopic ingredients
- Highly flexible - no foil, easier to install
- Versatile - performer for a wide range of complex applications



Scan or click for more information

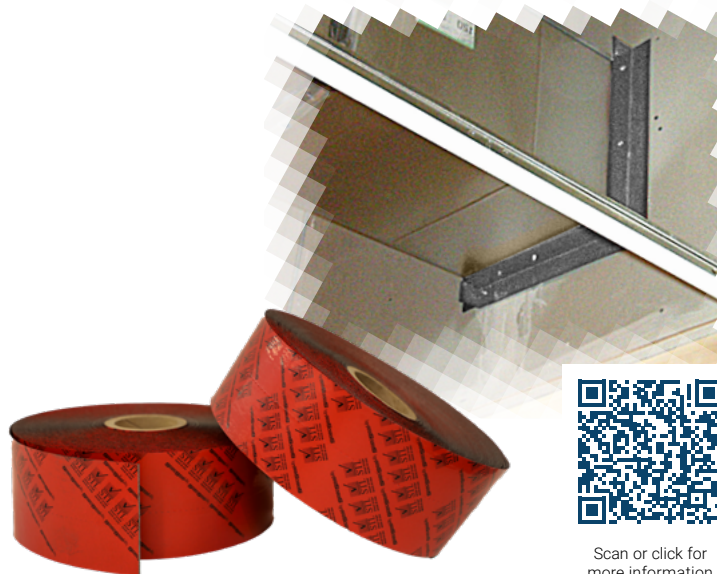


FyreFlange® HVAC Firestop Gasket

FyreFlange® Firestop Gasket offers a simple, code-compliant solution for sealing HVAC ductwork penetrations. This intumescent gasket is designed to be paired with standard 2" x 2" steel angle, expanding under fire exposure to block smoke and flame while helping reinforce duct integrity.

Eliminate the headaches of staging and multiple inspections with traditional HVAC firestopping — simplify your installs with FyreFlange®.

- Eliminates the need for sealants and forming materials
- Easily installs around bare and insulated rectangular ductwork in previously sealed openings



Scan or click for more information



Intumescent Firestop Plug

SpecSeal® FP Intumescent Firestop Plugs are easy to install, creating a robust seal against fire and smoke. Firestop plugs make an excellent solution for temporary installation overnight, as well as permanent long-term seals for blank openings, and cable penetrations through common construction such as concrete or gypsum board. Sized to fit 2 in. and 4 in. diameter openings, firestop plugs make sealing conduit stubs and sleeves a breeze.

- Testing in Gypsum walls and concrete walls and floors
- Soft and easily compressed into conduit stubs and sleeves
- No expiration date



Scan or click for more information



PowerShield® Electrical Box Insert

SpecSeal® EP Powershield® Electrical Box Inserts install within steel electrical boxes directly against the back of the box. Powershield® Box inserts are equally suited for remediation as well as preinstallation before the boxes have made it to the job site. Powershield® Box inserts incorporate pre-scored openings allowing for easy installation around ground lugs.

- Tested in boxes up to 4-1/2 in. x 14 in. x 2-1/2 in.
- Suitable for Steel and Plastic Face Plates
- Easily preinstalls before shipping to the jobsite
- Eliminates the need for putty in previously sealed openings



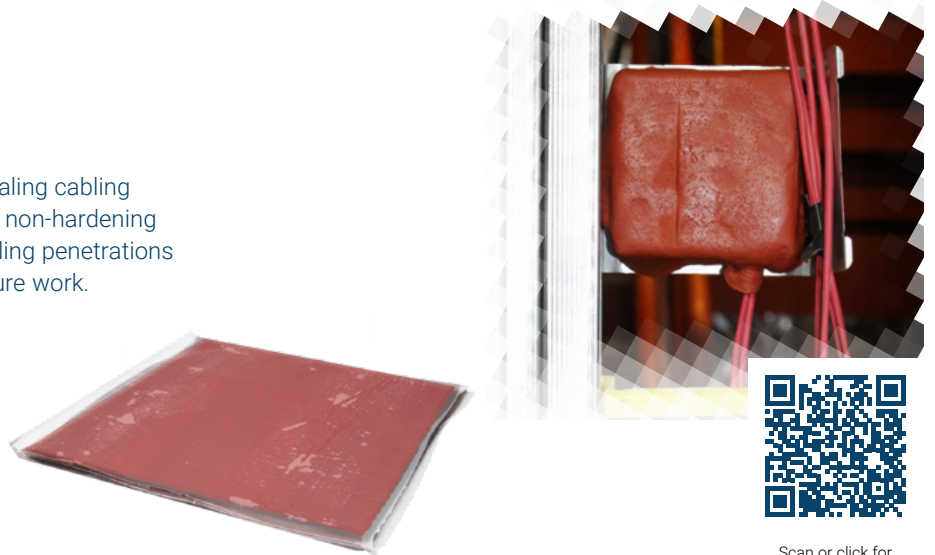
Scan or click for more information



Putty Pads

SpecSeal® SSP Firestop Putty excels at sealing cabling penetrations and outlet boxes. SSP Putty is non-hardening and easily hand works around grouped cabling penetrations forming a re-enterable seal allowing for future work.

- Available in tubes or preformed pads
- Remains pliable and workable for the lifetime of the installation
- Acoustically tested
- Will not harden overtime



Scan or click for more information



E-Wrap® Endothermic Wrap

E-Wrap® Endothermic Wrap is a protective wrap designed for fire protection of critical circuits and infrastructure such as fire pumps, signaling equipment, elevators, alarms, process control equipment, or emergency responder communications enhancement systems (ERCES). E-Wrap® is also used for fuel oil pipe protection. When installed around Electrical Metallic Tubing (EMT), conduits, cable trays, or pipes, E-Wrap® releases chemically bound water to have a cooling effect providing up to 2 hours of circuit integrity ensuring continued operation under fire conditions.

- Flexible material – easy to install, even on small diameter conduits
- Tested with Electrical Metallic Tubing (EMT) and heavier conduits
- Fewer layers required for protection – better coverage per roll
- Endothermic – releases chemically bound water to have a cooling effect
- Weighs less than competing wraps
- May be used to achieve equal F&T Ratings on penetration firestop systems.
- Tested to ASTM E1725 for circuit integrity



Scan or click for more information



Cable Spray

SpecSeal® Cable Spray applies quickly to grouped cables within cable trays, providing protection against cable jacketing ignition from direct fire exposure and slowing flame propagation. Cable Spray applies quickly with an airless spray rig, only requiring a minimum 1/8" wet applied thickness. Once cured, Cable Spray forms a flexible, water and weather resistance seal adhering to virtually all cable jacketing materials.

- Contains no inorganic fibers, asbestos, or solvents
- FM Approved to FM Approval Class: 3971
- Meets IEC 60331-21 & IEC 60332-3
- Passes IEEE 383/1202

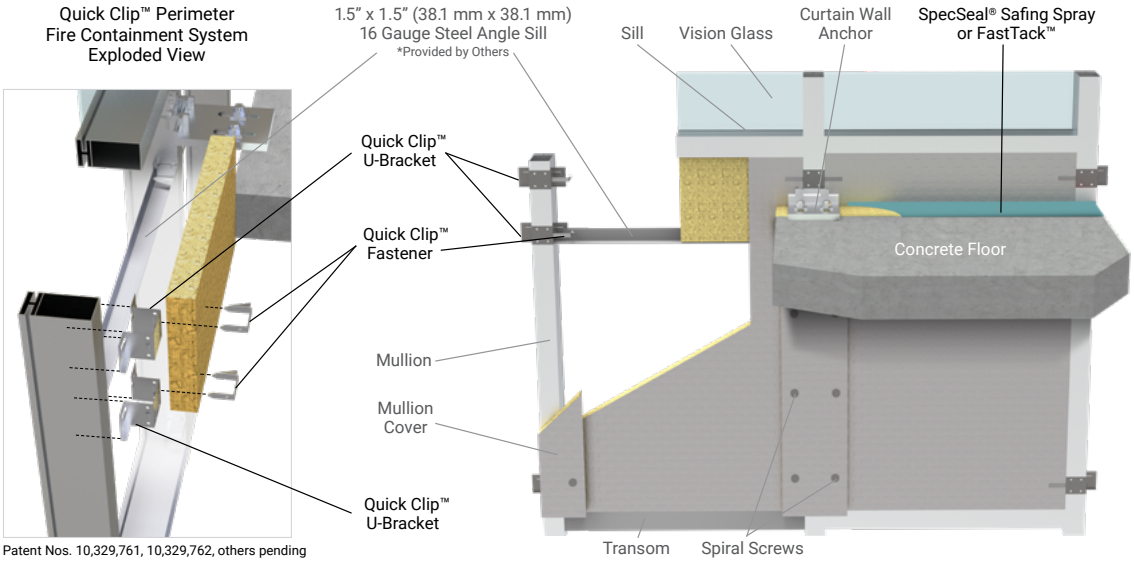
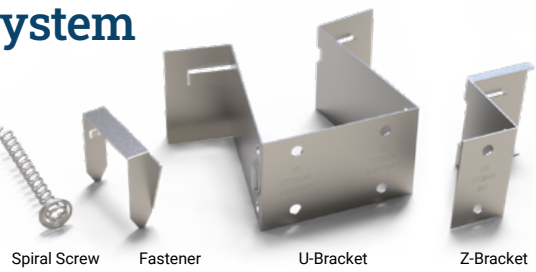


Scan or click for more information



Quick Clip™ Field Installation System

SpecSeal® Quick Clip™ Perimeter Fire Containment System is designed to accelerate the installation of curtain wall insulation for perimeter fire containment systems. The system's unique U-brackets clip onto the mullions without direct attachment by screws to support the curtain wall insulation. Self-locking fasteners secure the insulation panels in place.



Patent Nos. 10,329,761, 10,329,762, others pending

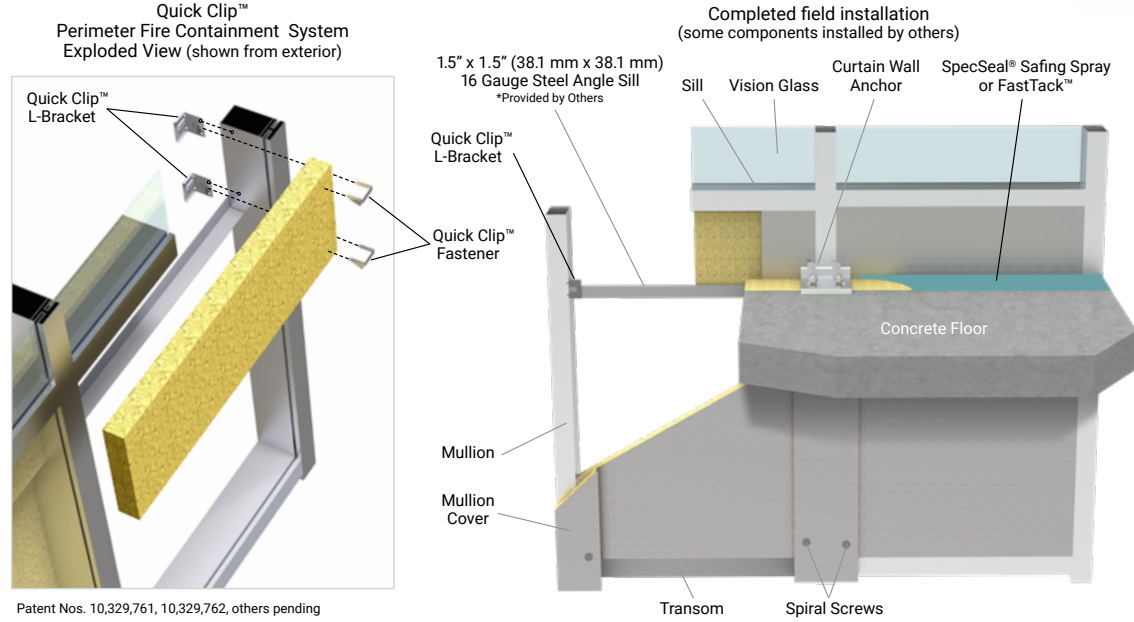
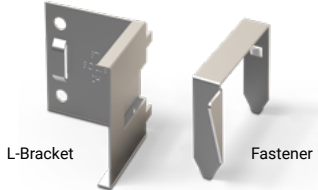


Scan or click for more information



Quick Clip™ Factory Installation System

SpecSeal® Quick Clip™ L-Bracket Perimeter Fire Containment System is the fastest way to install curtain wall insulation for perimeter fire containment systems. Simply fasten the L-shaped brackets to the mullion, cut and fit the curtain wall insulation, and then secure the insulation in place with self-locking fasteners.



Patent Nos. 10,329,761, 10,329,762, others pending



Scan or click for more information

SpecSeal® WWG Window Wall Gasket

SpecSeal® Window Wall Gasket is an intumescent gasketing system incorporating a fiberglass inner webbing that is designed for edge of slab firestopping in Window Wall Construction. Window Wall Gasket's thin profile sits between your floor and aluminum framing; nesting behind your decorative panel exterior. Under fire exposure, the Window Wall Gasket rapidly expands to form a dense, highly insulative char.

- Designed for Window Wall and Hybrid Window Wall Construction
- Compatible with common exterior grade sealants
- Installs to top of floor or directly to panel framing
- Tested to ASTM E2307 for Window Wall Assemblies



SpecSeal® AS200 Elastomeric Spray

SpecSeal® AS200 Elastomeric Spray is a latex-based elastomeric firestop spray for construction joint applications. AS200 cures to form a durable seal that resists the passage of the products of combustion while accommodating for high dynamic joint movement.

- Applied with airless spray equipment
- Highly flexible to accommodate for dynamic joint conditions
- Tested for up to 4 Hour fire resistance rating when tested to ASTM E1966 (UL2079) and CAN/ULC-S115



SpecSeal® Fast Tack Firestop Spray

SpecSeal® Fast Tack™ Firestop Spray is the ultimate in weather resistant firestop sprays. Fast Tack's hybrid copolymer formula was developed to counter the stalling effects of weather while providing unmatched washout resistance and the industry's fastest tack-free times. Fast Tack outperforms and outlasts all competing firestop coatings providing the most versatile protection on the market.

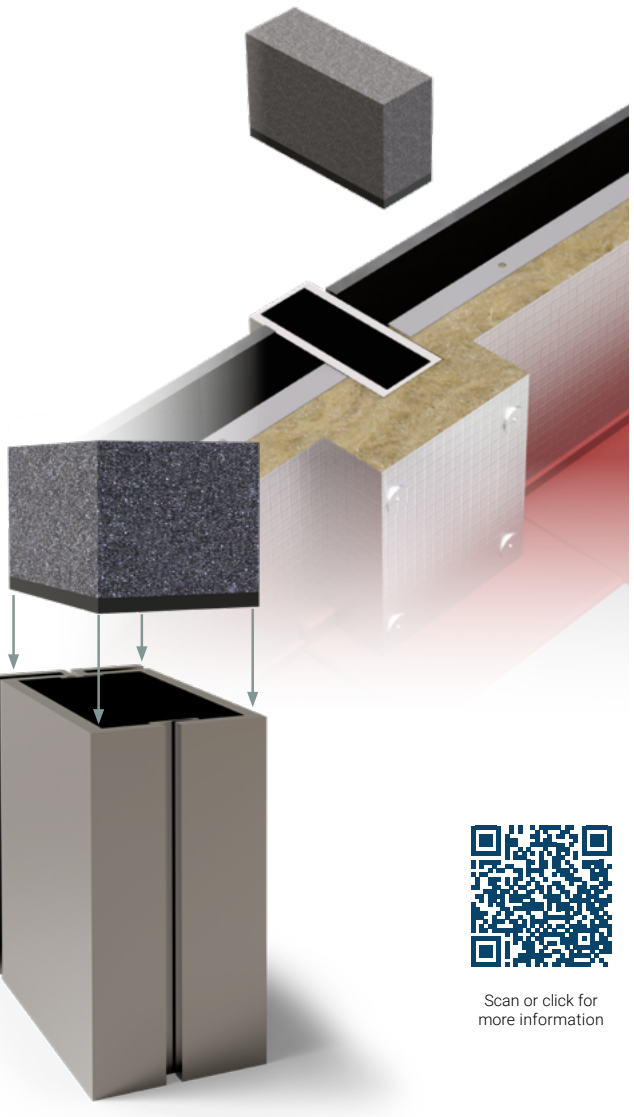
- Spray up till the first drops of rain
- Tack Free within 35 minutes
- Resistant to Wind-Driven Rain, ASTM D6904
- Will not Washout
- Cures even in below freezing conditions



SpecSeal® MP Mullion Plugs

SpecSeal® Curtain Wall Mullion Plug is a non-halogenated, fire-retardant foam plug laminated with a layer of intumescent foam designed to easily fit into hollow aluminum curtain wall framing members. The resilient foam plug absorbs sound, offers stability under varying environmental temperatures, while functioning as a fireblock and smoke-sealing system within the hollow aluminum framing. The Mullion Plugs may be cut into various sizes and shapes based on customer specifications and project requirements for a unique solution that fits the application parameters with tight, well-controlled tolerances improving sealing capabilities beyond field-applied, untested construction foams, upholstery foams, sealants, or expandable spray foams. SpecSeal® Curtain Wall Mullion Plugs are certified by UL as approved "Accessories for Use in for Perimeter Fire Containment Systems" (Category XHDI) and specified in multiple Intertek published design listings.

- Flame retardant foam meets UL 94 HF-1
- Intumescent foam layer expands 10-15 times under fire conditions
- Air leakage rated <1 CFM
- Intertek Listed and UL Certified (XHDI)



SpecSeal® ES Elastomeric Firestop Sealant

SpecSeal® ES Sealant is a latex-based gun grade elastomeric firestop sealant designed for construction joint applications. Once cured, ES Sealant forms a flexible shield against the passage of fire and smoke. In dynamic joint conditions, ES Sealant is tested to accommodate up to 25% compression/extension of the installed joint width.

- Highly elastomeric gun grade sealant
- Tested for up to 4 Hour fire resistance rating when tested to ASTM E1966 (UL2079) and CAN/ULC-S115.
- Can be sanded and painted to match its surroundings
- Listed in over 45 UL® Tested Construction Joint Systems when tested to ASTM E1966 (UL2079) and CAN/ULC-S115



Scan or click for more information

SpecSeal® AS200 Elastomeric Spray

SpecSeal® AS200 Elastomeric Spray is a latex-based elastomeric firestop spray for construction joint applications. AS200 cures to form a durable seal that resists the passage of the products of combustion while accommodating for high dynamic joint movement.

- Applied with airless spray equipment
- Highly flexible to accommodate for dynamic joint conditions
- Tested for up to 4 Hour fire resistance rating when tested to ASTM E1966 (UL2079) and CAN/ULC-S115



Scan or click for more information

SpecSeal® LC Endothermic Sealant

SpecSeal® LC Endothermic Sealant is a latex-based gun grade firestop sealant for construction joints and non-combustible penetrations. After application, LC Sealant cures to form a flexible seal against the propagation of fire. Under fire exposure, LC absorbs heat and release water vapor resisting the progress of smoke and flame.

- Installer Friendly, easily applied with standard caulking gun
- Can be troweled on for larger applications
- Tested for up to 4 Hours of fire resistance when tested to ASTM E1966/UL2079, ASTM E814/UL1479, and CAN/ULC-S115
- Listed in over 80 UL® Tested Firestop Systems



Scan or click for more information

SpecSeal® SIL Silicone Sealant

SpecSeal® SIL300 Silicone Sealant is a high performance silicone firestop sealant tested to resist the passage of smoke, flame and water through construction joints and through-penetrations. SIL300 Sealant cures to form a flexible seal and carries a Class 1 W Rating for water resistance (Per ANSI/UL1479).

- Available in a Gun Grade or Self Leveling
- Ozone and UV Resistant
- Excellent recovery from joint extension and compression
- Listed in over 175 UL® Tested Systems

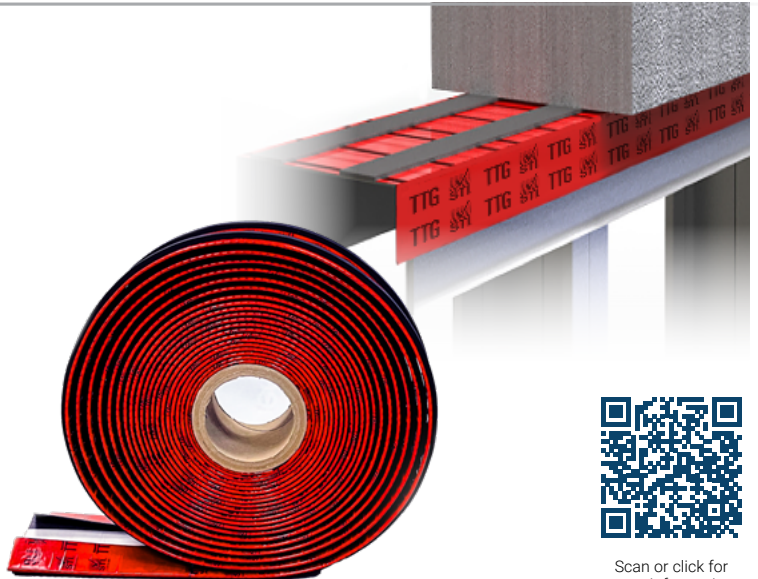


Scan or click for more information

TTG Track Top Gasket

TTG Track Top Gasket makes short work of construction joints in gypsum board construction. TTG eliminates the need for firestop sealants or sprays by firestopping as the wall is constructed. Track Top Gasket is easily cut to length with scissors or a sharp knife, installing quick with no waste.

- Works with any ceiling track
- Tested for both standard and shaft wall construction
- Allows for 100% compression and extension
- Available in Red for easy identification and inspection



Scan or click for more information

SpeedFlex® SFJP Joint Profile System

SpeedFlex® Joint Profile partners with SpecSeal® spray-applied coatings to provide unsurpassed joint movement capabilities in standard gypsum board construction. SpeedFlex® Joint Profile eliminates the need for traditional forming materials allowing for reduced application times increasing productivity.

- Allows 100 % compression or extension
- Excellent remediation tool for cracked or deficient joints
- Cost effective alternative to traditional joint forming materials



Scan or click for more information

SpecSeal SNS Smoke'N'Sound Acoustical Spray

SpecSeal® Smoke 'N' Sound Spray is a high quality acrylic latex spray designed for static or minimally dynamic linear joints or gaps. SpecSeal® Smoke 'N' Sound spray is formulated to adhere to all common construction surfaces and may be applied using airless spray equipment or with a brush (for small applications and touch ups).

- Water-based—for easy installation and cleanup
- Excellent smoke seal
- Acoustically tested—reduces noise transmission
- Safe—low VOCs—no solvents, and non-halogenated
- Auto-bonding—allows spray to adhere to cured spray
- Paintable (when dry)



Scan or click for more information

SpecSeal SNS Smoke'N'Sound Acoustical Sealant

SpecSeal® Smoke 'N' Sound Sealant is a high quality acrylic latex sealant designed for sealing through-penetrations (such as pipes, conduits, cabling, busways, openings), membrane penetrations (such as p-traps and outlet boxes) in smoke rated walls.

- Economical - high performance without the high price
- Water resistant - will not re-emulsify when dry
- Remains flexible - allows movement
- Acoustically tested, reduces noise transmission
- Paintable when dry



Scan or click for more information



Environmental stewardship

Many of our products have contributed to sustainability programs including LEED and Living Building Challenge 4.0 and are GREENGOLD certified by UL. We are committed to providing solutions that are environmentally friendly.

- Producing products using environmentally friendly processes
- Using reclaimed/recycled ingredients wherever possible
- Using non-hazardous ingredients
- Examining environmental issues when developing products
- Preventing pollution, reduce waste and minimize consumption of resources
- Respect wider global impact of our activates including shipping and warehousing
- Educating and motivating employees to carry out work in an environmentally friendly manner
- Encouraging environmental protection among suppliers and subcontractors
- Using sensors and energy efficient lighting systems and components at all facilities
- Encouraging water conservation practices and use fixtures and equipment that conserve water in all facilities



North America

Corporate Headquarters

210 Evans Way
Somerville, NJ 08876 USA
Tel: +1 908 526 8000
Email: customerservice@stifirestop.com

Latin America

Regional Office

Av. Das Nacoes Unidas 8501, 17° andar
Sao Paulo – SP, Brasil 05425-070
Tel: +55 (11) 3434 6662
Email: cs_latin_america@stifirestop.com

Europe

Regional Office

118 Avenue de France
Paris, 75013, France
Tel: +33 674 930 111
Email: cs_europe@stifirestop.com

Middle East

Regional Office

The Bridge Tower, Office 202
Dubai Sports City,
Dubai, United Arab Emirates
Tel: +971 55 872 11 89
Email: cs_middle_east@stifirestop.com

Southeast Asia

Regional Office

77, Robinson Road
#13-00, Robinson 77
Singapore 068896
Tel: +65-96369000
Email: cs_south_east_asia@stifirestop.com

China

Regional Office

Room 2111, Block C, South Tower, The Hub
1068 Xin Gang East Road, Haizhu District
Guangzhou, PR China 510335
Tel: +86-20-89048831
Email: cs_greater_china@stifirestop.com

India

Regional Office

Mumbai
Maharashtra, India
Tel: +91 98 19 79 69 15
Email: cs_india@stifirestop.com

We engineer peace of mind.

1 (800) 992-1180 stifirestop.com

