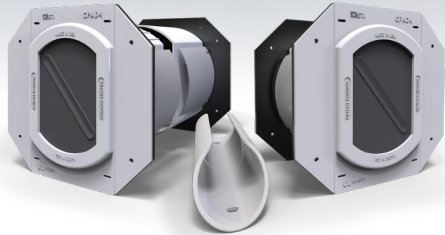




Add more protection for your
frontline healthcare workers...



CPAD[®]
Clinician Patient
Access Device




STI[®]
Specified
Technologies Inc.



stifirestop.com



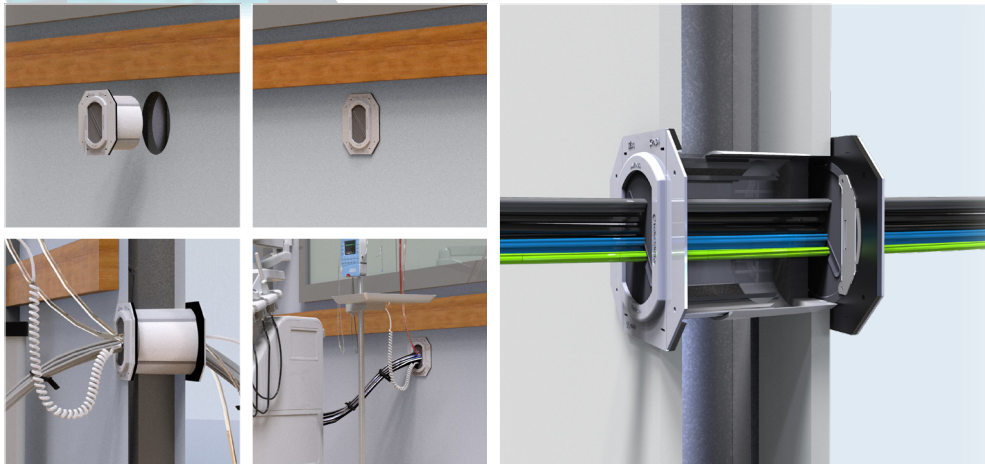
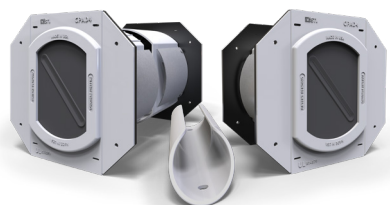
ZSTI3510-32020


STI[®]
Specified
Technologies Inc.



...to ensure better care for their patients.

Keeping your staff safe and healthy is paramount in order to provide the highest quality uninterrupted patient care. When moving infusion pumps and monitoring equipment to the corridor in order to conserve PPE and reduce disruptions to convalescing patients, the Clinician Patient Access Device is the ideal solution. CPAD provides a safe pathway engineered to circumvent potential trip hazards and pinch points that can adversely affect patient care.



ORDERING INFORMATION

Cat. No.	UPC No.	Description	(UOM) Qty.	Case Qty.	Weight (Each)
CPAD4K	730573009353	One clinical pass through device for 30 minute rated corridor walls with insertion tool	1	1	3.8 lbs (1.72 kg)
CPADIT	730573009369	Insertion Tool for use with Clinician Patient Access Device	1	10	0.425 lbs (0.192 kg)

TEST STANDARDS: ASTM E814 (ANSI/UL1479), NFPA 101 (Life Safety Code®)

Gray Color

The better solution for passing temporary patient services through corridor walls.

The Clinician Patient Access Device is a better solution for passing temporary patient services through corridor walls. Its maintenance free design allows for up to 100% visual fill of cables, tubes, or other patient services while preventing trips and falls and maintaining a positive seal for particulate air and noise transfer.

- Self-sealing as services are added and removed
- Flush design for ADA compliance in corridors and patient rooms
- Fire-rated and NFPA 101 for use in 1/2 hour corridor walls