



Your partners for continuous compliance
in a healthcare facility.
BARRIER MANAGEMENT SUITE OF SOLUTIONS

 **Specified
Technologies Inc.**
Firestop, Smoke, & Sound Solutions

Facility Compliance Isn't Just Our Mission... It's Our Expertise.

In the environment of care, compliance isn't a box to check — it's an ongoing responsibility. Healthcare facilities must be designed, built, and maintained with life safety in mind at every stage of the building lifecycle.

For over 35 years, STI has partnered with the healthcare industry to deliver comprehensive, continuous compliance solutions for complex firestopping challenges. We are privileged to work with a wide range of healthcare organizations, from the most prestigious ones to smaller hospitals that need no less support and expertise.

Our singular focus on firestopping means that we are dedicated to finding the best firestopping solutions that take the life cycle-costs of a facility into account. Some of our most notable inventions, such as the EZ Path® line of pathways for low-voltage cabling or the Barrier Management Program, are the result of a close collaboration with our hospital partners to resolve what was then the intractable problem of keeping their facilities in constant compliance.

Over the years we've trained tens of thousands of healthcare and trade professionals involved in designing the proper long-term solutions, installing them correctly and teaching them how to inspect them properly, to maintain compliance. As you would expect, we also learned a lot from them, which allowed us to constantly improve our methods and offerings. That's why our FIT2 training program is recognized as the gold standard of firestop instruction throughout the industry.

STI's products are proudly made or assembled in the U.S., and many carry UL's GreenGuard Gold Certification — reflecting our commitment to clean, sustainable formulations. We protect lives, assets, and the environment.



1 Define Compliance Objectives

Clear compliance objectives are the foundation of every safe healthcare facility. Engaging all stakeholders early sets shared expectations for constructing, maintaining, and inspecting rated barriers – keeping patients safe throughout the building’s lifecycle.

Components of a Compliance Objective

A strong compliance objective outlines expectations for barriers, penetrations, and pathways across the building’s lifecycle. A Policy & Procedure document formalizes these expectations, helping leaders drive long-term compliance and avoid costly maintenance issues.

DNV and Joint Commission surveys reinforce the importance of life safety. Establishing clear objectives early on promotes accountability, consistency, and barrier integrity.

3 Construct with Purpose

Executing the design means every trade – drywall, mechanical, plumbing, IT – follows tested and approved assemblies for every penetration and joint. Pre-construction risk assessment (PCRA) meetings keep the entire project team aligned and reduces scheduling delays.

Avoid value engineering shortcuts: upfront savings often lead to deferred maintenance, inspection failures, and remobilization costs.

STI SYNC’s Firestop Locator (FSL) automatically imports firestop data from the FCM tool, verifying and documenting every location in real time. GCs and QA/QC teams can instantly validate installations against approved systems.

2 Design with Intent

Early collaboration between facilities leaders, architects, engineers, and firestop experts is essential. STI’s dedicated healthcare team leads the industry in Barrier Management Programs (BMPs) that support defend-in-place protocols. Engaging at the design stage ensures proper product selection, UL systems, and installation methods from the start.

Specifying devices like EZ Path® Fire-Rated Pathways, Track Top Gasket, and Cast-In Firestop Devices eliminates reliance on sealants and sprays, dramatically reducing long-term maintenance. Integration of these assets provides the cornerstone of STI’s Strategy for Continuous Compliance.

4 Maintain with Confidence

STI’s Strategy for Continuous Compliance delivers a robust Barrier Management Program – reducing maintenance interventions and keeping facilities inspection-ready. The STI SYNC FSL tool provides a living record of all firestopping installations, past, present, and future. Ongoing Continuous Education programs, tailored to each facility, ensure STI remains your Partner in Healthcare Compliance long after the building opens.

Continuous Compliance starts and continues with STI.



CHILDREN'S HOSPITAL OF PHILADELPHIA - PHILA., PA



MOUNT SINAI MEDICAL CENTER - NEW YORK, NY



CLEVELAND CLINIC - CLEVELAND, OH



DANA FARBER CANCER INSTITUTE - BOSTON, MA



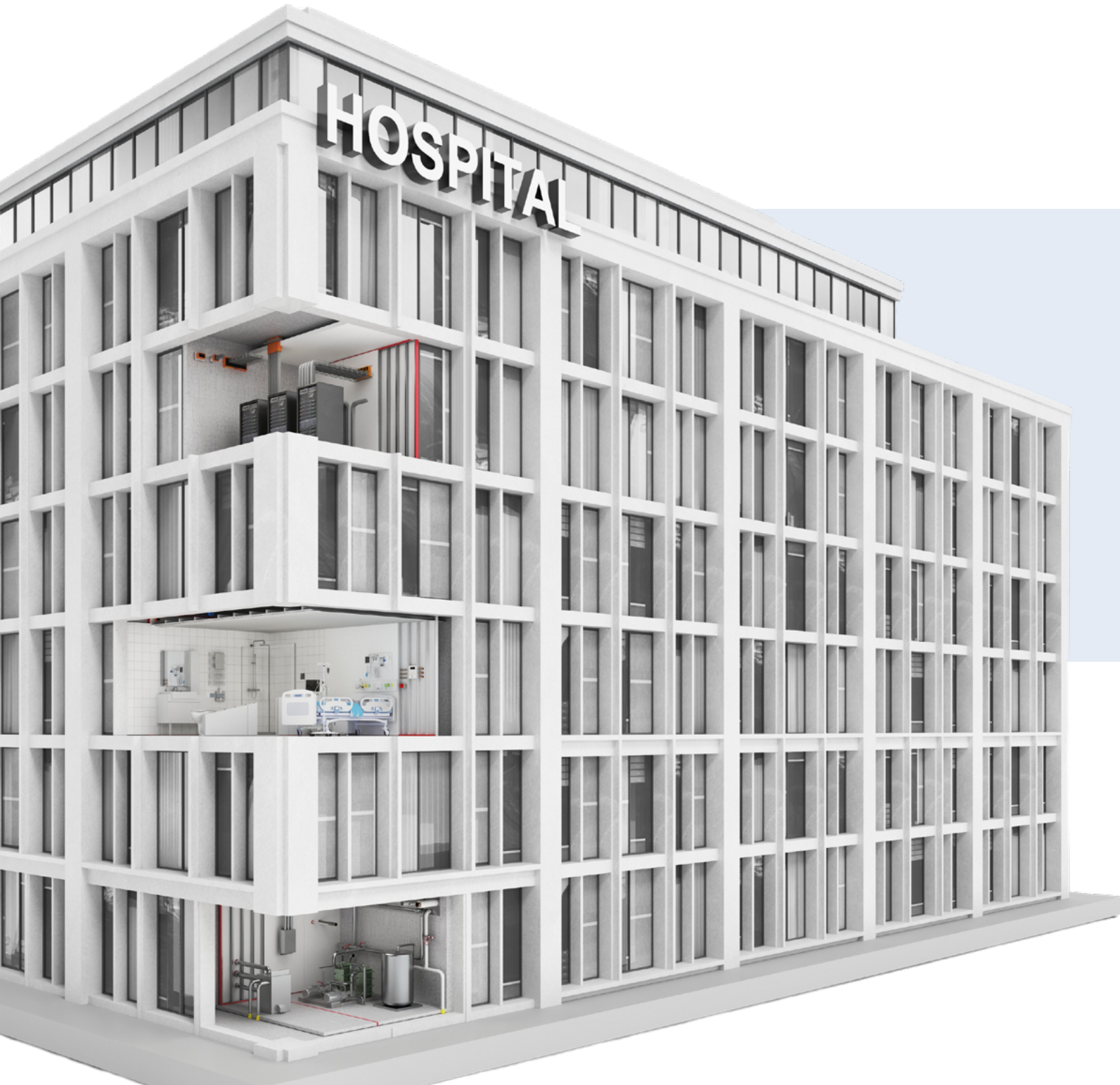
THE JOHNS HOPKINS HOSPITAL - BALTIMORE, MD



CALGARY HEALTH SOUTH - CALGARY, AB, CANADA

Healthcare Facilities

STI has developed a solutions-oriented approach to facility management. Accomplished through STI's "Strategy for Continuous Compliance," STI partners with healthcare facilities to remove uncertainty, reduce inspection stress, and significantly reduce reactive maintenance. By combining innovative device technology with a structured maintenance protocol, the approach ensures maximum compliance in rated barriers, from initial installation through the lifecycle of the building.



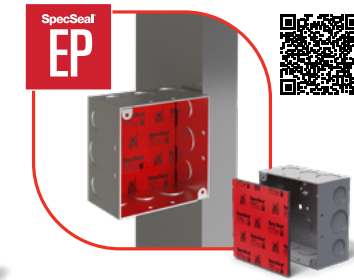
Patient Room Firestop Solutions



Firestop Grommet
EZ-Firestop® Grommets seal penetrations of individual and small bundles of cables through gypsum board walls.



Smoke & Acoustical Pathway
EZ Path® Series 33 and 44NEZ Smoke & Acoustical Pathway for non-rated floor, ceilings, and walls, provide exceptional cable capacity ranging from 0 up to 100% visual fill.



Electrical Box Insert
SpecSeal® EP Powershield Electrical Box Inserts install within steel electrical boxes. Suited for remediation as well as preinstalled before the job site.



TTG Track Top Gasket
SpeedFlex® TTG Track Top Gasket makes short work of construction joints in gypsum board construction.



Intumescent Sealant
SpecSeal® LCI Firestop Sealant is a water-based intumescent sealant intended for a wide range of through-penetration and construction joint applications.



Closet Flange Firestop Gasket
SpecSeal® Closet Flange Firestop Gaskets are one-piece rubber intumescent pad installs beneath a closet flange to firestop the opening.



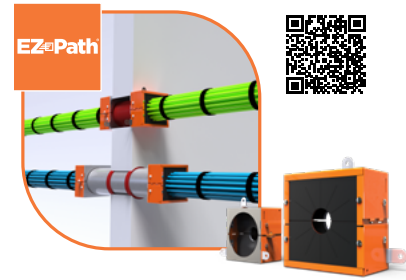
Elastomeric Spray
SpecSeal® AS200 is a latex-based firestop for construction joints and perimeter fire barriers, providing a durable seal that blocks combustion products and accommodates high dynamic joint movement.

Data Closet Firestop Solutions



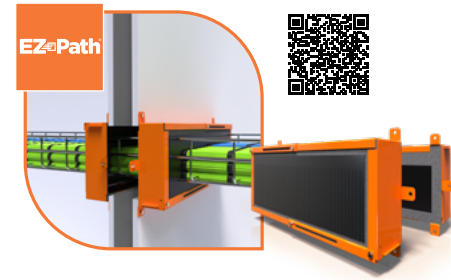
EZ Path® Series 84+

EZ Path® Series 84+ Fire-Rated Pathway for high cable volume conditions through fire-rated walls eliminates ongoing maintenance.



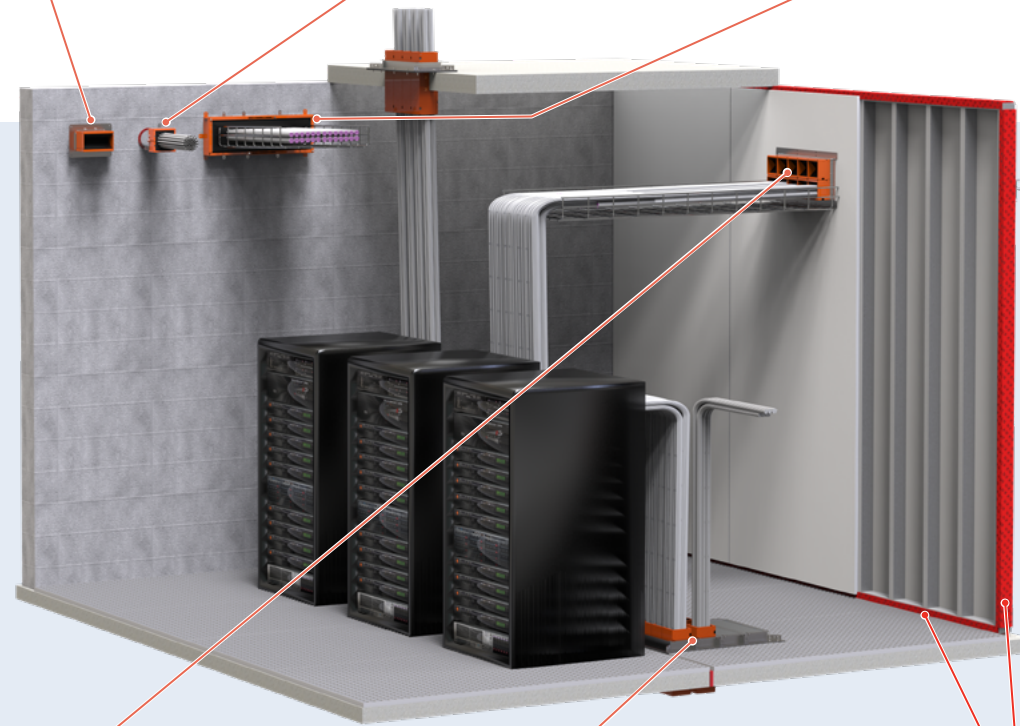
EZ Path® Retrofit Device

EZ Path® Retrofit Devices brings non-compliant cable sleeves and deficient openings back into code compliance quickly.



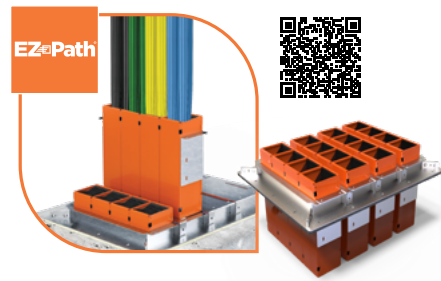
EZ Path® Cable Tray Retrofit Device

EZ Path® Cable Tray Retrofit Device easily remediates existing cable trays of up to 100% visual fill to restore fire performance without additional firestop products.



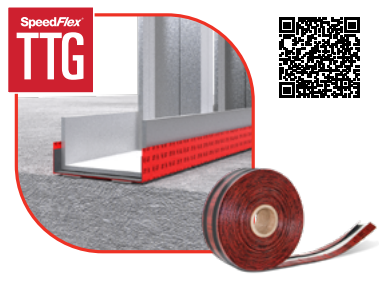
EZ Path® High Capacity Wall Plates

EZ Path® Fire-Rated Pathways are designed for high cable volume conditions through fire-rated walls without the burden of ongoing maintenance.



EZ Path® Modular Scalable Floor Grid

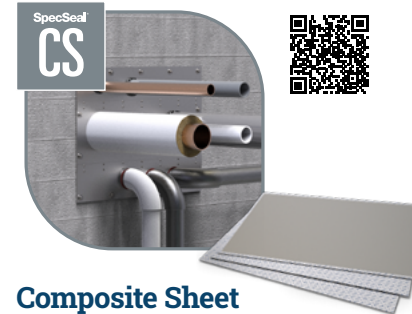
EZ Path® Fire-Rated Pathways are designed for high cable volume conditions through fire-rated floors without the burden of ongoing maintenance.



TTG Track Top Gasket

SpeedFlex® TTG Track Top Gasket makes short work of construction joints in gypsum board construction.

Mechanical Room Firestop Solutions



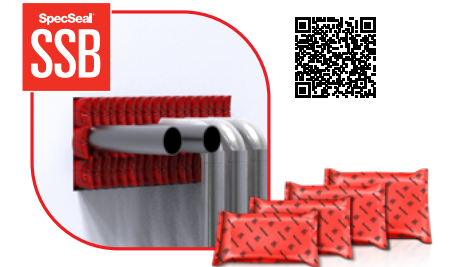
Composite Sheet

SpecSeal® Composite Sheet is a solution for large openings where a permanent seal is required.



Firestop Blocks

SpecSeal® Firestop Blocks are foam-like bricks that expand in high temperatures to block fire, smoke, and gas.



Intumescent Firestop Pillows

SpecSeal® SSB Firestop Pillows compress to fit around any penetrant, ideal for new and existing firestop conditions, even complex ones.



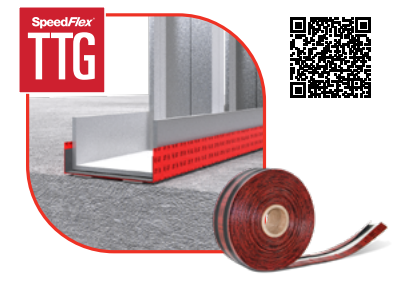
Cast-in Firestop Device

SpecSeal® CID Cast-In Firestop Devices eliminate core-drilling and firestop after the concrete form and firestop rolled into a single device.



Intumescent Firestop Sealant

SpecSeal® SSS Sealant incorporates our proprietary two-stage intumescent technology making it the premium choice for any combustible or non-combustible penetrants.



TTG Track Top Gasket

SpeedFlex® TTG Track Top Gasket makes short work of construction joints in gypsum board construction.

Design and construct to the standard.



Define the standard.

- ✓ Establishes the facilities standards for firestopping.
- ✓ Configures product/system options for FCM.
- ✓ Provides a standard for QA/QC from the beginning of the project and through its maintenance.



Design and build to the standard.

- ✓ Revit Plugin that scans a 3D model to find every penetration and joint condition using clash detection.
- ✓ Identifies all the clashes and maps them to the products & listings from the project BMP.



Verify and maintain the standard.

- ✓ FSL imports the firestop data from FCM.
- ✓ The GC's QA/QC teams can now verify field installations against the approved systems and designs.
- ✓ At building turnover, FSL becomes the living record for the building owner.

Digital Tools for Firestop Compliance



Guide Specifications for products and solutions addresses common firestop issues. STI provides easily editable Word formats that allow you to create project specifications. Each Guide Specification includes only the language and firestop products relevant to its division and can be used as-is or as additional content in an existing specification.



STI Firestop offers BIM objects for architects and engineers to import into building models. Developed using Autodesk Revit®, these objects offer a quick and effective method to integrate firestop into your complex building design.



Generate a Customized LEED® Credit Letter for submission in any project.



The Firestop University provides access to STI's learning material and product tutorials.

- Receive instant notifications when new content is added
- Immediate score feedback after assessment
- Mobile device compatible



Generate a selection of firestop system details on a CAD detail sheet.



- Find firestop systems on your phone, tablet, or the web
- Streamlined firestop system submittal package
- Integrate user documents and company logos
- Embed engineering judgement documents



The largest resource of firestop experts in the industry under one roof that deliver solutions in 24 hours*:

- Engineering judgments
- Specification reviews
- Custom firestop training
- Technical inquiries & LEED letters
- Project plan review
- Documentation for AHJ's
- Building Information Modeling (BIM)

*Average turnaround time.

Your Partners in Healthcare

Ken Pedley

Director of Healthcare Partnerships

kpedley@stifirestop.com mobile: 248.660.7239

Malcolm Sparling

Strategic Accounts Manager, Healthcare - Midwest

mshparling@stifirestop.com mobile: 913.296.3108

Nathan Wayne

Strategic Accounts Manager, Healthcare - Northwest

nwayne@stifirestop.com mobile: 253.324.2146

Joe Lanza

Strategic Accounts Manager, Healthcare - Northeast

jlanza@stifirestop.com mobile: 908-399-4100

Ismael Lopez-Ferratt

Strategic Accounts Manager, Healthcare - Southwest

ilopez-ferratt@stifirestop.com mobile: 702.271.4344

Scott Willems

Strategic Account Manager, Healthcare - Mid & South Atlantic

swillems@stifirestop.com mobile: 615.761.6923



North America

Corporate Headquarters

210 Evans Way
Somerville, NJ 08876 USA
Tel: +1 908 526 8000
Email: customerservice@stifirestop.com

Latin America

Regional Office

Av. Das Nacoes Unidas 8501, 17° andar
Sao Paulo – SP, Brasil 05425-070
Tel: +55 (11) 3434 6662
Email: cs_latin_america@stifirestop.com

Southeast Asia

Regional Office

77, Robinson Road
#13-00, Robinson 77
Singapore 068896
Tel: +65-96369000
Email: cs_south_east_asia@stifirestop.com

Europe

Regional Office

118 Avenue de France
Paris, 75013, France
Tel: +33 674 930 111
Email: cs_europe@stifirestop.com

Middle East

Regional Office

The Bridge Tower, Office 202
Dubai Sports City,
Dubai, United Arab Emirates
Tel: +971 55 872 11 89
Email: cs_middle_east@stifirestop.com

China

Regional Office

Room 2111, Block C, South Tower, The Hub
1068 Xin Gang East Road, Haizhu District
Guangzhou, PR China 510335
Tel: +86-20-89048831
Email: cs_greater_china@stifirestop.com

India

Regional Office

Mumbai
Maharashtra, India
Tel: +91 98 19 79 69 15
Email: cs_india@stifirestop.com