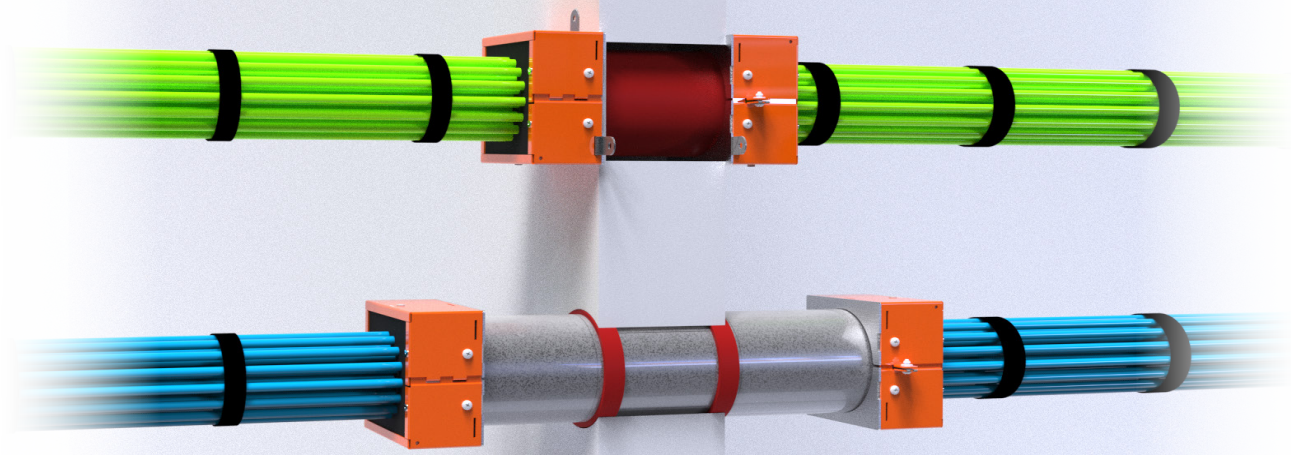


**Get compliant,
easily with**



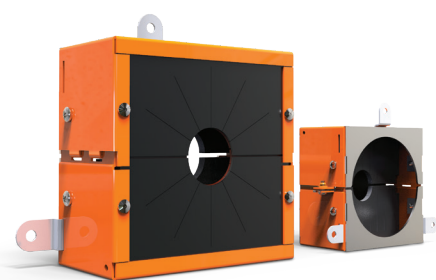
EZ-Path[®]
Retrofit Device



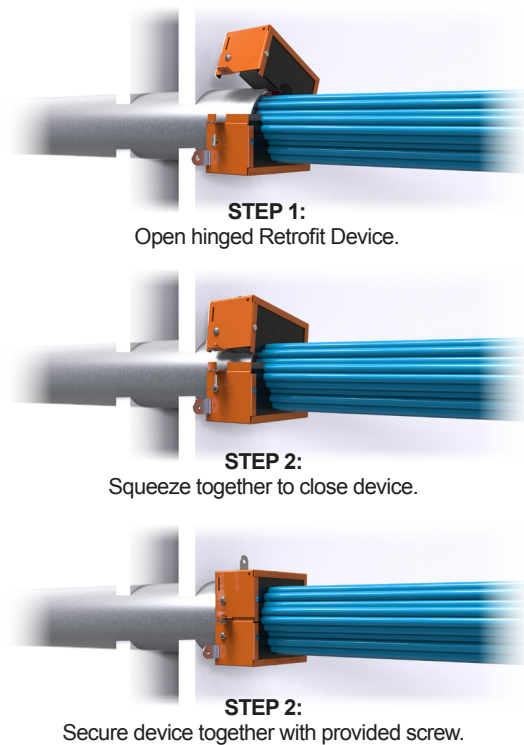


Retrofit Device

Non-compliant cable sleeves are the bane of every facilities team. The **EZ Path® Retrofit Device** brings deficient openings back into code compliance quickly. Its two-part clam shell design installs around projecting sleeves and cable bundles, restoring fire and smoke leakage performance. The **EZ Path® Retrofit Device** easily retrofits sleeves of up to 100% visual fill, restoring fire performance without the need for additional firestop products.

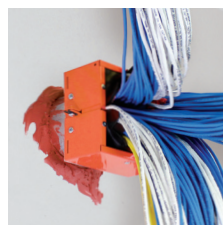


Easy as 1-2-3



Features & Benefits:

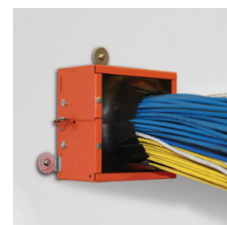
- Sized for 2 in. & 4 in. metallic sleeves
- Designed for cable sleeves & stubs
- Professional fit & finish
- Safety Orange for easy identification
- Suited for round & rectangular openings



Single sleeves



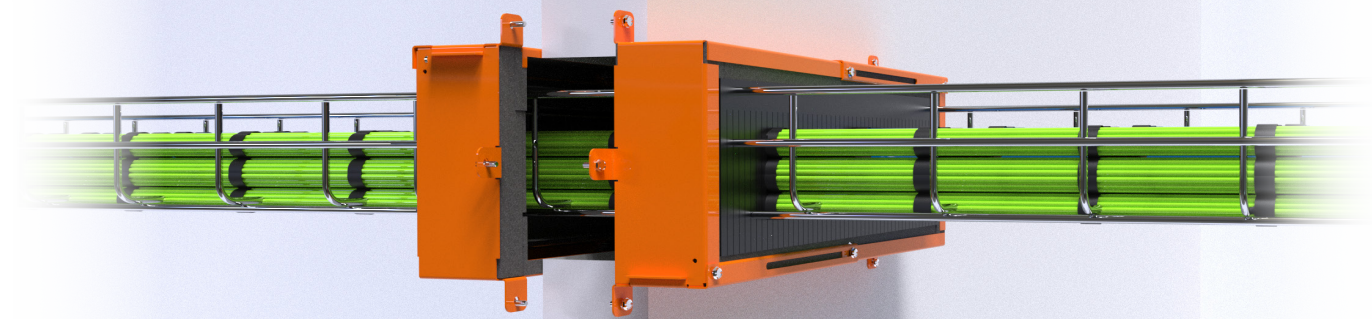
Multiple sleeves



Flush mount sleeves



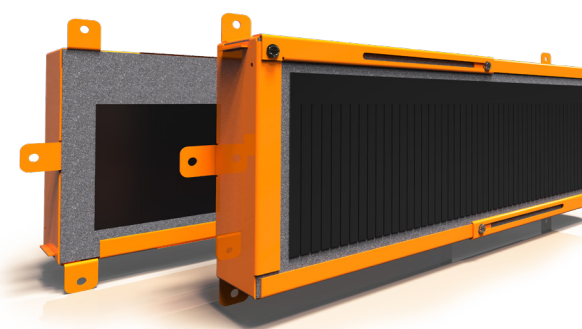
Scan to learn more about **EZDR400 & 200**



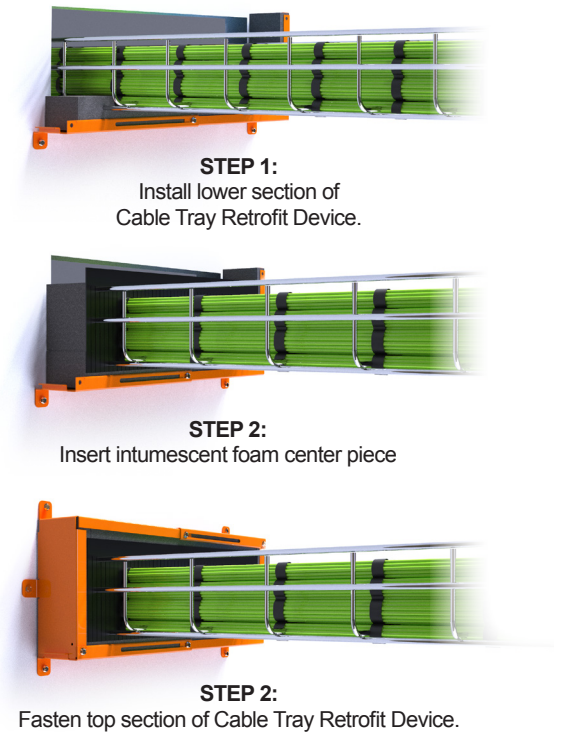
Cable Tray Retrofit Device

EZ Path® Cable Tray Retrofit Device is designed for addressing non-compliant cable tray penetrations in fire-rated wall assemblies. Its split housing design installs around existing cable tray penetrations restoring fire-resistance ratings.

EZ Path® Cable Tray Retrofit Device quickly resolves cable tray penetrations with up to 100% visual fill of cables, restoring fire performance without the need for additional firestop products.



Easy as 1-2-3



Features & Benefits:

- Tested in Concrete & Gypsum Board Walls
- Sizes available for 12 in. (304.8 mm) to 24 in (609.6 mm) wide cable trays
- Tested cable fills from 25 up to 100%
- Suitable for ladder & wire basket style cable trays

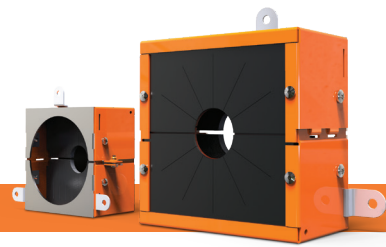


Easily bring existing cable tray installations back into compliance.



Scan to learn more about **EZDR400 & 200**

EZPath[®] Retrofit Device



Single Device

ORDERING INFORMATION



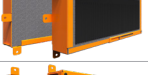




| Catalog Number | UPC Number | Description | (UOM) Qty. | Case Qty. | Device |
|----------------|--------------|---|------------|-----------|---|
| EZDR200 | 730573002001 | Retrofit Device for 2" (2-3/16" or 2-3/8" O.D.) Sleeves, One Pair (2) | 1 | 4 |  |
| EZDR400 | 730573004005 | Retrofit Device for 4" (4-1/2" O.D.) Sleeves, One Pair (2) | 1 | 4 |  |
| EZPR150 | 730573002018 | 1-1/2" Adapter Plate for EZDR200, One Pair (2) | 1 | 1 |  |
| EZPR300 | 730573004012 | 3" Adapter Plate for EZDR400, One Pair (2) | 1 | 1 |  |

EZPath[®] Cable Tray Retrofit Device



Device Pair

ORDERING INFORMATION

| Catalog Number | UPC Number | Description | (UOM) Qty. | Case Qty. | Device |
|----------------|--------------|--|------------|-----------|---|
| EZCTR612 | 730573007396 | Cable Tray Retrofit Device for max 6" by 12" cable trays, One Pair (2) | 1 | 1 |  |
| EZCTR614 | 730573007389 | Cable Tray Retrofit Device for max 6" by 14" cable trays, One Pair (2) | 1 | 1 |  |
| EZCTR616 | 730573007372 | Cable Tray Retrofit Device for max 6" by 16" cable trays, One Pair (2) | 1 | 1 |  |
| EZCTR618 | 730573007365 | Cable Tray Retrofit Device for max 6" by 18" cable trays, One Pair (2) | 1 | 1 |  |
| EZCTR600P | 730573007402 | Oversized opening plates for Cable Tray Retrofit Device, One Pair (2) | 1 | 1 |  |
| EZCTR624 | 730573007419 | Cable Tray Retrofit Device for max 6" by 24" cable trays, One Pair (2) with Slim Mounting Frames | 1 | 1 |  |
| EZCTR624L | 730573951118 | Cable Tray Retrofit Device for max 6" by 24" cable trays, One Pair (2) with Mounting Plates for Oversized Hole in Wall | 1 | 1 |  |