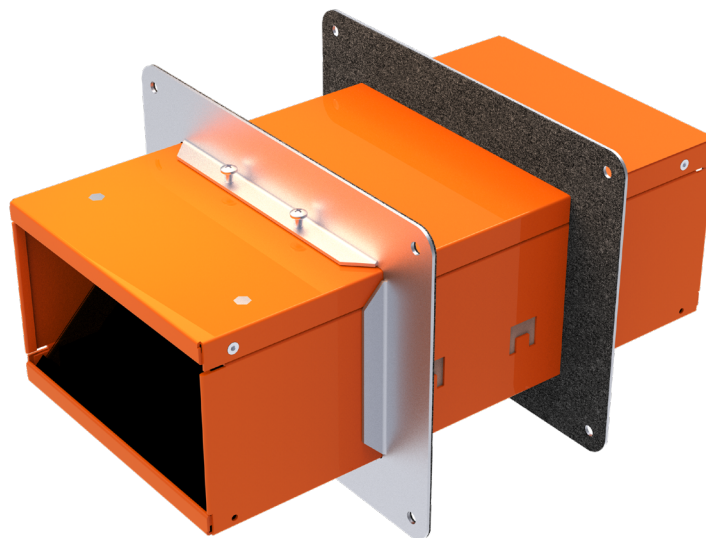


# EZ Path® Series 84+ Fire-Rated Pathway



The EZ Path® Series 84+ Fire-Rated Pathway is a pathway device designed to support high-capacity cable runs through fire-rated walls without the need for firestopping. The device features a built-in fire and smoke sealing system that automatically adjusts to the number of cables installed. Once installed in a fire-rated barrier, cables can be easily added or removed at any time without the need to remove or reinstall firestopping materials.

The Series 84+ is constructed of heavy-gauge galvanized steel, lined with intumescent material engineered for rapid expansion when exposed to fire or high temperatures, quickly sealing the pathway and preventing the passage of fire and smoke. It delivers unmatched cable capacity, supporting up to 406 Cat6 cables (0.236" OD). The device's size and modular compatibility with the EZ Path® Series 44+ allow for multiple configurations that align with common cable tray widths, ensuring every inch of usable tray space translates directly into pathway capacity.



## Applications

EZ Path® Series 84+ Fire-Rated Pathway is designed to accommodate high-capacity cable runs through fire-rated walls. Tested and approved cable capacities range from 0 to 100% visual fill. EZ Path® Series 84+ Fire-Rated Pathway, when installed with the available single-wall plates, is designed for new cable installations. In these installations, the device does not require mechanical attachment to the wall framing and must be installed after the wallboard has been installed. The Series 84+ split body design and multi-gang wall brackets permit installation around previously installed cables if desired. These installations may require mechanical attachment to the wall framing.

EZ Path® Series 84+ Fire-Rated Pathway provides exceptional cable capacity. A single unit installed in a wall exceeds the cable carrying capacity of an 8 in (203 mm) sleeve utilizing typical putty firestop systems (35% cable loading). Multiple ganged pathways utilizing available wall bracket kits provide additional capacity or segregation of cables by use, type, installer or vendor as desired.

## PHYSICAL PROPERTIES

Shell Composition	0.059" (1.5 mm) Galvanized Steel
Device Dimensions	7-1/4" W x 4-5/8" H x 14" L
Cable Loading Area	24.5 sq in (158 sq cm) / 7" (178 mm) x 3-1/2" (89 mm)
Allowable Cable Fill	0 to 100% Visual
Fire Resistance Ratings	1 and 2 hour
Expansion Begins	350°F (177°C)
Volume Expansion	15x
Sample Cable Volume - Cat 6 (0.236" OD)	406 (nom.)
In Service Temperature	-10°F (-23°C) to 120°F (49°C)
Storage Temperature	Less than 120°F (49°C)
Shelf Life	No Limit

# EZ Path® Series 84+ Fire-Rated Pathway

**EZ Path®**  
Fire-Rated Pathway

## Specifications

All data, video, and communications cable bundles shall utilize an enclosed fire-rated pathway device wherever said cables penetrate rated walls. The fire-rated pathway shall contain a built-in fire sealing system that requires no maintenance for 0 to 100% cable fill and is sufficient to maintain the hourly fire rating of the penetrated barrier. The self-contained sealing system shall automatically adjust to the installed cable loading and shall permit cables to be installed, removed, or retrofitted without the need to remove or reinstall firestop materials. The pathway shall be UL Certified and/or FM Systems Approved and tested to the requirements of ASTM E814 (UL1479) and CAN/ULC-S115.

### Specified Divisions

Division 7	07 84 13	Penetration Firestopping
Division 26	26 00 00	Electrical
Division 27	27 00 00	Communications

## Performance

EZ Path® Series 84+ Fire-Rated Pathway is UL Tested and Certified in accordance with ASTM E814 (UL1479) and CAN/ULC-S115. Systems are available for common wall constructions with ratings up to 2 hours.

## Limitations

This product has been designed to be safe with plastics. It has been used extensively and successfully with various types of plastic pipes, tubes, and plastic cable insulations. Variations in these materials, however, make it impossible to guarantee compatibility. STI strongly recommends that the user consult with the pipe, tubing, or cable manufacturer in question regarding any known sensitivities or potential restrictions before applying this product.

## Cable Installation

Cables may easily be added or removed at any time without removing or reinstalling the fire seal. Cables may be added individually or in bundles. Wrapping ends with a low-friction tape facilitates cable insertion. A self-adjusting cable throat automatically accommodates the cable bundle as it passes through the pathway.

## Maintenance

No maintenance of the pathway is typically required.

## System Selection

To find your firestop system or create a submittal, visit <https://systems.stifirestop.com/> to use System Search & Submittal Builder. You may also visit the [UL Online Certifications Directory/UL Product iQ™](#) for complete listings. (Firestop Systems).



## Technical Service

Specified Technologies Inc. provides toll free technical support to assist in product selection and appropriate installation design. UL System designs suitable for submittal or specification purposes are available on request. A complete library of technical information is provided at the company's website [www.stifirestop.com](http://www.stifirestop.com) including Safety Data Sheets (SDS's).

## Precautionary Information

The use of this device is subject to local, regional and national codes. Consult the local Building Code Official or Authority Having Jurisdiction regarding any regional or local requirements that might influence the selection or use of this product.

## Availability

EZ Path® Products are available from Specified Technologies Inc. (STI) authorized distributors. For additional purchasing and technical information, call 1-800-992-1180 or visit [www.stifirestop.com](http://www.stifirestop.com).

## Features & Benefits

- Easy to install
- No firestopping required
- Modular design enables alignment with standard cable trays
- Compatible with EZ Path® Series 44+ Pathway Device
- Mechanical locking system for quick ganging of devices
- Maximizes usable cavity area in 16" and 24" stud layouts
- Permits cable segregation by use, type, and vendor

# EZ Path® Series 84+ Fire-Rated Pathway



## ORDERING INFORMATION - SINGLE DEVICE

Catalog Number	UPC Number	Description	(UOM) Qty.	Case Qty.	Weight (Each)
EZD84S2	730573952313	Series 84+ Fire-Rated Pathway Device	1	1	8.6 lbs.
EZDP84S2	730573952399	Series 84+ Fire-Rated Pathway Kit – single device with wall plates and labels	1	1	11 lbs.

## ORDERING INFORMATION - GANG PLATES FOR WALLS

Catalog Number	UPC Number	Description	(UOM) Qty.	Case Qty.	Weight (Each)
EZP184W	730573952344	Series 84+ EZ Path Single Wall Plate Bracket	1	1	2 lbs.
EZP284W	730573952351	Series 84+ Multi-gang Wall Plate Brackets for 2 devices, single row	1	1	4 lbs.
EZP484W	730573952375	Series 84+ Multi-gang Wall Plate Brackets for 3-4 devices, single row	1	1	6.8 lbs
EZP684W	730573952320	Series 84+ Multi-gang Wall Plate Brackets for 5-6 devices, single row	1	1	9.8 lbs
EZP284WD	730573952368	Series 84+ Multi-gang Wall Plate Brackets for 4 devices, double row	1	1	4.4 lbs
EZP484WD	730573952382	Series 84+ Multi-gang Wall Plate Brackets for 6-8 devices, double row	1	1	7.2 lbs
EZP684WD	730573952337	Series 84+ Multi-gang Wall Plate Brackets for 10-12 devices, double row	1	1	10.15 lbs

IMPORTANT NOTICE: ALL STATEMENTS, TECHNICAL INFORMATION, AND RECOMMENDATIONS CONTAINED HEREIN ARE BASED UPON TESTING BELIEVED TO BE RELIABLE, BUT THE ACCURACY AND COMPLETENESS THEREOF IS NOT GUARANTEED.

STI TYPICALLY WARRANTIES ITS PRODUCTS FOR ONE FULL YEAR. FOR COMPLETE DETAILS OF OUR STANDARD WARRANTY, PLEASE VISIT [WWW.STIFIRESTOP.COM/LEGAL/WARRANTY](http://WWW.STIFIRESTOP.COM/LEGAL/WARRANTY)

MADE IN THE USA – © 2026 SPECIFIED TECHNOLOGIES INC.

