



Clinician Patient Access Device

Clinician Patient Access Devices are designed to allow temporary services such as infusion pump tubing, patient monitoring lead wires and cables, ventilator circuit tubing and related extension cords, to pass from patient rooms through corridor walls into the corridor. Each device is fitted with self-sealing silicone rubber gaskets to ensure that the lines, wires, cords, or cables are sealed to restrict air flow, contaminants, and noise. There are no sharp edges to pierce or slice the integrity of the inserted lines. Simply push the temporary service through the device, and it quickly and automatically seals

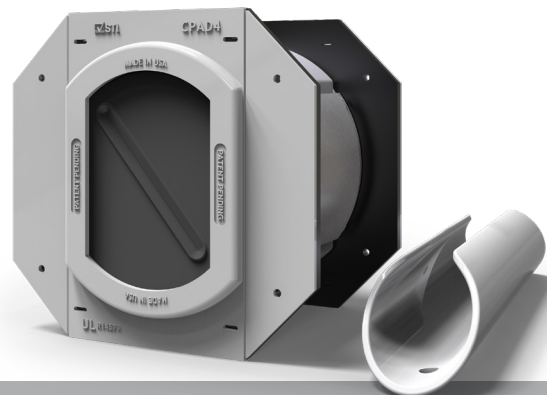
Clinician Patient Access Devices allow clinical staff to conserve personal protective equipment (PPE) by moving patient care equipment into the corridors. This permits some normal patient care practices to be conducted in the safety of the corridor and reduce the frequency of staff/patient interaction as during the COVID-19 pandemic where many health care organizations employed this strategy. The devices also allow nursing staff to avoid running lines, wires, cords, or cables through doors openings, thereby, eliminating a potential trip hazard, damage to patient care lines, and the need to quickly close the door in an emergency. Devices do not require any additional seal or cover when not in use.

Clinician Patient Access Devices have a compact design that installs flush with wall surfaces and does not project into the corridor or patient room, making it fully ADA compliant. The molded thermoplastic body and integrated silicone rubber gaskets can be easily disinfected using normal cleaning protocols. The devices are tested to maintain Sound Transmission Class (STC) Ratings to meet HIPAA requirements for acoustical purposes and also meet ASTM E814 (ANSI/UL1479) for use in 1/2 hour fire-rated corridor walls as per NFPA 101 (Life Safety Code®).



Features & Benefits

- Designed for Temporary Patient Services in 1/2 hour rated Corridor Walls (per NFPA 101)
- Self-sealing as services are added and removed
- HIPAA and ADA Compliant
- Clean appearance allows it to blend seamlessly where aesthetics matter



ORDERING INFORMATION

Catalog Number	UPC Number	Description	(UOM) Qty.	Case Qty.	Weight (Each)
CPAD4K	730573009353	One clinical pass through device for 30 minute rated corridor walls with insertion tool	1	1	3.8 lbs (1.72 kg)
CPADIT	730573009369	Insertion Tool for use with Clinician Patient Access Device	1	10	0.425 lbs (0.192 kg)

TEST STANDARDS: ASTM E814 (ANSI/UL1479), NFPA 101 (Life Safety Code®)

Gray Color



1-800-992-1180
stifirestop.com



[Click here to learn more about](#)

