

SpecSeal® Composite Sheet

SpecSeal® Composite Sheet is a lightweight, rigid fire resistant panel consisting of an intumescent layer bonded to a galvanized steel sheet reinforced with steel wire mesh covered with aluminum foil. SpecSeal® Composite Sheet is designed to seal medium to large size openings with a variety of different penetrants in both fire-resistance rated floors and walls. When exposed to temperatures in excess of 350°F (177°C), SpecSeal® Composite Sheet expands minimum 15x to form a dense insulative char that minimizes heat transfer.

Applications

SpecSeal® Composite Sheet is used in conjunction with other STI Firestop Products to seal penetrations through both fire-resistance rated walls and floors for metallic and non-metallic pipes, insulated pipes, cable trays, cables, conduits, steel ducts, busways, or blank openings. SpecSeal® Composite Sheet provides an effective seal against fire, smoke, and combustion byproducts for openings of any shape in common construction assemblies.

Specifications

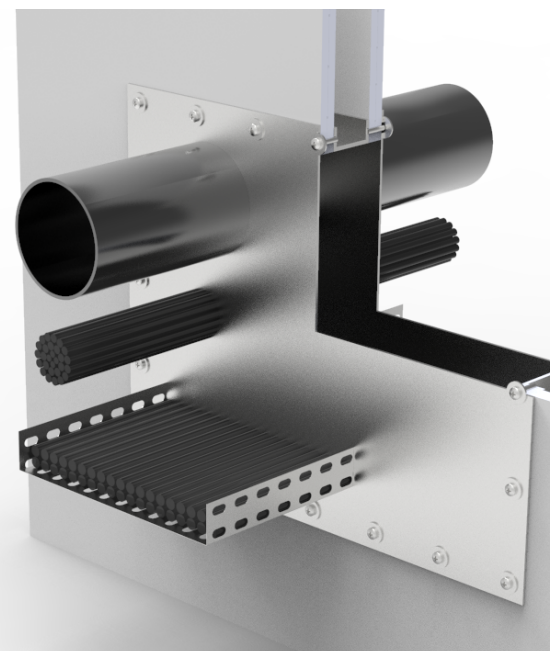
The composite sheet shall be lightweight panel comprised of an intumescent layer bonded to a galvanized steel sheet reinforced with steel wire mesh covered with aluminum foil. The composite sheet shall provide a minimum 15x free expansion and shall contain no water soluble expansion ingredients. The composite sheet shall be UL Certified and tested to the requirements of ASTM E814 (UL1479) and CAN/ULC-S115.

Specified Divisions

| | | |
|-------------|----------|--------------------------|
| Division 7 | 07 84 13 | Penetration Firestopping |
| Division 22 | 22 00 00 | Plumbing |
| Division 23 | 23 00 00 | HVAC |
| Division 26 | 26 00 00 | Electrical |

Performance

SpecSeal® Composite Sheet is the basis for firestop systems that meet the exacting criteria of ASTM E814 (UL1479) and CAN/ULC-S115. UL Systems have been tested for all common forms of construction and many common penetrating items with ratings up to 4 hours.



Features & Benefits

- Lightweight for easy handling and fabrication and less hanging weight on walls
- Easy to cut using sheet metal tools
- Highly intumescent - expands up to 15x
- Hole reduction - used in conjunction with other SpecSeal® or EZ-Path® products for reducing large openings
- Versatile performer for a wide range of complex applications
- Paintable

PHYSICAL PROPERTIES

| | | | |
|------------------------|--|---------------------|--|
| Nominal Thickness | 0.1 in. (2.5 mm) | Storage Temperature | Less than 130°F (54°C) |
| Nominal Weight | 1.4 lb/sq ft (6.9 kg/sq m) Intumescent | Radiation Exposure | Unaffected |
| Expansion Begins | 350°F (177°C) | STC Rating | 55 (Relates to specific construction) (ASTM E 90-04) |
| Volume Expansion | 15x (typical free expansion) | VOC Content | N/A |
| In Service Temperature | -10°F (-23°C) - 130°F (54°C) | Shelf Life | No Limit |

SpecSeal® Composite Sheet



Limitations

This product has been designed to be safe with plastics. It has been used extensively and successfully with various types of plastic pipes, tubes, and plastic cable insulations. Variations in these materials, however, make it impossible to guarantee compatibility. STI strongly recommends that the user consults with the pipe, tubing, or cable manufacturer in question regarding any known sensitivities or potential restrictions before applying this product.

Maintenance

No maintenance is ordinarily required, however, a periodic inspection of fire-resistance rated barriers is recommended to ensure that any new openings, modifications of previously installed firestops, or areas exhibiting physical damage, have been properly sealed or repaired. Subsequent sealing or repairs should be accomplished using SpecSeal® Products per the original approved design.

RETROFIT: Adding Penetrants: Remove firestop sealant/putty and composite sheet. Add penetrating item(s). Cut SpecSeal® Composite Sheet to accommodate new penetrating item(s). Seal per the original UL Certified design.

System Selection

To find your firestop system or create a submittal, visit <https://systems.stifirestop.com/> to use System Search & Submittal Builder. You may also visit the [UL Online Certifications Directory/UL Product iQ™](#) for complete listings. (Firestop Systems).

Technical Service

Specified Technologies Inc. provides toll free technical support to assist in product selection and appropriate installation design. UL System designs suitable for submittal or specification purposes are available on request. A complete library of technical information is provided at the company's website www.stifirestop.com including Safety Data Sheets (SDS's).

Precautionary Information

Consult Safety Data Sheet (SDS) for additional information on the safe handling and disposal of this material.

Availability

SpecSeal® Composite Sheet is available from Specified Technologies Inc. (STI) authorized distributors. For additional purchasing and technical information or for the names and locations of the nearest representative and/or distributor, regarding this and other Specified Technology products, please call 1-800-992-1180 or visit www.stifirestop.com.

ORDERING INFORMATION

| Catalog Number | UPC Number | Size | (UOM) Qty. | Case Qty. | Weight (Each) |
|----------------|--------------|----------------------------|------------|-----------|---------------------|
| CS1628 | 730573116289 | 16" x 28" (41 cm x 71 cm) | 1 | 1 | 5.80 lbs (2.63 kg) |
| CS2436 | 730573124369 | 24" x 36" (61 cm x 92 cm) | 1 | 1 | 10.65 lbs (4.83 kg) |
| CS3636 | 730573141366 | 36" x 36" (92 cm x 92 cm) | 1 | 1 | 15.65 lbs (7.10 kg) |
| CS3641 | 730573136416 | 36" x 41" (92 cm x 104 cm) | 1 | 1 | 16.60 lbs (7.53 kg) |
| CS2852 | 730573136362 | 28" x 52" (71 cm x 132 cm) | 1 | 1 | 16.38 lbs (7.43 kg) |

IMPORTANT NOTICE: ALL STATEMENTS, TECHNICAL INFORMATION, AND RECOMMENDATIONS CONTAINED HEREIN ARE BASED UPON TESTING BELIEVED TO BE RELIABLE, BUT THE ACCURACY AND COMPLETENESS THEREOF IS NOT GUARANTEED.

STI TYPICALLY WARRANTIES ITS PRODUCTS FOR ONE FULL YEAR. FOR COMPLETE DETAILS OF OUR STANDARD WARRANTY, PLEASE VISIT WWW.STIFIRESTOP.COM/LEGAL/WARRANTY

MADE IN THE USA - © 2025 SPECIFIED TECHNOLOGIES INC.

