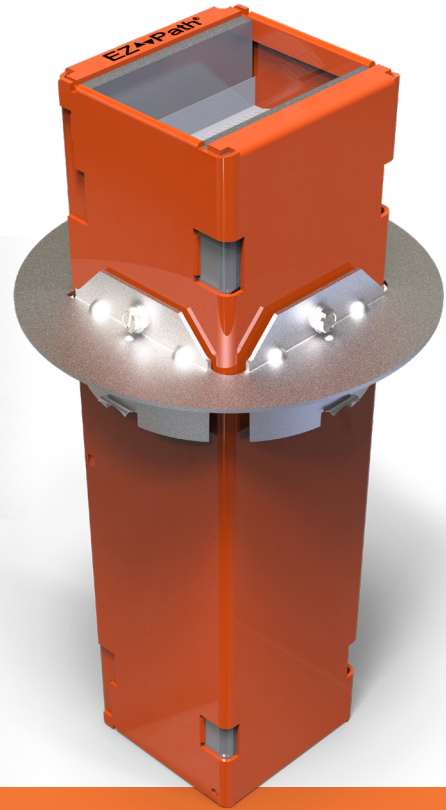


EZ Path® Series 33 Kick-in Floor Plate

The EZ Path® Series 33 Kick-in Floor Plate is designed to lock in place into 4 in (101.5 mm) diameter openings in concrete floors. The Kick-in floor plate incorporates locking teeth that grab into the walls of through openings in concrete floors allowing for installation from top or bottom side of floor. The Series 33 with Kick-in floor plate has been tested in floor penetrations with up to 2 hour equal F&T Ratings.

Features & Benefits

- Tested in Concrete Floors for up to 4 Hr F-Rating
- Sized to fit into a nominal 4 in (101.5 mm) diam opening
- Solid galvanized steel plate for new construction applications
- Lock in place with the heel of your boot



ORDERING INFORMATION

Catalog Number	UPC Number	Description	(UOM) Qty.	Case Qty.	Weight (Each)
EZDP133FK	730573008355	Kick in Floor Plate Kit - Device with split floor plate	1	1	3.53 lbs (1.60 kg)
EZP133K	730573008331	Kick-In Split Floor Plate	1	6	0.71 lbs (0.32 kg)

TEST STANDARDS: ASTM E814 (UL 1479), CAN/ULC-S115

