

# EZ Path® Retrofit Device (EZDR200 & EZDR400)

The EZ Path® Retrofit Device is designed to restore the ratings for overfilled cable sleeve penetrations. The device features a built-in fire and smoke sealing system that can attach either to the sleeve or the barrier surface.

The EZ Path® Retrofit Device consists of a heavy gauge galvanized steel housing containing intumescent materials that expand rapidly when exposed to fire or high temperatures to close off the void area. Its unique two-piece design quickly installs around cable bundles and extended sleeves and can even accommodate standard conduit bushings. The square device shape allows cable exit or entry from multiple directions..

## Applications

EZ Path® Retrofit Device restores non-compliant overfilled sleeve conditions in walls and floors. Cable capacity ranges from 50 to 100% visual fill. The two-piece split device facilitates installation around existing cable bundles. The steel backplate attaches directly to the end of the steel sleeve. For flush-mounted sleeves, mounting tabs allow for attachment to the substrate.

EZ Path® Retrofit Devices are sized for 2 in (2.197 in [56 mm]) to 2.375 in [60 mm] OD and 4 in (4.500" [114 mm]) trade size EMT or rigid steel conduit sleeves or stubs. No additional putty or sealant is required. Existing putty or sealant may be left in place.

## Specifications

All new data comm cable penetrations shall be routed through factory-supplied, maintenance-free, fire-rated pathway devices (Ex. EZ Path® Fire Rated Pathways). For existing sleeves where cable fill percentage exceeds listed system specifications, a factory-supplied, fire-rated retrofit device shall be installed. The device shall be a two-piece split design with intumescent materials and allow 50 to 100 percent visual fill. The device shall be UL Certified and tested to ASTM E814 (UL1479) and CAN/ULC-S115.

### Specified Divisions

Division 7	07 84 13	Penetration Firestopping
Division 26	26 00 00	Electrical
Division 27	27 00 00	Communications

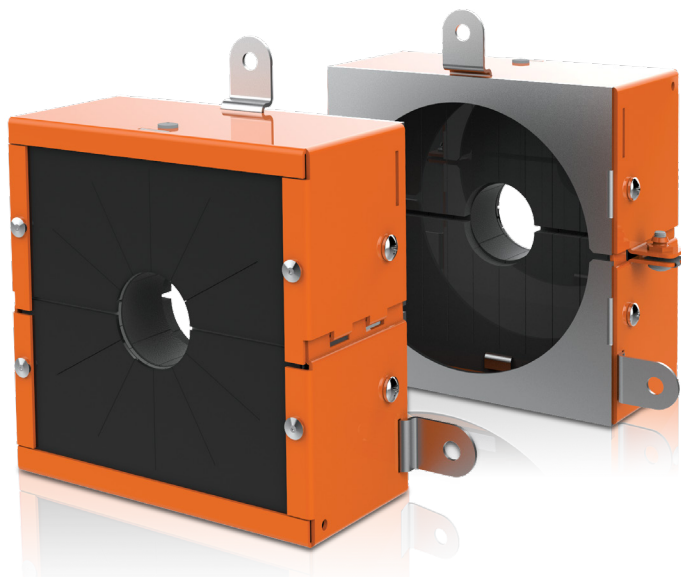
## Performance

EZ Path® Retrofit Device is UL Certified in accordance with ASTM E814 (UL1479) and CAN/ULC-S115. Systems are available for common floor and wall construction with ratings up to and including 2 Hr. L Ratings range from less than 1 to 10.7 CFM dependent upon cable types, sizes, and configurations. Refer to UL System for more details.



## Limitations

This product has been designed to be safe with plastics. It has been used extensively and successfully with various types of plastic pipes, tubes, and plastic cable insulations. Variations in these materials, however, make it impossible to guarantee compatibility. STI strongly recommends that the user consults with the pipe, tubing, or cable manufacturer in question regarding any known sensitivities or potential restrictions before applying this product.



## Features & Benefits

- Easy to install
- No additional firestopping required
- Sized for 2 in (2.197 in [56 mm]) to 2.375 in [60 mm] OD and 4 in (4.500 in [114 mm]) trade size EMT or rigid steel conduit sleeves or stubs
- 50% to 100% cable fill
- Works with extended or flush sleeves
- Bring overfilled sleeves back into code compliance

## PHYSICAL PROPERTIES

Shell Composition	0.059" (1.5 mm) Thick Galvanized Steel
Fire Ratings	1 or 2 Hours
Expansion Begins	250°F (121°C)
Allowable Cable Fill	50 to 100%
In Service Temperature	Less than 130°F (54°C)
Shelf Life	No Limit

# EZ Path<sup>®</sup> Retrofit Device (EZDR200 & EZDR400)



## Maintenance

No maintenance of the pathway is normally required.

## System Selection

To find your firestop system or create a submittal, visit <https://systems.stifirestop.com/> to use System Search & Submittal Builder. You may also visit the [UL Online Certifications Directory/UL Product iQ™](#) for complete listings. (Firestop Systems).

## Technical Service

Specified Technologies Inc. provides toll free technical support to assist in product selection and appropriate installation design. UL System designs suitable for submittal or specification purposes are available on request. A complete library of technical information is provided at the company's website [www.stifirestop.com](http://www.stifirestop.com) including Safety Data Sheets (SDS's).

## Precautionary Information

The use of this device is subject to local, regional and national codes. Consult the local Building Code Official or Authority Having Jurisdiction regarding any regional or local requirements that might influence the selection or use of the product.

## Availability

EZ Path<sup>®</sup> Products are available from Specified Technologies Inc. (STI) authorized distributors. For additional purchasing and technical information or for the names and locations of the nearest representative and/or distributor, regarding this and other Specified Technology products, please call 1-800-992-1180 or visit [www.stifirestop.com](http://www.stifirestop.com).

## Patents

US10143868B2; US2017354836A1

### ORDERING INFORMATION

Catalog Number	UPC Number	Description	(UOM) Qty.	Case Qty.	Weight (Each)
EZDR200	730573002001	Retrofit Device for 2" (2-3/16" or 2-3/8" O.D.) Sleeves, One Pair (2)	1	4	2.83 lbs (1.28 kg)
EZDR400	730573004005	Retrofit Device for 4" (4-1/2" O.D.) Sleeves, One Pair (2)	1	4	4.81 lbs (2.18 kg)
EZPR150	730573002018	1-1/2" Adapter Plate for EZDR200, One Pair (2)	1	1	0.75 lbs (0.34 kg)
EZPR300	730573004012	3" Adapter Plate for EZDR400, One Pair (2)	1	1	1.25 lbs (0.57 kg)

IMPORTANT NOTICE: ALL STATEMENTS, TECHNICAL INFORMATION, AND RECOMMENDATIONS CONTAINED HEREIN ARE BASED UPON TESTING BELIEVED TO BE RELIABLE, BUT THE ACCURACY AND COMPLETENESS THEREOF IS NOT GUARANTEED.

STI TYPICALLY WARRANTIES ITS PRODUCTS FOR ONE FULL YEAR. FOR COMPLETE DETAILS OF OUR STANDARD WARRANTY, PLEASE VISIT [WWW.STIFIRESTOP.COM/LEGAL/WARRANTY](http://WWW.STIFIRESTOP.COM/LEGAL/WARRANTY)

MADE IN THE USA - © 2021 SPECIFIED TECHNOLOGIES INC.

