

# LUMINARA®

BRINGING MORE MAGIC TO EVERY MOMENT

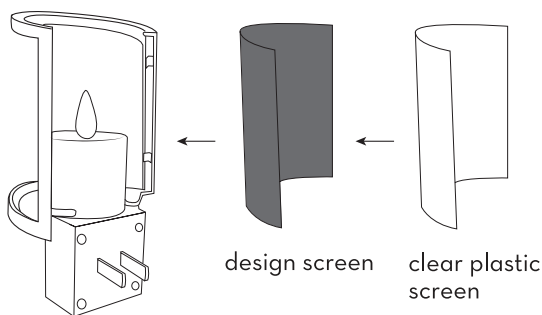
## NIGHTLIGHT SCREEN

### USING YOUR NIGHTLIGHT SCREENS

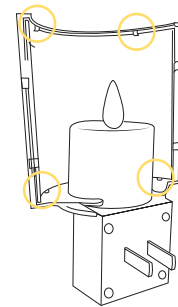
This product may come with 4 different screen designs, 2 of each, a total of 8 inserts (inserts may be purchased separately).

Gently slide the plastic cover out of the outer frame.

Stack the clear plastic screen over the design screen. Insert both of them into the outer frame. Make sure they are secured between the lower and upper dot (highlighted below in yellow.)



### FOR USE WITH LUMINARA SET OF TWO PLUG-IN NIGHTLIGHTS, Item #H217389



### LUMINARA WORLDWIDE, LLC 90-DAY LIMITED WARRANTY

THIS LIMITED WARRANTY GIVES YOU SPECIFIC LEGAL RIGHTS, AND YOU MAY ALSO HAVE OTHER RIGHTS WHICH VARY FROM STATE TO STATE. WE WARRANT THAT DURING THE WARRANTY PERIOD, THE PRODUCTS PURCHASED FROM US WILL BE FREE FROM DEFECTS IN MATERIALS AND WORKMANSHIP. WE LIMIT THE DURATION AND REMEDIES OF ALL IMPLIED WARRANTIES, INCLUDING WITHOUT LIMITATION THE WARRANTIES OF MERCHANTABILITY AND FITNESS FOR A PARTICULAR PURPOSE, TO THE DURATION OF THIS LIMITED WARRANTY. SOME STATES DO NOT ALLOW LIMITATIONS ON HOW LONG AN IMPLIED WARRANTY LASTS, SO THE ABOVE LIMITATION MAY NOT APPLY TO YOU. OUR RESPONSIBILITY FOR DEFECTIVE PRODUCTS IS LIMITED TO REPAIR, REPLACEMENT, OR REFUND AS SET FORTH IN THIS WARRANTY STATEMENT. NEITHER ANY PERFORMANCE OR OTHER CONDUCT, NOR ANY ORAL OR WRITTEN INFORMATION, STATEMENT, OR ADVICE PROVIDED BY US OR ANY OF OUR AGENTS OR EMPLOYEES WILL CREATE A WARRANTY, OR IN ANY WAY INCREASE THE SCOPE OR DURATION OF THIS LIMITED WARRANTY.

#### (a) Who May Use This Warranty?

This limited warranty extends only to the original purchaser of products from us. It does not extend to any subsequent or other owner or transferee of the product.

#### (b) What Does This Warranty Cover?

This limited warranty covers during the Warranty Period (as defined below) defects in materials and workmanship in products purchased from us.

#### (c) What Does This Warranty Not Cover?

This limited warranty does not cover any damages due to:

(i) transportation; (ii) storage; (iii) improper use; (iv) failure to follow the product instructions or to perform any preventive maintenance; (v) modifications; (vi) combination or use with any products, materials, processes, systems or other matter not provided or authorized in writing by Luminara Worldwide, LLC; (vii) unauthorized repair; (viii) normal wear and tear; (ix) external causes such as accidents, abuse, or other actions or events beyond our reasonable control.

This limited warranty does not cover any damages where the serial number or other identifying markings of the product in question have been removed or made illegible.

#### (d) What is the Period of Coverage?

This limited warranty starts on the date of your purchase and lasts for ninety (90) days (the "Warranty Period"). The Warranty Period is not extended if we repair or replace a warranted product. We may change the availability of this limited warranty at our discretion, but any changes will not be retroactive.

#### (e) What Are Your Remedies Under This Warranty?

With respect to any defective products during the Warranty Period, we will, in our sole discretion, either: (i) repair or replace such products (or the defective part) free of charge or (ii) refund the purchase price of such products. We will also pay for shipping and handling fees to return the repaired or replacement product to you if we elect to repair or replace the defective products.

#### (f) How Do You Obtain Warranty Service?

If you believe the Product may be defective, you may contact Luminara Worldwide, LLC at 1-877-905-8646 or by email to [customerservice@Luminara.com](mailto:customerservice@Luminara.com) during the Warranty Period to describe the alleged defect and to obtain an RMA number. No warranty service will be provided without an RMA number. After obtaining an RMA number, please return the item in its original package and follow any additional shipping instructions from us. Your return label will require you to return the item at your own expense. If you return a defective, damaged, or incorrect item, you'll be refunded the full postage cost, once your return is processed.

#### (g) Limitation of Liability

THE REMEDIES DESCRIBED ABOVE ARE YOUR SOLE AND EXCLUSIVE REMEDIES AND OUR ENTIRE OBLIGATION AND LIABILITY FOR ANY BREACH OF THIS LIMITED WARRANTY. OUR LIABILITY WILL UNDER NO CIRCUMSTANCES EXCEED THE ACTUAL AMOUNT PAID BY YOU FOR THE DEFECTIVE PRODUCT OR SERVICE THAT YOU HAVE PURCHASED FROM US, NOR WILL WE UNDER ANY CIRCUMSTANCES BE LIABLE FOR ANY LOSS OF USE, ANY DIMINUTION IN VALUE, COSTS OF REPLACEMENT GOODS OR SERVICES, OR ANY CONSEQUENTIAL, INCIDENTAL, SPECIAL OR PUNITIVE DAMAGES OR LOSSES, WHETHER DIRECT OR INDIRECT. SOME STATES DO NOT ALLOW THE EXCLUSION OR LIMITATION OF INCIDENTAL OR CONSEQUENTIAL DAMAGES, SO THE ABOVE LIMITATION OR EXCLUSION MAY NOT APPLY TO YOU.

Manufactured and distributed by L&L Candle Co., LLC. Luminara® and other related trademarks are trademarks of L&L Candle Co, LLC, registered or used in many jurisdictions worldwide.  
© 2022 Patents: [www.Luminara.com/Patents](http://www.Luminara.com/Patents)

We hope that you will be delighted with the beauty and functionality of your Luminara® Candle. As with any traditional candle, care is required to maintain your Luminara® Candle so that you can enjoy it for years to come. For optimal performance, please take the time to read the instructions.