

PLANTING TIME	Fall
BLOOM TIME	Mid Spring
LIGHT	Full Sun, Partial Shade
SPACING	4-5" apart, (9 per sq. ft.)
DEPTH	Plant 5-6" deep
MATURE HEIGHT	16-18" tall
BENEFITS	Beautiful Cut Flowers



Great gardens start with great soil!
Soil preparation is essential for successful gardening.

1

Flower bulbs prefer loose, well-drained soil rich in organic material. Start by removing weeds, rocks and debris from the planting area.

2

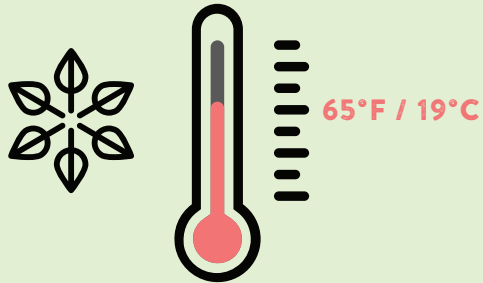
Loosen the soil to a depth of approximately 12 inches and mix in organic matter such as peat moss, compost, manure, or a combination.

3

Properly preparing the soil before planting will keep the bulbs from rotting and helps the roots to access oxygen and nutrients in the soil.

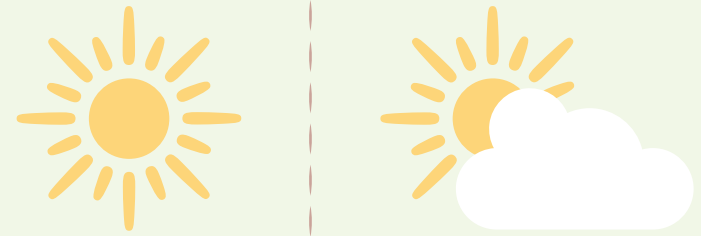
NOTE: It is important to store bulbs correctly until they are planted. Unpack the bulbs and store them in a cool, dry place with plenty of air circulation, where the temperature is between 40-70°F.

1



Plant tulip bulbs in the fall when the ground cools and before the first hard frost. Outside temperature should be about 65°F or cooler.

2



Select a well-drained location that receives full sun to partial shade.

3



Dig a hole 5-6" deep in loosened soil and place bulbs in the hole. Bulbs should be spaced about 4-5" apart. Plant them in the ground with their pointy ends up.

4



Cover with soil and water well so the soil above the bulb settles.