

DAT RateView for shippers



Know what a lane should cost – Right now, historically, and ahead

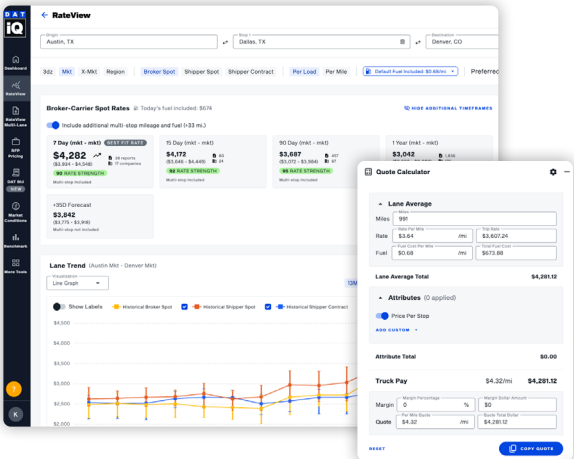
RateView is DAT's freight rate intelligence tool, built for shippers who need to know what a lane should cost right now, historically, and where it's likely headed. It pulls from more than \$1 trillion in real freight transaction data, so your team is always working from market reality, not assumptions.

WHAT IT DOES:

RateView shows you current market rates for any lane by origin, destination, and equipment type across multiple timespans, as short as one day and up to several years. You can run a single-lane lookup for a quick gut-check or batch multiple lanes at once when you need to move fast at scale. With hyper-granular benchmarks, you can compare your rates to the market to see how you stack up.



Rate types available → **Broker-carrier spot rates** **Shipper contract rates** **Shipper spot rates**



Each rate surfaces a low, average, and high range with trend data across your chosen timespan. A built-in quote calculator lets you factor in fuel, mileage, specialized attributes and accessorial charges to build out a full load cost on the spot.

For teams that need to look further ahead, RateView includes forecast rate capabilities with more than 95% accuracy across more than 200,000 daily predictions. You can plan procurement timing, anticipate routing guide stress, and build defensible budgets before market conditions shift, not after.

From quote validation to bid prep to routing guide decisions

Most transportation teams are pricing freight against incomplete information: carrier quotes, internal history, and instinct. RateView puts current market data in front of the people making rate decisions, so every quote validation, bid prep, and routing guide review starts from the same place: what the market actually says.

Validate carrier & broker quotes

Check quotes against current market rates before you commit.

Prep for bids & negotiations

Enter every negotiation with the same market context your carriers and brokers are working from.

Lane-level decisions

Support procurement and routing guide decisions with rate trends across your network to guide strategy.

Repair routing guide failures

Find capacity faster on problem lanes before a failure drives up spot spend.

Plan ahead

Use forecast rate data for procurement timing, annual budgeting, and future program planning.

Hyper-granular benchmarking

Compare your rates to the market at scale – by lane, equipment type, and date range.

Learn more about DAT rates and reach out to our team of experts to get started.