

chalk

porcelain tile, made in italy



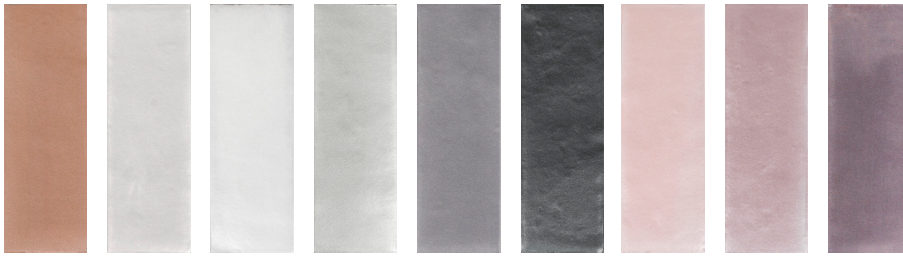
trinity tile



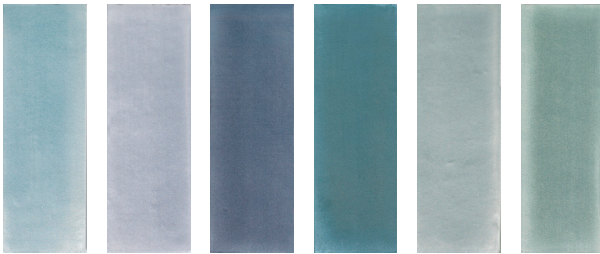
Reproducing traditional handmade tiles with slight dimensional differences between pieces, the wavy surface and slightly jagged edges enrich the beauty and imperfections characteristic of this collection. The small 2x6 size lends itself to different laying solutions for creating patterns and tone-on-tone or contrasting combinations.

chalk

porcelain tile, made in italy



cotto latte bianco grigio ferro nero rosa fucsia prugna



celeste glicine blu teal verde acqua

sizes



2"x6"

	2"x6"
cotto	●
latte	●
bianco	●
grigio	●
ferro	●
nero	●
rosa	●
fucsia	●
prugna	●
celeste	●
glicine	●
blue	●
teal	●
verde	●
acqua	●

● matte

technical specifications

nominal thickness	shade variation	water absorption	frost resistance	chemical resistance	crazing resistance	flexion resistance	breaking strength	dynamic coefficient of friction
N/A	N/A	10545-03	10545-12	10545-13	10545-11	10545-05	10545-04	A137.1
8.5mm	v3-v4	≤ 0.5%	resistant	resistant	resistant	≥ 35 N/mm ²	≥ 1300 N	≥ 0.42



more info

866-774-3390
info@trinitysurfaces.com
www.trinitysurfaces.com