

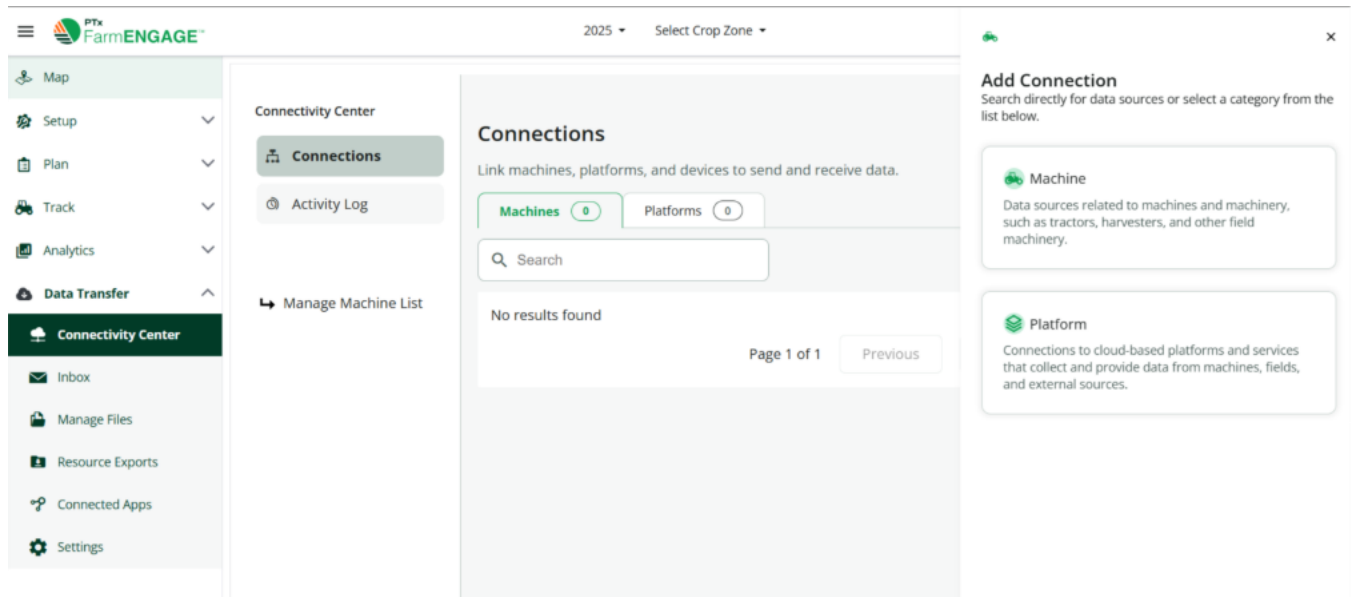
# AGCO Equipment FarmENGAGE Bundle Activation

## Overview

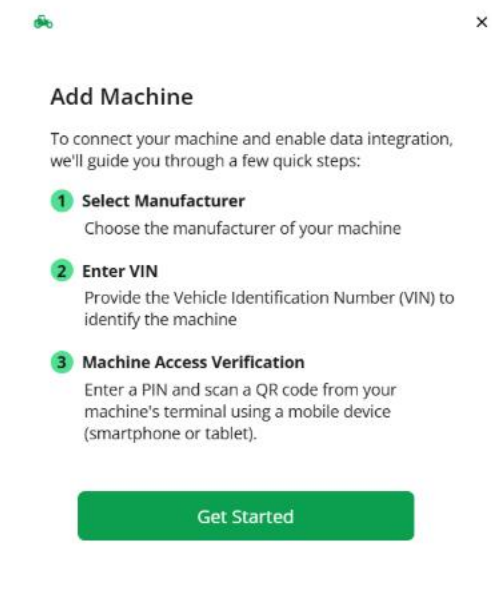
For regions that support a bundled FarmENGAGE offering with new equipment purchased from Fendt, Massey Ferguson and Valtra, users can unlock this added value by creating a FarmENGAGE account and activating their license in Connectivity Center. During the machine setup, users complete the machine data access verification process – if the machine qualifies, the bundled license will be automatically applied to the user's account.

# How to add a Machine to Connectivity Center and Receive the Bundled License

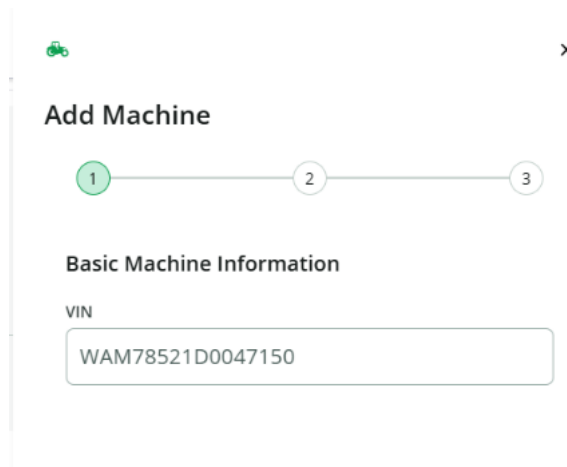
1. Connectivity Center is listed under the Data Transfer dropdown in FarmENGAGE. Go To <https://www.farmengage.com/> and go to the Data Transfer dropdown.
2. In Connectivity Center, you can see your connections to Machines and Platforms
  - a. Click the +Add button to add a connection to a machine



3. Select "Machine" and view the initial instructions. Click "Get Started" to start the process.



4. Enter your machine's VIN number.



The screenshot shows a mobile application window titled "Add Machine" with a close button (X) in the top right corner. A progress indicator at the top shows three steps: 1 (highlighted in green), 2, and 3. Below the progress indicator is the section "Basic Machine Information". Under this section, the label "VIN" is followed by a text input field containing the value "WAM78521D0047150".

5. View the machine's specifications.



The screenshot shows the same "Add Machine" form, but now the "Machine Specifications" section is visible. The progress indicator shows step 1 as completed (green circle) and step 2 as the current step (white circle). The "Machine Specifications" section contains several input fields with the following values: "Tractor" for Category, "Row-Crop Tractor" for Subcategory, "MF 7700 Series" for Series, "MF 7726 S" for Model, "Dyna-6" for Model Variant, and "2022" for Production Year.

6. Enter the PIN or scan the QR code from your machine.



7. If successful, your machine will be verified and will be added to the FarmENGAGE system.



8. If the machine was eligible for a bundled license, the user will now see the functionality in FarmENGAGE.

