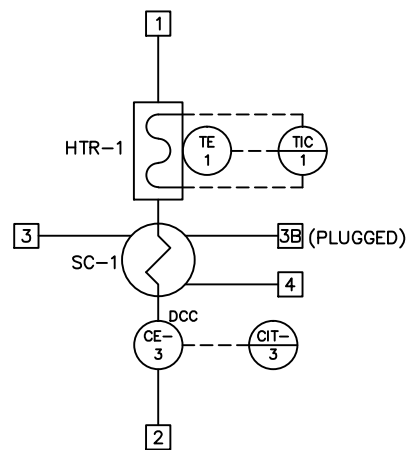


COMPONENT IDENTIFICATION	
I.D.	DESCRIPTION
CE-3	CONDUCTIVITY CELL, HACH 8315 SENSOR
CIT-3	DCC ANALYZER, HACH sc200
ENCL-1	NEMA ENCLOSURE
HTR-1	HEATER
SC-1	SAMPLE COOLER, TEB4221

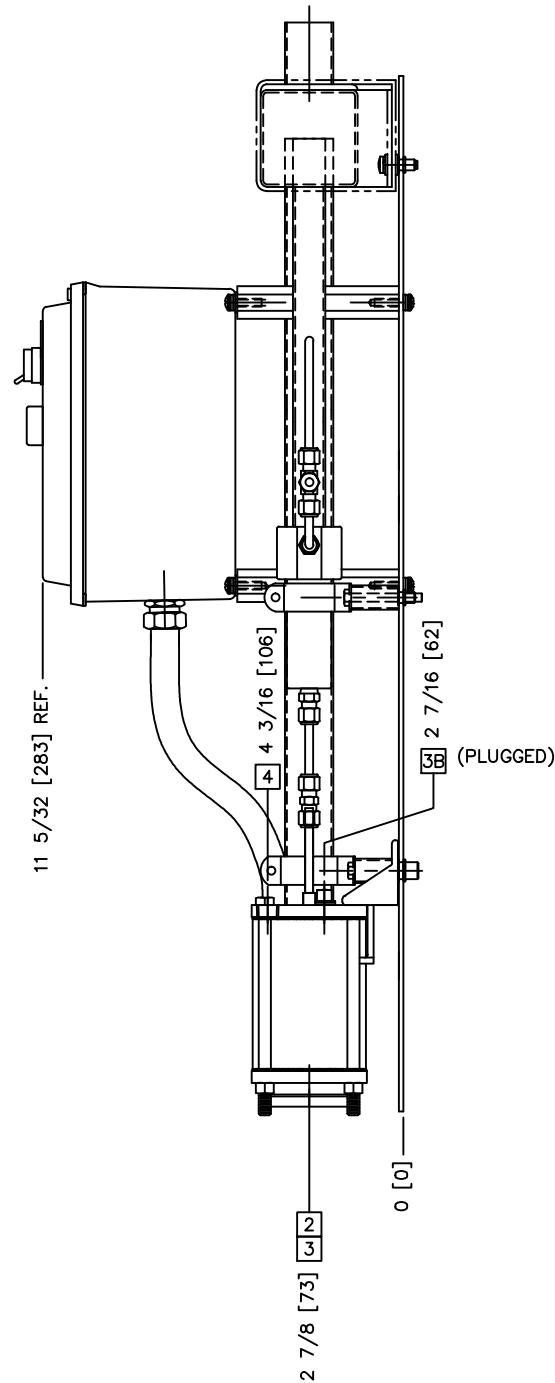
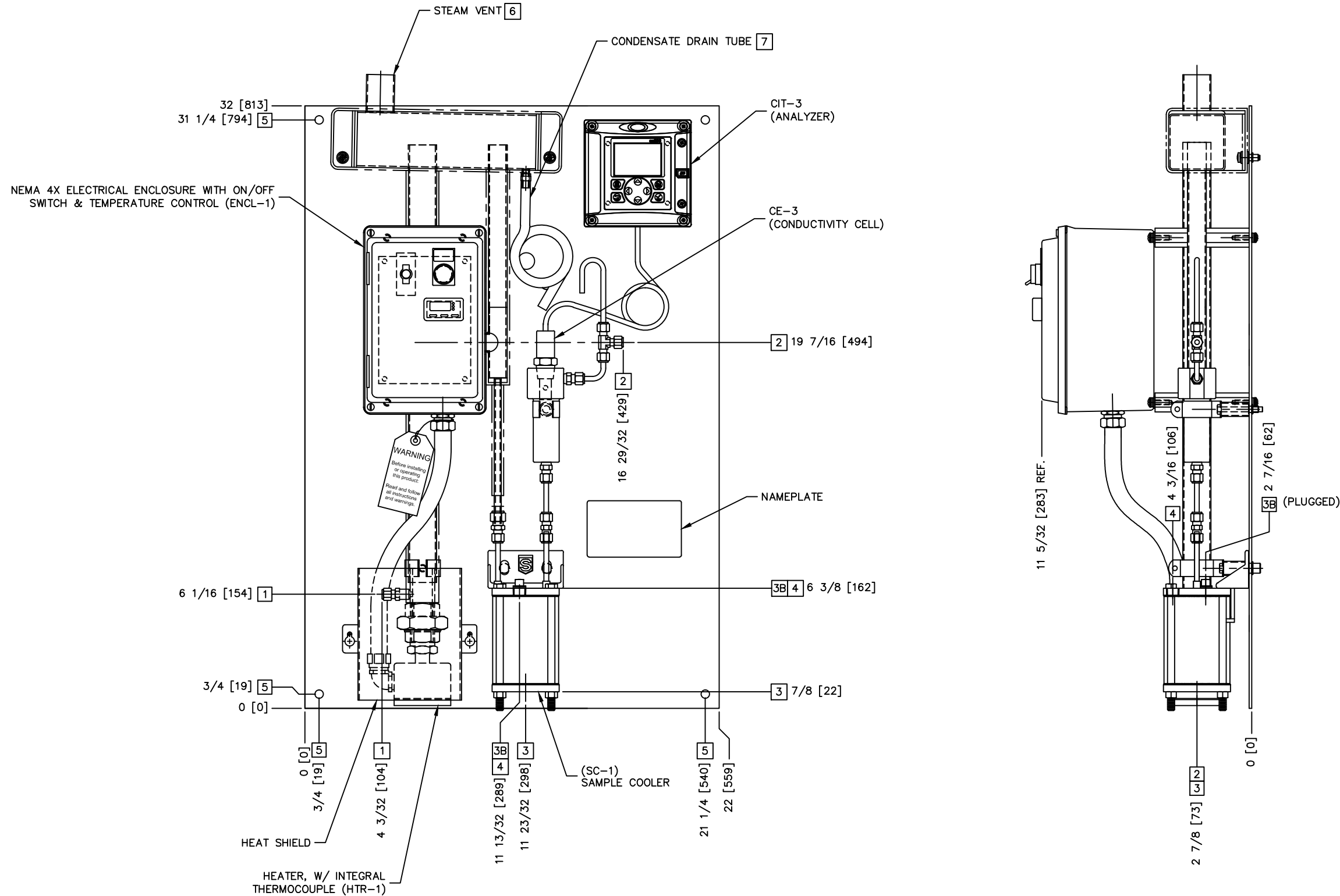
CONNECTION IDENTIFICATION		
I.D.	DESCRIPTION	SIZE
1	SAMPLE INLET	1/4 COMP. (SS)
2	SAMPLE OUTLET	1/4 COMP. (SS)
3	COOLING WATER INLET	3/8 FEMALE NPT (SS)
3B	COOLING WATER INLET (OPTIONAL)	3/8 FEMALE NPT (SS)
4	COOLING WATER OUTLET	3/8 FEMALE NPT (SS)
5	MOUNTING HOLES	7/16 DIA
6	STEAM VENT	1 1/2 TUBE (SS)
7	CONDENSATE DRAIN	3/8 TUBE

FLUID DESCRIPTION	
DESIGN/OPERATING PRESSURE	PSIG
DESIGN/OPERATING TEMPERATURE	F
DESIGN/OPERATING FLOW	cc/min

CONDITIONED SAMPLE INLET	
DESIGN/OPERATING TEMPERATURE	F
DESIGN/OPERATING FLOW	cc/min



DIMENSIONS IN [] ARE IN MILLIMETERS



SHEET 1 OF 1

REVISIONS

THIS DRAWING IS BEING SUBMITTED:

FOR REVIEW AND APPROVAL - ORDER WILL BE PROCESSED UPON RECEIPT OF APPROVED AND SIGNED DRAWINGS

CERTIFIED FOR PRODUCTION - FOR INFORMATION ONLY

CERTIFIED "AS BUILT"

WARNING

FOR YOUR SAFETY

IT IS SOLELY THE RESPONSIBILITY OF THE END USER THROUGH THEIR OWN ANALYSIS AND TESTING TO SELECT PRODUCTS AND MATERIALS SUITABLE FOR THEIR SPECIFIC APPLICATION REQUIREMENTS. ENGINEERS ARE RESPONSIBLE FOR THE PROPER SELECTION, INSTALLATION, AND MAINTENANCE OF THE PRODUCTS DESCRIBED HEREIN AND TO DISCLOSE ALL OTHER WARRANTIES, INCLUDING ANY IMPLIED WARRANTIES OF MERCHANTABILITY OR FITNESS FOR A PARTICULAR PURPOSE.

NOTE:

THIS DOCUMENT IS CONFIDENTIAL AND CONTAINS INFORMATION WHICH IS PROPRIETARY TO SEC. IT IS PROVIDED IN CONFIDENCE AND UPON THE CONDITION THAT NEITHER IT NOR THE INFORMATION CONTAINED IN IT WILL BE COPIED, DISCLOSED, OR USED IN WHOLE OR IN PART WITHOUT THE PRIOR WRITTEN CONSENT OF SEC.

REMOVE ALL BURRS AND SHARP EDGES UNLESS OTHERWISE NOTED

DO NOT SCALE DWG.		
ALL DIMENSIONS IN INCHES UNLESS OTHERWISE SPECIFIED		
TOLERANCES FOR ALL DIMENSIONS UNLESS OTHERWISE SPECIFIED		
	MACH. PARTS	STRUCT.
1/X	± 1/8	± 1/2
.X	± .01	± 0.3
.XX	± 0.005	± 0.06
.XXX	± 0.0005	± 0.030
ANG.	± 1/2°	± 1°

SENTRY www.sentry-equip.com

HACH DCCP-110x
DEGASSED CATION CONDUCTIVITY PANEL
GENERAL ARRANGEMENT

FILENAME	06212A01	DATE DRAWN	06/24/2016	DATE CHECKED		DATE APPROVED	
DWG. NO.	10-06212A	REVISION	0				