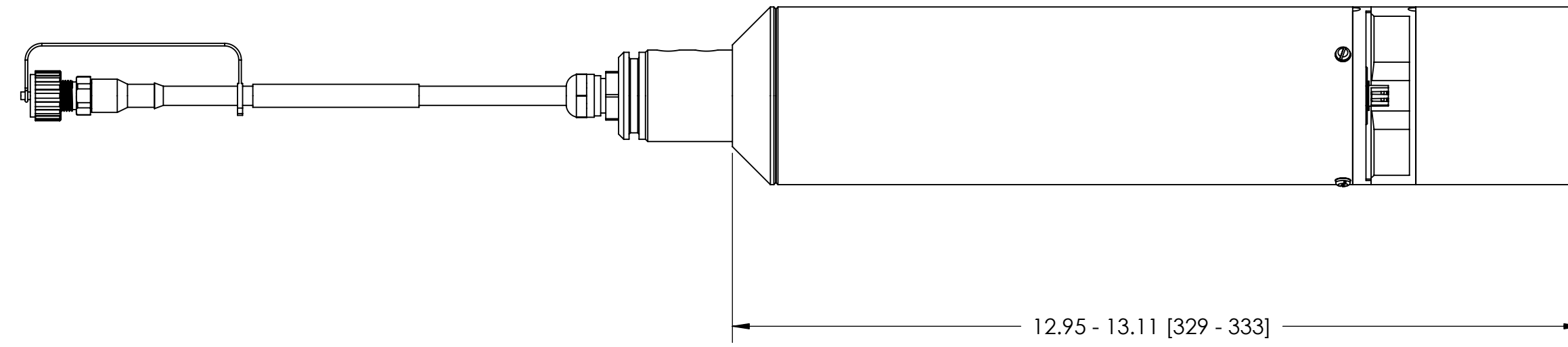
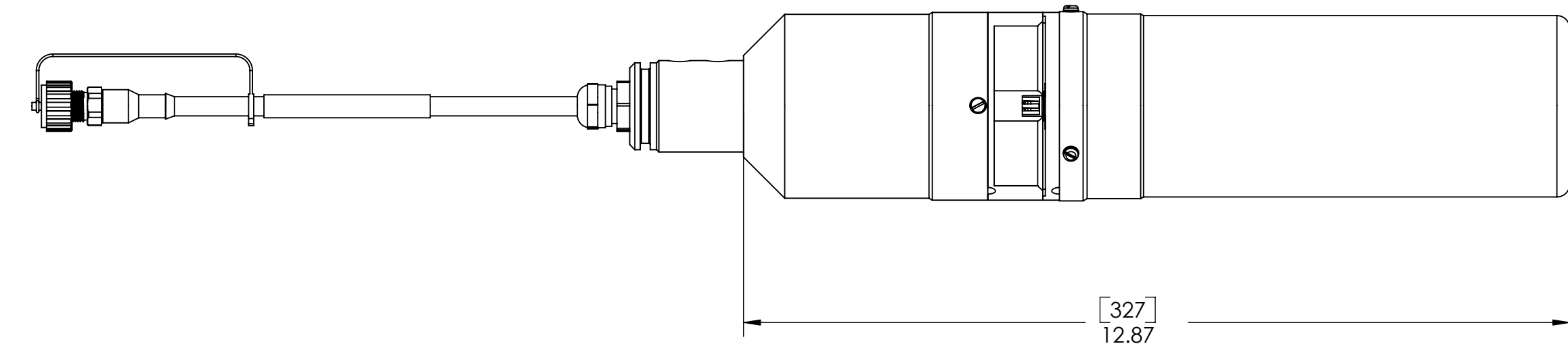
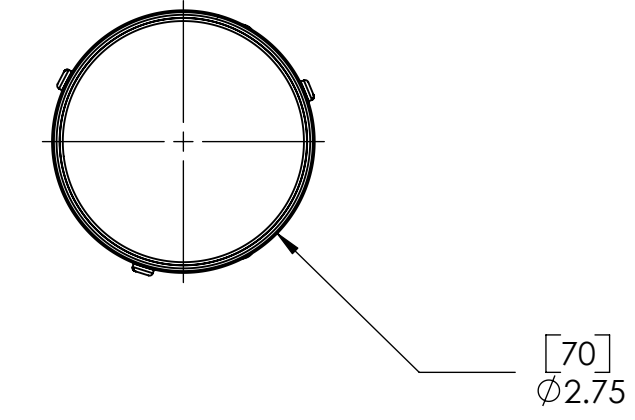


NOTES:
1. ALL DIMENSIONS ARE IN INCHES [MILLIMETERS].

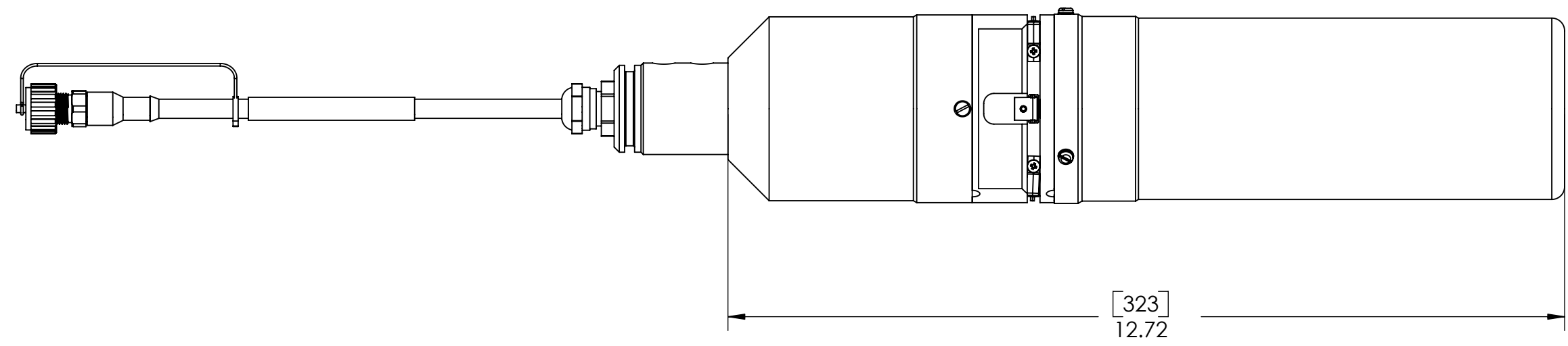
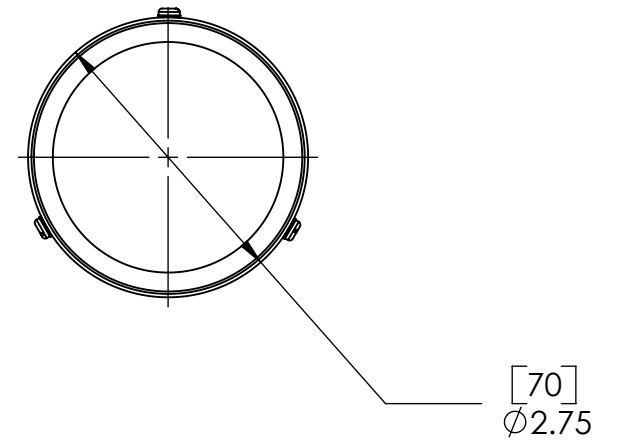
REVISION		
REV	DESCRIPTION	APPROVED
A	PRODUCTION RELEASE	



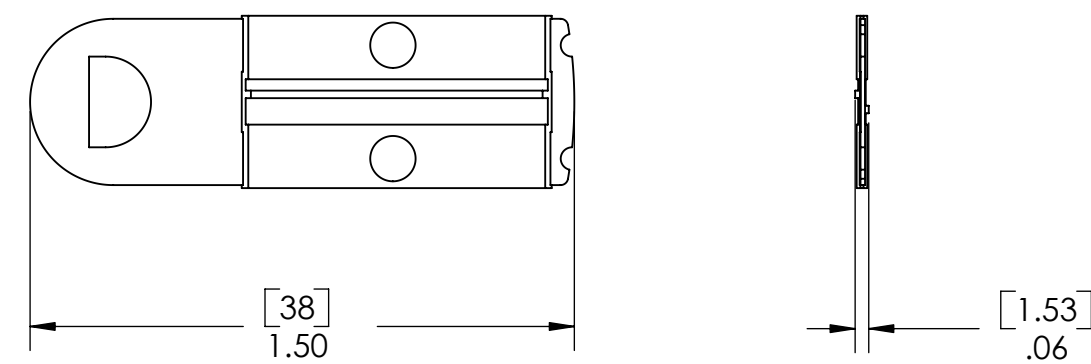
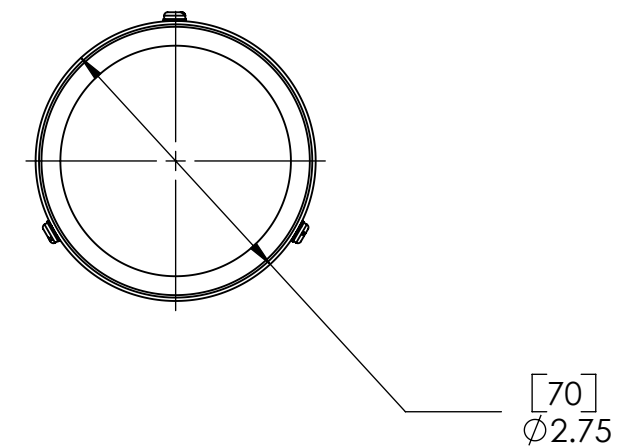
NITRATAX PLUS



NITRATAX ECO



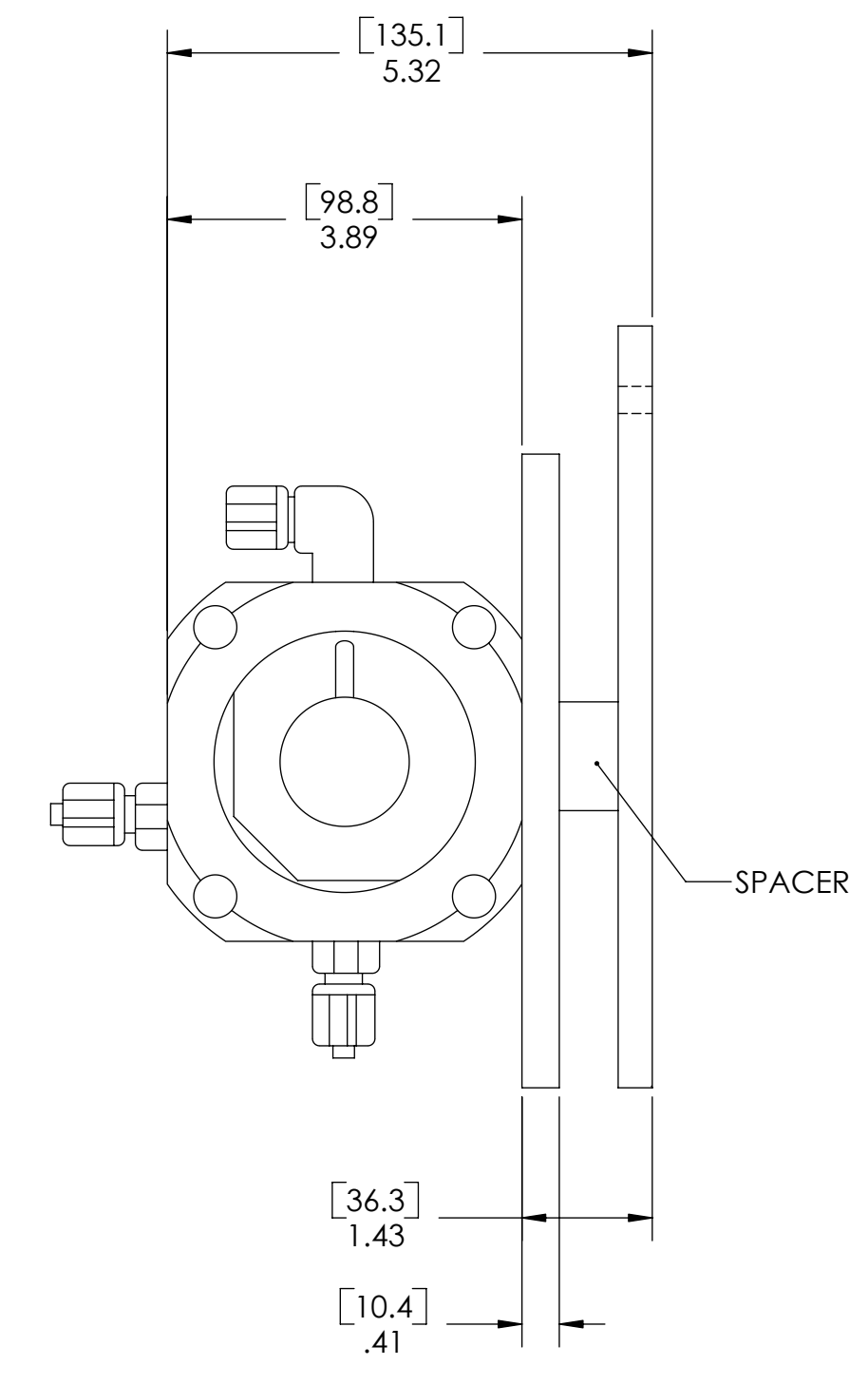
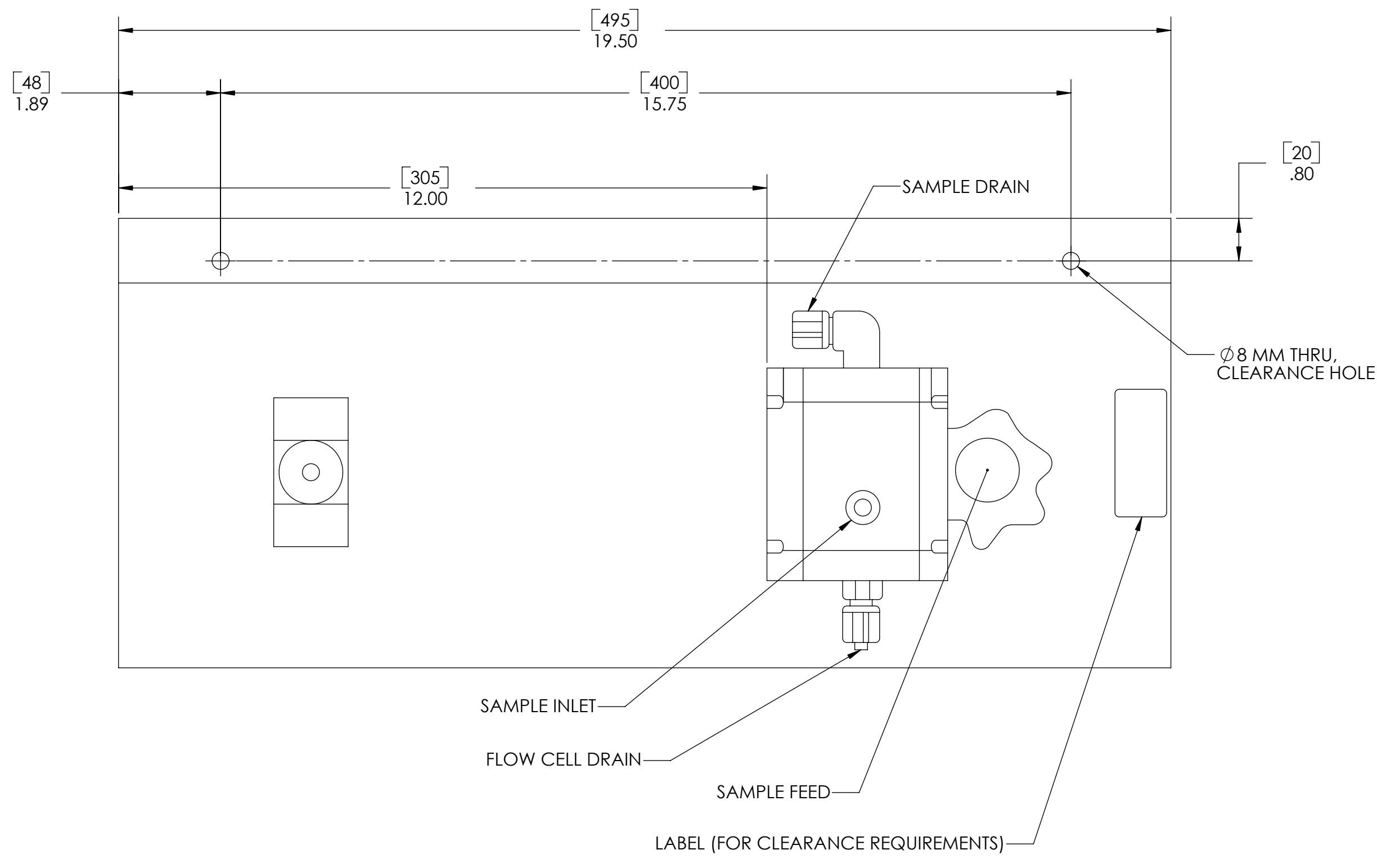
NITRATAX CLEAR



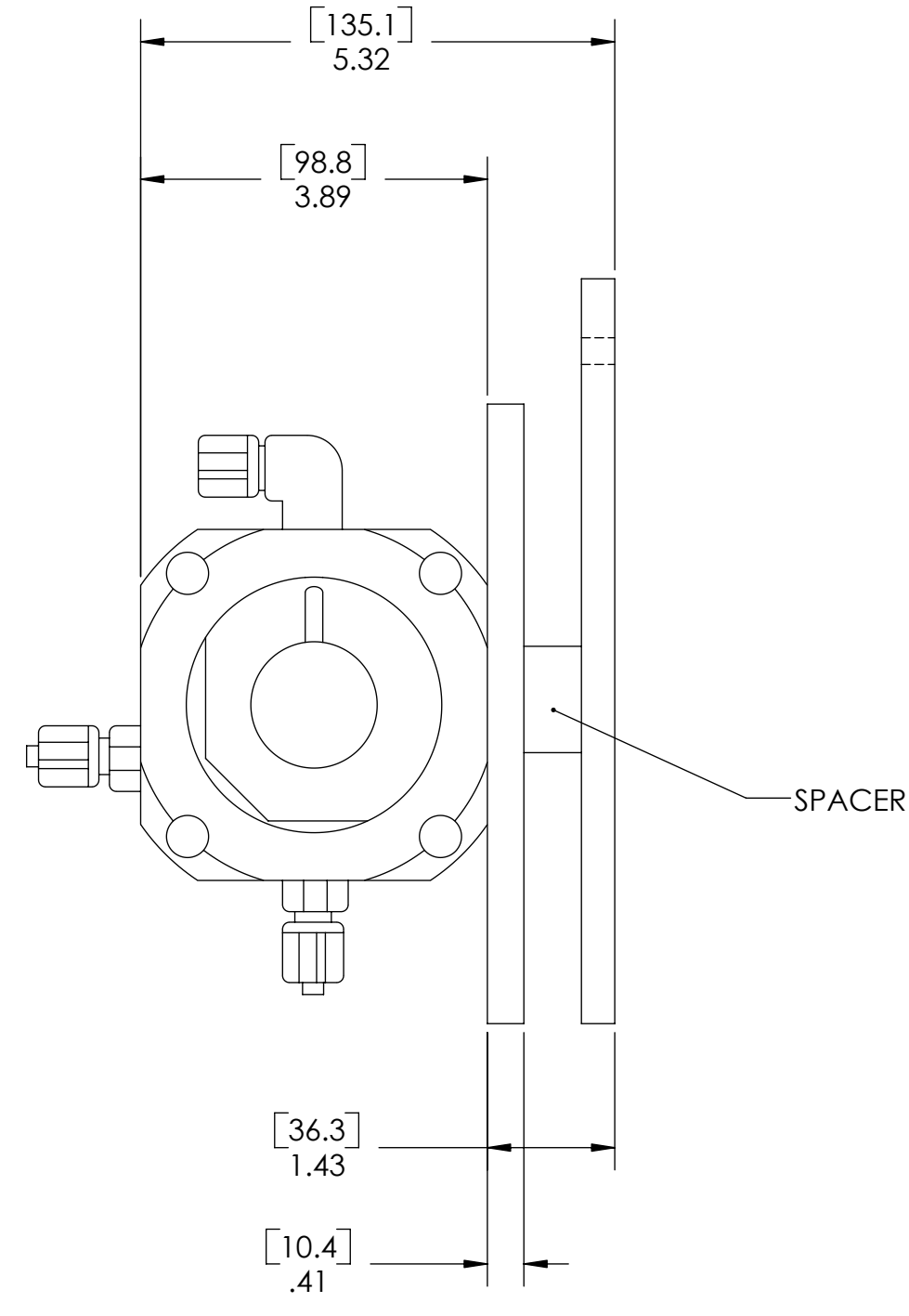
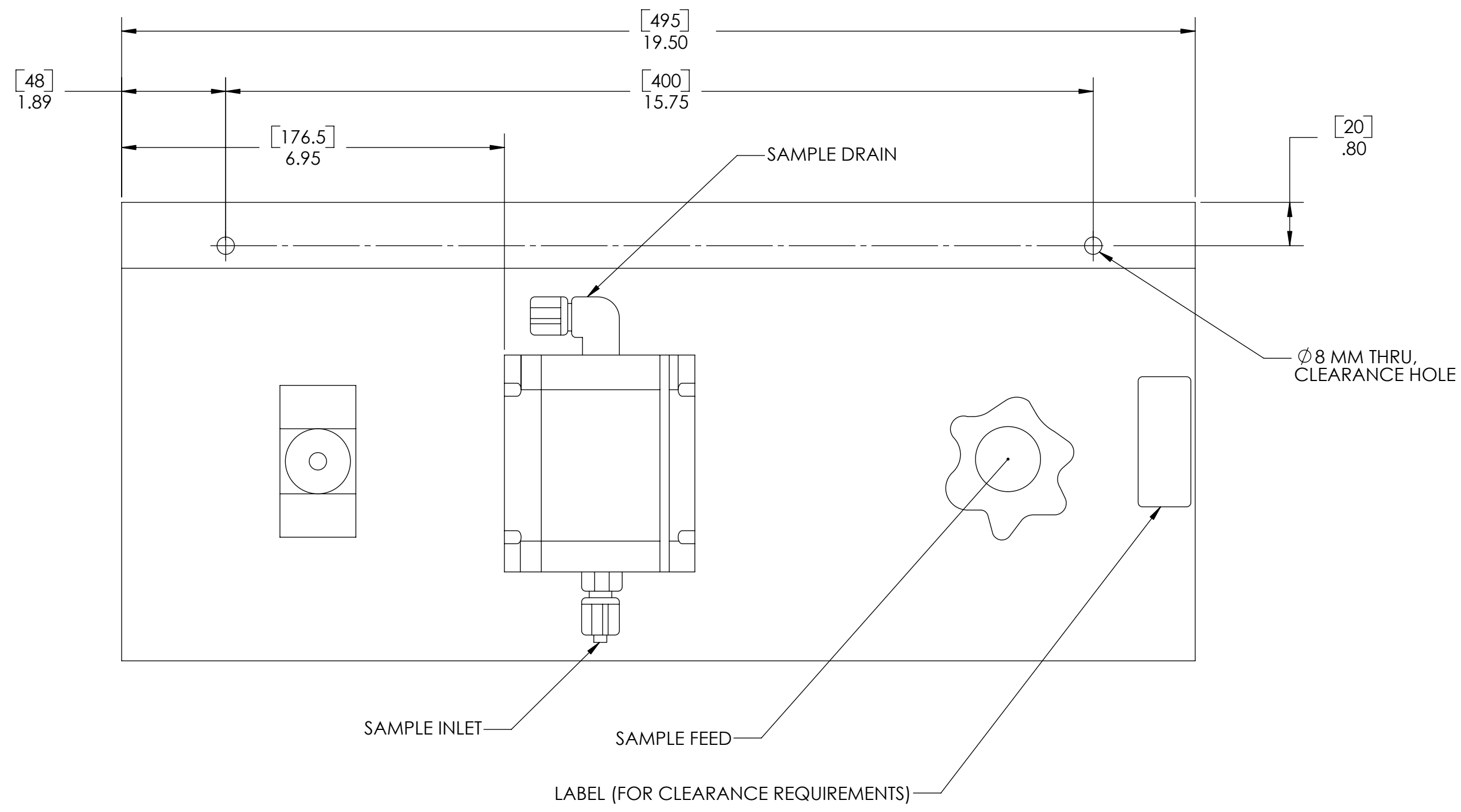
WIPER

NOTICE-HACH COMPANY CLAIMS PROPRIETARY RIGHTS IN THE INFORMATION DISCLOSED ON THIS DRAWING. IT IS ISSUED IN CONFIDENCE FOR ENGINEERING INFORMATION ONLY AND MAY NOT, IN WHOLE OR IN PART, BE USED TO MANUFACTURE ANYTHING, WHETHER OR NOT SHOWN HEREON, REPRODUCED OR DISCLOSED TO ANYONE WITHOUT DIRECT PERMISSION FROM HACH COMPANY.

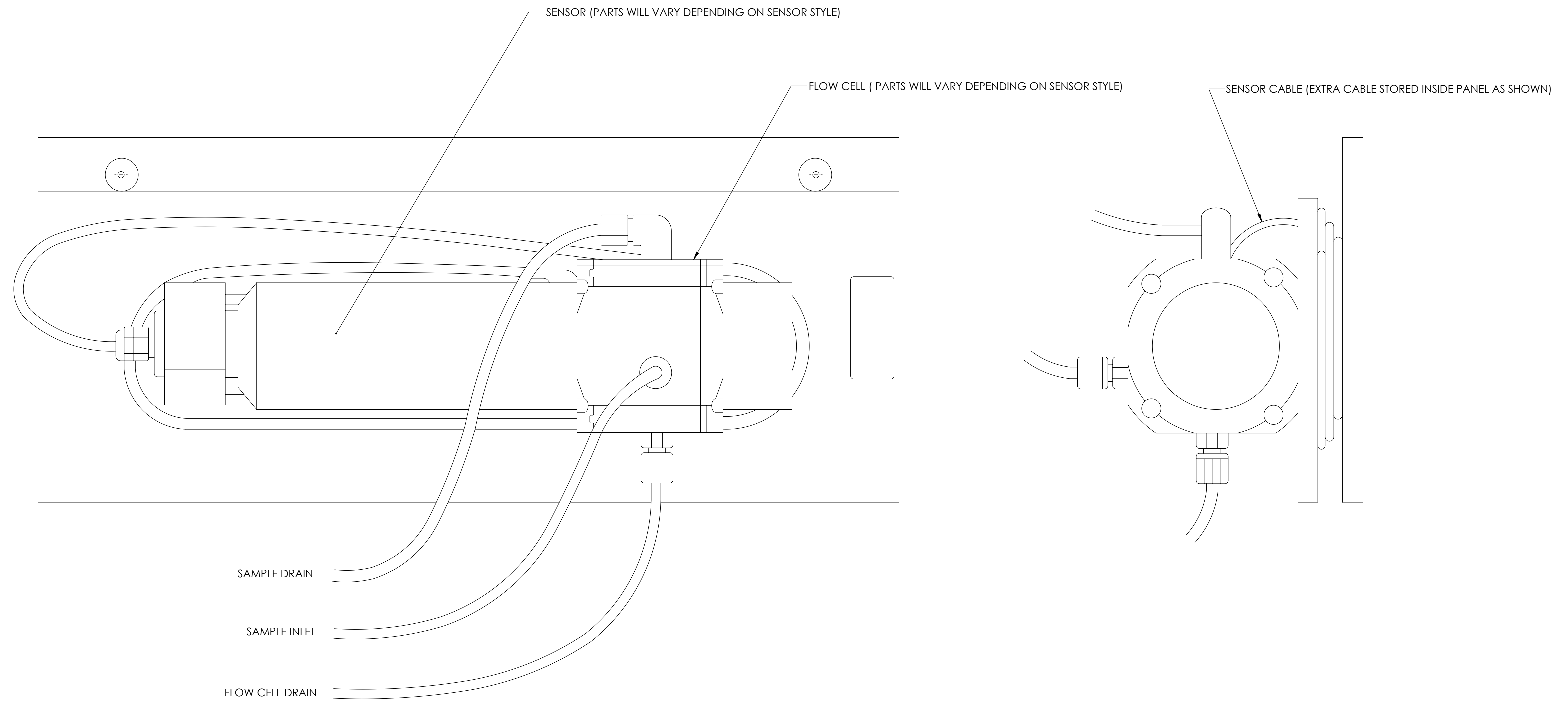
MATERIAL	UNLESS OTHERWISE SPECIFIED: DIMENSIONS ARE IN INCHES TOLERANCES: X = ± XX = ± XXX = ± ANGLES = ±	NAME TCS TCS	DATE 01/08/07 01/08/07	 HACH COMPANY 5600 LINDBERH DR LOVELAND, CO. 80539	
	INTERPRET GEOMETRIC TOLERANCING PER: ANSI Y14.5M 1994	THIRD ANGLE PROJECTION			
DO NOT SCALE THIS SHEET					TITLE: TRANSMITTAL, NITRATAX sc SIZE: D DWG. NO.: LXG41787 SCALE: 1:2 REV: A WEIGHT: SHEET 1 OF 4



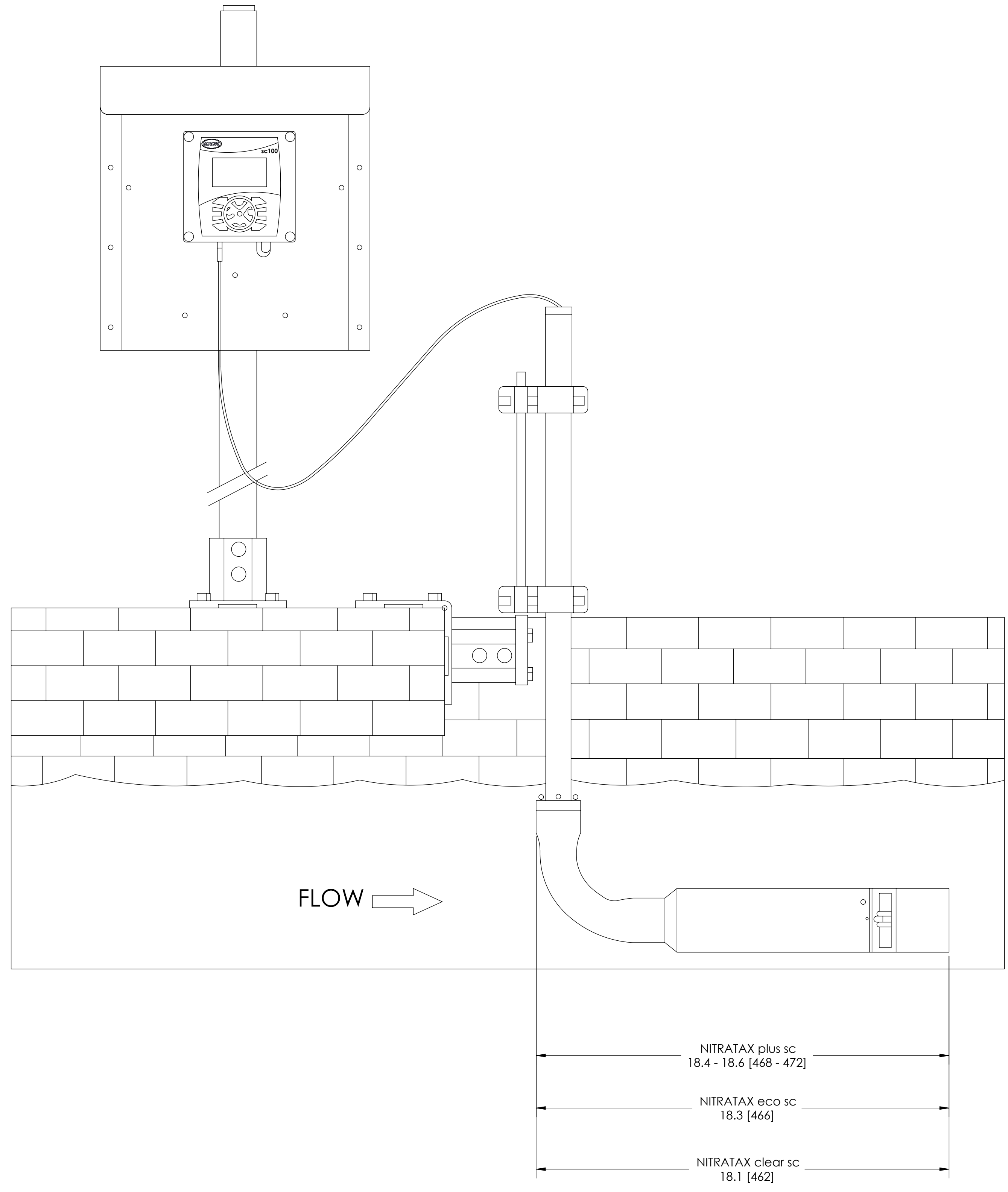
NITRATAX plus sc BYPASS ACCESSORIES



NITRATAX clear sc BYPASS ACCESSORIES



NITRATAX sc BYPASS ASSEMBLY



INSTALLATION GUIDELINES