

# LZX866, LZX867, LZX868, LZX869 Flow-Through Units

## General information

In no event will the manufacturer be liable for damages resulting from any improper use of product or failure to comply with the instructions in the manual. The manufacturer reserves the right to make changes in this manual and the products it describes at any time, without notice or obligation. Revised editions are found on the manufacturer's website.

## Safety information

The manufacturer is not responsible for any damages due to misapplication or misuse of this product including, without limitation, direct, incidental and consequential damages, and disclaims such damages to the full extent permitted under applicable law. The user is solely responsible to identify critical application risks and install appropriate mechanisms to protect processes during a possible equipment malfunction.

Please read this entire manual before unpacking, setting up or operating this equipment. Pay attention to all danger and caution statements. Failure to do so could result in serious injury to the operator or damage to the equipment.

Make sure that the protection provided by this equipment is not impaired. Do not use or install this equipment in any manner other than that specified in this manual.

### Use of hazard information

#### **⚠ DANGER**

Indicates a potentially or imminently hazardous situation which, if not avoided, will result in death or serious injury.

#### **⚠ WARNING**

Indicates a potentially or imminently hazardous situation which, if not avoided, could result in death or serious injury.

#### **⚠ CAUTION**

Indicates a potentially hazardous situation that may result in minor or moderate injury.

#### **NOTICE**

Indicates a situation which, if not avoided, may cause damage to the instrument. Information that requires special emphasis.

### Precautionary labels

Read all labels and tags attached to the instrument. Personal injury or damage to the instrument could occur if not observed. A symbol on the instrument is referenced in the manual with a precautionary statement.



Electrical equipment marked with this symbol may not be disposed of in European domestic or public disposal systems. Return old or end-of-life equipment to the manufacturer for disposal at no charge to the user.

## Product overview

This document gives the installation steps for the flow-through units in [Table 1](#).

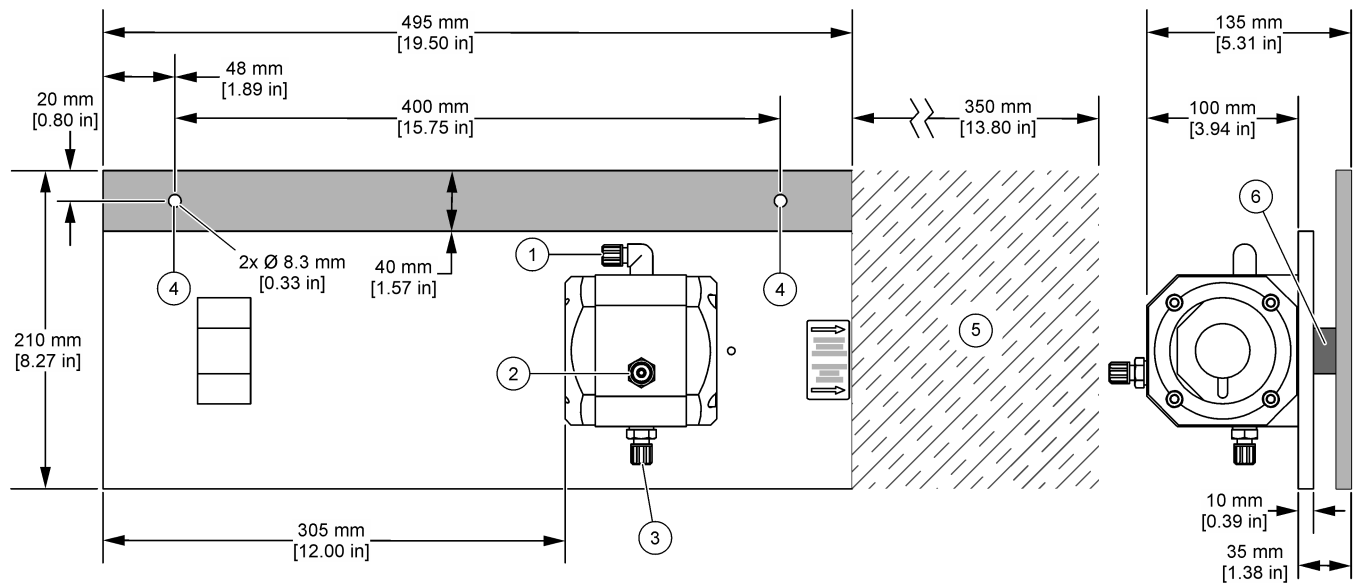
**Table 1 Flow-through units**

Sensor	LZX869	LZX867	LZX866	LZX868
NT3100sc 1 mm or 2 mm	X	—	—	—
Nitratax plus sc 1 mm	—	—	—	—
UVAS plus sc 1 mm	—	—	—	—
Nitratax plus sc 2 mm	X	—	—	—
UVAS plus sc 2 mm	X	—	—	—
NT3100sc 5 mm	—	X	—	—
Nitratax plus sc 5 mm	—	X	—	—
UVAS plus sc 5 mm	—	X	—	—
Nitratax clear sc 5 mm	—	—	X	—
UVAS plus sc 50 mm	—	—	—	X

**Note:** The Nitratax plus sc 1 mm (LXV417.99.1000x) and UVAS plus sc 1 mm (LXV418.99.1000x) are not compatible with any of the flow-through units.

Refer to [Figure 1](#) through [Figure 3](#) for the dimensions, sample fittings and mounting holes of the flow-through units.

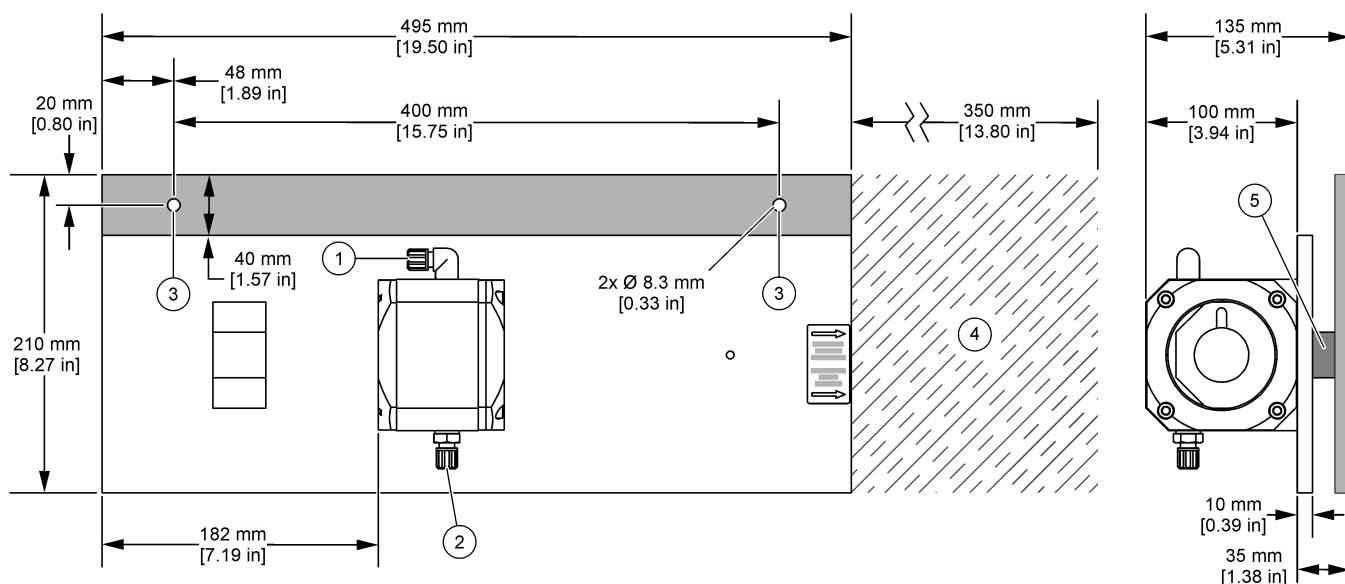
**Figure 1 LZX867 and LZX869**



1 Sample outlet <sup>1</sup>	4 Mounting holes (2x)
2 Sample inlet <sup>1</sup>	5 Clearance area to the right of the flow-through unit
3 Flow cell drain <sup>1</sup>	6 Spacer (2x) (wrap sensor cable)

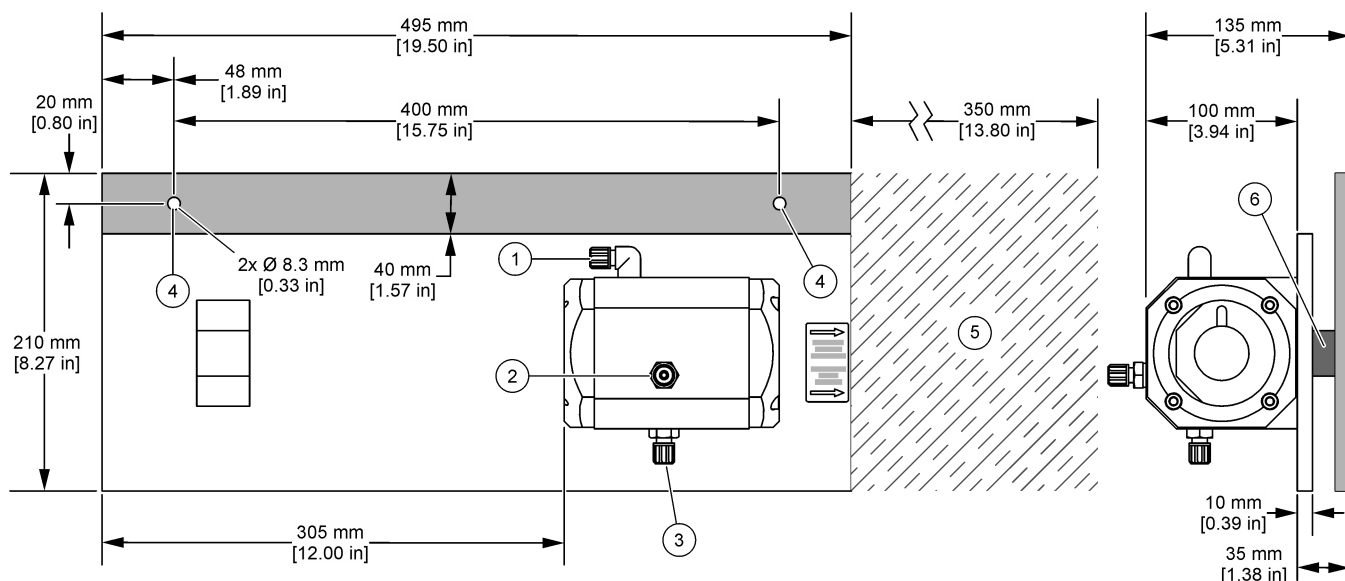
<sup>1</sup> G1/4" thread fitting for 4 mm ID/6 mm OD tubing

**Figure 2 LZX866**



1 Sample outlet <sup>1</sup>	4 Clearance area to the right of the flow-through unit
2 Sample inlet <sup>1</sup>	5 Spacer (2x) (wrap sensor cable)
3 Mounting holes (2x)	

**Figure 3 LZX868**



1 Sample outlet <sup>1</sup>	4 Mounting holes (2x)
2 Sample inlet <sup>1</sup>	5 Clearance area to the right of the flow-through unit
3 Flow cell drain <sup>1</sup>	6 Spacer (2x) (wrap sensor cable)

## Product components

Make sure that all components have been received. If any items are missing or damaged, contact the manufacturer or a sales representative immediately.

- Flow-through unit
- Allen key, 5 mm

- 
- Setscrew
  - Orientation screw
  - Tubing, 4 mm ID, 6 mm OD, 2 m (6.5 ft) (2x)
  - Only supplied with the LZX868 unit: Replacement wiper holder for UVAS plus sc sensor

## Installation

### DANGER



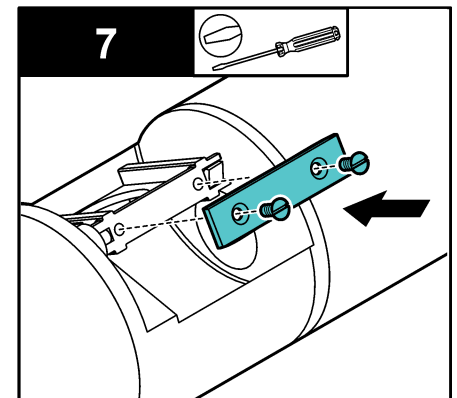
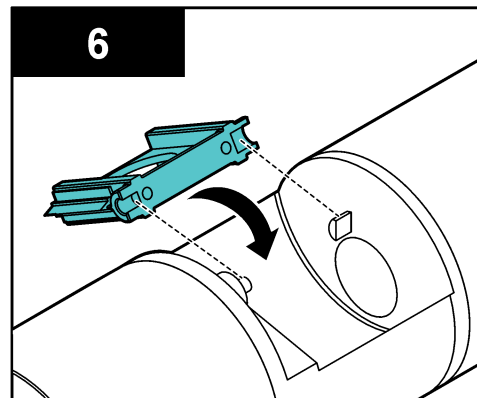
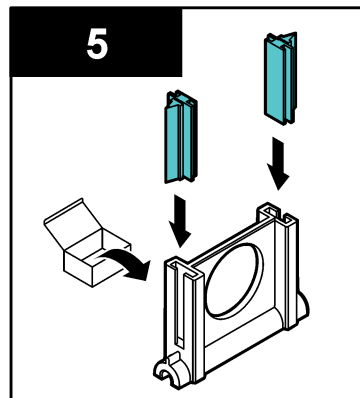
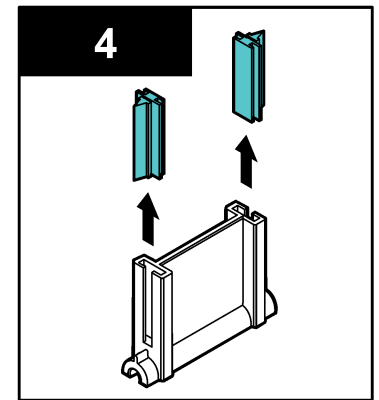
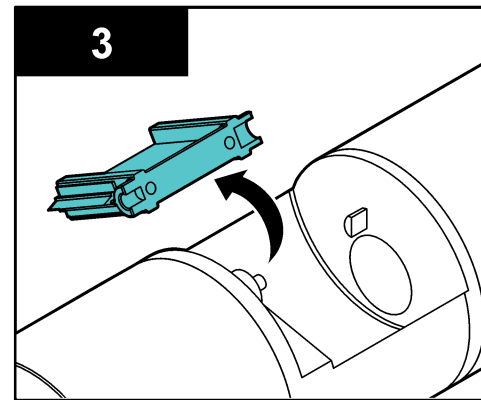
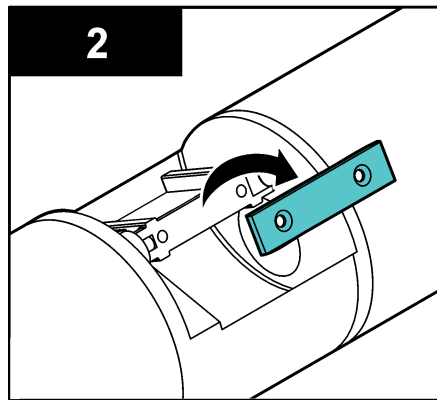
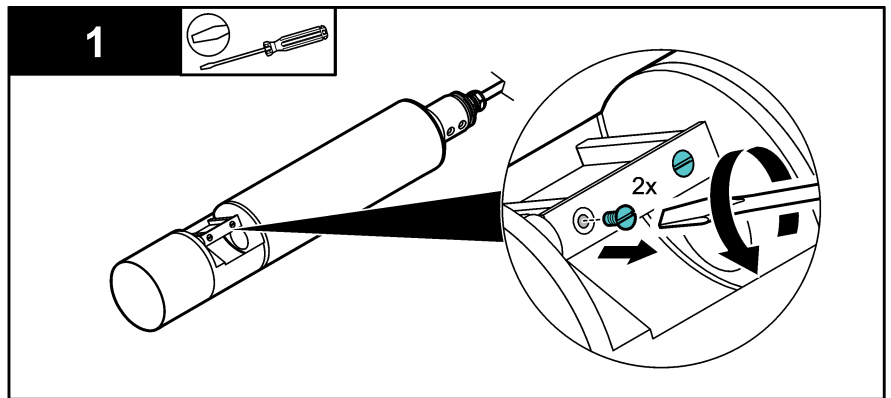
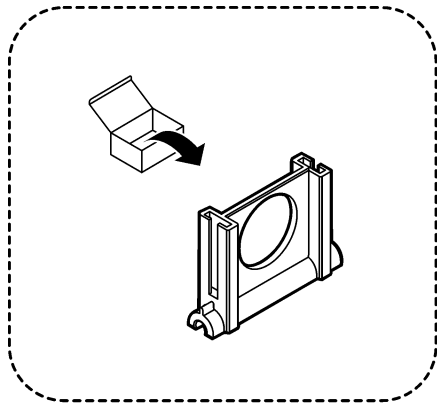
Multiple hazards. Only qualified personnel must conduct the tasks described in this section of the document.

### Wall mount the flow-through unit

Attach the flow-through unit to a wall with the two mounting holes. Refer to the applicable figure in [Product overview](#) on page 2 for the unit dimensions and minimum clearance to the right of the unit. The hardware to mount the flow-through unit is supplied by the user.

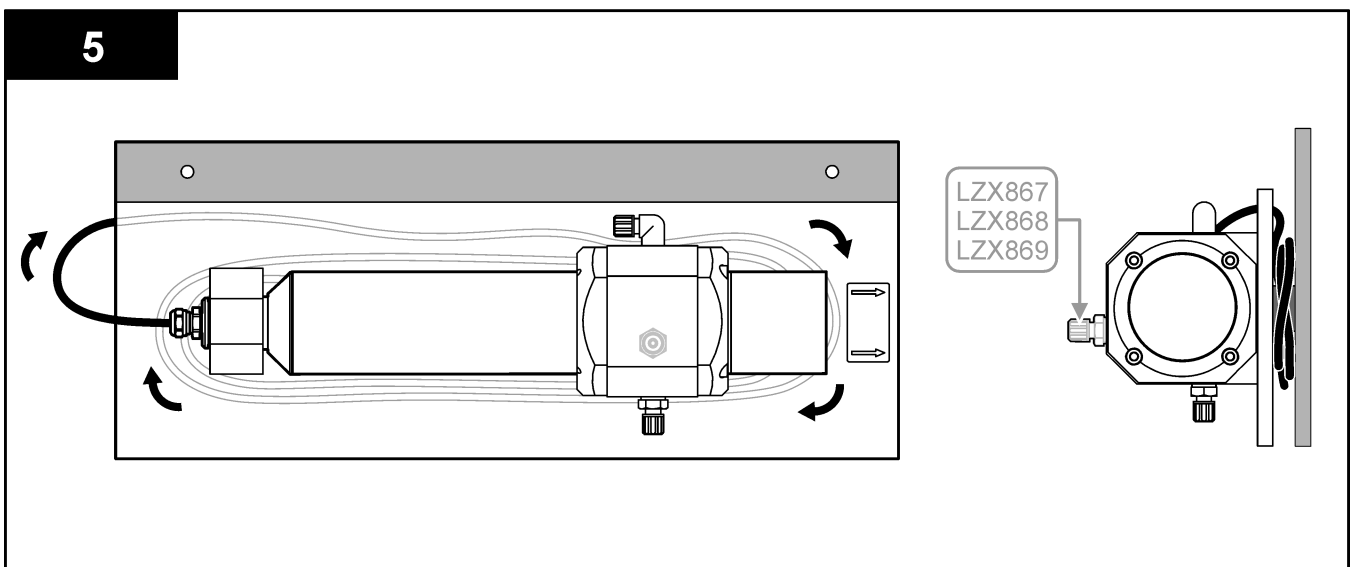
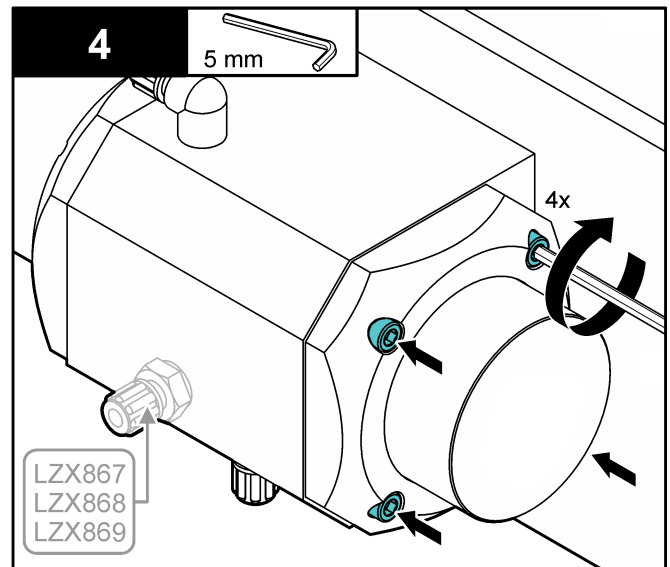
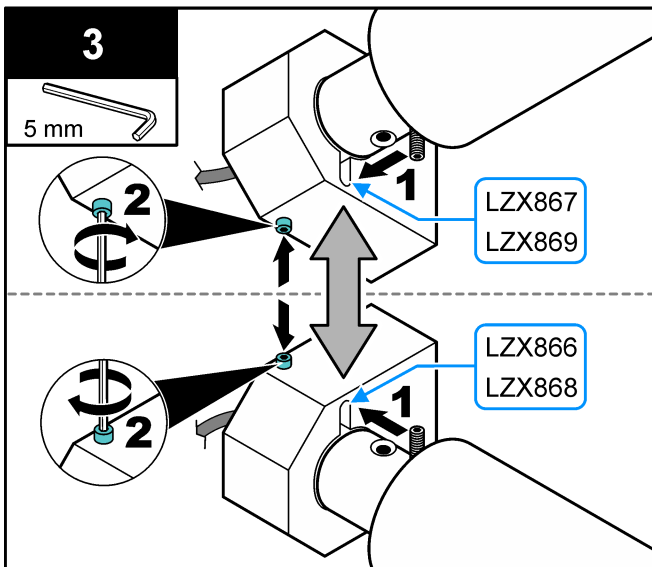
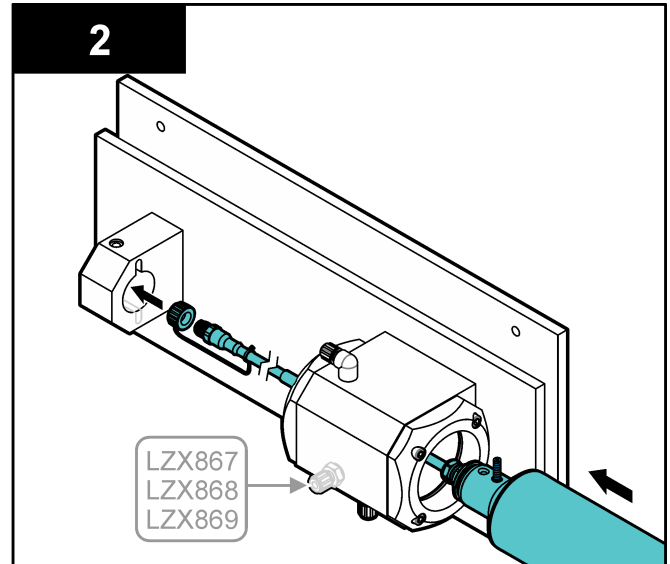
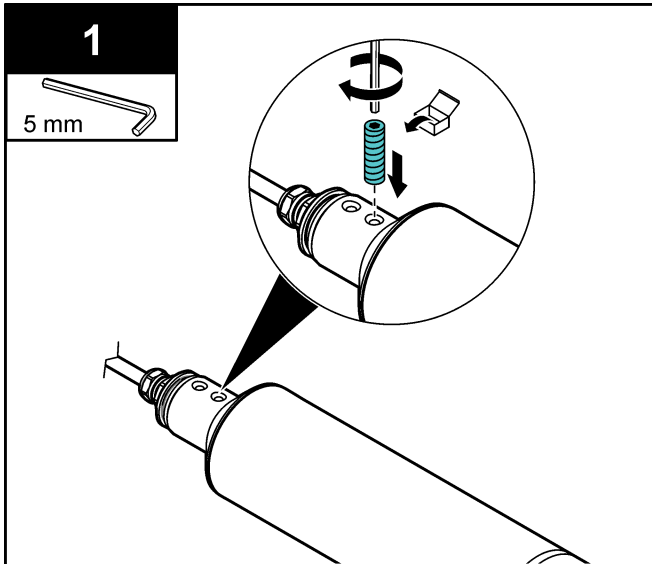
## Replace the wiper holder (UVAS plus sc 50 mm with LZX868 unit only)

Before the UVAS plus sc 50 mm sensor is installed in the LZX868 unit, replace the wiper holder with the wiper holder that is supplied with the LZX868 unit. Refer to the illustrated steps that follow.



## Install the sensor

Refer to the illustrated steps that follow to install the sensor in the flow-through unit.



## Plumb the unit

1. Use the supplied tubing to plumb the sample inlet and sample outlet. Refer to the applicable figure in [Product overview](#) on page 2 for the location of the sample inlet and sample outlet.

For the LZX867 and LZX869 flow-through units, insert the sample inlet tube approximately 50 mm (2 inches) through the sample inlet fitting. Make sure to remove the tube from the sample inlet fitting before the sensor is removed from the unit or damage to the sensor can occur.

- **Sample flow rate**—0.5 to 10 L/hour (0.13 to 2.64 gallons/hour) maximum

2. For the LZX867, LZX868 and LZX869 flow-through units, use the supplied tubing to plumb the flow cell drain.

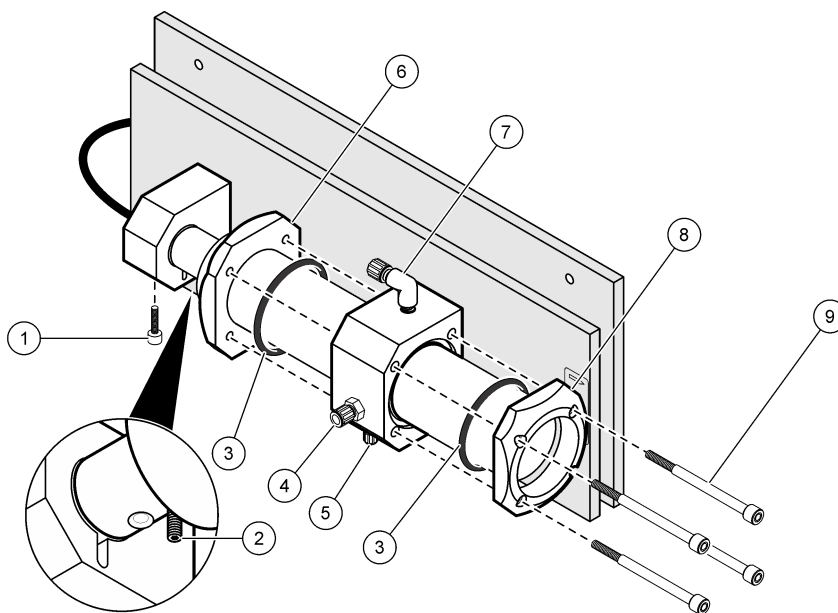
## Replacement parts

### ⚠ WARNING



Personal injury hazard. Use of non-approved parts may cause personal injury, damage to the instrument or equipment malfunction. The replacement parts in this section are approved by the manufacturer.

Figure 4 LZX867, LZX868, LZX869

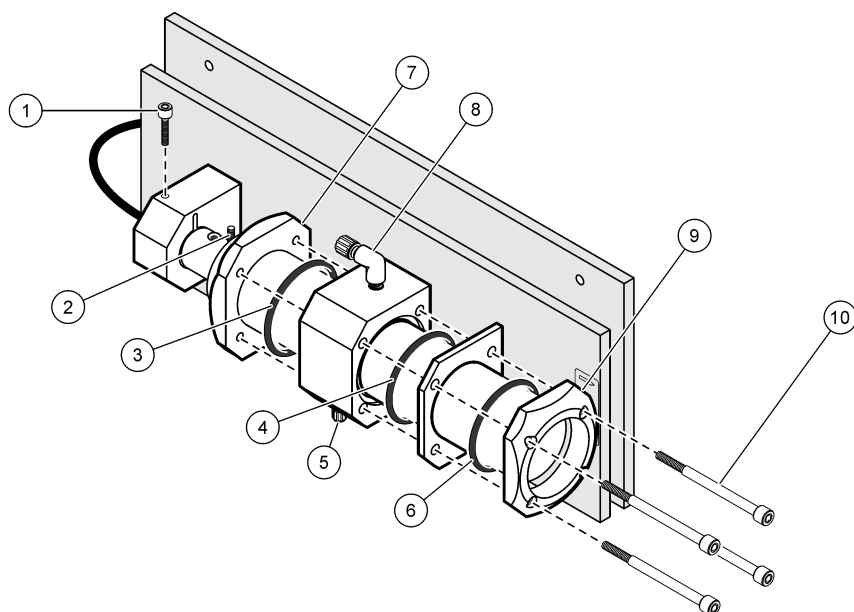


Item	Description	Quantity	Part number
1, 2	Panel screws kit, includes: <ul style="list-style-type: none"><li>• Item 1—Setscrew</li><li>• Item 2—Orientation screw</li></ul>	each	LZX875
3	O-rings <sup>2</sup> , 70 x 5 mm (2.76 x 0.2 inch)	2	LZX428
4	Sample inlet fitting	each	LZY371
5	Flow cell drain fitting	each	LZY371
6	Pressure ring with threads	each	LZY229
7	Sample outlet fitting	each	LZP538
8	Pressure ring without threads	each	LZY228
9	Cap head screws, M6 x 90 mm	4	LZX923

<sup>2</sup> Remove the sensor and sensor cable from the flow-through unit before the O-rings are replaced.

Item	Description	Quantity	Part number
—	Tubing, clear, 4 mm ID, 6 mm OD, 2 m (6.5 ft)	2	LZX407
—	Replacement wiper holder for the UVAS plus sc 50 mm sensor, does not include: wiper blades, screws or plate	each	LZX879

**Figure 5 LZXR866**



Item	Description	Quantity	Part number
1, 2	Panel screw kit, includes: <ul style="list-style-type: none"> <li>Item 1—Setscrew</li> <li>Item 2—Orientation screw</li> </ul>	each	LZX875
3, 4, 6	O-rings <sup>2</sup> , includes: <ul style="list-style-type: none"> <li>Item 3—O-ring 73 x 5 mm (2.87 x 0.2 inch)</li> <li>Item 4—O-ring 85 x 4 mm (3.35 x 0.16 inch)</li> <li>Item 6—O-ring 72 x 5 mm (2.83 x 0.2 inch)</li> </ul>	3	LZX572
5	Sample inlet fitting	each	LZY371
7	Pressure ring with threads	each	LZY329
8	Sample outlet fitting	each	LZP538
9	Pressure ring without threads	each	LZY379
10	Cap head screws, M6 x 75 mm	4	—
—	Tubing, clear, 4 mm ID, 6 mm OD, 2 m (6.5 ft)	2	LZX407

**HACH COMPANY World Headquarters**  
P.O. Box 389, Loveland, CO 80539-0389 U.S.A.  
Tel. (970) 669-3050  
(800) 227-4224 (U.S.A. only)  
Fax (970) 669-2932  
orders@hach.com  
www.hach.com

**HACH LANGE GMBH**  
Willstätterstraße 11  
D-40549 Düsseldorf, Germany  
Tel. +49 (0) 2 11 52 88-320  
Fax +49 (0) 2 11 52 88-210  
info-de@hach.com  
www.de.hach.com

**HACH LANGE Sàrl**  
6, route de Compois  
1222 Vévenaz  
SWITZERLAND  
Tel. +41 22 594 6400  
Fax +41 22 594 6499

