

Hach CityGuard™

Your distribution system... at your fingertips.



Hach CityGuard allows you to quickly view the status of your monitoring stations at sites throughout your distribution system and source water system at a glance.

DW

WW

E

Overview

CityGuard is a security network portal, command center and real-time water monitoring system that optimizes the use of utility dollars while maximizing water quality protection.

The addition of CityGuard provides water utilities with a bi-directional monitoring and control system that integrates the sensor data from water quality monitoring points strategically located throughout a community's distribution system. This allows utility personnel to simultaneously view and respond to critical real-time water quality data from any Internet browser at any location.

The capabilities of CityGuard provide water utilities with a "virtual command center" for critical distribution monitoring and control. CityGuard allows for an effective response to minimize the adverse impacts that could result from an event, whether it's a security-related contamination, or other water quality changes in the system such as quality degradation due to water age, a ruptured water main, cross connection, or an accidental over-feed.

CityGuard works in concert with proprietary Event Monitors coupled with Water Distribution Monitoring Panels (WDMP sc), and Source Water Monitoring Panels (SWMP) located throughout the utility system. These systems, which can be upgraded to the Hach GuardianBlue®, employ an array of analytical instrumentation combined with advanced interpretive algorithms to provide accurate, data-rich detection/classification networks.

CityGuard allows utilities to:

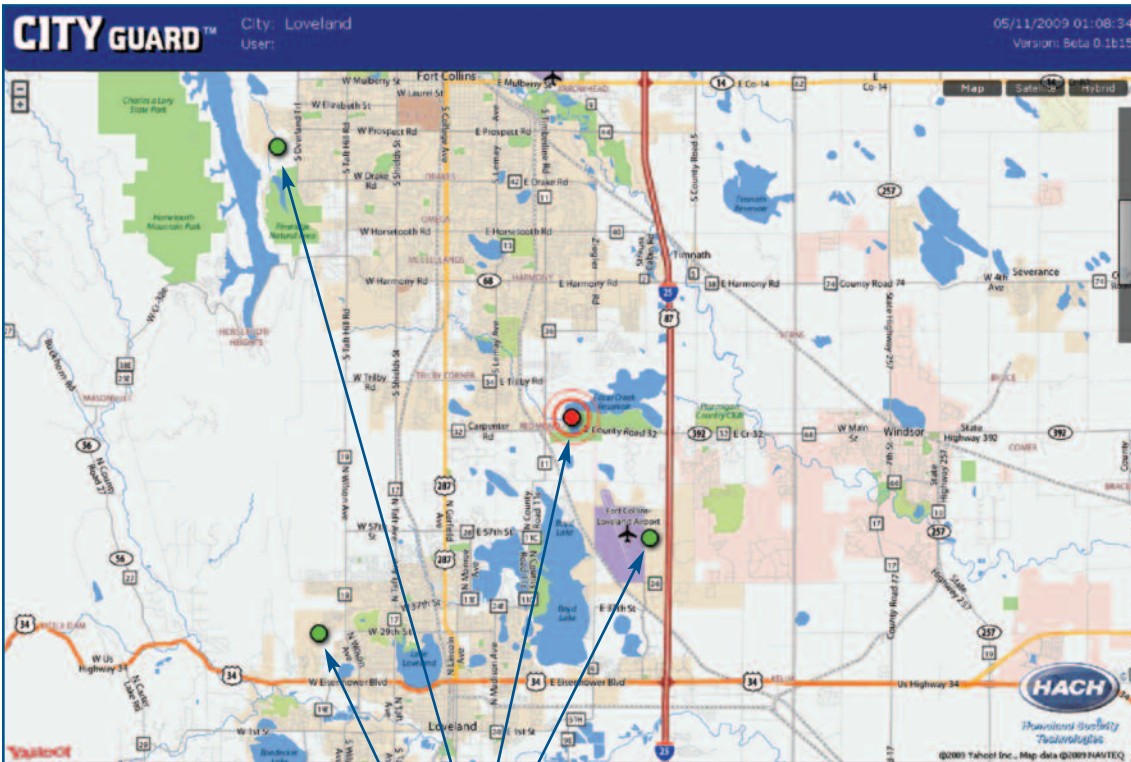
- View the status of multiple distribution monitoring points at a glance.
- Have bi-directional control of multiple Event Monitors from any location with Internet access.
- Save time and costs associated with travel to remote monitoring sites.
- Drill down, view, and analyze water quality data from multiple distribution monitoring points from a single location.
- Maximize the value of water distribution monitoring and drinking water security programs.
- Quickly access Event Monitor(s) in the event of a water quality event to minimize response time.

DW = drinking water WW = wastewater municipal PW = pure water / power
IW = industrial water E = environmental C = collections FB = food and beverage

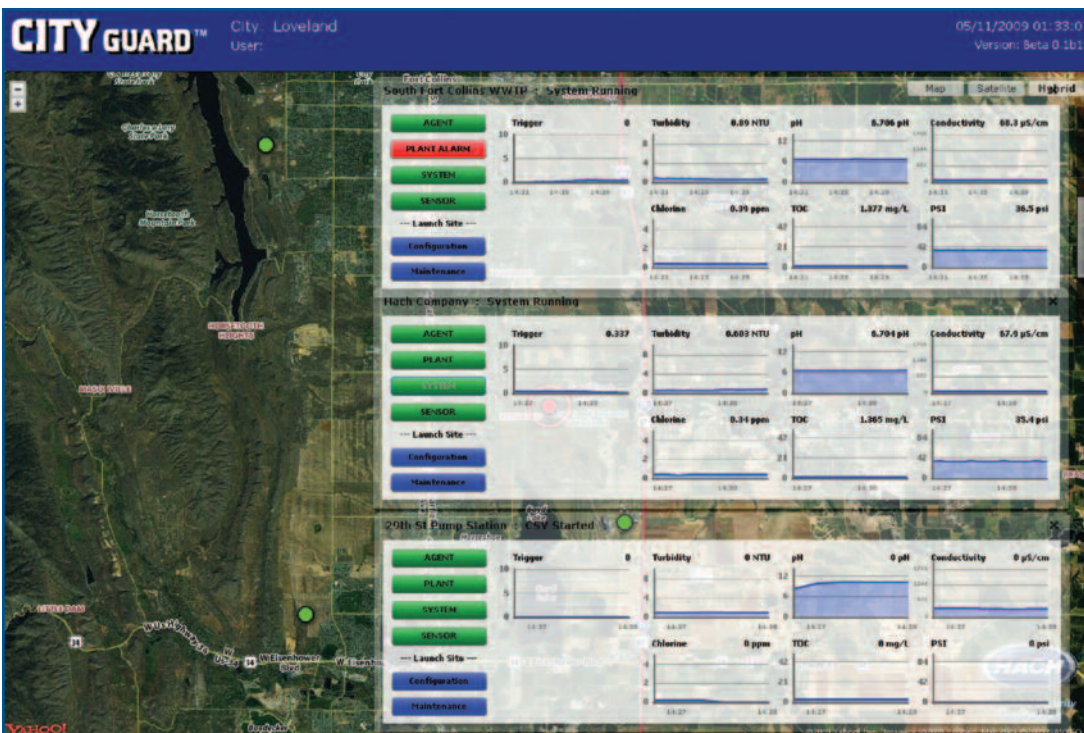


Homeland Security
Technologies®

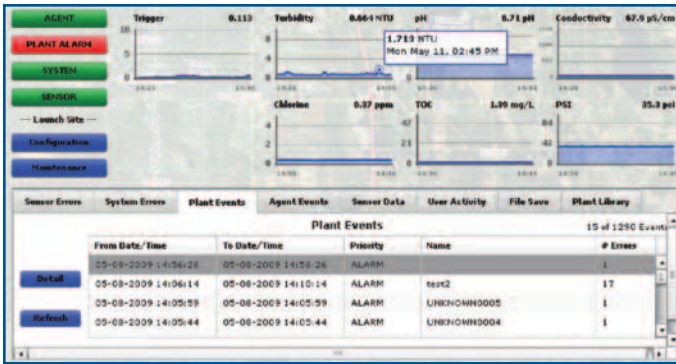
CityGuard Interface Screens



In this example, the icons above represent monitoring sites equipped with Event Monitors. The RED icon designates an Event Monitor in an alarm state. This could be caused by an agent alarm, unknown or priority plant alarm, sensor malfunction or system malfunction. The GREEN icon means the Event Monitor is in a normal state. A RED "X" indicates a communication failure between CityGuard and the monitoring site. A BLUE icon indicates a normal plant event is occurring.

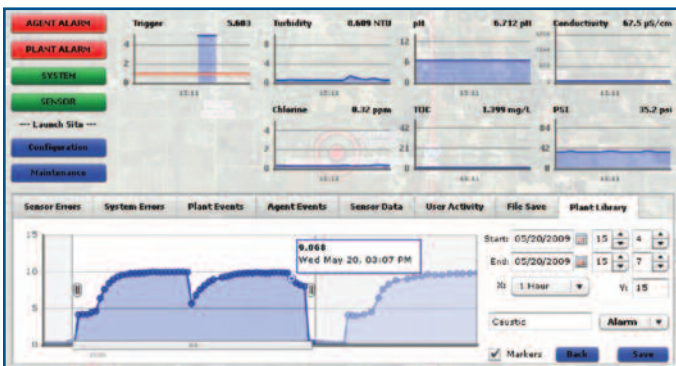


View and compare multiple monitoring sites with a simple "double-click" to access this in-depth pop-up screen.



Scroll over the sensor graph to note the time and value of individual sensor measurements. The tabs in the lower portion of the pop-up screen allow access to all of the normal features of the Event Monitor. The Plant Event Library is showing at the bottom of the screen (left).

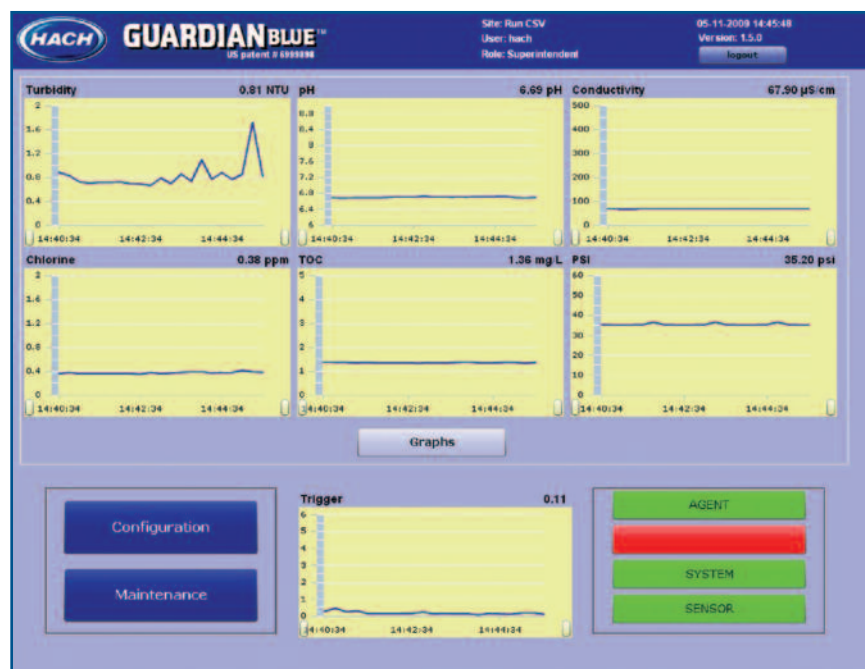
Downloading and backing-up data for further analysis and security purposes is easy. Simply select the log files you wish to download, or choose “from the last download point”, and click Export.



You can also name Plant Events using the horizontal scroll bar which allows you to capture the Trigger Signal of an event or water quality excursion. Then, assign it a priority and save it for future recall by the Event Monitor.

CityGuard and the Event Monitor

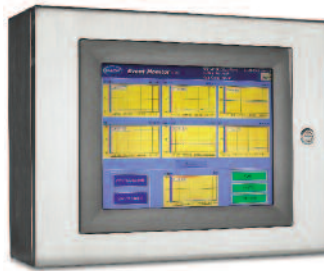
If you prefer the familiar interface of the Event Monitor, simply click on “Launch Site” and log in to your Event Monitor —no additional training is required since the interface is exactly the same. The Event Monitor screens are available just as though you were standing in front of the instrument.



Not sure what an Event Monitor is?

The Event Monitor is a powerful data processing tool which takes water quality data from online sensors and develops a baseline and a trigger signal. The trigger signal is automatically updated every minute, with the data compared to the baseline and user-set threshold. If a water quality event is detected, the Event Monitor will alarm. From your computer, with CityGuard, view the status of and interact with Event Monitors in your distribution system.

The Event Monitor brings in data from the Water Distribution Monitoring Panel (WDMP sc) or Source Water Monitoring Panel (SWMP sc) for a powerful event detection system. These systems can be advanced through the GuardianBlue Early Warning System.



Event Monitor

At Hach, it's about learning from our customers and providing the right answers. It's more than ensuring the quality of water—it's about ensuring the quality of life. When it comes to the things that touch our lives...

Keep it pure.

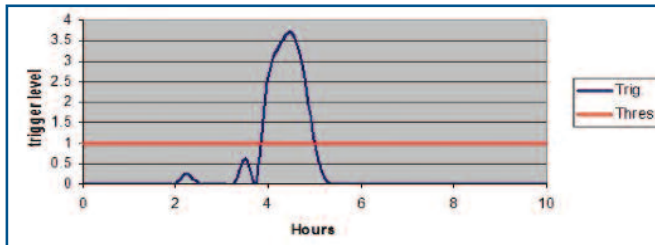
Make it simple.

Be right.

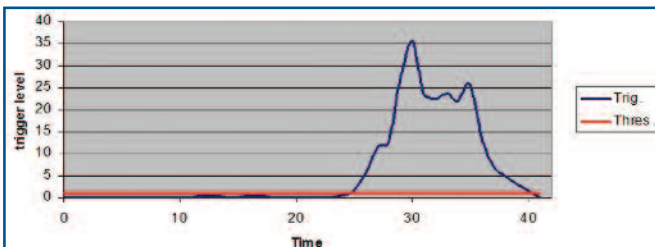
For current price information, technical support, and ordering assistance, contact the Hach office or distributor serving your area.

In the United States, contact:

HACH COMPANY World Headquarters
P.O. Box 389
Loveland, Colorado 80539-0389
U.S.A.
Telephone: 800-604-3493
Fax: 970-669-2932
E-mail: orders@hach.com
www.hachhst.com



Caustic Overfeed Event



Roadwork Event



Water Distribution Monitoring Panel (WDMP sc)



GuardianBlue Early Warning System



Source Water Monitoring Panel (SWMP sc)

For more information, visit: www.hachhst.com

Requirements

CityGuard Server Requirements

- Operating System: Windows 2003 with current service pack, Windows XP Pro
- Memory: 1GB RAM
- Disk Space: 5GB available disk space
- Network TCP/IP: Port 80, 8000-8003
- Processor: 2GHz

Browser Requirements (for web clients):

- Internet Explorer 7 or 8 or higher;
- FireFox 3 or higher
- Flash 10 or higher installed

Communications Requirements:

- TCP/IP connection of at least 512 kbit/sec
- Recommend 1MB/sec for optimal performance

LIT2648 Rev 1

H12 Printed in U.S.A.

©Hach Company, 2012. All rights reserved.

In the interest of improving and updating its equipment, Hach Company reserves the right to alter specifications to equipment at any time.



Hach Homeland Security Technologies focuses on the development of innovative and breakthrough technologies that can be used to detect accidental or intentional contamination events, terrorist activity, and improve general operational control in water.



Homeland Security
Technologies®