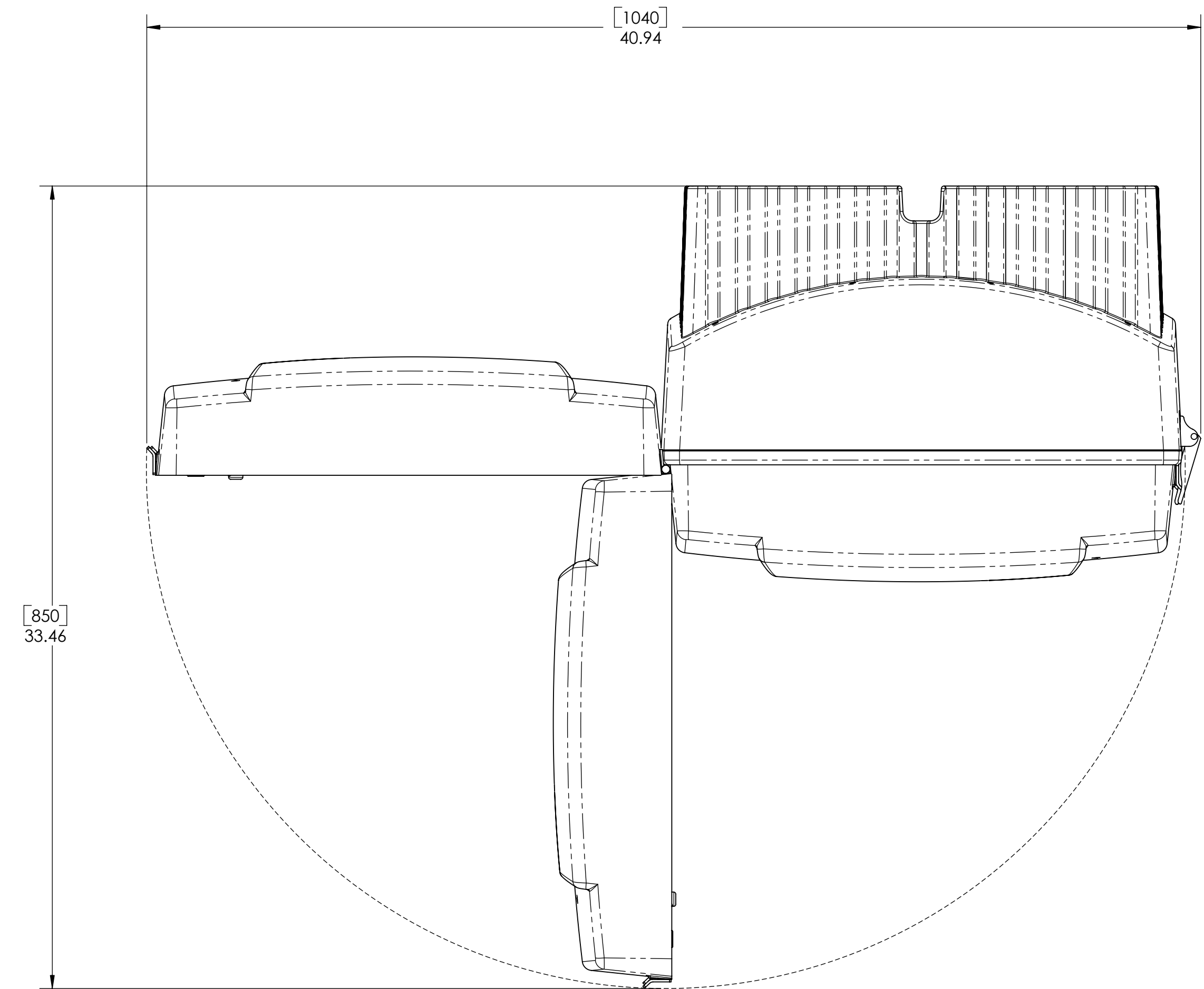
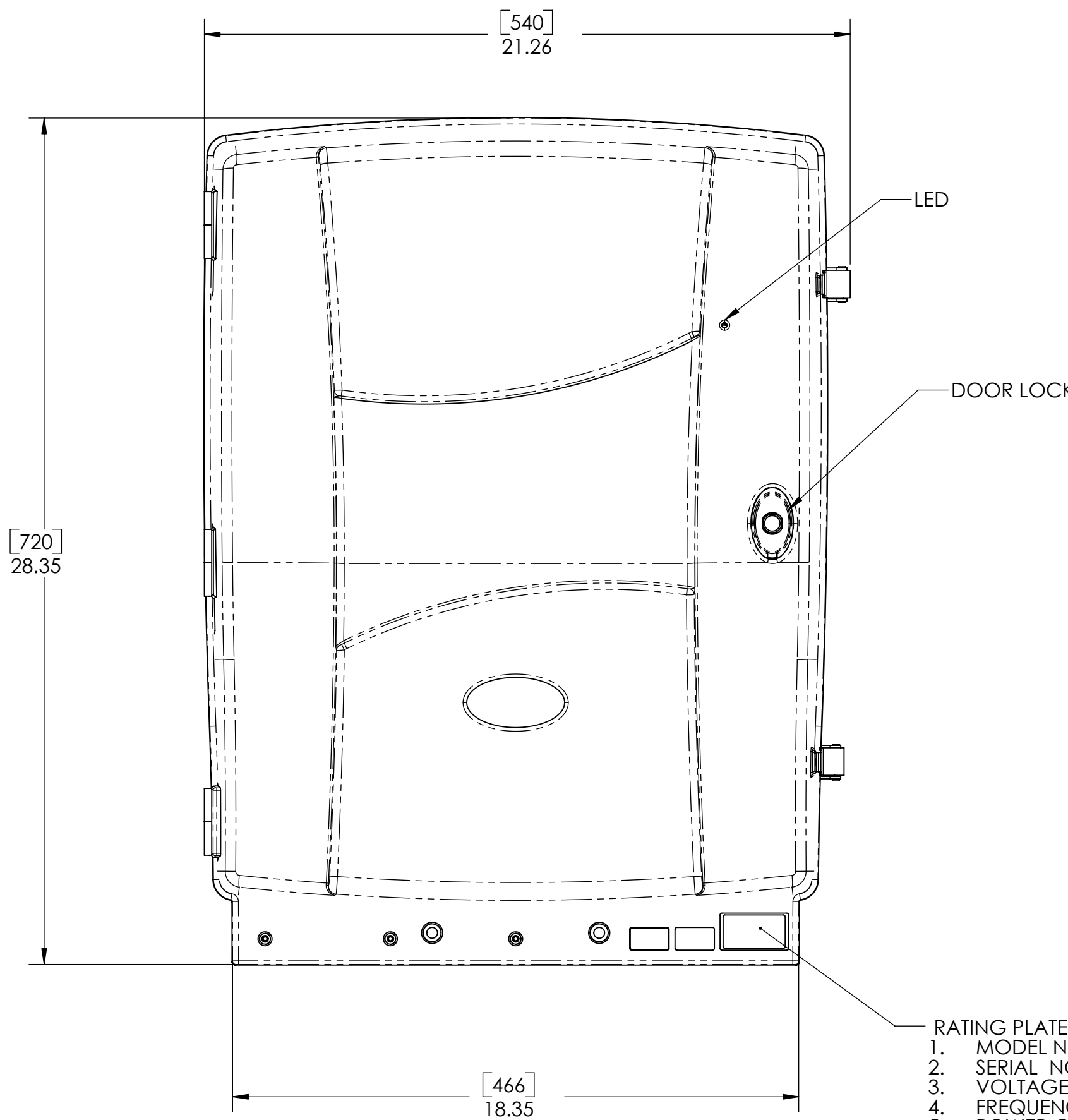
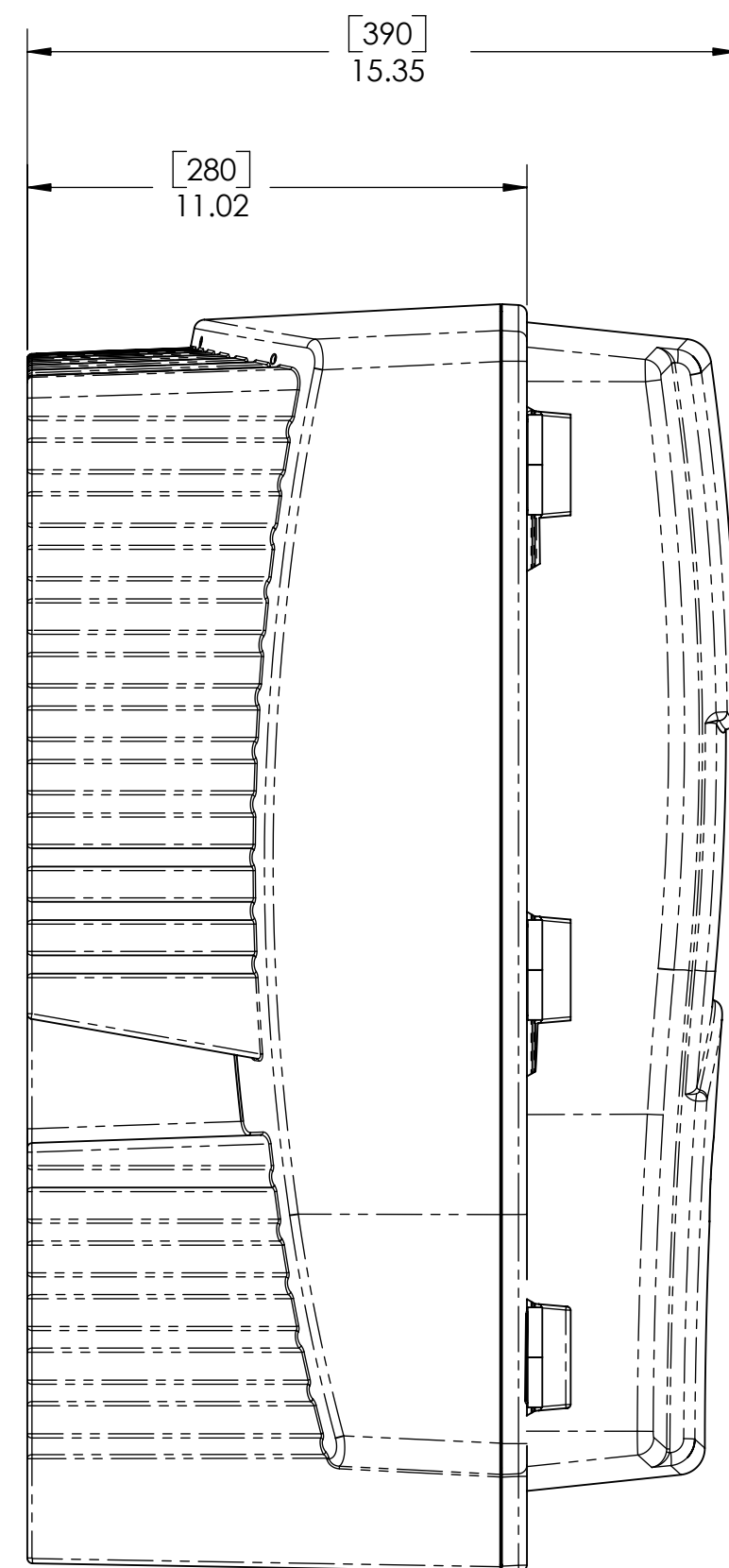
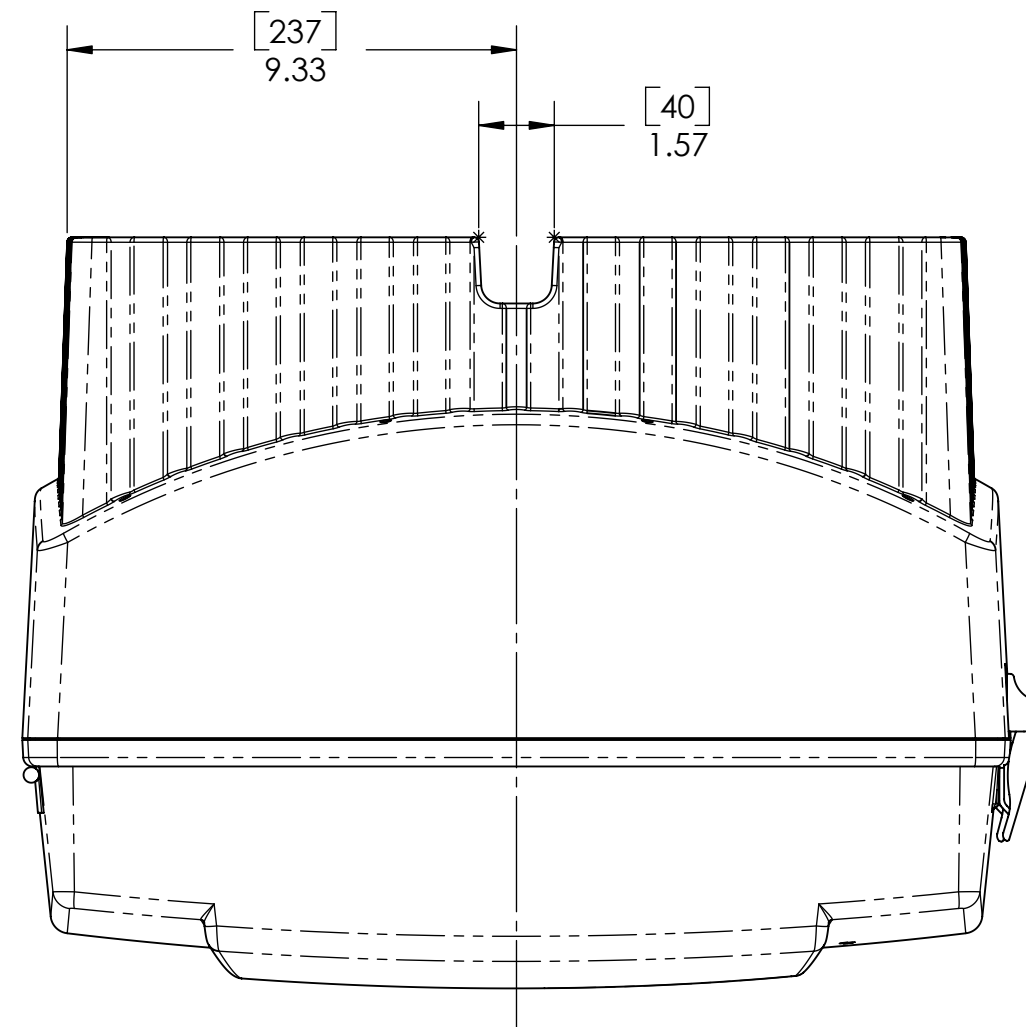


NOTES:
1. ALL DIMENSIONS ARE IN INCHES [MILLIMETERS].

REVISION		
REV	DESCRIPTION	APPROVED
A	Production Release	Venkate Raman

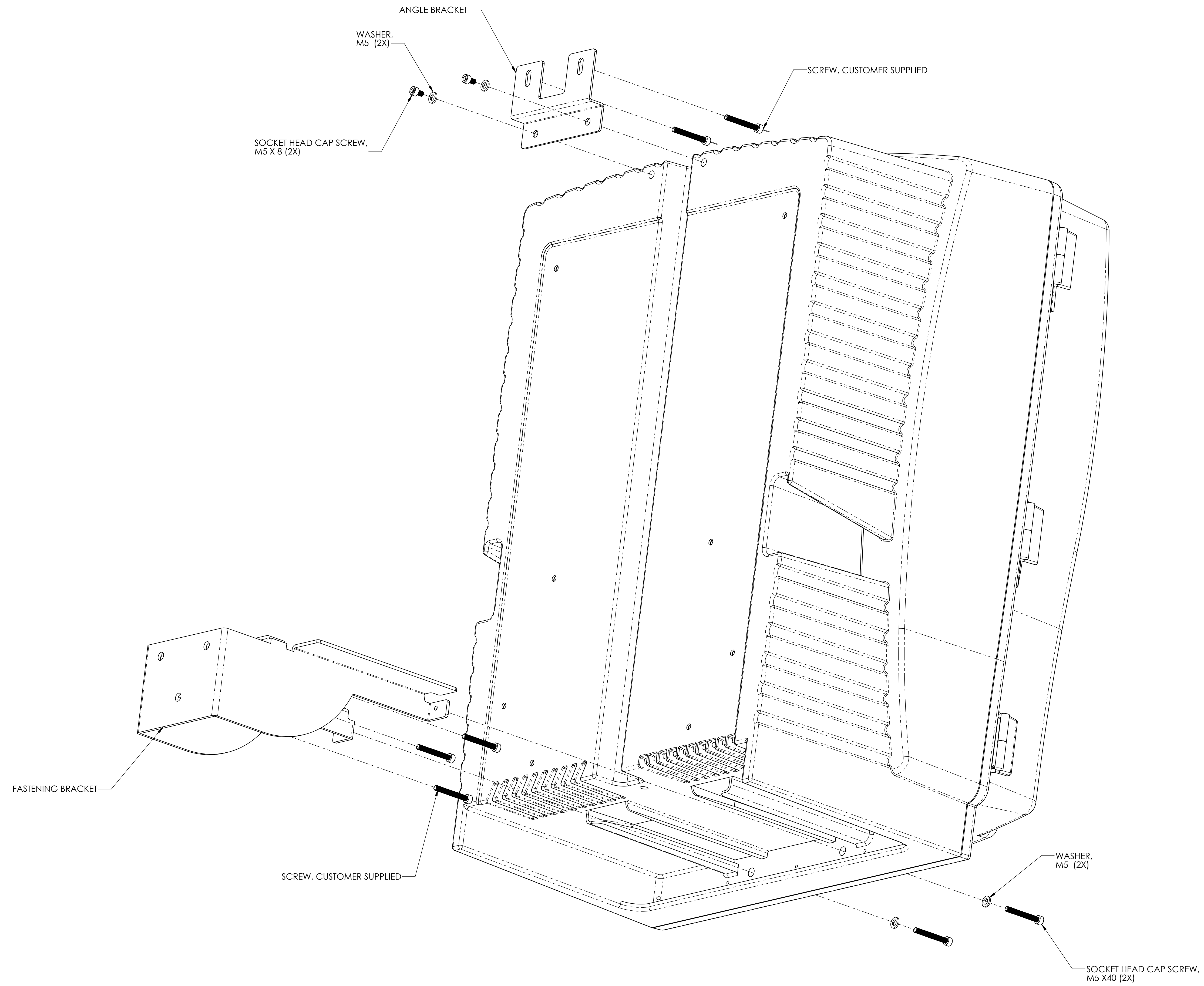


INSTRUMENT DIMENSIONS

GENERAL INFORMATION:

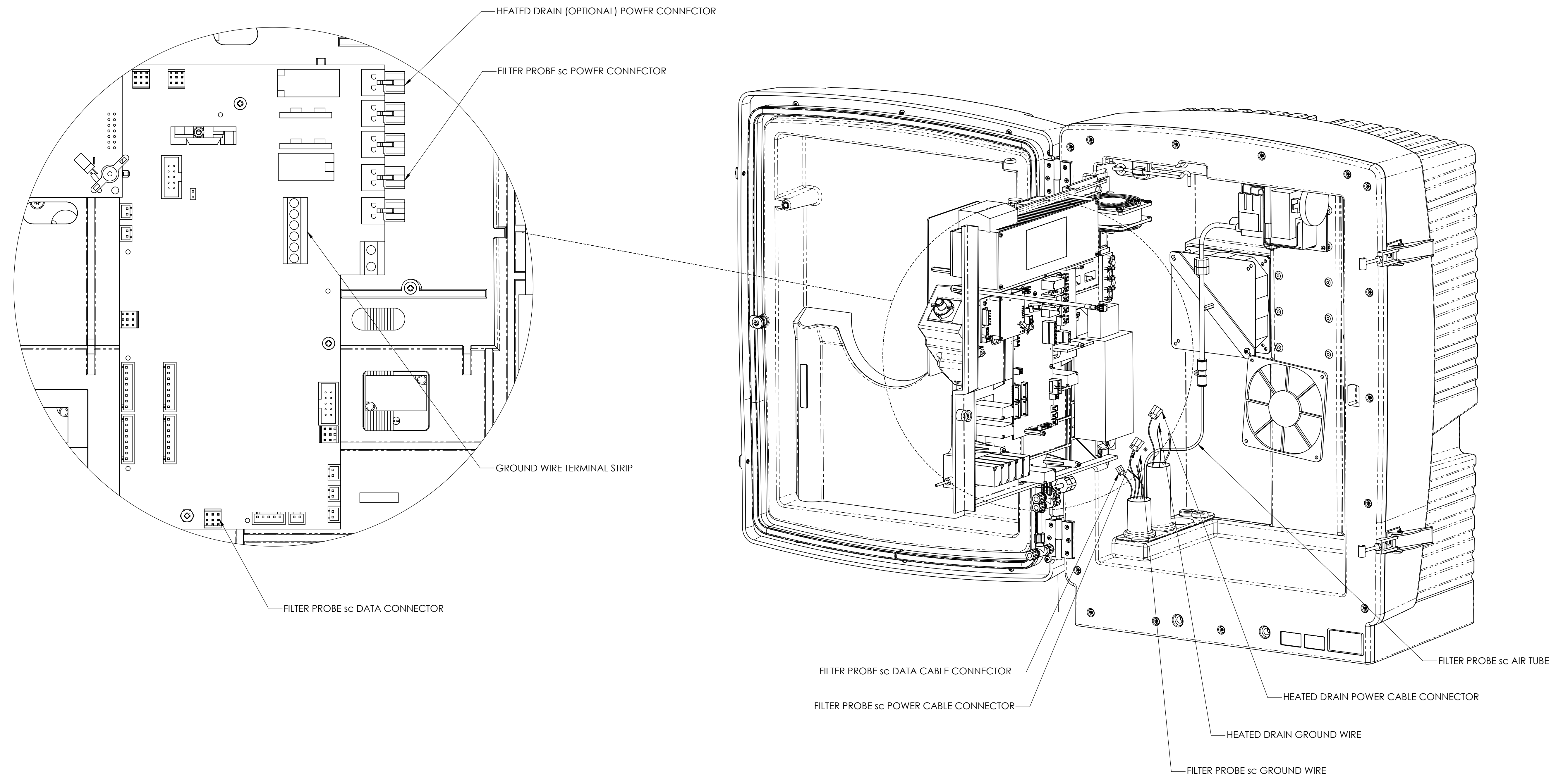
- ENCLOSURE RATING: IP55
- ENCLOSURE MATERIAL: ASA / PC UV-RESISTANT
- POWER SUPPLY: POWER SUPPLY WITH POWER CABLE ONLY USING sc1000 CONTROLLER.
- DATA TRANSMISSION: DATA TRANSMISSION WITH DATA CABLE ON sc1000 CONTROLLER.
- ELECTRICAL POWER CONSUMPTION: 400 VA (MEAN), MAXIMUM, 1000 VA (WITH 10 m HEATED FILTER PROBE sc TUBING).
- OPERATING TEMPERATURE: -20 TO 45 °C (-4 TO 113 °F); 95% RELATIVE HUMIDITY, NON-CONDENSING.
- SAMPLE TEMPERATURE: +4 TO 40 °C (39 TO 104 °F)
- PERMISSIBLE pH VALUE OF THE SAMPLE: 5 TO 9
- WEIGHT: APPROX. 31 Kg, WITHOUT FILTER PROBE sc AND WITHOUT CHEMICALS.

NOTICE-HACH COMPANY CLAIMS PROPRIETARY RIGHTS IN THE INFORMATION DISCLOSED ON THIS DRAWING. IT IS ISSUED IN CONFIDENCE FOR ENGINEERING INFORMATION ONLY AND MAY NOT, IN WHOLE OR IN PART, BE USED TO MANUFACTURE ANYTHING, WHETHER OR NOT SHOWN HEREON, REPRODUCED OR DISCLOSED TO ANYONE WITHOUT DIRECT PERMISSION FROM HACH COMPANY.			
MATERIAL NA	UNLESS OTHERWISE SPECIFIED: DIMENSIONS ARE IN INCHES TOLERANCES: X = ± XX = ± XXX = ± ANGLES = ±	NAME TCS DATE 09/27/04	DATE 09/27/04
DRAWN ENGINEER RM		HACH COMPANY 5600 LINDBERH DR. LOVELAND, CO. 80539	
THIRD ANGLE PROJECTION		TITLE: TRANSMITTAL, AMTAX / PHOSPHAX ANALYZER	
DO NOT SCALE THIS SHEET		SIZE D	REV A
		SCALE: 1:4	WEIGHT: 35.783 SHEET 1 OF 3



WALL MOUNTING HARDWARES

SIZE	DWG. NO.	REV
D	6176387	A
SCALE: 1:4	WEIGHT:	SHEET 2 OF 3



CONNECTING FILTER PROBE _{sc} AND OPTIONAL HEATED DRAIN

COMPONENTS REMOVED FOR CLARITY