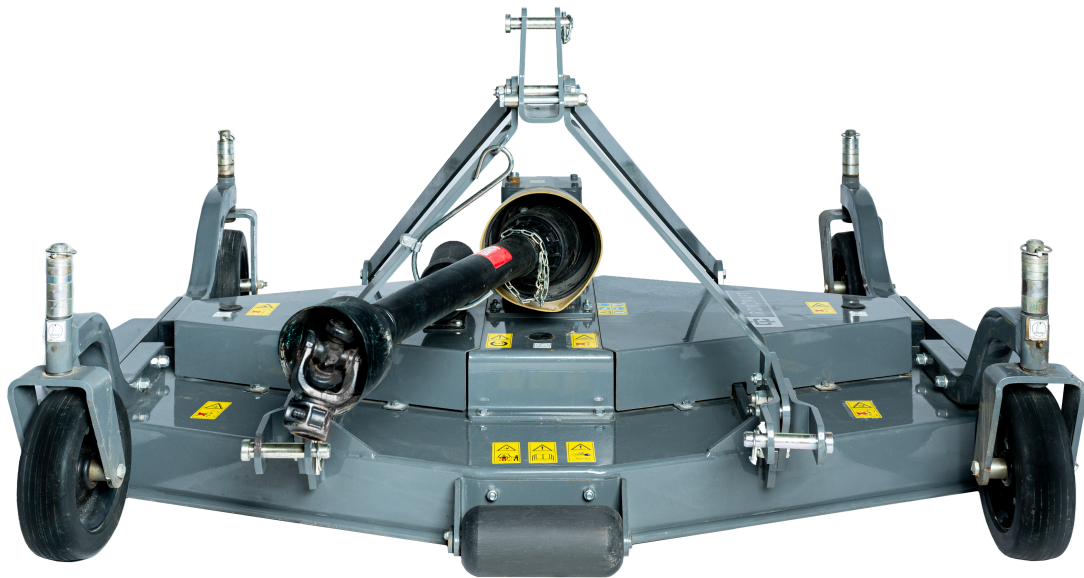


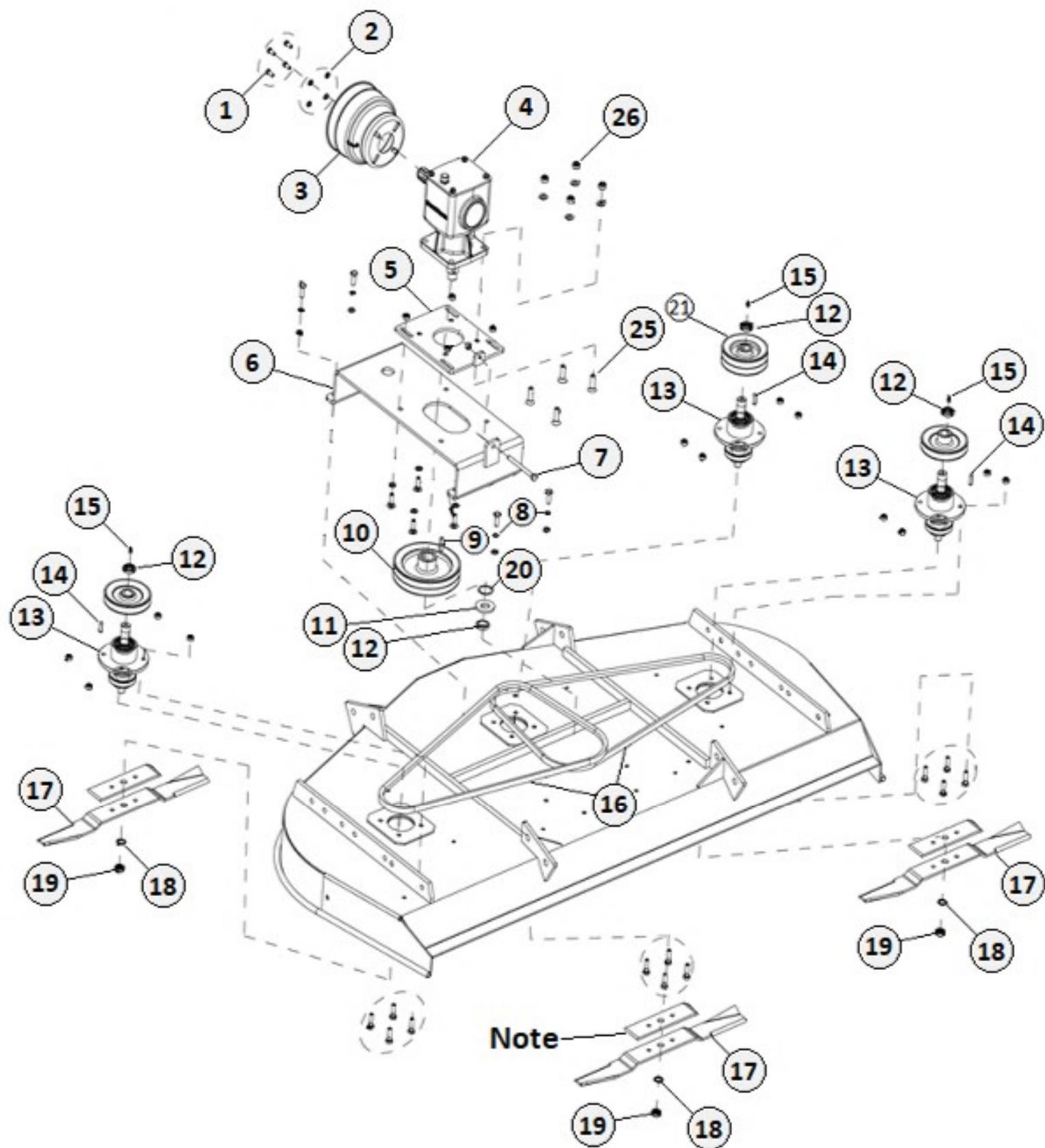
# IRONCRAFT

Contact your Authorized Ironcraft Dealer  
for all your parts needs



# SGM SERIES FINISH MOWER PARTS MANUAL

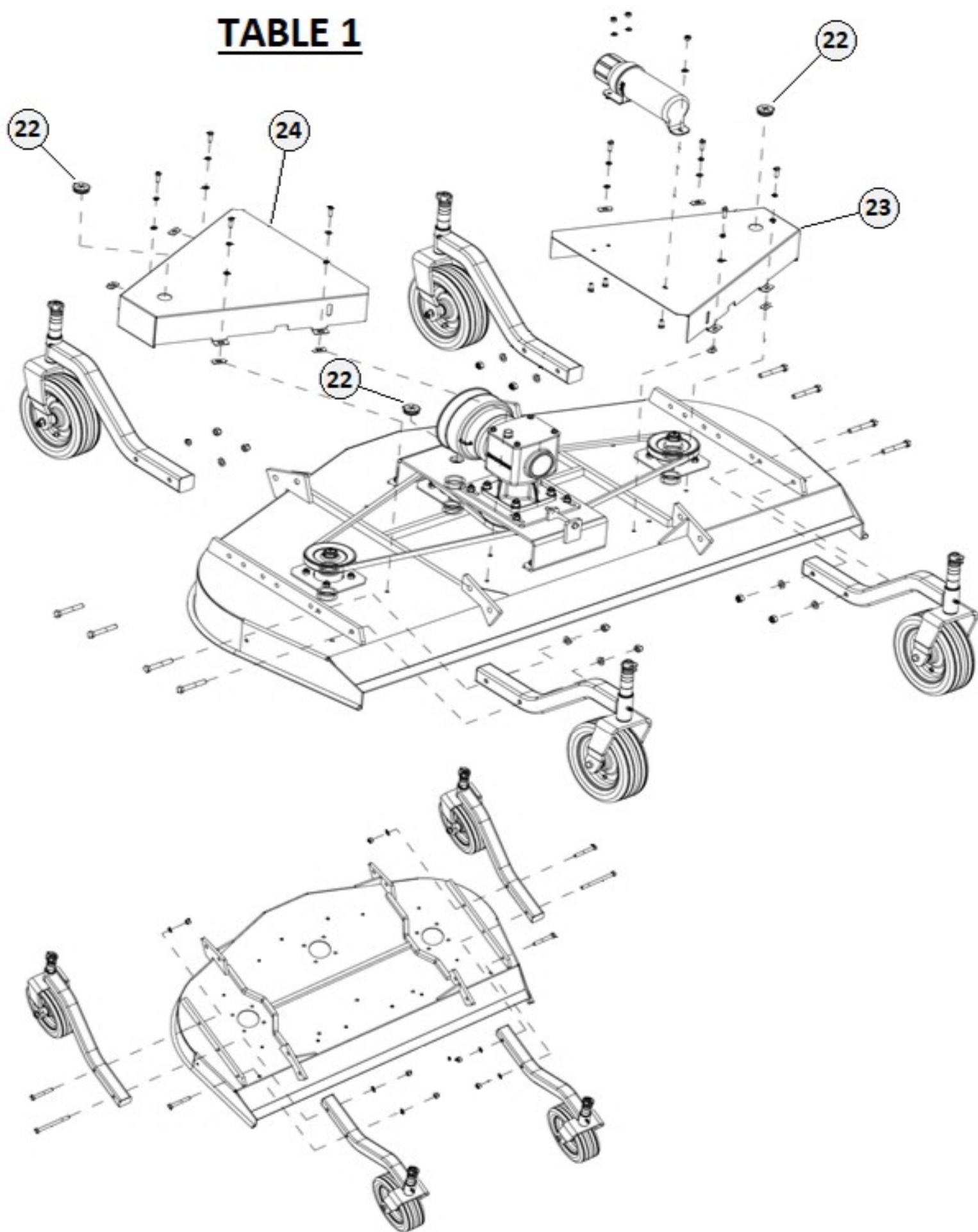
**TABLE 1 - SGM - GROOMING MOWER PARTS - FRAME ASSY**



**NOTE: 7-ft Model SGM-V1 will use a 3-hole blade #SK33175 and also a Blade Support Plate #SK33195 that will be attached by 2pcs #SK6603 M1 x 1.50 x 35 Bolt and 2pcs #SK1298 m10 x 1.50 Nylock Nut**

# SGM - GROOMING MOWER PARTS - FRAME ASSY

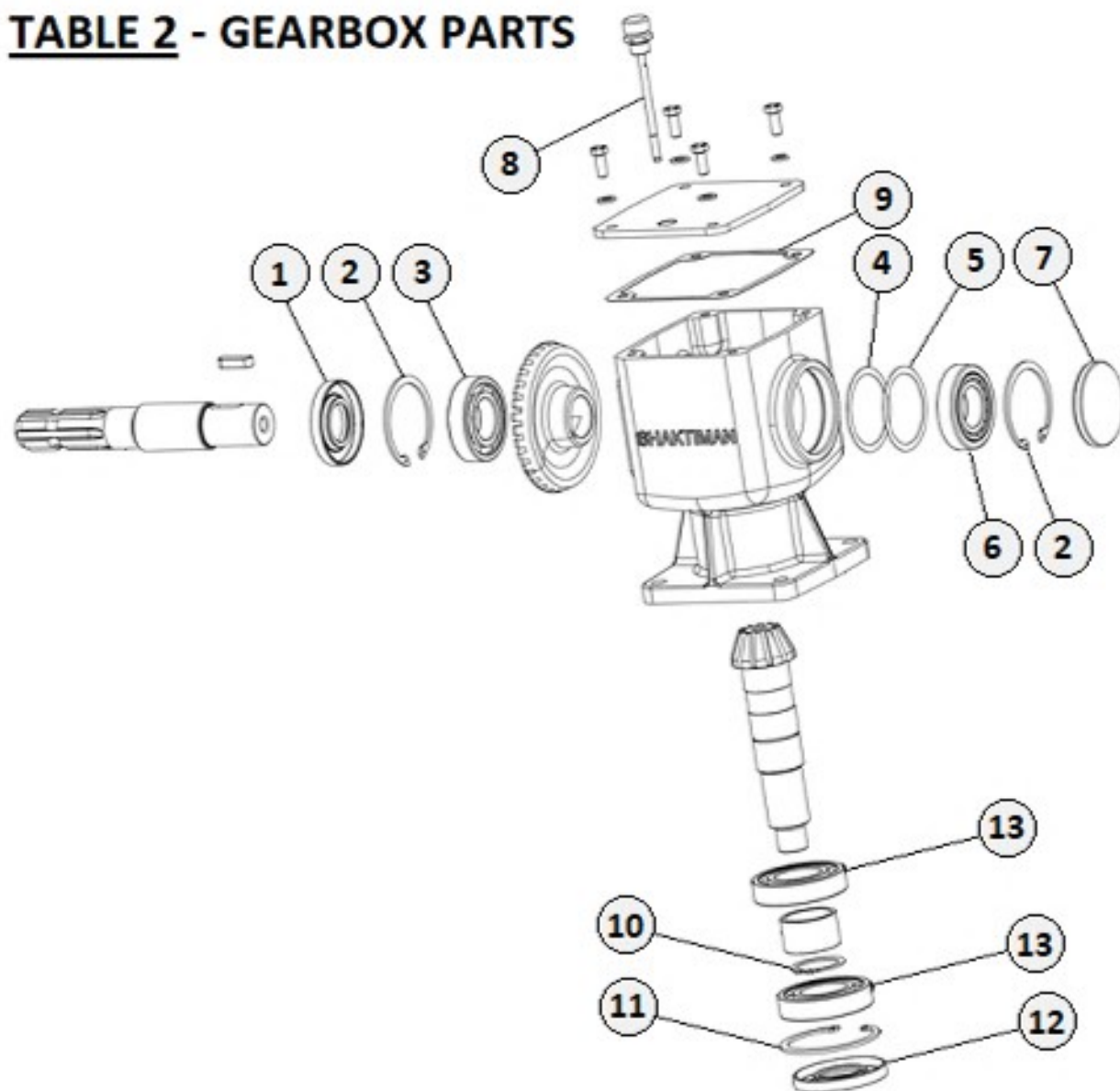
**TABLE 1**





**TABLE 1 – SGM – GROOMING MOWER PARTS – FRAME ASSY**

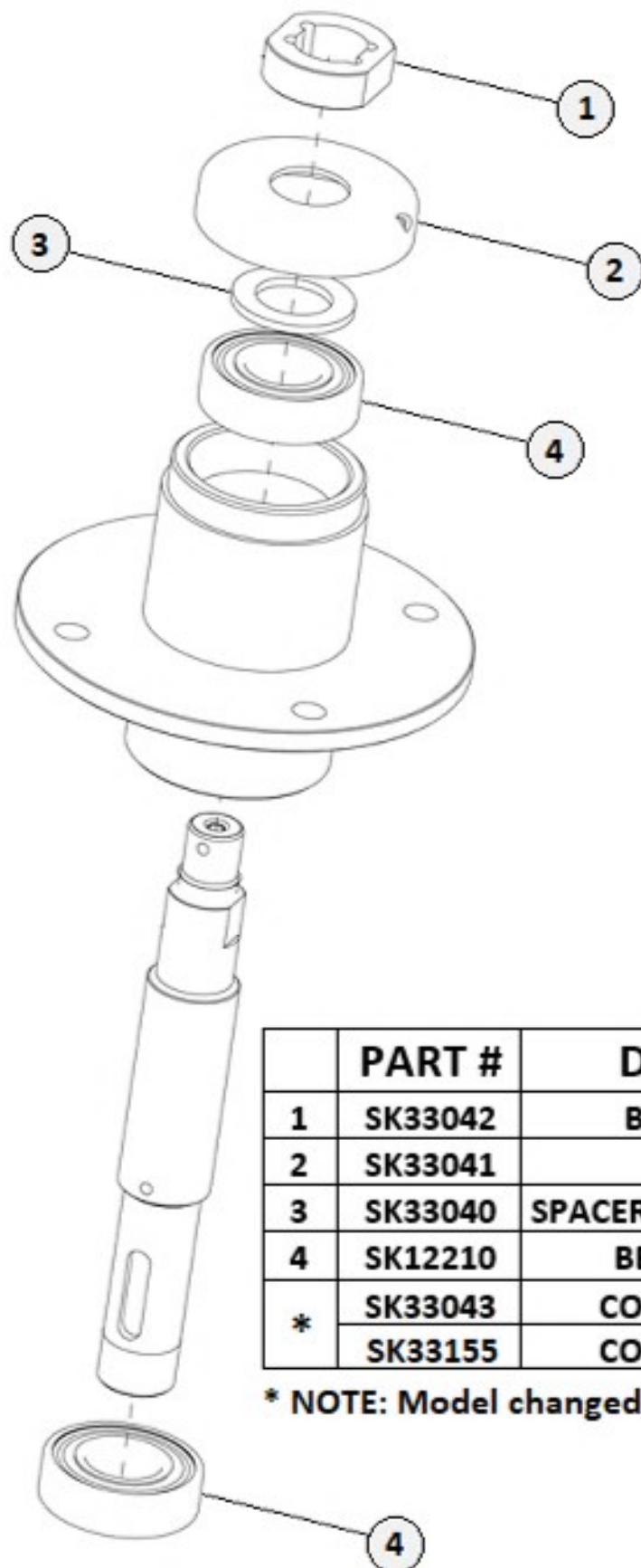
	<b>PART #</b>	<b>DESCRIPTION</b>	<b>SGM UNIT</b>	<b>Qty</b>
1	SK8040	HEX BOLT M8 X 1.25 X 20	All	4
2	SK8064	PLAIN WASHER 8mm	All	4
3	SK17788	PTO CONE SHIELD	All	1
4	SK33085	COMPLETE GEARBOX ASSY	All	1
5	SK33020	GEARBOX SUPPORT PLATE	All	1
6	SK33017	GEARBOX SUPPORT WELDMENT	4-FT	1
	SK33018	GEARBOX SUPPORT WELDMENT	5-FT	1
	SK33019	GEARBOX SUPPORT WELDMENT	6-FT	1
	SK33016	GEARBOX SUPPORT WELDMENT	7-FT	1
7	SK33102	HEX BOLT M10 X 1.50 X75	4-FT	1
	SK33108	HEX BOLT M10 X 1.50 X 90	5-FT	1
	SK33011	HEX BOLT M10 X 1.50 X 115	6-FT	1
	SK33011	HEX BOLT M10 X 1.50 X 115	7-FT	1
8	SK33099	SCHNNOR WASHER	All	4
9	SK33054	PARALLEL KEY M10 X 8 X 40	All	1
10	SK33062	SPB TYPE PULLEY – 2 GROOVES	4-FT	1
	SK33062	SPB TYPE PULLEY – 2 GROOVES	5-FT	1
	SK33063	SPB TYPE PULLEY – 2 GROOVES	6-FT	1
	SK33062	SPB TYPE PULLEY – 2 GROOVES	7-FT	1
11	SK33079	WASHER – DRIVE PULLEY	All	1
12	SK33006	GUK SELF LOCKING NUT M25 X 1.5	All	4
13	SK33043	SPINDLE ASSEMBLY	(SGM V0)	3
	SK33155	SPINDLE ASSEMBLY	(SGM V1)	3
14	SK18168	KEY M8 X 7 X 32	All	3
15	SK33058	SPB TYPE PULLEY – 1 GROOVE	4-FT	1
	SK33059	SPB TYPE PULLEY – 1 GROOVE	5-FT	1
	SK33059	SPB TYPE PULLEY – 1 GROOVE	6-FT	1
	SK33002	SPB TYPE PULLEY – 1 GROOVE	7-FT	1
16	SK33051	BELT SET	4-FT	1
	SK33052	BELT SET	5-FT	1
	SK33111	BELT SET	6-FT	1
	SK33110	BELT SET	7-FT	1
17	SK33055	MOWER BLADE 60 X 6 X L-424	4-FT	3
	SK33056	MOWER BLADE 60 X 6 X L-516	5-FT	3
	SK33057	MOWER BLADE 60 X 6 X L-618	6-FT	3
	SK33010	MOWER BLADE 60 X 6 X L-728	7-FT	3
or	SK33175	3 HOLE MOWER BLADE 60 X 6 X L-728	7-FT	3
18	SK33100	SCHNNOR WASHER M18	All	3
19	SK33113	GUA SELF LOCKING NUT M18 X 1.5	(SGM V0)	3
	SK33138	GUA SELF LOCKING NUT M18 X 1.5 L=10	(SGM V1)	3
20	SK1425	SHIM 45 X 35 X 1.0mm	All	1
21	SK33060	SPB TYPE PULLEY – 2 GROOVES	4-FT	1
	SK33061	SPB TYPE PULLEY – 2 GROOVES	5-FT	1
	SK33061	SPB TYPE PULLEY – 2 GROOVES	6-FT	1
	SK33003	SPB TYPE PULLEY – 2 GROOVES	7-FT	1
22	SK33021	ZERK CAP	All	3
23	SK33088	RH – BELT COVER W/ROD	4-FT	1
	SK33090	RH – BELT COVER W/ROD	5-FT	1
	SK33092	RH – BELT COVER W/ROD	6-FT	1
	SK33086	RH – BELT COVER W/ROD	7-FT	1
24	SK33089	LH – BELT COVER W/ROD	4-FT	1
	SK33091	LH – BELT COVER W/ROD	5-FT	1
	SK33093	LH – BELT COVER W/ROD	6-FT	1
	SK33087	LH – BELT COVER W/ROD	7-FT	1
25	SK2607	CSK BOLT M12 X 1.75 X 45	All	4
26	SK1209	NYLOCK NUT M12	All	4

**TABLE 2 - GEARBOX PARTS**

	<b>PART #</b>	<b>DESCRIPTION</b>	<b>SGM UNIT</b>	<b>Qty</b>
1	SK1001	INPUT SEAL 35 X 72 X 10	All	1
2	SK1002	CIRCLIP INTERNAL 72mm	All	2
3	SK10143	FRONT INPUT BEARING 6207	All	1
4	SK4653	SHIM 72 X 60 X 0.30mm	All	1
5	SK4652	SHIM 72 X 60 X 0.20mm	All	1
6	SK1003	REAR INPUT BEARING 30207	All	1
7	SK14119	CAP SEAL 72 X 8	All	1
8	SK14316	BREATHER/DIPSTICK 106mm-M16 X 15	All	1
9	O/L	GASKET – USE SILICON SEALANT	All	---
10	SK8027	CIRCLIP EXTERNAL 40mm	All	1
11	SK1130	CIRCLIP INTERNAL 80mm	All	1
12	SK35005	OUTPUT SEAL 40 X 80 X 10	All	1
13	SK7033	OUTPUT BEARING 6208	All	2



## TABLE 3 - SPINDLE ASSEMBLY



	PART #	DESCRIPTION	SGM UNIT	Qty
1	SK33042	BLADE BUSHING	All	1
2	SK33041	DUST COVER	All	1
3	SK33040	SPACER WASHER 30 X 60 X 5	All	1
4	SK12210	BEARING 6206-RS	All	2
*	SK33043	COMPLETE SPINDLE	SGM V0	A/R
	SK33155	COMPLETE SPINDLE	SGM V1	A/R

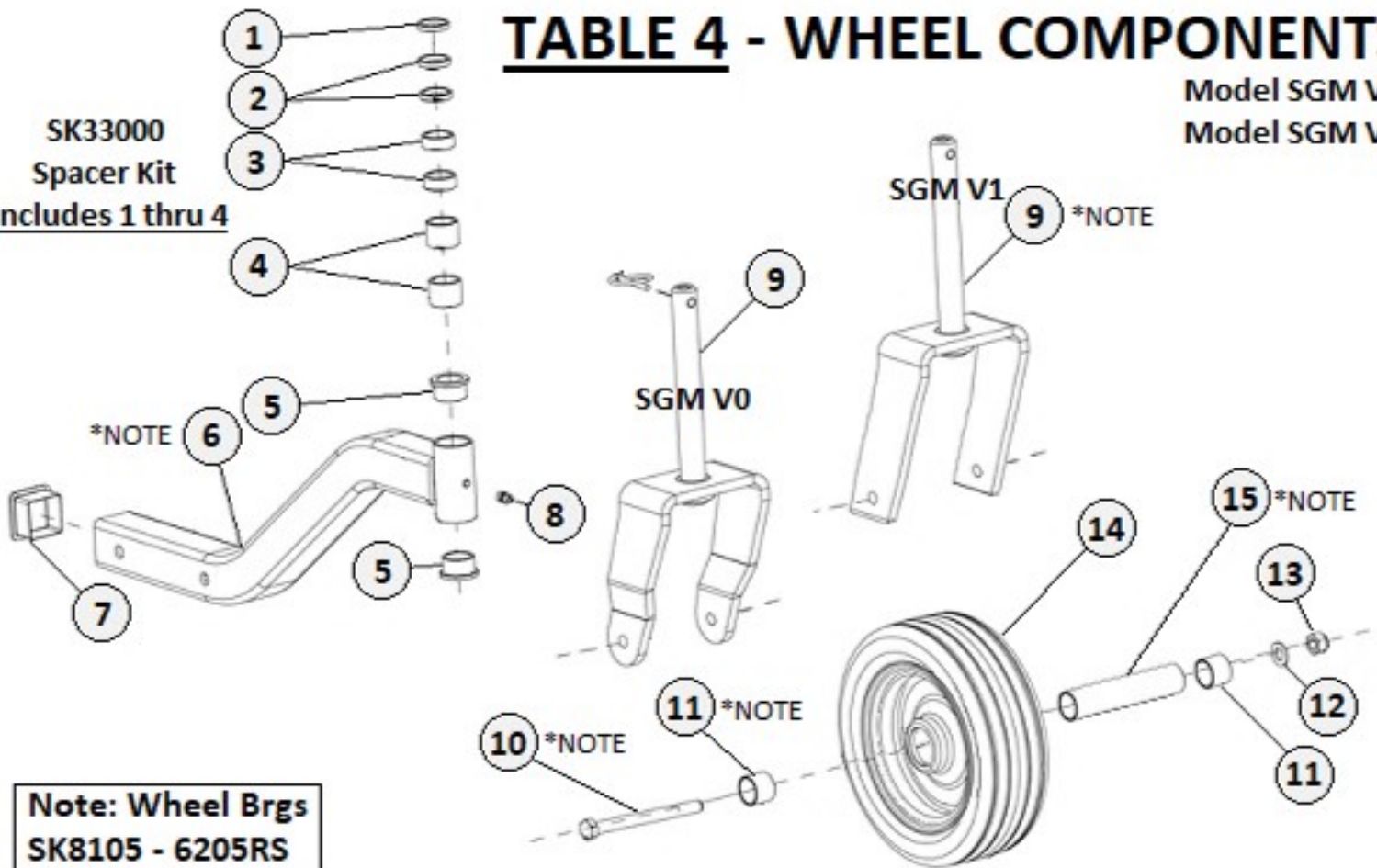
\* NOTE: Model changed 09-01-2020

# TABLE 4 - WHEEL COMPONENTS

Model SGM V0

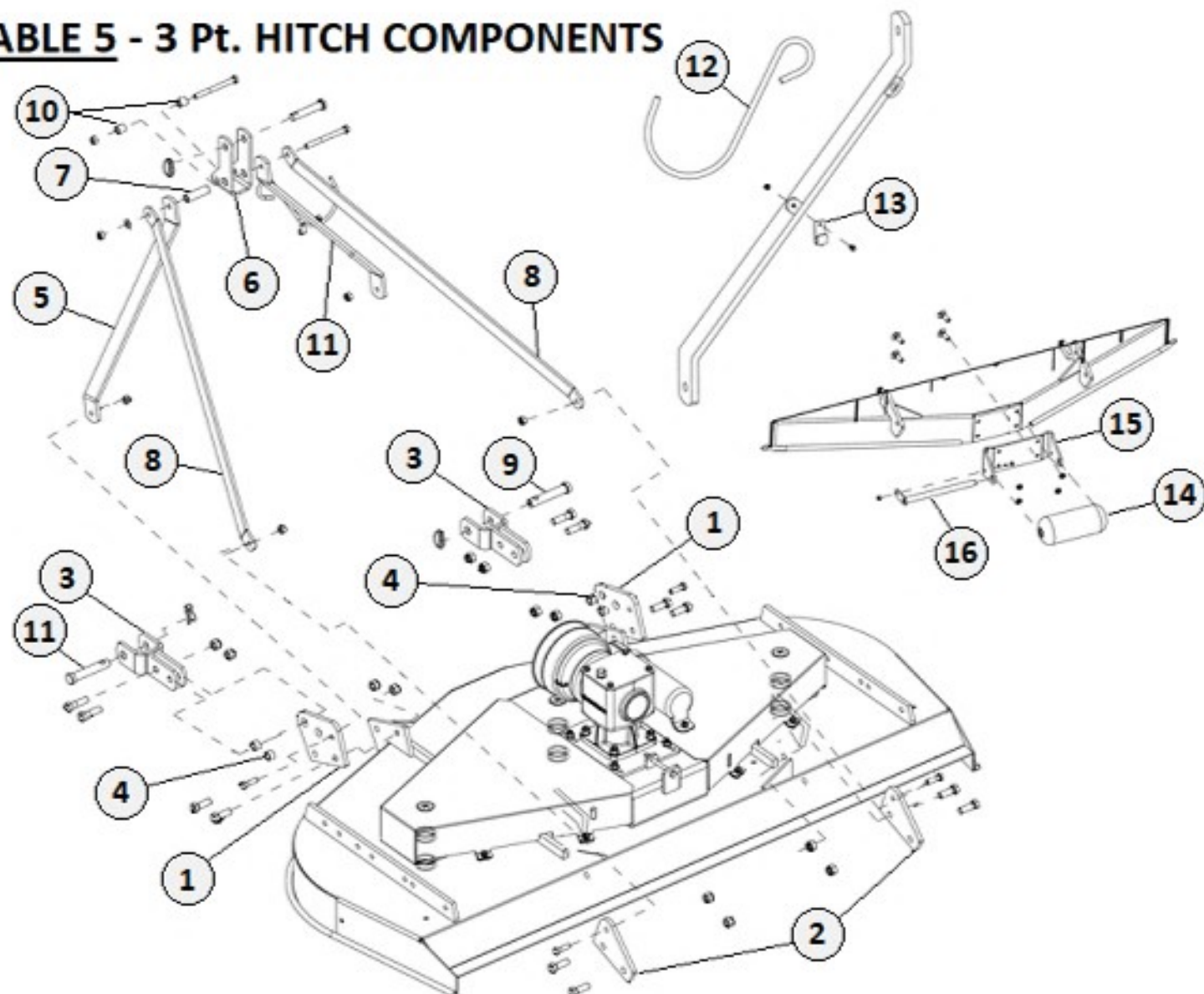
Model SGM V1

SK33000  
Spacer Kit  
Includes 1 thru 4



Note: Wheel Brgs  
SK8105 - 6205RS

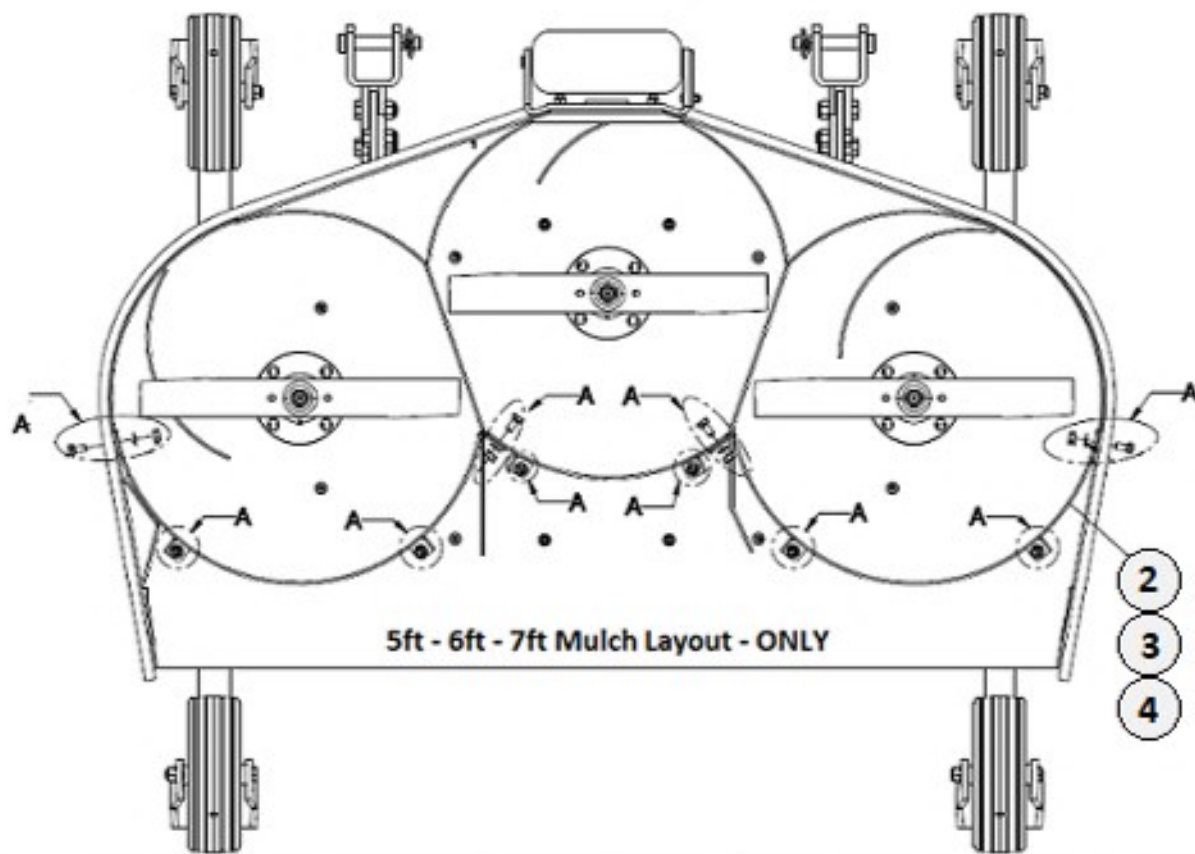
Item	Part #	Description	SGM UNIT	Qty
1	SK33116	HEIGHT ADJ. SPACER 25 X 32 X 5	All	1
2	SK33073	HEIGHT ADJ. SPACER 25 X 32 X 6	All	2
3	SK33074	HEIGHT ADJ. SPACER 25 X 32 X 12.5	All	2
4	SK33075	HEIGHT ADJ. SPACER 25 X 32 X 25	All	2
5	SK33007	FLANGED BEARING	All	2
6	SK33064	WHEEL ARM WELDMENT - Model SGM V0	All	1
	SK33181	WHEEL ARM WELDMENT *Note Model SGM V1	All	1
7	SK23163	PLASTIC CAP 50mm	All	1
8	SK20148	GREASE NIPPLE M8 X 1.25	All	1
9	SK33068	WHEEL YOKE - Model SGM V0	All	1
	SK33141	WHEEL YOKE *Note Model SGM V1	All	1
10	SK33037	HEX BOLT M12 X 1.75 X 135 (HT) 8.8 SGM V0	All	1
	SK33154	HEX BOLT M12 X 1.75 X 135 (HT) 8.8 *Note SGM V1	All	1
11	SK33070	WHEEL SPACER 30 X 26 X 23.5 Model SGM V0	All	2
	SK33143	WHEEL SPACER 30 X 26 X 31.75 *Note SGM V1	All	2
12	SK8126	PLAIN WASHER 12mm	All	1
13	SK1209	NYLOCK NUT M12 X 1.75	All	1
14	SK33008	TIRE/WHEEL WITHOUT BEARINGS	All	1
	SK124113716	TIRE/WHEEL WITH BEARINGS	All	1
15	SK33069	WHEEL MOUNTING PIPE - Model SGM V0	All	1
	SK33142	WHEEL MOUNTING PIPE - *Note Model SGM V1	All	1

**TABLE 5 - 3 Pt. HITCH COMPONENTS**

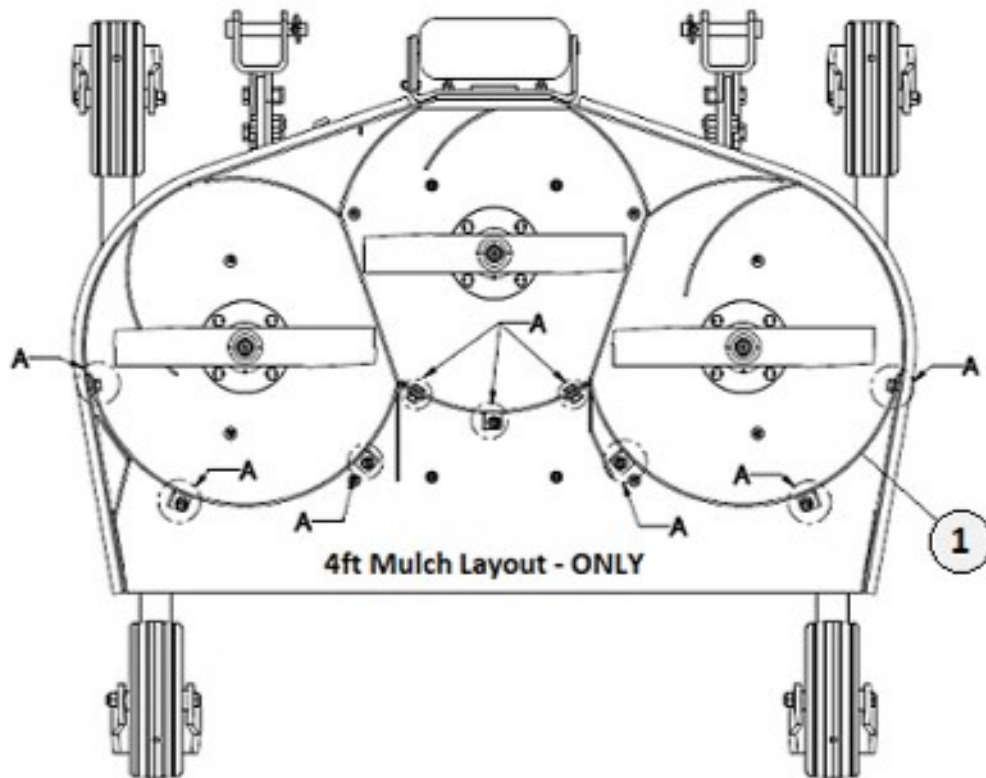
	PART #	DESCRIPTION	SGM UNIT	Qty
1	SK33025	CONNECTION PLATE FRONT	All	2
2	SK33026	CONNECTION PLATE REAR	All	2
3	SK33035	LOWER HITCH YOKE	All	2
4	SK33027	LOWER HITCH BUSHING	All	4
5	SK33028	LH TOP HITCH SUPPORT	All	1
6	SK33029	UPPER 3-POINT HITCH COUPLING	All	1
7	SK33030	UPPER 3-POINT SPACER	All	1
8	SK33032	TOP HITCH ARM	4-FT	2
	SK33033	TOP HITCH ARM	5-FT	2
	SK33034	TOP HITCH ARM	6-FT	2
	SK33031	TOP HITCH ARM	7-FT	2
9	SK1216	HITCH PIN CAT-I M22 X 129	All	2
10	SK33115	BUSHING 21 X 13 X 22	All	2
11	SK33117	RH TOP HITCH SUPPORT	All	1
12	SK14340	DRIVELINE HOOK	All	1
13	SK23147	HOOK HOLDING PLATE	All	1
14	SK33024	FRONT ROLLER	All	1
15	SK33023	FRONT ROLLER BRACKET	All	1
16	SK33022	FRONT ROLLER AXLE ROD	All	1



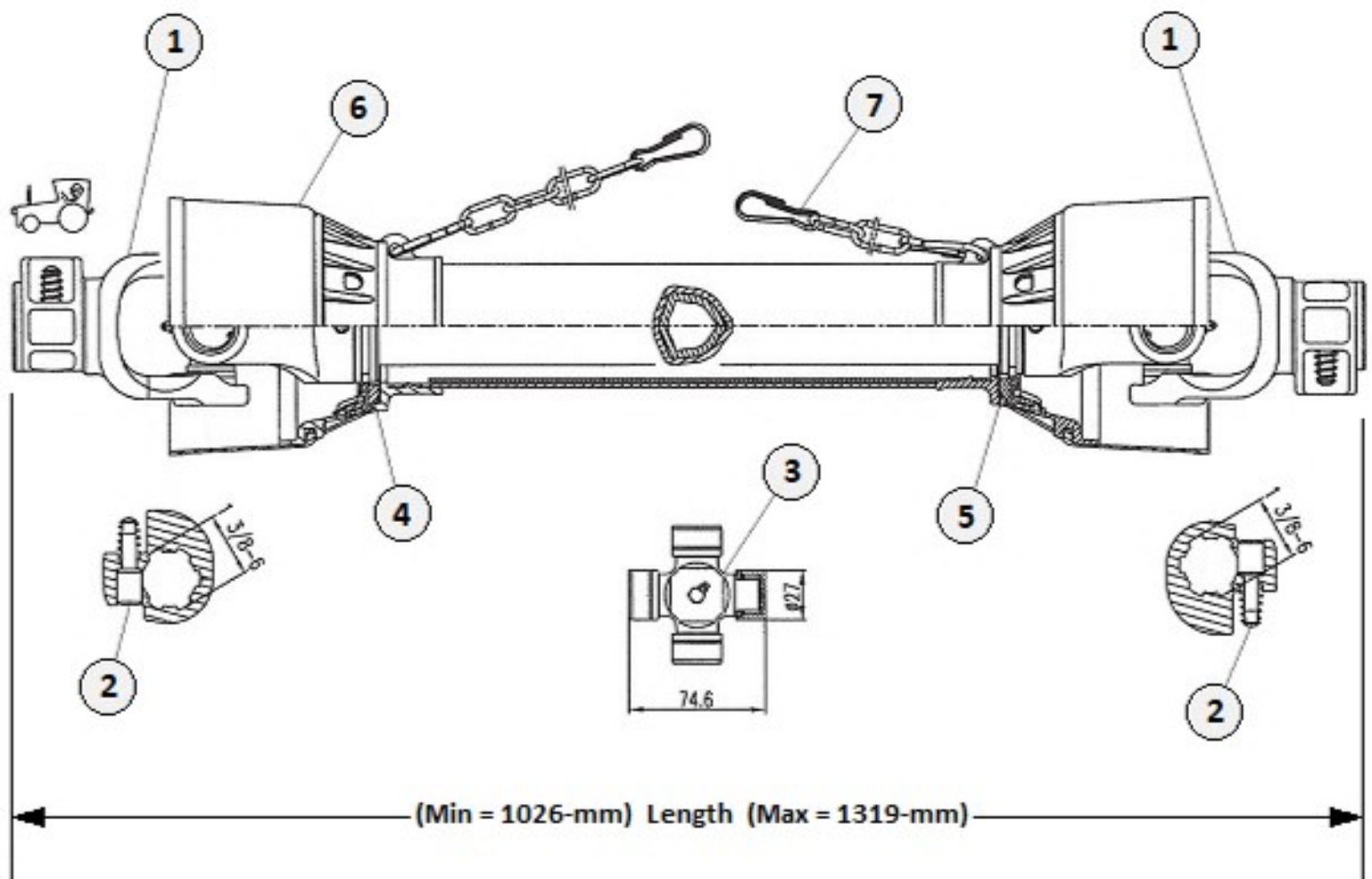
# TABLE 6 - MULCH KIT



	PART #	DESCRIPTION	SGM UNIT	Qty
1	SK33130	MULCHING KIT ASSEMBLY	4-FT	1
2	SK33131	MULCHING KIT ASSEMBLY	5-FT	1
3	SK33132	MULCHING KIT ASSEMBLY	6-FT	1
4	SK33133	MULCHING KIT ASSEMBLY	7-FT	1



# SGM PTO COMPONENTS



	<b>PART #</b>	<b>DESCRIPTION</b>	<b>Qty</b>
<b>1</b>	<b>552150</b>	<b>YOKE 1-3/8" 6-SPLINE</b>	<b>2</b>
<b>2</b>	<b>552151</b>	<b>PUSH PIN KIT</b>	<b>2</b>
<b>3</b>	<b>552152</b>	<b>CROSS KIT 27 X 74.6</b>	<b>2</b>
<b>4</b>	<b>552153</b>	<b>OUTER PLASTIC SHIELD BEARING</b>	<b>1</b>
<b>5</b>	<b>552154</b>	<b>INNER PLASTIC SHIELD BEARING</b>	<b>1</b>
<b>6</b>	<b>552155</b>	<b>COMPLETE DRIVELINE SHIELD</b>	<b>1</b>
<b>7</b>	<b>552005</b>	<b>SAFETY CHAIN</b>	<b>2</b>
	<b>191700</b>	<b>COMPLETE DRIVELINE</b>	