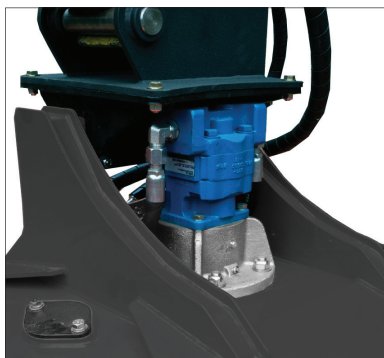
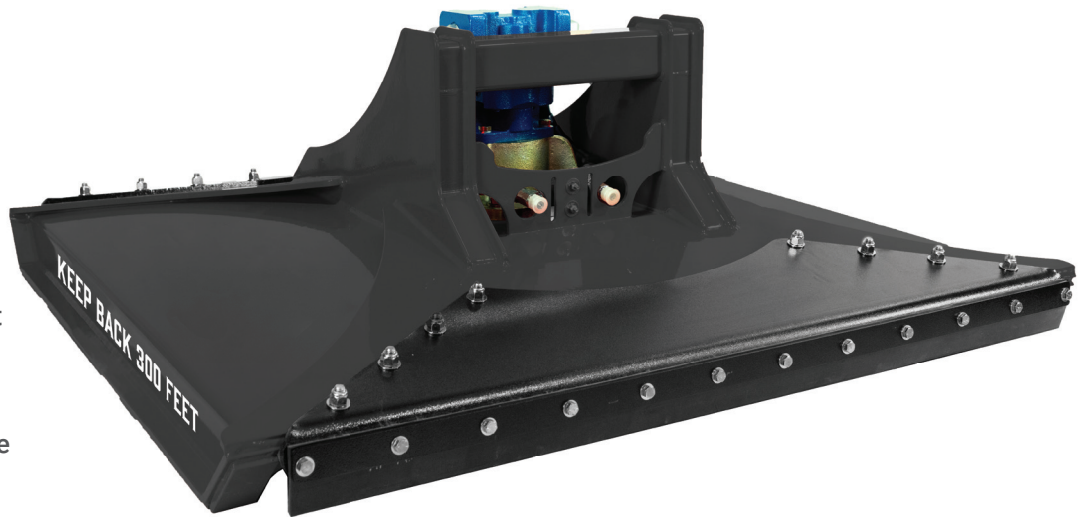




48" CYCLONE

ROTARY CLEARING MOWER

The 48" excavator rotary clearing mower is ideal for serious land clearing applications, capable of taking out 6"-10" trees depending on the model. The design and material quality allows for a lightweight construction to optimize machine stability without sacrificing blade speed and cut capacity. This mower clears land very efficiently and leaves a coarse finish.



	48"
BLADE CARRIER WEIGHT	68 lbs.
BLADE COUNT	2
BLADE LIFE EXPECTANCY	250 hrs, NO ROCKS
BLADE MATERIAL	Forged Steel Blades
BLADE WEIGHT	9 lbs.
CUT WIDTH	48"
CUTTING CAPACITY	6"
CUTTING TIP SPEED	20,100 ft/min
DRIVE TYPE	Direct Drive Hub
FLOW REQUIREMENTS	12-45 GPM
HOUSING MATERIAL	A572 Grade 50 Steel
HOUSING THICKNESS	1/4 SHROUD / 3/8" REINFORCED"
MAX PRESSURE	3,500 PSI
MINIMUM CUT HEIGHT	2"
OVERALL HEIGHT	21" (Without Mount)
OVERALL WIDTH	54"
RECOMMENDED MATERIAL	Hard Brush - Medium Trees - Grass - Brambles
RPM RANGE	1,300-1,600 RPM
WEIGHT	685 lbs.

