

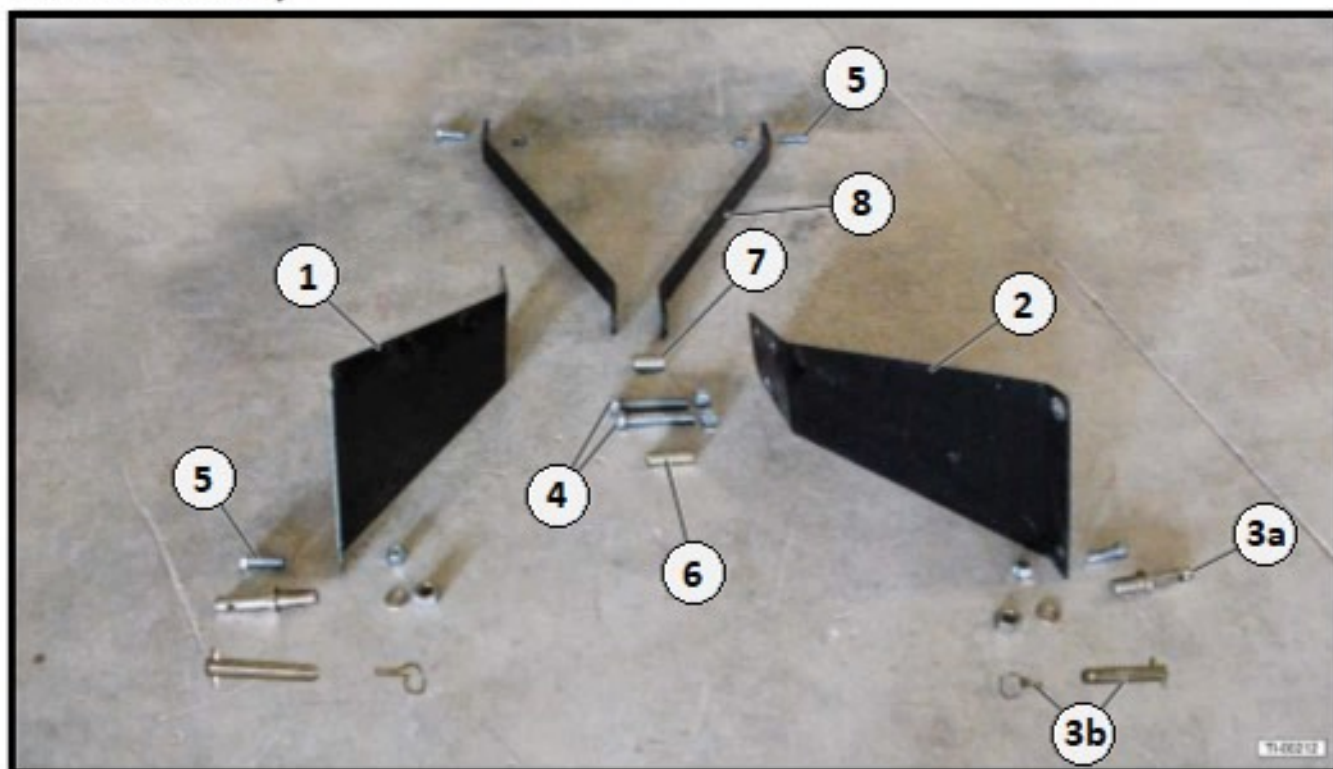
# IRONCRAFT

Contact your Authorized Ironcraft Dealer  
for all your parts needs



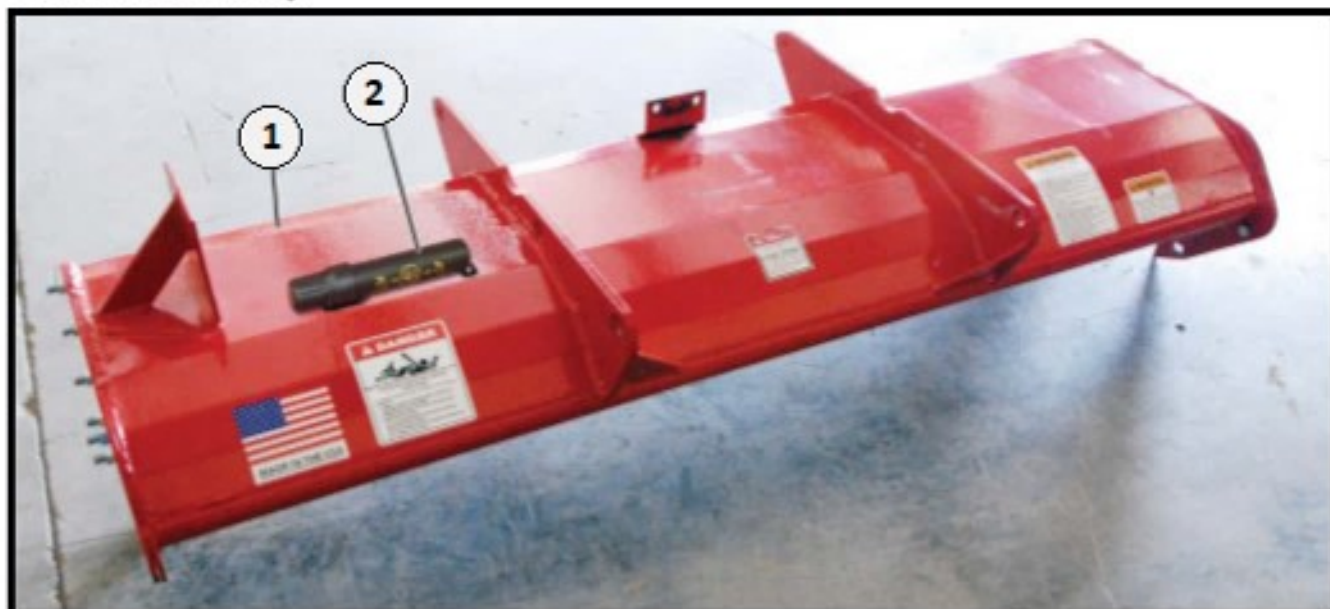
# 2100 SERIES ROTARY TILLER PARTS MANUAL

### 13.1 Hitch Assembly



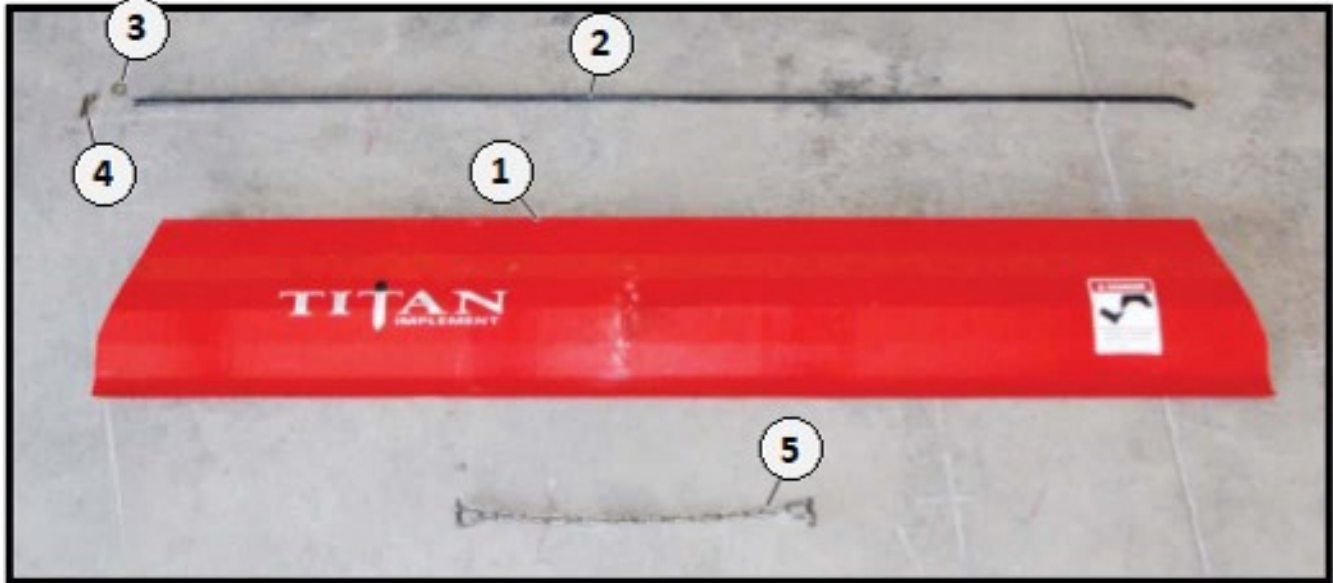
Item	Part #	Description	Qty
1	210001	A-Frame Left Side – (for 4,5 & 6-ft)	1
	210005	A-Frame Left Side – (for 7-ft)	1
2	210002	A-Frame Right Side – (for 4,5 & 6-ft)	1
	210006	A-Frame Right Side – (for 7-ft)	1
3	110032	Lift Pin CAT-I with Lockwasher & Nut - (for 4,5 & 6-ft)	2
	450006	Step Down Pin – (for 7-ft)	2
	310032	Lynch Pin 3/8"	2
4	110027	Bolt & Locknut Kit 3/4"x 4-1/2" – for Top A-Frame	2
5	110015	Bolt & Locknut Kit 5/8"x 2" – for Back Brace	2
6	110028	Spacer 2-3/4" – for A-Frame	1
7	110030	Spacer 2" – for Back Brace	1
8	210003	Back Brace 3/8"x 2" x 32"	2

## 13.2 Frame Assembly



Item	Part #	Description	Qty
1	210050	4-ft Frame Only with Decals - BLUE	1
	210051	4-ft Frame Only with Decals - GREEN	
	210052	4-ft Frame Only with Decals - GREY	
	210053	4-ft Frame Only with Decals - ORANGE	
	210054	4-ft Frame Only with Decals - RED	
	210055	4-ft Frame Only with Decals - YELLOW	
2	110034	Document Holder with Screws	1
Item	Part #	Description	Qty
1	210056	5-ft Frame Only with Decals - BLUE	1
	210057	5-ft Frame Only with Decals - GREEN	
	210058	5-ft Frame Only with Decals - GREY	
	210059	5-ft Frame Only with Decals - ORANGE	
	210060	5-ft Frame Only with Decals - RED	
	210061	5-ft Frame Only with Decals - YELLOW	
2	110034	Document Holder with Screws	1
Item	Part #	Description	Qty
1	210062	6-ft Frame Only with Decals - BLUE	1
	210063	6-ft Frame Only with Decals - GREEN	
	210064	6-ft Frame Only with Decals - GREY	
	210065	6-ft Frame Only with Decals - ORANGE	
	210066	6-ft Frame Only with Decals - RED	
	210067	6-ft Frame Only with Decals - YELLOW	
2	110034	Document Holder with Screws	1
Item	Part #	Description	Qty
1	210068	7-ft Frame Only with Decals - BLUE	1
	210069	7-ft Frame Only with Decals - GREEN	
	210070	7-ft Frame Only with Decals - GREY	
	210071	7-ft Frame Only with Decals - ORANGE	
	210072	7-ft Frame Only with Decals - RED	
	210073	7-ft Frame Only with Decals - YELLOW	
2	110034	Document Holder with Screws	1

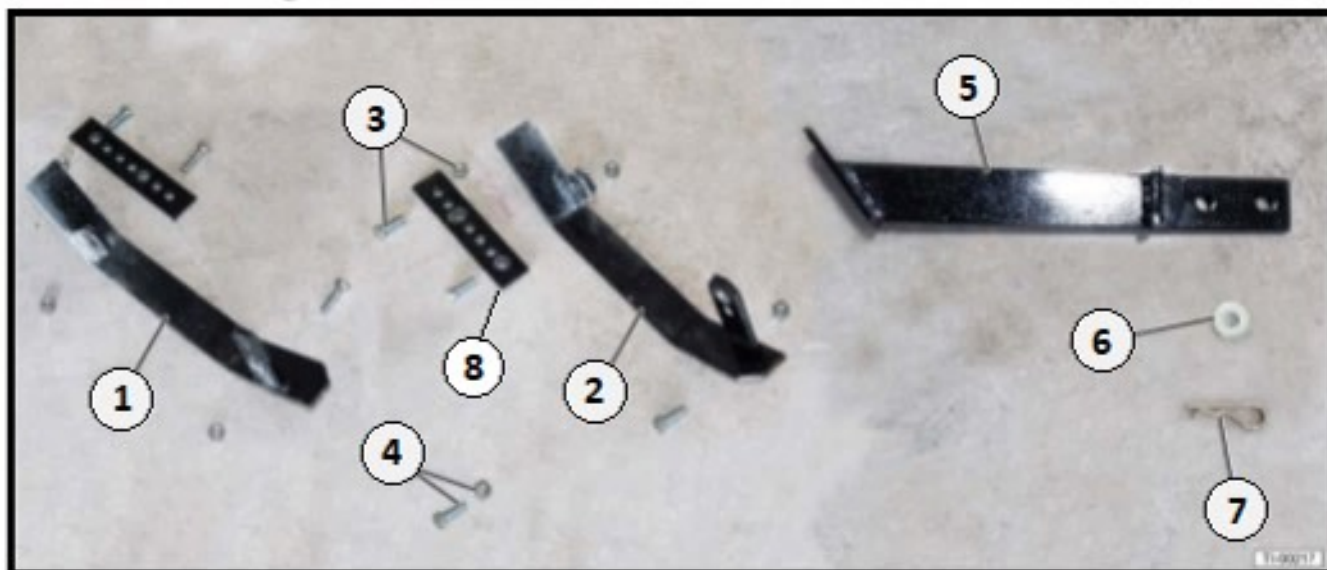
### 13.3 Rear Deflector



Item	4-ft Part #	5-ft Part#	6-ft Part#	7-ft Part #	Description	Qty
1	210074	210080	210086	210092	Deflector Gate with Decals - BLUE	1
	210075	210081	210087	210093	Deflector Gate with Decals - GREEN	
	210076	210082	210088	210094	Deflector Gate with Decals - GREY	
	210077	210083	210089	210095	Deflector Gate with Decals - ORANGE	
	210078	210084	210090	210096	Deflector Gate with Decals - RED	
	210079	210085	210091	210097	Deflector Gate with Decals - YELLOW	
2	210011	210012	210013	210014	Deflector Gate Rod	1
3	210015	210015	210015	210015	Washer – for Hinge Rod	1
4	210016	210016	210016	210016	Retainer Clip	1
5	210017	210017	210017	210017	Chain & Shackle Kit	1

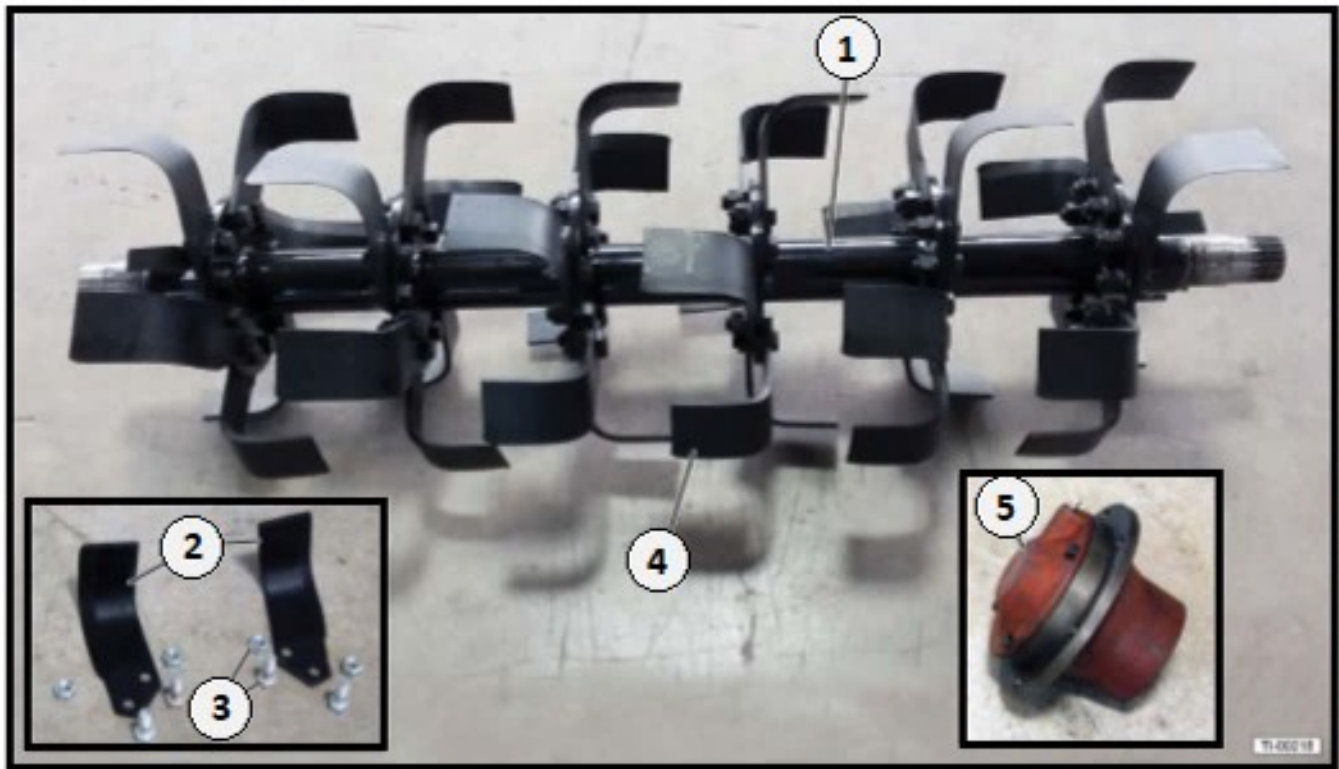


## Skid Shoes & Parking Stand



Item	Part #	Description	Qty
1	210018	Skid Shoe – LH with Bolts	1
2	210019	Skid Shoe – RH with Bolts	1
3	210020	Bolt Kit 1/2" x 1-3/4" – for Skid Shoe	6
4	210021	Bolt Kit 1/2" x 2" – for Skid Shoe	5
5	210032	Parking Stand	1
6	210015	Flatwasher 1/2"	1
7	210016	Hairpin Retainer	1
8	210098	Adjuster Plate	2

### 13.5 Rotor Shaft & Tines

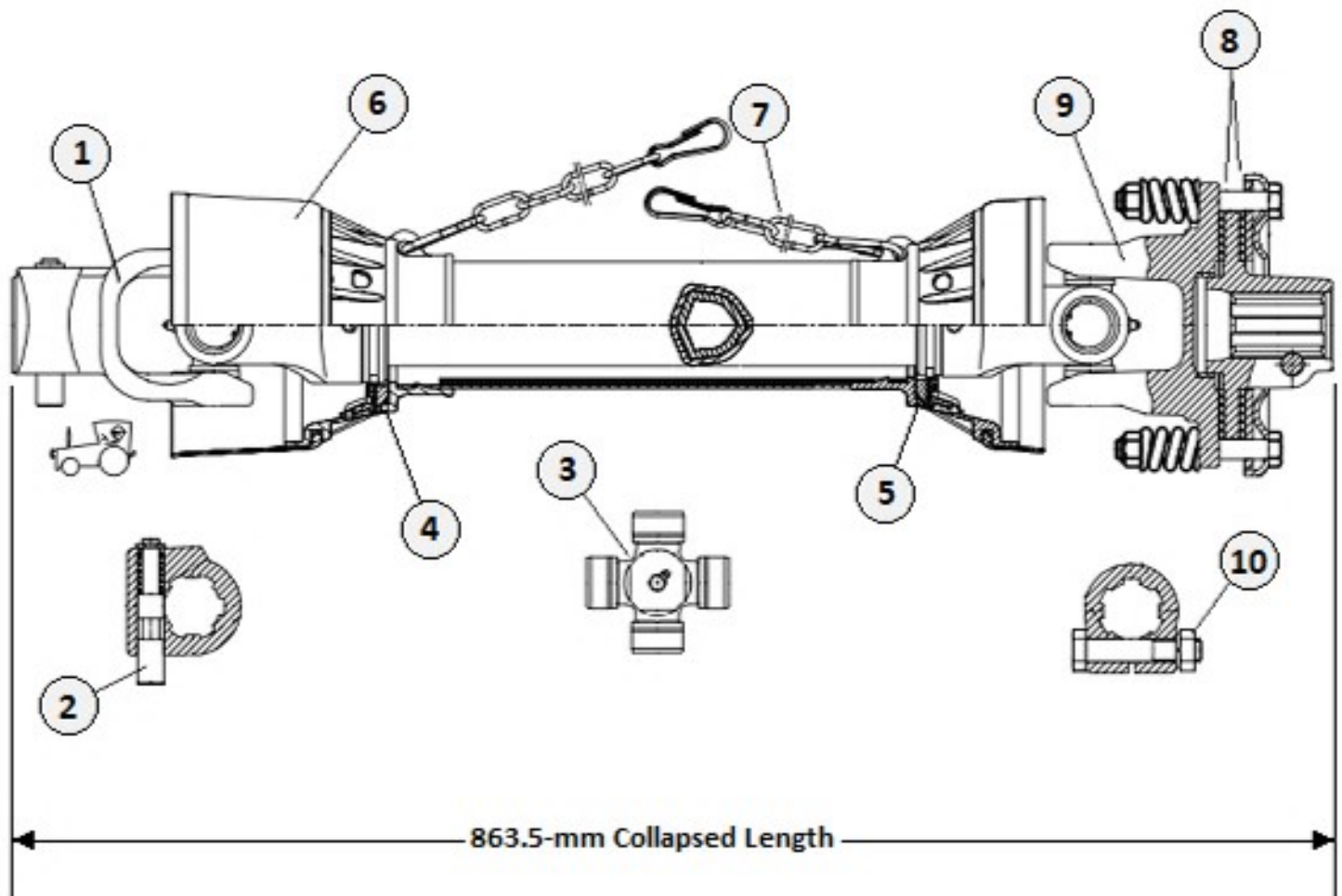


Item	Part #	Description	Qty
1	210259	4-ft Rotor Shaft without Tines	1
	210260	5-ft Rotor Shaft without Tines	
	210261	6-ft Rotor Shaft without Tines	
	210262	7-ft Rotor Shaft without Tines	
2	210022	Tine Set (1-LH & 1-RH) with Bolts	1
3	210023	Bolt & Nut Kit 9/16" x 1-1/4" NF	A/R
4	210024	4-ft Complete Tine Set (36-Tines) with Bolts	1
	210025	5-ft Complete Tine Set (42-Tines) with Bolts	
	210026	6-ft Complete Tine Set (54-Tines) with Bolts	
	210027	7-ft Complete Tine Set (66-Tines) with Bolts	
5	210028	Hub Assembly (Left or Right)	2

A/R = As Required

# SLIPCLUTCH DRIVELINE COMPONENTS

## FITS 4' - 5' - 6' TILLER

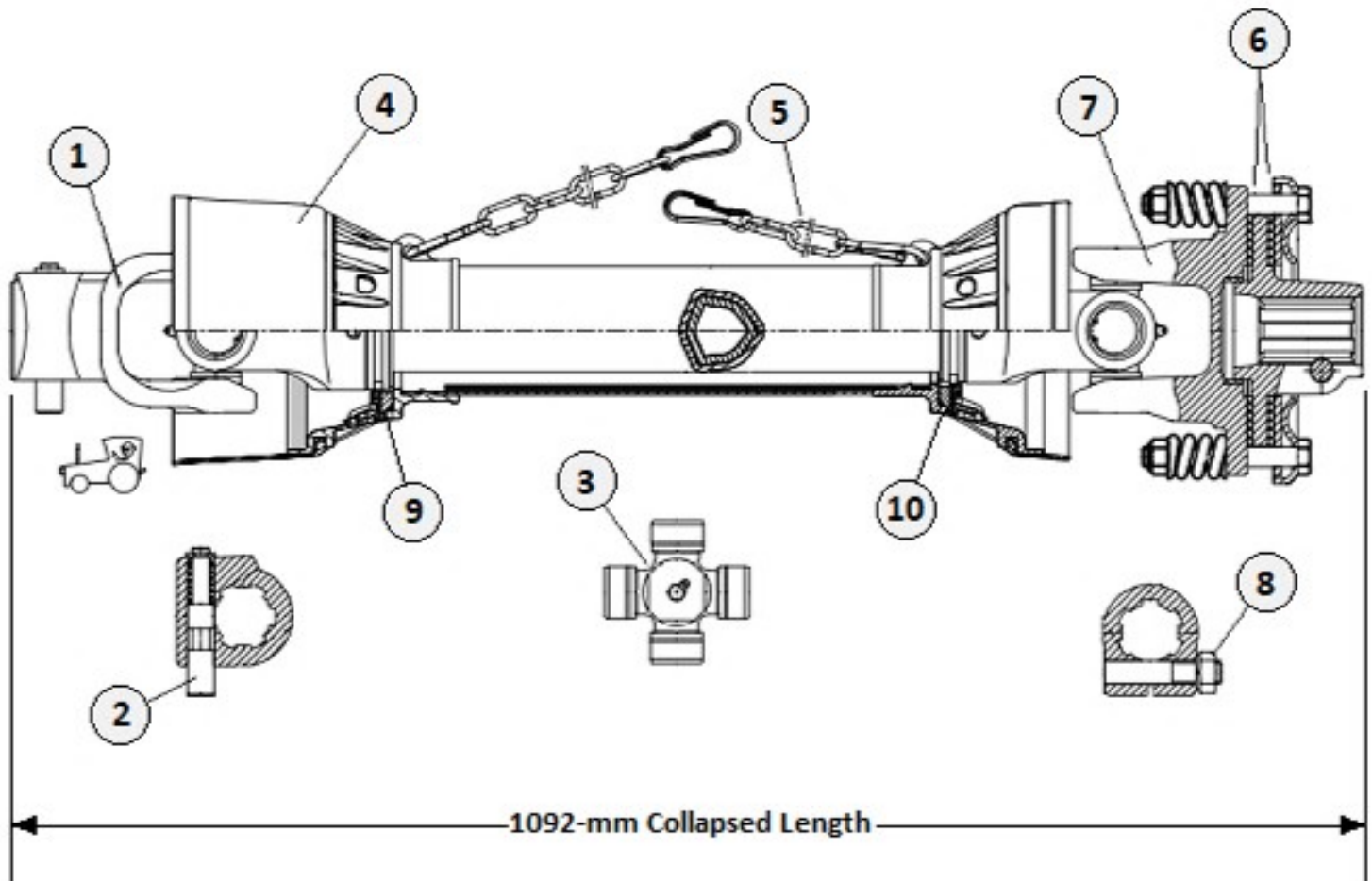


Item	Part #	Description	Qty
1	552000	Tractor Yoke 1-3/8" 6-Spline	1
2	552001	Push Pin Kit	1
3	552003	Cross Kit 27 x 74.6	1
4	552008	Outer Plastic Shield Bearing	1
5	552009	Inner Plastic Shield Bearing	1
6	*552002	Complete Safety Shield	1
7	552005	Safety Chain	2
8	552010	Clutch Lining (2-Pack)	1
9	552011	Complete Slipclutch	1
10	552012	Bolt M12 x 70 W/Nut	1
<b>*210046</b>		<b>Complete Driveline with Slipclutch</b>	

\*May need to cut to length to fit certain 4 & 5-ft applications

# SLIPCLUTCH DRIVELINE COMPONENTS

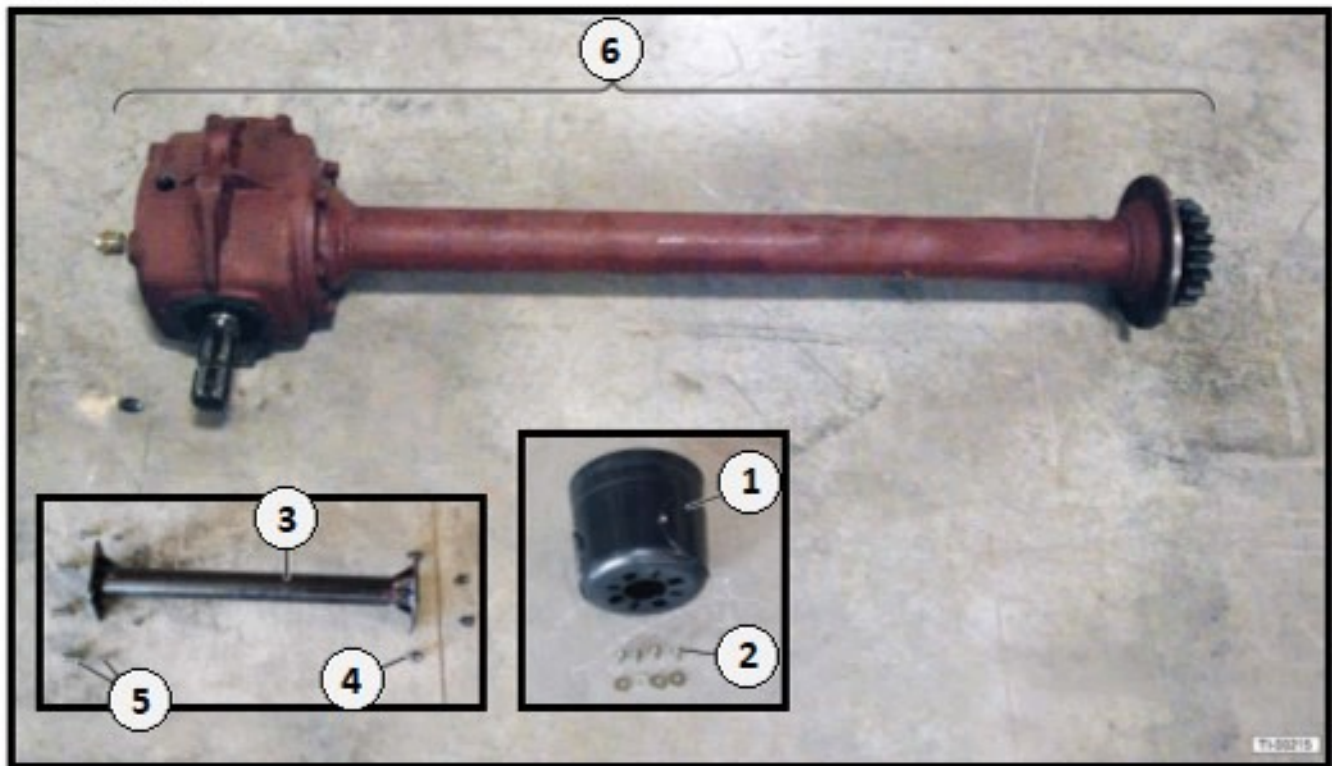
FITS 7-FT TILLER



Item	Part #	Description	Qty
1	552000	Tractor Yoke 1-3/8" 6-Spline	1
2	552001	Push Pin Kit	1
3	552003	Cross Kit 27 x 74.6	1
4	552030	Complete Safety Shield	1
5	552005	Safety Chain	2
6	552031	Clutch Lining (2-Pack)	1
7	552032	Complete Slipclutch	1
8	552033	Eccentric Pin with Nut	1
9	552034	Outer Plastic Shield Bearing	1
10	552035	Inner Plastic Shield Bearing	1
<b>120012</b>		<b>Complete Driveline with Slipclutch</b>	

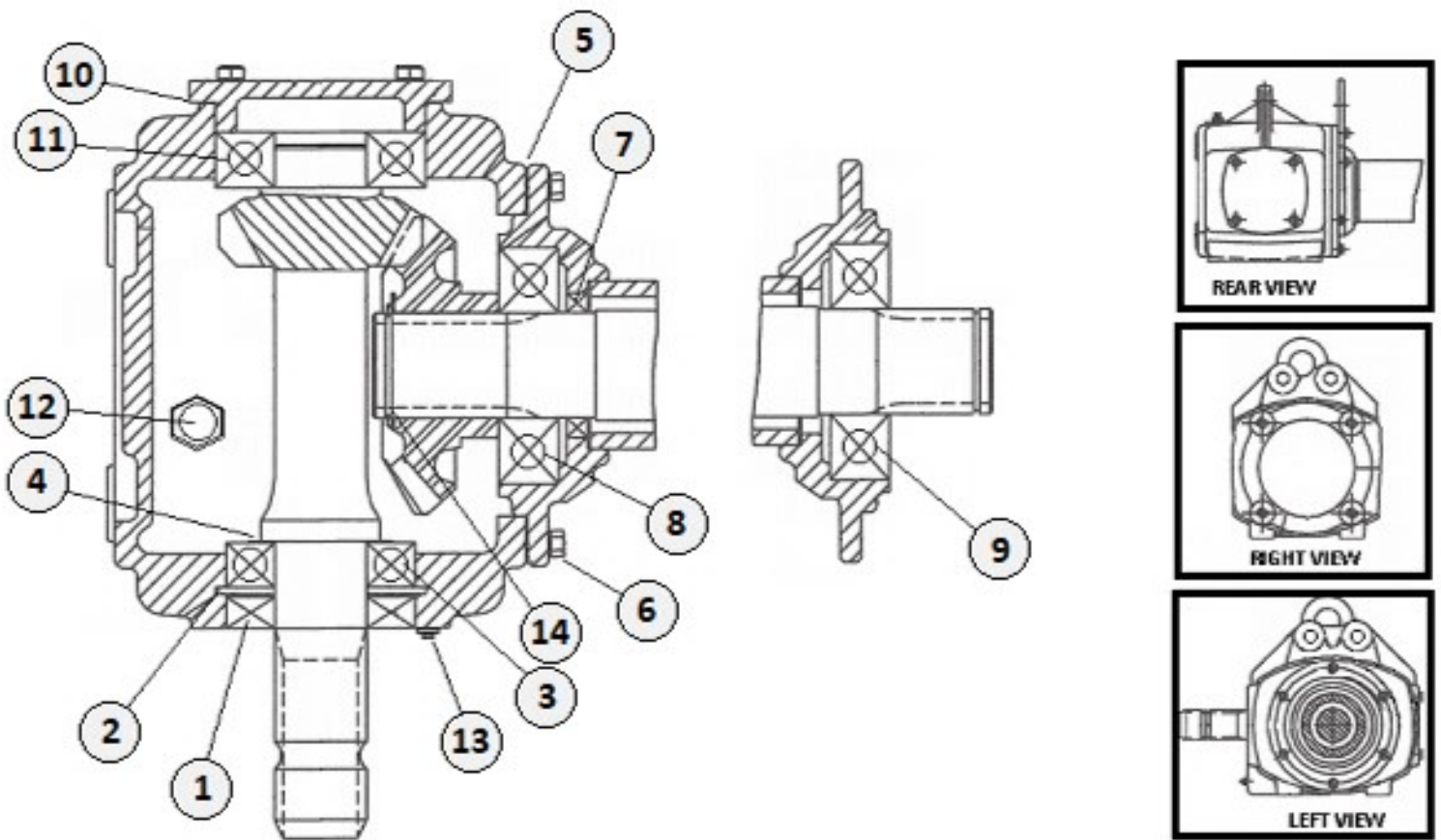


### 13.7 Gearbox



Item	Part #	Description	Qty
1	110005	Gearbox Shield – for 4,5 & 6-ft	1
	120001	Gearbox Shield – for 7-ft	
2	110006	Bolt & Washer Kit 5/16" x 1/2" – for G/Box Shield	1
3	210251	4-ft Support Tube – Right Side	1
	210252	5-ft Support Tube – Right Side	
	210253	6-ft Support Tube – Right Side	
	210254	7-ft Support Tube – Right Side	
4	210007	Bolt & Locknut Kit M10 x 30mm – Tube to G/Box	4
5	510008	Bolt & Locknut Kit 3/8" x 1-1/4" – for Support Tube	4
6	210040	4-ft Top Gearbox Assembly	1
	210041	5-ft Top Gearbox Assembly	
	210042	6-ft Top Gearbox Assembly	
	210043	7-ft Top Gearbox Assembly	

# TILLER TOP GEARBOX COMPONENTS



Item	Part #	Description	Qty
1	210249	Input Seal – Double Lip	1
2	210201	Retaining Ring 72mm	1
3	210202	Bearing 6207	1
4	210203	Input Shim Kit (0.3 - 0.5 - 0.81.0mm)	A/R
5	210204	Output Gasket (Can Sub RTV Sealant)	A/R
6	210234	Cap Screw M10 x 25	8
7	210206	Output Seal – Double Lip	1
8	210207	Bearing 6208	1
9	210208	Sealed Bearing 6308	1
10	210209	Input Gasket (Can Sub RTV Sealant)	A/R
11	210210	Bearing 6307	1
12	210211	Pressure Relief Plug 1/2"-14NPT	1
13	210212	Sq. Head Pipe Plug 1/4"-18NPT	1
14	210213	Retaining Ring 40mm	1
	<b>210040</b>	<b>4-ft Top Gearbox Assembly 500mm</b>	
	<b>210041</b>	<b>5-ft Top Gearbox Assembly 700mm</b>	
	<b>210042</b>	<b>6-ft Top Gearbox Assembly 900mm</b>	
	<b>210043</b>	<b>7-ft Top Gearbox Assembly 1100mm</b>	

A/R = As Required

# TILLER SIDE GEARBOX COMPONENTS

Used on:  
4 -5 -6 & 7-FT Models

Item	Part #	Description	Qty
1	210205	Side Gearcase Cover	1
2	210218	Self-Aligning Bearing 1310	2
3	210219	Self-Aligning Double Row Bearing 3210C	1
4	210222	Double Lip Seal 55 x 75 x 8	4
5	210236	Cap Screw M10 x 20	6
6	210234	Cap Screw M10 x 25	8
7	210211	Bolt & Washer Kit M8 x 16 – for Side Cover	12
8	210238	Cap Screw M12 x 25	3
9	210240	Lockwasher M12	3
10	210241	Heavy Washer	3
11	210242	Sq. Head Pipe Plug 1/4"-14NPT	1
12	210243	Pressure Relief Plug 1/2"-14NPT	1
13	*210028	Hub Assembly (LH & RH are Same)	1
14	210247	Retaining Ring 90mm	1
15	210250	Gasket – for Side Gearbox Cover	1
16	210230	Bolt M16 x 16mm – for Hub Cap	4
17	210031	Zerk Fitting	1
18	210021	Bolt 1/2" x 2" – for G/Box Mounting	7
<b>210044</b>		<b>Side Gearcase Sub-Assembly</b>	

\*Hub sold complete only with cap  
(Remove cap for gearbox side installation)

