

IRONCRAFT

Contact your Authorized Ironcraft Dealer
for all your parts needs

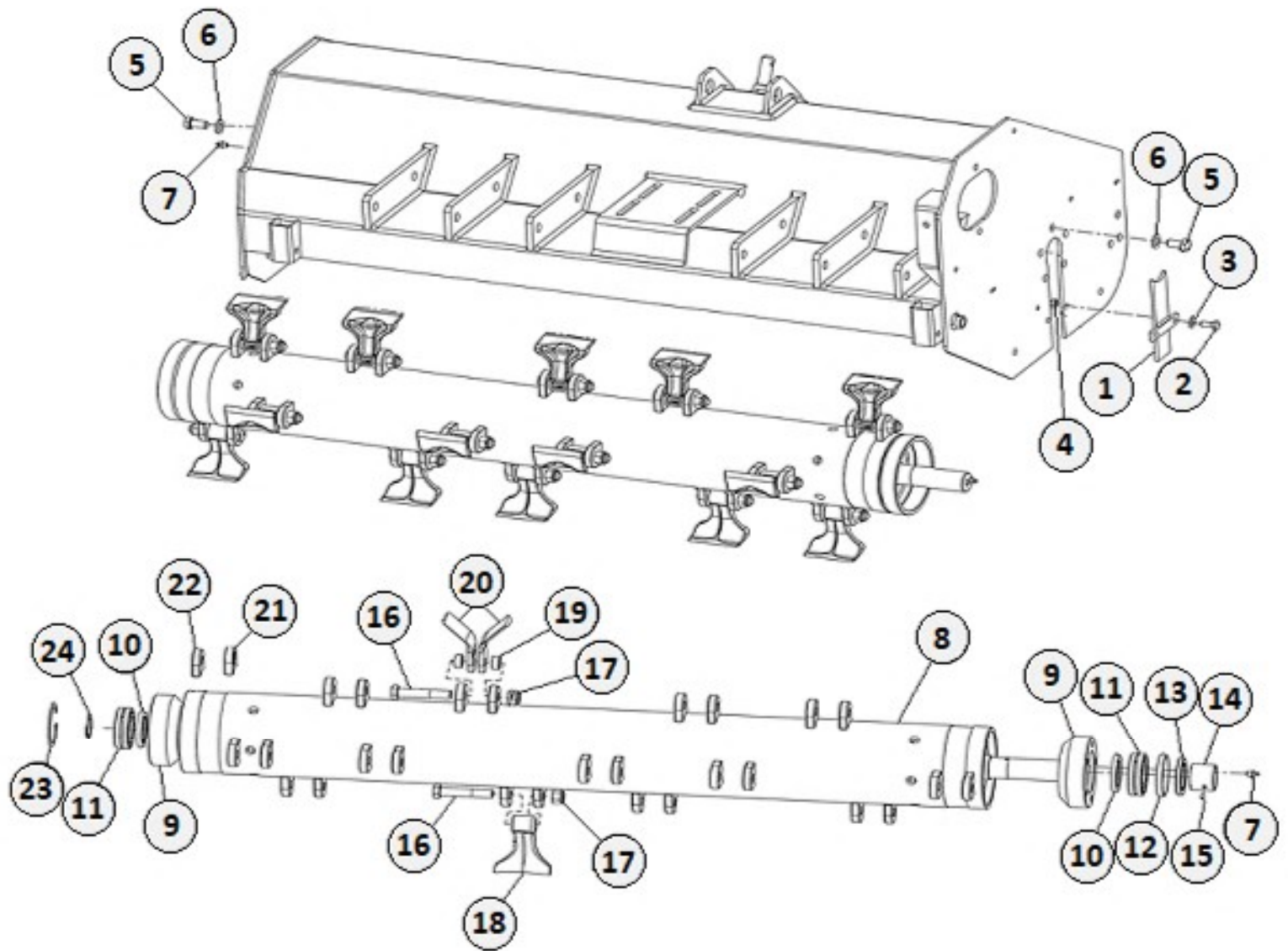


FMH SERIES FLAIL MOWER PARTS MANUAL

Specifications

FMH Series					
Overall dimensions	mm	1770x850x1130	1920x850x1130	2220x850x1130	2370x850x1130
Working width	mm	1600	1750	2050	2200
	inches	63"	69"	80"	86"
Recommended tractor HP	HP / Kw	30-60 / 22-44	30-60 / 22-44	30-60 / 22-44	50-60 / 43-51
3-point hitch type	-	Cat. I/II	Cat. I/II	Cat. I/II	Cat. I/II
Number of blades	N.	40	44	52	56
Number of hammers	N.	20	22	26	28
PTO input speed	rpm	540	540	540	540
Rotor speed	rpm	2083	2083	2083	2083
Side transmission	-	4 belts	4 belts	4 belts	4 belts
		BX type	BX type	BX type	BX type
Side shift (max)	mm / Inch	300 / 11.81	300 / 11.81	300 / 11.81	300 / 11.81
Rotor diameter	inches	6.25"	6.25"	6.25"	6.25"
	mm	159	159	159	159
Approx Weight (driveline not included)	kg	412	434	482	506

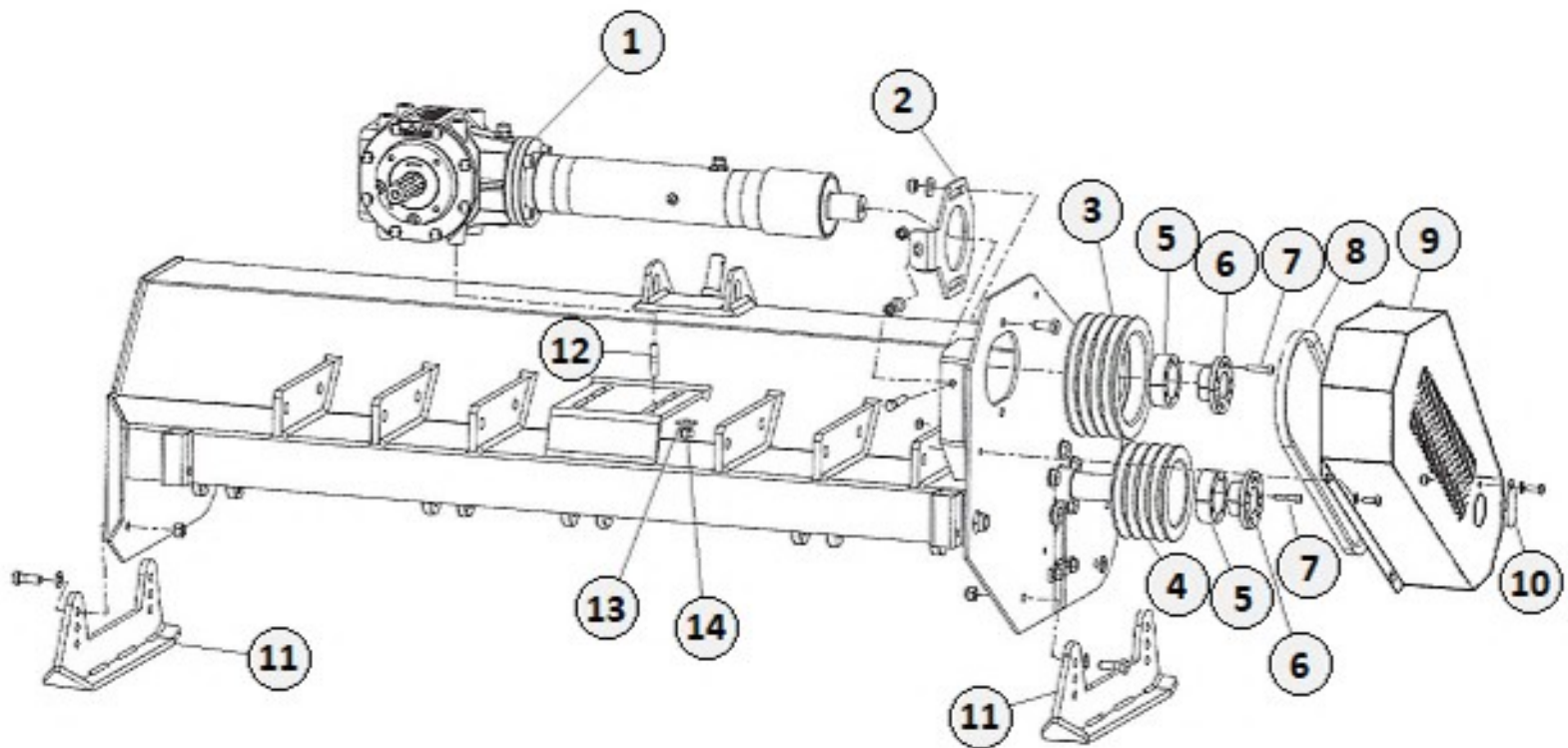
MAIN FRAME / ROTOR COMPONENTS



MAIN FRAME & ROTOR ASSEMBLY

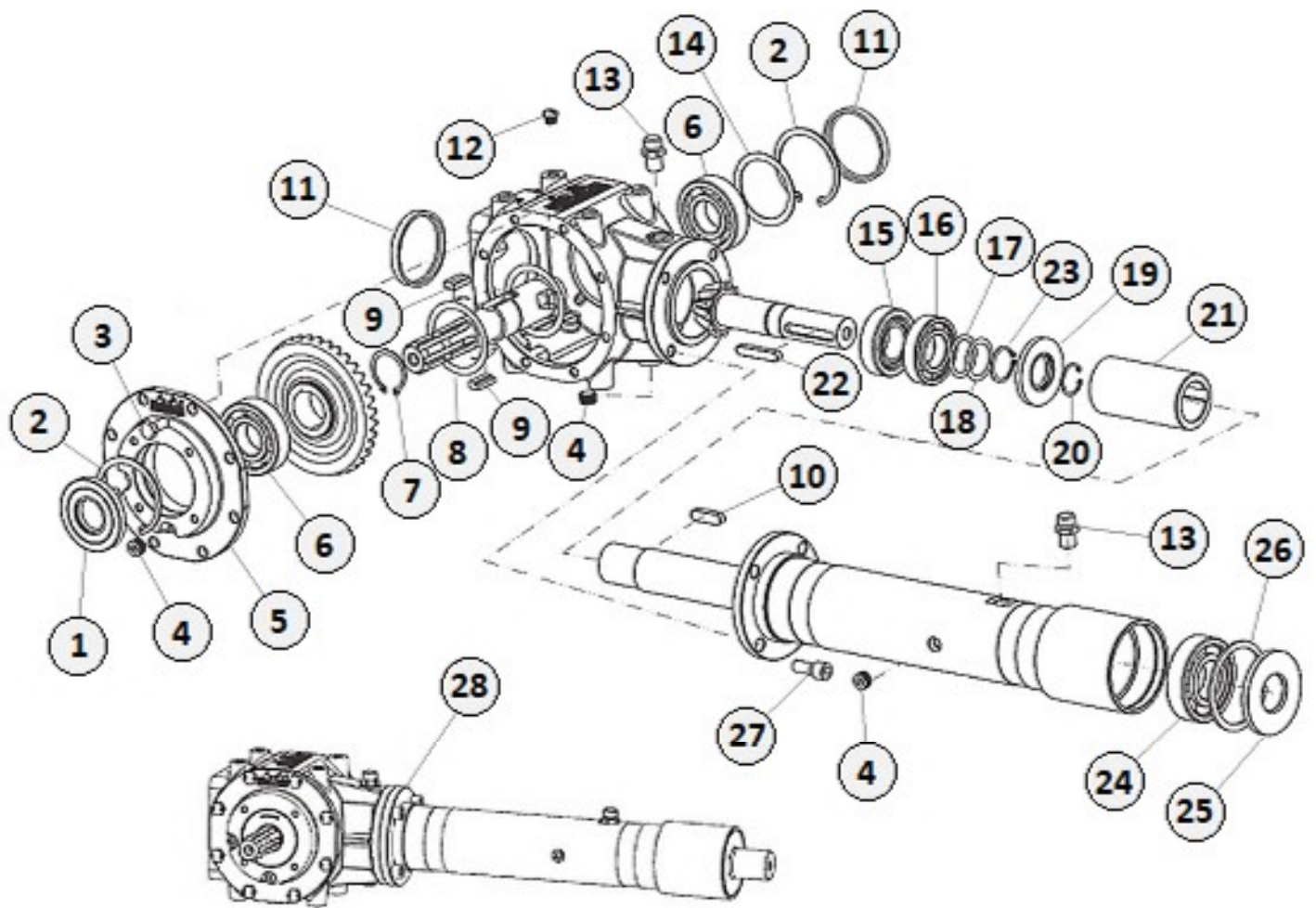
	PART #	DESCRIPTION	Qty
1	SK17142	CLOSING PLATE	1
2	SK17270	HEX BOLT M10 X 1.50 X 25 (8.8)	2
3	SK8078	FLAT WASHER M10	2
4	SK17272	HEX NUT M10 X 1.50	2
5	SK17280	HEX BOLT M14 X 2 X 30 (8.8)	10
6	SK1272	FLAT WASHER M14	10
7	SK20272	GREASE ZERK M10 X 1.50	2
8	SK17145	ROTOR WELDMENT (FMH-160H)	1
	SK17146	ROTOR WELDMENT (FMH-175H)	1
	SK17147	ROTOR WELDMENT (FMH-205H)	1
	SK17148	ROTOR WELDMENT (FMH-220H)	1
9	SK17149	ROTOR HUB	2
10	SK17150	OIL SEAL 47 X 70 X 8	2
11	SK17151	BEARING 22208	2
12	SK17152	SEAL RING	1
13	SK17153	OIL SEAL 50 X 72 X 8	1
14	SK17154	PULLEY SPACER	1
15	SK12090	GRUB SCREW M6 X 1 X 10	1
16	SK17279	HEX BOLT M16 X 2 X 90 (10.9)	A/R
17	SK1231	NYLOCK NUT M16 X 2	A/R
18	SK17319	HAMMER BLADE	A/R
	SK17310	SET OF 20 HAMMER BLADES (FMH-160H)	1
	SK17311	SET OF 22 HAMMER BLADES (FMH-175H)	1
	SK17312	SET OF 26 HAMMER BLADES (FMH-205H)	1
	SK17313	SET OF 28 HAMMER BLADES (FMH-220H)	1
19	SK17229	BLADE SPACER	A/R
20	SK17420	Y BLADE	A/R
	SK17413	SET OF 40 Y BLADES (FMH-160H)	1
	SK17414	SET OF 44 Y BLADES (FMH-175H)	1
	SK17415	SET OF 52 Y BLADES (FMH-205H)	1
	SK17416	SET OF 56 Y BLADES (FMH-220H)	1
21	SK17410	HEX HOLDER	A/R
22	SK17411	ROUND HOLDER	A/R
23	SK1130	CIRCLIP INTERNAL 80mm	1
24	SK8027	CIRCLIP EXTERNAL 40mm	1

TRANSMISSION & SKID PARTS



	PART #	DESCRIPTION	Qty
1	SK17370	GEARBOX ASSEMBLY (FMH-160)	1
	SK17369	GEARBOX ASSEMBLY (FMH-175)	1
	SK17368	GEARBOX ASSEMBLY (FMH-205)	1
	SK17367	GEARBOX ASSEMBLY (FMH-220)	1
2	SK17300	BELT TENSIONING PLATE	1
3	SK17161	PULLEY-PITCH DIA 180 – 4 GROOVES	1
	SK17405	PULLEY-PITCH DIA 180 – 3 GROOVES	1
4	SK17162	PULLEY-PITCH DIA 140 – 4 GROOVES	1
	SK17404	PULLEY-PITCH DIA 140 – 3 GROOVES	1
5	SK17037	OUTER CLAMP	2
6	SK17036	INNER CLAMP	2
7	SK17035	ALLEN BOLT M8 X 1.25 X 35 (8.8)	14
8	SK17698	SET OF V-BELTS BX47 (4NOS)	3
	SK17699	SET OF V-BELTS BX47 (3 NOS)	4
9	SK17164	BELT GUARD – 4 GROOVE	1
	SK17403	BELT GUARD – 3 GROOVE	1
10	SK17165	GREASE ZERK COVER PLATE	1
11	SK17166	SKID SHOE WELDMENT	2
12	SK7018	STUB M12 X 1.75 X 50	4
13	SK17269	FLATWASHER 30 X 12 X 3	4
14	SK1209	NYLOCK NUT M12 X 1.75	4

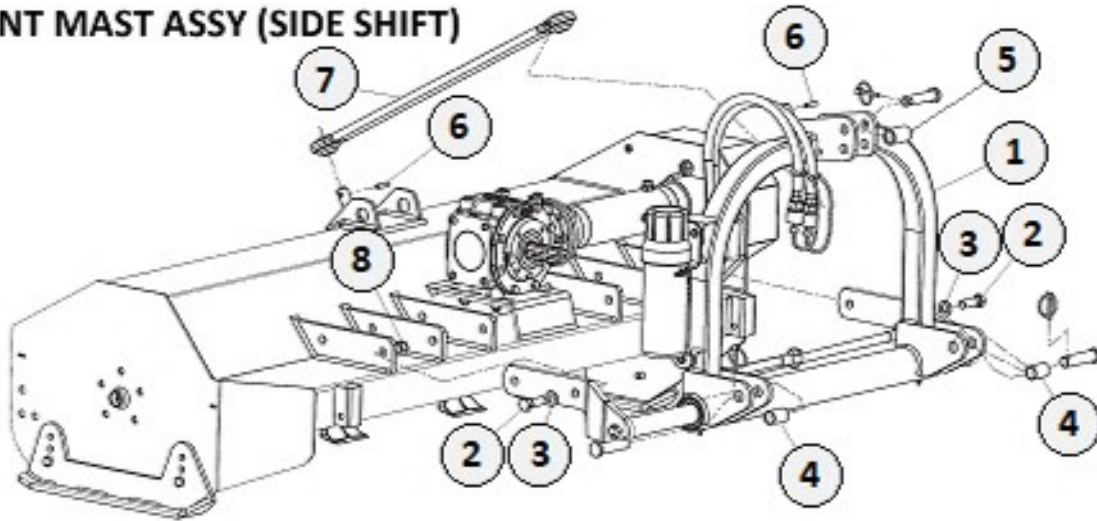
GEARBOX COMPONENTS



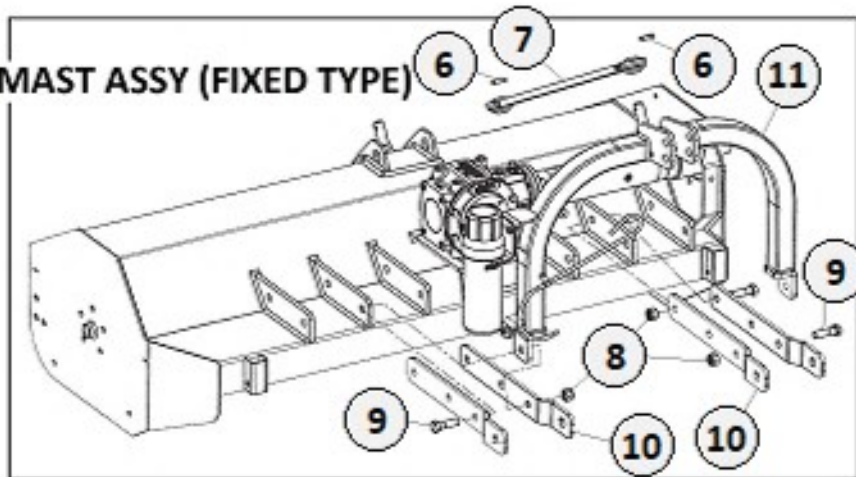
GEARBOX COMPONENTS

	PART #	DESCRIPTION	Qty
1	SK17329	OIL SEAL 35 X 80 X 10	1
2	SK1130	CIRCLIP INTERNAL 80mm	2
3	SK17270	HEX BOLT M10 X 1.50 X 25 (8.8)	8
4	SK17258	CONICAL HEAD BOLT 3/8"	3
5	SK17002	GEARBOX FLANGE	1
6	SK1131	BEARING 6307	2
7	SK8027	CIRCLIP EXTERNAL 40mm	1
8	SK17076	LEAF SPRING	2
9	SK17230	RATCHET 28mm	2
10	SK11076	PARALLEL KEY 12 X 8 X 40	1
11	SK17633	OIL SEAL 80 X 10	2
12	SK17675	PLASTIC CAP M12 X 1.75	8
13	SK14311	BREATHER PLUG 3/8"	2
14	SK17167	SHIM 80 X 65 X 0.5	4
15	SK17054	BEARING 32207B	1
16	SK10143	BEARING 6207	1
17	SK1425	SHIM 45 X 35 X 1.0	1
18	SK1424	SHIM 44.5 X 35.7 X 0.50	2
19	SK14309	OIL SEAL 35 X 72 X 8	1
20	SK17083	CIRCLIP INTERNAL 32mm	1
21	SK17025	SHAFT CONNECTOR	1
22	SK11077	PARALLEL KEY 10 X 8 X 56	1
23	SK6024	CIRCLIP EXTERNAL 35mm	1
24	SK8036	BEARING 6308	1
25	SK17026	OIL SEAL 90 X 40 X 8	1
26	SK3027	CIRCLIP INTERNAL 90mm	1
27	SK17027	ALLEN BOLT M12 X 1.75 X 30 (8.8)	4
28	SK17370	GEARBOX ASSEMBLY (FMH-160H)	1
	SK17369	GEARBOX ASSEMBLY (FMH-175H)	1
	SK17368	GEARBOX ASSEMBLY (FMH-205H)	1
	SK17367	GEARBOX ASSEMBLY (FMH-220H)	1

3-POINT MAST ASSY (SIDE SHIFT)

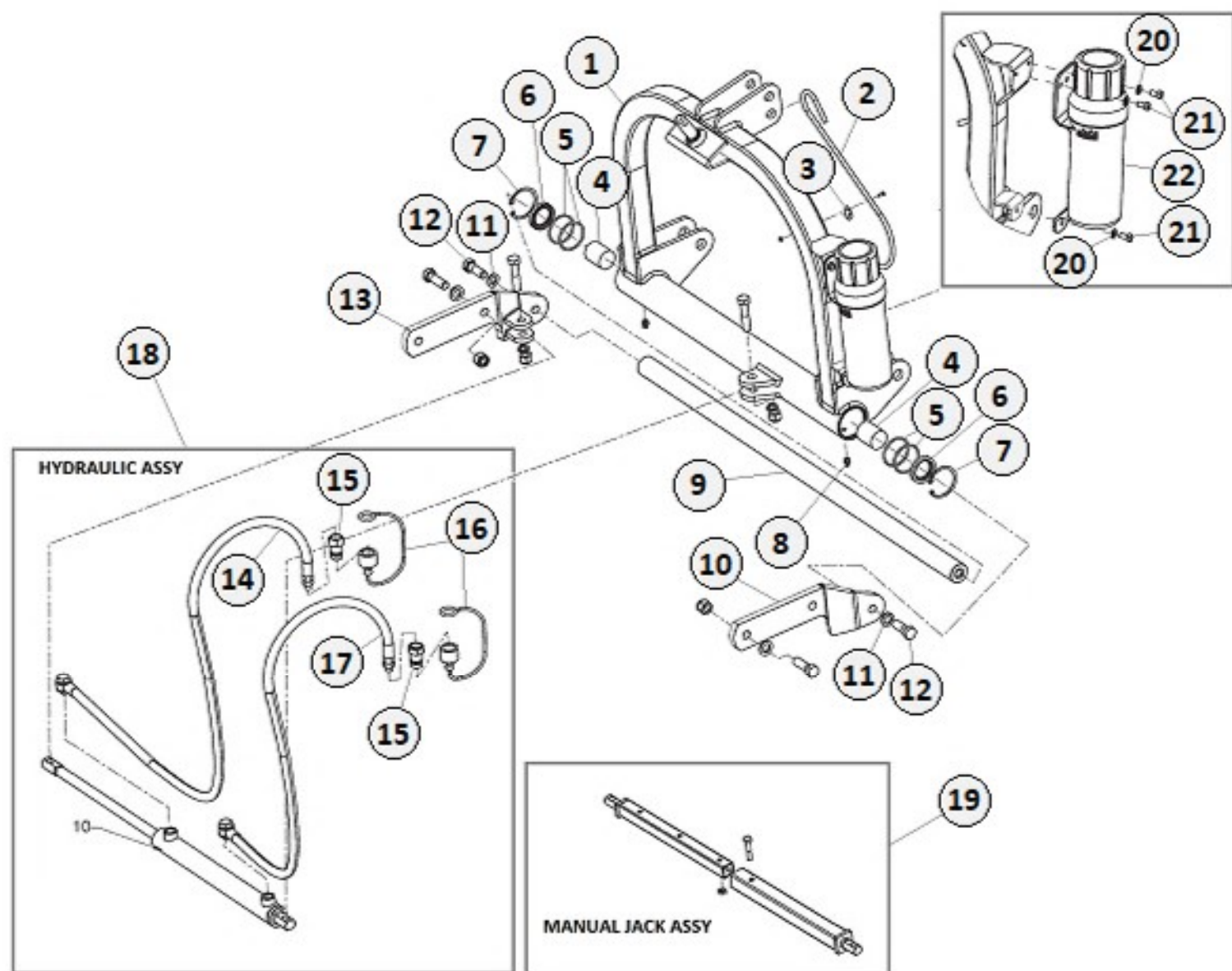


3-POINT MAST ASSY (FIXED TYPE)



Item	Part #	Description	Qty
1	SK17180	MAST (Hydraulic)	1
2	SK17278	HEX BOLT M16 X 2 X 50 (8.8)	4
3	SK1078	FLATWASHER 16mm	4
4	SK15069	LOWER LINK PIN BUSHING	2
5	SK14086	BUSHING	1
6	SK1191	DOWEL PIN 8 X 36	2
7	SK17190	TIE ROD WITH BALL JOINTS	1
8	SK1231	NYLOCK NUT M16 X 2	4
9	SK18446	HEX BOLT M16 X 2 X 55 (8.8)	4
10	SK17235	LOWER 3-POINT BRACKET	4
11	SK17234	MAST (Fixed Type)	1

3-POINT MAST SIDE SHIFT COMPONENTS

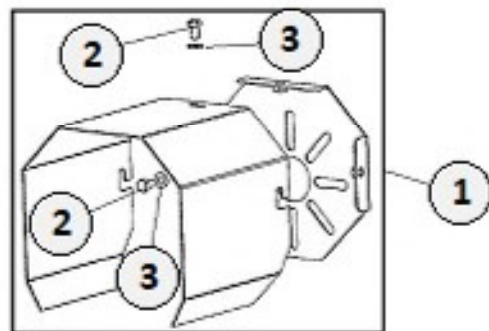
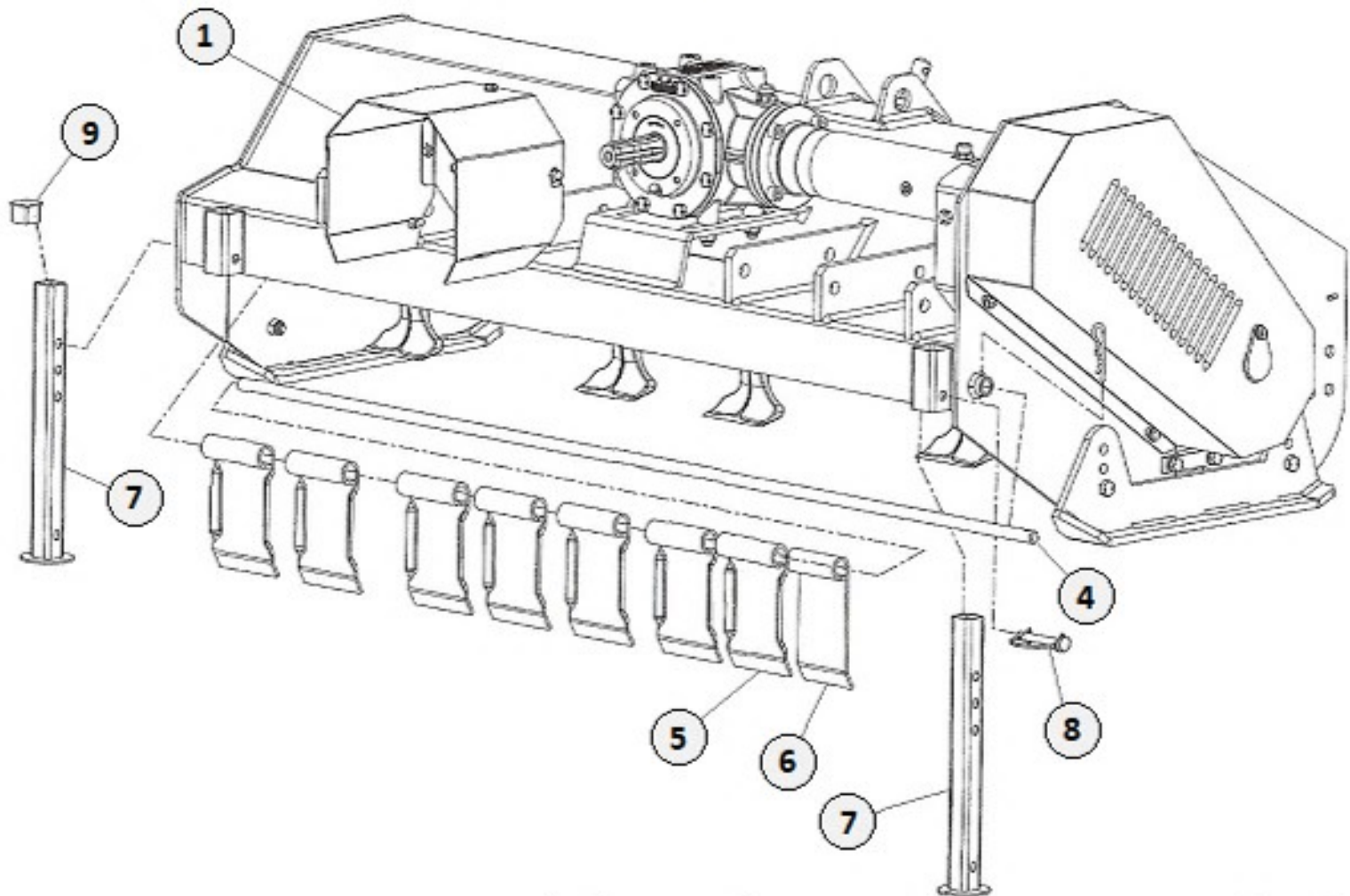


3-POINT MAST SIDE SHIFT COMPONENTS

	PART #	DESCRIPTION	Qty
1	SK17180	HYD. MAST WELDMENT	1
2	SK14341	DRIVELINE HOOK	1
3	SK23147	HOOK HOLDING PLATE	1
4	SK17181	BUSHING DI=40 / DE=60 / L=60	2
5	SK12127	O-RING 52 X 3.5	4
6	SK17182	OIL SEAL 40 X 55 X 7	2
7	SK8120	CIRCLIP INTERNAL 62mm	2
8	SK20148	GREASE ZERK M8 X 1.25	2
9	SK17183	GUIDE BAR 1080mm	1
10	SK17184	LH BRACKET	1
11	SK1308	LOCK WASHER 16mm	2
12	SK17277	HEX BOLT M16 X 1.50 X 45 (8.8)	2
13	SK17185	RH BRACKET	1
14	SK17189	HYRAULIC LINE 2400mm	1
15	SK8290	QUICK COUPLING 1/2" – MALE	2
16	SK18269	QRC PLASTIC CAP 1/2" – FEMALE	2
17	SK17188	HYDRAULIC LINE 2000mm	1
18	SK17268	HYDRAULIC KIT	1
19	SK17266	MANUAL JACK ASSEMBLY	1
20	SK8190	HEX BOLT M8 X 1.25 X 15	3
21	SK8064	FLAT WASHER 8mm	3
22	SK26030	MANUAL BOX COVER	1

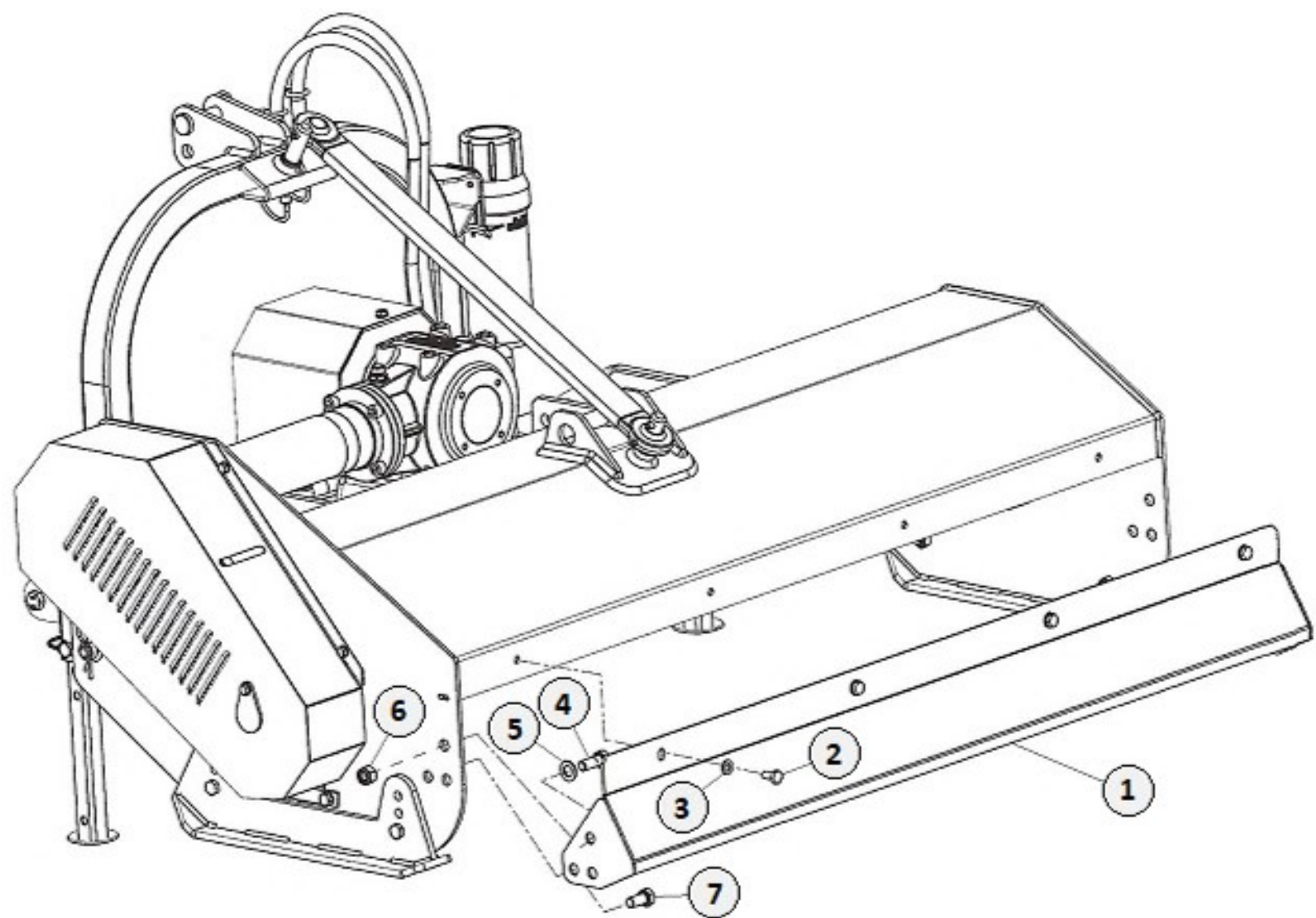
NOTES: _____

SHIELD - FRONT PLATES - PARKING STAND



	PART #	DESCRIPTION	Qty
1	SK1547	PTO SHIELD ASSY	1
2	SK8190	HEX BOLT M8 X 1.25 X 15	7
3	SK8064	FLAT WASHER 8mm	7
4	SK17193	FRONT PLATE ROD (FMH-160H)	1
	SK17194	FRONT PLATE ROD (FMH-175H)	1
	SK17195	FRONT PLATE ROD (FMH-205H)	1
	SK17196	FRONT PLATE ROD (FMH-220H)	1
5	SK17197	FRONT PLATE L=100 (FMH-160H)	14
		FRONT PLATE L=100 (FMH-175H)	16
		FRONT PLATE L=100 (FMH-205H)	19
		FRONT PLATE L=100 (FMH-220H)	20
6	SK17198	FRONT PLATE L=85 (FMH-160H)	1
		FRONT PLATE L=85 (FMH-175H)	0
		FRONT PLATE L=85 (FMH-205H)	0
		FRONT PLATE L=85 (FMH-220H)	1
7	SK14013	STAND	2
8	SK14267	SNAP PIN	2
9	SK14266	PLASTIC CAP 32mm	2

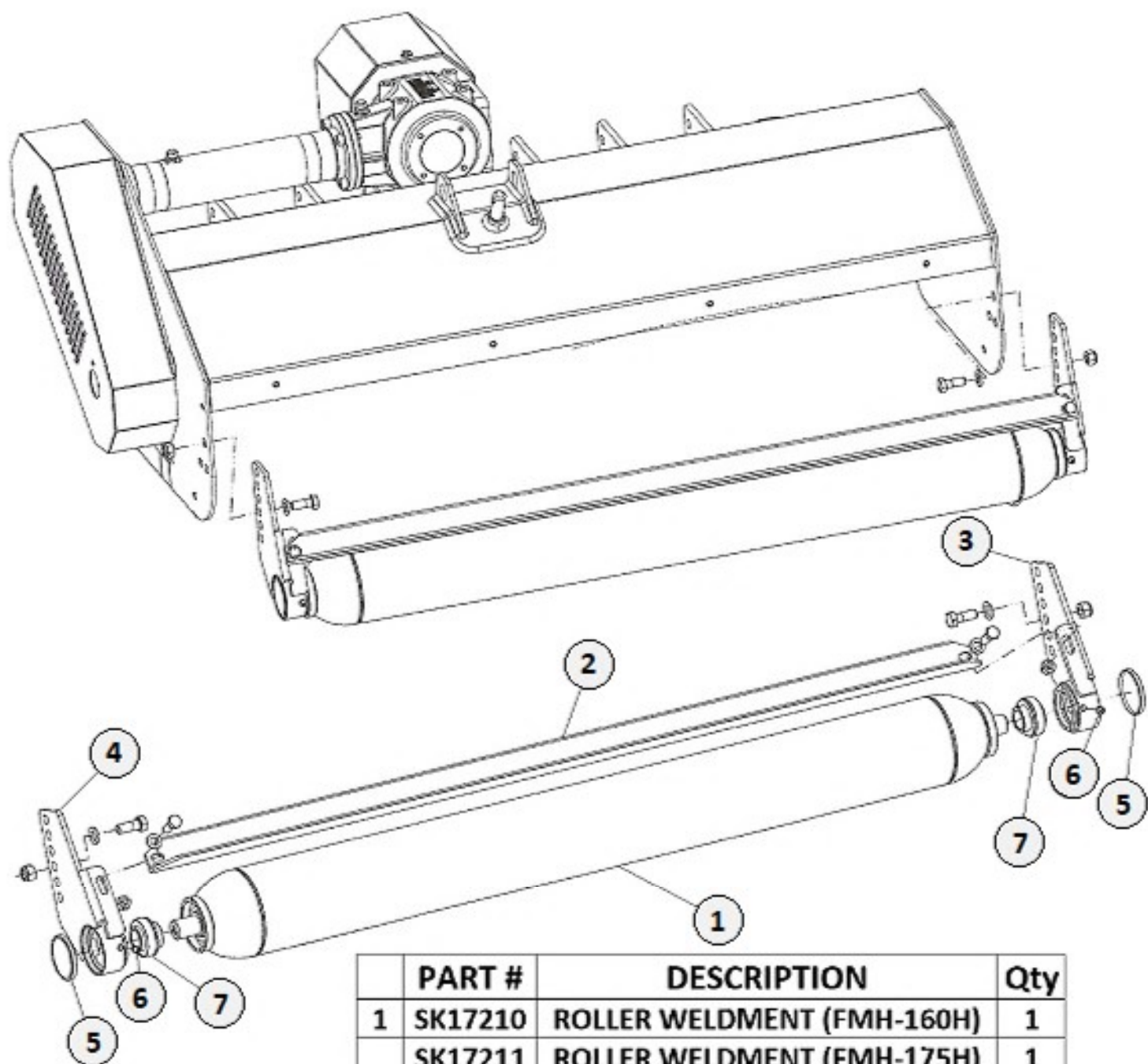
REAR COVER



	PART #	DESCRIPTION	Qty
1	SK17320	REAR COVER (FMH-160H)	1
	SK17321	REAR COVER (FMH-175H)	1
	SK17322	REAR COVER (FMH-205H)	1
	SK17323	REAR COVER (FMH-220H)	1
2	SK17276	HEX BOLT M10 X 1.50 X 20 (8.8)	A/R
3	SK8078	FLAT WASHER 10mm	A/R
4	SK23318	HEX BOLT M14 X 1.50 X 40 (8.8)	4
5	SK1272	FLAT WASHER 14mm	6
6	SK1302	NYLOCK NUT M14 X 1.5	6
7	SK17282	HEX BOLT M14 X 1.50 X 30 (8.8)	2

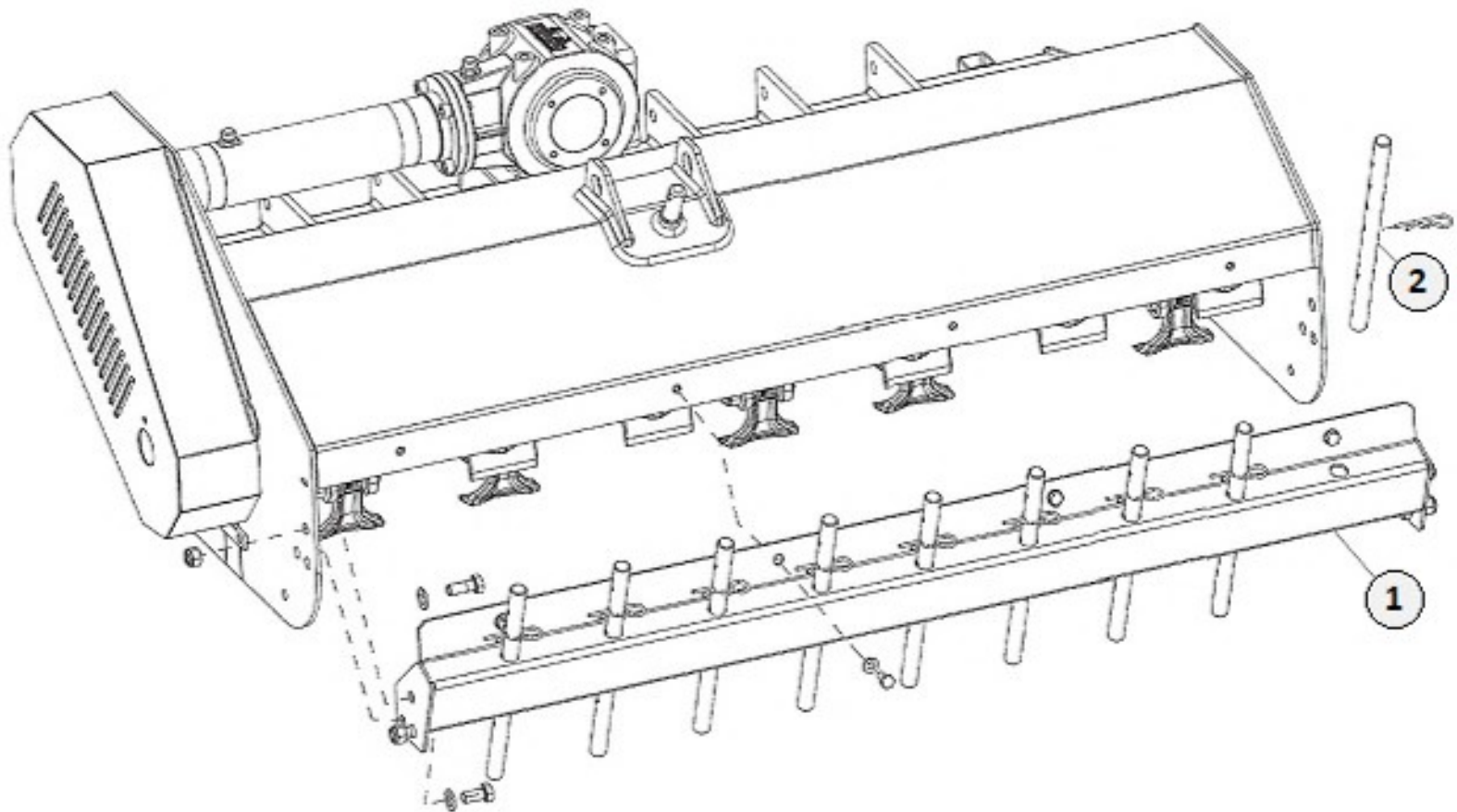
*A/R = As Required

REAR ROLLER



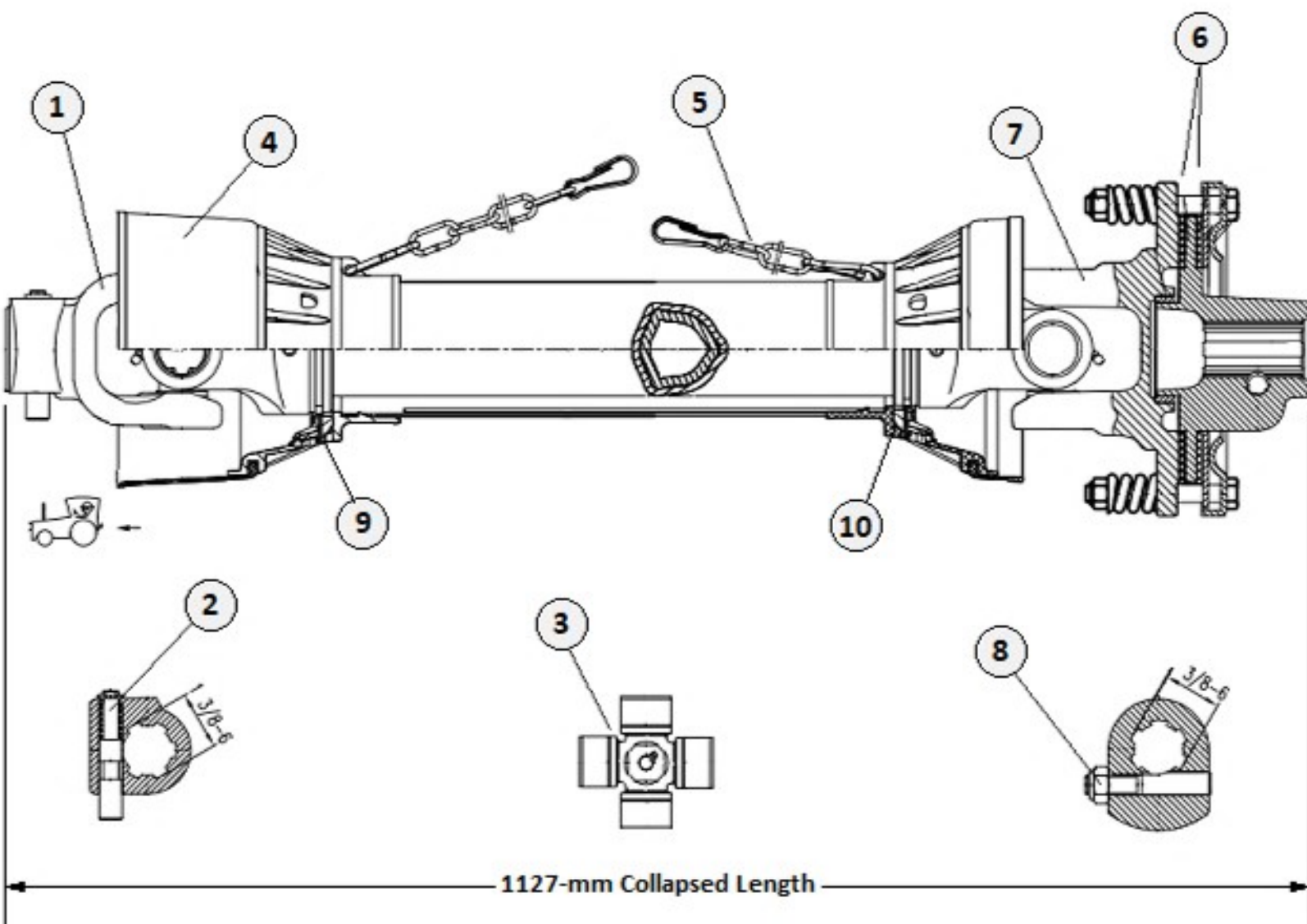
	PART #	DESCRIPTION	Qty
1	SK17210	ROLLER WELDMENT (FMH-160H)	1
	SK17211	ROLLER WELDMENT (FMH-175H)	1
	SK17212	ROLLER WELDMENT (FMH-205H)	1
	SK17213	ROLLER WELDMENT (FMH-220H)	1
2	SK17218	SCRAPER (FMH-160H)	1
	SK17219	SCRAPER (FMH-175H)	1
	SK17220	SCRAPER (FMH-205H)	1
	SK17221	SCRAPER (FMH-220H)	1
3	SK17216	RH ROLLER MOUNT	1
4	SK17215	LH ROLLER MOUNT	1
5	SK14119	OIL SEAL 72 X 8	2
6	SK20272	GREASE ZERK M10 X 1.50	2
7	SK17214	BEARING-UC 206mm	2

REAR COVER WITH RACKS



	PART #	DESCRIPTION	Qty
1	SK17223	RACKS REAR COVER (FMH-160H)	1
	SK17224	RACKS REAR COVER (FMH-175H)	1
	SK17225	RACKS REAR COVER (FMH-205H)	1
	SK17226	RACKS REAR COVER (FMH-220H)	1
2	SK17227	RACK D=22 X L=350 (FMH-160H)	10
	SK17227	RACK D=22 X L=350 (FMH-175H)	11
	SK17227	RACK D=22 X L=350 (FMH-205H)	13
	SK17227	RACK D=22 X L=350 (FMH-220H)	14

SLIPCLUTCH DRIVELINE COMPONENTS



Item	Part #	Description	Qty
1	552040	Tractor Yoke with Push Pin 1-3/8" 6-S	1
2	552041	Push Pin Kit	1
3	552048	Cross Kit 30.25 x 80	2
4	552042	Complete Safety Shield	1
5	552005	Safety Chain	2
6	552043	Clutch Lining (2-Pack)	1
7	552044	Complete Slipclutch	1
8	552045	Eccentric Pin with Nut	1
9	552046	Outer Plastic Shield Bearing	1
10	552047	Inner Plastic Shield Bearing	1
	160010	Complete Slipclutch Driveline	