

IRONCRAFT

Contact your Authorized Ironcraft Dealer
for all your parts needs

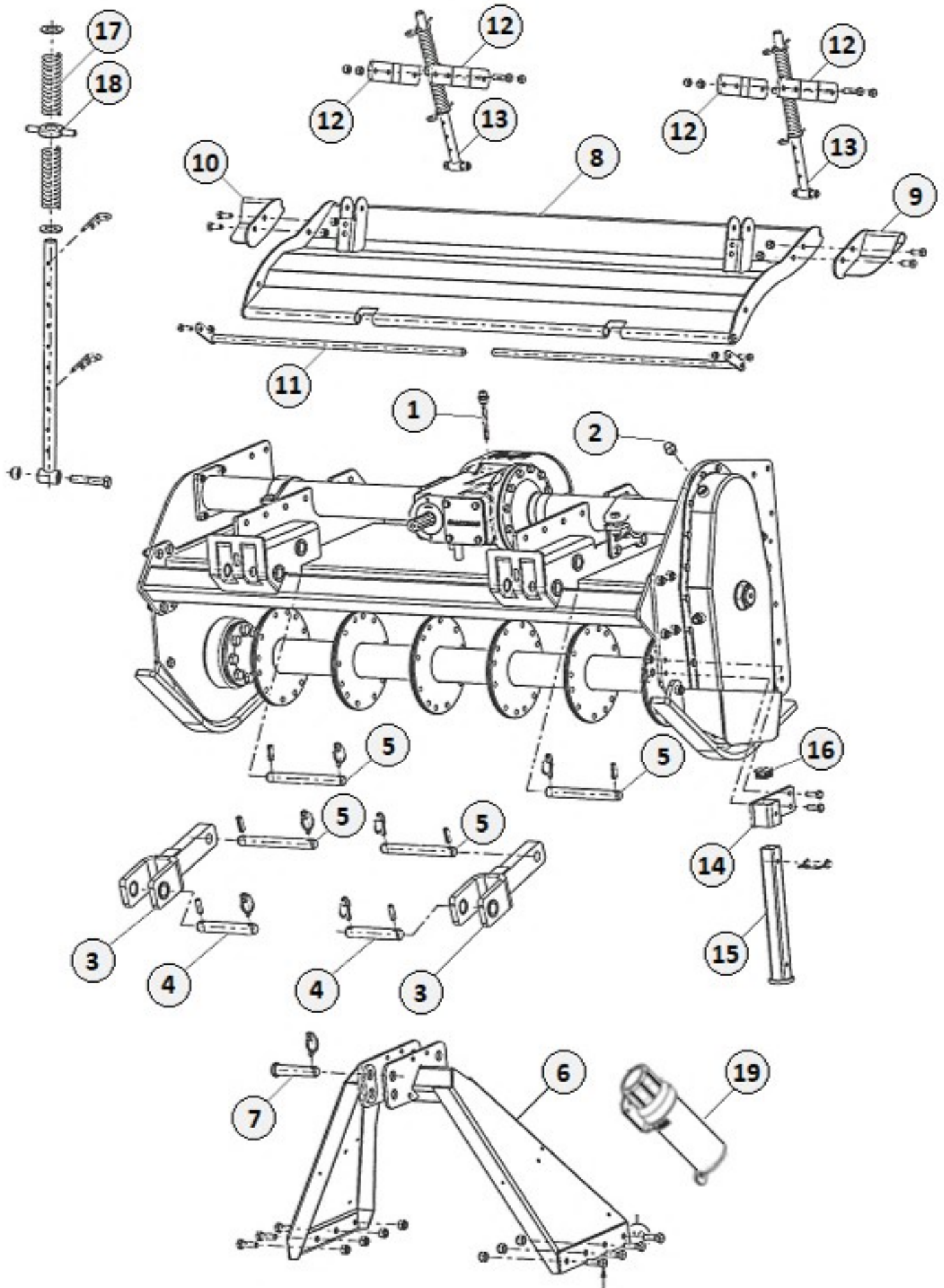


VH90 SERIES ROTARY TILLER PARTS MANUAL

Specifications

		VH90 SERIES TILLER MODEL
Overall dimensions	mm	2425 x 1263 x 1085
Tilling width	mm	2260
	in	89"
Recommended Tractor HP range	HP	80-95
3-point Hitch type		Cat. II, compat. Quick Hitch II cat. ASAE
Frame off-set	in	0.17"
No. of Tines (L/C-80x7)	No.	54
PTO Input speed	rpm	540
Rotor Shaft Speed	rpm @540	214
Standard Tine Construction	-	Curved / Square
Transmission type	-	Gear
Max Working depth	in	9"
Rotor tube diameter	mm	89
Rotor Swing Diameter	mm	521
Driveline safety device	-	Slip clutch / Shear Bolt
Weight (driveline excluded)	Kg	706
	lbs	1557

MAIN FRAME COMPONENTS

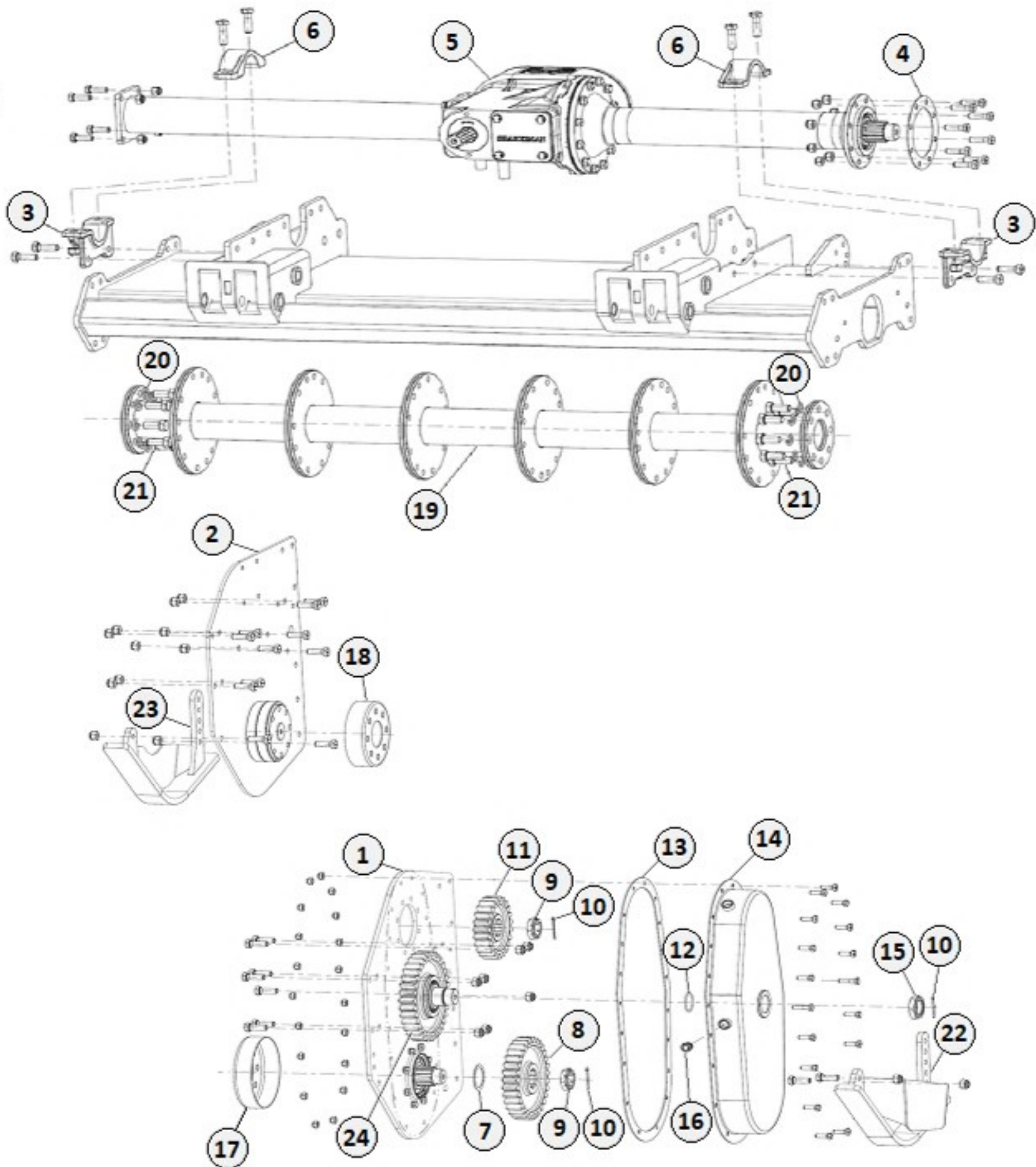


MAIN FRAME COMPONENTS

	PART #	DESCRIPTION	VH90 UNIT	Qty
1	SK3330	BREATHER DIPSTICK 87mm	All	1
2	SK14310	BREATHER ½"	All	1
3	SK23083	LOWER HITCH CLEVIS CAT-II	All	2
4	SK23103	LOWER HITCH PIN CAT-II	All	2
5	SK23105	PIN LOWER HITCH	All	4
6	SK3282	TOP MAST WELDMENT	All	1
7	SK23104	TOP HITCH PIN CAT-II	All	1
8	SK3302	REAR BOARD	All	1
9	SK3286	RH REAR BOARD EXTENSION	All	1
10	SK3287	LH REAR BOARD EXTENSION	All	1
11	SK3303	ROD REAR BOARD-WELDMENT	All	2
12	SK3291	SPRING SUPPORT BRACKET	All	4
13	SK2302	DAMPER SPRING ASSEMBLY	All	2
14	SK4787	SIDE STAND BRACKET	All	1
15	SK4788	SIDE STAND	All	1
16	SK4657	PLASTIC CAP 40mm	All	1
17	SK2305	DAMPER SPRING	All	2
18	SK2306	DAMPER SPRING COLLAR	All	2
19	SK26030	DOCUMENT HOLDER	All	1

NOTES: _____

GEARBOX ASSEMBLIES

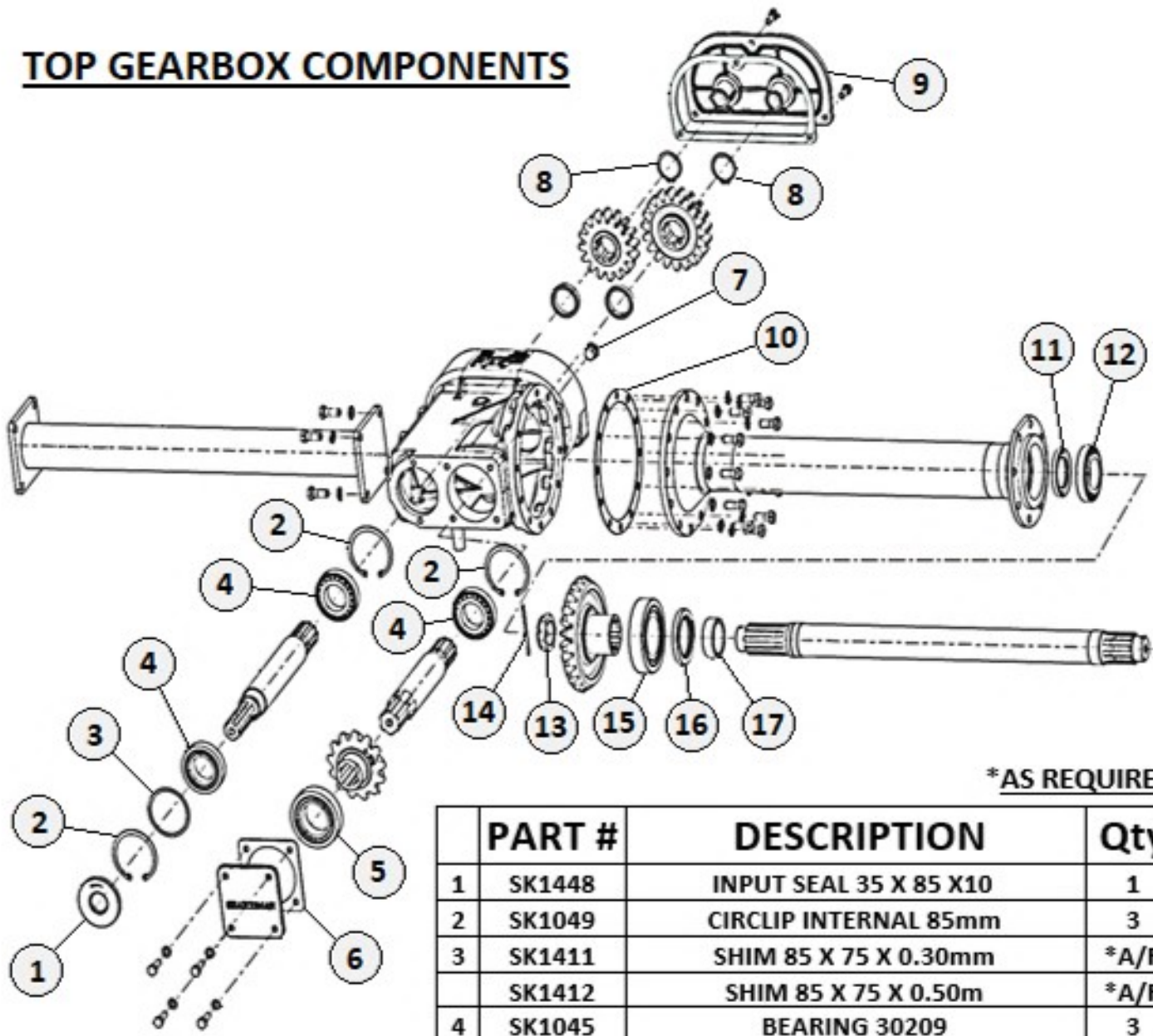


GEARBOX ASSEMBLIES

	PART #	DESCRIPTION	VH90 UNIT	Qty
1	SK3411	RH END PLATE ASM	All	1
2	SK3273	LH END PLATE	All	1
3	SK2232	JACK SHAFT BOTTOM CLAMP	All	2
4	SK2063	SMALL FLANGE GASKET	All	1
5	SK3299	TOP GEAR BOX ASSEMBLY	All	1
6	SK2231	JACK SHAFT TOP CLAMP	All	1
7	SK3348	SHIM 72 X 55 X 1mm	All	1
8	SK3406	BOTTOM GEAR 31-TEETH	All	1
9	SK1093	CASTLE NUT 40mm	All	2
10	SK14137	COTTER PIN M4 X 70	All	3
11	SK3019	TOP GEAR 23-TEETH	All	1
12	SK20351	"O" RING 47.2 I.D. X 3.5 W.	All	1
13	SK3006	SIDE COVER GASKET	All	1
14	SK3279	SIDE COVER GD SIDE	All	1
15	SK23065	NYLOCK NUT M45 X 1.5	All	1
16	SK23251	OIL LEVEL PLUG TYPE ½ BSP	All	1
17	SK1119	LARGE DUST COVER	All	1
18	SK1087	SMALL DUST COVER	All	1
19	SK3301	ROTOR WELDMENT	All	1
20	SK1308	LOCKWASHER 16mm	All	16
21	SK1163	HEX BOLT M16 X 1.50 X 35 (10.9)	All	16
22	SK3283	RH SKID SHOE	All	1
23	SK3284	LH SKID SHOE	All	1
24	SK3020	CTR IDLER GEAR 34-TEETH	All	1

NOTES: _____

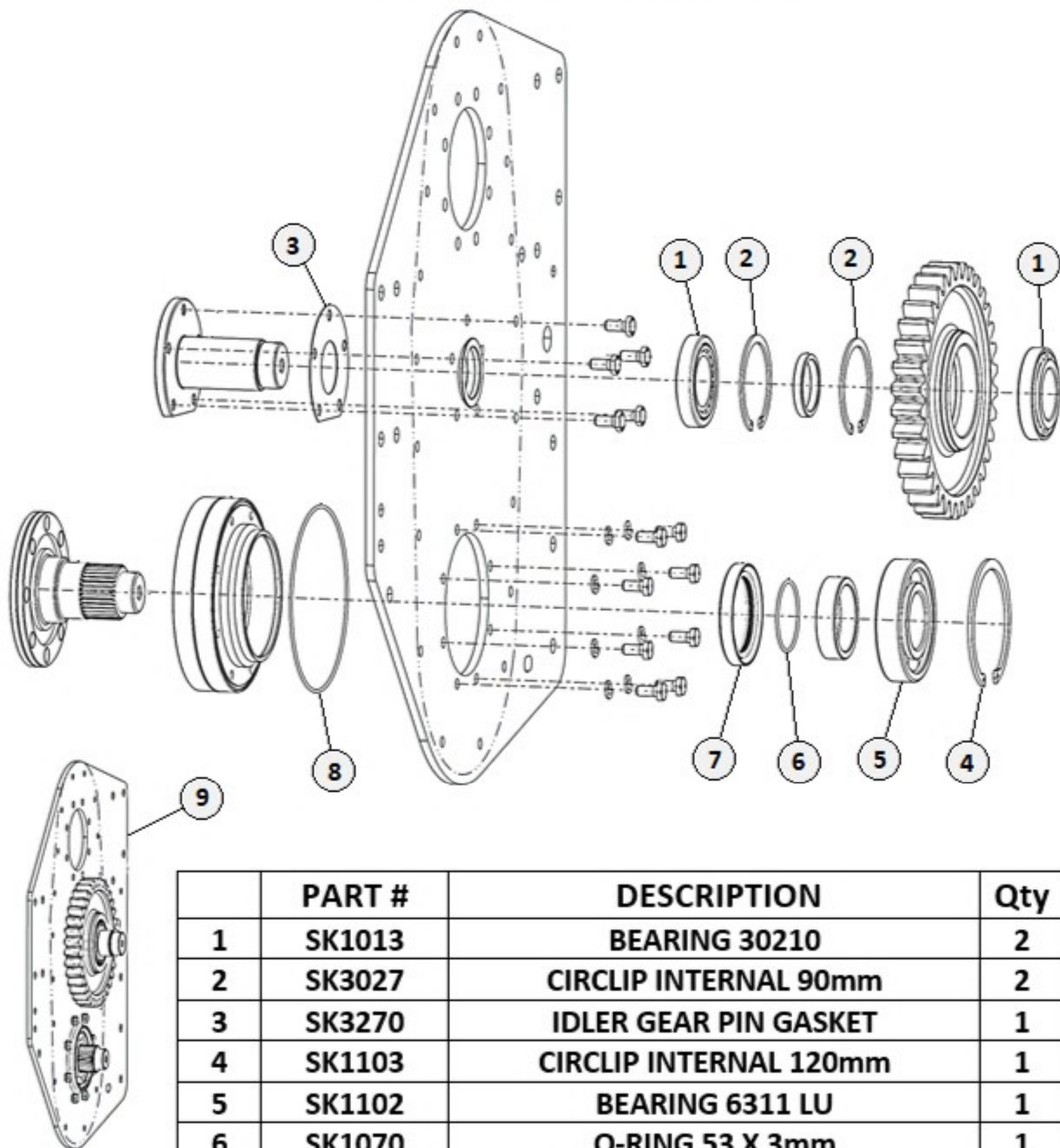
TOP GEARBOX COMPONENTS



*AS REQUIRED

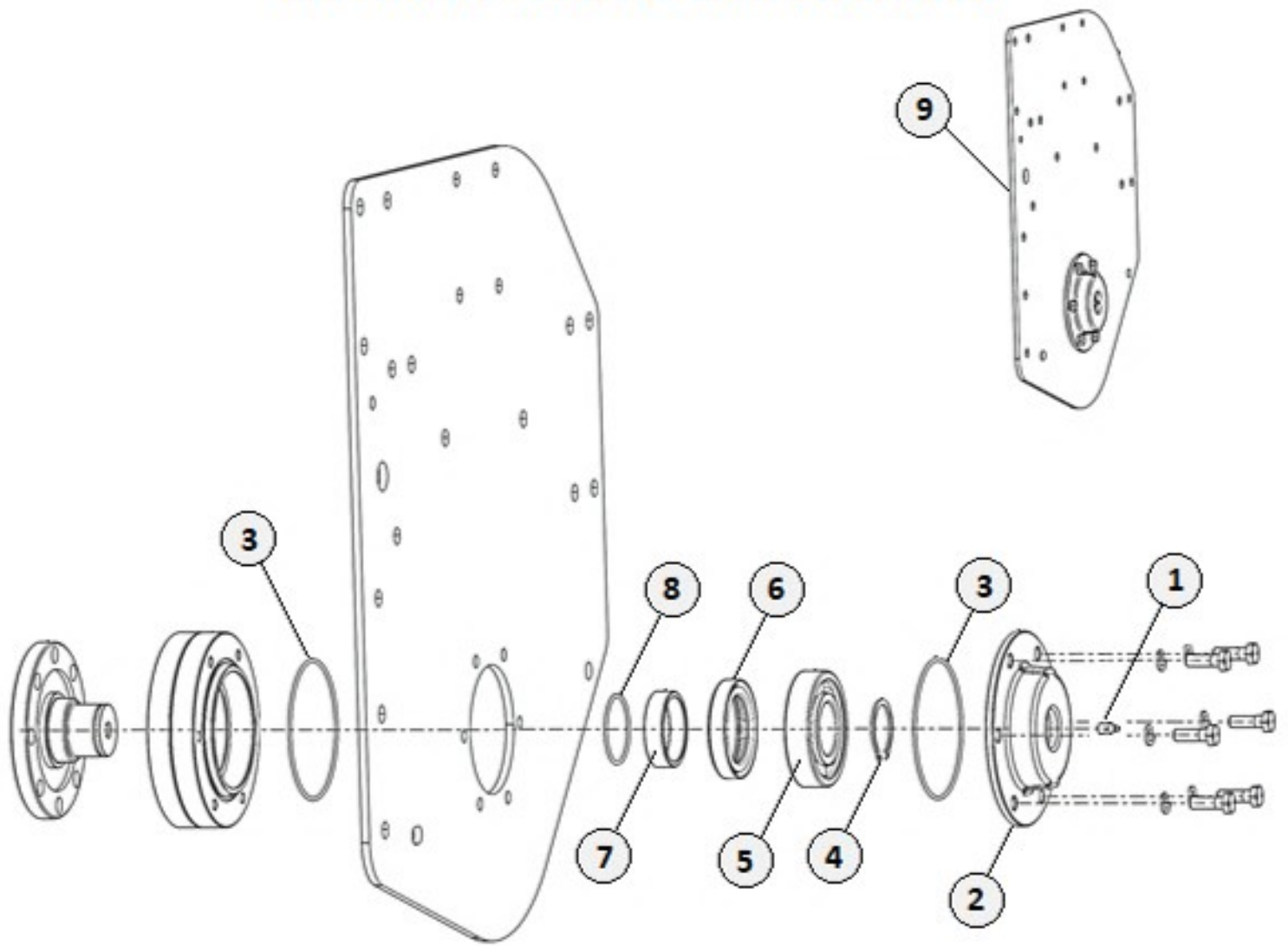
	PART #	DESCRIPTION	Qty
1	SK1448	INPUT SEAL 35 X 85 X 10	1
2	SK1049	CIRCLIP INTERNAL 85mm	3
3	SK1411	SHIM 85 X 75 X 0.30mm	*A/R
	SK1412	SHIM 85 X 75 X 0.50m	*A/R
4	SK1045	BEARING 30209	3
5	SK1030	BEARING 32211	1
6	SK2012	SIDE PLATE GASKET 0.4mm	*A/R
	SK2106	SIDE PLATE GASKET 0.8mm	*A/R
	SK2107	SIDE PLATE GASKET 1.5mm	*A/R
7	SK1596	½ BSP BOLT W/O-RING	1
8	SK2089	CIRCLIP EXTERNAL 45mm	2
9	SK2225	BACK PLATE GASKET	1
10	SK2018	LARGE FLANGE GASKET 0.4mm	*A/R
	SK2104	LARGE FLANGE GASKET 0.8mm	*A/R
	SK2105	LARGE FLANGE GASKET 1.5mm	*A/R
11	SK17262	OIL SEAL 55X 75 X 8	1
12	SK1013	BEARING 30210	1
13	SK1093	CASTLE NUT 40mm	1
14	SK2100	COTTER PIN M4 X 76mm	1
15	SK2024	BEARING 32213	1
16	SK2023	OIL SEAL 65 X 90 X 10	1
17	SK3324	SHAFT TAPERED SLEEVE	1
18	SK3299	COMPLETE TOP GEAR BOX ASSEMBLY	1

SIDE DRIVE COMPONENTS



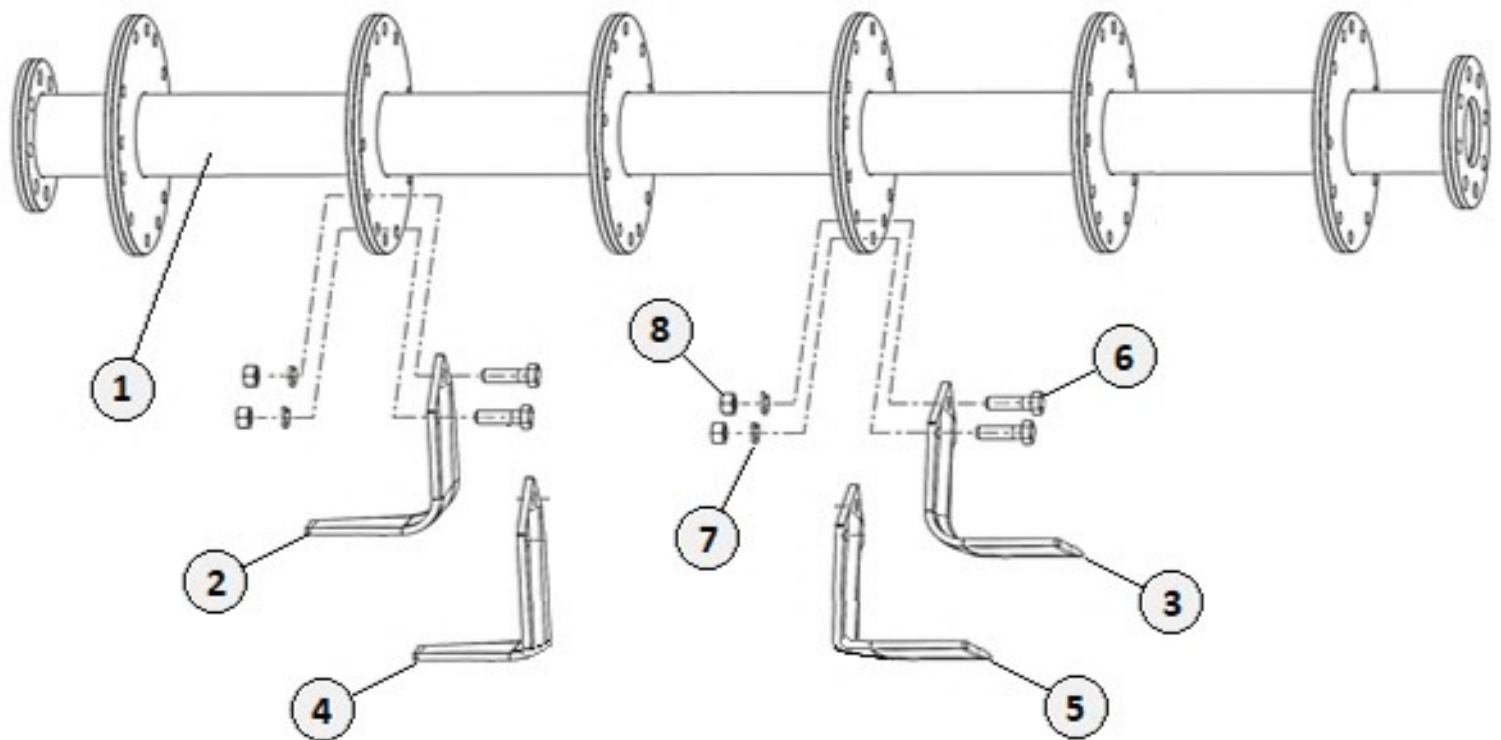
	PART #	DESCRIPTION	Qty
1	SK1013	BEARING 30210	2
2	SK3027	CIRCLIP INTERNAL 90mm	2
3	SK3270	IDLER GEAR PIN GASKET	1
4	SK1103	CIRCLIP INTERNAL 120mm	1
5	SK1102	BEARING 6311 LU	1
6	SK1070	O-RING 53 X 3mm	1
7	SK1101	MULTI-LIP OIL SEAL 6311	1
8	SK4654	O-RING 175 X 3mm	1
9	SK3411	RH END PLATE ASSEMBLY	1

LH END PLATE COMPONENTS



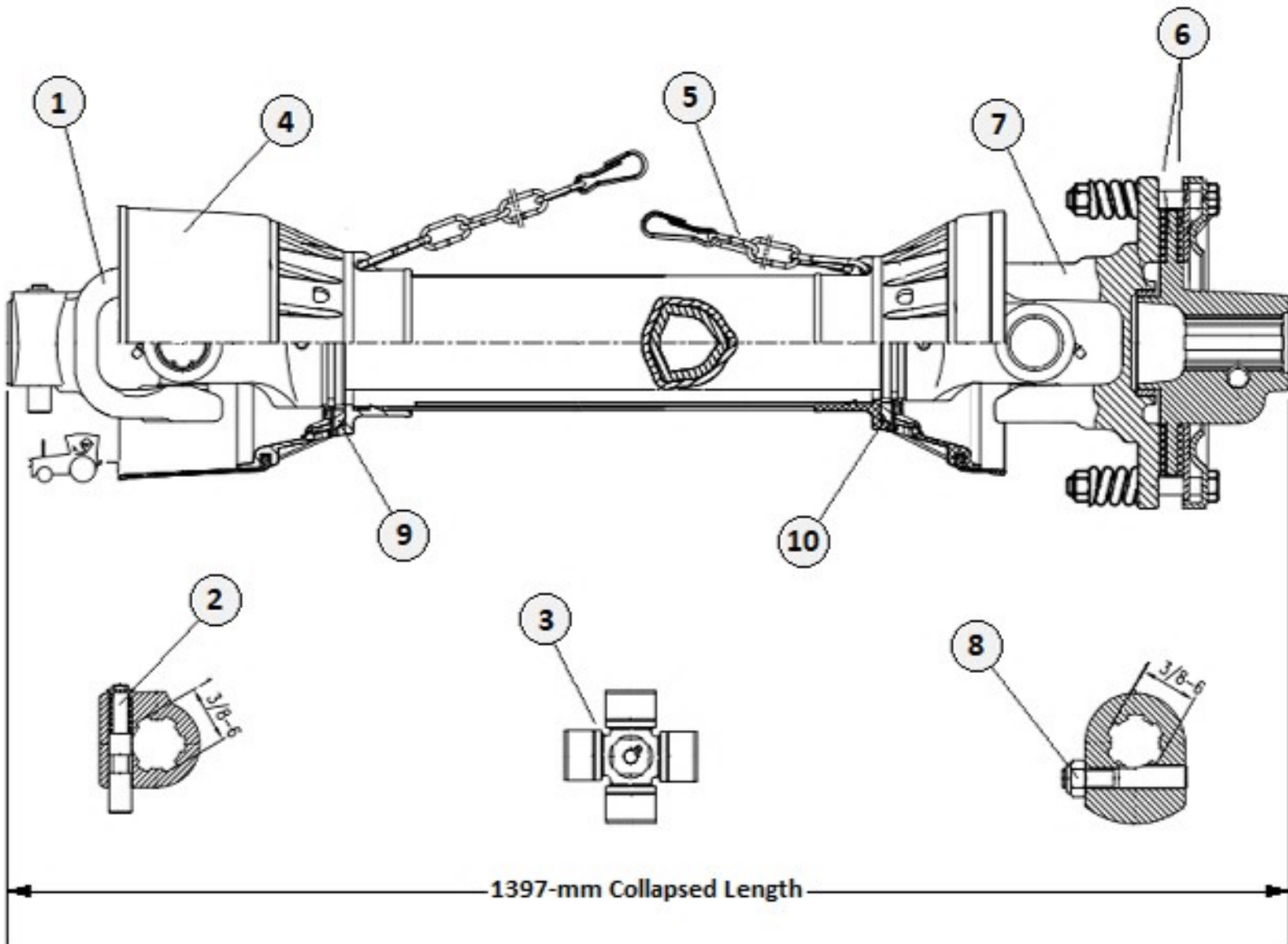
	PART #	DESCRIPTION	Qty
1	SK1253	1/8 BSP GREASE ZERK 7.5mm	1
2	SK2331	END COVER	1
3	SK1323	O-RING 115 X 3mm	2
4	SK4711	CIRCLIP EXTERNAL 45mm	1
5	SK1073	BEARING 6309 LU	1
6	SK1072	MULTI-LIP OIL SEAL 6309	1
7	SK1600	STUB AXLE SLEEVE	1
8	SK1070	O-RING 53 X 3 mm	1
9	SK3273	LH END PLATE ASSEMBLY	1

ROTOR COMPONENTS



	PART #	DESCRIPTION	VH90 UNIT	Qty
1	SK3301	ROTOR WELDMENT	All	1
2	SK23159	LH CURVED BLADE (Standard)	All	27
3	SK23160	RH CURVED BLADE (Standard)	All	27
4	SK1374	LH "L" BLADE	Optional	27
5	SK3029	RH "L" BLADE	Optional	27
6	SK23318	HEX BOLT M14 X 1.50 X 40 (8.8)	All	54
7	SK1307	LOCKWASHER 14mm	All	54
8	SK3347	HEX NUT M14 X 1.50	All	54

SLIPCLUTCH DRIVELINE COMPONENTS



Item	Part #	Description	Qty
1	552020	Tractor Yoke with Push Pin 1-3/8" 6-S	1
2	552021	Push Pin Kit	1
3	552023	Cross Kit 30.25 x 92	2
4	552024	Complete Safety Shield	1
5	552005	Safety Chain	2
6	552025	Clutch Lining (2-Pack)	1
7	552026	Complete Slipclutch	1
8	552027	Eccentric Pin with Nut	1
9	552028	Outer Plastic Shield Bearing	1
10	552029	Inner Plastic Shield Bearing	1
	150037	Complete Slipclutch Driveline	