



# IRONCRAFT

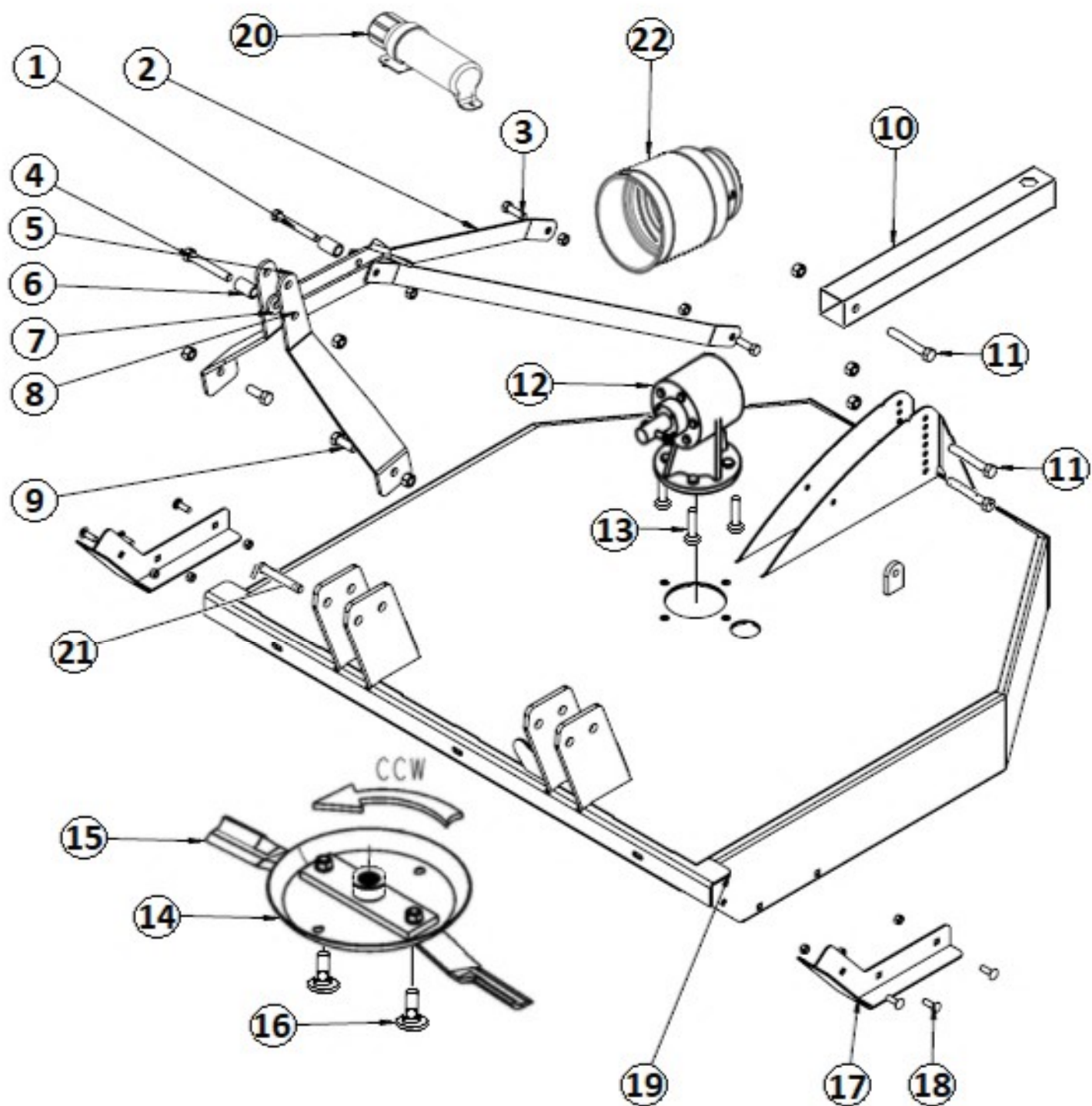
Contact your Authorized Ironcraft Dealer  
for all your parts needs



## **305 / 306 SERIES ROTARY CUTTER PARTS MANUAL**

# Deck Components

## Single Tailwheel Models



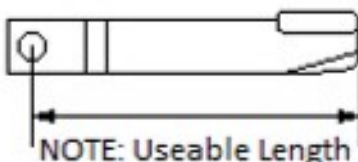
(Bolt holes 13" Ctr to Ctr)

# Deck Components

## Single Tailwheel Models

Item	Part #	Description	Qty
1	140004	A-Frame Knuckle Bolt Kit (5/8"x 5")	1
2	120008	Back Brace (1/4"x 44-1/2")	2
3	110004	Bolt & Locknut Kit (5/8"x 2") 4-Pack	1
4	140018	Bolt & Locknut Kit (3/4"x 5")	1
5	305002	A-Frame Strut	2
6	110030	A-Frame Top Spacer (2")	1
7	305003	A-Frame Knuckle - RH	1
8	305004	A-Frame Knuckle - LH	1
9	150034	Bolt & Locknut Kit (3/4"x 2-1/2")	2
10	120002	Tailwheel Tube 34"	1
11	120003	Bolt & Locknut Kit (1/2"x 4-1/2")	3
12	130000	Gearbox 100-Hp 1.1.46 Ratio	1
13	110068	Gearbox Bolt, W/Nut & Lockwasher Kit (3/4"x 3") 4-Pack	1
14	110011	Blade Carrier 100-Hp (Dish Type) (Bolt holes 13" Ctr to Ctr)	1
15	T-60	Cutter Blades for 5-ft (Sold in Pairs) Useable Length 22"	1
	T-72	Cutter Blades for 6-ft (Sold in Pairs) Useable Length 27"	1
16	110012	Blade Bolt W/Nut & Lockwasher Kit (2-Pack)	2
17	305001	Skid Shoe	2
18	120011	Carriage Bolt & Locknut Kit (1/2"x 1-1/2") 6-Pack	1
19	305000	5-ft Deck Skin Only (Specify Color) – Single TW Model	A/R
	306000	6-ft Deck Skin Only (Specify Color) – Single TW Model	A/R
20	110034	Manual Holder W/Screws	1
21	310031	Lift Pin Cat-I	2
22	120001	Gearbox Shield - SC	1
	110006	Bolt & Lockwasher Kit 5/16"x 1/2" (4-Pack)	1

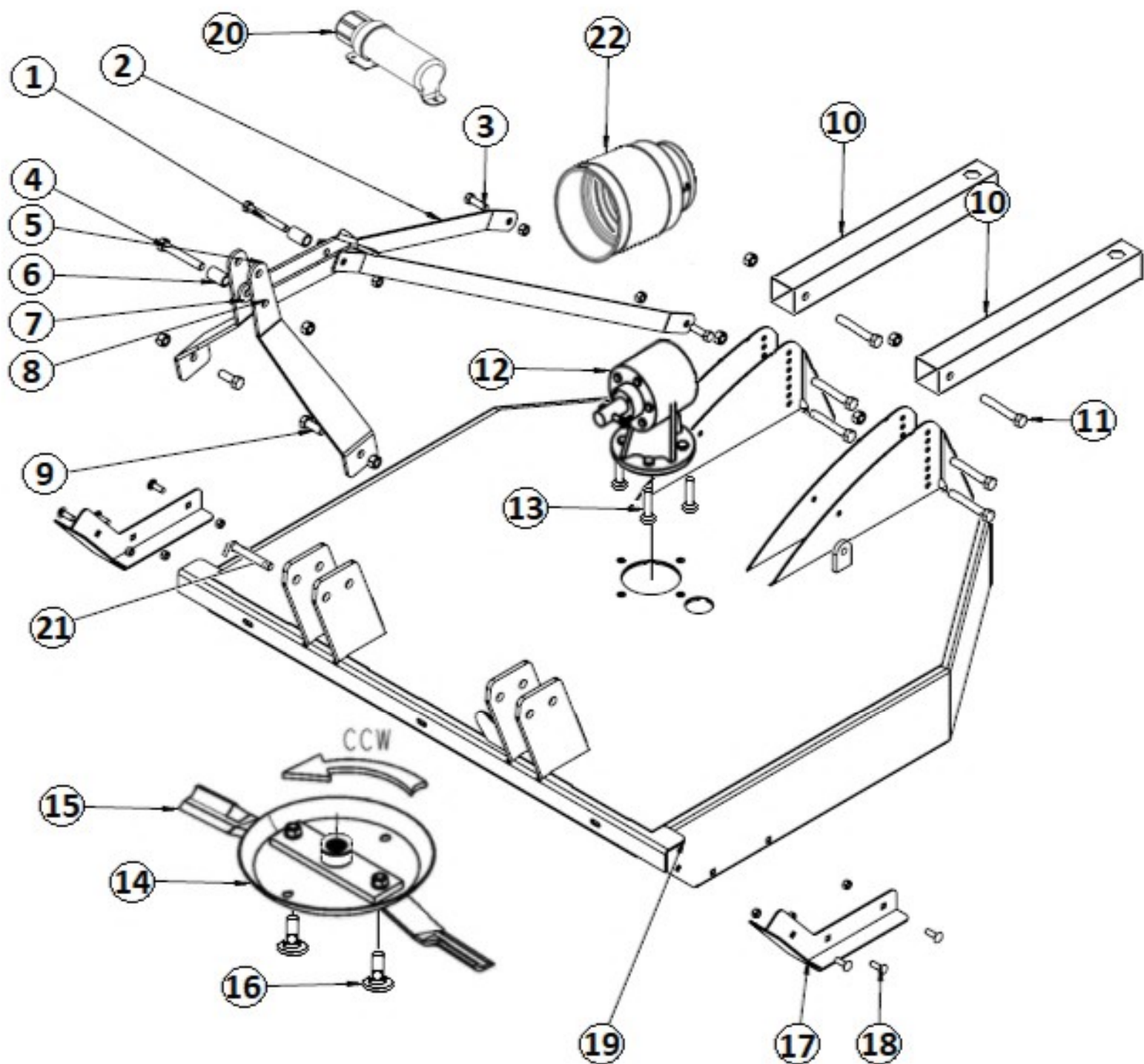
Note: A/R = As Required



NOTE: Uses 1-11/16" Socket size for Blade Bolt Nut

# Deck Components

## Two Wheel Model



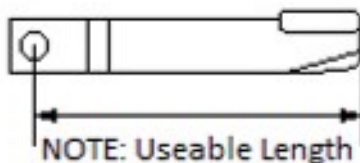


# Deck Components

## Two Wheel Model

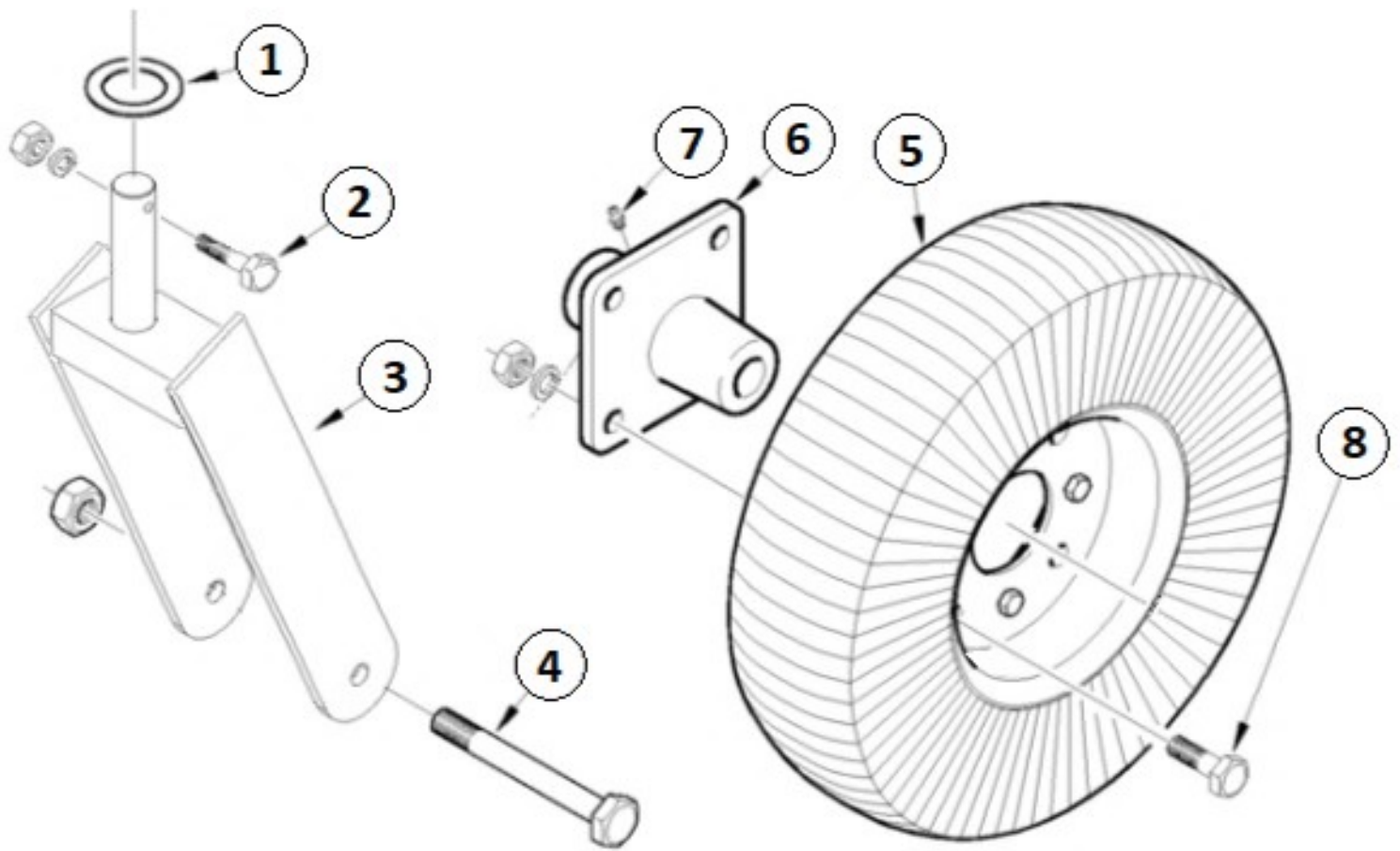
Item	Part #	Description	Qty
1	140004	A-Frame Knuckle Bolt Kit (5/8"x 5")	1
2	120008	Back Brace (1/4"x 44-1/2")	2
3	110004	Bolt & Locknut Kit (5/8"x 2") 4-Pack	1
4	140018	Bolt & Locknut Kit (3/4"x 5")	1
5	305002	A-Frame Strut	2
6	110030	A-Frame Top Spacer (2")	1
7	305003	A-Frame Knuckle - RH	1
8	305004	A-Frame Knuckle - LH	1
9	150034	Bolt & Locknut Kit (3/4"x 2-1/2")	2
10	120002	Tailwheel Tube 34"	2
11	120003	Bolt & Locknut Kit (1/2"x 4-1/2")	6
12	130000	Gearbox 100-Hp 1.1.46 Ratio	1
13	110068	Gearbox Bolt, W/Nut & Lockwasher Kit (3/4"x 3") 4-Pack	1
14	110011	Blade Carrier 100-Hp (Dish Type) (Bolt holes 13" Ctr to Ctr)	1
15	T-72	Cutter Blades for 6-ft (Sold in Pairs) Useable Length 27"	1
16	110012	Blade Bolt W/Nut & Lockwasher Kit (2-Pack)	2
17	305001	Skid Shoe	2
18	120011	Carriage Bolt & Locknut Kit (1/2"x 1-1/2") 6-Pack	1
19	306002	6-ft Deck Skin Only (Specify Color) – Dual TW Model	A/R
20	110034	Manual Holder W/Screws	1
21	310031	Lift Pin Cat-I	2
22	120001	Gearbox Shield - SC	1
	110006	Bolt & Lockwasher Kit 5/16"x 1/2" (4-Pack)	1

Note: A/R = As Required



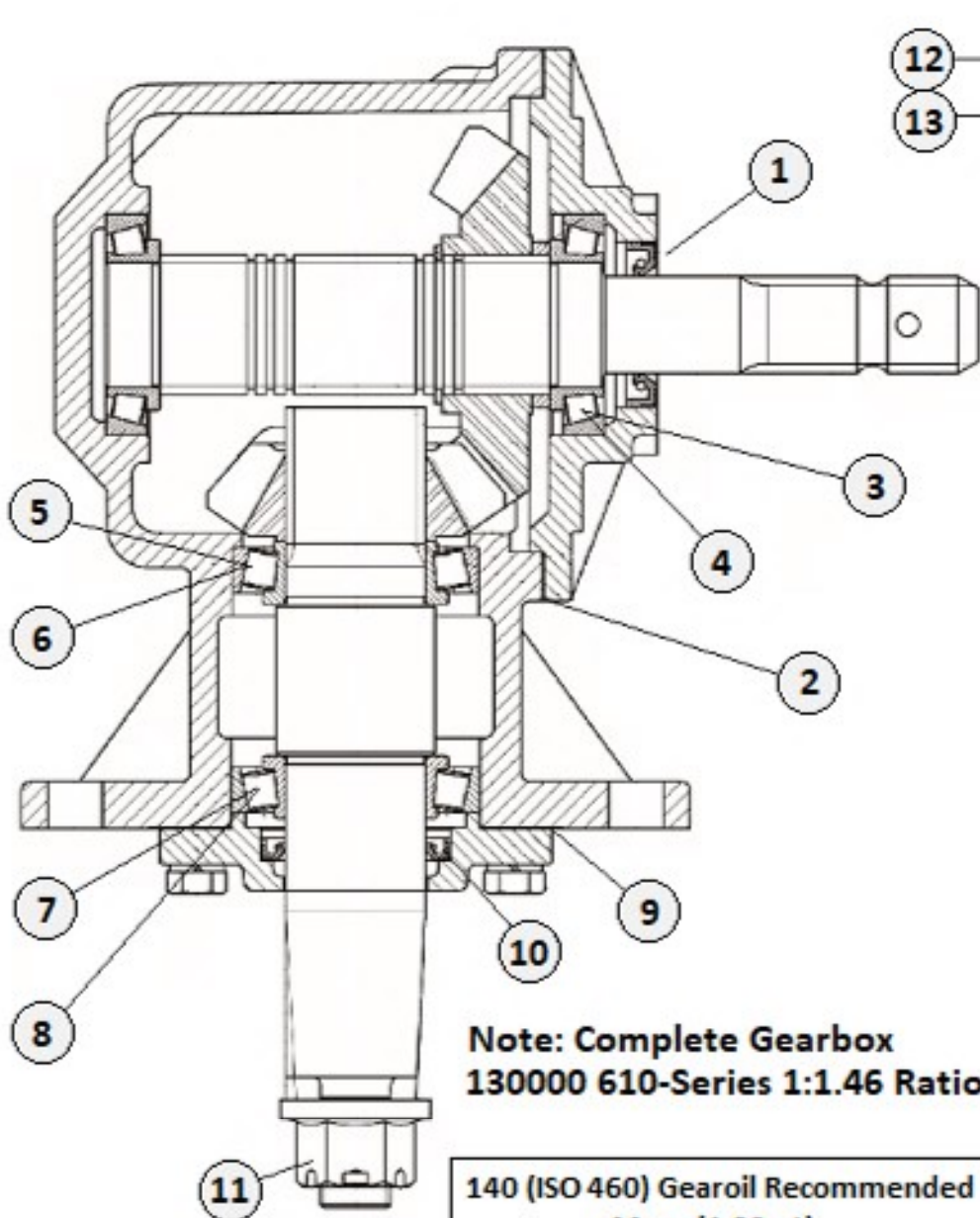
NOTE: Uses 1-11/16" Socket size for Blade Bolt Nut

## Tailwheel Components



Item	Part #	Description	Qty
1	110019	Flat Washer 1-1/4"	1
2	110070	Bolt & Nut Kit 1/2"x 2-1/2" Gr.2	1
3	110018	Tailwheel Fork	1
4	110020	Tailwheel Axle Bolt & Nut Kit 1"x 8"	1
5	110022	Laminated Wheel & Rim	1
6	110024	Standard Wheel Hub W/Bolts	1
7	110021	Zerk Fitting 14/28	1
8	110017	Hub Bolt Kit 1/2"x 1-1/2" (4-Pack)	1
	110072	Standard Duty Tailwheel Assembly - Complete	A/R

# Gearbox Components

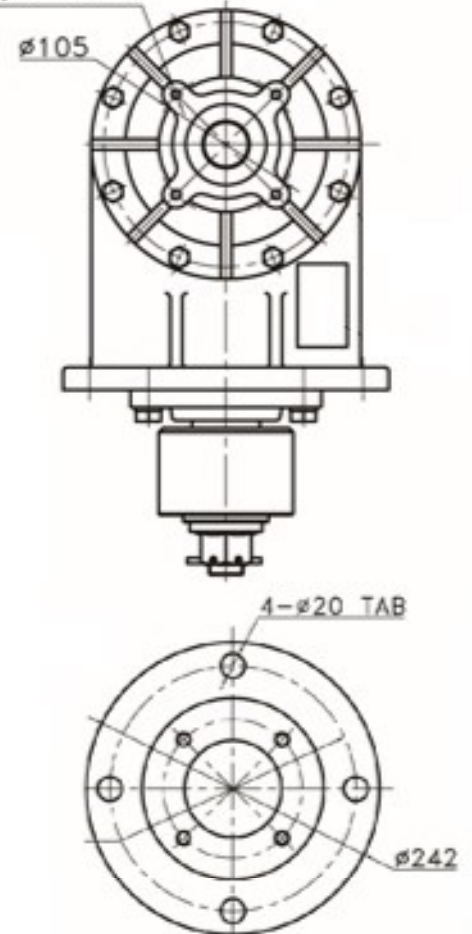


Not Shown:

12 — PRESSURE RELIEF PLUG

13 — PIPE PLUG (SQUARE HEAD)

4-5/16"-18UNC TAB  
5/8" DEEP



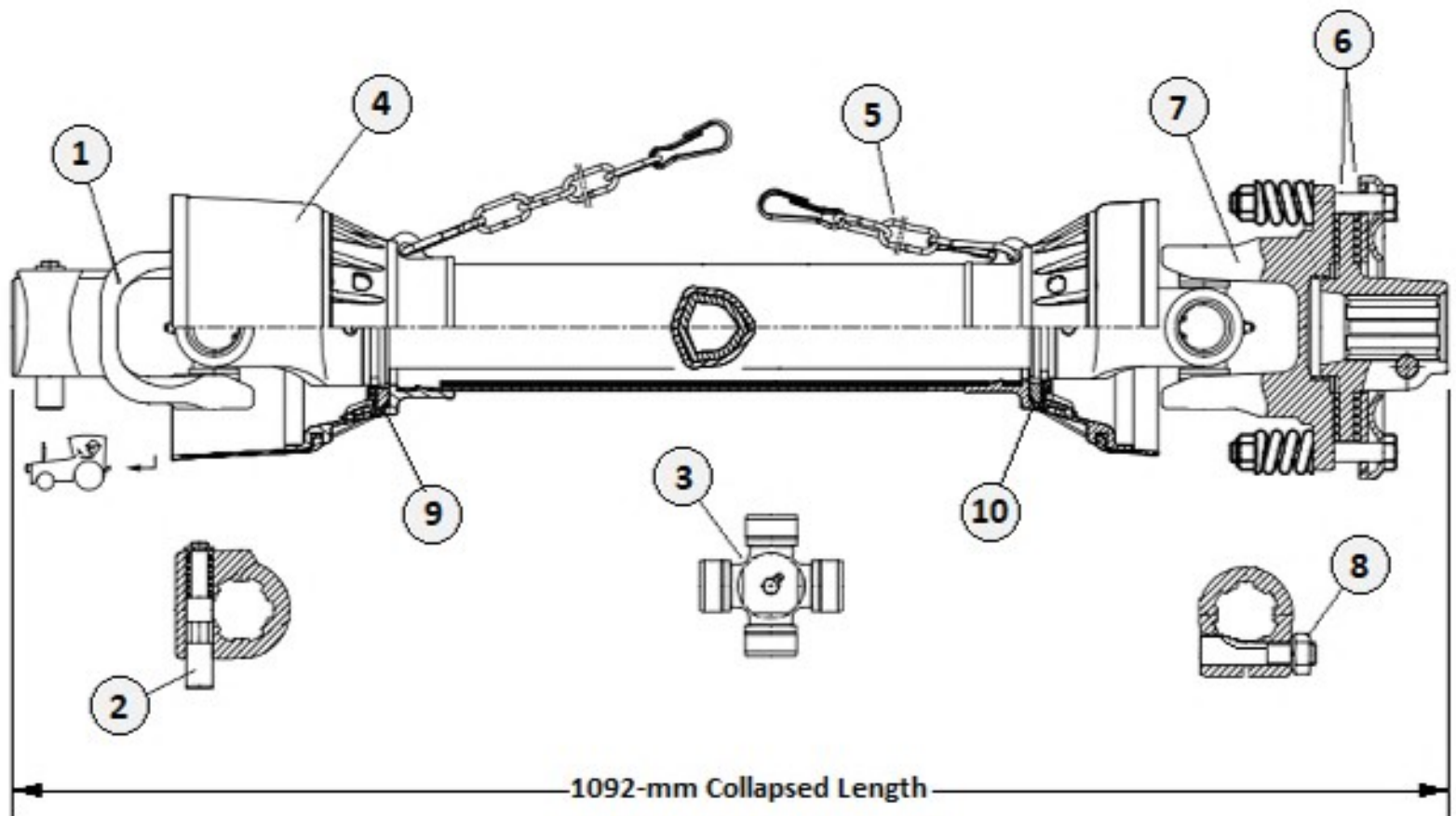
**Note: Complete Gearbox  
130000 610-Series 1:1.46 Ratio**

140 (ISO 460) Gearoil Recommended  
44 oz. (1.32 qt)

Item	Part #	Description	Qty
1	551020	Input Seal	1
2	551021	Input Gasket Kit	1
3	551022	Input Cone Bearing	2
4	551023	Input Bearing Cup	2
5	551024	Output Cone Bearing – Top	1
6	551025	Output Bearing Cup – Top	1
7	551026	Output Cone Bearing – Bottom	1
8	551027	Output Bearing Cup – Bottom	1
9	551028	Output Gasket Kit	1
10	551029	Output Seal	1
11	110013	Castle Nut / Cotter Pin Kit 1" Fine Thread	1
12	110008	Pressure Relief Plug	1
13	110009	Pipe Plug (Square Head)	1



# Driveline Components

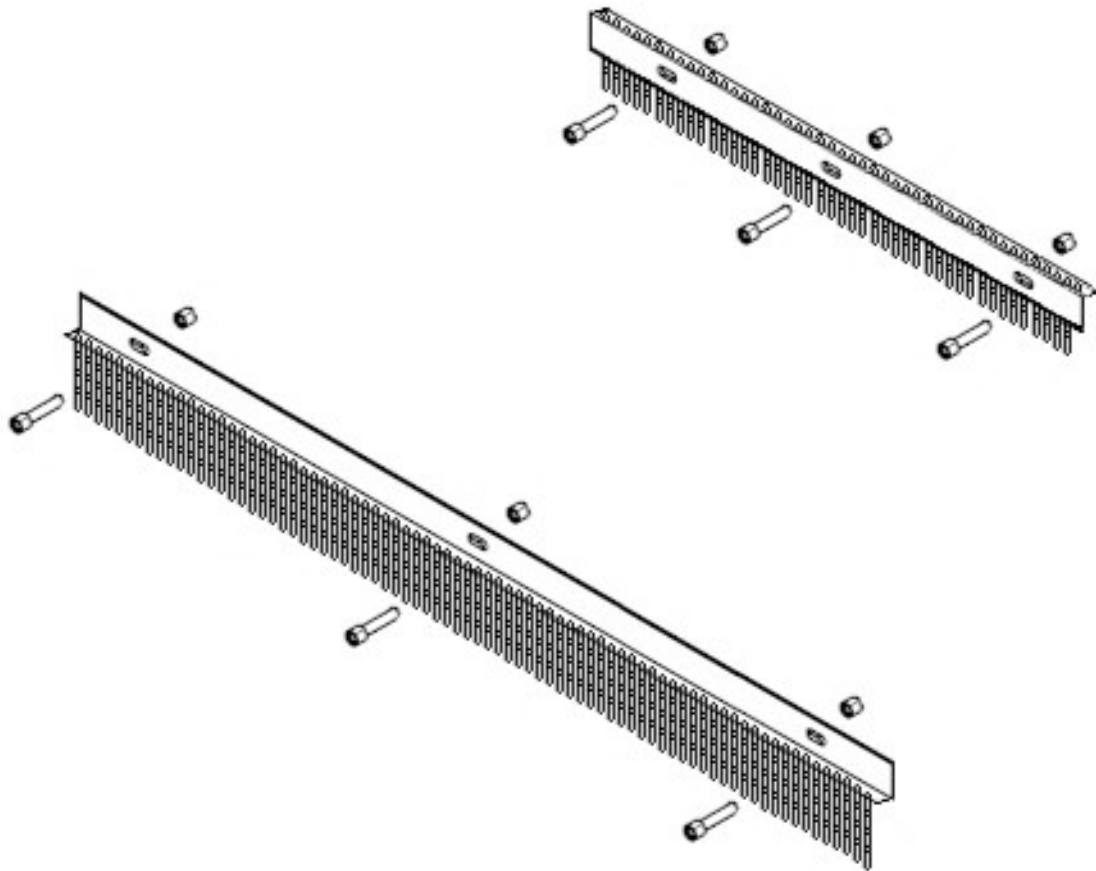


Item	Part #	Description	Qty
1	552000	Tractor Yoke with Push Pin 1-3/8" 6-S	1
2	552001	Push Pin Kit	1
3	552003	Cross Kit 27 x 74.6	2
4	552030	*Complete Safety Shield	1
5	552005	Safety Chain	2
6	552031	Clutch Lining (2-Pack)	1
7	552032	Complete Slipclutch	1
8	552033	Eccentric Pin with Nut	1
9	552034	Outer Plastic Shield Bearing	1
10	552035	Inner Plastic Shield Bearing	1
	<b>120012</b>	<b>*Complete Slipclutch Driveline (Series 4)</b>	

\*May need to cut driveline shorter to fit 4-ft & 5-ft Applications



# CHAIN GUARDS



Item	Part #	Description	Qty
1	CG-305	(5-ft) COMPLETE CHAIN GUARD KIT - Front & Rear	1
	CG-306	(6-ft) COMPLETE CHAIN GUARD KIT - Front & Rear	1