

# IRONCRAFT

Contact your Authorized Ironcraft Dealer  
for all your parts needs



# FMA SERIES ROTARY TILLER PARTS MANUAL

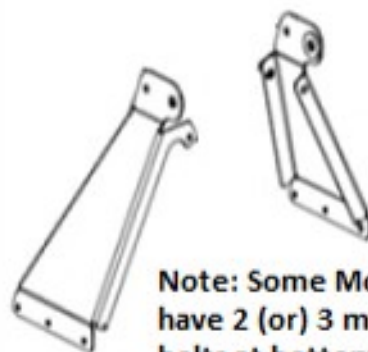
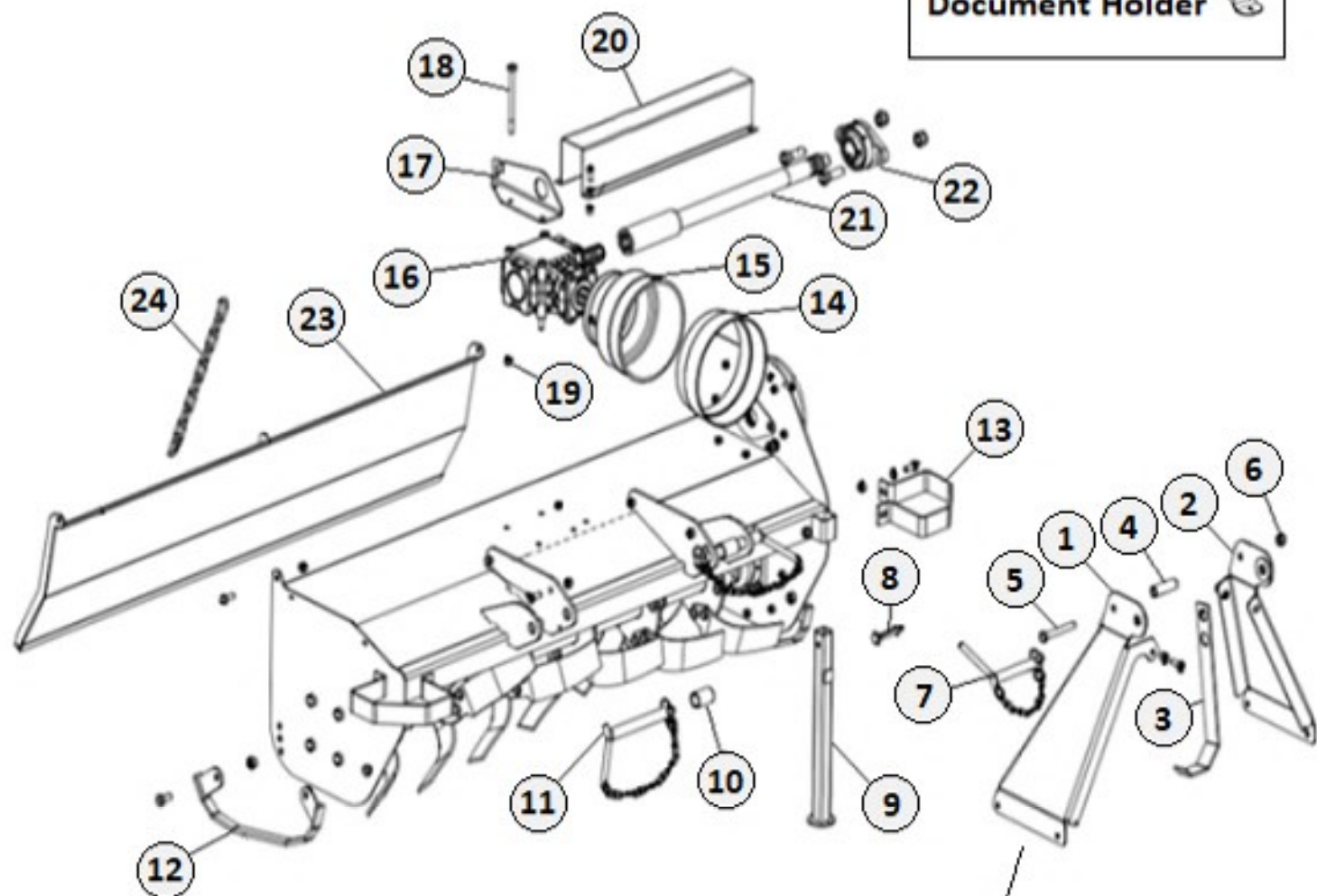
# Specifications

|                                     |             | <b>TILLER MODEL</b> |
|-------------------------------------|-------------|---------------------|
|                                     |             | <b>2004</b>         |
| <b>Overall dimensions</b>           | mm          | 1545 x 882 x 687    |
| <b>Tilling width</b>                | in          | 49"                 |
|                                     | cm          | 125                 |
| <b>Recommended Tractor HP range</b> | HP          | 20-25               |
| <b>3-point Hitch type</b>           | -           | Cat. I              |
| <b>Frame off-set</b>                | in          | -                   |
| <b>Number of Flanges on Rotor</b>   | No.         | 6                   |
| <b>Number of tines</b>              | No.         | 24                  |
| <b>PTO Input speed</b>              | rpm         | 540                 |
| <b>Rotor Shaft Speed</b>            | rpm<br>@540 | 230                 |
| <b>Standard Tine Construction</b>   | -           | curved              |
| <b>Transmission type</b>            | -           | Chain               |
| <b>Max Working depth</b>            | cm          | 12                  |
| <b>Rotor tube diameter</b>          | mm          | 52                  |
| <b>Rotor Swing Diameter</b>         | mm          | 386                 |
| <b>Driveline safety device</b>      | -           | slip clutch         |
| <b>Weight (driveline excluded)</b>  | lbs         | 297                 |
|                                     | Kg.         | 135                 |

# MAIN FRAME COMPONENTS

SK26030

Document Holder



Note: Some Models will have 2 (or) 3 mounting bolts at bottom of Mast  
They are not interchangeable

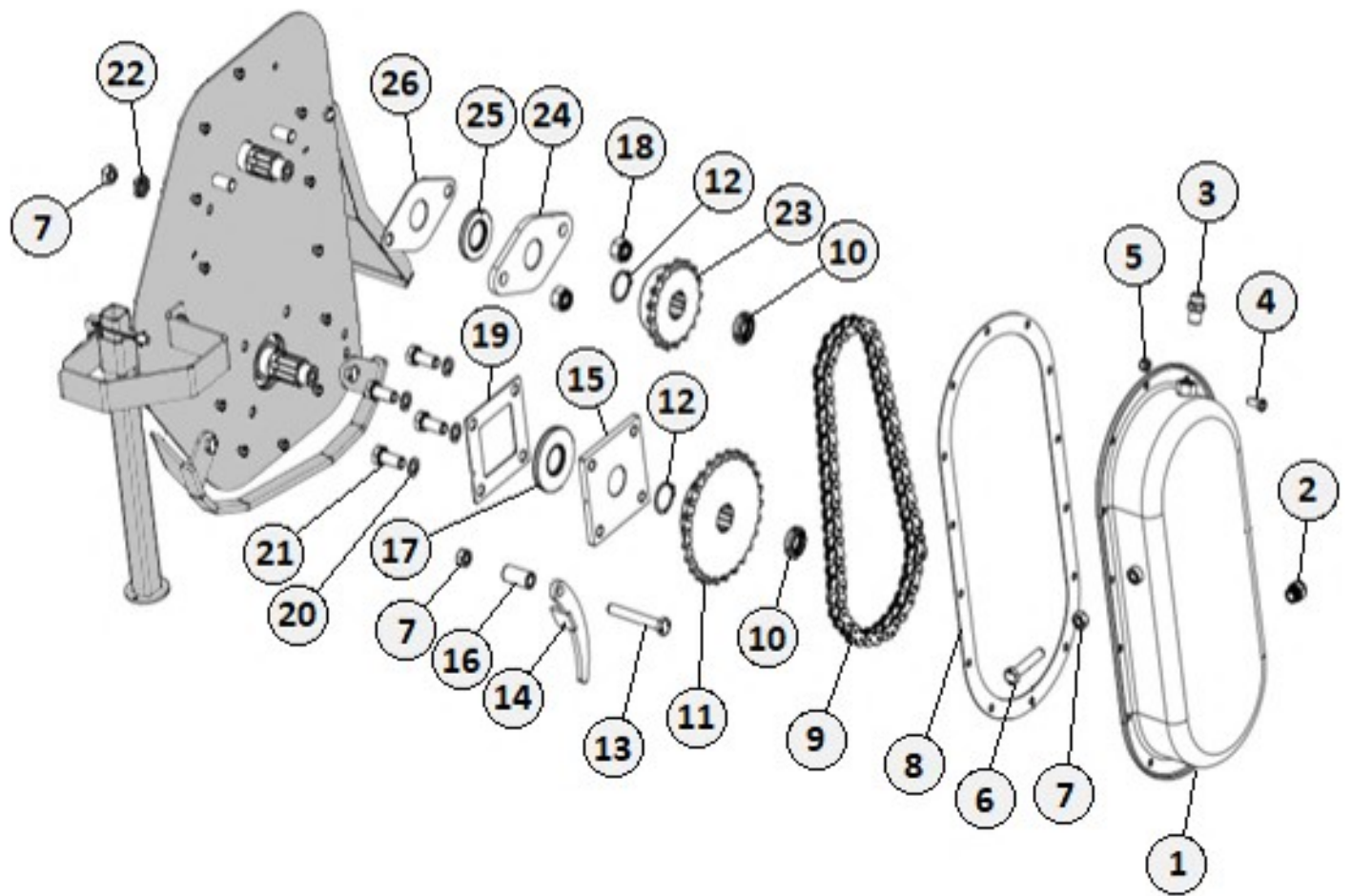
| Item | Part #       | Description                     | Qty |
|------|--------------|---------------------------------|-----|
| 1    | *SK36007     | LH Mast (2-Bolt Bottom Mount)   | A/R |
|      | *SK101108533 | LH Mast (3-Bolt Bottom Mount)   | A/R |
| 2    | *SK36073     | RH Mast (2-Bolt Bottom Mount)   | A/R |
|      | *SK101108532 | RH Mast (3-Bolt Bottom Mount)   | A/R |
| 3    | SK36020      | PTO Shaft Bracket               | 1   |
| 4    | SK36032      | Bushing 20 x 13 x 65L           | 1   |
| 5    | SK36044      | Hex Bolt M12 x 1.75 x 90 (8.8)  | 2   |
| 6    | SK1209       | Nylock Nut M12 x 1.75           | 2   |
| 7    | SK36029      | Top Link Pin                    | 1   |
| 8    | SK36053      | Snap Pin D8 x L66               | 1   |
| 9    | SK36052      | Stand                           | 1   |
| 10   | SK36032      | Bushing 30 x 24 x 45L           | 2   |
| 11   | SK36030      | Lower Hitch Pin                 | 2   |
| 12   | SK36010      | Skid Shoe                       | 2   |
| 13   | SK36012      | Fender                          | 2   |
| 14   | SK36067      | PTO Shield Cone                 | 1   |
| 15   | SK17788      | PTO Shield Ring                 | 1   |
| 16   | **SK36027    | Complete Gearbox                | 1   |
| 17   | SK36019      | Gearbox Bracket                 | 1   |
| 18   | SK36045      | Hex Bolt M10 x 1.50 x 130 (8.8) | 4   |
| 19   | SK1298       | Nylock Nut M10 x 1.50           | 4   |
| 20   | SK36013      | Shaft Cover                     | 1   |
| 21   | SK36028      | Driving Shaft                   | 1   |
| 22   | SK36037      | Flange Bearing UCFL207          | 1   |
| 23   | SK36008      | Tailgate                        | 1   |
| 24   | SK36042      | Lift Chain W/Quick Link         | 1   |

**\*NOTE:** Be sure on both the LH & RH Front Mast to verify bottom mounting bolts – whether there are two bolts or three bolts which mount Mast to top of Frame.

**\*\*NOTE:** SK36070 has been replaced by SK36027 Complete Gearbox



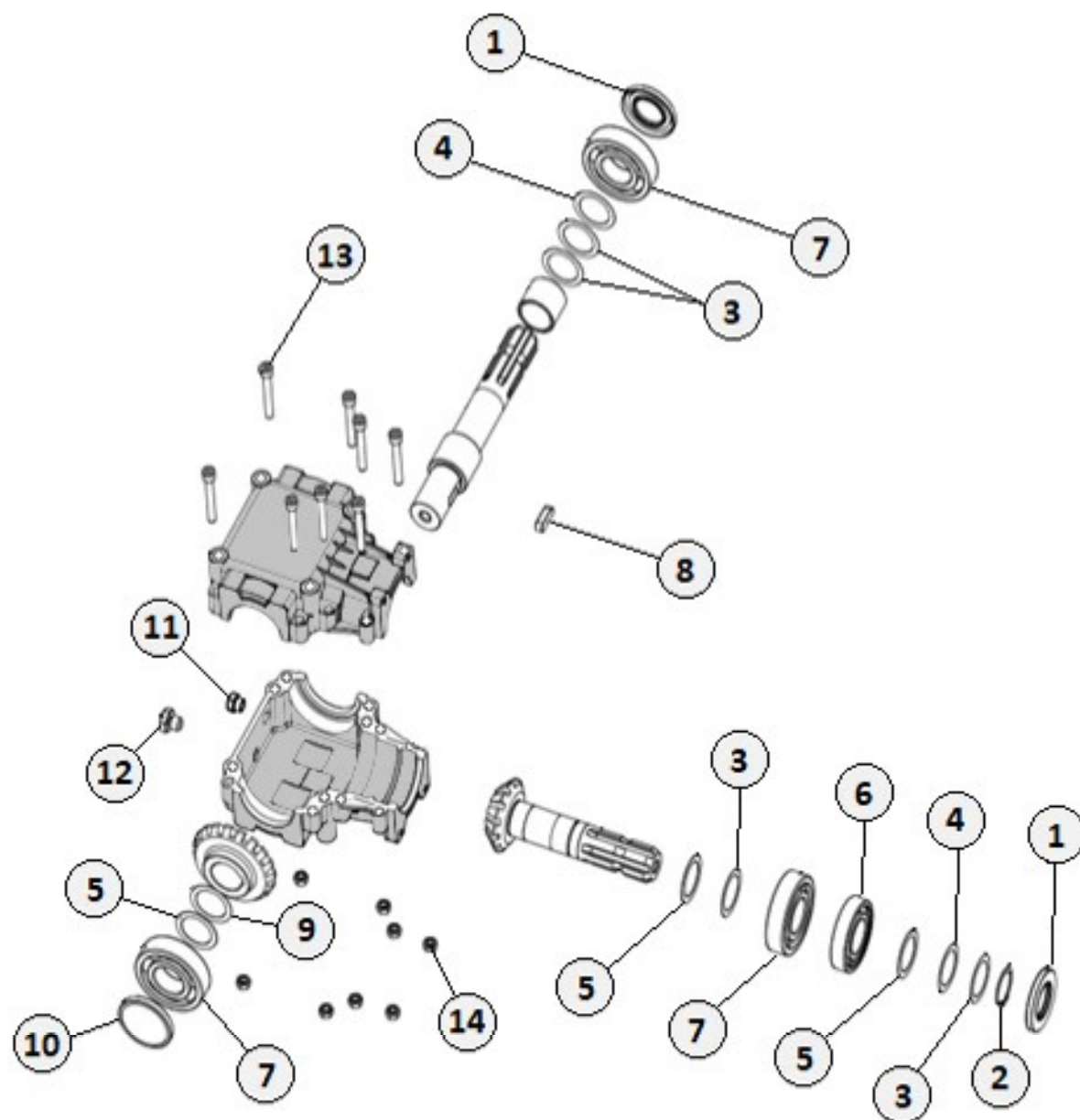
# SIDE DRIVE COMPONENTS



| Item | Part #  | Description               | QTY |
|------|---------|---------------------------|-----|
| 1    | SK36001 | CHAIN COVER               | 1   |
| 2    | SK14257 | OIL LEVEL GAUGE 3/8"      | 1   |
| 3    | SK14311 | BREATHER PLUG 3/8"        | 1   |
| 4    | SK24117 | HEX BOLT M8 X 1.25 X 20   | 14  |
| 5    | SK1297  | NYLOCK NUT M8 X 1.25      | 14  |
| 6    | SK36043 | HEX BOLT M12 X 1.75 X 60  | 1   |
| 7    | SK17273 | HEX NUT M12 X 1.75        | 3   |
| 8    | SK36040 | CHAIN COVER GASKET        | 1   |
| 9    | SK36041 | CHAIN 0.75" PITCH 52-LINK | 1   |
| 10   | SK33006 | GUK SELF LOCK NUT M25     | 2   |
| 11   | SK36015 | SPROCKET 26 TOOTH         | 1   |
| 12   | SK6024  | CIRCLIP EXTERNAL 35mm     | 2   |
| 13   | SK36044 | HEX BOLT M12 X 1.75 X 90  | 1   |

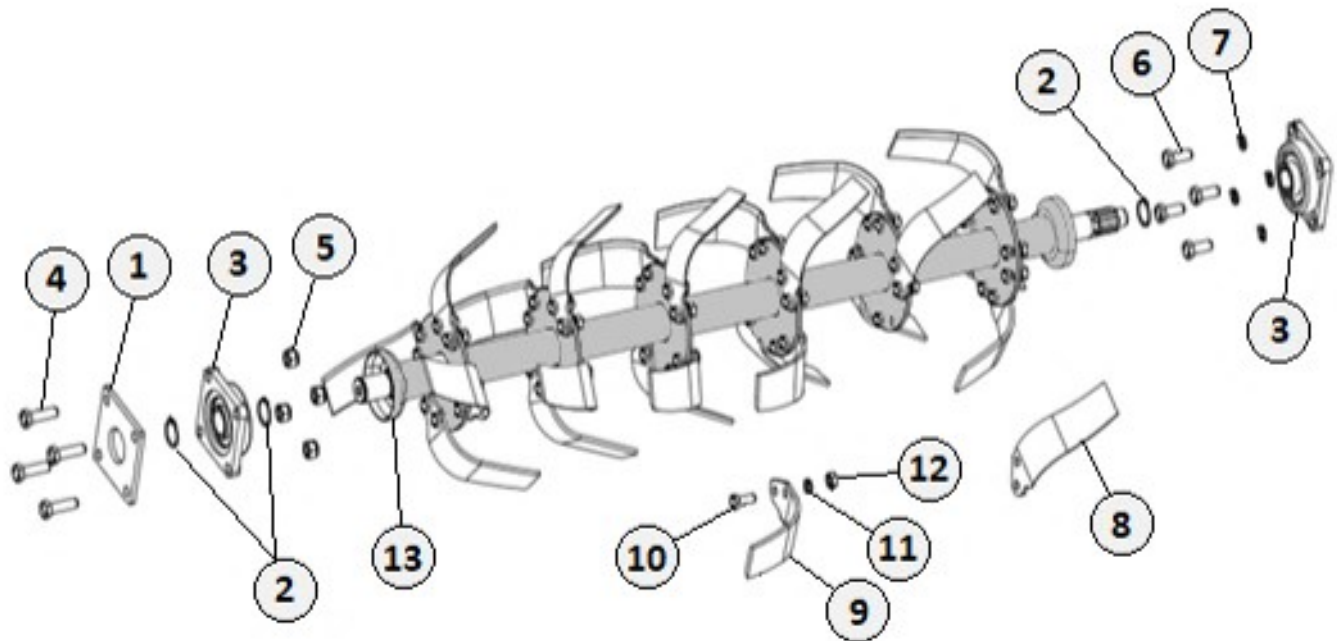
| Item | Part#   | Description           | QTY |
|------|---------|-----------------------|-----|
| 14   | SK36011 | TENSIONER STOP        | 1   |
| 15   | SK36017 | SUPPORT PLATE         | 1   |
| 16   | SK36031 | TENSIONER RING        | 1   |
| 17   | SK36034 | OIL SEAL 35 X 80 X 8  | 1   |
| 18   | SK1231  | NYLOCK NUT M16 X 2    | 2   |
| 19   | SK36038 | BEARING GASKET        | 1   |
| 20   | SK14363 | LOCK WASHER M14       | 4   |
| 21   | SK17810 | HEX BOLT M14 X 2 X 35 | 4   |
| 22   | SK36049 | LOCK NUT W/O-RING     | 1   |
| 23   | SK36014 | SPROCKET 17 TOOTH     | 1   |
| 24   | SK36016 | UCFL SUPPORT PLATE    | 1   |
| 25   | SK36035 | OIL SEAL 35 X62 X 7   | 1   |
| 26   | SK36039 | BEARING GASKET        | 1   |

# TOP GEARBOX COMPONENTS



|    | PART #  | DESCRIPTION               | Qty |
|----|---------|---------------------------|-----|
| 1  | SK36035 | OIL SEAL 35 X 62 X 7      | 2   |
| 2  | SK6024  | CIRCLIP EXTERNAL 35mm     | 1   |
| 3  | SK36002 | SHIM 48 X 35.5 X 0.10     | 4   |
| 4  | SK36003 | SHIM 48 X 35.5 X 0.20     | 2   |
| 5  | SK36026 | SHIM 48 X 35.5 X 1.00     | 3   |
| 6  | SK10143 | BEARING 6207              | 1   |
| 7  | SK1131  | BEARING 6307              | 3   |
| 8  | SK36066 | PARALLEL KEY 10 X 8 X 30  | 1   |
| 9  | SK36004 | SHIM 48 X 35.5 X 0.50     | 1   |
| 10 | SK14075 | OIL SEAL 62 X 7           | 1   |
| 11 | SK14313 | OIL LEVEL GAUGE 1/4"      | 1   |
| 12 | SK3323  | 1/4" BSP BOLT WITH O-RING | 1   |
| 13 | SK18048 | ALLEN BOLT M8 X 125 X 60  | 8   |
| 14 | SK8181  | HEX NUT M8 X 1.25         | 8   |

# ROTOR ASSEMBLY COMPONENTS

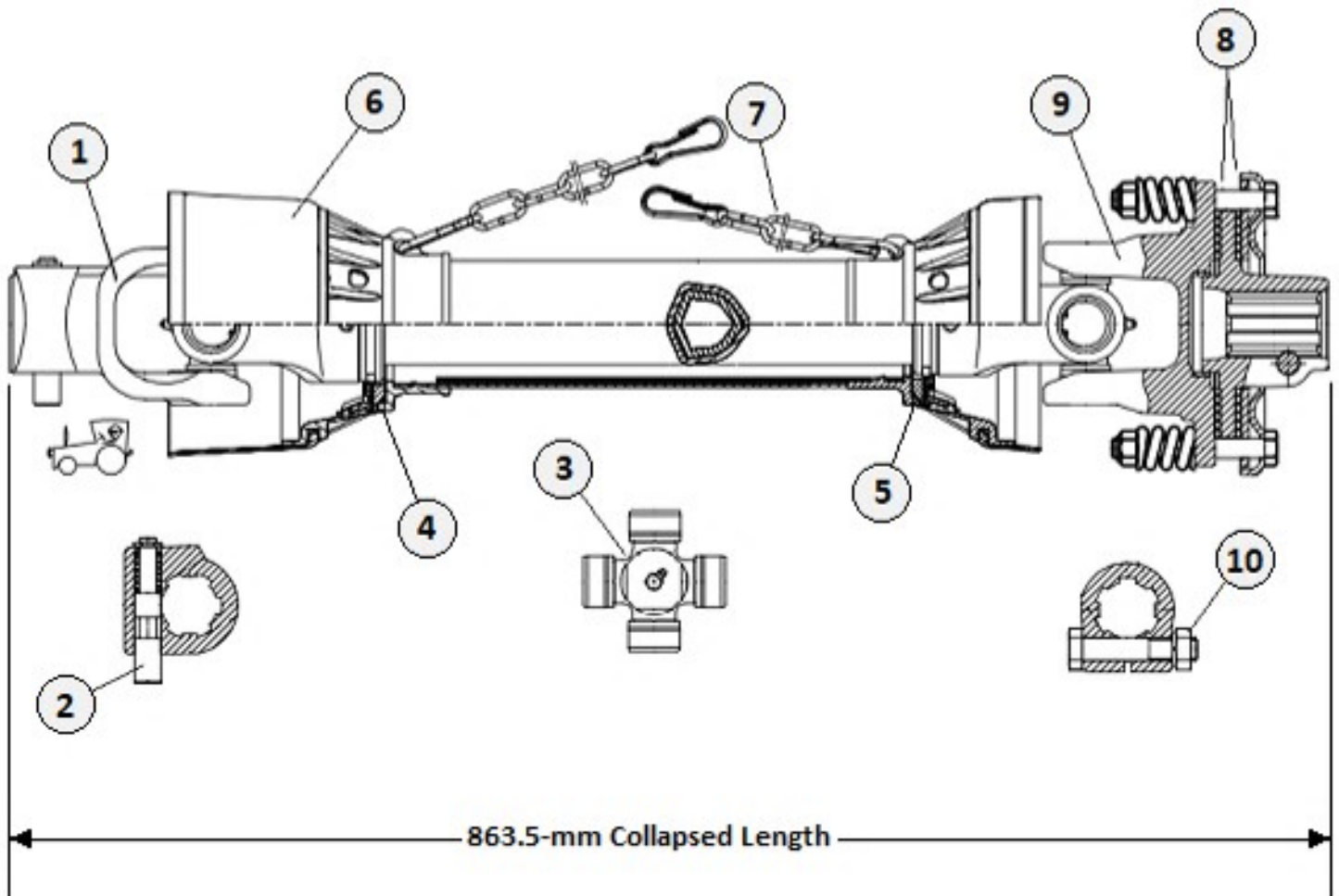


|    | <b>PART #</b> | <b>DESCRIPTION</b>       | <b>Qty</b> |
|----|---------------|--------------------------|------------|
| 1  | SK36018       | UCF SUPPORT PLATE        | 1          |
| 2  | SK6024        | CIRCLIP EXTERNAL 35mm    | 3          |
| 3  | SK36036       | SQ. FLANGE BEARING       | 2          |
| 4  | SK36046       | HEX BOLT M14 X 2.0 X 50  | 4          |
| 5  | SK1574        | NYLOCK NUT M14 X 2.0     | 4          |
| 6  | SK17810       | HEX BOLT M14 X 2.0 X 35  | 4          |
| 7  | SK14363       | LOCK WASHER M14          | 4          |
| 8  | SK36072       | RH C-TINE                | 12         |
| 9  | SK36071       | LH C-TINE                | 12         |
| 10 | SK17275       | HEX BOLT M12 X 1.75 X 30 | 48         |
| 11 | SK14362       | LOCK WASHER M12          | 48         |
| 12 | SK17273       | HEX NUT M12 X 1.75       | 48         |
| 13 | SK36009       | ROTOR WELDMENT           | 1          |



# SLIPCLUTCH DRIVELINE COMPONENTS

## FITS 4' - 5' - 6' TILLER



| Item           | Part #  | Description                               | Qty |
|----------------|---------|---|-----|
| 1              | 552000  | Tractor Yoke 1-3/8" 6-Spline              | 1   |
| 2              | 552001  | Push Pin Kit                              | 1   |
| 3              | 552003  | Cross Kit 27 x 74.6                       | 1   |
| 4              | 552008  | Outer Plastic Shield Bearing              | 1   |
| 5              | 552009  | Inner Plastic Shield Bearing              | 1   |
| 6              | *552002 | Complete Safety Shield                    | 1   |
| 7              | 552005  | Safety Chain                              | 2   |
| 8              | 552010  | Clutch Lining (2-Pack)                    | 1   |
| 9              | 552011  | Complete Slipclutch                       | 1   |
| 10             | 552012  | Bolt M12 x 70 W/Nut                       | 1   |
| <b>*210046</b> |         | <b>Complete Driveline with Slipclutch</b> |     |

\*May need to cut to length to fit certain 4 & 5-ft applications