

IRONCRAFT

Contact your Authorized Ironcraft Dealer
for all your parts needs

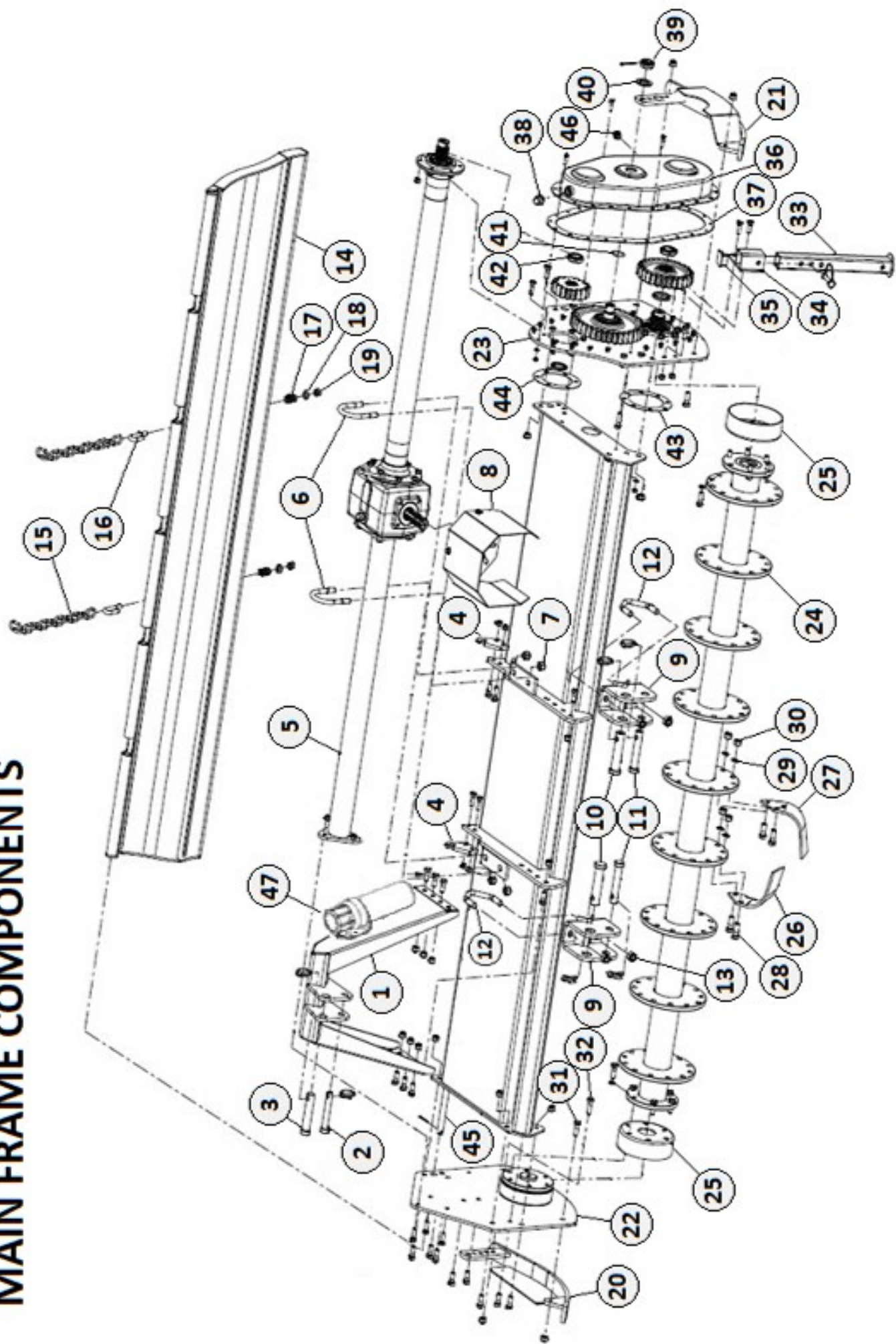


UH SERIES ROTARY TILLER PARTS MANUAL

Specifications

		UH2.1 (UH84) MODEL
Overall dimensions	mm	2292 x 1055 x 795
Tilling width	in	84"
	cm	214
Recommended Tractor HP range	HP	50-65
3-point Hitch type	-	Cat. I and II
Number of Flanges on Rotor	No.	9
Total Number of tines on Rotor	No.	54
PTO Input speed	rpm	540
Rotor Shaft Speed	rpm @540	241
Standard Tine Construction	-	curved
Transmission type	-	gear
Max Working depth	cm	19
Rotor tube diameter	mm	89
Rotor Swing Diameter	mm	480
Driveline safety device	-	slip clutch
Weight (driveline not included)	lbs	990
	kg	450

MAIN FRAME COMPONENTS

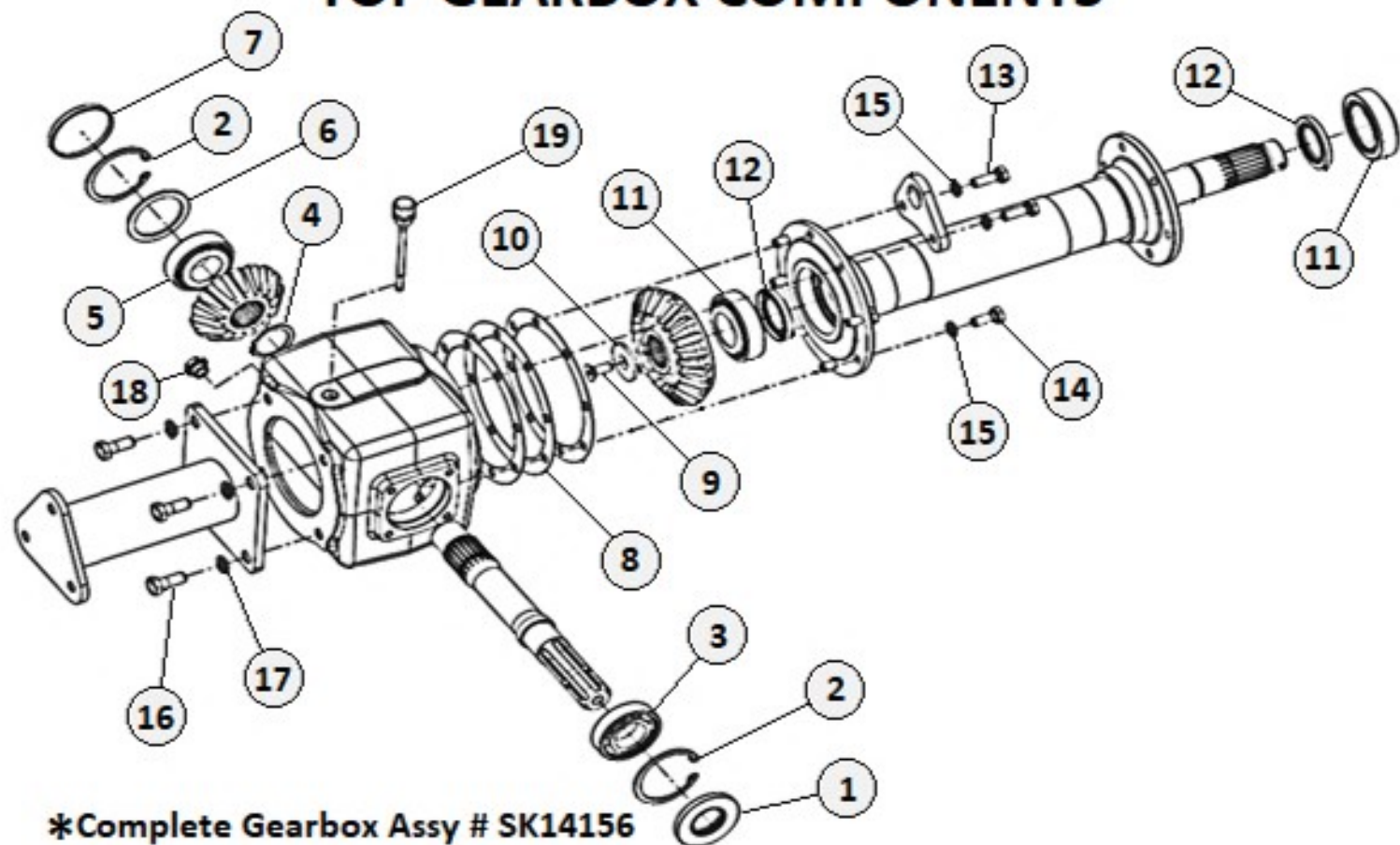


MAIN FRAME COMPONENTS

Item	Part #	Description	QTY
1	SK14165	TOP MAST	1
2	SK1214	TOP HITCH PIN CAT-I	1
3	SK1215	TOP HITCH PIN CAT-II	1
4	SK14259	CHAIN LIFT HOOK	2
5	SK14156	TOP GEARBOX ASSY	1
6	SK14167	U-BOLT M14	2
7	SK1574	NYLOCK NUT M14 X 2	4
8	SK1547	PTO SHIELD	1
9	SK14166	LOWER HITCH BRACKET	2
10	SK1217	BOTTOM HITCH PIN CAT-II	2
11	SK1216	BOTTOM HITCH PIN CAT-I	2
12	SK14169	V-BOLT M16	2
13	SK1231	NYLOCK NUT M16 X 2	4
14	SK14151	TAILGATE	1
15	SK14073	LIFTING CHAIN	2
16	SK14004	J-BOLT M12	2
17	SK14005	J-BOLT SPRING	2
18	SK8126	PLAIN WASHER 12mm	2
19	SK1209	NYLOCK NUT M12 X 1.75	2
20	SK14163	RH SKID SHOE	1
21	SK14164	LH SKID SHOE	1
22	SK14159	RH SIDE PLATE ASSY	1
23	SK14158	LH SIDE PLATE	1

Item	Part#	Description	QTY
24	SK14152	ROTOR	1
25	SK14130	DUST COVER	2
26	SK3127	RH C-TINE	27
27	SK3126	LH C-TINE	27
28	SK14337	HEX BOLT M14 X 1.5 X 40	108
29	SK1307	LOCKWASHER 14mm	108
30	SK14338	HEX NUT M14 X 1.5	108
31	SK17274	HEX BOLT M12 X 1.75 X 35	A/R
32	SK3343	HEX BOLT M12 X 1.50 X 35	A/R
33	SK14105	STAND	1
34	SK14104	STAND HOLDER	1
35	SK4657	SQ. PLASTIC CAP 40mm	1
36	SK14160	SIDE COVER	1
37	SK14173	SIDE COVER GASKET	1
38	SK14310	BREATHER PLUG 1/2"	1
39	SK8032	CASTLE NUT 28mm	1
40	SK14161	SPACER 30 X 50 X 4	1
41	SK4663	O-RING M35 X 3.5	1
42	SK1449	NYLOCK NUT M35 X 1.50	2
43	SK14135	HOUSING GASKET	1
44	SK14176	FLANGE GASKET	1
45	SK14168	TAILGATE ROD	1
46	SK14314	OIL LEVEL GAUGE 3/8"	1
47	SK26030	DOCUMENT HOLDER	1

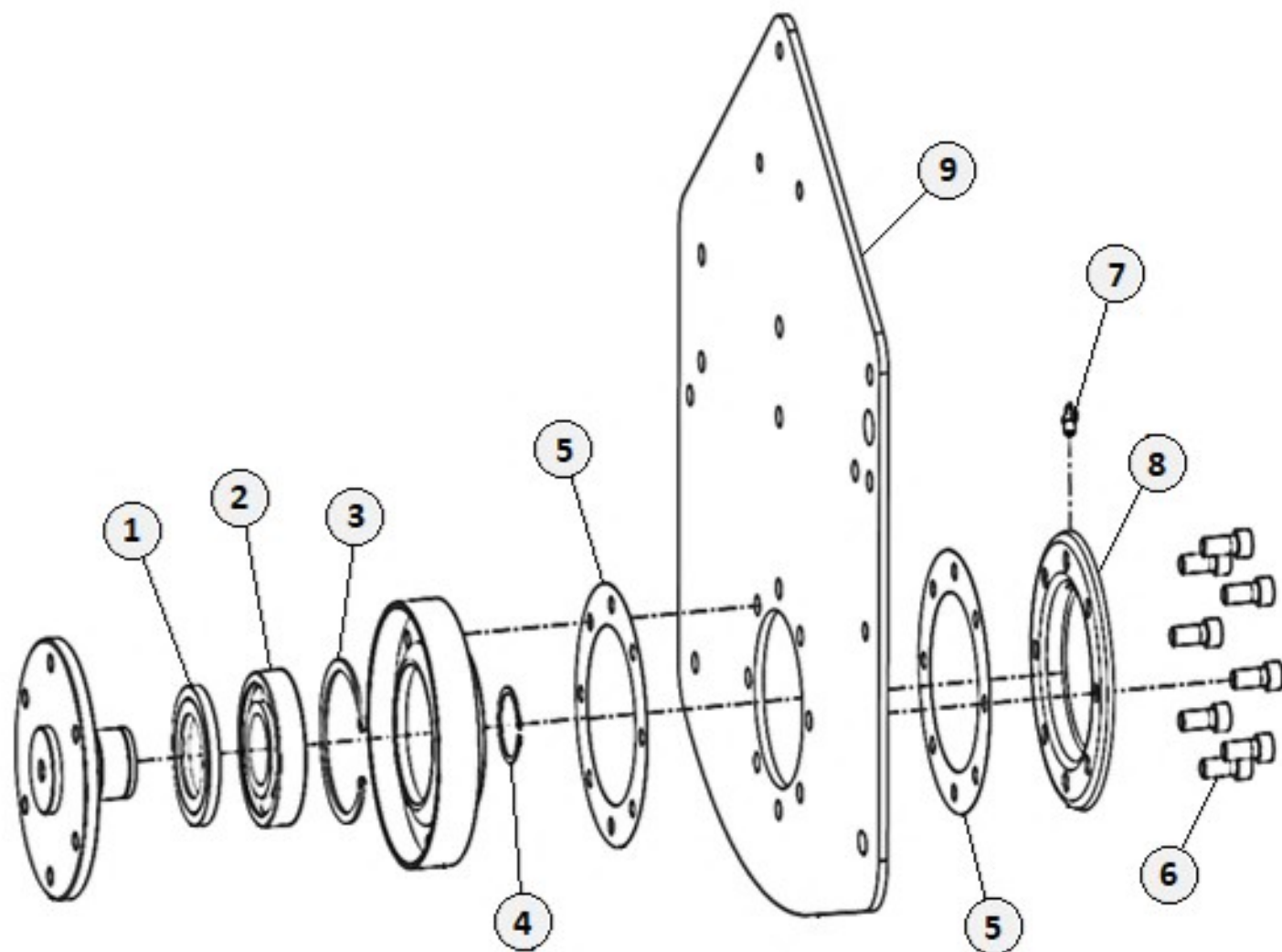
TOP GEARBOX COMPONENTS



*Complete Gearbox Assy # SK14156

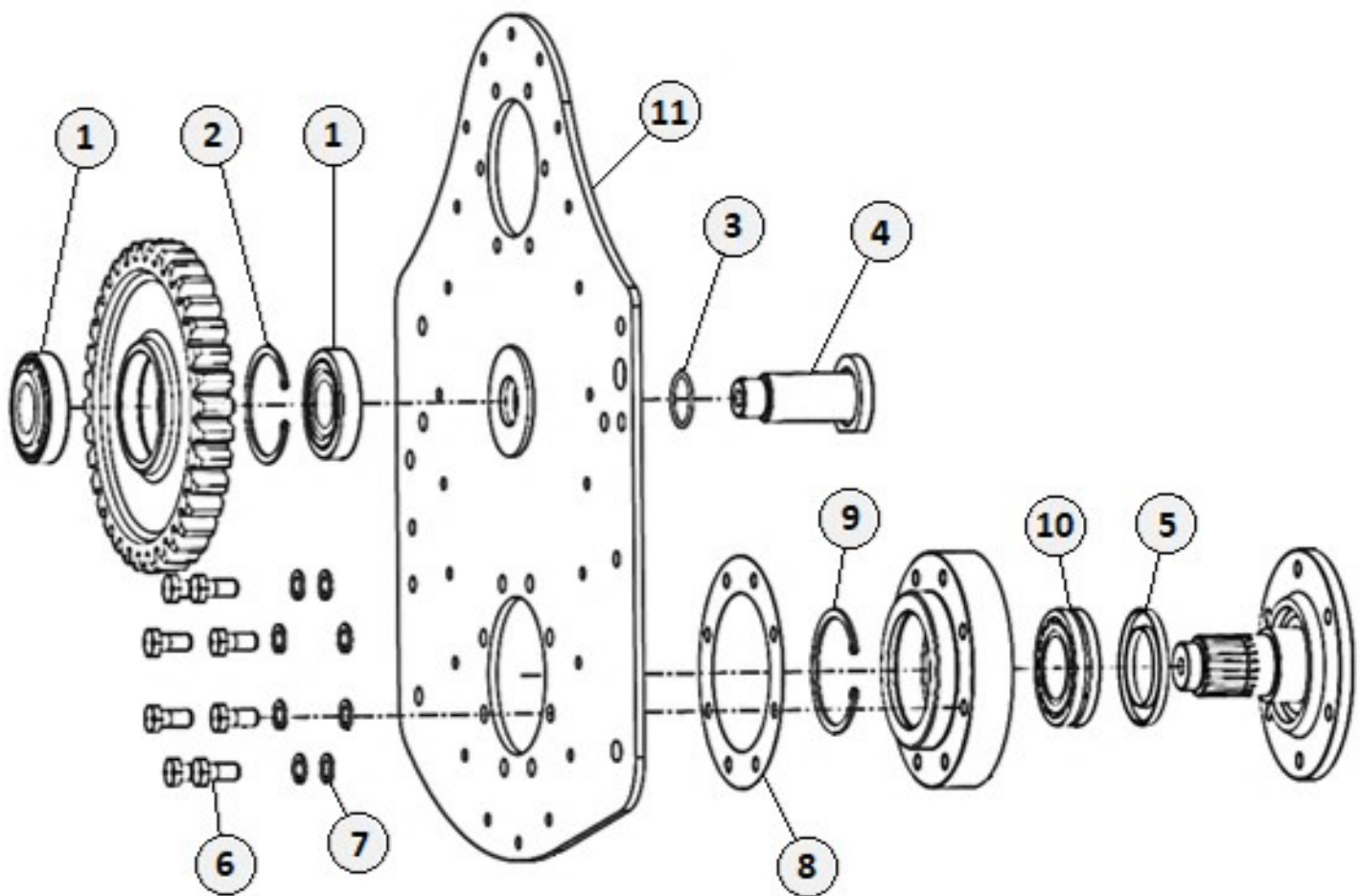
	PART #	DESCRIPTION	Qty
1	SK14309	OIL SEAL 35 X 72 X 8	1
2	SK1002	CIRCLIP INTERNAL 72mm	2
3	SK10143	BEARING 6207	1
4	SK8027	CIRCLIP EXTERNAL 40mm	1
5	SK14155	BEARING 32207	1
6	SK14120	SPACER 71.50 X 56 X 3	1
7	SK14119	OIL SEAL PLUG 72 X 8	1
8	SK14174	FLANGE GASKET 0.4mm	A/R
9	SK14058	CSK BOLT M10 X 1.5 X 25	1
10	SK14049	CROWN WASHER	1
11	SK14149	BEARING 32208	2
12	SK14121	OIL SEAL 40 X 62 X 7	2
13	SK3340	HEX BOLT M10 X 1.50 X 30	2
14	SK17270	HEX BOLT M10 X 1.50 X 25	6
15	SK1304	LOCK WASHER 10mm	8
16	SK17275	HEX BOLT M12 X 1.75 X 30	4
17	SK1306	LOCK WASHER 12mm	4
18	SK14312	DRAIN PLUG 3/8"	1
19	SK14315	BREATHER DIPSTICK 116mm X 16 X 1.5	1

RH END PLATE COMPONENTS



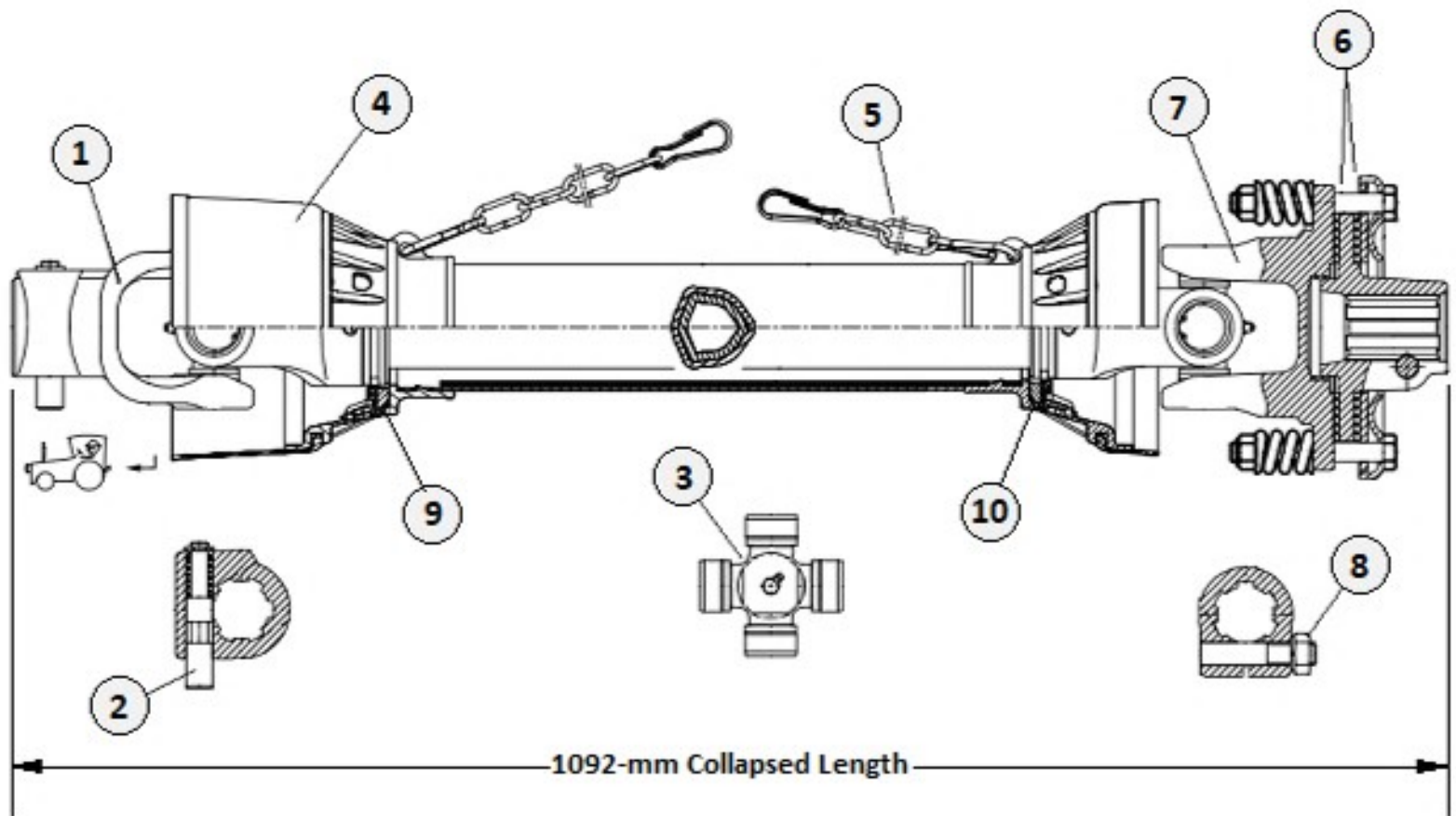
	PART #	DESCRIPTION	Qty
1	SK14122	OIL SEAL 55 X 90 X 10	1
2	SK1073	BEARING 6309 LU	1
3	SK1074	CIRCLIP INTERNAL 100mm	1
4	SK2089	CIRCLIP EXTERNAL 45mm	1
5	SK14135	HOUSING GASKET	2
6	SK17027	ALLEN BOLT M12 X 1.75 X 30	8
7	SK1253	1/8 GREASE ZERK 7.5mm	1
8	SK14102	END COVER	1
9	SK14159	RH END PLATE COMPLETE ASSY	1

LH END PLATE COMPONENTS



	PART #	DESCRIPTION	Qty
1	SK14177	BEARING 30307	2
2	SK1130	CIRCLIP INTERNAL 80mm	1
3	SK4663	O-RING M35 X 3.5	1
4	SK14148	STUB SHAFT	1
5	SK14128	OIL SEAL 85 X 55 X 8	1
6	SK17275	HEX BOLT M12 X 1.75 X 30	8
7	SK1306	LOCK WASHER 12mm	8
8	SK14135	HOUSING GASKET	1
9	SK1049	CIRCLIP INTERNAL 85mm	1
10	SK8268	BEARING 22209	1
11	SK14158	LH END PLATE COMPLETE ASSY	1

SLIPCLUTCH DRIVELINE COMPONENTS



Item	Part #	Description	Qty
1	552000	Tractor Yoke with Push Pin 1-3/8" 6-S	1
2	552001	Push Pin Kit	1
3	552003	Cross Kit 27 x 74.6	2
4	552030	*Complete Safety Shield	1
5	552005	Safety Chain	2
6	552031	Clutch Lining (2-Pack)	1
7	552032	Complete Slipclutch	1
8	552033	Eccentric Pin with Nut	1
9	552034	Outer Plastic Shield Bearing	1
10	552035	Inner Plastic Shield Bearing	1
	120012	*Complete Slipclutch Driveline	

*May need to cut driveline shorter to fit 4-ft & 5-ft Applications