

IRONCRAFT

Contact your Authorized Ironcraft Dealer
for all your parts needs



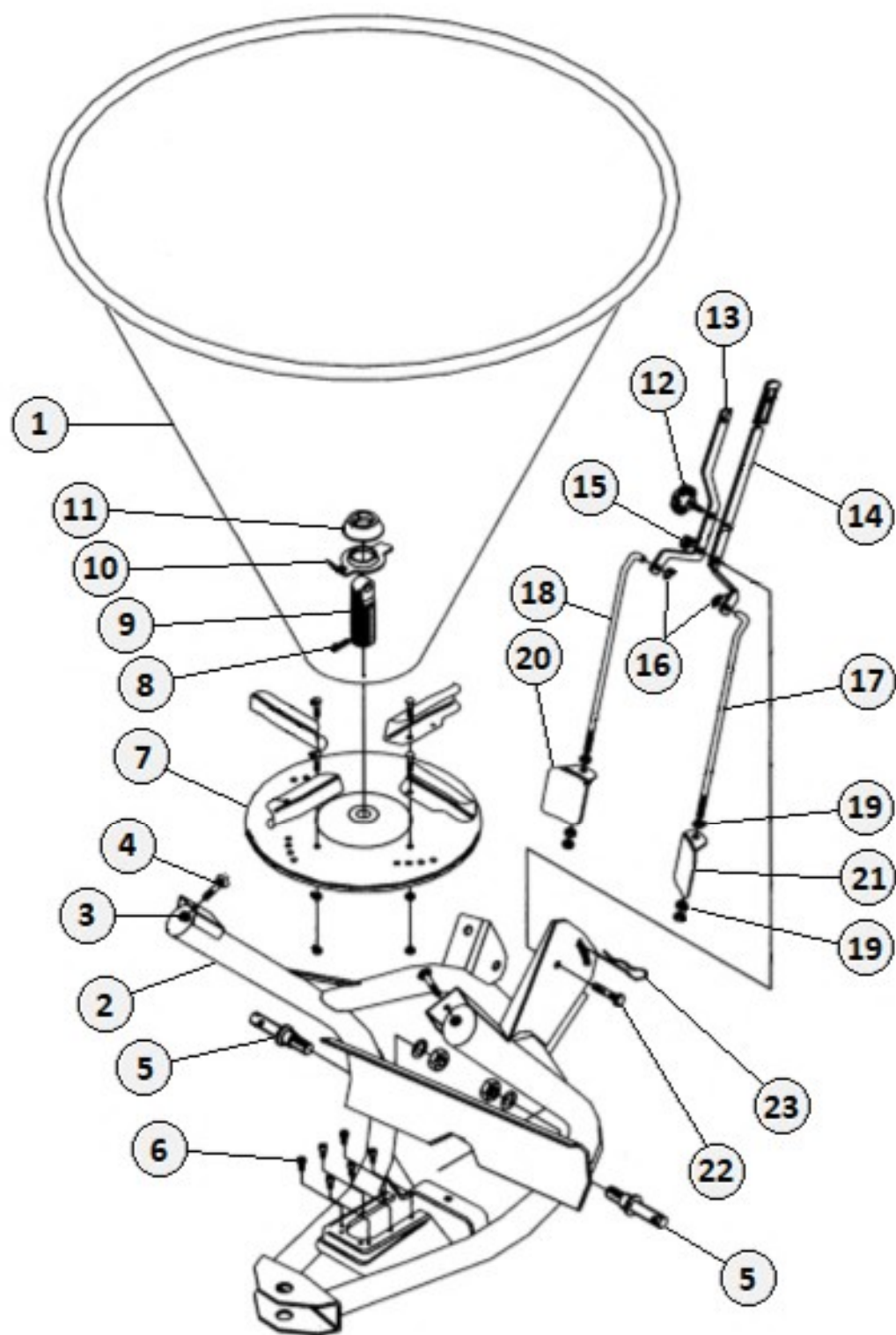
POLY HOPPER

9510 / 9520 SERIES SEEDER - SPREADER PARTS MANUAL

Hopper & Frame Components

8. PARTS BREAKDOWN

Table 01



Hopper & Frame Components

8. PARTS BREAKDOWN

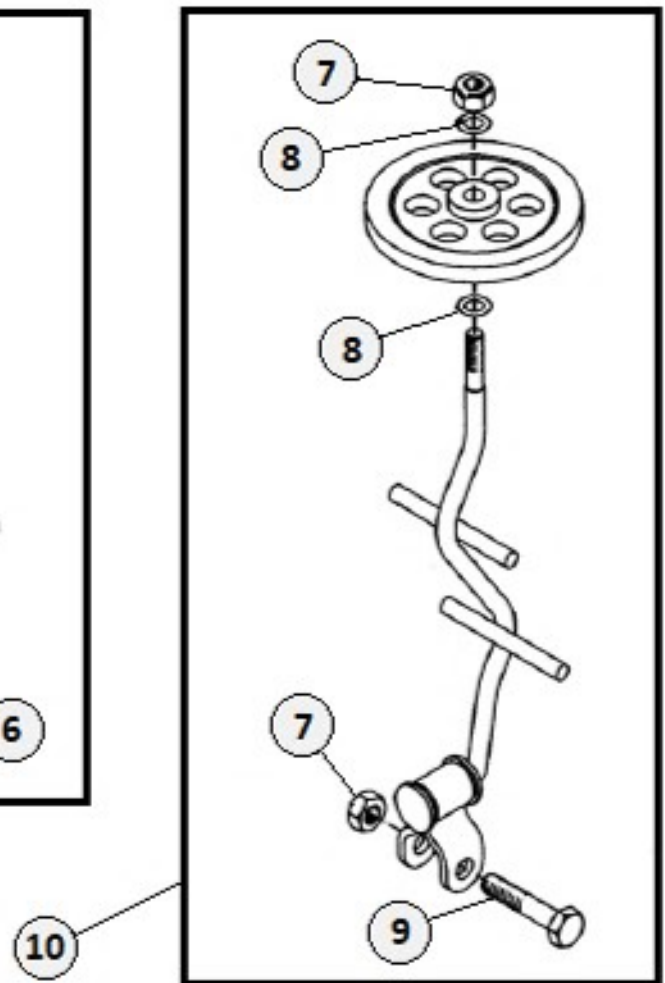
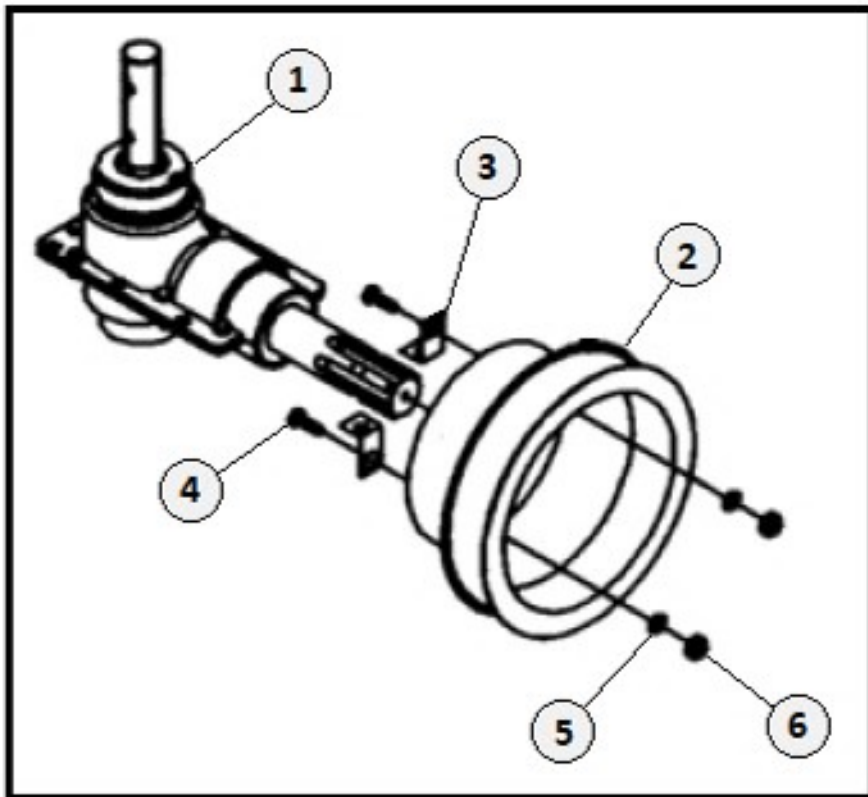
Table 01

Item	Part #	Description	Qty
1	609.013	Hopper-500 (Specify whether Poly or Steel)	A/R
	609.008	Hopper-180 (Specify whether Poly or Steel)	A/R
2	613.003	Frame without Lower Link Pins NOT Sold Separately	1 N/A
3	301.010	Nut M10	* 2
4	300.023	Round Head Screw M10 x 20	* 2
5	633.001	Lower Link Pin CAT-I	* 2
6	300.014	Cheese Headed Screw M8 x 16	6
7	610.001	Spreader Disc with Vanes	1
8	305.001	Spring "Roll" Pin M8 x 40	1
9	330.001	Entrainer – Drive Stem	1
10	619.002	Lower Agitator	1
11	304.013	Rubber Ring	1
12	302.003	Lever Lock Knob	1
13	604.001	Right Lever	1
14	604.002	Left Lever	1
15	301.008	Self-Locking Nut M12	* 1
16	303.009	Washer M10.5 x 21	* 2
17	602.002	Left Tie Rod	1
18	602.001	Right Tie Rod	1
19	301.014	Nut M10	6
20	605.003	Right Shutter	1
21	605.004	Left Shutter	1
22	300.024	Hex Head Cap Screw M12 x 35	* 1
23	307.001	Hairpin M4.5	* 1

A/R = As Required

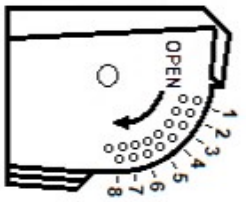
* OL = Obtain Locally

Gearbox & Agitator



Item	Part #	Description	Qty
1	322.002	Gearbox	1
2	304.006	CE PTO/Gearbox Shield	1
3	606.012	Bracket for Gearbox Shield	2
4	300.026	Bolt M6 x 16	* 2
5	303.007	Washer M8 x 17	* 2
6	301.009	Self-Locking Nut M6	* 2
7	301.008	Self-Locking Nut M12	* 2
8	303.026	Washer M13 x 25	* 2
9	300.025	Bolt M12 x 55	* 1
10	950MAG	Agitator Assy – for Metal Hopper	A/R
	950PAG	Agitator Assy – for Poly Hopper	A/R

* OL = Obtain Locally



SPREADING CHART

SPREADING CHART FOR FERTILIZER

TRACTOR SPEED (MPH)	WORKING WIDTH (FEET)	Quantity Spread in Lbs / Acre at Various Gate Settings							
		2	3	4	5	6	7	8	8.5

LARGE GRANULAR FERTILIZER	2.5	—	132	245	402	635	929	1014	1140	1248
GRANULAR FERTILIZER	5.0	—	66	123	201	318	465	507	570	624
FERTILIZER	7.5	—	44	82	134	212	310	338	380	416
MEDIUM GRANULAR FERTILIZER	2.5	—	—	311	448	709	925	1025	1118	1182
GRANULAR FERTILIZER	5.0	—	—	156	224	355	463	513	559	591
FERTILIZER	7.5	—	—	104	149	237	309	342	373	394
FINE GRANULAR FERTILIZER	2.5	—	112	189	322	529	747	842	963	1051
GRANULAR FERTILIZER	5.0	—	56	95	166	265	374	421	482	526
FERTILIZER	7.5	—	37	63	111	177	249	280	321	351
CRYSTAL (AMMON, SILPHATE)	2.5	—	226	368	560	890	1236	1354	1522	1632
(AMMON, SILPHATE)	5.0	—	113	184	280	445	618	677	761	861
FERTILIZER	7.5	—	75	123	187	297	412	451	507	544
THOMAS MEAL (BASIC SLAG)	4.0	—	—	571	—	—	1270	—	1685	—
(BASIC SLAG)	8.0	—	—	286	—	—	635	—	843	—

SPREADING CHART FOR SEED

TRACTOR SPEED (MPH)	WORKING WIDTH (FEET)	Quantity Spread in Lbs / Acre at Various Gate Settings							
		5	6	7	8				

WHEAT	3	—	52	0	46	129	268
WHEAT	5	—	—	0	28	77	151
WHEAT	7	—	—	0	20	55	115
ALFALFA & CLOVER	3	—	31	43	163	340	545
ALFALFA & CLOVER	5	—	—	25	96	204	387
ALFALFA & CLOVER	7	—	—	19	70	146	277
FESCUE & RYEGRASS	3	—	19	0	0	85	161
FESCUE & RYEGRASS	5	—	—	0	0	51	97
FESCUE & RYEGRASS	7	—	—	0	0	36	59
RED CLOVER	3	—	31	44	157	333	542
RED CLOVER	5	—	—	26	100	200	385
RED CLOVER	7	—	—	19	72	143	275
KENTUCKY BLUE GRASS & BERMUDA GRASS	3	—	12	30	131	311	550
KENTUCKY BLUE GRASS & BERMUDA GRASS	5	—	—	18	78	186	396
KENTUCKY BLUE GRASS & BERMUDA GRASS	7	—	—	13	56	133	283
SUDAN GRASS	3	—	52	0	49	131	271
SUDAN GRASS	5	—	—	0	29	79	153
SUDAN GRASS	7	—	—	0	21	56	116
BARLEY	3	—	49	0	25	81	186
BARLEY	5	—	—	0	15	49	111
BARLEY	7	—	—	0	11	35	80
RYE	3	—	40	0	25	81	186
RYE	5	—	—	0	15	49	111
RYE	7	—	—	0	11	35	80