



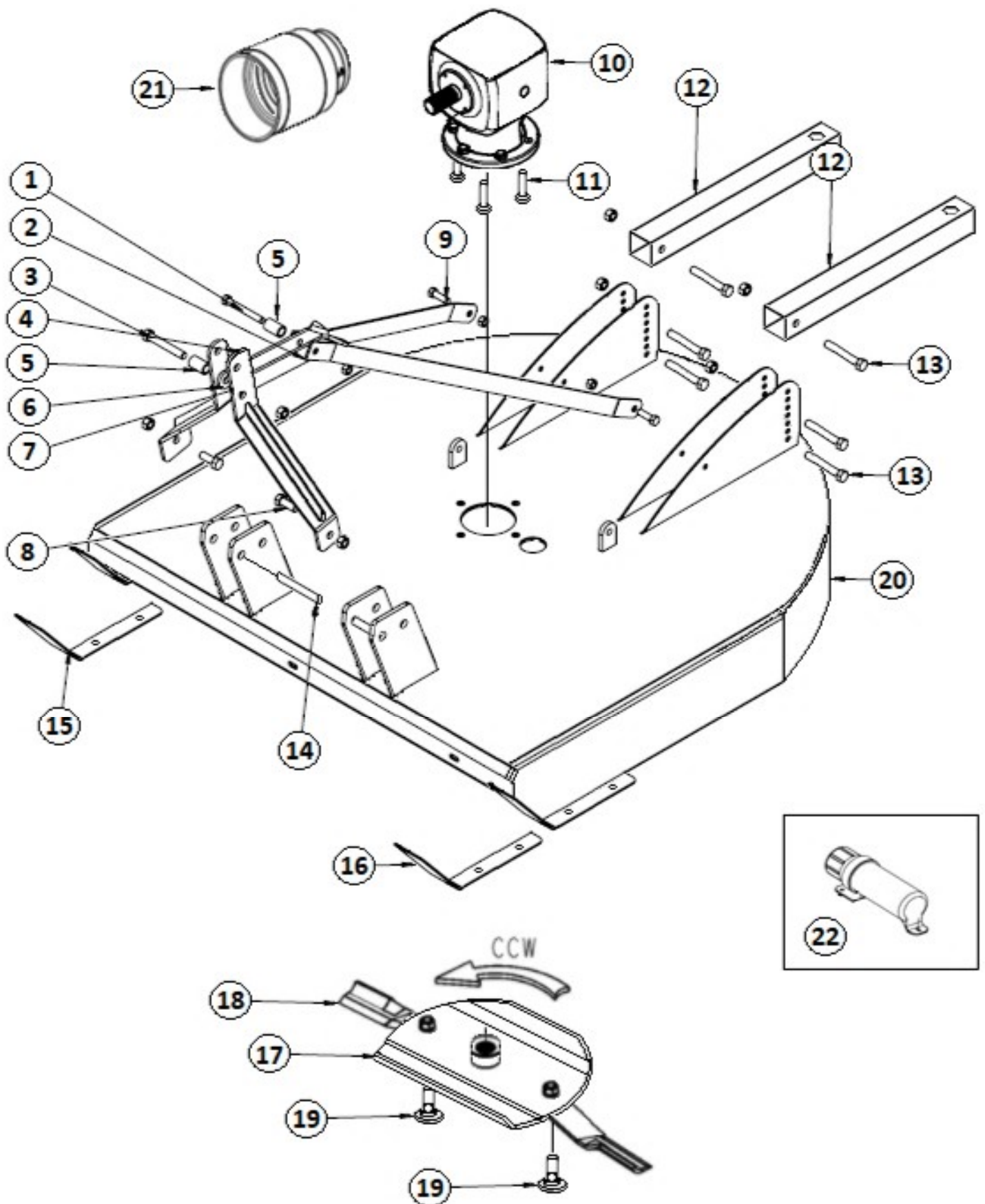
IRONCRAFT

Contact your Authorized Ironcraft Dealer
for all your parts needs



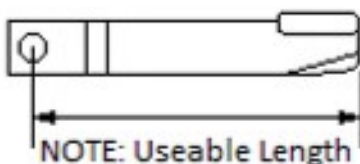
970 SERIES ROTARY CUTTER PARTS MANUAL

Deck Components



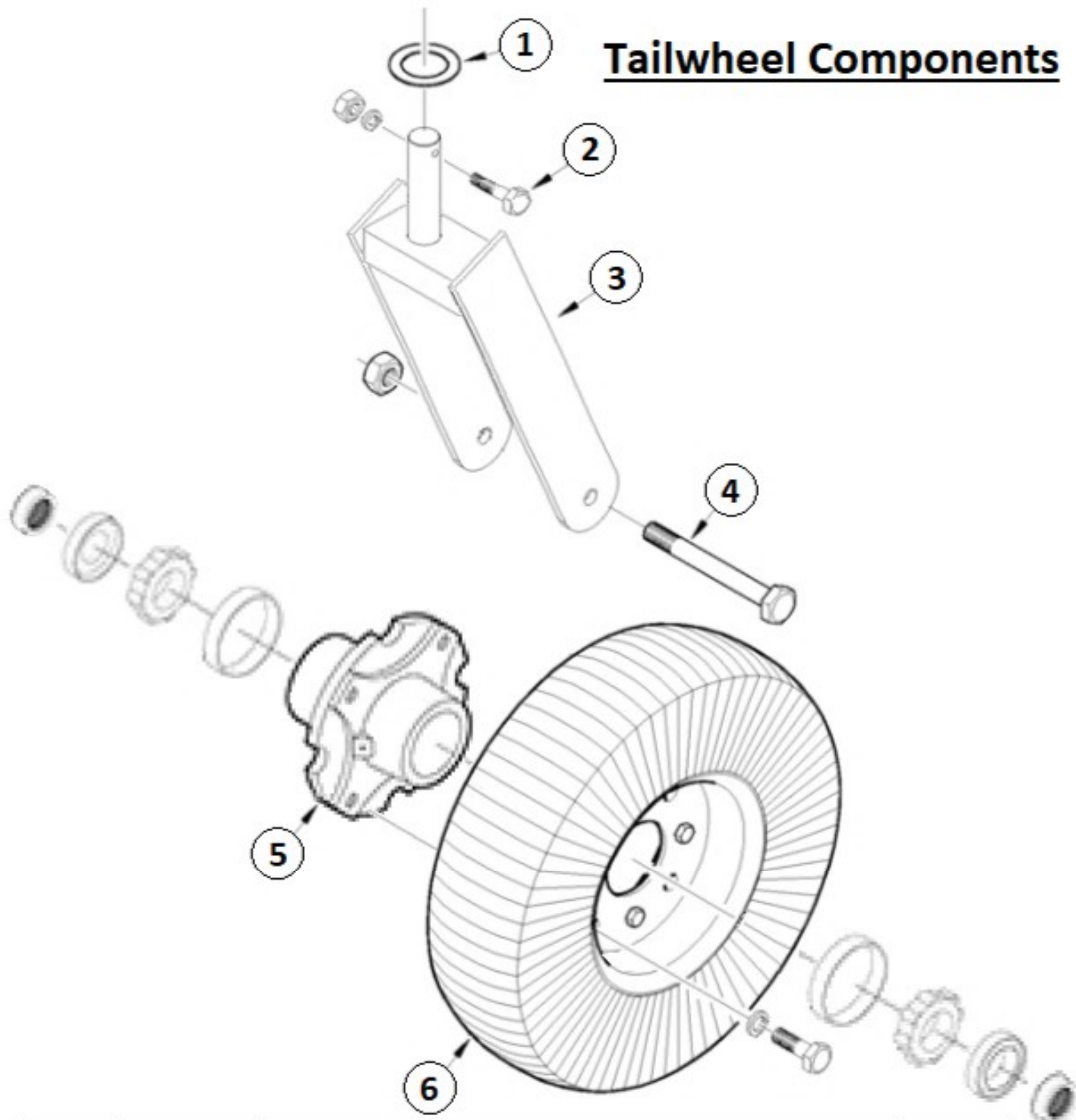
Deck Components

Item	Part #	Description	Qty
1	140004	BOLT & LOCK NUT KIT 5/8" X 5"	1
2	970008	BACK BRACE 3/8" x 2" x 55"	2
3	140018	BOLT & LOCK NUT KIT 3/4" X 5"	1
4	970002	A-FRAME – FRONT STRUT	1
5	110030	TOP LINK SPACER	2
6	120032	RH-KNUCKLE	1
7	120006	LH-KNUCKLE	1
8	150034	A-FRAME BOLT & LOCKNUT KIT 3/4" X 2-1/2"	2
9	120009	BACK BRACE BOLT & NUT KIT 1/2" X 1-1/2"	2
10	191512	GEARBOX - COMPLETE	1
11	110068	GEARBOX BOLT & NUT KIT 3/4" X 3"	1
12	970017	TAILWHEEL TUBE	2
13	120003	BOLT & LOCK NUT KIT 1/2" X 4-1/2"	6
14	150033	LIFT PIN Cat. II	2
	310032	LYNCH PIN 3/8"	2
15	970004	RH-SKID SHOE	1
16	970003	LH-SKID SHOE	1
	120011	CARRIAGE BOLT & NUT KIT (6-Pack) 1/2" X 1-1/2"	2
17	970001	BLADE CARRIER-FORMED	1
18	T-84HD	CUTTER BLADES (Sold as a Pair) Useable Length 28-3/8"	1
19	110012	BLADE BOLT KIT (Sold as a Pair)	1
20	970030	7' DECK SKIN – RED	A/R
	970031	7' DECK SKIN – GREEN	A/R
	970032	7' DECK SKIN – ORANGE	A/R
	970033	7' DECK SKIN – BLUE	A/R
	970034	7' DECK SKIN – GREY	A/R
	970035	7' DECK SKIN – YELLOW	A/R
21	150076	GEARBOX SHIELD	1
	110006	BOLT & WASHER KIT 5/16" X 1/2" (4-Pack)	1
22	110034	MANUAL HOLDER W/ SCREWS	1



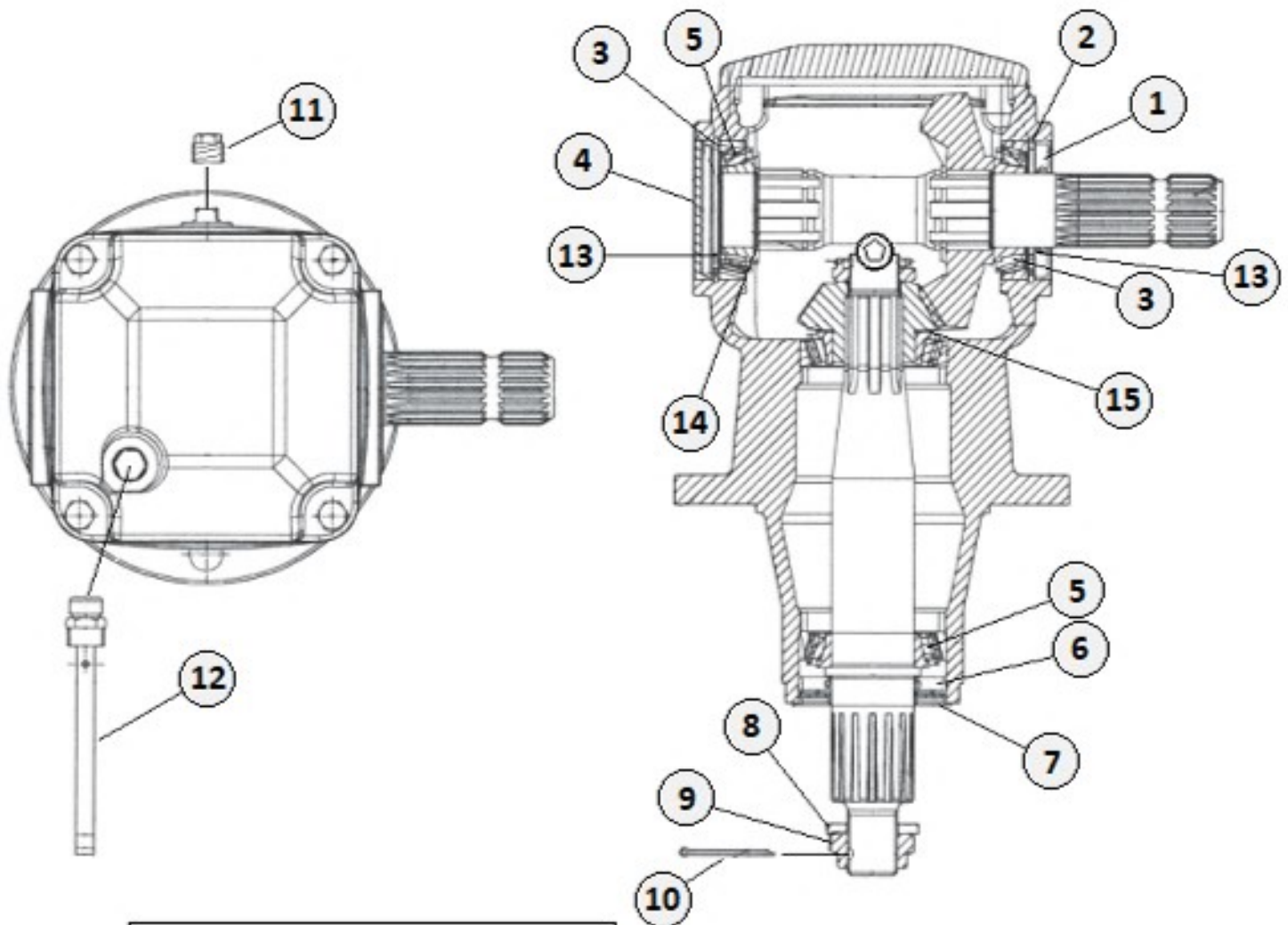
NOTE: Uses 1-11/16" Socket size for Blade Bolt Nut

Tailwheel Components



Item	Part #	Description	Qty
1	110019	TAILWHEEL TUBE FLATWASHER 1-1/4"	1
2	110070	BOLT & NUT KIT 1/2" X 2-1/2" Gr. 2	1
3	970018	TAILWHEEL FORK	1
4	970023	AXLE BOLT & NUT KIT 1" X 8"	1
5	150031	H.D. WHEEL HUB WITH SPACERS	1
6	110022	LAMINATED TAIL WHEEL	1
	970052	COMPLETE TAILWHEEL ASSEMBLY	

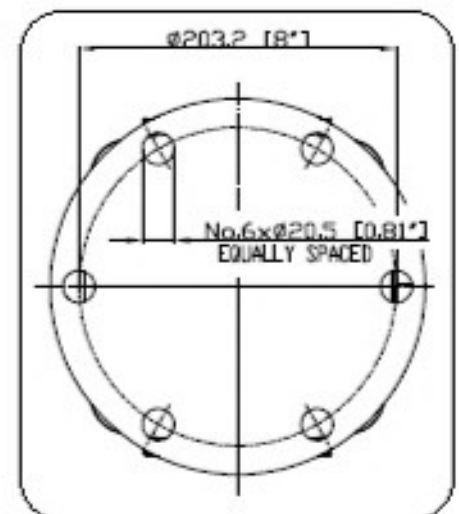
Gearbox Components



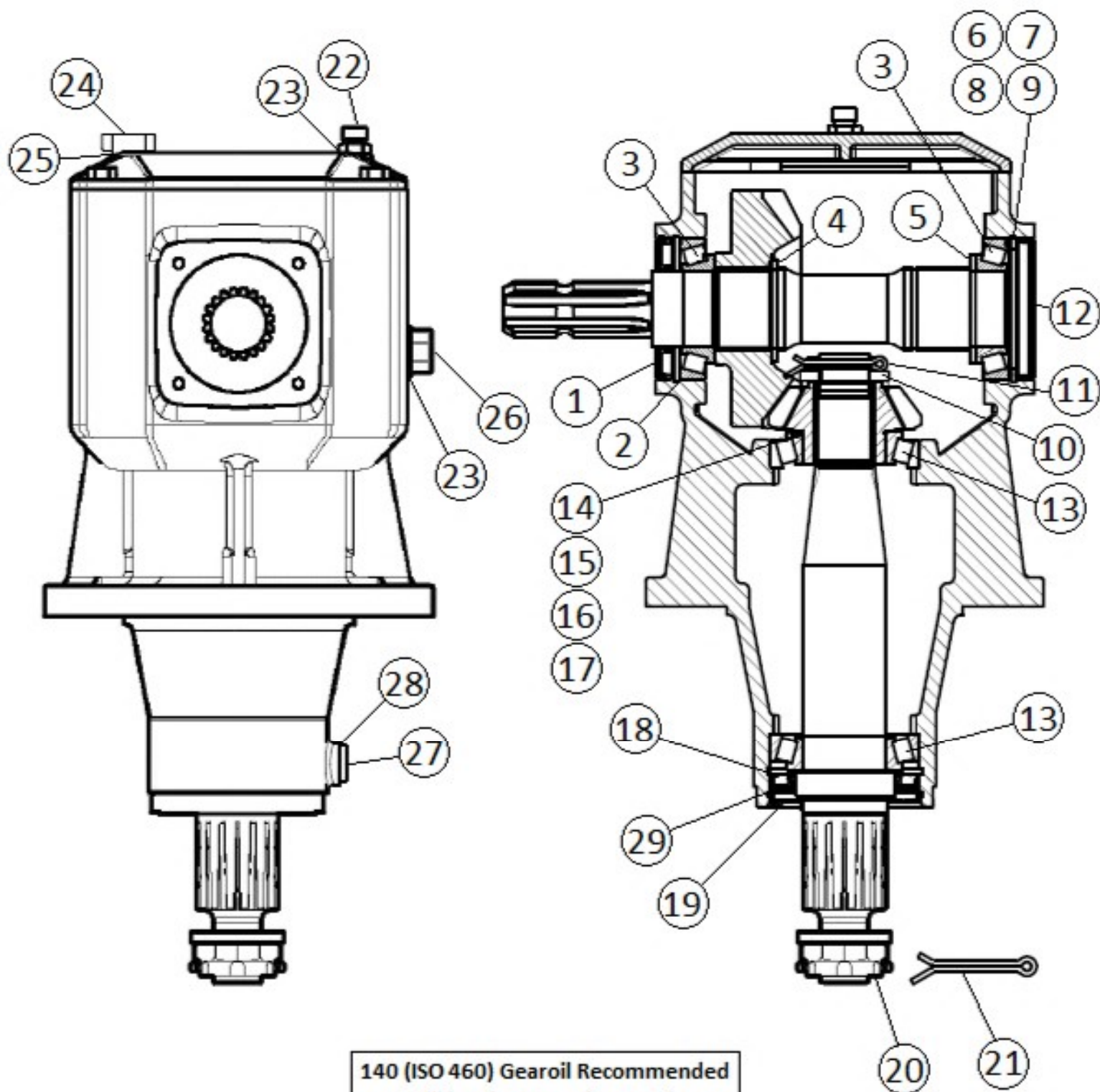
140 (ISO 460) Gearoil Recommended
86 oz. (2.58 qt)

Item	Part #	Description	Qty
1	551100	Input Seal 45 x 85 10	1
2	551062	Snap Ring 85 x 88.5 x 3	2
3	551101	Bearing 30209	2
4	551102	Oil Cap 85 x 10	1
5	551103	Bearing 30210	2
6	551104	Output Seal 50 x 90 x 10	1
7	551105	Protective Washer	1
8	551106	Flatwasher 31 x 56 x 6	1
9	551107	Castle Nut M30 x 2	1
10	551108	Cotter Pin M6 x 60	1
11	551093	Check Plug 3/8"	1
12	551109	Breather Plug 1/2"	1
13	551110	Shim Kit 70.3 x 84.7	2
14	551111	Shim 45.3 x 65.3 x 2.5	1
15	551112	Shim Kit 50.3 x 70.3	1

COMPLETE GEARBOX 540 - RPM - 191512



191312 Gearbox 540/1000-RPM (RG100-A)

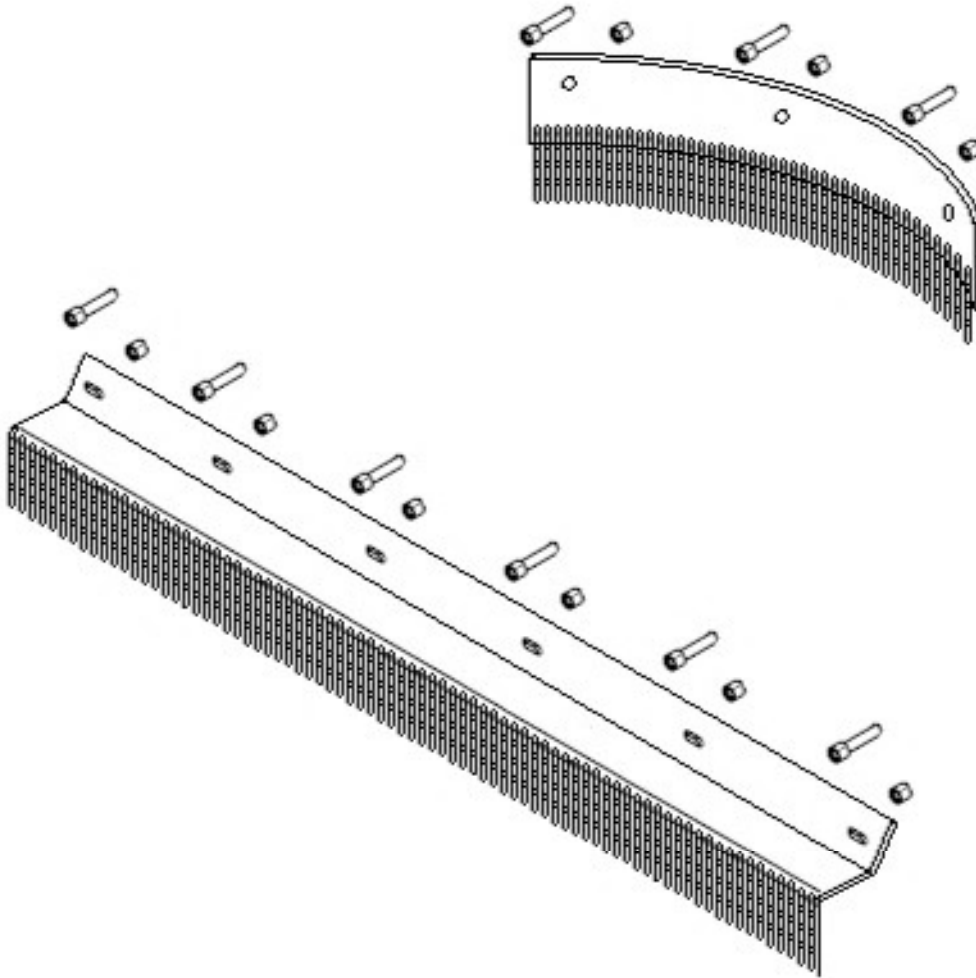


140 (ISO 460) Gearoil Recommended
Fill level 116-oz. (3.48-Qt)

191312 Gearbox 540/1000-RPM (RG100-A)

Item	Part #	Description	Qty
1	191350	DOUBLE LIP SEAL 45 X 85 X 10	1
2	191351	SNAP RING 85 X 3	2
3	191352	TAPERED ROLLER BEARING 30209	2
4	191353	SNAP RING 50 X 3	1
5	191354	FLAT WASHER 45.3 X 65 X 2.5	1
6	191355	ADJUSTING SHIM 84.5 X 73 X 0.3	4
7	191356	ADJUSTING SHIM 84.5 X 73 X 0.4	4
8	191357	ADJUSTING SHIM 84.5 X 73 X 0.5	2
9	191358	ADJUSTING SHIM 84.5 X 73 X 1	2
10	191359	CASTLE NUT M30 X 1.5	1
11	191360	COTTER PIN 5 X 63	1
12	191361	OIL CAP PLUG 85 X 10	1
13	191362	TAPERED ROLLER BEARING 30210	2
14	191363	ADJUSTING WASHER 50.2 X 61.8 X 0.3	4
15	191364	ADJUSTING WASHER 50.2 X 61.8 X 0.4	4
16	191365	ADJUSTING WASHER 50.2 X 61.8 X 0.5	1
17	191366	ADJUSTING WASHER 50.2 X 61.8 X 1	1
18	191367	SNAP RING 90 X 3	2
19	191368	DUST CAP	1
20	191369	CASTLE NUT M30 X 2	1
21	191370	COTTER PIN 6.3 X 63	1
22	191371	VENT PLUG M16 X 1.5	1
23	191372	PLUG WASHER 16.2 X 19.9 X 1.5	2
24	191373	OIL LEVELER	1
25	191374	OIL LEVELER WASHER	1
26	191375	OIL PLUG M16 X 1.5	1
27	191376	SOLID PLUG – CS HEX 9/16"	1
28	191377	O-RING 11.2 X 2	1
29	191379	DOUBLE LIP SEAL 60 X 90 X 10	1

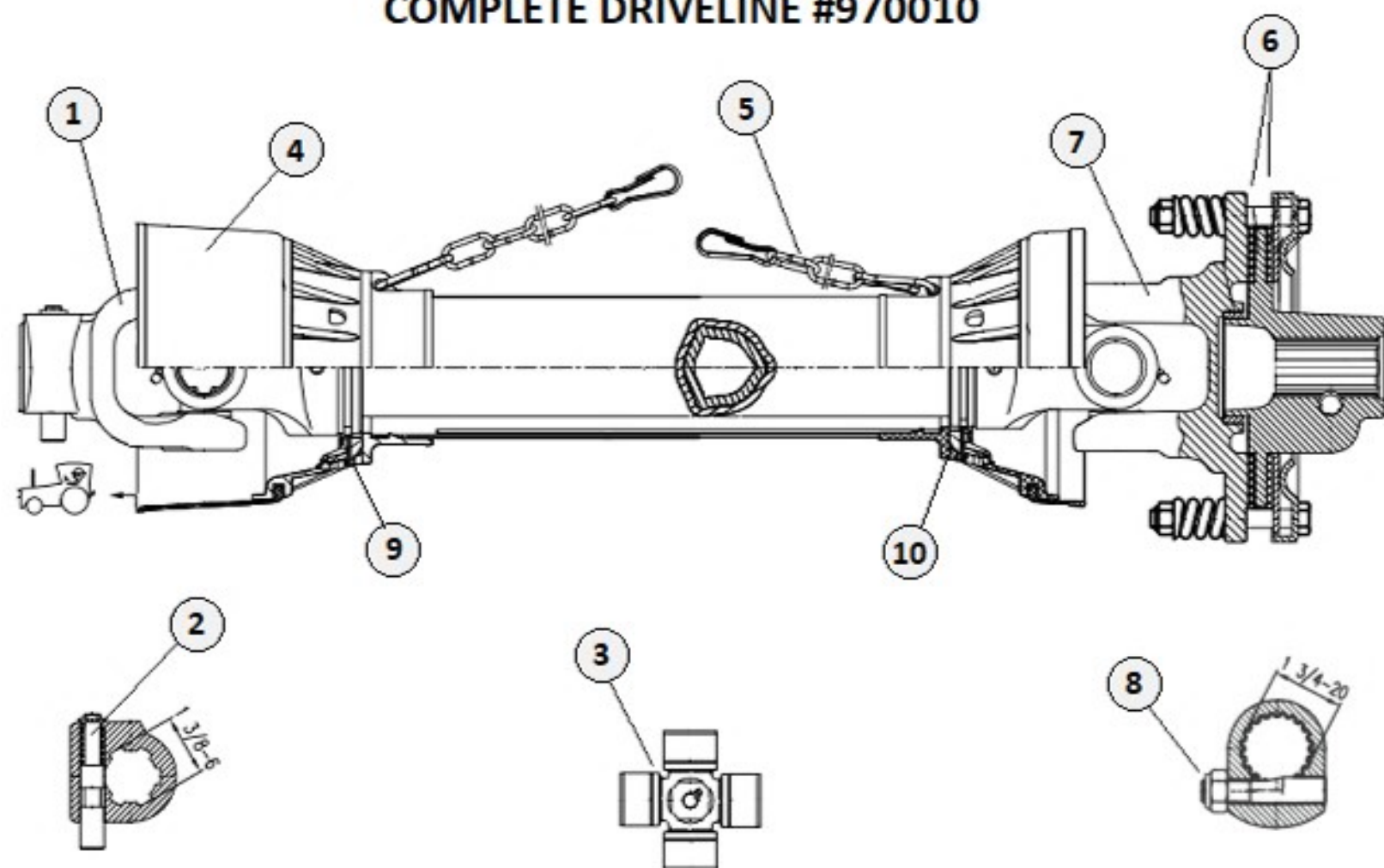
Chain Guards



Item	Part #	Description	Qty
	CG-970	COMPLETE CHAIN KIT – FRONT & REAR	1
	351519	CARRIAGE BOLT 1/2" X 1-1/2" (Sold as a 5-Pack)	

SLIPCLUTCH DRIVELINE COMPONENTS
COMPLETE DRIVELINE #970010

(SERIES 6)



**Call for part availability
423-405-5150**