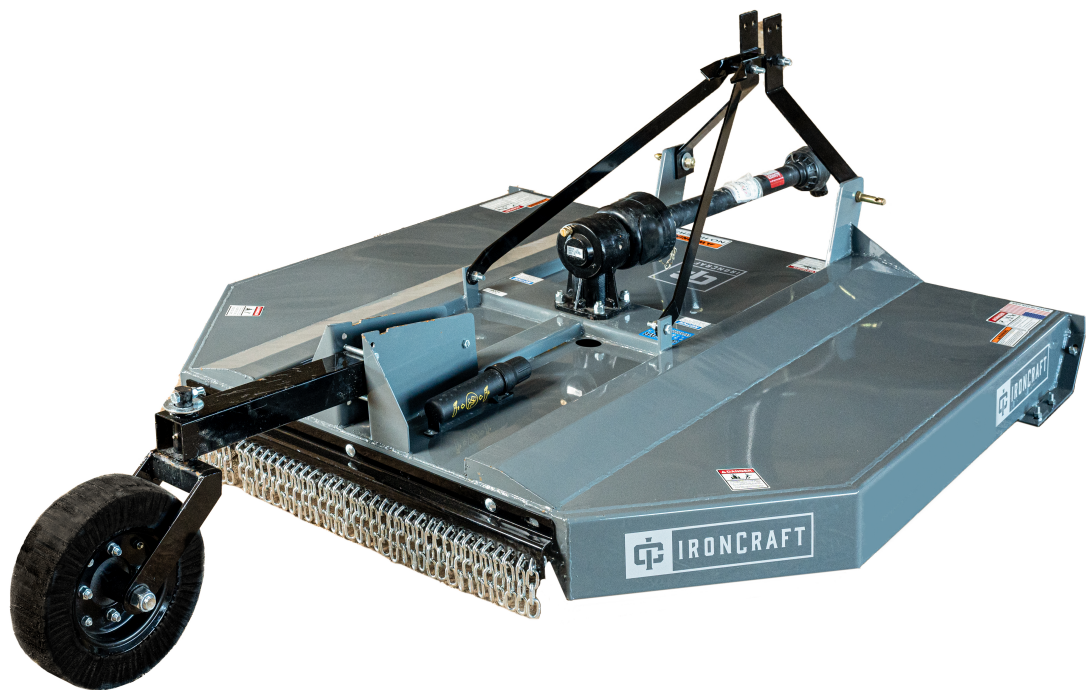


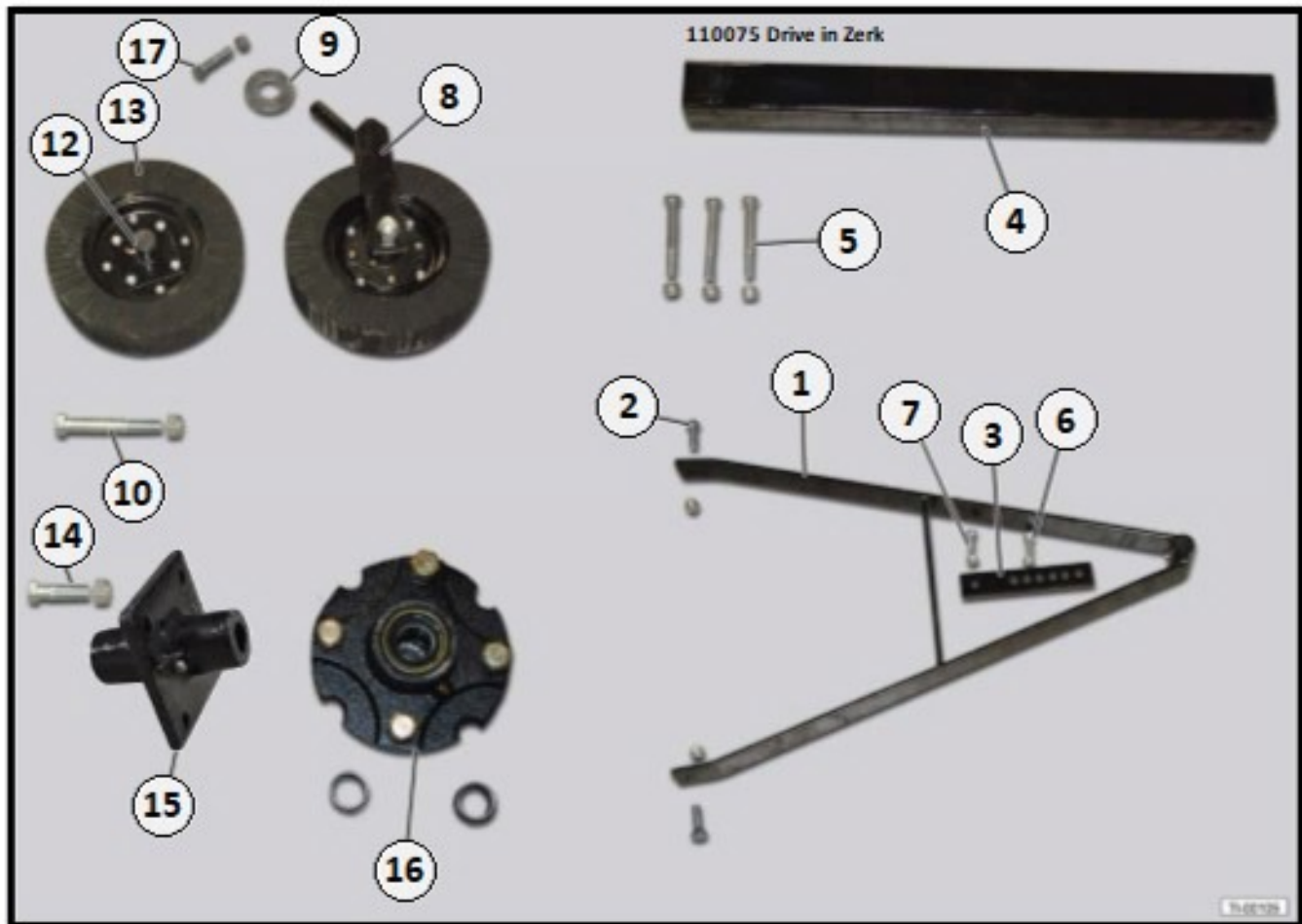
# IRONCRAFT

Contact your Authorized Ironcraft Dealer for  
all your parts needs



# 1200/1300/1400/1500/1600 ROTARY CUTTER PARTS MANUAL

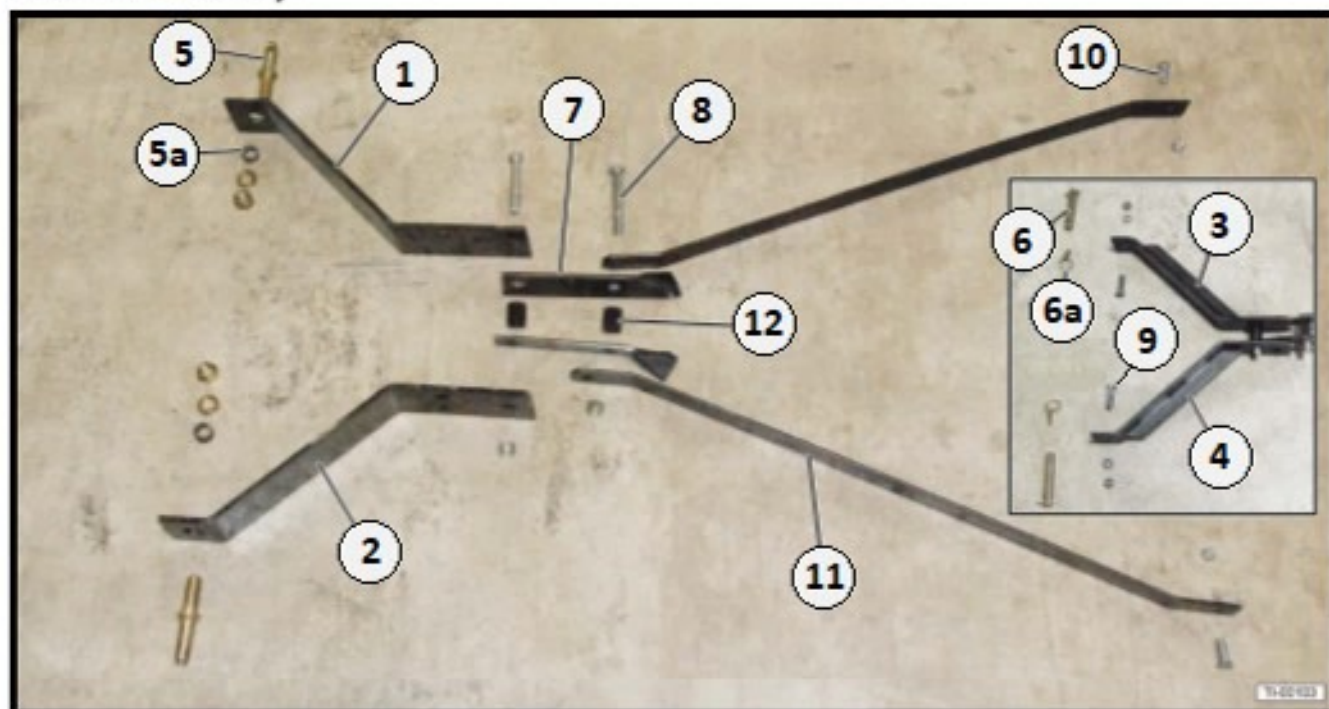
### 13.1 Tailwheel Assembly



Item	Part #	Description	Qty
1	110014	Tailwheel Frame (1405, 1406, 1505, 1506)	1
2	110015	Bolt & Locknut Kit 5/8" x 2" (1405, 1406, 1505, 1506)	2
3	110016	Tailwheel Adj. Plate (1405, 1406, 1505, 1506)	1
4	150050	Tailwheel Tube (1507, 1600) Length-36"	1
	120002	Tailwheel Tube (1200, 1300) Length-34"	1
5	120003	Bolt & Locknut Kit 1/2" x 4-1/2" (1200, 1300, 1507)	3
6	110017	Tailwheel Adj. Top Bolt Kit 1/2" x 1-1/2" (1400, 1505, 1506)	1
7	110069	Tailwheel Adj. Bottom Bolt Kit 1/2" x 2" (1400, 1505, 1506)	1
8	110018	Tailwheel Fork	1
9	110019	Flatwasher 1-1/4"	1
10	110020	Axle bolt & Nut Kit 1"-8 x 8"	1
**	11	150052 Tailwheel Kit – Heavy Duty (1507, 1606, 1607) NOT SHOWN	1
		110072 Tailwheel Kit – Standard Duty (1200, 1300, 1400, 1505, 1506)	1
12	110021	Zerk Fitting	1
13	110022	Laminated Wheel	1
14	110017	Bolt, Lockwasher & Locknut Kit 1/2" X 1-1/2"	1
15	110024	Wheel Hub – Standard (1200, 1300, 1400, 1505, 1506)	1
16	150031	Wheel Hub – Heavy Duty (1507, 1606, 1607)	1
17	110070	Bolt & Locknut Kit 1/2" x 2-1/2"	1

\*\* Not Shown

## 13.2 Hitch Assembly



### 1200 - 1300 Hitch Components

Item	Part #	Description	Qty
1	120004	A-Frame, Left or Right Side (Same)	1
2	120004	A-Frame, Left or Right Side (Same)	1
3	---	Intentionally Left Blank	---
4	---	Intentionally Left Blank	---
5	110032	Lift Pin Kit, CAT-I	2
5a	120005	Lift Pin Bushing, 1/2" x 1-1/4" O.D. x 7/8" I.D.	2
6	---	Intentionally Left Blank	---
6a	---	Intentionally Left Blank	---
7	120006	Knuckle, Wing Style Left Side	1
	120032	Knuckle, Wing Style Right Side	1
8	110027	Bolt & Locknut Kit 3/4" x 4-1/2" (for A-Frame Knuckle)	1
	110029	Bolt & Locknut Kit 5/8" x 4-1/2" (for A-Frame Knuckle)	1
9	---	Intentionally Left Blank	---
10	110015	Bolt & Locknut Kit 5/8" x 2" (for Rear Back Brace)	2
11	120008	Back Brace 1/4" x 2" x 44-1/2"	2
12	110030	A-Frame Spacer 2"	2

### 1500 Hitch Components

Item	Part #	Description	Qty
1	140003	Replaced by 140020 (Sold as a pair 1-LH & 1-RH)	1
2	140002	Replaced by 140020 (Sold as a pair 1-LH & 1-RH)	
3	150030	A-Frame, Right Side, Heavy Duty	1
4	150032	A-Frame, Left Side, Heavy Duty	1
5	110032	Lift Pin Kit, CAT-I (for 1505-1506) 1-1/8" X 9"	2
5a	120005	Lift Pin Bushing, 1/2" x 1-1/4" O.D. x 7/8" I.D.	2
6	150081	Lift Pin, CAT-II (for 1507) -	2
6a	150550	Lynch Pin 7/16" (for 1507)	2
7	120006	Knuckle, Wing Style Left Side	1
	120032	Knuckle, Wing Style Right Side	1
8	150044	Bolt & Locknut Kit 3/4" x 5-1/2" (for 1505-1506)	1
	150045	Bolt & Locknut Kit 5/8" x 5-1/2" (for 1505-1506)	1
9	---	Intentionally Left Blank	---
10	110015	Bolt & Locknut Kit 5/8" x 2" (for Rear Back Brace)	2
11	110031	Back Brace 3/8" x 2" x 35-1/2" (for 1505-1506)	2
	150036	Back Brace 3/8" x 2" x 50" (for 1507)	2
12	110030	A-Frame Spacer 2" (for 1505-1506)	2
	150051	A-Frame Spacer 2-1/4" (for 1507)	2

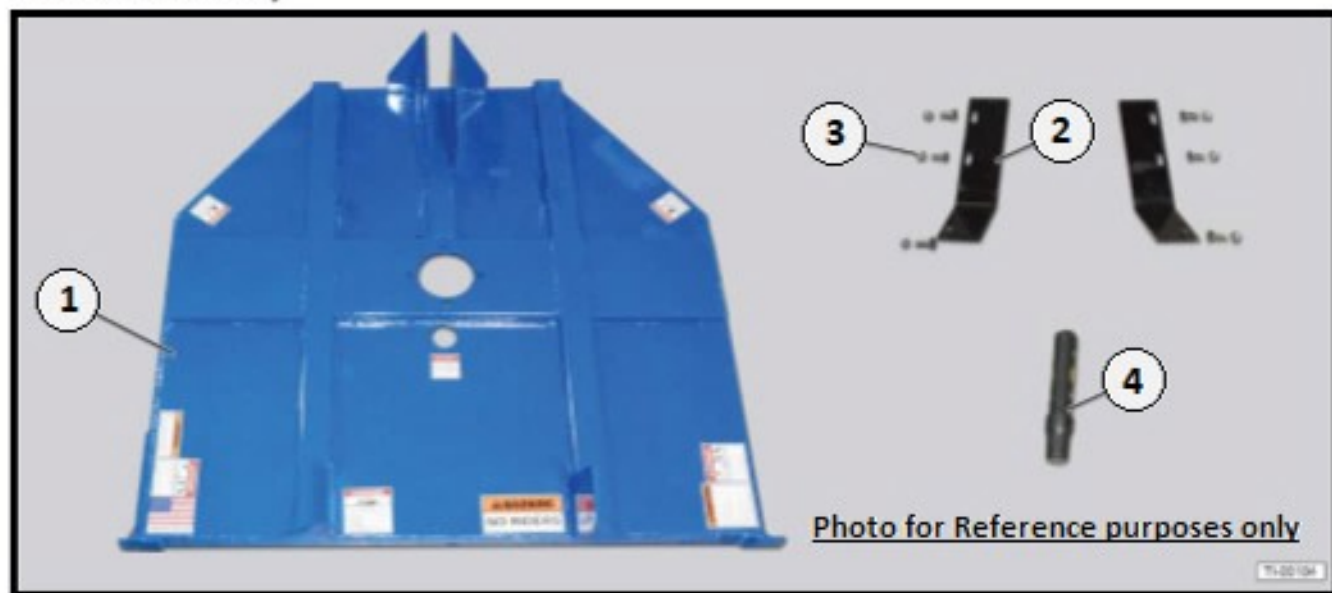
### 1400 Hitch Components

Item	Part #	Description	Qty
1	140003	Replaced by 140020 (Sold as a pair 1-LH & 1-RH)	1
2	140002	Replaced by 140020 (Sold as a pair 1-LH & 1-RH)	
3	---	Intentionally Left Blank	---
4	---	Intentionally Left Blank	---
5	110032	Lift Pin Kit, CAT-I	2
5a	120005	Lift Pin Bushing, 1/2" x 1-1/4" O.D. x 7/8" I.D.	2
6	---	Intentionally Left Blank	---
6a	---	Intentionally Left Blank	---
7	120006	Knuckle, Wing Style Left Side	1
	120032	Knuckle, Wing Style Right Side	1
8	140018	Bolt & Locknut Kit 3/4" x 5" (for A-Frame Knuckle)	1
	140004	Bolt & Locknut Kit 5/8" x 5" (for A-Frame Knuckle)	1
9	---	Intentionally Left Blank	---
10	110015	Bolt & Locknut Kit 5/8" x 2" (for Rear Back Brace)	2
11	110031	Back Brace 3/8" x 2" x 35-1/2"	2
12	110030	A-Frame Spacer 2"	2

### 1600 Hitch Components

Item	Part #	Description	Qty
1	---	Intentionally Left Blank	---
2	---	Intentionally Left Blank	---
3	160009	A-Frame, Left or Right Side, H.D. (for 1606-1607)	2
4	---	Intentionally Left Blank	---
5	---	Intentionally Left Blank	---
5a	---	Intentionally Left Blank	---
6	150033	Lift Pin, CAT-II (for 1606-1607) 1-1/8" X 7"	2
6a	150550	Lynch Pin 7/16" (for 1606-1607)	2
7	120006	Knuckle, Wing Style Left Side	1
	120032	Knuckle, Wing Style Right Side	1
8	150047	Bolt & Locknut Kit 3/4" x 5-1/2" (for 1606-1607)	1
	150048	Bolt & Locknut Kit 5/8" x 5-1/2" (for 1606-1607)	1
9	150034	Bottom Bolt & Locknut Kit 3/4" x 2-1/2" (1606-1607)	2
10	110015	Bolt & Locknut Kit 5/8" x 2" (for Rear Back Brace)	2
11	160023	Back Brace 3/8" x 2" x 50" (for 1606-1607)	2
12	110030	A-Frame Spacer 2" (for 1606-1607)	2

### 13.3 Deck Assembly



#### 1204 Deck Assembly

Item	Part #	Description	Qty
1	120014	4-ft Deck Only with Decals – RED	1
	120015	4-ft Deck Only with Decals – Green	1
	120016	4-ft Deck Only with Decals – Orange	1
	120017	4-ft Deck Only with Decals – Yellow	1
	120018	4-ft Deck Only with Decals – Blue	1
	120019	4-ft Deck Only with Decals – Grey	1
2	120010	Skid Shoes (Sold in Pairs Only)	1
3	120011	Carriage Bolt & Nut Kit 1/2" x 1-1/2" (6-Pack)	1
4	110034	Document Holder with Screws	1

#### 1205 Deck Assembly

Item	Part #	Description	Qty
1	120020	5-ft Deck Only with Decals – RED	1
	120021	5-ft Deck Only with Decals – Green	1
	120022	5-ft Deck Only with Decals – Orange	1
	120023	5-ft Deck Only with Decals – Yellow	1
	120024	5-ft Deck Only with Decals – Blue	1
	120025	5-ft Deck Only with Decals – Grey	1
2	120010	Skid Shoes (Sold in Pairs Only)	1
3	120011	Carriage Bolt & Nut Kit 1/2" x 1-1/2" (6-Pack)	1
4	110034	Document Holder with Screws	1

#### 1206 Deck Assembly

Item	Part #	Description	Qty
1	120026	6-ft Deck Only with Decals – RED	1
	120027	6-ft Deck Only with Decals – Green	1
	120028	6-ft Deck Only with Decals – Orange	1
	120029	6-ft Deck Only with Decals – Yellow	1
	120030	6-ft Deck Only with Decals – Blue	1
	120031	6-ft Deck Only with Decals – Grey	1
2	120010	Skid Shoes (Sold in Pairs Only)	1
3	120011	Carriage Bolt & Nut Kit 1/2" x 1-1/2" (6-Pack)	1
4	110034	Document Holder with Screws	1

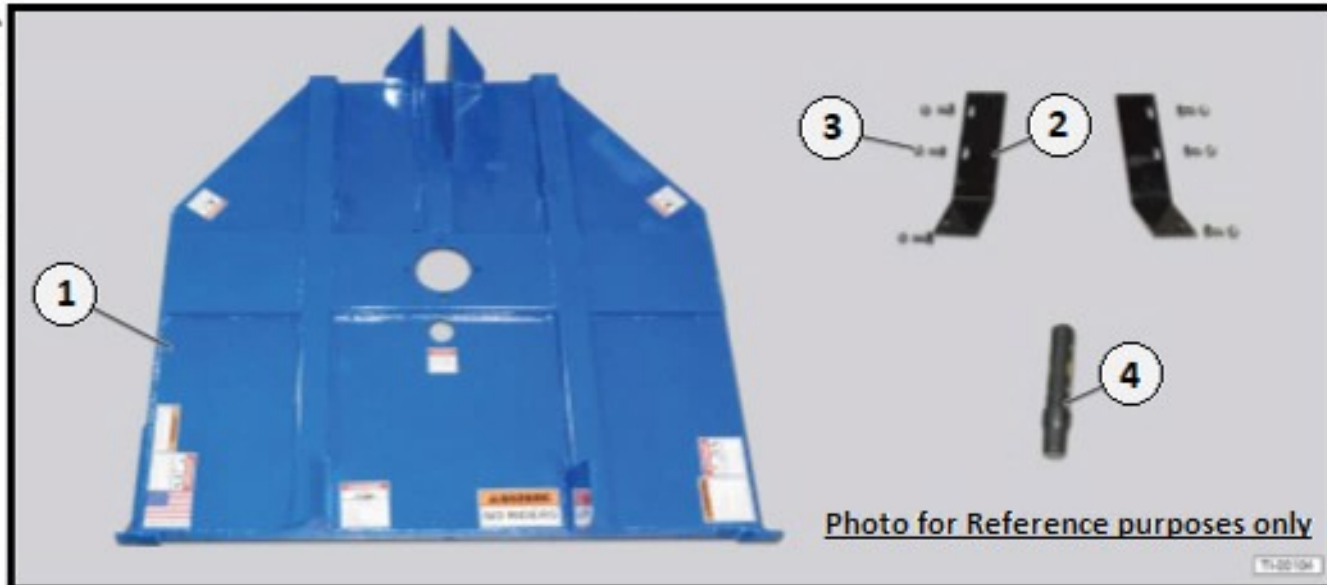
#### 1305 Deck Assembly

Item	Part #	Description	Qty
1	130002	5-ft Deck Only with Decals – RED	1
	130003	5-ft Deck Only with Decals – Green	1
	130004	5-ft Deck Only with Decals – Orange	1
	130005	5-ft Deck Only with Decals – Yellow	1
	130006	5-ft Deck Only with Decals – Blue	1
	130007	5-ft Deck Only with Decals – Grey	1
2	120010	Skid Shoes (Sold in Pairs Only)	1
3	120011	Carriage Bolt & Nut Kit 1/2" x 1-1/2" (6-Pack)	1
4	110034	Document Holder with Screws	1

#### 1306 Deck Assembly

Item	Part #	Description	Qty
1	130008	6-ft Deck Only with Decals – RED	1
	130009	6-ft Deck Only with Decals – Green	1
	130010	6-ft Deck Only with Decals – Orange	1
	130011	6-ft Deck Only with Decals – Yellow	1
	130012	6-ft Deck Only with Decals – Blue	1
	130013	6-ft Deck Only with Decals – Grey	1
2	120010	Skid Shoes (Sold in Pairs Only)	1
3	120011	Carriage Bolt & Nut Kit 1/2" x 1-1/2" (6-Pack)	1
4	110034	Document Holder with Screws	1

13.3 Deck Assembly



1405 Deck Assembly

Item	Part #	Description	Qty
1	140006	5-ft Deck Only with Decals – RED	1
	140007	5-ft Deck Only with Decals – Green	1
	140008	5-ft Deck Only with Decals – Orange	1
	140009	5-ft Deck Only with Decals – Yellow	1
	140010	5-ft Deck Only with Decals – Blue	1
	140011	5-ft Deck Only with Decals – Grey	1
2	120010	Skid Shoes (Sold in Pairs Only)	1
3	120011	Carriage Bolt & Nut Kit 1/2" x 1-1/2" (6-Pack)	1
4	110034	Document Holder with Screws	1

1507 Dual Tailwheel Deck Assembly

Item	Part #	Description	Qty
1	150038	7-ft Deck Only with Decals – RED	1
	150039	7-ft Deck Only with Decals – Green	1
	150040	7-ft Deck Only with Decals – Orange	1
	150041	7-ft Deck Only with Decals – Yellow	1
	150042	7-ft Deck Only with Decals – Blue	1
	150043	7-ft Deck Only with Decals – Grey	1
	2	120010	Skid Shoes (Sold in Pairs Only)
3	120011	Carriage Bolt & Nut Kit 1/2" x 1-1/2" (6-Pack)	1
4	110034	Document Holder with Screws	1

1406 Deck Assembly

Item	Part #	Description	Qty
1	140012	6-ft Deck Only with Decals – RED	1
	140013	6-ft Deck Only with Decals – Green	1
	140014	6-ft Deck Only with Decals – Orange	1
	140015	6-ft Deck Only with Decals – Yellow	1
	140016	6-ft Deck Only with Decals – Blue	1
	140017	6-ft Deck Only with Decals – Grey	1
2	120010	Skid Shoes (Sold in Pairs Only)	1
3	120011	Carriage Bolt & Nut Kit 1/2" x 1-1/2" (6-Pack)	1
4	110034	Document Holder with Screws	1

1606 Heavy Duty Deck Assembly

Item	Part #	Description	Qty
1	160011	6-ft Deck Only with Decals – RED	1
	160012	6-ft Deck Only with Decals – Green	1
	160013	6-ft Deck Only with Decals – Orange	1
	160014	6-ft Deck Only with Decals – Yellow	1
	160015	6-ft Deck Only with Decals – Blue	1
	160016	6-ft Deck Only with Decals – Grey	1
2	120010	Skid Shoes (Sold in Pairs Only)	1
3	120011	Carriage Bolt & Nut Kit 1/2" x 1-1/2" (6-Pack)	1
4	110034	Document Holder with Screws	1

1505 Deck Assembly

Item	Part #	Description	Qty
1	150014	5-ft Deck Only with Decals – RED	1
	150015	5-ft Deck Only with Decals – Green	1
	150016	5-ft Deck Only with Decals – Orange	1
	150017	5-ft Deck Only with Decals – Yellow	1
	150018	5-ft Deck Only with Decals – Blue	1
	150019	5-ft Deck Only with Decals – Grey	1
	2	120010	Skid Shoes (Sold in Pairs Only)
3	120011	Carriage Bolt & Nut Kit 1/2" x 1-1/2" (6-Pack)	1
4	110034	Document Holder with Screws	1

1607 Heavy Duty Deck Assembly

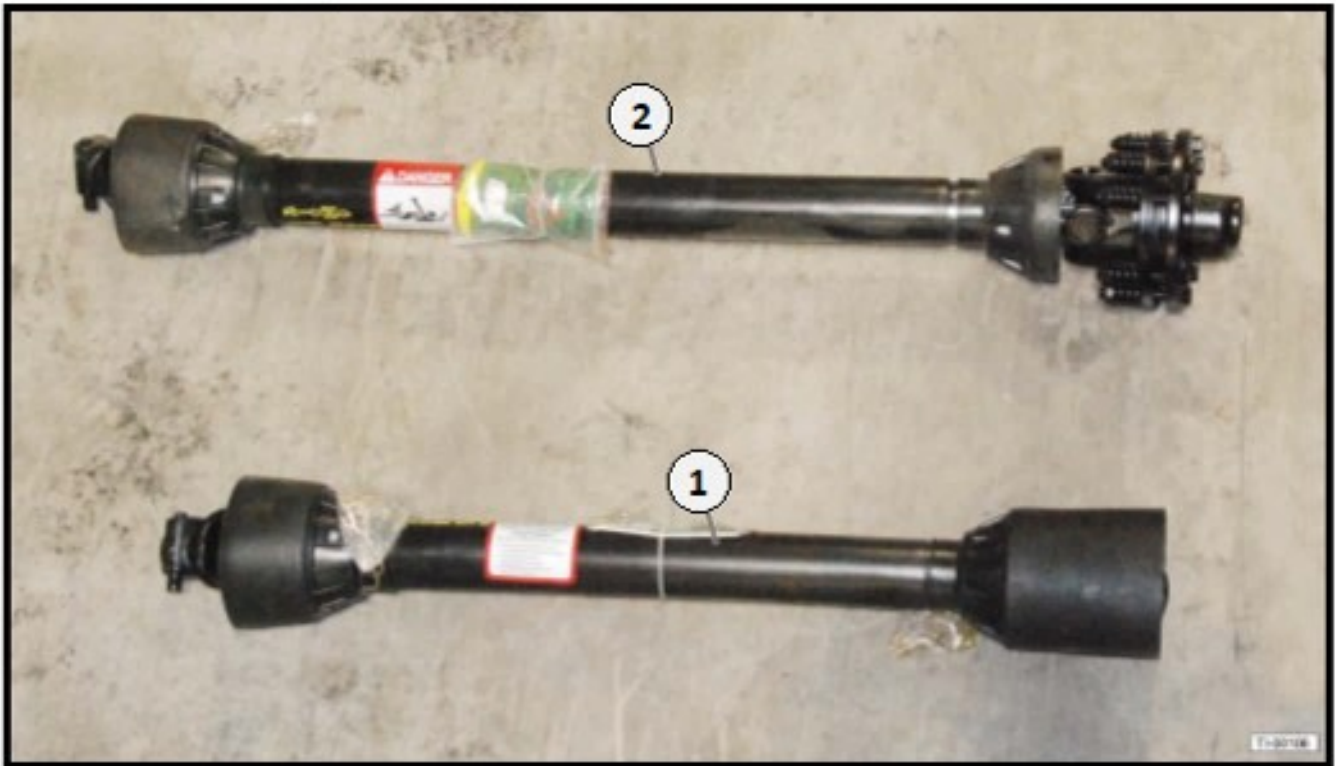
Item	Part #	Description	Qty
1	160017	7-ft Deck Only with Decals – RED	1
	160018	7-ft Deck Only with Decals – Green	1
	160019	7-ft Deck Only with Decals – Orange	1
	160020	7-ft Deck Only with Decals – Yellow	1
	160021	7-ft Deck Only with Decals – Blue	1
	160022	7-ft Deck Only with Decals – Grey	1
	2	120010	Skid Shoes (Sold in Pairs Only)
3	120011	Carriage Bolt & Nut Kit 1/2" x 1-1/2" (6-Pack)	1
4	110034	Document Holder with Screws	1

1506 Deck Assembly

Item	Part #	Description	Qty
1	150020	6-ft Deck Only with Decals – RED	1
	150021	6-ft Deck Only with Decals – Green	1
	150022	6-ft Deck Only with Decals – Orange	1
	150023	6-ft Deck Only with Decals – Yellow	1
	150024	6-ft Deck Only with Decals – Blue	1
	150025	6-ft Deck Only with Decals – Grey	1
2	120010	Skid Shoes (Sold in Pairs Only)	1
3	120011	Carriage Bolt & Nut Kit 1/2" x 1-1/2" (6-Pack)	1
4	110034	Document Holder with Screws	1

Photo for Reference purposes only

### 13.4 Driveline Assembly

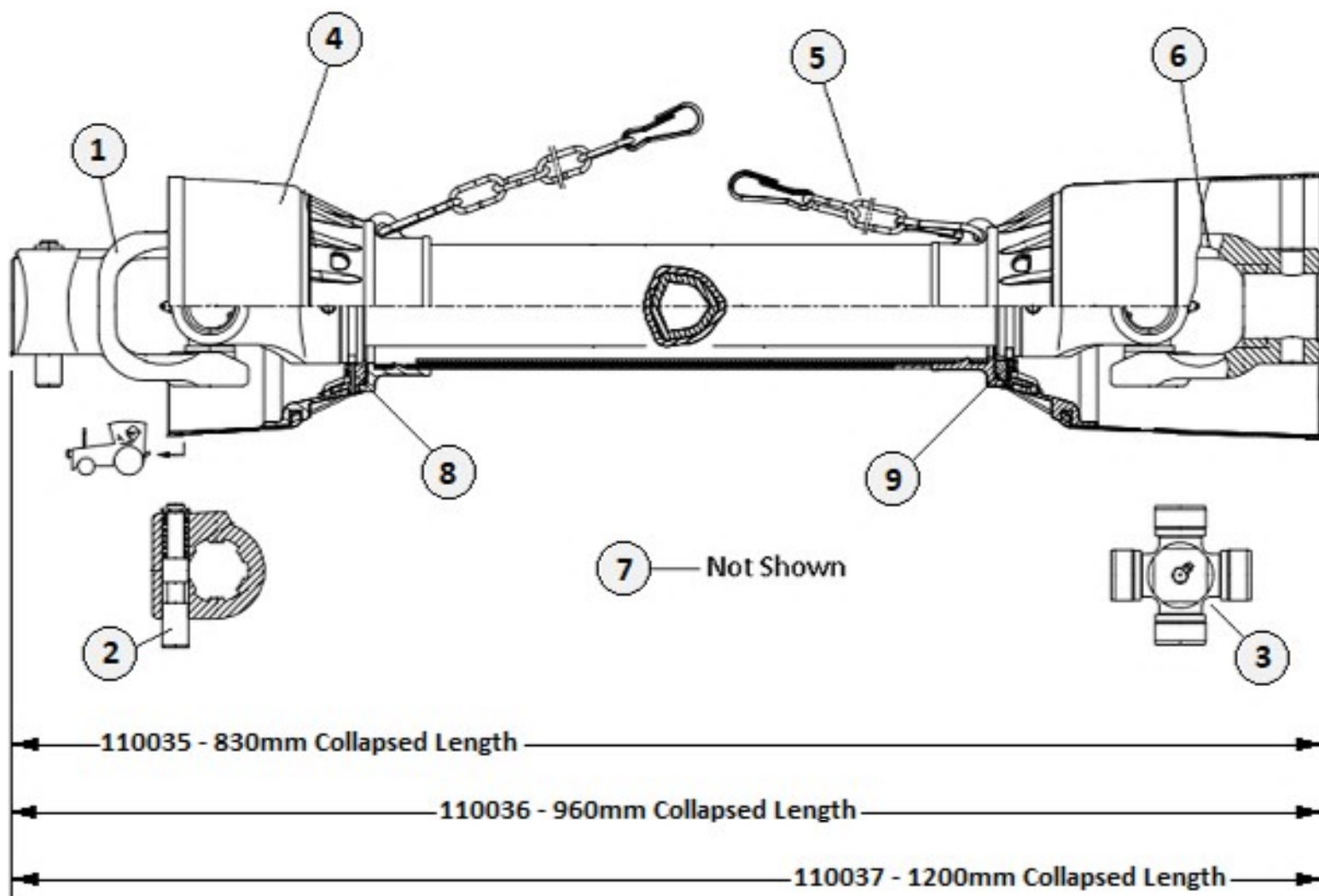


Item	Part #	Description	Qty
1	110035	Driveline, Series 4 (830mm) Shear Pin for 4-ft (1204)	1
	110036	Driveline, Series 4 (960mm) Shear Pin for 5-ft (1205-1305-1405)	1
	110037	Driveline, Series 4 (1200mm) Shear Pin for 6-ft (1206-1306-1406)	1
2	*120012	Driveline, Series 4 (960mm) Slipclutch for 4-5-6-ft (1200-1300-1400-1505-1506)	1
	150037	Driveline, Series 6 (84H) Slipclutch for 7-ft H.D. (1507-1607)	1
	160010	Driveline, Series 6 (725) Slipclutch for 6-ft H.D. (1606)	1

\*Must be cut to Length for use on 4-ft Cutters

# SHEAR PIN - DRIVELINE COMPONENTS

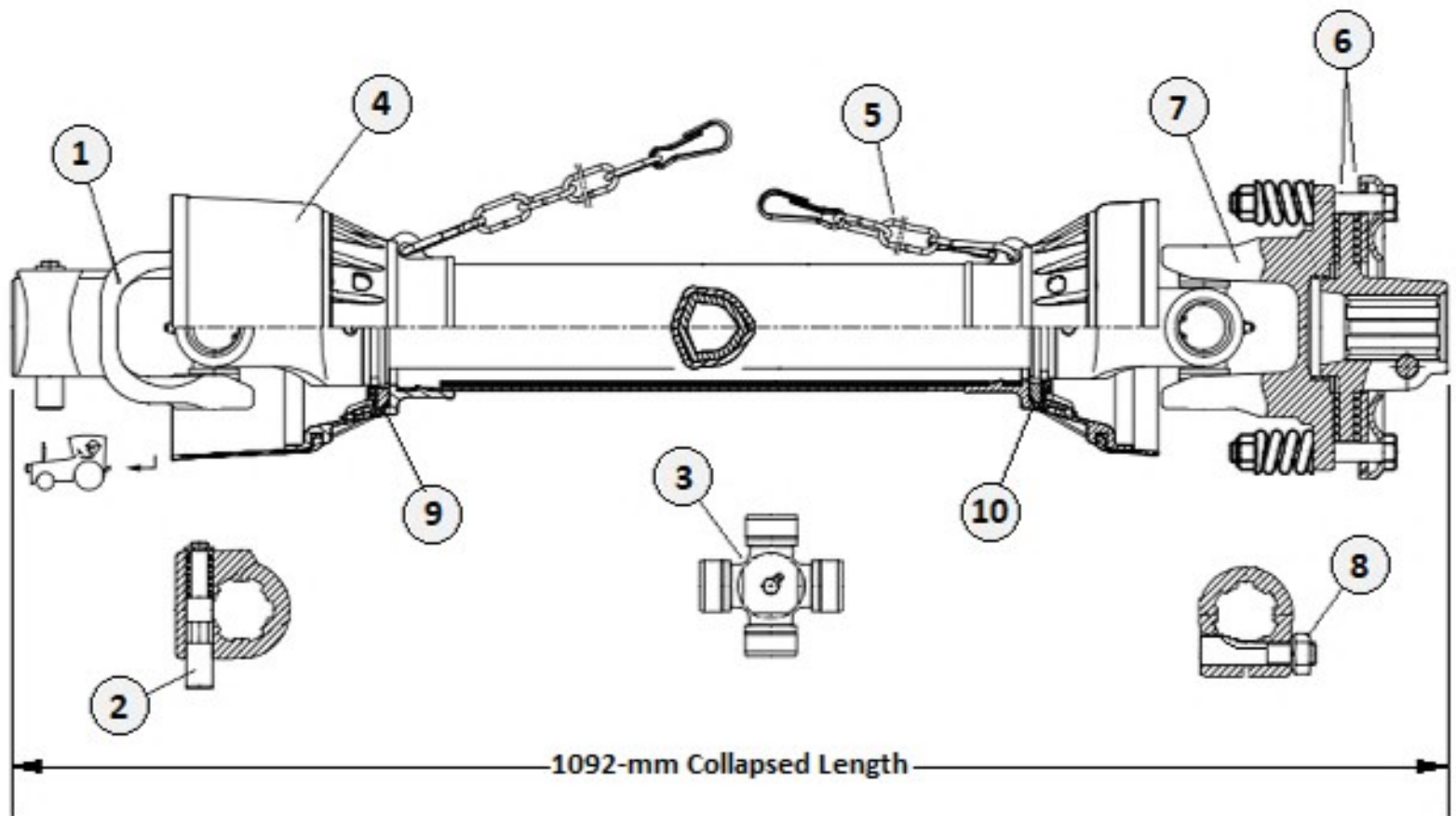
## FOR MODELS - 1204 -1205- 1206 - 1305 - 1306 - 1405 - 1406



Item	Part #	Description	Qty
1	552000	Tractor Yoke with Push Pin 1-3/8" 6-S	1
2	552001	Push Pin Kit	1
3	552003	Cross Kit 27 x 74.6	2
4	552004	Complete Safety Shield	1
5	552005	Safety Chain	2
6	552006	Yoke 1-3/8"-Smooth	1
7	110007	Shearbolt Kit 1/2"x 3-1/2" Gr.2 (5-Pack)	1
8	552008	Outer Plastic Shield Bearing	1
9	552009	Inner Plastic Shield Bearing	1
	<b>110035</b>	<b>Complete Shearpin Driveline for 4-ft</b>	
	<b>110036</b>	<b>Complete Shearpin Driveline for 5-ft</b>	
	<b>110037</b>	<b>Complete Shearpin Driveline for 6-ft</b>	

## SLIPCLUTCH DRIVELINE COMPONENTS

for Models: 1204 - 1205 - 1206 - 1305 - 1306 - 1405 - 1406 - 1505 - 1506

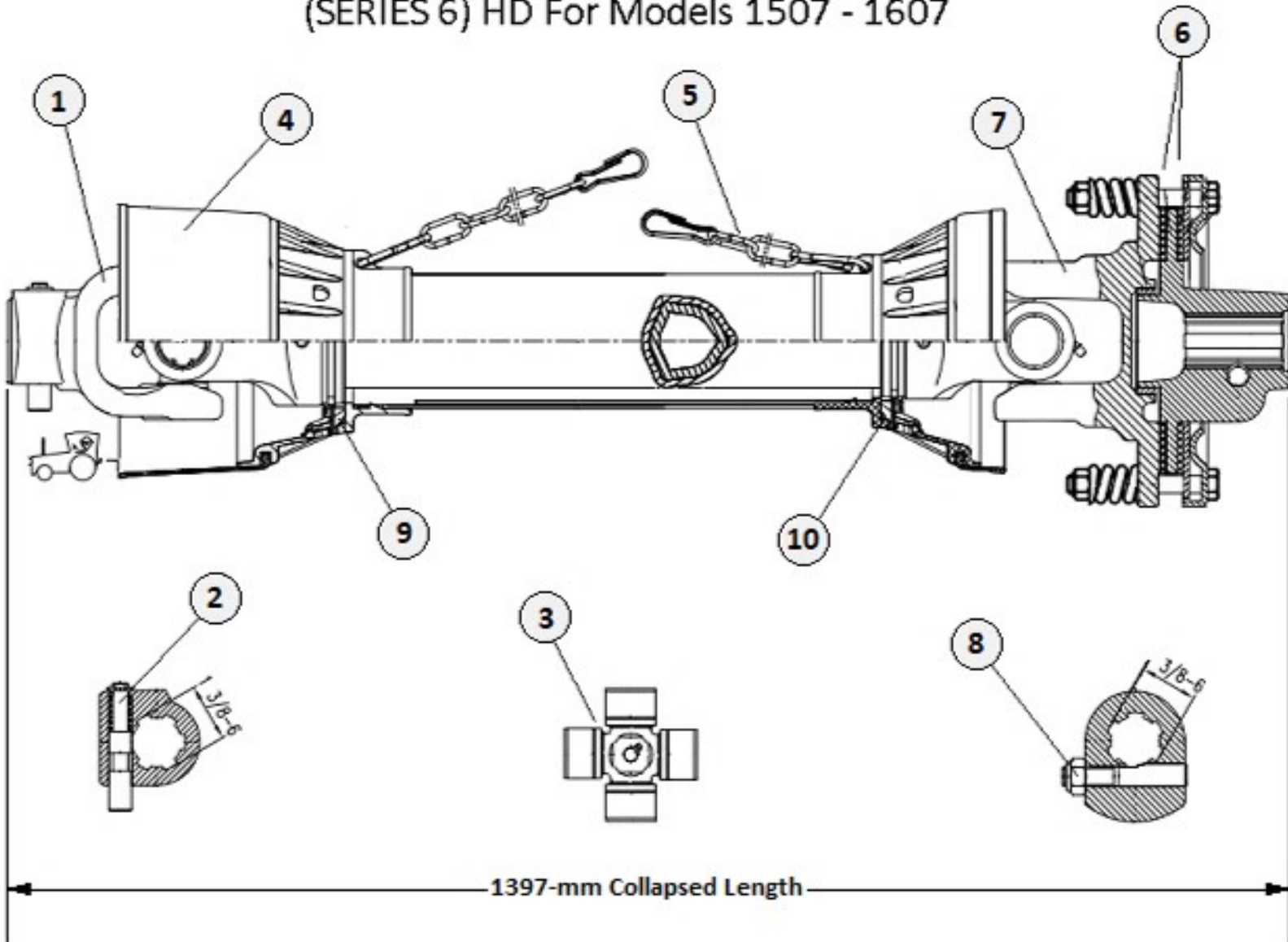


Item	Part #	Description	Qty
1	552000	Tractor Yoke with Push Pin 1-3/8" 6-S	1
2	552001	Push Pin Kit	1
3	552003	Cross Kit 27 x 74.6	2
4	552030	*Complete Safety Shield	1
5	552005	Safety Chain	2
6	552031	Clutch Lining (2-Pack)	1
7	552032	Complete Slipclutch	1
8	552033	Eccentric Pin with Nut	1
9	552034	Outer Plastic Shield Bearing	1
10	552035	Inner Plastic Shield Bearing	1
	120012	*Complete Slipclutch Driveline	

\*May need to cut driveline shorter to fit 4-ft & 5-ft Applications

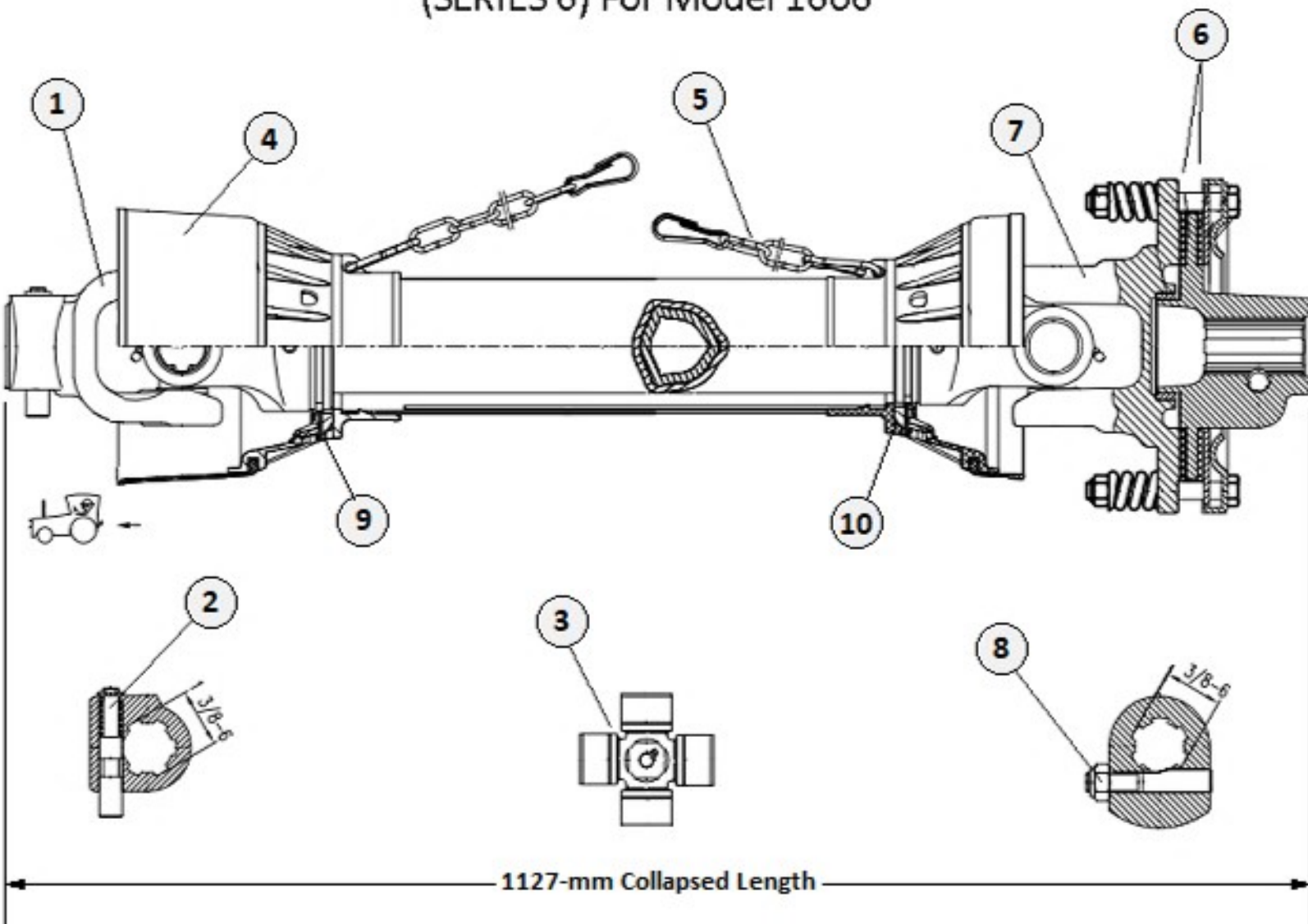


SLIPCLUTCH DRIVELINE COMPONENTS  
(SERIES 6) HD For Models 1507 - 1607



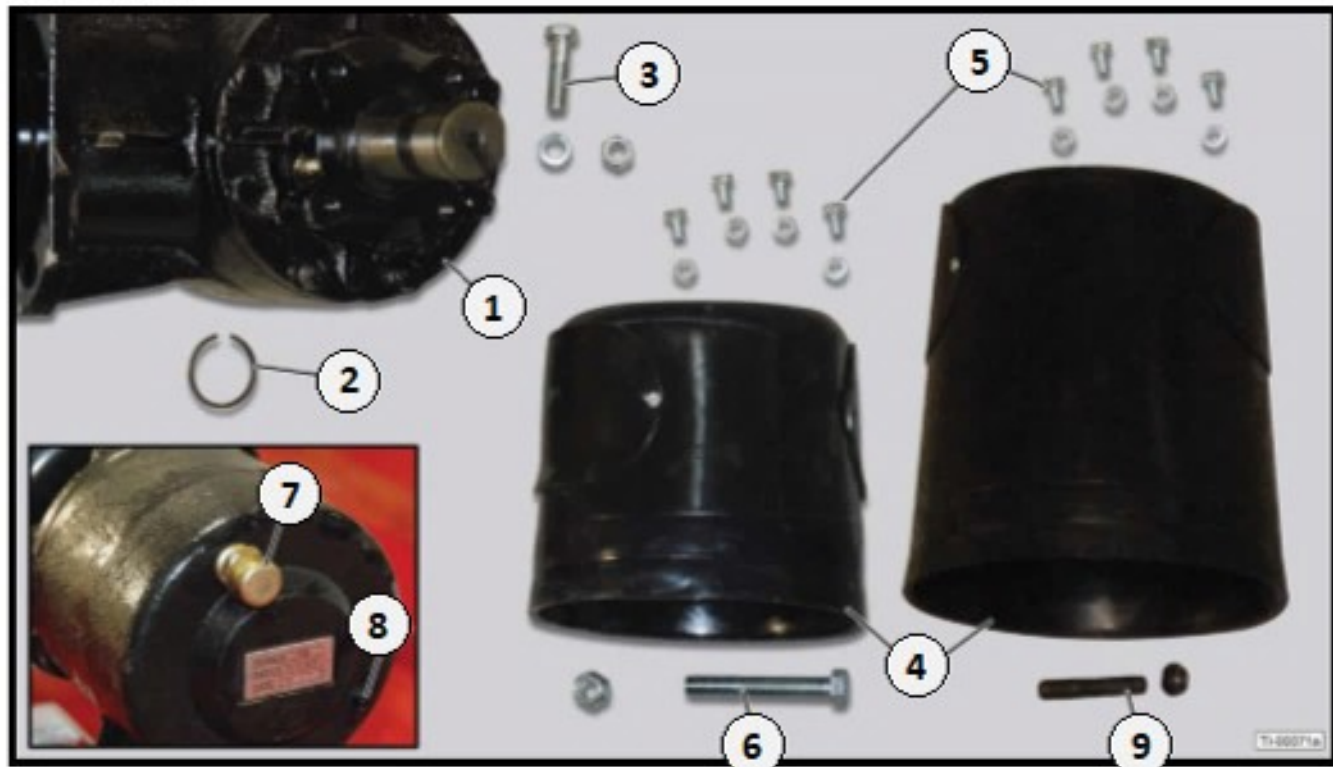
Item	Part #	Description	Qty
1	552020	Tractor Yoke with Push Pin 1-3/8" 6-S	1
2	552021	Push Pin Kit	1
3	552023	Cross Kit 30.25 x 92	2
4	552024	Complete Safety Shield	1
5	552005	Safety Chain	2
6	552025	Clutch Lining (2-Pack)	1
7	552026	Complete Slipclutch	1
8	552027	Eccentric Pin with Nut	1
9	552028	Outer Plastic Shield Bearing	1
10	552029	Inner Plastic Shield Bearing	1
150037	Complete Slipclutch Driveline W/6-Spline Tractor Yoke		
150037-20	Complete Slipclutch Driveline W/20-Spline Tractor Yoke		
150037-21	Complete Slipclutch Driveline W/21-Spline Tractor Yoke		

## SLIPCLUTCH DRIVELINE COMPONENTS (SERIES 6) For Model 1606



Item	Part #	Description	Qty
1	552040	Tractor Yoke with Push Pin 1-3/8" 6-S	1
2	552041	Push Pin Kit	1
3	552048	Cross Kit 30.25 x 80	2
4	552042	Complete Safety Shield	1
5	552005	Safety Chain	2
6	552043	Clutch Lining (2-Pack)	1
7	552044	Complete Slipclutch	1
8	552045	Eccentric Pin with Nut	1
9	552046	Outer Plastic Shield Bearing	1
10	552047	Inner Plastic Shield Bearing	1
	<b>160010</b>	<b>Complete Slipclutch Driveline</b>	

## 13.5 Gearbox



### 1200 Series Gearbox

Item	Part #	Description	Qty
1	110001	Gearbox, Shear Pin 55-HP	1
	120000	Gearbox, Slipclutch 55-HP	1
2	110003	Snap Ring 1-3/8"	1
3	110004	Bolt, Lockwasher & Locknut Kit 5/8" x 2" (for 1200)	1
4	110005	Gearbox Shield, Shear Pin G/B	1
	120001	Gearbox Shield, Slipclutch G/B	1
5	110006	Bolt & Lockwasher Kit 5/16" x 1/2" (4-Pack)	1
6	110007	Shear Pin Bolt & Locknut Kit 1/2" x 3" Grade 2 (5-Pack)	1
7	110008	Gearbox Vent Plug	1
8	110009	Gearbox Drain Plug	1
9	* Ref	Retaining Bolt for Slipclutch	1

### 1300 Series Gearbox

Item	Part #	Description	Qty
1	110002	Gearbox, Shear Pin 100-HP	1
	130000	Gearbox, Slipclutch 100-HP	1
2	110003	Snap Ring 1-3/8"	1
3	110068	Bolt, Lockwasher & Locknut Kit 3/4" x 3" (for 1300)	1
4	110005	Gearbox Shield, Shear Pin G/B	1
	120001	Gearbox Shield, Slipclutch G/B	1
5	110006	Bolt & Lockwasher Kit 5/16" x 1/2" (4-Pack)	1
6	110007	Shear Pin Bolt & Locknut Kit 1/2" x 3" Grade 2 (5-Pack)	1
7	110008	Gearbox Vent Plug	1
8	110009	Gearbox Drain Plug	1
9	* Ref	Retaining Bolt for Slipclutch	1

\*Refer to Driveline breakdown

## 13.5 Gearbox

### 1400 Series Gearbox

Item	Part #	Description	Qty
1	140000	Gearbox, Shear Pin 75-HP	1
	140001	Gearbox, Slipclutch 75-HP	1
2	110003	Snap Ring 1-3/8"	1
3	110004	Bolt, Lockwasher & Locknut Kit 5/8" x 2" (for 1400)	1
	110068	Bolt, Lockwasher & Locknut Kit 3/4" x 3" (for 1400)	1
4	110005	Gearbox Shield, Shear Pin G/B	1
	120001	Gearbox Shield, Slipclutch G/B	1
5	110006	Bolt & Lockwasher Kit 5/16" x 1/2" (4-Pack)	1
6	110007	Shear Pin Bolt & Locknut Kit 1/2" x 3" Grade 2 (5-Pack)	1
7	110008	Gearbox Vent Plug	1
8	110009	Gearbox Drain Plug	1
9	* Ref	Retaining Bolt for Slipclutch	1

### 1500 Series Gearbox

Item	Part #	Description	Qty
1	130000	Gearbox, Slipclutch 100-HP (for 1505-1506)	1
	150026	Gearbox, Slipclutch 540-RPM (for 1507)	1
2	---	Intentionally Left Blank	---
3	110068	Bolt, Lockwasher & Locknut Kit 3/4" x 3" (for 1400)	1
4	110005	Gearbox Shield, Shear Pin G/B	1
	120001	Gearbox Shield, Slipclutch G/B	1
5	110006	Bolt & Lockwasher Kit 5/16" x 1/2" (4-Pack)	1
	110017	Bolt & Lockwasher Kit 1/2" x 1-1/2" (3-Pack) for 1507-1506-1607	1
6	---	Intentionally Left Blank	---
7	110008	Gearbox Vent Plug	1
8	110009	Gearbox Drain Plug	1
9	* Ref	Retaining Bolt for Slipclutch	1

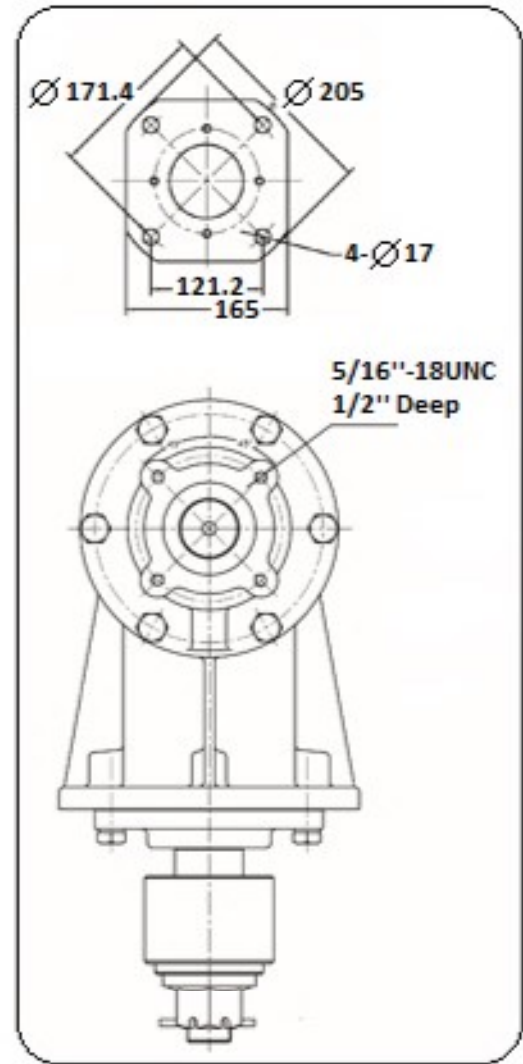
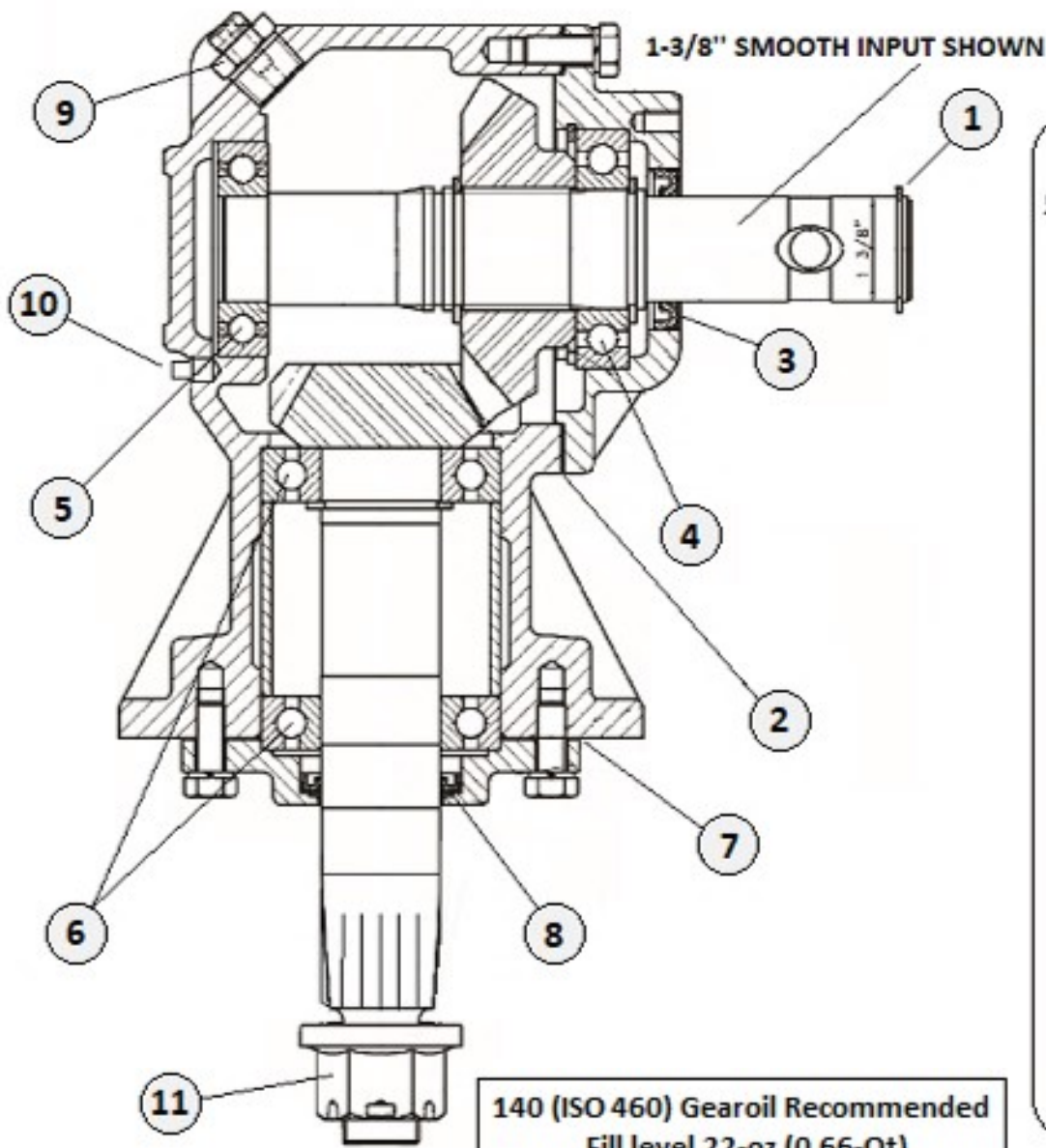
### 1600 Series Gearbox

Item	Part #	Description	Qty
1	130000	Gearbox, Slipclutch 100-HP	1
2	---	Intentionally Left Blank	---
3	110068	Bolt, Lockwasher & Locknut Kit 3/4" x 3" (for 1400)	1
4	150076	Gearbox Shield, Slipclutch G/B	1
5	110017	Bolt & Lockwasher Kit 1/2" x 1-1/2" (3-Pack) for 1507-1506-1607	1
6	---	Intentionally Left Blank	---
7	110008	Gearbox Vent Plug	1
8	110009	Gearbox Drain Plug	1
9	* Ref	Retaining Bolt for Slipclutch	1

\*Refer to Driveline breakdown

# 55-Hp Gearbox

Used on Models:  
1204 -1205 -1206



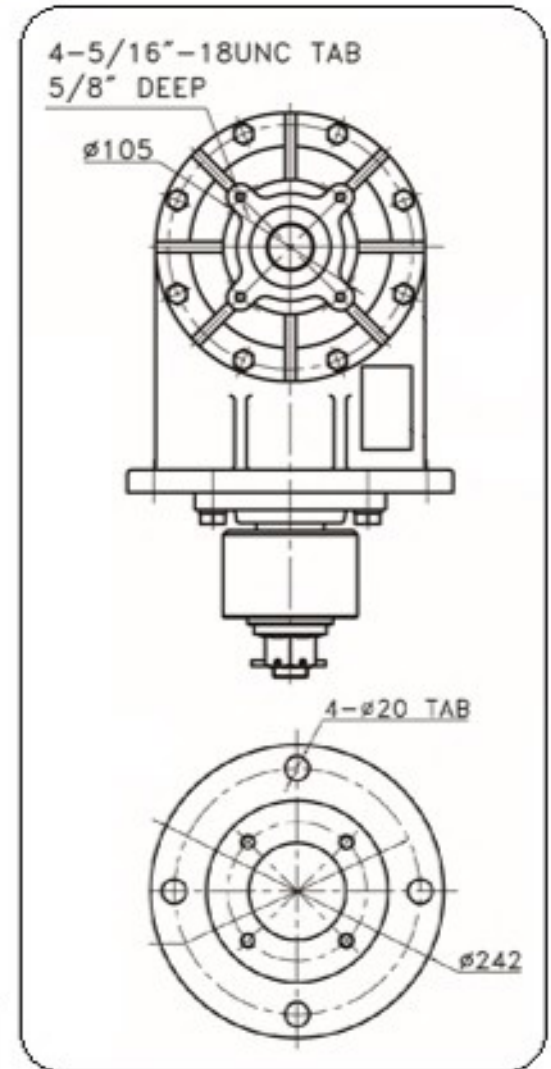
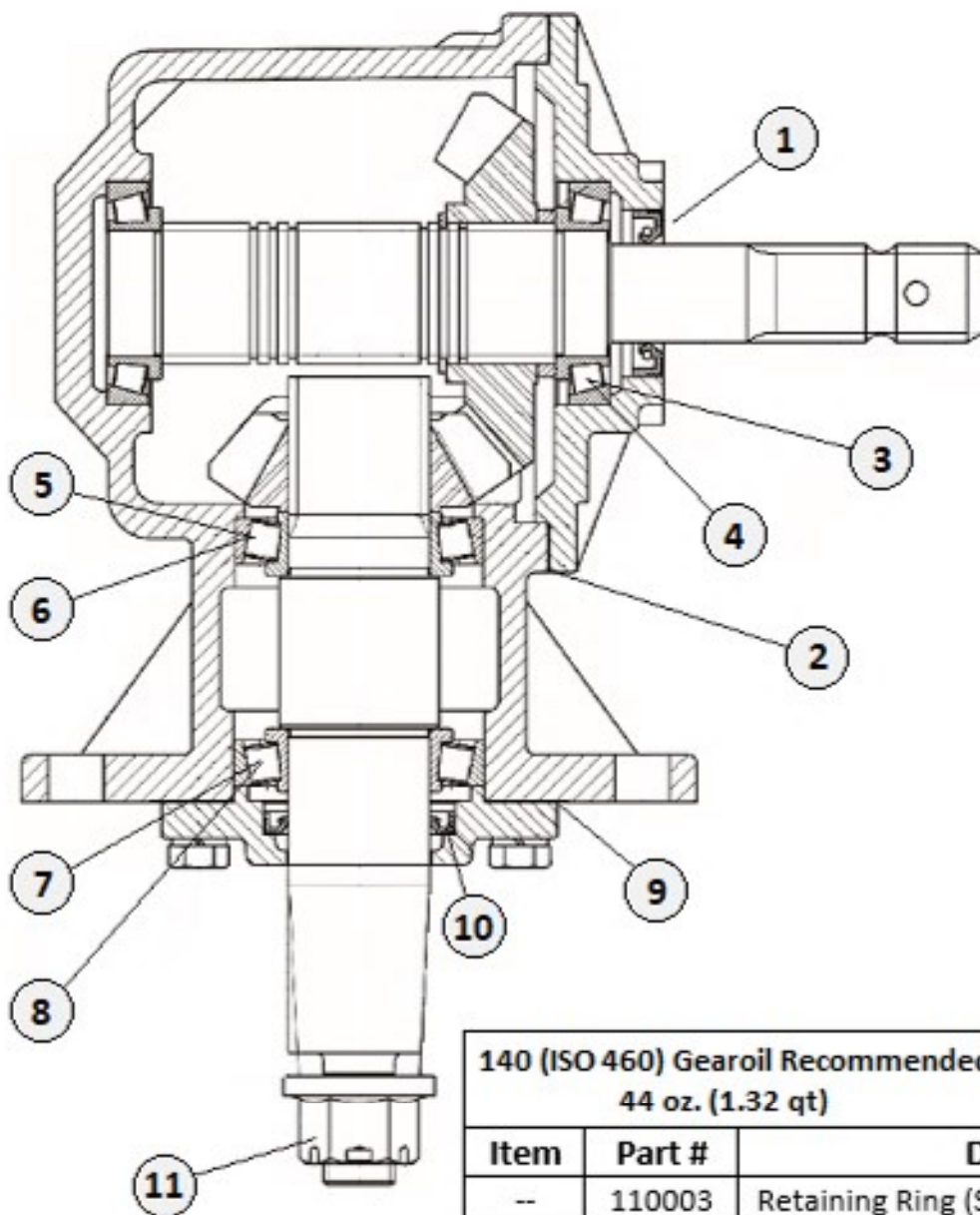
140 (ISO 460) Gearoil Recommended  
Fill level 22-oz (0.66-Qt)

Item	Part #	Description	Qty
1	110003	Retaining Ring	1
2	551000	Input Gasket Kit	1
3	551001	Input Seal	1
4	551004	Input Bearing – Front	1
5	551005	Input Bearing – Rear	1
6	551006	Output Bearing	2
7	551007	Output Gasket Kit	1
8	551008	Output Seal	1
9	110008	Pressure Relief Plug	1
10	110009	Pipe Plug (Square Head)	1
11	110013	Castle Nut / Cotter Pin Kit – 1" Fine Thread	1
	<b>110001</b>	<b>Complete Gearbox (1-3/8" Smooth) Shown</b>	
	<b>120000</b>	<b>Complete Gearbox (1-3/8" 6-S) Not Shown</b>	

# 100 Hp GEARBOX

Not Shown:

- 12 — PRESSURE RELIEF PLUG
- 13 — PIPE PLUG (SQUARE HEAD)



**140 (ISO 460) Gearoil Recommended  
44 oz. (1.32 qt)**

Item	Part #	Description	Qty
--	110003	Retaining Ring (Shear Pin Only)	1
1	551020	Input Seal 35 x 60 x 12	1
2	551021	Input Gasket Kit	1
3	551022	Input Cone Bearing	2
4	551023	Input Bearing Cup	2
5	551024	Output Cone Bearing – Top	1
6	551025	Output Bearing Cup – Top	1
7	551026	Output Cone Bearing – Bottom	1
8	551027	Output Bearing Cup – Bottom	1
9	551028	Output Gasket Kit	1
10	551029	Output Seal 50 x 68.5 x 10	1
11	110013	Castle Nut / Cotter Pin Kit – 1" Fine Thread	1
12	110008	Pressure Relief Plug	1
13	110009	Pipe Plug (Square Head)	1
<b>130000</b>	<b>Complete Gearbox (1-3/8" Spline) Shown</b>		
<b>110002</b>	<b>Complete Gearbox (1-3/8" Smooth) Not Shown</b>		

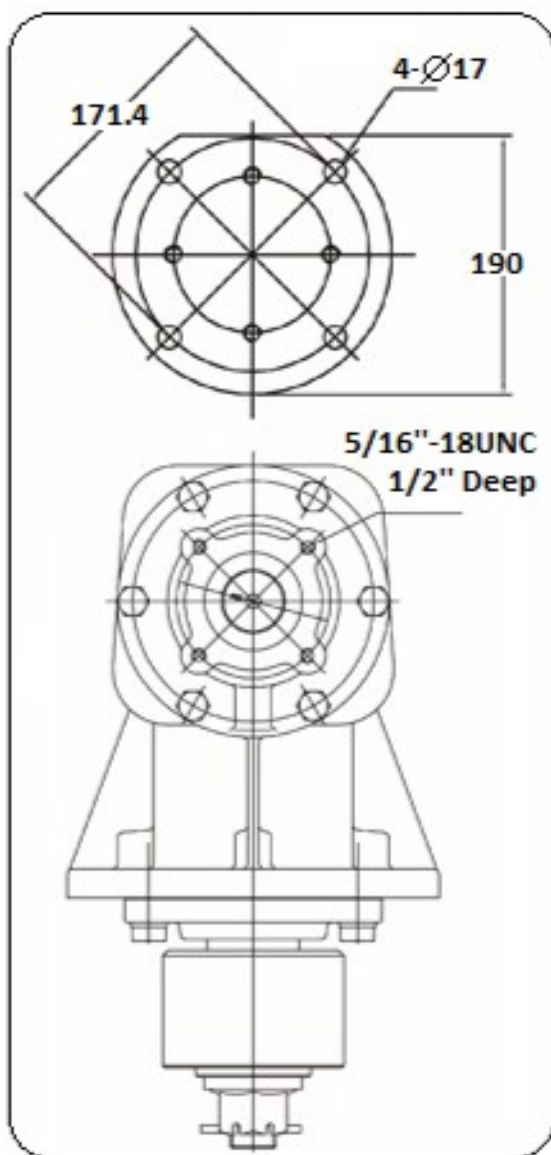
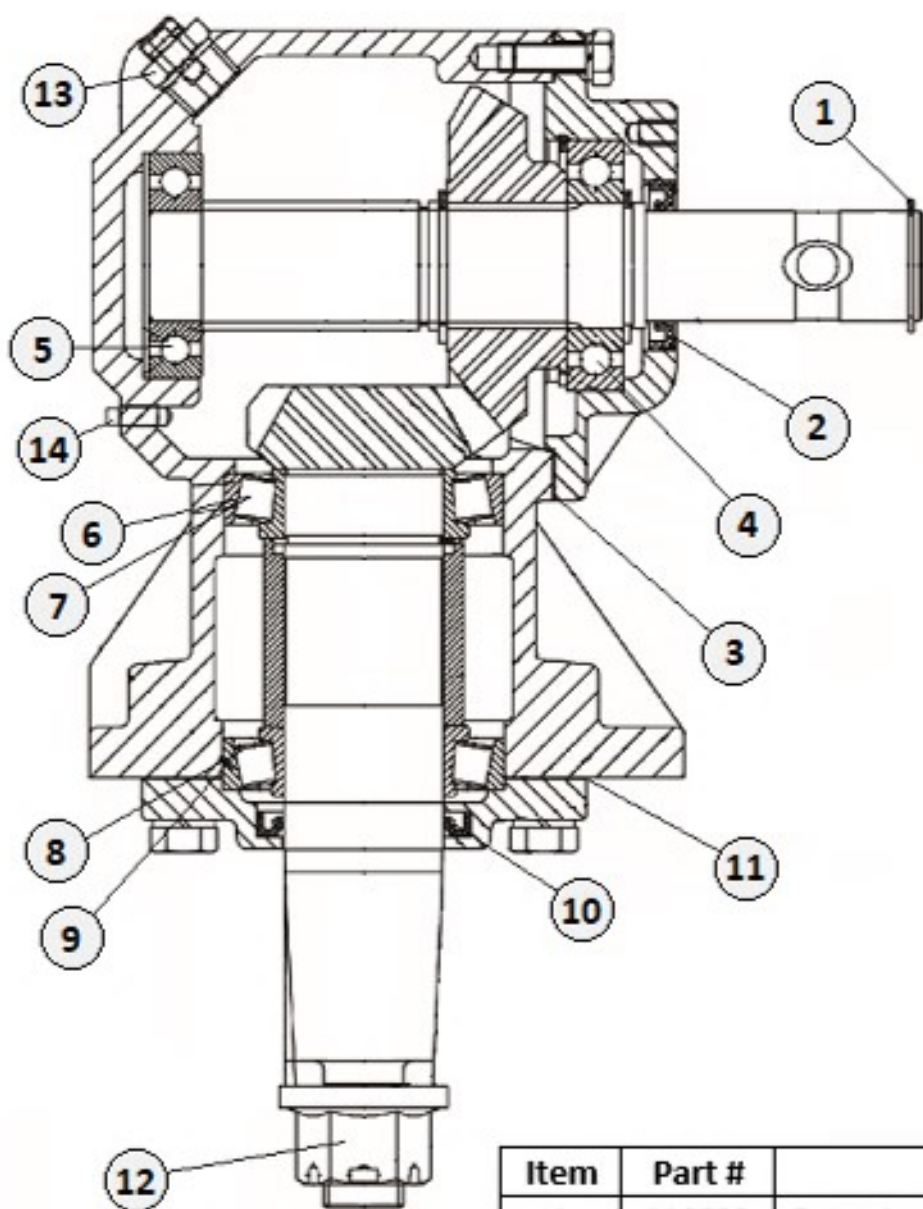
**used on Models:**

**1305 - 1306**

**1505 - 1506**

**1606 - 1607**

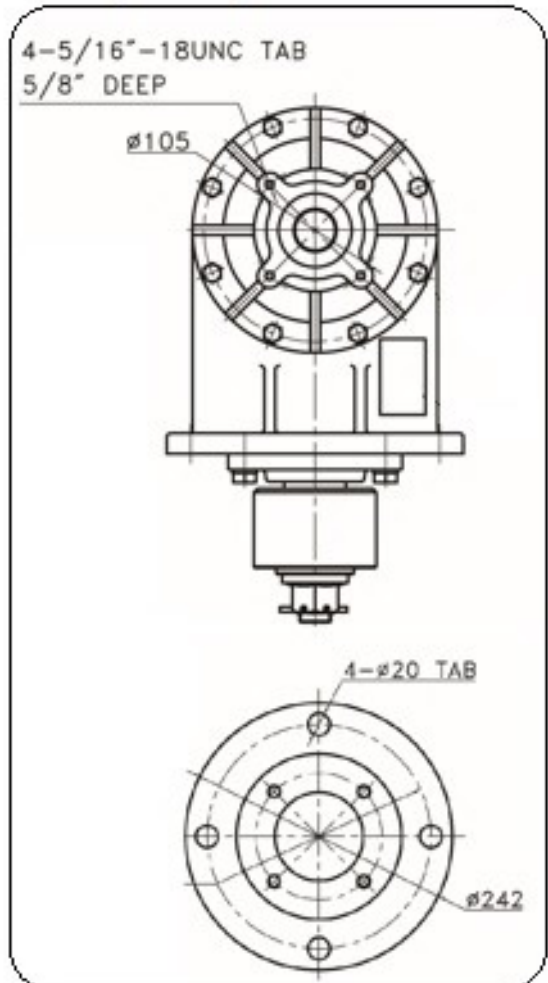
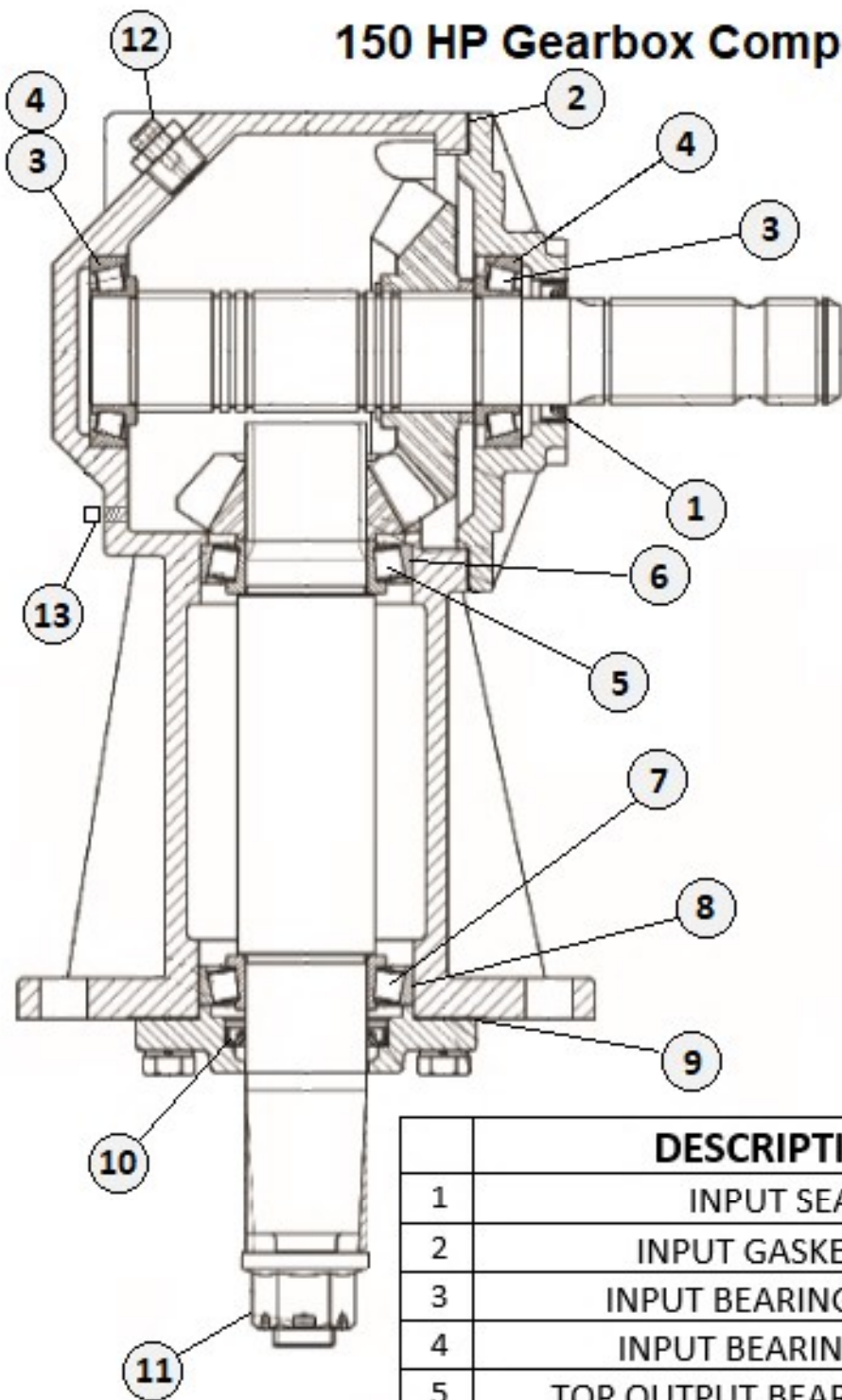
75 Hp GEARBOX used on MODELS: 1405 - 1406



Recommended  
140 (ISO 460) Gearoil  
30 oz. (.90 qt)

Item	Part #	Description	Qty
1	110003	Retaining Ring (Shear Pin Only)	1
2	551001	Input Seal	1
3	551000	Input Gasket Kit	1
4	551004	Input Bearing - Front	1
5	551005	Input Bearing - Rear	1
6	551024	Output Cone Bearing - Top	1
7	551025	Output Bearing Cup - Top	1
8	551026	Output Cone Bearing - Bottom	1
9	551027	Output Bearing Cup - Bottom	1
10	551030	Output Gasket Kit	1
11	551029	Output Seal 50 x 68.5 x 10	1
12	110013	Castle Nut / Cotter Pin Kit - 1" Fine Thread	1
13	110008	Pressure Relief Plug	1
14	110009	Pipe Plug (Square Head)	1
<b>140000</b>		<b>Complete Gearbox (1-3/8" Spline) Not Shown</b>	
<b>140001</b>		<b>Complete Gearbox (1-3/8" Smooth) Shown</b>	

# 150 HP Gearbox Components (1507)

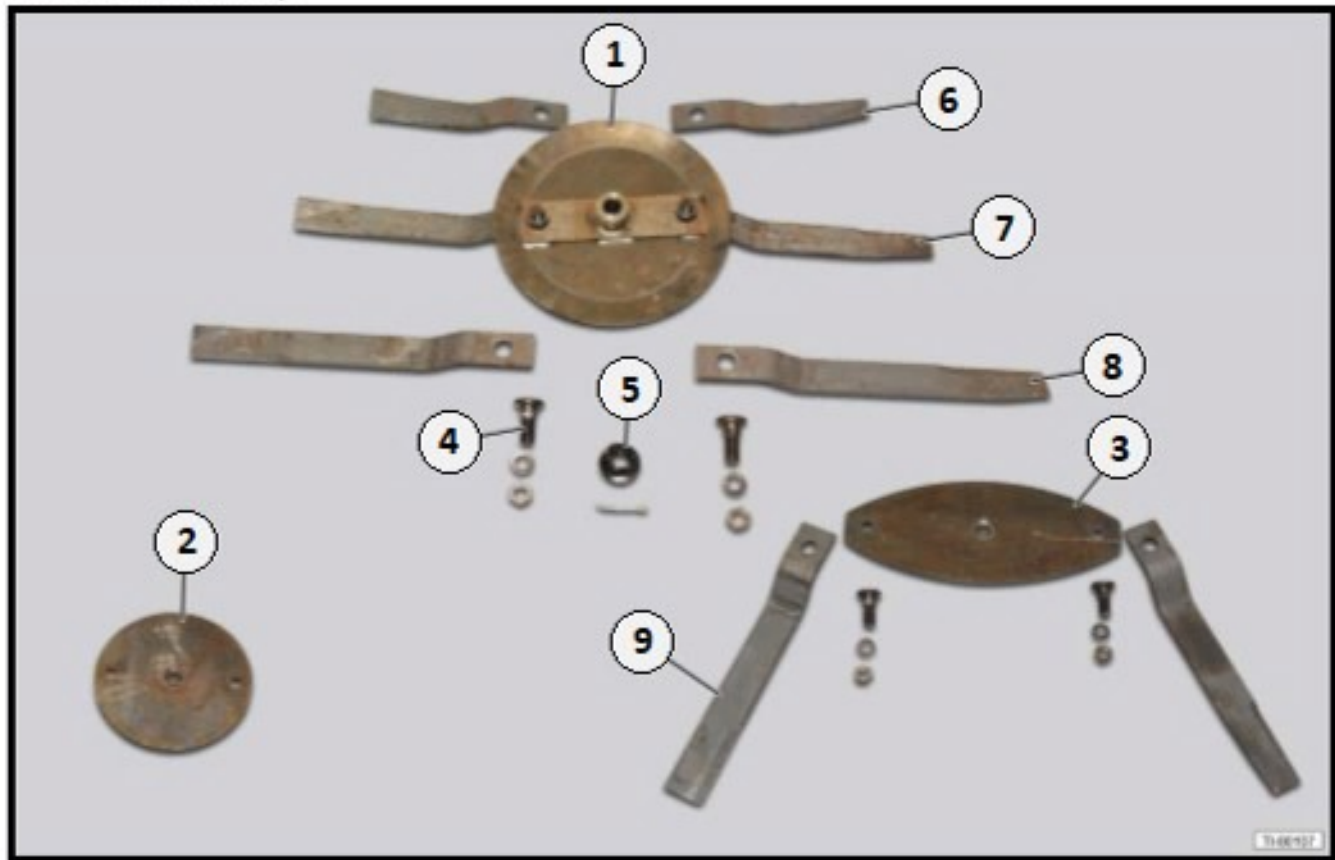


140 (ISO 460) Gearoil Recommended  
38 oz. (1.14 qt)

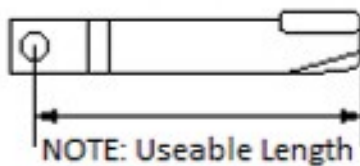
	DESCRIPTION	Item #	Qty
1	INPUT SEAL	551040	1
2	INPUT GASKET KIT	551021	1
3	INPUT BEARING CONE	551022	2
4	INPUT BEARING CUP	551023	2
5	TOP OUTPUT BEARING CONE	551024	1
6	TOP OUTPUT BEARING CUP	551025	1
7	BOTTOM OUTPUT BEARING CONE	551026	1
8	BOTTOM OUTPUT BEARING CUP	551027	1
9	OUTPUT GASKET KIT	551028	1
10	OUTPUT SEAL	551029	1
11	CASTLE NUT/COTTER PIN KIT	110013	1
12	PRESSURE RELIEF PLUG	110008	1
13	SQ. HEAD PIPE PLUG	110009	1
<b>COMPLETE G/BOX 150-HP (540 RPM)</b>		<b>150026</b>	



### 13.6 Blade Assembly

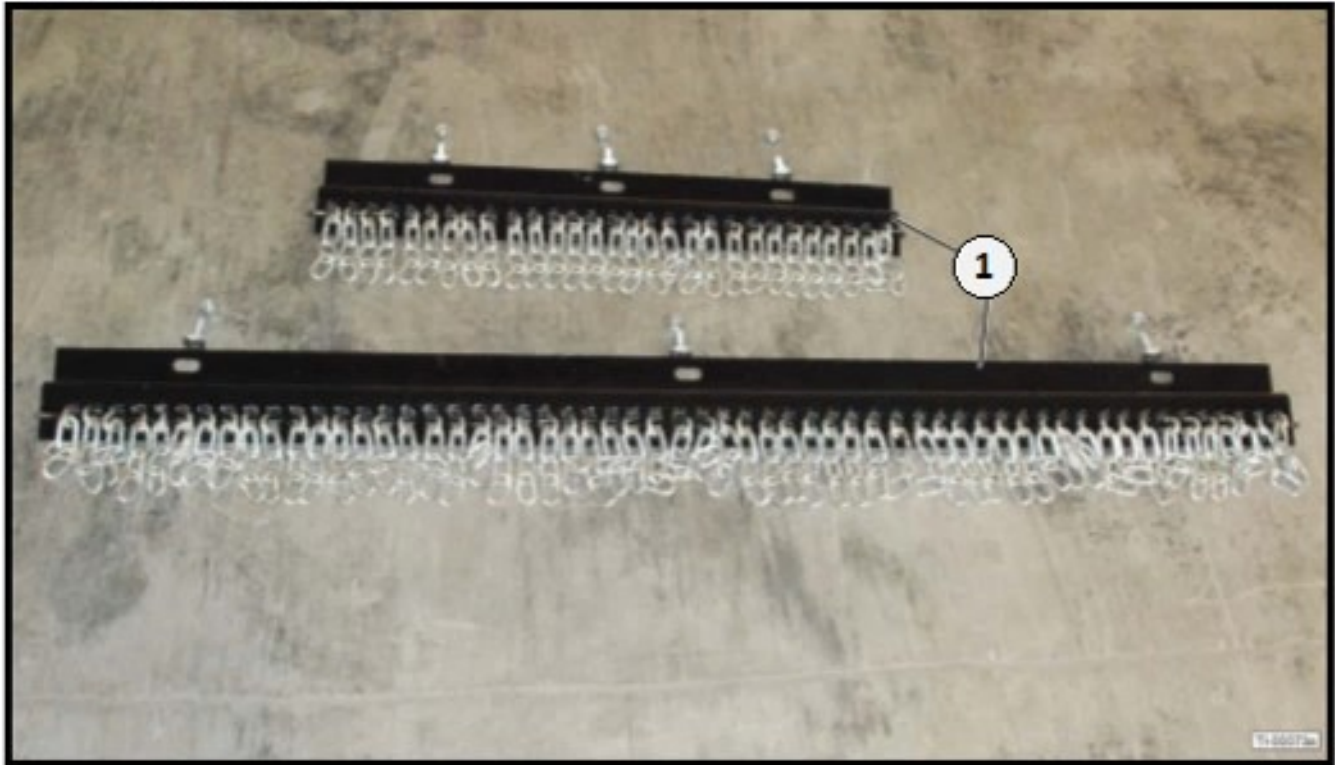


Item	Part #	Description	Qty
1	110010	Blade Carrier, 4-5-6 ft 55-HP (for 1204-1205-1206) (Bolt holes 13" Ctr to Ctr)	1
	110011	Blade Carrier, 6 ft 100-HP (for 1400) with Big Hub (Bolt holes 13" Ctr to Ctr)	1
2	130014	Blade Carrier, 6 ft 100-HP (1305-1306-1405-1406-1505-1506-1606) Flat Type (Bolt Holes 24.75" Ctr to Ctr)	1
3	150029	Blade Carrier, 3/4" x 29-1/2" (for 1507-1607) Football Type (Bolt Holes 24.75" Ctr to Ctr)	1
4	110012	Blade Bolt, Lockwasher & Nut Kit (2-Pack)	1
5	110013	Blade Carrier Retainer Kit - with 1" Fine Thread Nut & 1/8" Cotter Pin	1
6	T-48	Cutter Blades for 4-ft (Sold in Pairs) Useable Length 16"	1
7	T-60	Cutter Blades for 5-ft (Sold in Pairs) Useable Length 22"	1
8	T-72	Cutter Blades for 6-ft (Sold in Pairs) Useable Length 27"	1
	T-72-HD	Cutter Blades for 6-ft H.D. 1606 (Sold in Pairs)	1
9	T-84-HD	Cutter Blades for 7-ft H.D. 1507-1607 (Sold in Pairs)	1



NOTE: Uses 1-11/16" Socket size for Blade Bolt Nut

### 13.7 Optional Chain Shield



Item	Part #	Description	Qty
1	CG-1204	Front & Rear Chain Shield Kit 4-ft	1
	CG-1205	Front & Rear Chain Shield Kit 5-ft	1
	CG-1206	Front & Rear Chain Shield Kit 6-ft	1
	CG-1305	Front & Rear Chain Shield Kit 5-ft	1
	CG-1306	Front & Rear Chain Shield Kit 6-ft	1
	CG-1405	Front & Rear Chain Shield Kit 5-ft	1
	CG-1406	Front & Rear Chain Shield Kit 6-ft	1
	CG-1505	Front & Rear Chain Shield Kit 5-ft	1
	CG-1506	Front & Rear Chain Shield Kit 6-ft	1
	CG-1507	Front & Rear Chain Shield Kit 7-ft	1
	CG-1606	Front & Rear Chain Shield Kit 6-ft	1
	CG-1607	Front & Rear Chain Shield Kit 7-ft	1