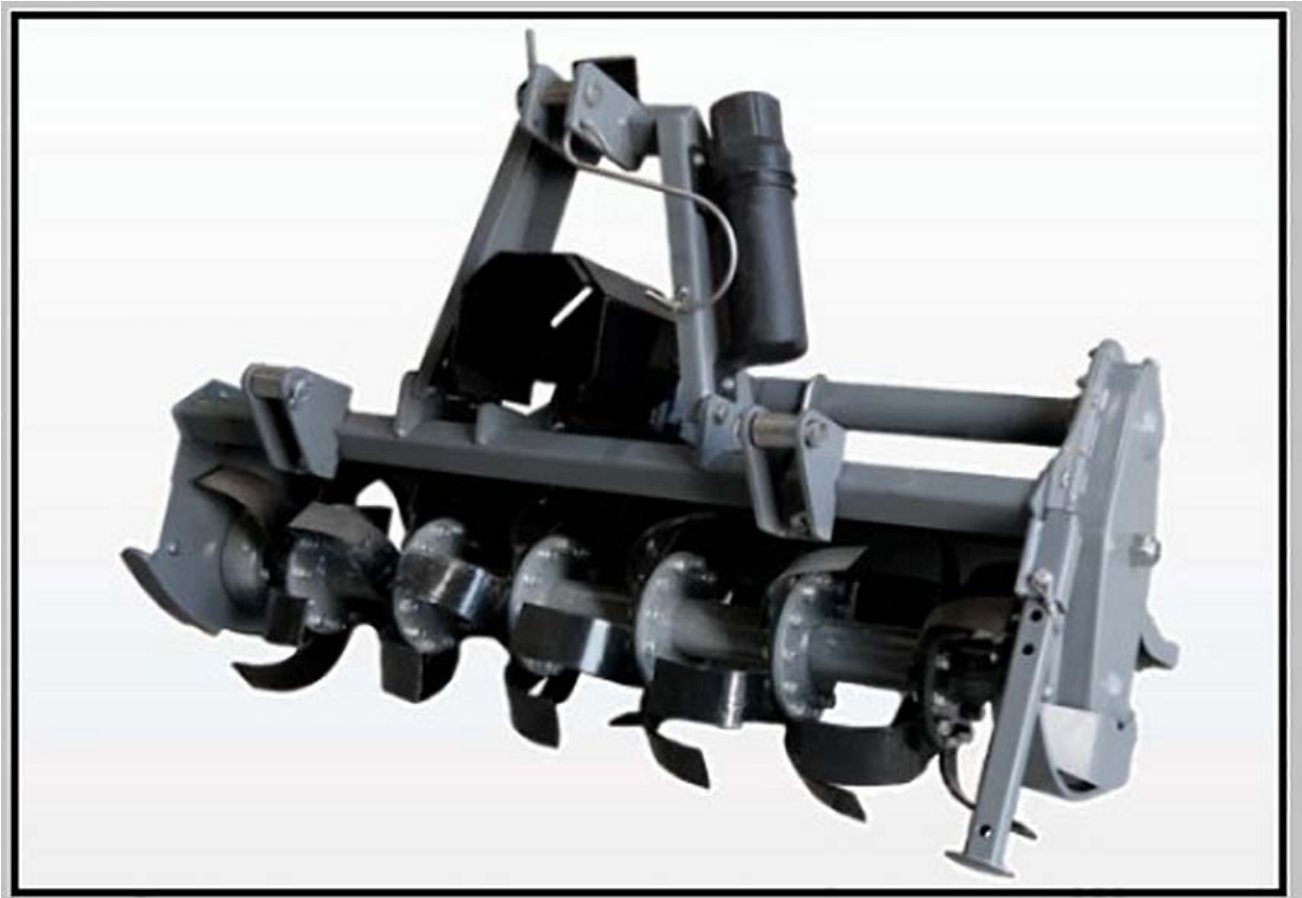




# IRONCRAFT

Contact your Authorized Ironcraft Dealer  
for all your parts needs



# UL SERIES ROTARY TILLER PARTS MANUAL

# Specifications

	<b>TILLER MODEL</b>		
		<b>UL1.2 (UL48)</b>	<b>UL1.5 (UL60)</b>
<b>Overall dimensions</b>	mm	1340 x 805 x 600	1645 x 805 x 600
<b>Tilling width</b>	in	48"	60"
	cm	122	153
<b>Recommended Tractor HP range</b>	HP	20-35	25-40
<b>3-point Hitch type</b>	-	Cat. I, Compatible Quick Hitch I cat. ASAE	Cat. I, Compatible Quick Hitch I cat. ASAE
<b>Frame off-set</b>	in	4" or NIL*	-
<b>Number of Flanges on Rotor</b>	No.	6	7
<b>Number of tines per Flange</b>	No.	36	42
<b>PTO Input speed</b>	rpm	540	540
<b>Rotor Shaft Speed</b>	rpm @540	245	245
<b>Standard Tine Construction</b>	-	curved	curved
<b>Transmission type</b>	-	gear	gear
<b>Max Working depth</b>	cm	16	16
<b>Rotor tube diameter</b>	mm	70	70
<b>Rotor Swing Diameter</b>	mm	375	375
<b>Driveline safety device</b>	-	slip clutch	slip clutch
<b>Weight (driveline excluded)</b>	lbs	399	441
	Kg.	181	200

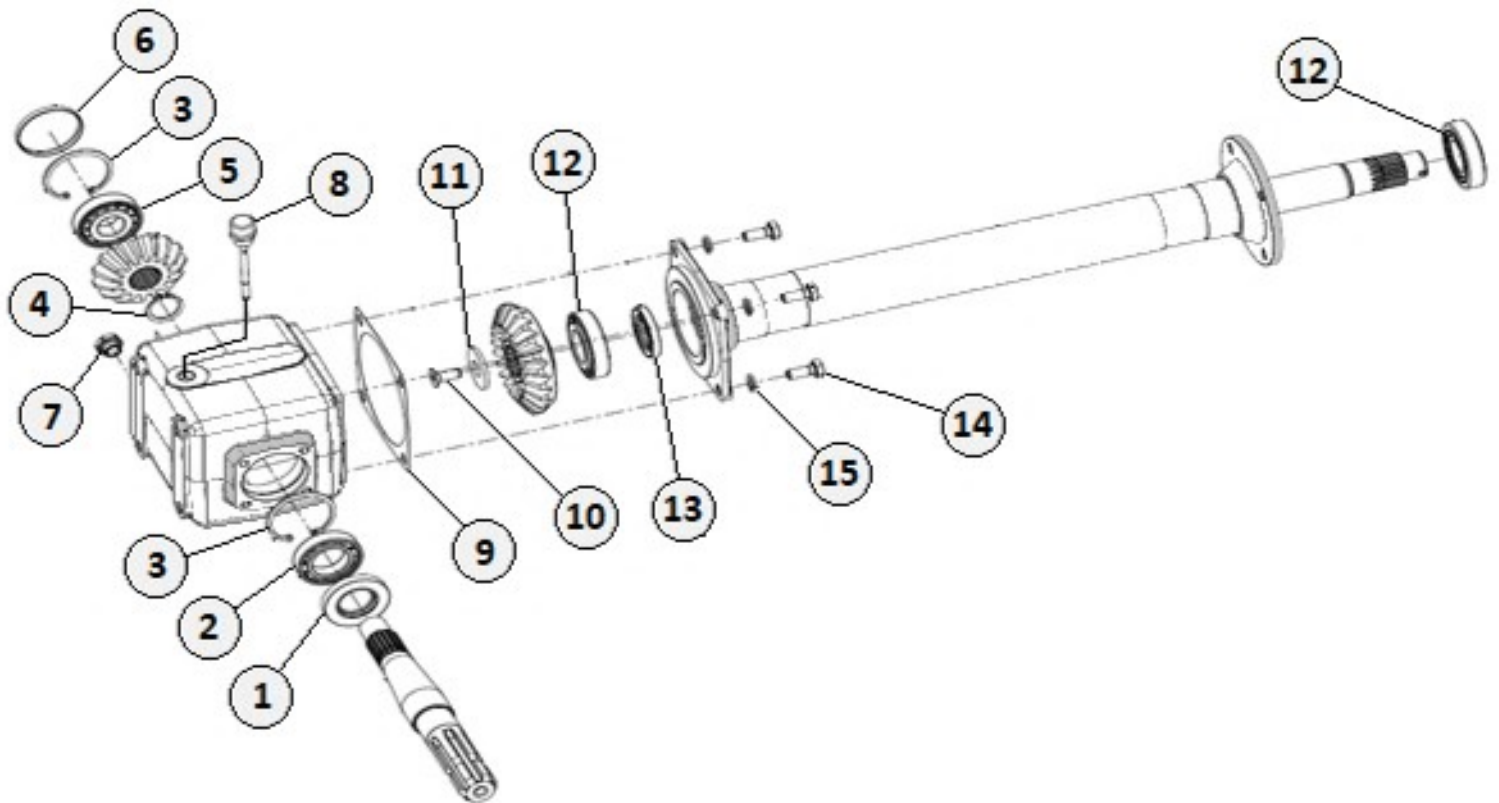


## MAIN FRAME COMPONENTS

Item	Part #	Description	Qty
1	SK14239	TOP MAST	1
2	SK14038	TOP LINK BUSHING	1
3	SK14037	TOP HITCH PIN CAT. I	1
4	SK14172	PTO SHIELD	1
5	SK10211	TOP GEARBOX – 48"	A/R
	SK14079	TOP GEARBOX – 60"	A/R
6	SK14008	U-BOLT M10	1
7	SK14011	LOWER HITCH BRACKET	2
8	SK14015	LOWER HITCH PIN CAT. I	2
9	SK14016	LOWER HITCH BUSHING	2
10	SK1574	NYLOCK NUT M14 X 2	4
11	SK14014	V-BOLT M14	2
12	SK14258	CHAIN LIFT HOOK	1
13	SK14042	GEARBOX MOUNTING PLATE	1
14	SK14027	SHAFT MOUNTING PLATE	1
15	SK17272	HEX NUT M10 X 1.5	2
16	SK14004	J-BOLT M12	1
17	SK14073	TAILGATE LIFT CHAIN	1
18	SK14005	J-BOLT SPRING	1
19	SK8126	PLAIN WASHER M12	1
20	SK1209	NYLOCK NUT M12 X 1.75	1
21	SK10210	TAILGATE ROD – 48"	A/R
	SK14050	TAILGATE ROD – 60"	A/R
22	SK14272	TAILGATE – 48"	A/R
	SK14003	TAILGATE – 60"	A/R
23	SK14010	RH SKID SHOE	1
24	SK14009	LH SKID SHOE	1
25	SK14020	DUST COVER	2
26	SK10209	ROTOR – 48"	A/R
	SK14002	ROTOR – 60"	A/R
27	SK14041	LH "C" TINE (48" Tiller)	18
	SK14041	LH "C" TINE (60" Tiller)	21
28	SK14040	RH "C" TINE (48" Tiller)	18
	SK14040	RH "C" TINE (60" Tiller)	21
29	SK14324	HEX BOLT M12 X 1.25 X 30	A/R
30	SK14336	HEX NUT M12 X 1.25	A/R
31	SK14339	LOCK WASHER M12	A/R
32	SK14078	RH END PLATE ASSEMBLY	1
33	SK14131	O-RING M30 X 3.50	1
34	SK14030	SIDE COVER GASKET	1
35	SK14007	SIDE COVER	1
36	SK14012	STAND MOUNTING BRACKET	1
37	SK14013	STAND	1
38	SK14266	SQ. PLASTIC CAP 32mm	1
39	SK14065	NYLOCK NUT M24 X 2	1
40	SK14310	BEATHER PLUG 1/2"	1
41	SK8032	CASTLE NUT M28	1
42	SK14077	LH SIDE PLATE ASSEMBLY	1
43	SK14031	FLANGE GASKET	1
44	SK14313	OIL LEVEL PLUG (Site Glass)	1
45	SK26030	DOCUMENT HOLDER	1

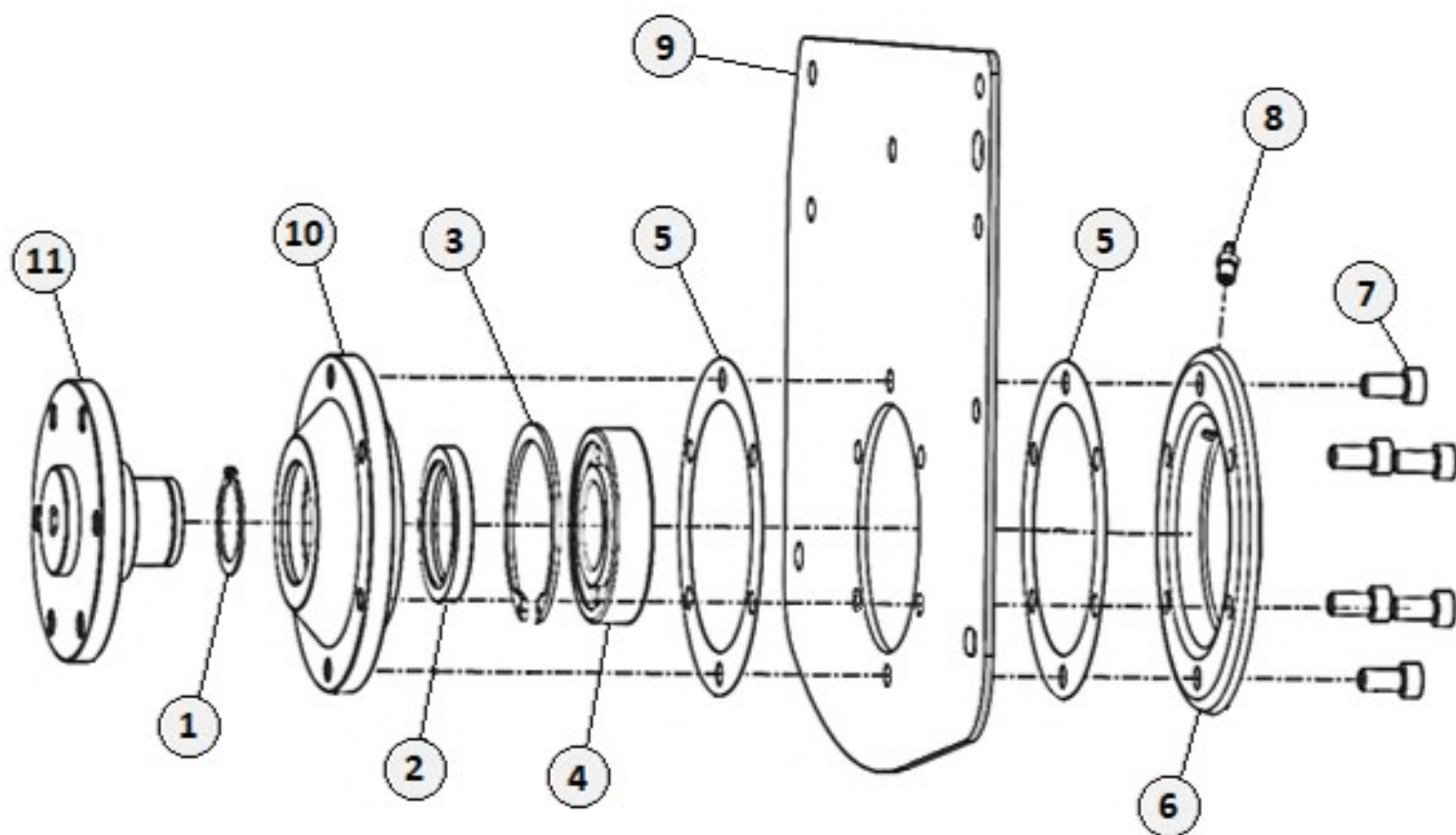
A/R = As Required

# TOP GEARBOX COMPONENTS



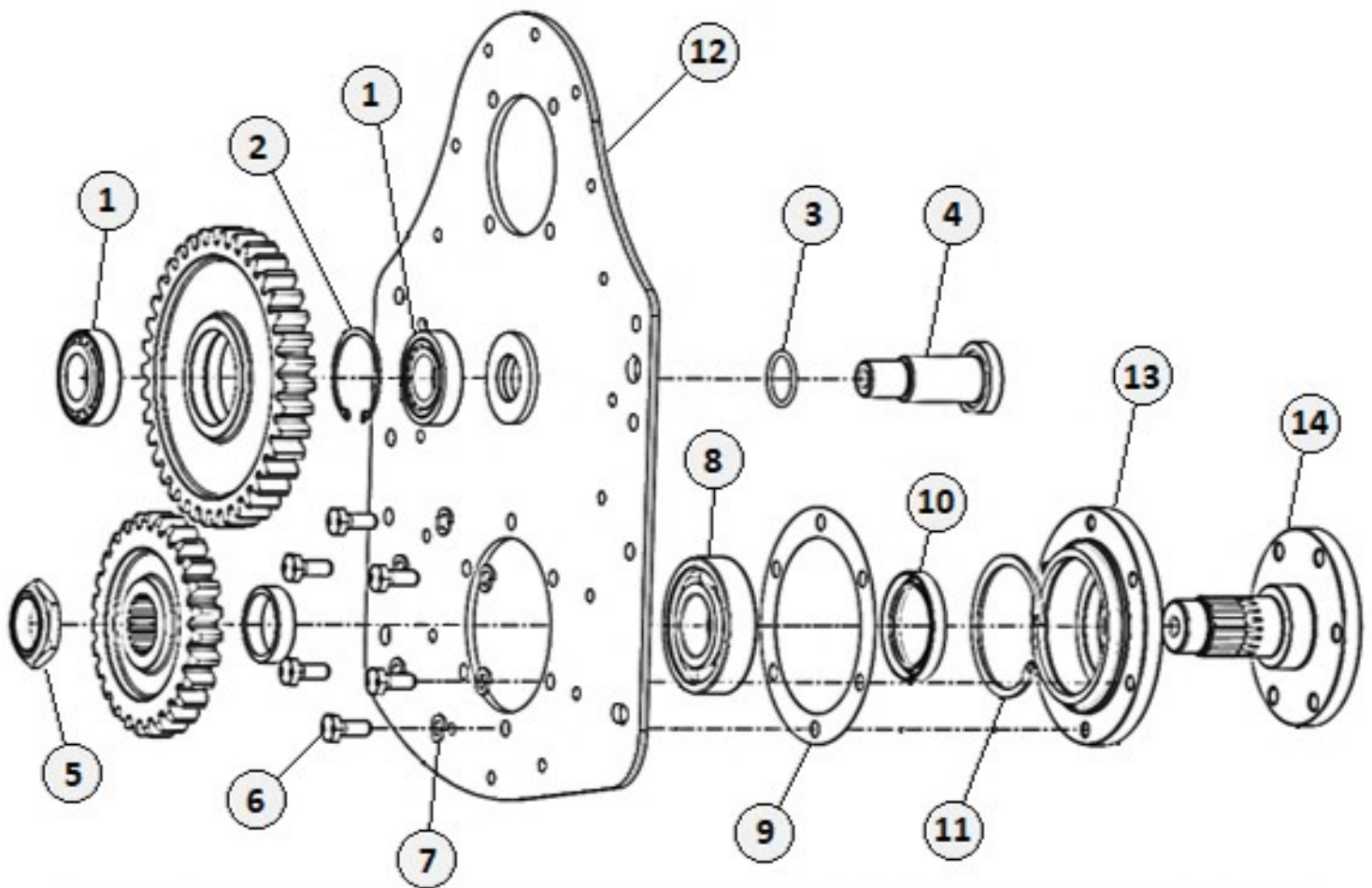
	<b>PART #</b>	<b>DESCRIPTION</b>	<b>Qty</b>
<b>1</b>	SK14057	INPUT OIL SEAL 35 X 62 X 10	<b>1</b>
<b>2</b>	SK14054	BEARING 6007	<b>1</b>
<b>3</b>	SK8120	CIRCLIP INTERNAL 62mm	<b>2</b>
<b>4</b>	SK11058	CIRCLIP EXTERNAL 30mm	<b>1</b>
<b>5</b>	SK14053	BEARING 30305	<b>1</b>
<b>6</b>	SK14075	OIL SEAL PLUG 62 X 7	<b>1</b>
<b>7</b>	SK14312	DRAIN PLUG 3/8"	<b>1</b>
<b>8</b>	SK14317	DIPSTICK BREATHER M16 X 1.5 X 90	<b>1</b>
<b>9</b>	SK14044	FLANGE GASKET	<b>1</b>
<b>10</b>	SK14058	CSK BOLT M10 X 1.5 X 25	<b>1</b>
<b>11</b>	SK14049	CROWN WASHER	<b>1</b>
<b>12</b>	SK1003	BEARING 30207	<b>2</b>
<b>13</b>	SK14056	OIL SEAL 35 X 55 X 8	<b>1</b>
<b>14</b>	SK17270	HEX BOLT M10 X 1.5 X 25 (8.8)	<b>4</b>
<b>15</b>	SK1304	LOCK WASHER 10mm	<b>4</b>
	SK10211	TOP GEARBOX (48" TILLER)	<b>1</b>
	SK14079	TOP GEARBOX (60" TILLER)	<b>1</b>

# RH SIDE PLATE COMPONENTS



	<b>PART #</b>	<b>DESCRIPTION</b>	<b>Qty</b>
1	SK8027	CIRCLIP EXTERNAL 40mm	1
2	SK14051	OIL SEAL 55 X 72 X 10	1
3	SK3027	CIRCLIP INTERNAL 90mm	1
4	SK8036	BEARING 6308	1
5	SK14018	END COVER GASKET	2
6	SK14256	END COVER	1
7	SK2833	ALLEN BOLT M10 X 1.5 X 25	6
8	SK1253	1/8 GREASE ZERK 7.5mm	1
9	SK14078	COMPLETE SIDE PLATE ASSY	1
10	SK14019	ROTOR SHAFT HOUSING	1
11	SK14021	STUB SHAFT	1

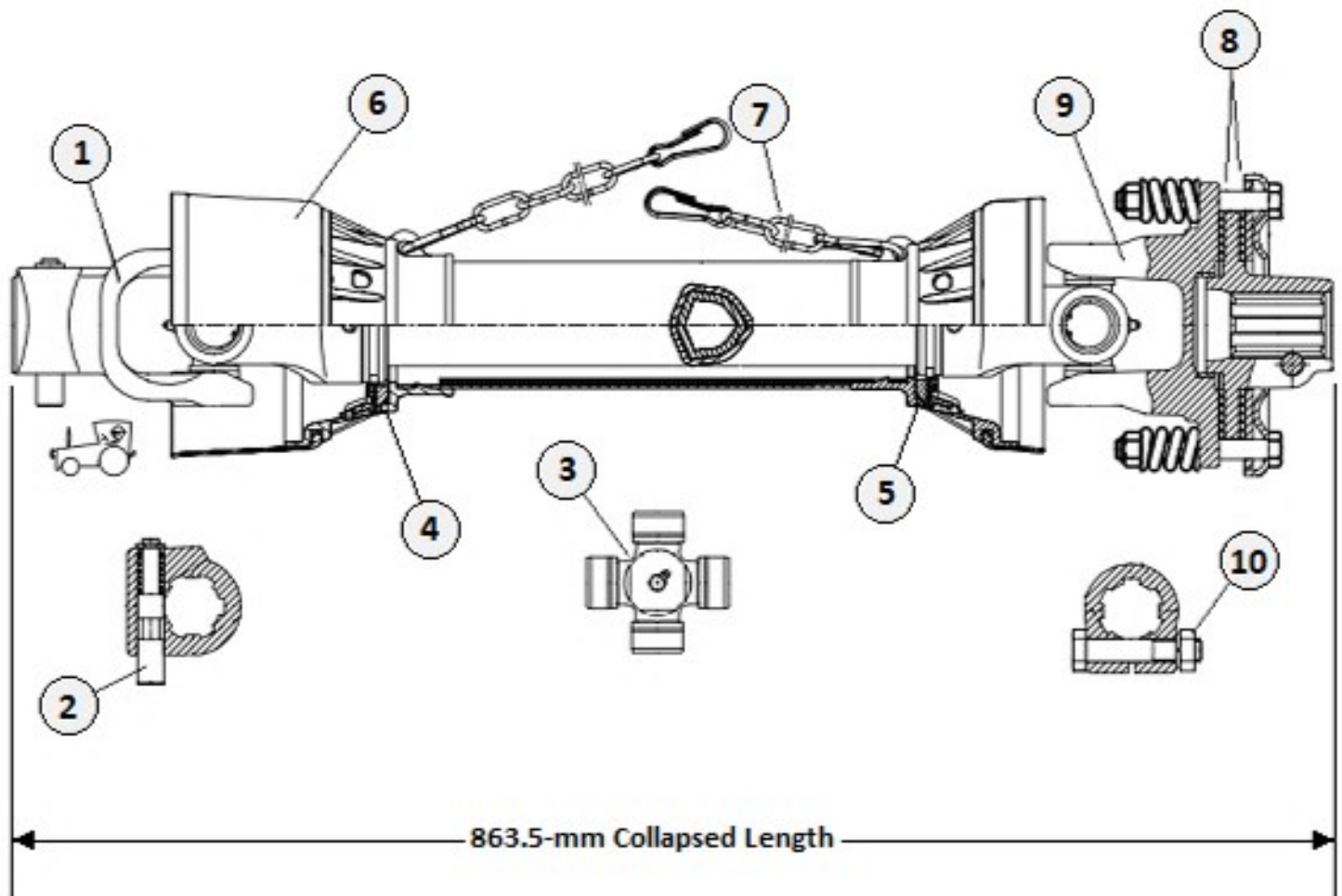
# LH SIDE PLATE COMPONENTS



	<b>PART #</b>	<b>DESCRIPTION</b>	<b>Qty</b>
1	SK14055	BEARING 30206	2
2	SK8120	CIRCLIP INTERNAL 62mm	1
3	SK14131	O-RING M30 X 3.50	1
4	SK14025	STUB SHAFT	1
5	SK1449	NYLOCK NUT M35 X 1.5	1
6	SK17270	HEX BOLT M10 X 1.5 X 25 (8.8)	6
7	SK1304	LOCK WASHER 10mm	6
8	SK8036	BEARING 6308	1
9	SK14018	END COVER GASKET	1
10	SK14051	OIL SEAL 55 X 72 X 10	1
11	SK3027	CIRCLIP INTERNAL 90mm	1
12	SK14077	COMPLETE LH END PLATE ASSY	1
13	SK14019	ROTOR SHAFT HOUSING	1
14	SK14022	STUB SHAFT	1

# SLIPCLUTCH DRIVELINE COMPONENTS

## FITS 4' - 5' - 6' TILLER



Item	Part #	Description	Qty
1	552000	Tractor Yoke 1-3/8" 6-Spline	1
2	552001	Push Pin Kit	1
3	552003	Cross Kit 27 x 74.6	1
4	552008	Outer Plastic Shield Bearing	1
5	552009	Inner Plastic Shield Bearing	1
6	*552002	Complete Safety Shield	1
7	552005	Safety Chain	2
8	552010	Clutch Lining (2-Pack)	1
9	552011	Complete Slipclutch	1
10	552012	Bolt M12 x 70 W/Nut	1
<b>*210046</b>		<b>Complete Driveline with Slipclutch</b>	

\*May need to cut to length to fit certain 4 & 5-ft applications