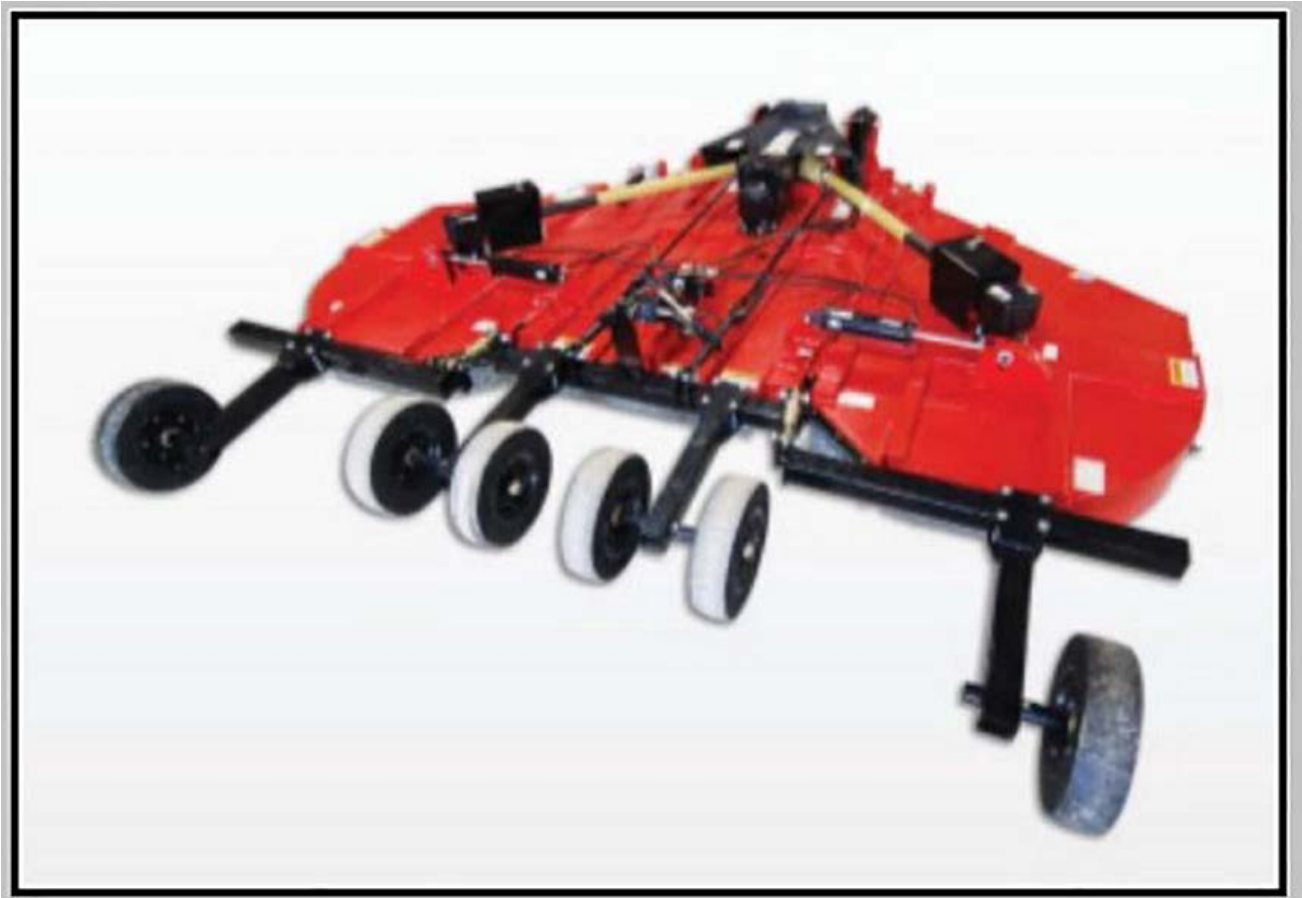


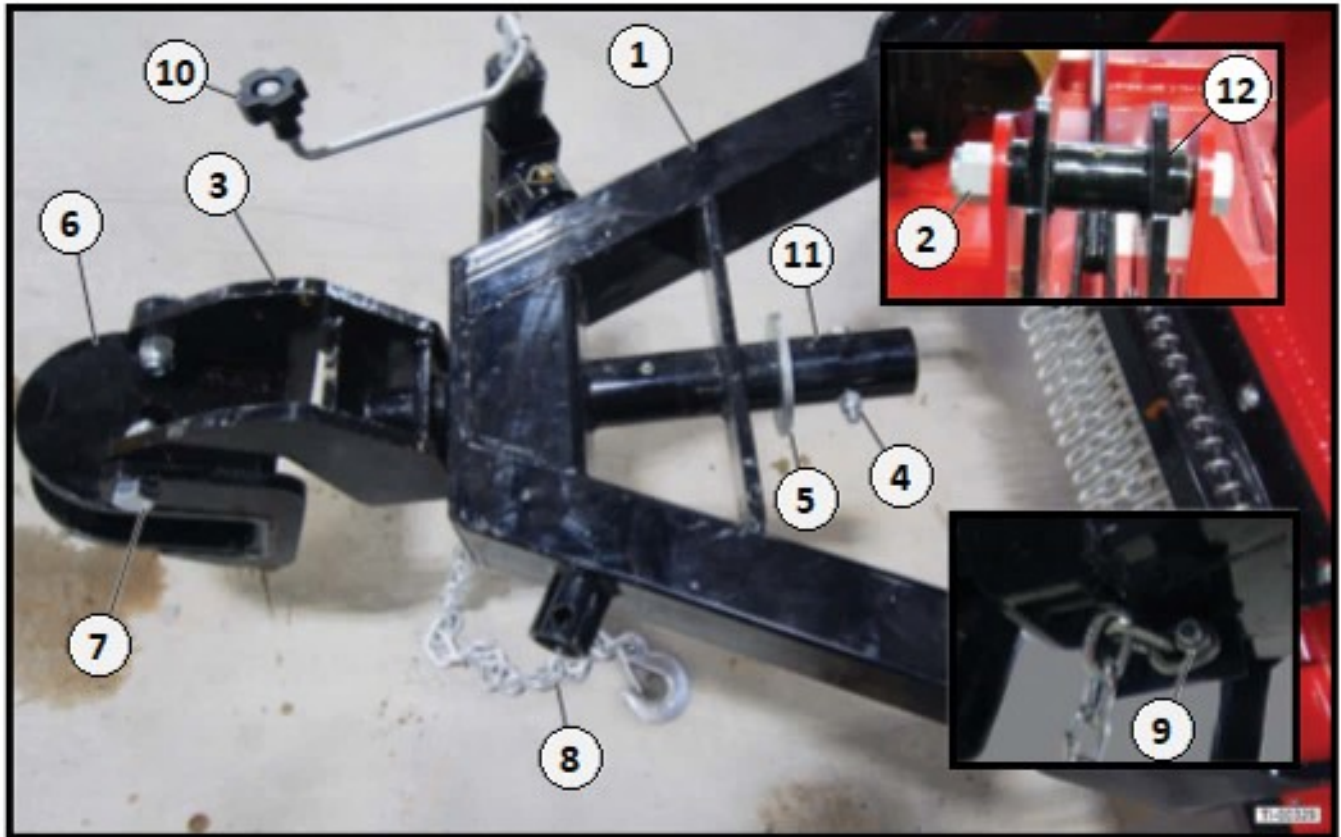
IRONCRAFT

Contact your Authorized Ironcraft Dealer
for all your parts needs



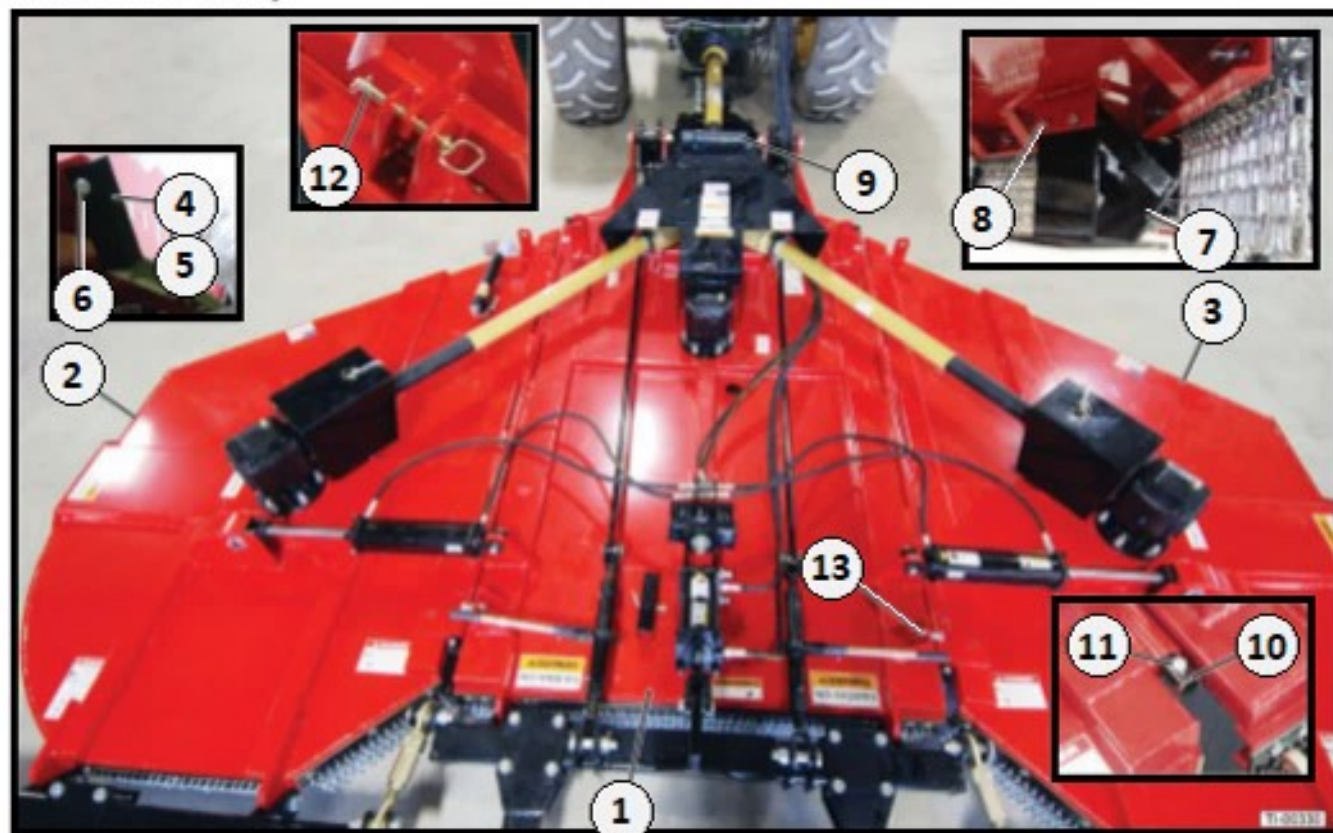
1915 Series 15-ft Flex Wing Cutter Parts Manual

Hitch Assembly

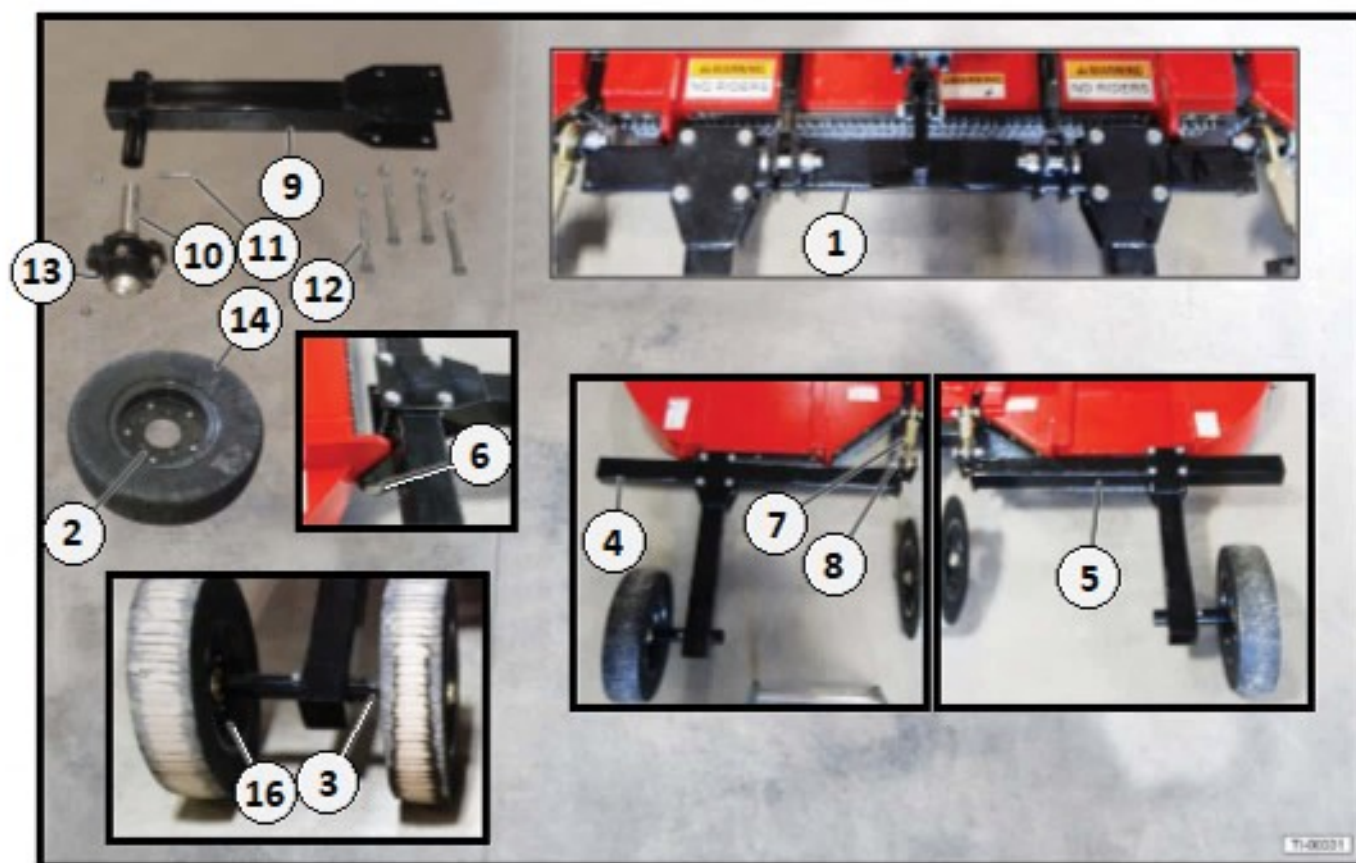


Item	Part #	Description	Qty
1	191520	Hitch Frame	1
2	191521	Bolt & Locknut Kit 1-1/4"x 8-1/2" – for Hitch to Frame	2
3	191524	Receiver Swivel	1
4	180039	Bolt * Locknut Kit 1/2"x 3-1/2" -for Receiver Swivel	1
5	450003	Swivel Washer 2"	1
6	191525	Swivel Head	1
7	150034	Bolt & Locknut Kit 3/4"x 2-1/2" – for Swivel Head	2
8	191526	Safety Chain	1
9	110070	Bolt & Locknut Kit 1/2"x 2-1/2" – for Safety Chain	1
10	191513	Jack	1
11	191522	Tongue Sleeve	1
12	191652	Tongue Pivot Bushing (Not Shown)	2

12.2 Deck Assembly



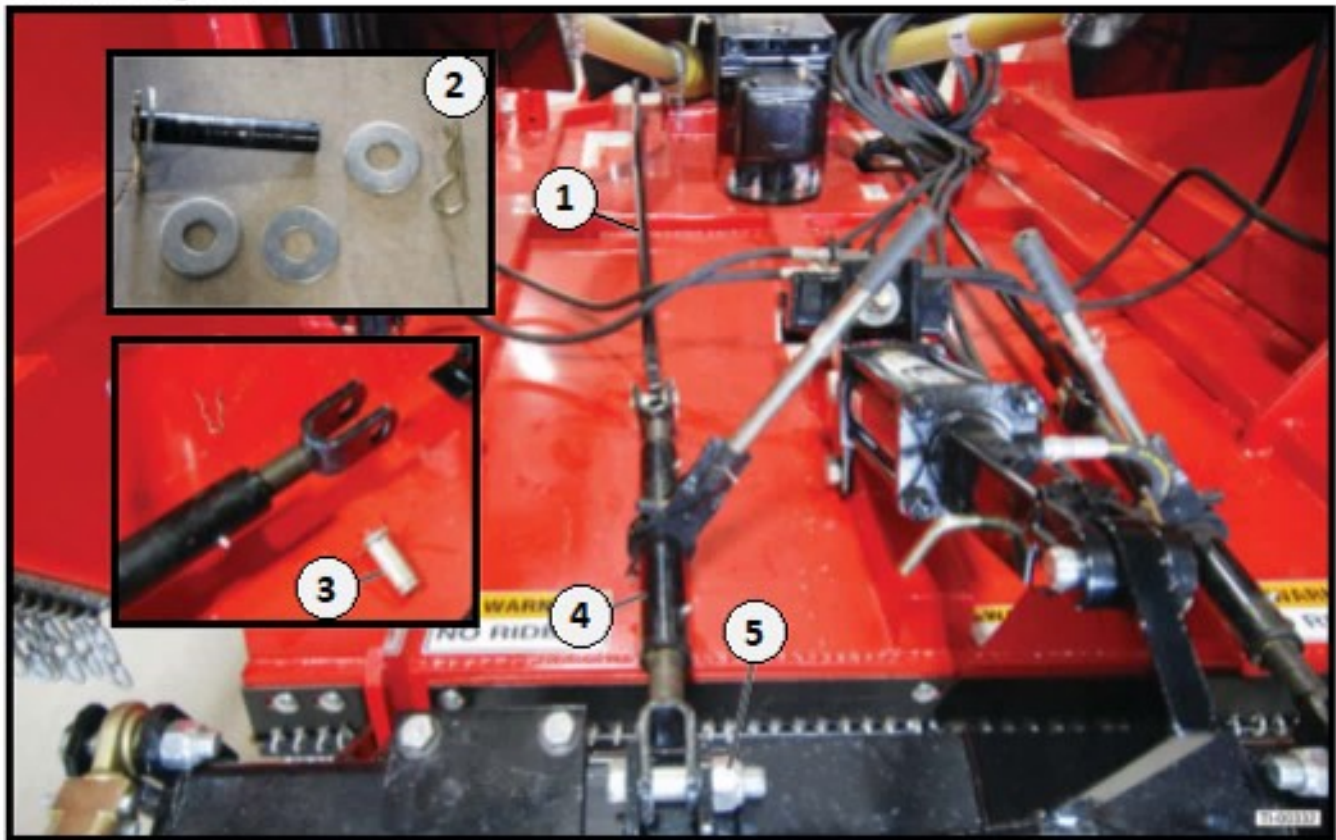
Item	Part #	Description	Qty
1	191570	15-ft Center Deck Only with Decals - BLUE	
	191571	15-ft Center Deck Only with Decals - GREEN	
	191572	15-ft Center Deck Only with Decals - GREY	
	191573	15-ft Center Deck Only with Decals - ORANGE	1
	191574	15-ft Center Deck Only with Decals - RED	
	191575	15-ft Center Deck Only with Decals - YELLOW	
2	191576	15-ft Left Wing Deck Only with Decals - BLUE	1
	191577	15-ft Left Wing Deck Only with Decals - GREEN	
	191578	15-ft Left Wing Deck Only with Decals - GREY	
	191579	15-ft Left Wing Deck Only with Decals - ORANGE	
	191580	15-ft Left Wing Deck Only with Decals - RED	
	191581	15-ft Left Wing Deck Only with Decals - YELLOW	
3	191582	15-ft Right Wing Deck Only with Decals - BLUE	1
	191583	15-ft Right Wing Deck Only with Decals - GREEN	
	191584	15-ft Right Wing Deck Only with Decals - GREY	
	191585	15-ft Right Wing Deck Only with Decals - ORANGE	
	191586	15-ft Right Wing Deck Only with Decals - RED	
	191587	15-ft Right Wing Deck Only with Decals - YELLOW	
4	191544	Skid Shoe - Left Wing	1
5	191545	Skid Shoe - Right Wing	1
6	120011	Carriage Bolt & Locknut Kit 1/2" x 1-1/2" (6-Pack)	3
7	191535	Skid Shoe - Center	2
8	110069	Bolt & Locknut Kit 1/2" x 2"	4
9	110034	Document Holder with Screws	1
10	191536	Connector Rod 1-1/4" x 93-5/8"	2
11	110070	Bolt & Locknut Kit 1/2" x 2-1/2" - for Conn. Rod	2
12	410004	Top Link Pin	2
13	191537	Bolt & Nut Kit 3/4" x 2" - for Wing Stop Adjuster	4



Item	Part #	Description	Qty
1	191546	Center Tailwheel Tube	2
2	---	Rim – (Not Sold Separately)	---
3	191548	Center Tailwheel Dual Hub Shaft	2
4	191549	Left Tailwheel Tube	1
5	191550	Right Tailwheel Tube	1
6	180022	Bolt & Locknut Kit 1"x 3-1/2" – for T/W Tube	16
7	191551	Tailwheel Tube Adjuster	2
8	191552	Bolt & Locknut Kit 1"x 4-1/2" – for T/W Adj.	4
9	180037	Tailwheel Spindle Tube	2
10	180038	Tailwheel Spindle Assembly - Wing	2
11	180039	Bolt & Locknut Kit 1/2"x 3-1/2" – for Spindle	2
12	150047	Bolt & Locknut Kit 3/4"x 6-1/2" – for	8
13	110021	Zerk Fitting	6
14	180040	6"x 9" Laminated Wheel 20"	6
15	191553	*Aircraft Wheel & Tire – 26"	6
	300038	*Aircraft Wheel & Tire – 26" Foam Filled	6
16	191547	Center Tailwheel Hub Assembly (Hub ONLY)	4
*	191548	Center Tailwheel Dual Hub Assembly	4

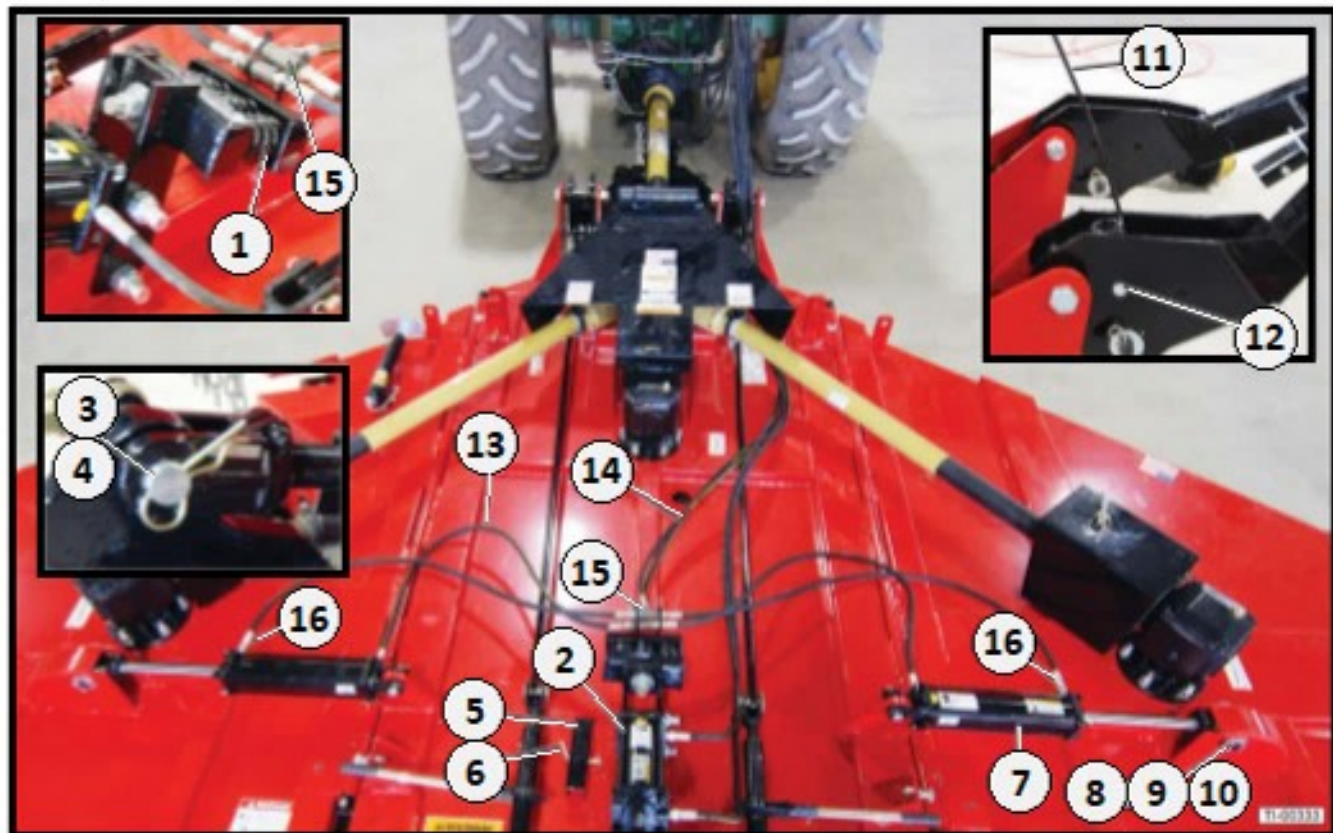
*Not Shown

12.4 Leveling Rods



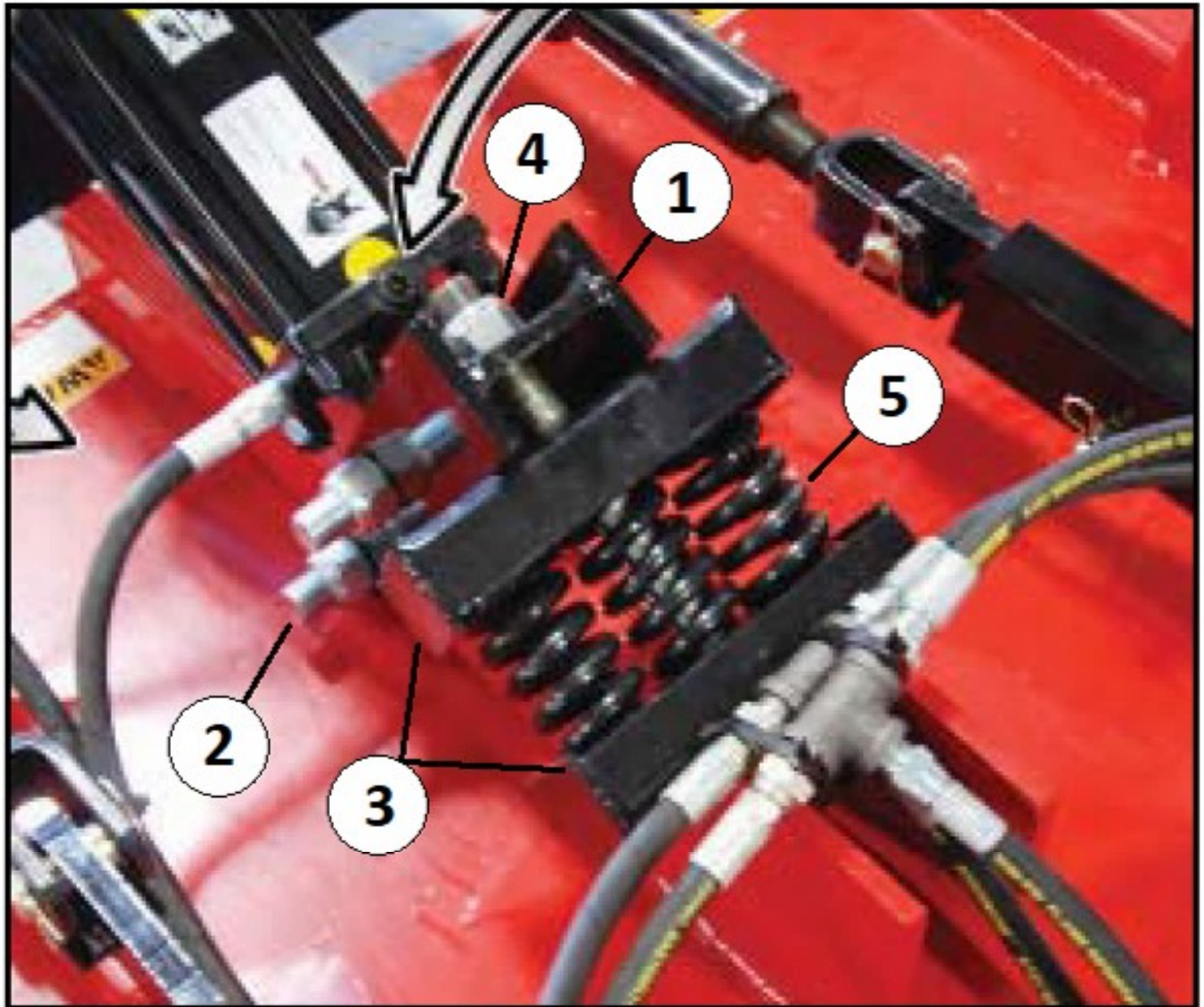
Item	Part #	Description	Qty
1	191532	Leveling Rod 95"	2
2	191533	Pin Kit	2
3	191534	Pin with Clips – for Ratchet Jack	2
4	450005	Ratchet Jack	2
5	920006	Bolt & Locknut Kit 1"x 4-1/2"	2

12.5 Hydraulic System



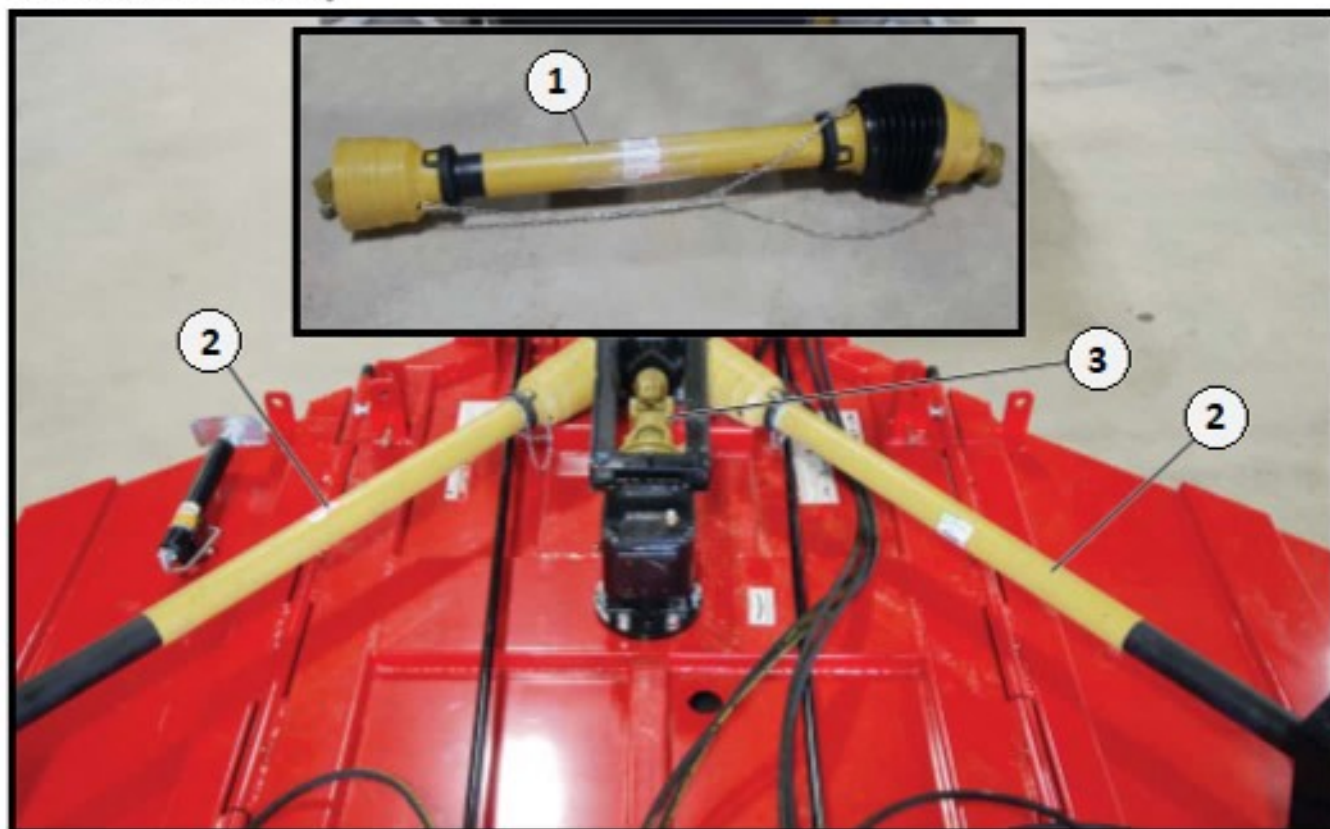
Item	Part #	Description	Qty
1	191527	Spring Assembly	1
2	191528	Hydraulic Lift Cylinder 3-1/2"x 8"	1
3	191529	Pin 3-1/2" – for Lift Cyl.	1
4	191530	Pin Clip – for Cyl. Pin	1
5	191531	Transport Lock Bracket	1
6	310034	L-Pin with Clip – for Transport Lock	1
7	191538	Hydraulic Wing Cylinder 3"x 12"	2
8	191539	Pin 1"x 5" – for Wing Cyl.	2
9	410002	Washer 1" – for Wing Cyl.	4
10	191540	Cotter Pin – for Wing Cyl. Pin	4
11	191209	Hydraulic Hose Support Spring	1
12	110015	Bolt & Locknut Kit 5/8"x 2" – for Hose Support	1
13	191541	Hydraulic Hose 60"	4
14	191542	Hydraulic Hose 228"	4
15	191238	Hyd. Tee 1/2"	2
16	191590	Flow Restrictor 1/2"	2

Spring Cushion Assembly



Item	Part #	Description	Qty
1	191558	SPRING/CYLINDER HOLDER BRACKET	1
2	191559	BRACKET BOLT KIT 1" X 6" W/WASHER & NUT	2
3	191556	SPRING HOLDER CUP	2
4	191557	SPRING BOLT KIT 1" X 12" W/WASHER & NUT	1
5	191555	SPRING .500" X 2.5" X 8.0"- LONG	3
	191527	COMPLETE SPRING ASSEMBLY	

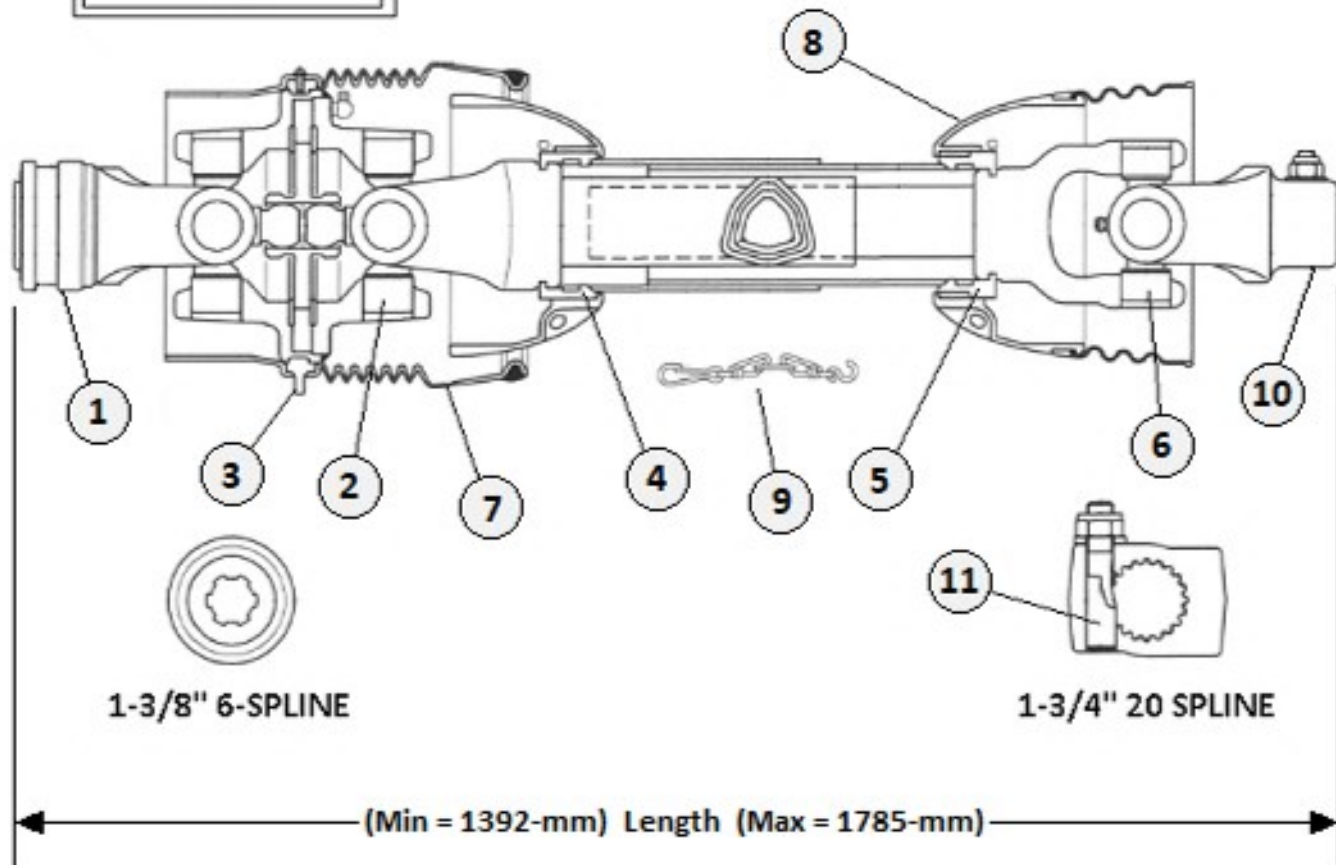
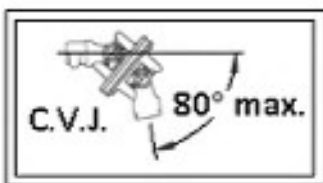
12.6 Driveline Assembly



Item	Part #	Description	Qty
1	191560	C.V. Driveline – 540 RPM	1
	191563	C.V. Driveline – 1000 RPM	
2	191561	Driveline – LH & RH Wing	2
3	191506	Splitter Cross Shaft	1

540-RPM C.V. Driveline Assembly

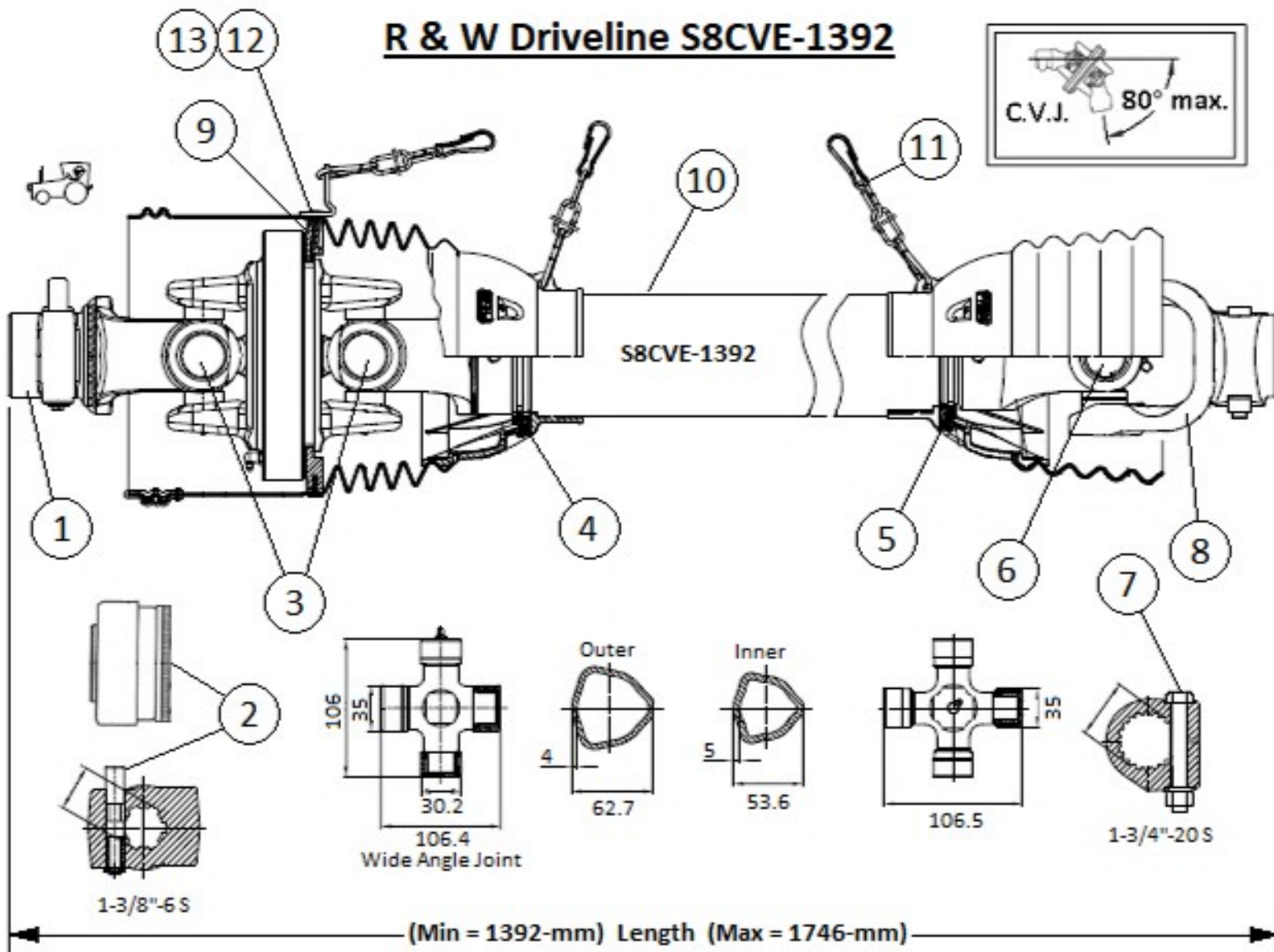
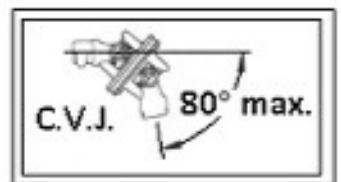
note: This is a Comer Driveline



Item	Part No.	Description	Qty
1	552201	PULL COLLAR KIT (for Tractor Yoke)	1
2	552202	CV CROSS KIT 35 X 113.8	2
3	552203	FIXED RING for C.V. Shield	1
4	552204	OUTER PLASTIC SHIELD BEARING	1
5	552205	INNER PLASTIC SHIELD BEARING	1
6	552206	CROSS KIT 35 X 106.5	1
7	552207	SAFETY SHIELD FOR C.V.	1
8	552208	COMPLETE SAFETY SHIELD	1
9	552209	SAFETY CHAIN	3
10	552210	GEARBOX YOKE 1-3/4"-20	1
11	552211	TAPERED PIN KIT	1

191560 - COMPLETE DRIVELINE

R & W Driveline S8CVE-1392



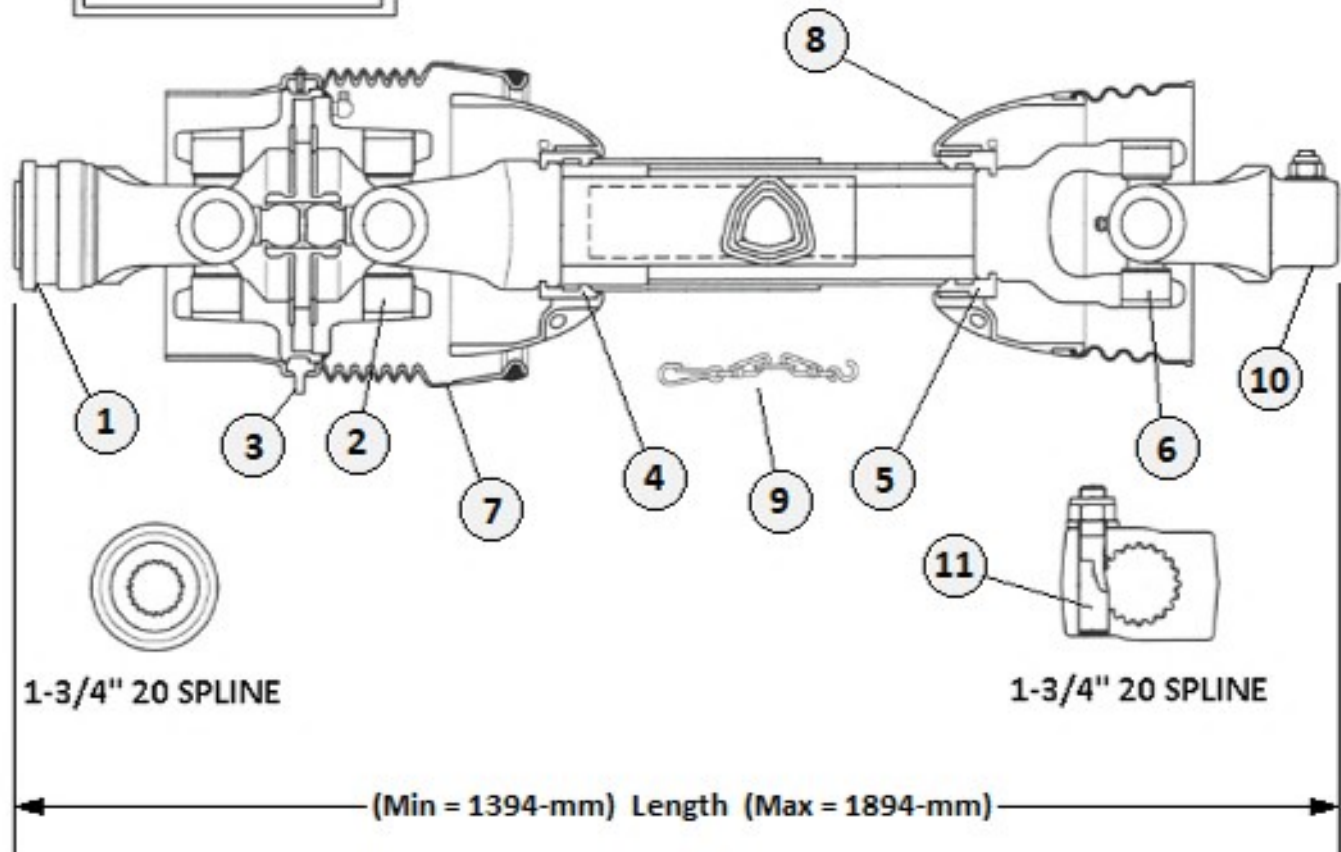
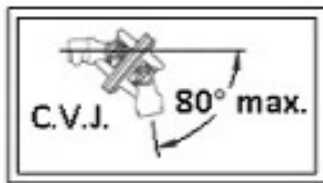
Item	Part #	Description	Qty
1	552156	TRACTOR YOKE W/PUSH PIN – 1-3/8" 6-S	1
2	552157	PUSH PIN KIT	1
	552091	PULL COLLAR KIT (Note: Used on Earlier Models)	A/R
3	552158	CROSS KIT 30.2/106 - 35/106.4	2
4	552159	OUTER PLASTIC SHIELD BEARING	1
5	552160	INNER PLASTIC SHIELD BEARING	1
6	552161	CROSS KIT 35/106.5	1
7	552162	BOLT W/NUT & LOCKWASHER M16 X 90	1
8	552163	GEARBOX YOKE 1-3/4" 20-S	1
9	552164	C.V. SHIELD BEARING	1
10	552165	COMPLETE SHIELD	1
11	552166	SAFETY CHAIN	3
12	552167	CLIP FOR SAFETY CHAIN	1
13	552158	SELF TAPPING SCREW M8 X 16	1

A/R = As Required

191560 - Complete Driveline (540-RPM)

1000-RPM C.V. Driveline Assembly

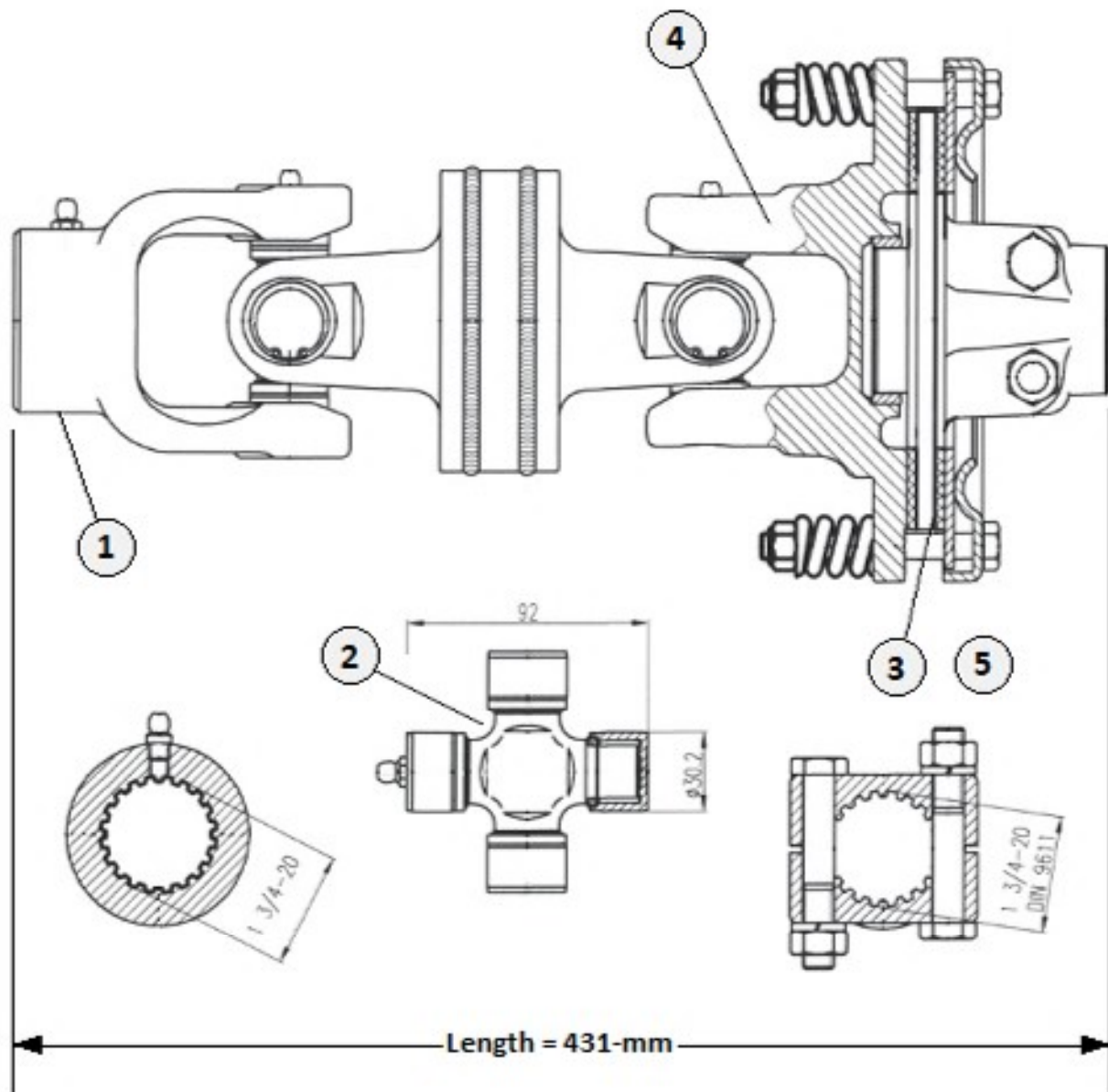
note: this is a Comer driveline



Item	Part No.	Description	Qty
1	552214	PULL COLLAR KIT (for Tractor Yoke)	1
2	552202	CV CROSS KIT 35 X 113.8	2
3	552203	FIXED RING for C.V. Shield	1
4	552204	OUTER PLASTIC SHIELD BEARING	1
5	552205	INNER PLASTIC SHIELD BEARING	1
6	552206	CROSS KIT 35 X 106.5	1
7	552207	SAFETY SHIELD FOR C.V.	1
8	552208	COMPLETE SAFETY SHIELD	1
9	552209	SAFETY CHAIN	3
10	552210	GEARBOX YOKE 1-3/4"-20	1
11	552211	TAPERED PIN KIT	1

191563 - COMPLETE DRIVELINE

Center Deck Driveline Assembly



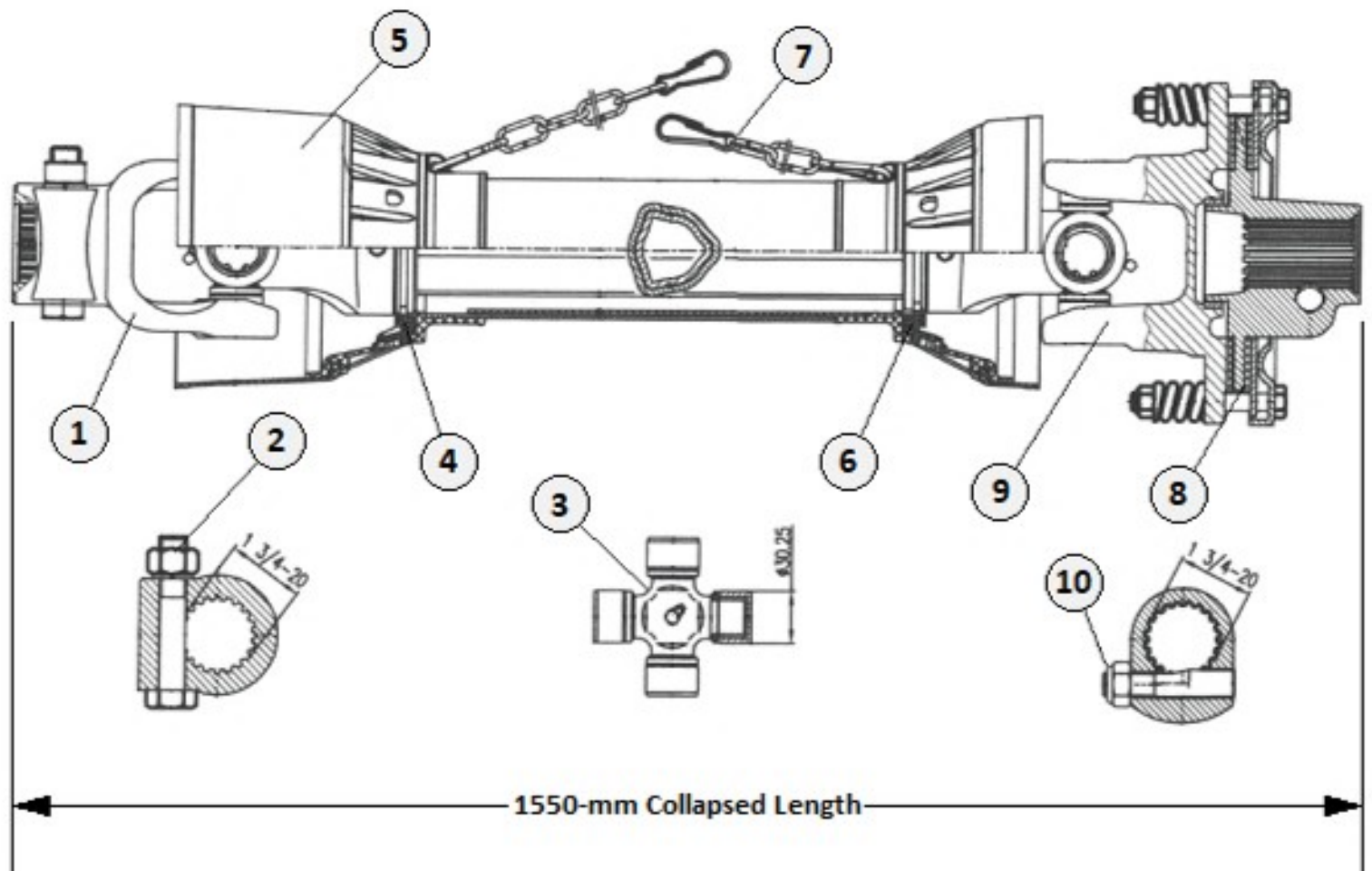
191506 - COMPLETE DRIVELINE

Item	Part No.	Description	Qty
1	552100	GEARBOX YOKE 1-3/4"-20	1
2	552101	CROSS KIT 30.2 X 92	2
3	552102	CLUTCH LINING (2-Pack)	1
4	552103	COMPLETE SLIPCLUTCH 1-3/4"-20	1
5	552104	CLAMP BOLT	1

Note:

COMER Industries old style connector shaft #191560 15-ft Ctr Conn. used the below lining				
552200	Clutch Lining 80.019.340	6.00"	3.50"	.125"

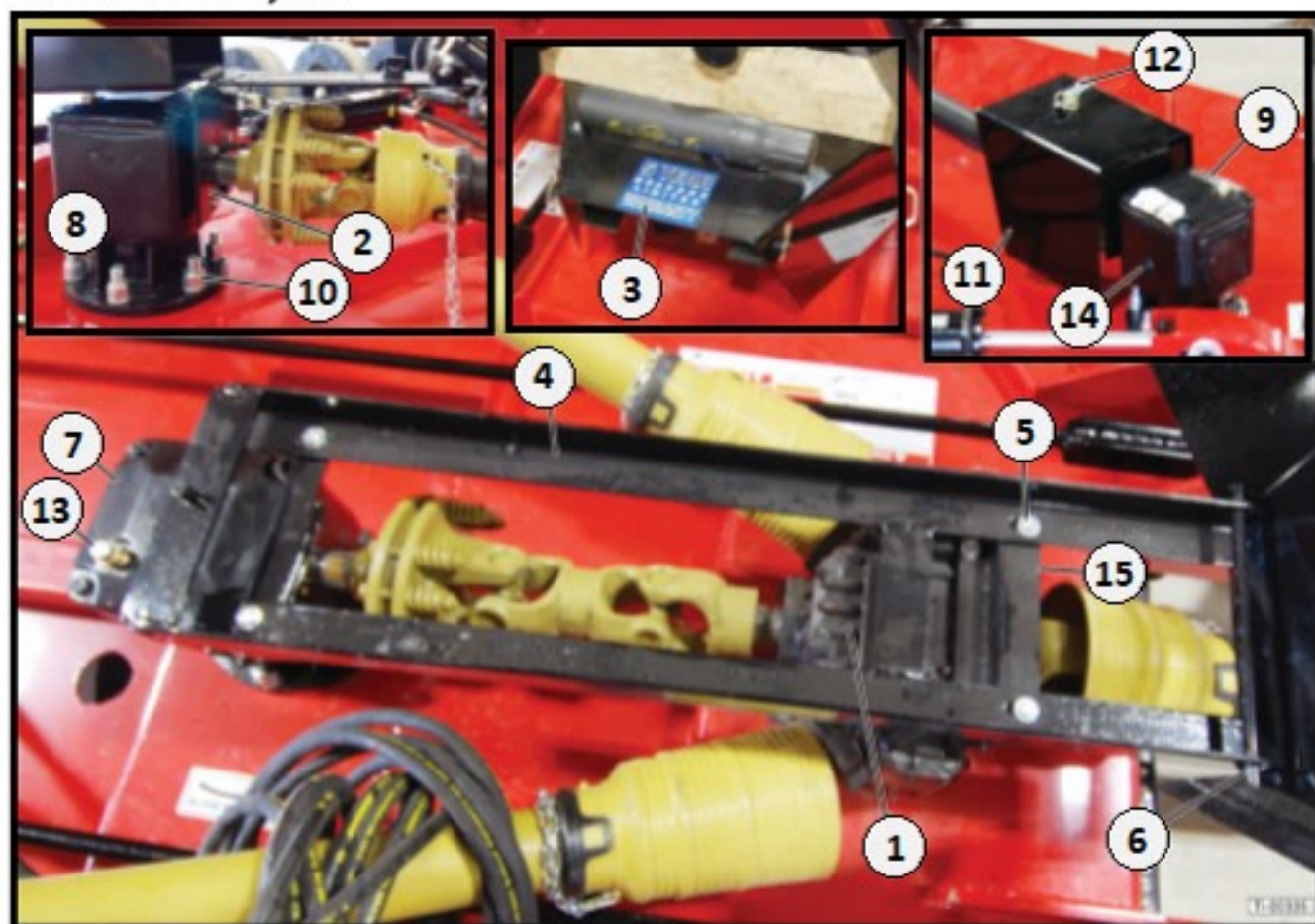
Wing Driveline Assembly



Item	Part No.	Description	Qty
1	552110	YOKE 1-3/4"	1
2	552111	LOCK BOLT KIT	1
3	552112	CROSS KIT 30.2 X 92	2
4	552113	OUTER PLASTIC SHIELD BEARING	1
5	552114	COMPLETE SAFETY SHIELD	1
6	552115	INNER PLASTIC SHIELD BEARING	1
7	552005	SAFETY CHAIN	2
8	552116	CLUTCH LINING (2-Pack)	1
9	552117	COMPLETE SLIPCLUTCH	1
10	552118	LOCK BOLT KIT	1

191561 - COMPLETE DRIVELINE

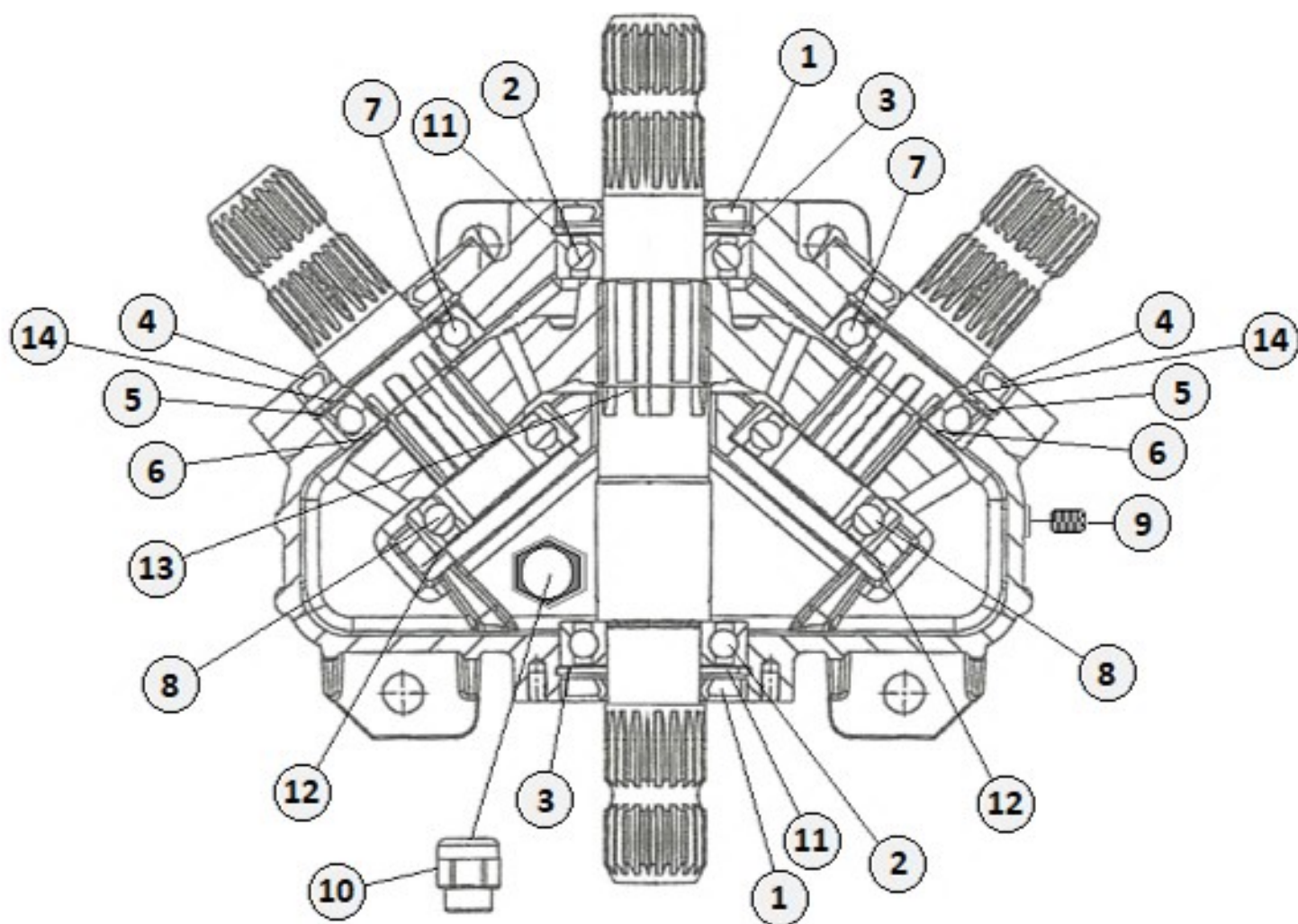
12.7 Cutter Drive System



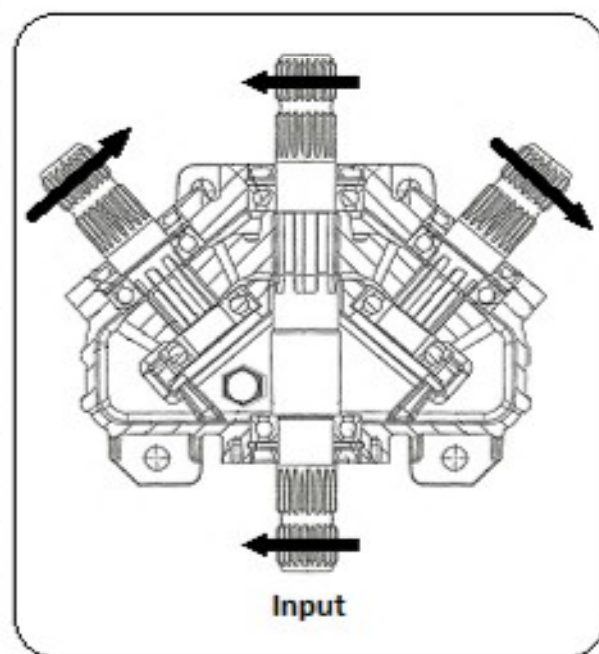
Item	Part #	Description	Qty
1	191501	Gearbox – Splitter 540 RPM	1
	191502	Gearbox – Splitter 1000 RPM	1
2	110015	*Bolt, Lockwasher & Locknut Kit 5/8" x 2" (4-Pack)	1
3	191503	Shield – for Splitter G/Box	1
4	191504	Shield Frame – for Splitter G/Box	1
5	510008	Bolt Kit 3/8" x 1-1/4" – for Splitter G/Box Shield Frame	4
6	191505	Pivot Rod 1/2" x 13" with Pins – For Splitter G/Box Shield	1
7	191508	Gearbox – Center Outboard 540 RPM	1
	191509	Gearbox – Center Outboard 1000 RPM	1
8	191510	Gearbox – Left Outboard 540 RPM	1
9	191512	Gearbox – Right Outboard 540 RPM	1
10	191514	Bolt Lockwasher & Locknut Kit 3/4" x 3"	12
11	150076	Outboard Gearbox Shield – Plastic (Replaces Metal Shield)	2
12	310032	Lynch Pin 3/8" (for Old Style Metal Shield Only)	2
13	551109	Gearbox Vent Plug 1/2"	3
14	551093	Gearbox Drain Plug 3/8"	3
15	191511	Shield Frame Cross Member	1

*Not Shown

540-RPM / 1000-RPM SPLITTER GEARBOX COMPONENTS



Item	Part #	Description	Qty
1	551060	Input Seal 45 x 85 x 10	2
2	551061	Input Bearing 6209 – Thru Shaft	2
3	551062	Snap Ring 85 x 88.5 x 3	2
4	551063	Output Seal 45 x 80 x 10	2
5	551064	Snap Ring 80 x 83.5 x 2.5	2
6	551065	Snap Ring 40 x 37.5 x 2.5	2
7	551066	Bearing 6208	2
8	551067	Bearing 6307	2
9	551068	Check Plug 3/8"	2
10	551069	Breather Plug 1/2"	1
11	551070	Shim Kit 70.3 x 84.7	2
12	551071	Shim Kit 69.0 x 79.9	2
13	551073	Snap Ring 47 x 45.5 x 1.5	1
14	551072	Shim Kit 65.3 x 79.7	2

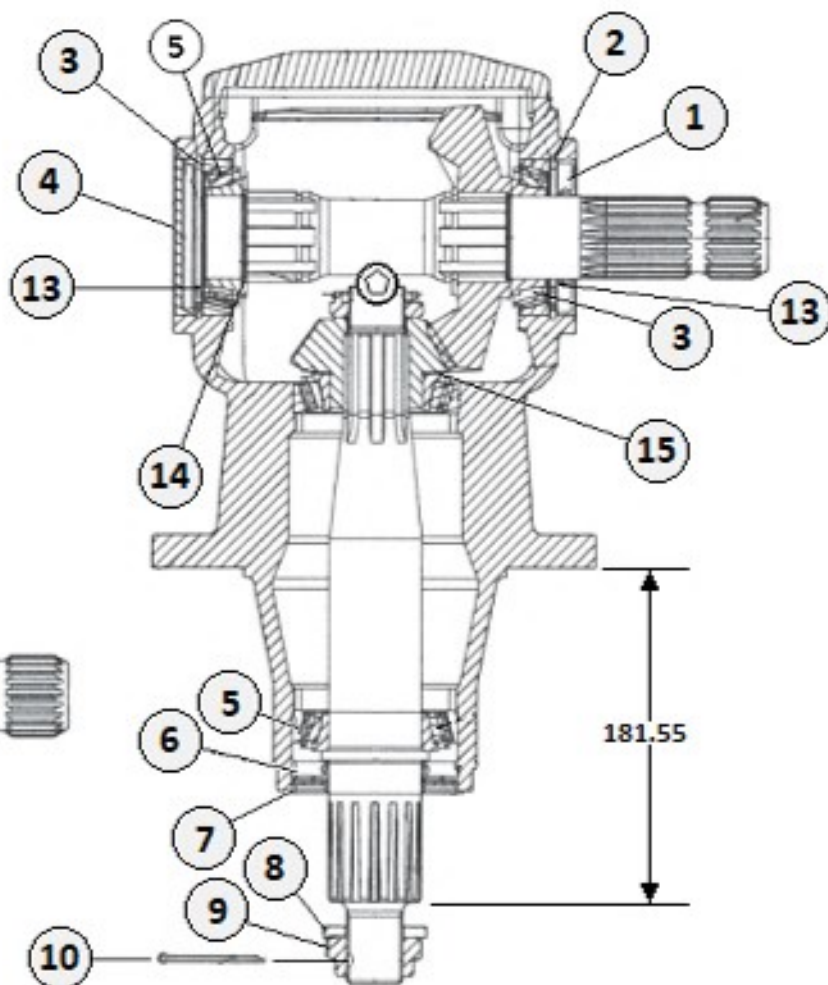
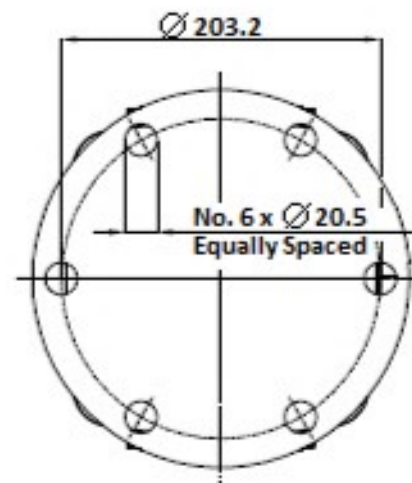
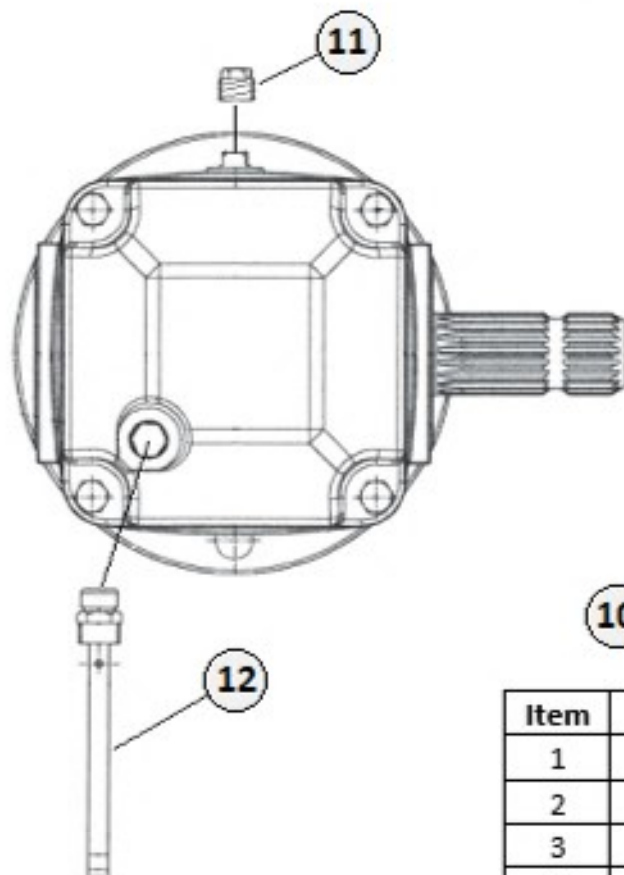


191501 - COMPLETE GEARBOX 540-RPM
191502 - COMPLETE GEARBOX 1000-RPM

140 (ISO 460) Gearoil Recommended
Fill level 61-oz. (1.83-qt)

COMER - OUTBOARD GEARBOX

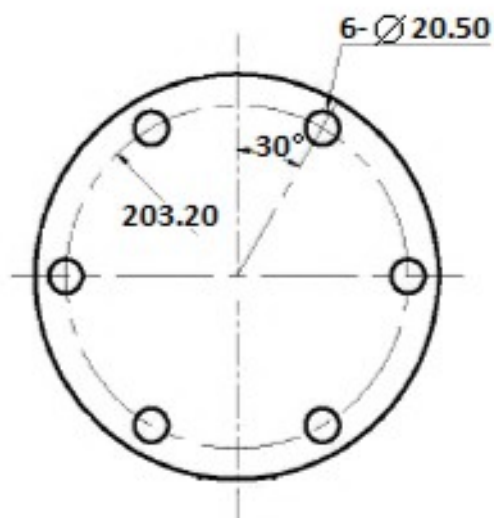
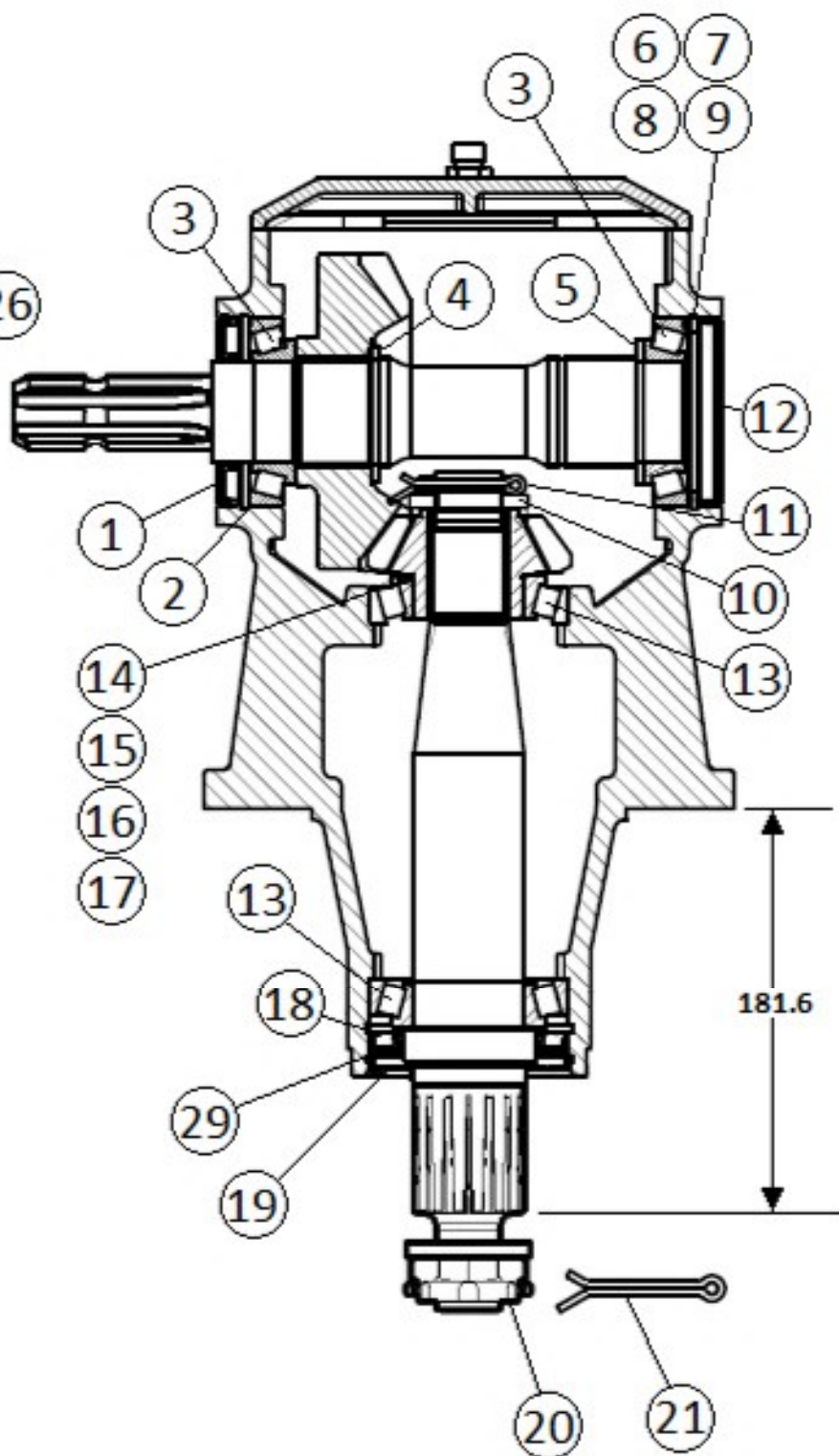
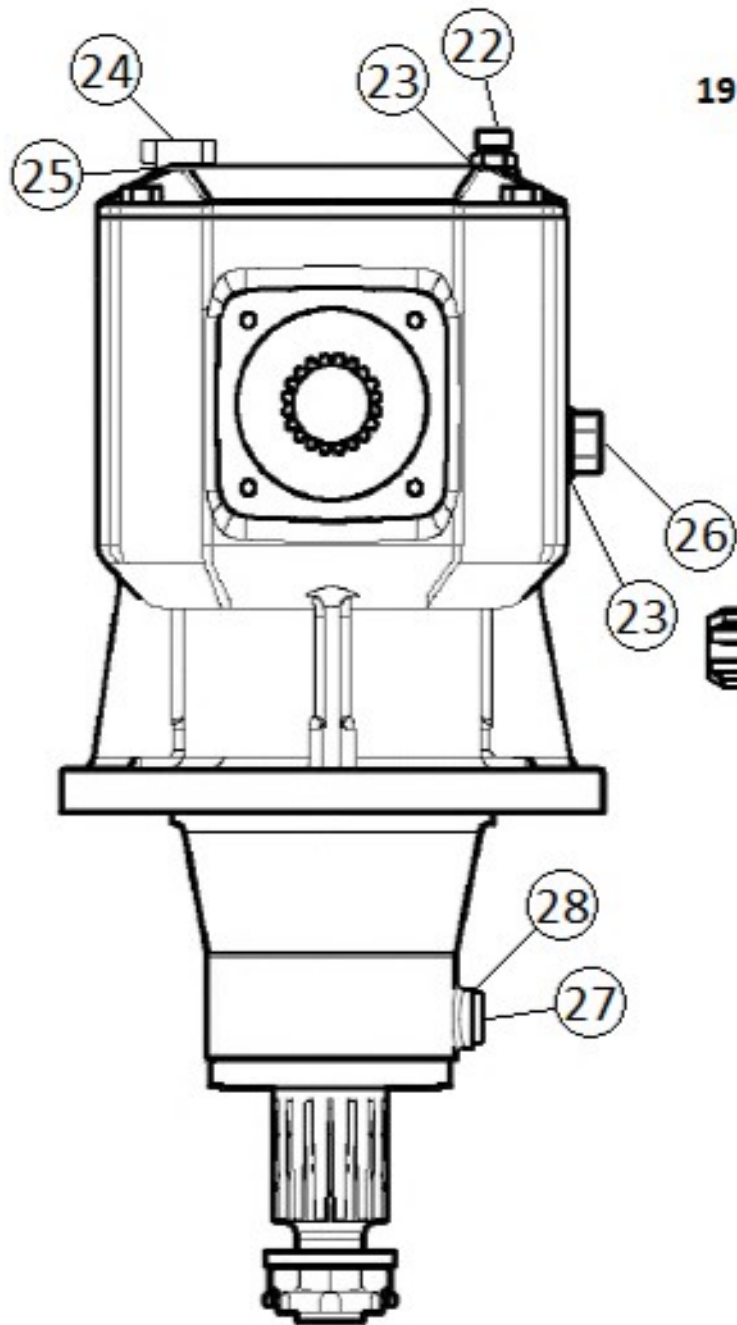
140 (ISO 460) Gearoil Recommended
86-oz. (2.58-qt)



Item	Part #	Description	Qty
1	551100	Input Seal 45 x 85 10	1
2	551062	Snap Ring 85 x 88.5 x 3	2
3	551101	Bearing 30209	2
4	551102	Oil Cap 85 x 10	1
5	551103	Bearing 30210	2
6	551104	Output Seal 50 x 90 x 10	1
7	551105	Protective Washer	1
8	551106	Flatwasher 31 x 56 x 6	1
9	551107	Castle Nut M30 x 2	1
10	551108	Cotter Pin M6 x 60	1
11	551093	Check Plug 3/8"	1
12	551109	Breather Plug 1/2"	1
13	551110	Shim Kit 70.3 x 84.7	2
14	551111	Shim 45.3 x 65.3 x 2.5	1
15	551112	Shim Kit 50.3 x 70.3	1

#191508 - Center Deck 540-RPM (9.227.818.00)
 #191509 - Center Deck 1000-RPM (9.227.813.00)
 #191510 - LH Wing 540/1000-RPM (9.227.811.10)
 #191512 - RH Wing 540/1000-RPM (9.227.816.10)

191308 Center Gearbox 540-RPM (RG75-A)

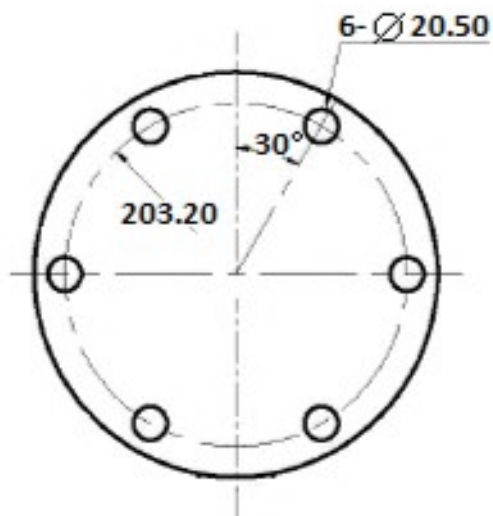
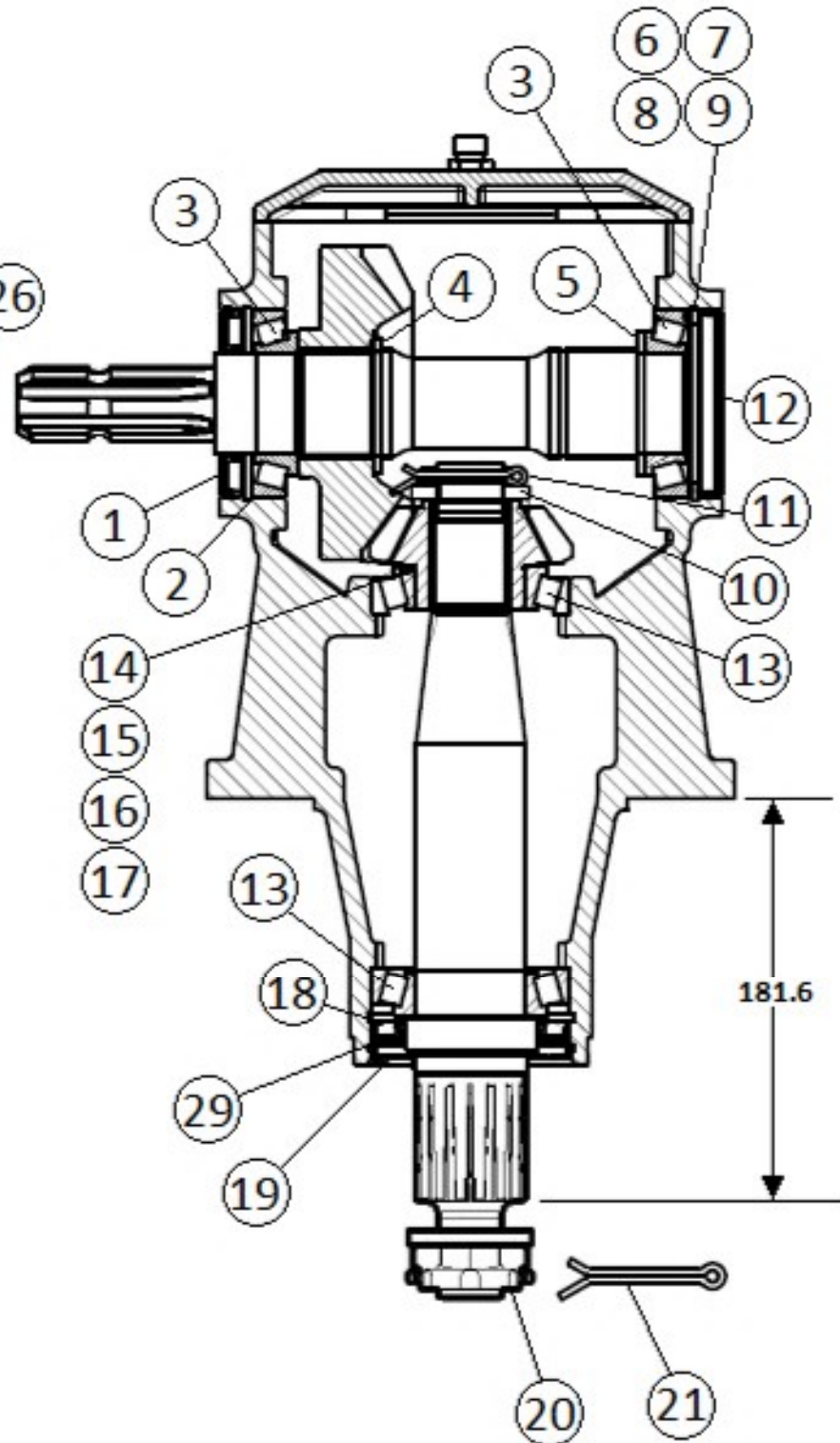
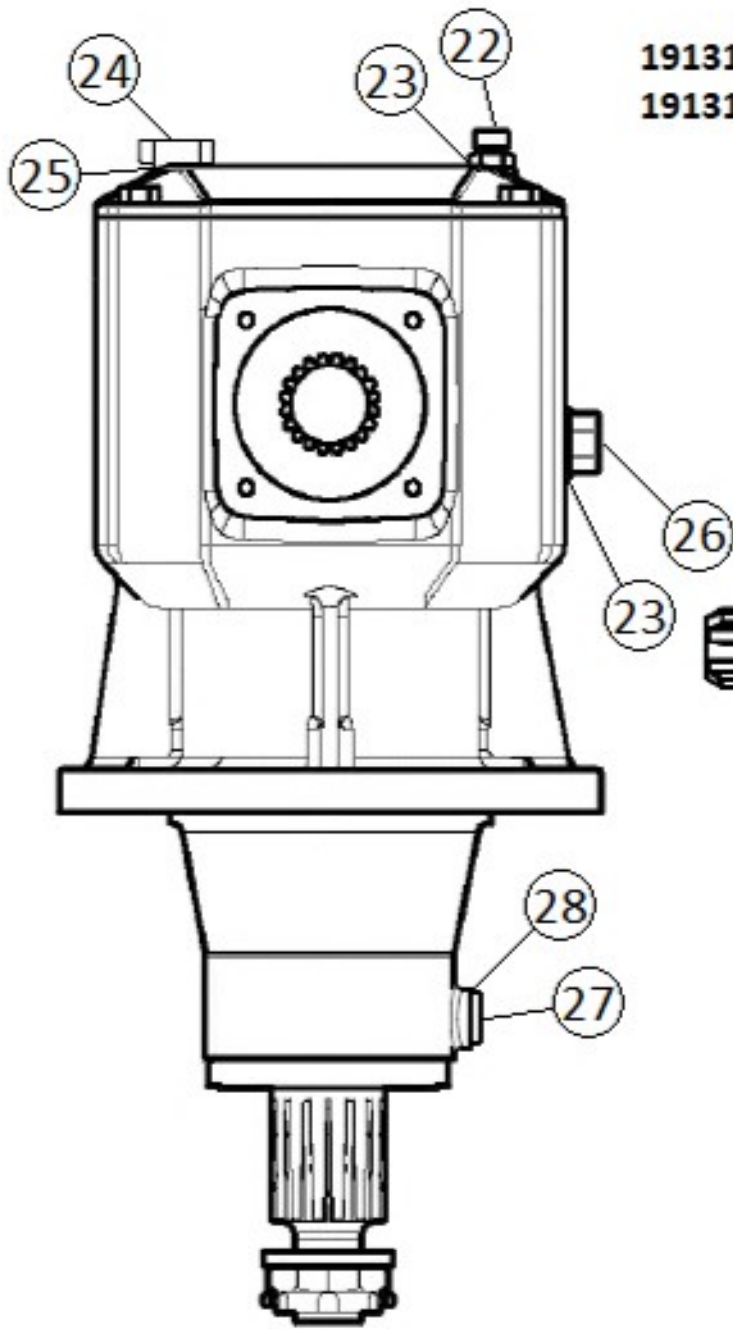


140 (ISO 460) Gearoil Recommended
116-oz. (3.48-qt)

191308 Center Gearbox 540-RPM (RG75-A)

Item	Part #	Description	Qty
1	191350	DOUBLE LIP SEAL 45 X 85 X 10	1
2	191351	SNAP RING 85 X 3	2
3	191352	TAPERED ROLLER BEARING 30209	2
4	191353	SNAP RING 50 X 3	1
5	191354	FLAT WASHER 45.3 X 65 X 2.5	1
6	191355	ADJUSTING SHIM 84.5 X 73 X 0.3	4
7	191356	ADJUSTING SHIM 84.5 X 73 X 0.4	4
8	191357	ADJUSTING SHIM 84.5 X 73 X 0.5	2
9	191358	ADJUSTING SHIM 84.5 X 73 X 1	2
10	191359	CASTLE NUT M30 X 1.5	1
11	191360	COTTER PIN 5 X 63	1
12	191361	OIL CAP PLUG 85 X 10	1
13	191362	TAPERED ROLLER BEARING 30210	2
14	191363	ADJUSTING WASHER 50.2 X 61.8 X 0.3	4
15	191364	ADJUSTING WASHER 50.2 X 61.8 X 0.4	4
16	191365	ADJUSTING WASHER 50.2 X 61.8 X 0.5	1
17	191366	ADJUSTING WASHER 50.2 X 61.8 X 1	1
18	191367	SNAP RING 90 X 3	2
19	191368	DUST CAP	1
20	191369	CASTLE NUT M30 X 2	1
21	191370	COTTER PIN 6.3 X 63	1
22	191371	VENT PLUG M16 X 1.5	1
23	191372	PLUG WASHER 16.2 X 19.9 X 1.5	2
24	191373	OIL LEVELER	1
25	191374	OIL LEVELER WASHER	1
26	191375	OIL PLUG M16 X 1.5	1
27	191376	SOLID PLUG – CS HEX 9/16"	1
28	191377	O-RING 11.2 X 2	1
29	191379	DOUBLE LIP SEAL 60 X 90 X 10	1

191310 LH Wing Gearbox 540/1000-RPM (RG100-O)
191312 RH Wing Gearbox 540/1000-RPM (RG100-A)

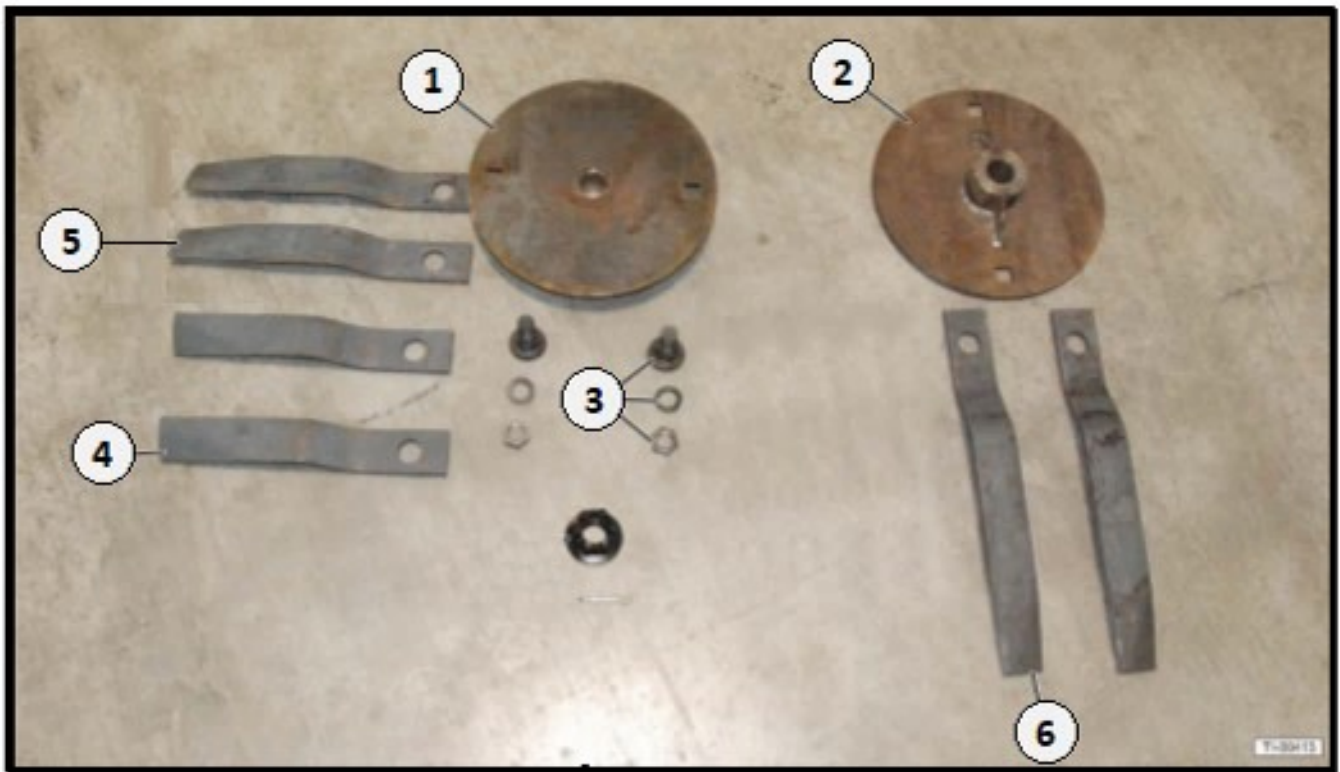


140 (ISO 460) Gearoil Recommended
116-oz. (3.48-qt)

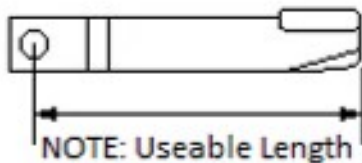
191310 LH Wing Gearbox 540/1000-RPM (RG100-O)

191312 RH Wing Gearbox 540/1000-RPM (RG100-A)

Item	Part #	Description	Qty
1	191350	DOUBLE LIP SEAL 45 X 85 X 10	1
2	191351	SNAP RING 85 X 3	2
3	191352	TAPERED ROLLER BEARING 30209	2
4	191353	SNAP RING 50 X 3	1
5	191354	FLAT WASHER 45.3 X 65 X 2.5	1
6	191355	ADJUSTING SHIM 84.5 X 73 X 0.3	4
7	191356	ADJUSTING SHIM 84.5 X 73 X 0.4	4
8	191357	ADJUSTING SHIM 84.5 X 73 X 0.5	2
9	191358	ADJUSTING SHIM 84.5 X 73 X 1	2
10	191359	CASTLE NUT M30 X 1.5	1
11	191360	COTTER PIN 5 X 63	1
12	191361	OIL CAP PLUG 85 X 10	1
13	191362	TAPERED ROLLER BEARING 30210	2
14	191363	ADJUSTING WASHER 50.2 X 61.8 X 0.3	4
15	191364	ADJUSTING WASHER 50.2 X 61.8 X 0.4	4
16	191365	ADJUSTING WASHER 50.2 X 61.8 X 0.5	1
17	191366	ADJUSTING WASHER 50.2 X 61.8 X 1	1
18	191367	SNAP RING 90 X 3	2
19	191368	DUST CAP	1
20	191369	CASTLE NUT M30 X 2	1
21	191370	COTTER PIN 6.3 X 63	1
22	191371	VENT PLUG M16 X 1.5	1
23	191372	PLUG WASHER 16.2 X 19.9 X 1.5	2
24	191373	OIL LEVELER	1
25	191374	OIL LEVELER WASHER	1
26	191375	OIL PLUG M16 X 1.5	1
27	191376	SOLID PLUG – CS HEX 9/16"	1
28	191377	O-RING 11.2 X 2	1
29	191379	DOUBLE LIP SEAL 60 X 90 X 10	1

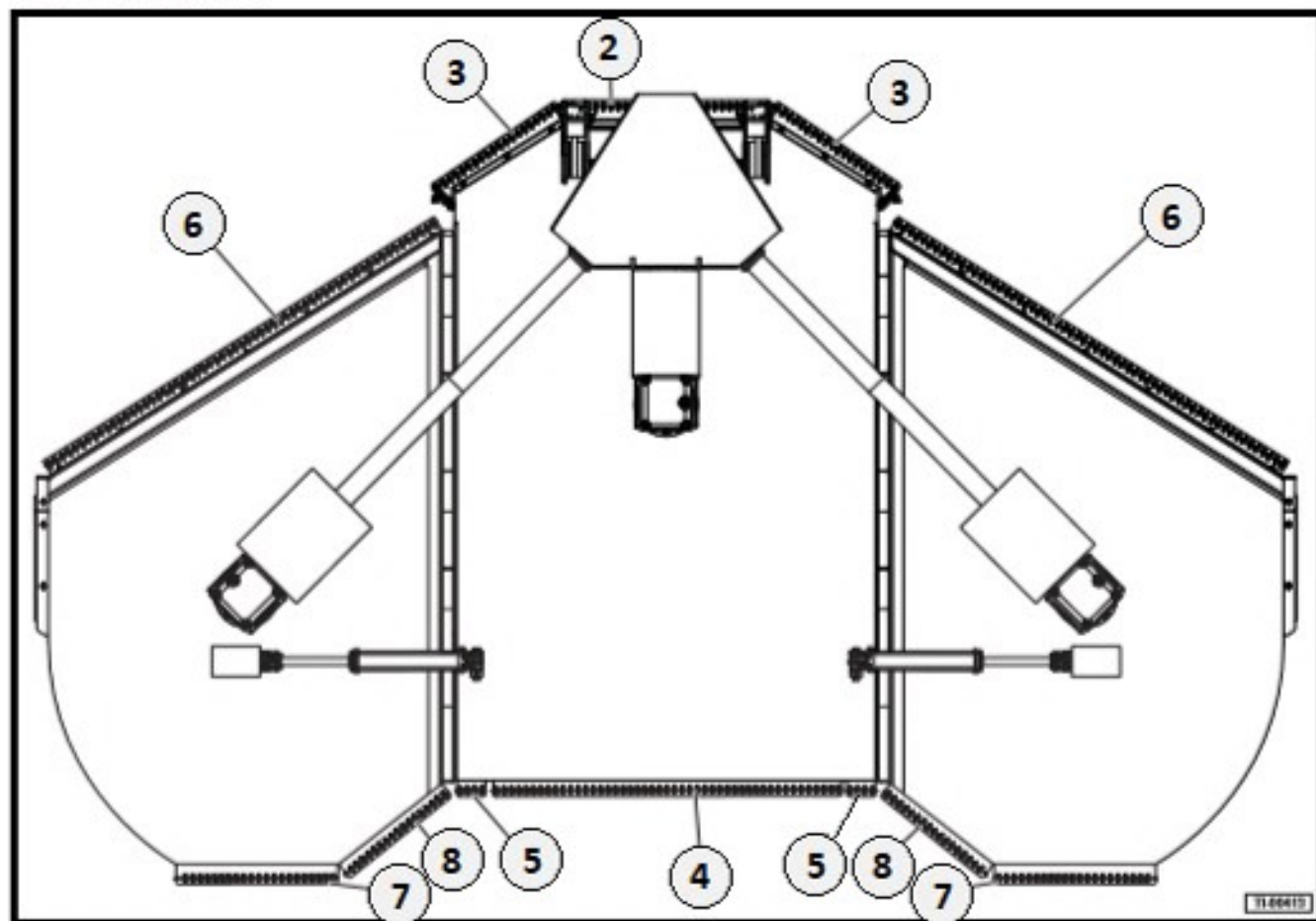


Item	Part #	Description	Qty
1	191517	Blade Carrier – Center 3/4" x 29" (Flat Type) (Bolt holes 21.50" Ctr to Ctr)	1
2	191518	Blade Carrier – Wing 3/4" x 23" (Flat Type) (Bolt holes 15.50" Ctr to Ctr)	2
3	110012	Blade Bolt, Lockwasher & Nut Kit (2-Pack)	3
4	C-15	Cutter Blades – Center (Sold in Pairs) Useable Length 25-1/4"	1
5	LW-15	Cutter Blades – LH Wing (Sold in Pairs) Useable Length 22-1/4"	1
6	RW-15	Cutter Blades – RH Wing (Sold in Pairs) Useable Length 22-1/4"	1



NOTE: Uses 1-11/16" Socket size for Blade Bolt Nut

12.9 Chain Shields



Item	Part #	Description	Qty
---	CG-1915	Complete Chain Shield Kit (Includes Items 2,3,4,5,6,7,8,9)	1
2	CG-19151	Chain Shield – Front Center Deck	1
3	CG-19152	Chain Shield – LH & RH Front Center Deck	2
4	CG-19153	Chain Shield – Rear Center Deck	1
5	CG-19154	Chain Shield – LH & RH Rear Center Deck	2
6	CG-19155	Chain Shield – LH & RH Front Wing Deck	2
7	CG-19156	Chain Shield – Rear Wing Deck	2
8	CG-19157	Chain Shield – LH & RH Inside Rear Wing Deck	2
9	191253	*Bolt & Nut Kit – for Shields (10-Pack)	A/R

A/R = As Required