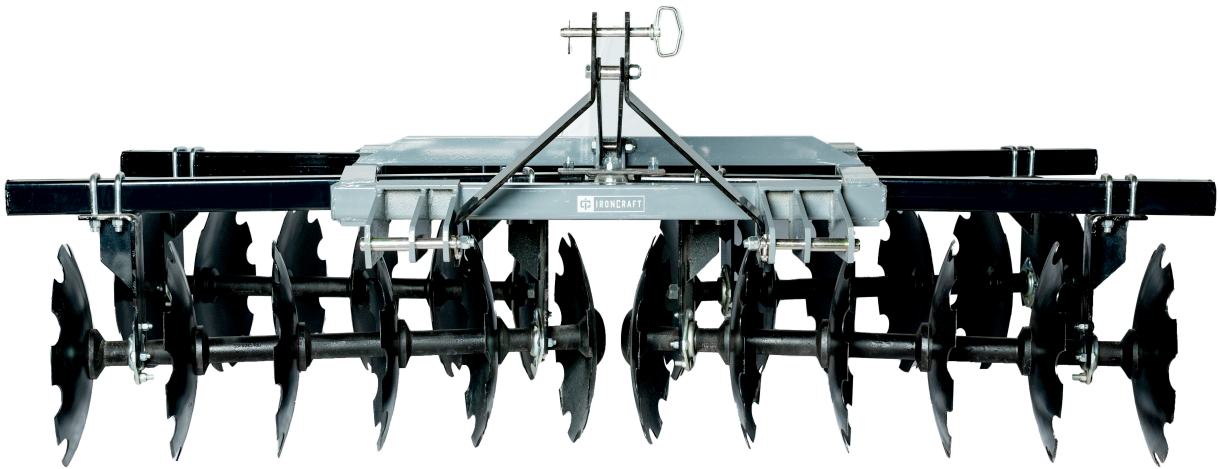


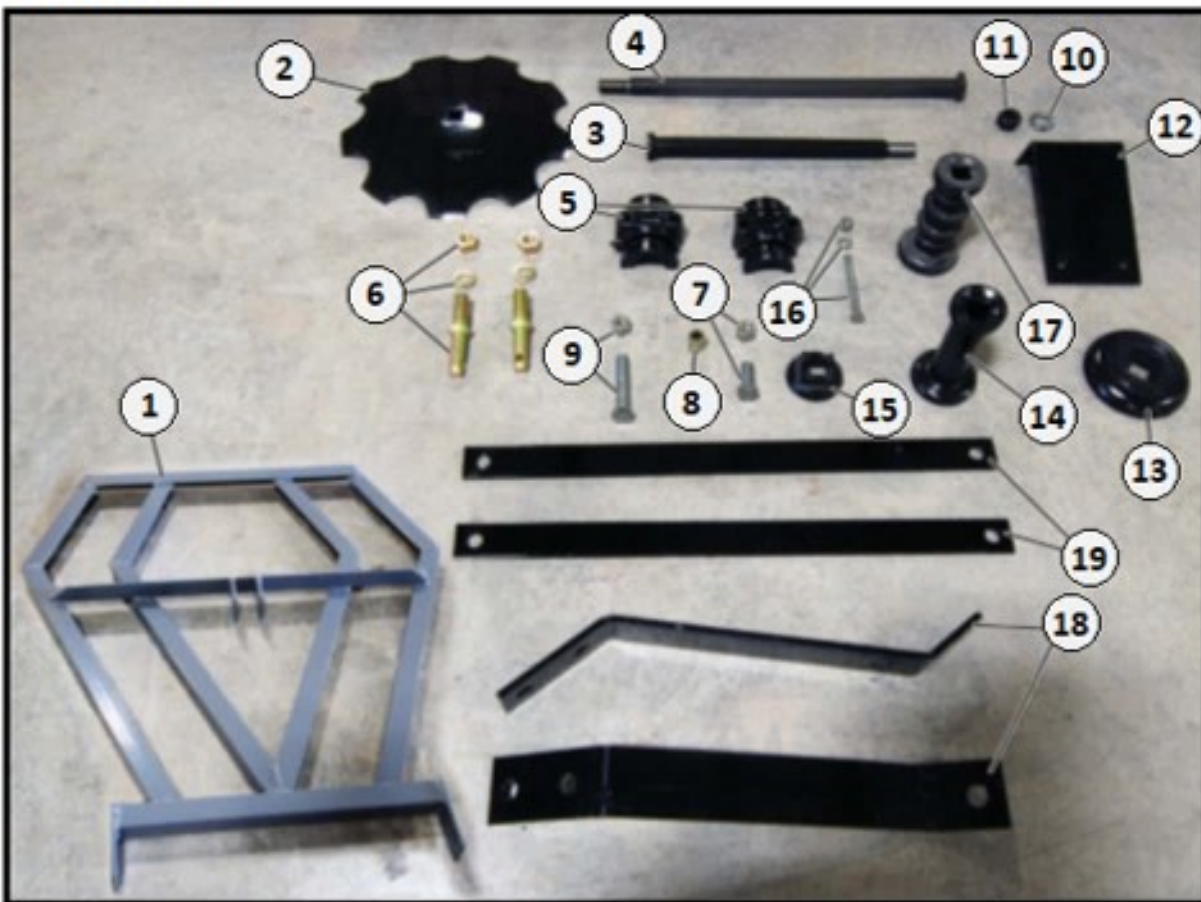


Contact your Authorized Ironcraft Dealer
for all your parts needs



7100/7300/7400 SERIES DISC HARROW PARTS MANUAL

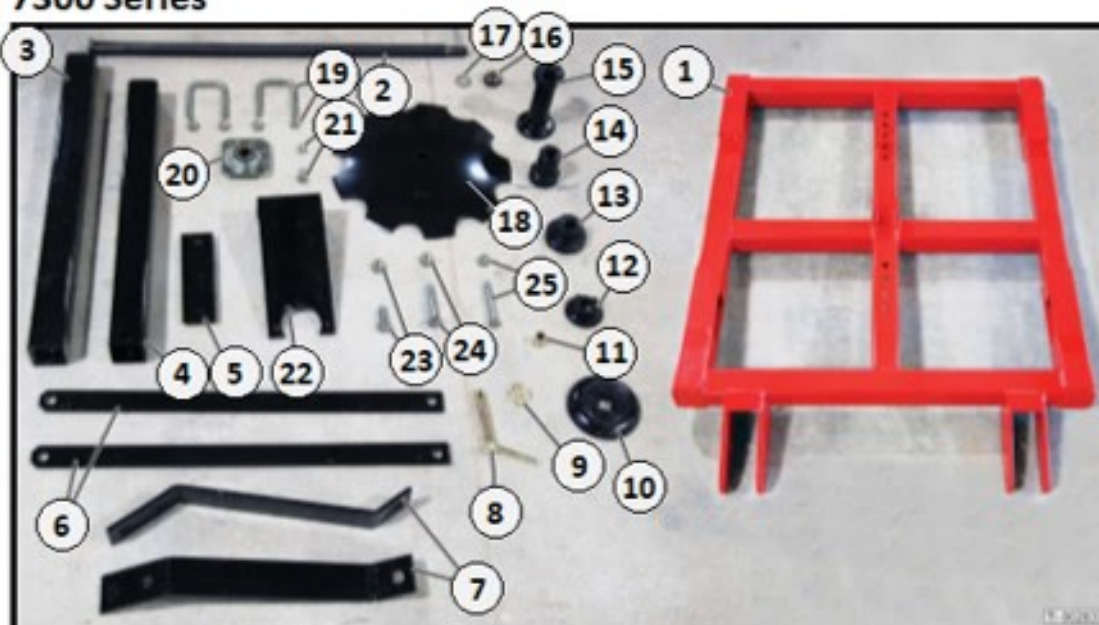
7100 Series



Item	Part #	Description	Qty
1	710015	Frame - BLUE	1
	710016	Frame - GREEN	
	710017	Frame - GREY	
	710018	Frame - ORANGE	
	710019	Frame - RED	
	710020	Frame - YELLOW	
2	710004	C.O. Disc Blade 16"	A/R
3	710006	Axle 1"-Square x 18-1/4" - for 12-Disc Model	2
4	710007	Axle 1"-Square x 26" - for 16-Disc Model	2
5	710011	Bearing Cap Half with Zerk Fitting	16
6	110032	Lift Pin CAT-I	2
7	120011	Carriage Bolt & Locknut Kit 1/2"x 1-1/2" (6-PACK) - for Hanger	4
8	180029	Spacer 1-1/4" - for A-Frame/Back Brace	2
9	310030	Bolt & Locknut Kit 3/4"x 4" - for A-Frame/Back Brace	2
10	710014	Lockwasher 1" - for Disc Axle	4
11	410003	Locknut 1" - for Disc Axle	4
12	710005	Bearing Hanger	8
13	710008	Large-End Cap (Butt Plate)	4
14	710010	Spacer Spool 7-7/16"	A/R
15	710013	Small-End cap (Nut End)	4
16	710012	Bolt, Washer & Locknut Kit 1/2"x 5" - for Bearing Cap	16
17	710009	Ribbed Bearing Spool 7-1/2"	8
18	710002	A-Frame 3/8"x 25-1/2"	2
19	710003	Back Brace 3/8"x 2"x 30-1/2"	2

A/R = As Required

7300 Series



Item	Part #	Description	Qty
1	730016	Frame - BLUE	1
	730017	Frame - GREEN	
	730018	Frame - GREY	
	730019	Frame - ORANGE	
	730020	Frame - RED	
	730021	Frame - YELLOW	
2	710007	Axle 1"Square x 26" - for 16 Disc Model	2
	730011	Axle 1"Square x 34" - for 20 Disc Model	
	730012	Axle 1"Square x 41" - for 24 Disc Model	
3	730003	Gang Tube -Rear 28" - for 16 Disc Model	2
	730005	Gang Tube -Rear 36" - for 20 Disc Model	
	730007	Gang Tube -Rear 45" - for 24 Disc Model	
4	730002	Gang Tube -Front 25" - for 16 Disc Model	2
	730004	Gang Tube -Front 32" - for 2 Disc Model	
	730006	Gang Tube -Front 41" - for 24 Disc Model	
5	730008	Pivot Plate 3/8"x 3" x 10"	4
6	730000	Back Brace 3/8"x 2"x 34-1/2"	2
7	710002	A-Frame 3/8"x 3"x 25-1/2"	2
8	310031	Lift Pin CAT-I Handle Type	2
9	310032	Lynch Pin 3/8"	2
10	710008	Large End Cap (Butt Plate)	4
11	180029	Spacer 1-1/4" - for A-Frame/Back Brace	2
12	710013	Small End Cap - Nut End	4
13	730014	Half Spacer 2-3/8"	8
14	730013	Half Spacer 3-5/8"	8
15	730015	Spacer-Full Spool 7-7/16"	A/R
16	410003	Locknut 1" - for Axle	4
17	710014	Lockwasher 1" - for Axle	4
18	730001	C.O. Disc Blade 18"	A/R
19	730009	U-Bolt with Locknuts - for Hanger	16
20	730010	Flanged Bearing 1" Square	8
21	120011	Carriage Bolt & Locknut Kit 1/2"x 1-1/2" (6-Pack) - for Brg.	4
22	730050	Bearing Hanger	8
23	320020	Bolt & Locknut Kit 3/4"x 2" - for Bottom A-Frame/Back Brace	2
24	310030	Bolt & Locknut Kit 3/4"x 4" - for Top A-Frame/Back Brace	2
25	110029	Bolt & Locknut Kit 5/8"x 4-1/2" - for Pivot Plate	6

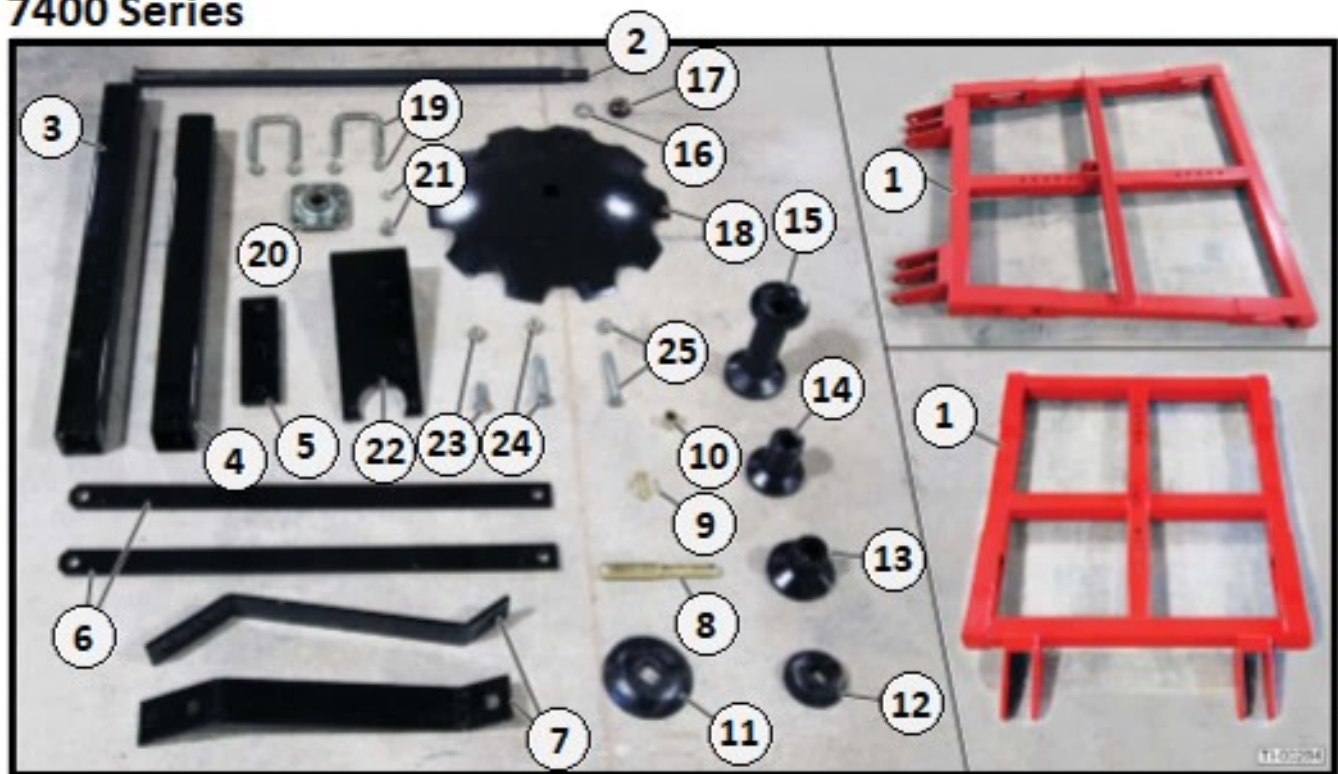
A/R = As Required

7300 Series

Item	Part #	Description	Qty
1	730016	Frame - BLUE	1
	730017	Frame – GREEN	
	730018	Frame – GREY	
	730019	Frame – ORANGE	
	730020	Frame – RED	
	730021	Frame – YELLOW	
2	710007	Axle 1"Square x 26" – for 16 Disc Model	2
	730011	Axle 1"Square x 34" – for 20 Disc Model	
	730012	Axle 1"Square x 41" – for 24 Disc Model	
3	730003	Gang Tube -Rear 28" – for 16 Disc Model	2
	730005	Gang Tube -Rear 36" – for 20 Disc Model	
	730007	Gang Tube -Rear 45" – for 24 Disc Model	
4	730002	Gang Tube -Front 25" – for 16 Disc Model	2
	730004	Gang Tube -Front 32" – for 2 Disc Model	
	730006	Gang Tube -Front 41" – for 24 Disc Model	
5	730008	Pivot Plate 3/8"x 3" x 10"	4
6	730000	Back Brace 3/8"x 2"x 34-1/2"	2
7	710002	A-Frame 3/8"x 3"x 25-1/2"	2
8	310031	Lift Pin CAT-I Handle Type	2
9	310032	Lynch Pin 3/8"	2
10	710008	Large End Cap (Butt Plate)	4
11	180029	Spacer 1-1/4" – for A-Frame/Back Brace	2
12	710013	Small End Cap – Nut End	4
13	730014	Half Spacer 2-3/8"	8
14	730013	Half Spacer 3-5/8"	8
15	730015	Spacer-Full Spool 7-7/16"	A/R
16	410003	Locknut 1" – for Axle	4
17	710014	Lockwasher 1" – for Axle	4
18	730001	C.O. Disc Blade 18"	A/R
19	730009	U-Bolt with Locknuts – for Hanger	16
20	730010	Flanged Bearing 1" Square	8
21	120011	Carriage Bolt & Locknut Kit 1/2"x 1-1/2" (6-Pack) – for Brg.	4
22	730050	Bearing Hanger	8
23	320020	Bolt & Locknut Kit 3/4"x 2" – for Bottom A-Frame/Back Brace	2
24	310030	Bolt & Locknut Kit 3/4"x 4" – for Top A-Frame/Back Brace	2
25	110029	Bolt & Locknut Kit 5/8"x 4-1/2" – for Pivot Plate	6

A/R = As Required

7400 Series



See Following Page for Parts Detail

7400 Series

Item	Part #	Description	Qty
1	740015	Frame – BLUE (for Models 7416-7420)	1
	740016	Frame – GREEN (for Models 7416-7420)	
	740017	Frame – GREY (for Models 7416-7420)	
	740018	Frame – ORANGE (for Models 7416-7420)	
	740019	Frame – RED (for Models 7416-7420)	
	740020	Frame – YELLOW (for Models 7416-7420)	
	740024	Frame – BLUE (for Model 7424)	
	740025	Frame – GREEN (for Model 7424)	
	740026	Frame – GREY (for Model 7424)	
	740027	Frame – ORANGE (for Model 7424)	
	740028	Frame – RED (for Model 7424)	
2	740006	Axle 1-1/8" Square x 31" – for 16 Disc Model	A/R
	740007	Axle 1-1/8" Square x 40-1/4" – for 20 Disc Model	
	740023	Axle 1-1/8" Square x 49-1/2" – for 24 Disc Model	
3	740003	Gang Tube-Rear 37" – for 16 Disc Model	2
	730007	Gang Tube-Rear 45" – for 20 Disc Model	
	740022	Gang Tube-Rear 54" – for 24 Disc Model	
4	740002	Gang Tube-Front 33" – for 16 Disc Model	2
	730006	Gang Tube-Front 41" – for 20 Disc Model	
	740021	Gang Tube-Front 51" – for 24 Disc Model	
5	730008	Pivot Plate 3/8"x 3"x 10"	4
6	730000	Back Brace 3/8"x 2"x 34-1/2"	2
7	710002	A-Frame 3/8"x 3"x 25-1/2"	2
8	310031	Lift Pin CAT-I Handle Type – for Models 7416-7420	A/R
	450006	Stepdown Lift Pin – for Model 7424	
9	310032	Lynch pin 3/8"	2
10	180029	Spacer 1-1/4" – for A-Frame/Back Brace	2
11	740008	Bumper Washer (Butt Plate)	4
12	740012	End Spacer (Nut End)	4
13	740009	Half Spacer 3-1/4"	8
14	740010	Half Spacer 4-1/2"	8
15	740011	Space-Full Spool 9"	A/R
16	740014	Locknut 1" – for Disc Axle	4
17	740013	Lockwasher 1" – for Disc Axle	4
18	740001	C.O. Disc Blade 20"	A/R
19	730009	U-Bolt with Locknuts – for Hanger	16
20	740005	Flanged Bearing 1-1/8"	8
21	120011	Carriage Bolt & Locknut Kit 1/2"x 1-1/2" (6-Pack) – for Bearing	4
22	730050	Bearing Hanger	8
23	320020	Bolt & Locknut Kit 3/4"x 2" – for Bottom A-Frame	2
24	310030	Bolt & Locknut Kit 3/4"x 4" – for A-Frame/Back Brace	2
25	110029	Bolt & Locknut Kit 5/8"x 4-1/2" – for Pivot Plate	6

A/R = As Required