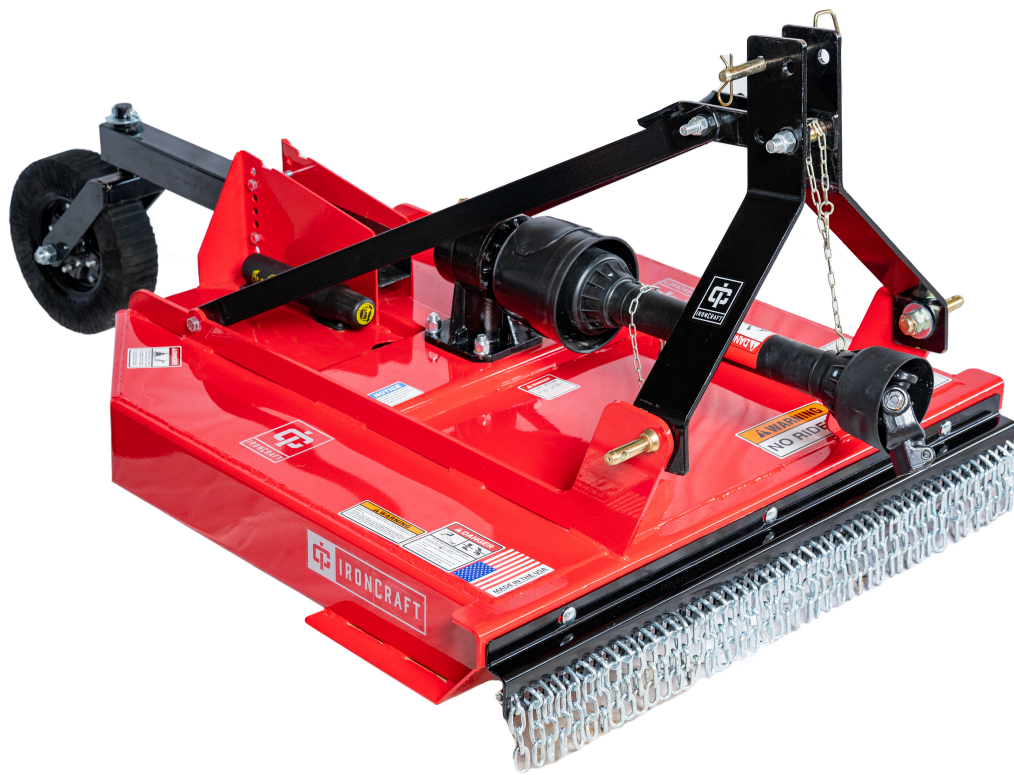


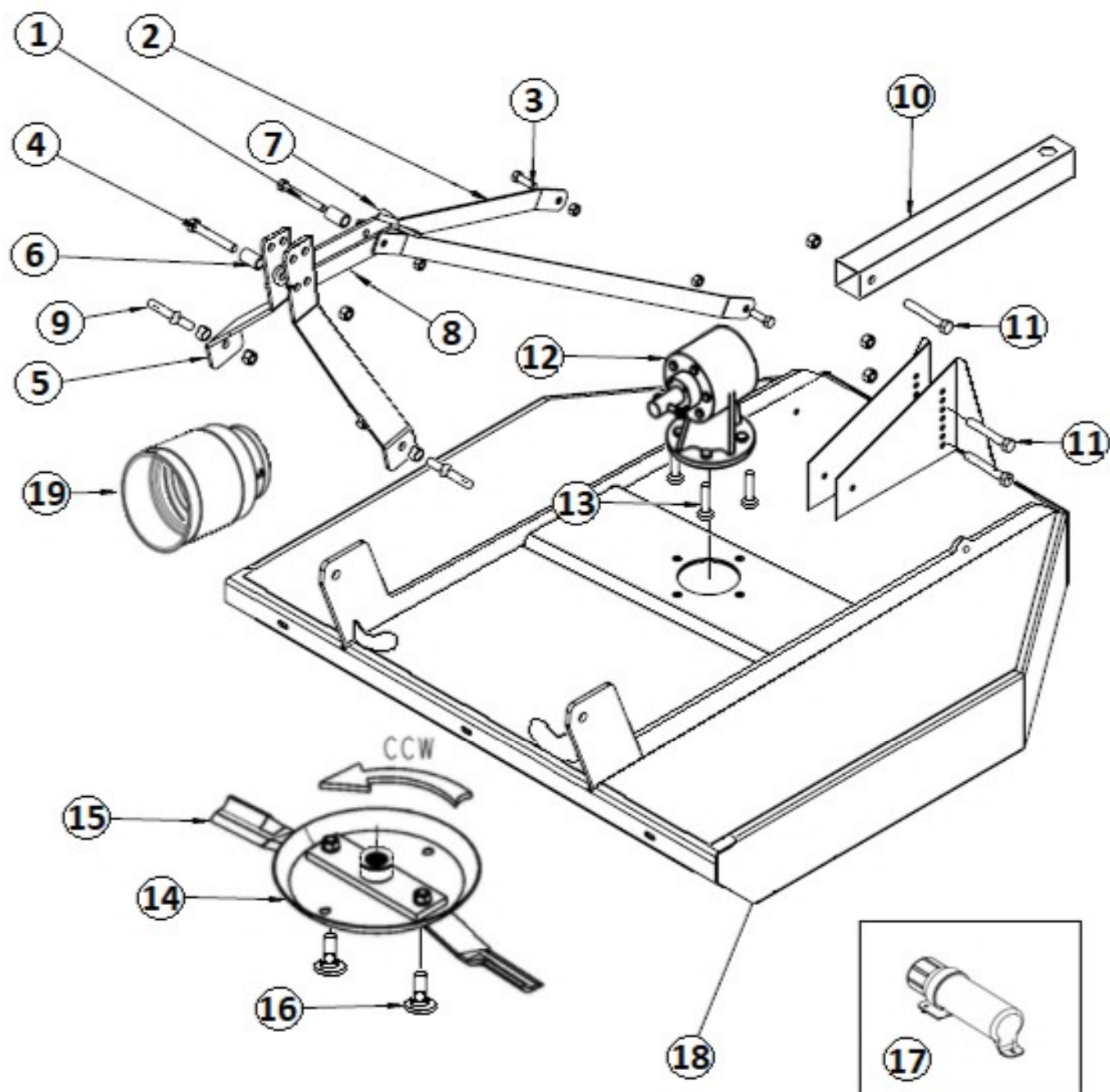
IRONCRAFT

Contact your Authorized Ironcraft Dealer
for all your parts needs



135 SERIES ROTARY CUTTER PARTS MANUAL

Deck Components

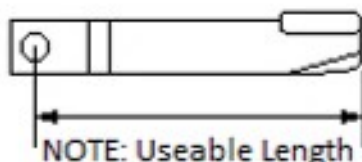


Deck Components

(Bolt holes 13" Ctr to Ctr)

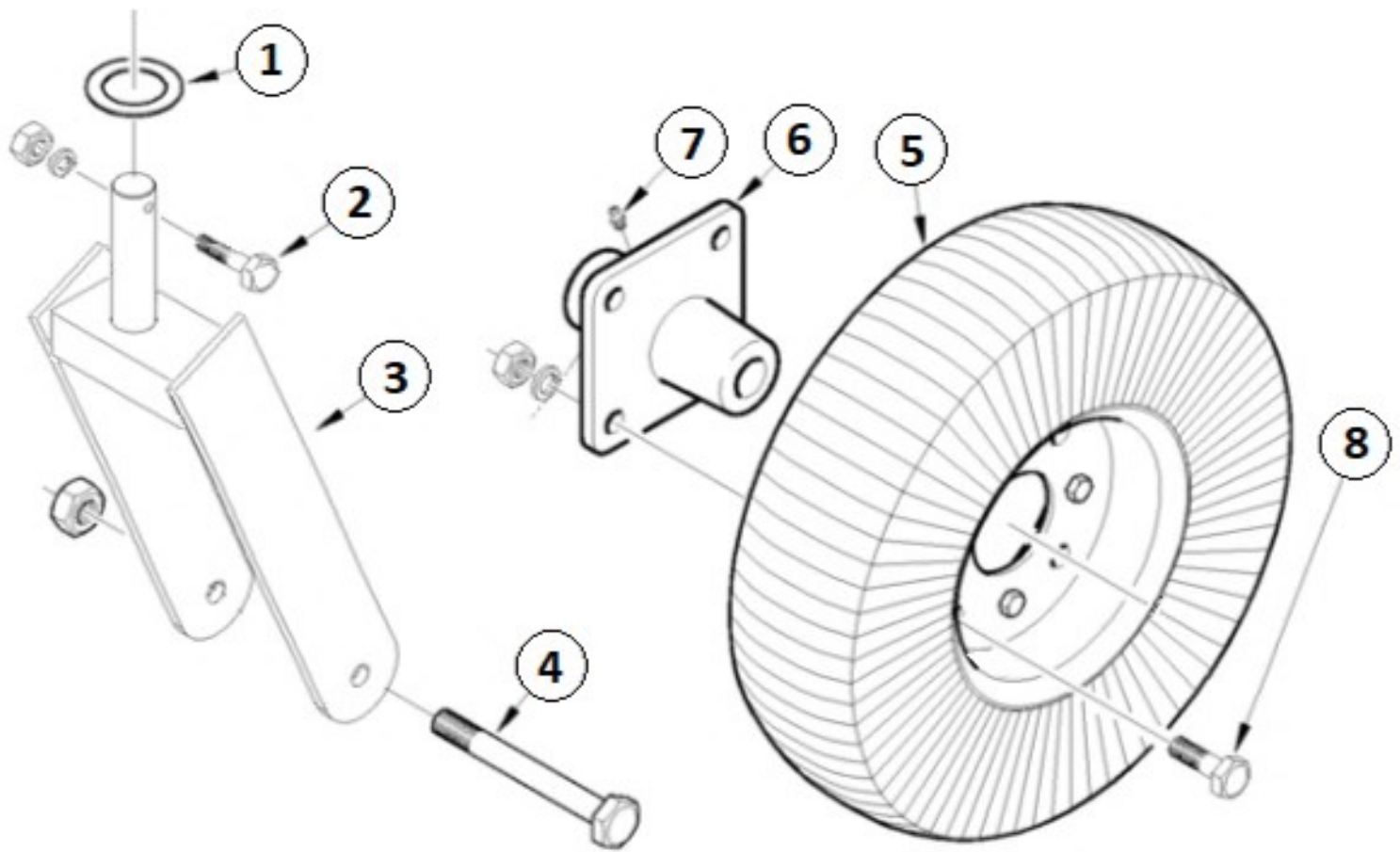
Item	Part #	Description	Qty
1	110029	A-Frame Top Back Bolt & Nut Kit 5/8"x 4-1/2"	1
2	120008	Back Brace – Left or Right 1/4"x 44-1/2"	2
3	110004	Bolt & Nut Kit 5/8"x 2" (4-Pack)	1
4	110027	A-Frame Top Front Bolt & Nut Kit 3/4"x 4-1/2"	1
5	120004	A-Frame – Left or Right	2
6	110030	A-Frame Spacer 2"	2
7	120032	Knuckle – RH Wing Style	1
8	120006	Knuckle – LH Wing Style	1
9	110032	Lift Pin with Nut & Lock Washer	2
	120005	Lift Pin Bushing 1/2"x 7/8" I.D. x 1-1/4" O.D.	2
10	120002	Tailwheel Tube 34"	1
11	120003	Tailwheel Tube Bolt & Nut 1/2"x 4-1/2"	3
12	110001	Gearbox – Shear Pin Type 55-hp	1
	* 110007	Shear Pin 1/2"x 3-1/2" Grade-2 with Nut (5-Pack)	1
13	110004	Bolt & Nut Kit 5/8"x 2" (4-Pack)	1
14	110010	Blade Carrier (Bolt holes 13" Ctr to Ctr)	1
15	T-42	Cutter blades (Sold as Pairs) Usable Length 13-1/2"	1
16	110012	Blade Bolt Kit (Sold as Pairs)	1
17	110034	Manual Holder with Screws	1
18	110080	3.5' Deck Skin w/Decals – RED	A/R
	110081	3.5' Deck Skin w/Decals – GREEN	A/R
	110082	3.5' Deck Skin w/Decals – ORANGE	A/R
	110083	3.5' Deck Skin w/Decals – YELLOW	A/R
	110084	3.5' Deck Skin w/Decals – BLUE	A/R
	110085	3.5' Deck Skin w/Decals – GREY	A/R
19	110005	Gearbox Shield - SP	1
	110006	Bolt & Lockwasher Kit 5/16"x 1/2" (4-Pack)	1

*Not Shown



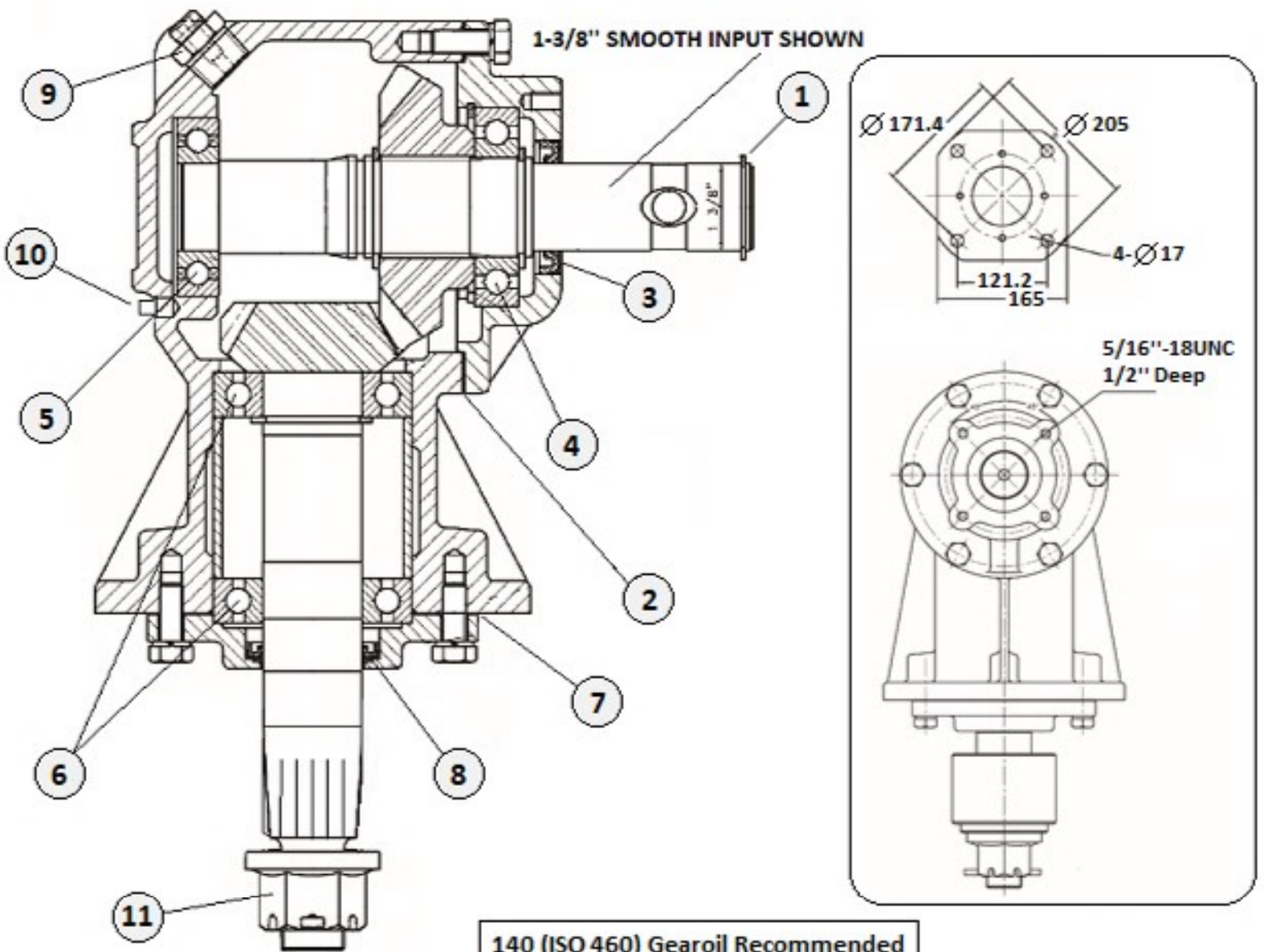
NOTE: Uses 1-11/16" Socket size for Blade Bolt Nut

Tailwheel Components



Item	Part #	Description	Qty
1	110019	Flat Washer 1-1/4"	1
2	110070	Bolt & Nut Kit 1/2"x 2-1/2" Gr.2	1
3	110018	Tailwheel Fork	1
4	110020	Tailwheel Axle Bolt & Nut Kit 1"x 8"	1
5	110022	Laminated Wheel & Rim	1
6	110024	Standard Wheel Hub W/Bolts	1
7	110021	Zerk Fitting 14/28	1
8	110017	Hub Bolt Kit 1/2"x 1-1/2" (4-Pack)	1
	110072	Standard Duty Tailwheel Assembly - Complete	A/R

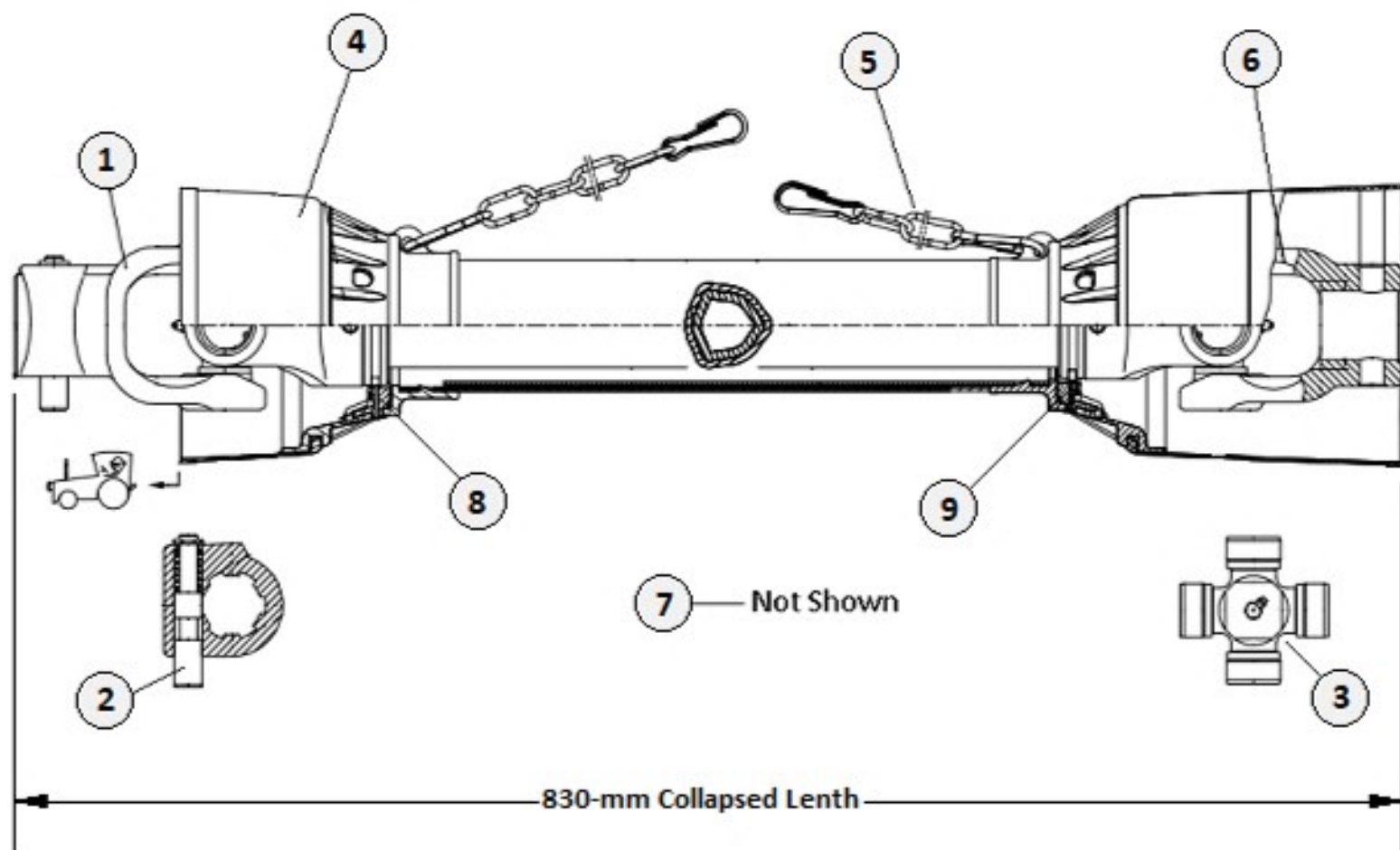
110001 - (RW-300) COMPLETE GEAR BOX - (1-3/8" SMOOTH INPUT)



140 (ISO 460) Gearoil Recommended
Fill level 22-oz (0.66-Qt)

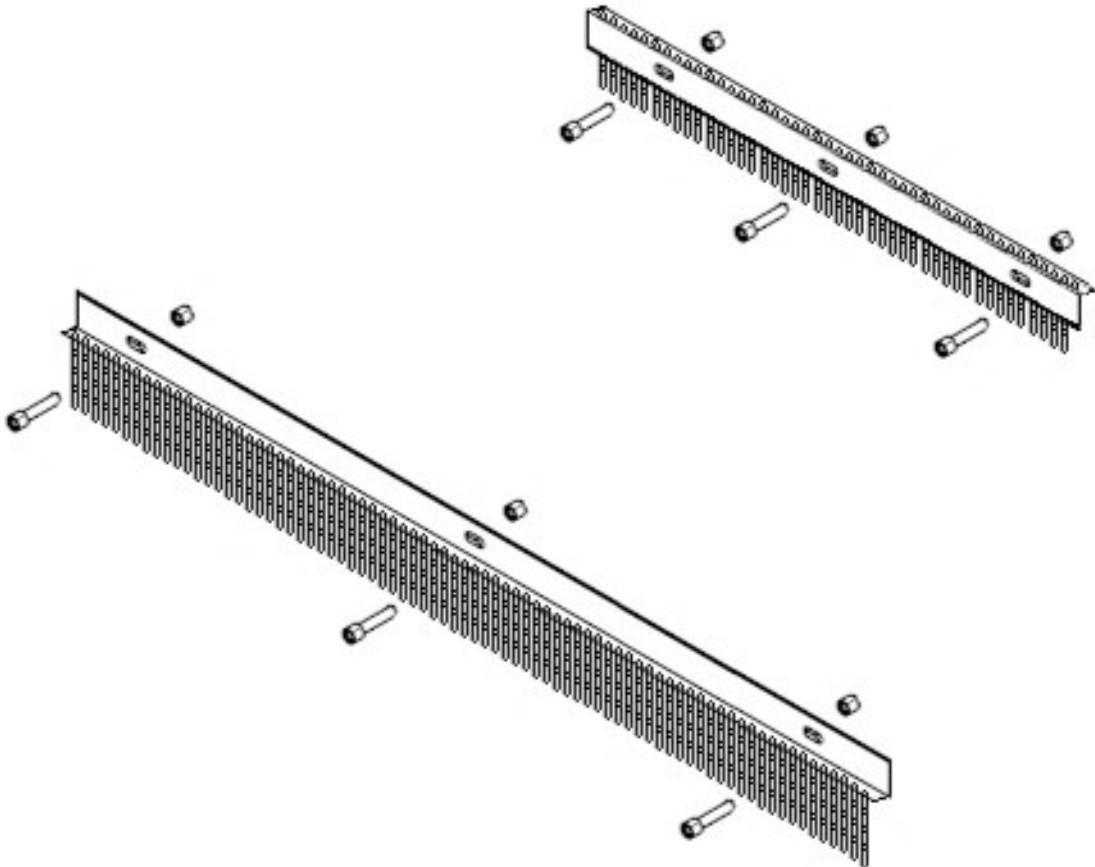
Item	Part #	Description	Qty
1	110003	Retaining Ring	1
2	551000	Input Gasket Kit	1
3	551001	Input Seal	1
4	551004	Input Bearing – Front	1
5	551005	Input Bearing – Rear	1
6	551006	Output Bearing	2
7	551007	Output Gasket Kit	1
8	551008	Output Seal	1
9	110008	Pressure Relief Plug	1
10	110009	Pipe Plug (Square Head)	1
11	110013	Castle Nut / Cotter Pin Kit – 1" Fine Thread	1
	110001	Complete Gearbox (1-3/8" Smooth) Shown	

SHEAR PIN - DRIVELINE COMPONENTS



Item	Part #	Description	Qty
1	552000	Tractor Yoke with Push Pin 1-3/8" 6-S	1
2	552001	Push Pin Kit	1
3	552003	Cross Kit 27 x 74.6	2
4	552004	Complete Safety Shield	1
5	552005	Safety Chain	2
6	552006	Yoke 1-3/8"-Smooth	1
7	110007	Shearbolt Kit 1/2"x 3-1/2" Gr.2 (5-Pack)	1
8	552008	Outer Plastic Shield Bearing	1
9	552009	Inner Plastic Shield Bearing	1
	110035	Complete Shearpin Driveline (Series 4)	

CHAIN GUARDS



Item	Part #	Description	Qty
1	CG-135	Chain Guard Kit (Front & Rear)	1