



Contact your Authorized Ironcraft Dealer
for all your parts needs

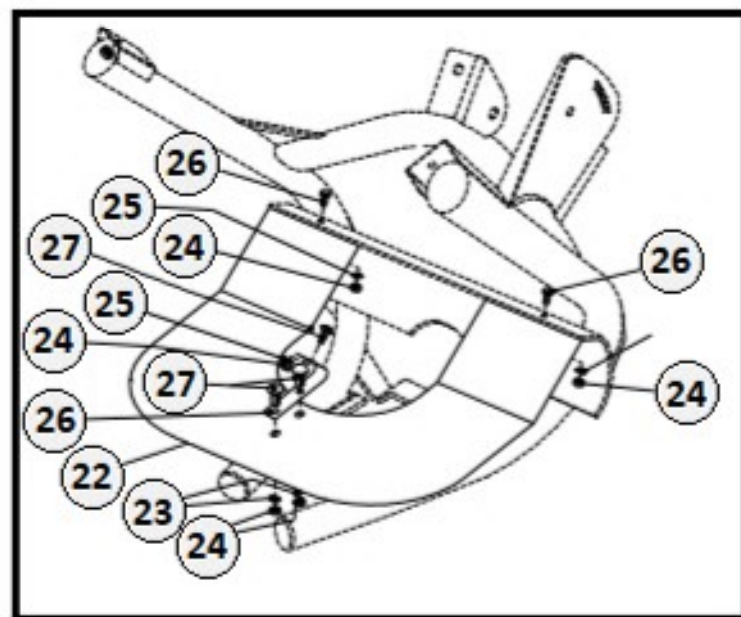
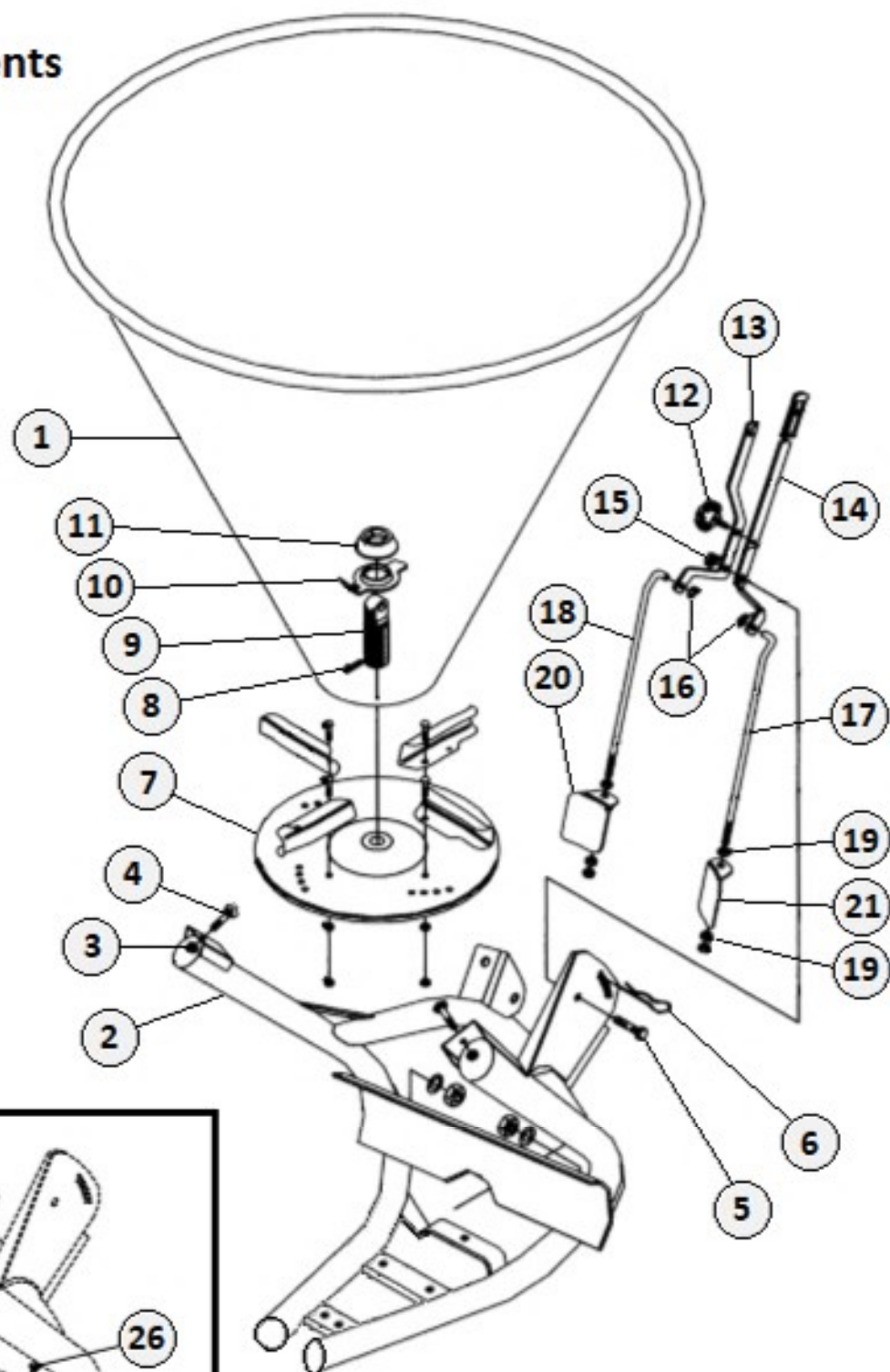


**9510 PTP SERIES
ATV-PULL TYPE SPREADER
PARTS MANUAL**

Hopper Assy Components

7. PARTS BREAKDOWN

Table 01



Hopper Assy Components

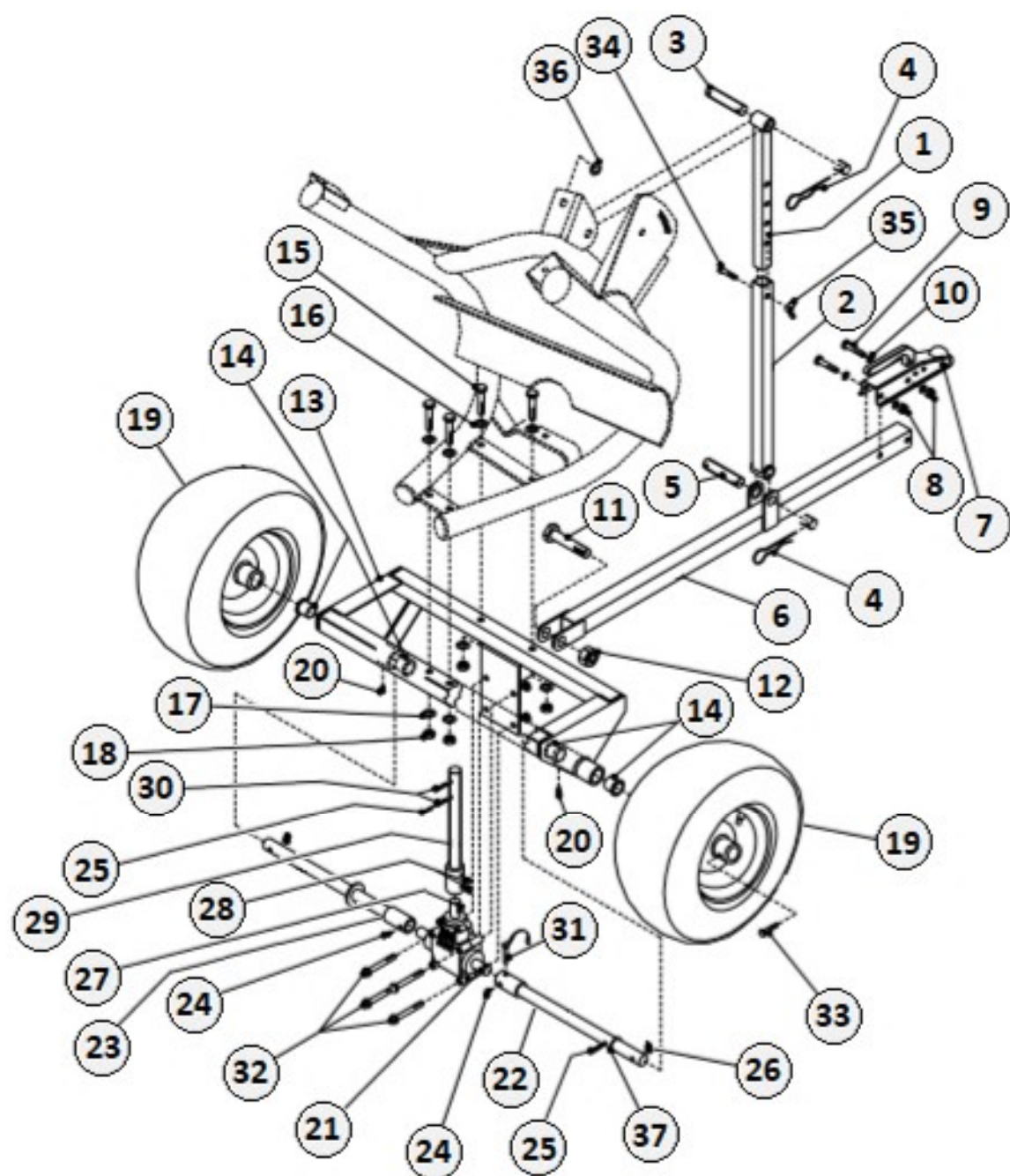
Hopper Assy Components

Item	Part #	Description	Qty
1	609.008	Hopper 180	1
2	613.026	Frame NOT - Sold Separately	1 N/A
3	301.010	Nut M10	* 2
4	300.023	Bolt M10 x 20	* 2
5	300.024	Bolt M12 x 35	* 1
6	307.001	Split Pin M4.5	1
7	610.001	Spreader Disc with Vanes	1
8	305.001	Spring Pin M8 x 40	2
9	330.001	Entrainer – Drive Shaft	1
10	619.002	Lower Agitator	1
11	304.013	Rubber Ring	1
12	302.003	Lever Lock Knob 8 x 25	1
13	604.001	Right Lever Short Version	A/R
	604.005	Right Lever Long Version	A/R
14	604.002	Left Lever Short Version	A/R
	604.006	Left Lever Long Version	A/R
15	301.008	Self-Locking Nut M12	* 1
16	303.009	Flatwasher M10.5 x 21	* 2
17	602.002	Left Tie Rod	1
18	602.001	Right Tie Rod	1
19	301.014	Nut M10	6
20	605.003	Right Shutter	1
21	605.004	Left Shutter	1
22	606.010	Sheet Guard	1
23	303.013	Washer M8 x 24	* 2
24	301.012	Nut M8	* 2
25	303.007	Washer M8 x 17	* 2
26	300.029	Bolt M8 x 20	* 2
27	300.030	Bolt M8 x 16	* 3
28	618.006	Lever Assy – Short Version (Includes Items 12 thru 21)	A/R
	618.013	Lever Assy – Long Version (Includes Items 12 thru 21)	A/R

A/R = As Required

* OL = Obtain Locally

Frame Components

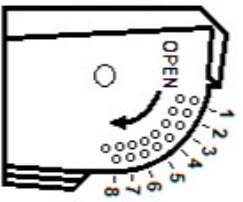


Frame Components

Item	Part #	Description	Qty
1	606.060	Inner Tube Level Stop with Bushing	1
2	606.061	Outer Tube Level Stop with Bushing	1
3	633.003	Pivot Pin – Diameter 22mm	* 1
4	305.008	Spring Hair Pin R3	* 2
5	633.003	Pivot Pin – Diameter 22mm	* 1
6	613.030	Tow Tube for 1-7/8" Tow Hitch	A/R
	613.031	Tow Tube for 2" Tow Hitch	A/R
7	620.080	Tow Hitch for 1-7/8" Tube	A/R
	620.060	Tow Hitch for 2" Tube	A/R
8	301.013	Self-Locking Nut M10	* 2
9	300.020	Bolt M10 x 70	* 2
10	303.015	Washer M10 x 20	* 4
11	300.021	Bolt M22 x 80	* 1
12	301.006	Self-Locking Nut M22	* 1
13	613.025	Support Frame NOT - Sold Separately	1 N/A
14	325.024	Smooth Bearing with Flange	4
15	300.020	Bolt M10 x 70	* 4
16	303.015	Washer M10 x 20	* 4
17	303.025	Washer M10 x 30	* 4
18	301.013	Self-Locking Nut M10	* 4
19	620.079	Wheel & Tire	2
20	306.002	Grease Nipple M8	* 2
21	322.008	Gearbox	1
22	620.083	Left Axle	1
23	620.082	Right Axle	1
24	306.002	Grease Nipple M8	* 2
25	305.003	Spring Pin 5 x 40	* 2
26	301.001	Self-Locking Nut M8	* 2
27	326.003	Keyway 8 x 7 x 20	1
28	305.015	Dowel M6	2
29	323.013	Output Shaft with Bushing	1
30	305.001	Spring Pin 8 x 40	2
31	302.006	Pin 8mm	1
32	300.018	Bolt M10 x 100	4
33	300.027	Bolt M8 x 50	2
34	300.019	Bolt M8 x 40	* 1
35	301.005	Nut M8	* 1
36	303.025	Washer M10 x 30	* 2

A/R = As Required

* OL = Obtain Locally



SPREADING CHART

SPREADING CHART FOR FERTILIZER

TRACTOR SPEED (MPH) — WORKING WIDTH (FEET) 2 3 4 5 6 7 8 8.5
Quantity Spread in Lbs / Acre at Various Gate Settings

LARGE GRANULAR FERTILIZER	2.5	—	132	245	402	635	929	1014	1140	1248
	5.0	6.0	66	123	201	318	465	507	570	624
	7.5	—	44	82	134	212	310	338	380	416
MEDIUM GRANULAR FERTILIZER	2.5	—	—	311	448	709	925	1025	1118	1182
	5.0	53	—	156	224	355	463	513	559	591
	7.5	—	—	104	149	237	309	342	373	394
FINE GRANULAR FERTILIZER	2.5	—	112	189	322	529	747	842	963	1051
	5.0	40	56	95	166	265	374	421	482	526
	7.5	—	37	63	111	177	249	280	321	351
CRYSTAL (AMMON, SILPHATE)	2.5	—	226	368	560	890	1236	1354	1522	1632
	5.0	23	113	184	280	445	618	677	761	861
	7.5	—	75	123	187	297	412	451	507	544
THOMAS MEAL (BASIC SLAG)	4.0	—	—	571	—	—	1270	—	1685	—
	8.0	20	—	286	—	—	635	—	843	—

SPREADING CHART FOR SEED

TRACTOR SPEED (MPH) — WORKING WIDTH (FEET) 5 6 7 8
Quantity Spread in Lbs / Acre at Various Gate Settings

WHEAT	3	—	52	0	46	129	268
	5	—	—	0	28	77	151
	7	—	—	0	20	55	115
ALFALFA & CLOVER	3	—	31	43	163	340	545
	5	—	—	25	96	204	387
	7	—	—	19	70	146	277
FESCUE & RYEGRASS	3	—	19	0	0	85	161
	5	—	—	0	0	51	97
	7	—	—	0	0	36	59
RED CLOVER	3	—	31	44	157	333	542
	5	—	—	26	100	200	385
	7	—	—	19	72	143	275
KENTUCKY BLUE GRASS & BERMUDA GRASS	3	—	12	30	131	311	550
	5	—	—	18	78	186	396
	7	—	—	13	56	133	283
SUDAN GRASS	3	—	52	0	49	131	271
	5	—	—	0	29	79	153
	7	—	—	0	21	56	116
BARLEY	3	—	49	0	25	81	186
	5	—	—	0	15	49	111
	7	—	—	0	11	35	80
RYE	3	—	40	0	25	81	186
	5	—	—	0	15	49	111
	7	—	—	0	11	35	80