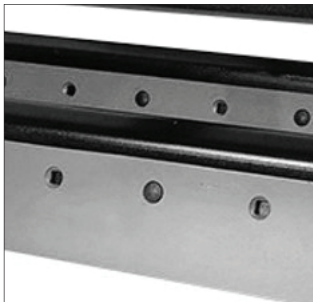
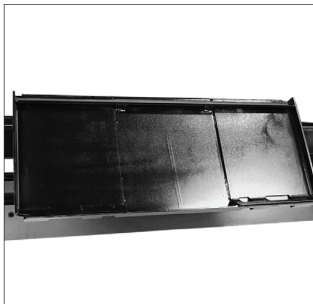
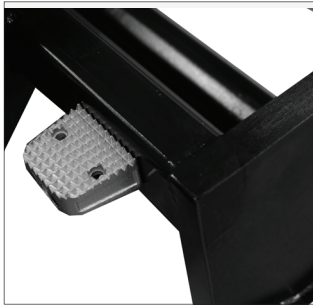


BOX GRADER



The simple design for this Box Grader attachment was inspired by a 1950s drag box grader. It has two sets of bidirectional blades so you can grade in forward and reverse. The adjustable blades are aggressive and have no problem smoothing potholes, while the side rails keep contact with the ground to ensure the grader does not dig in too far.



	72"	84"
WEIGHT	1,030 lbs.	1,080 lbs.
WIDTH TOTAL	77"	89"
DEPTH	56"	56"
HEIGHT	24"	24"
TUBING	H beam construction using 3" x 4.5" x 3/8" Wall Structural Tubing"	H beam construction using 3" x 4.5" x 3/8" Wall Structural Tubing"
MATERIAL	A572 Grade 50 Steel"	A572 Grade 50 Steel"
WEAR SURFACE	5/8" x 2" AR400"	5/8" x 2" AR400"
BLADE MATERIAL	High-carbon Manganese Steel Alloy, Rc 29"	High-carbon Manganese Steel Alloy, Rc 29"
BLADE SIZE	Thick x 6" Tall x 72" Wide	Thick x 6" Tall x 84" Wide
FINISH	Black Hammered Finish Powder Coat"	Black Hammered Finish Powder Coat"