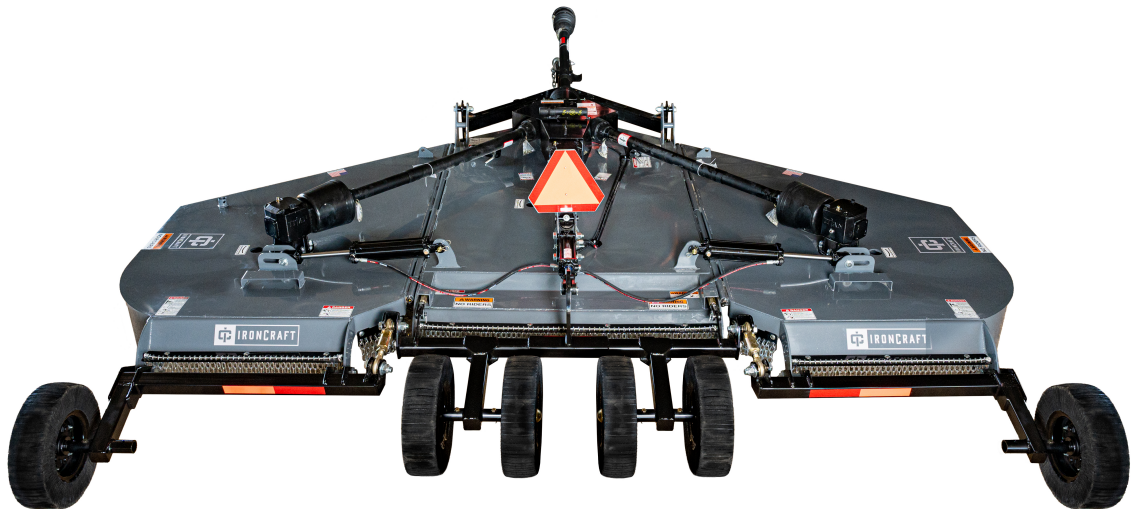


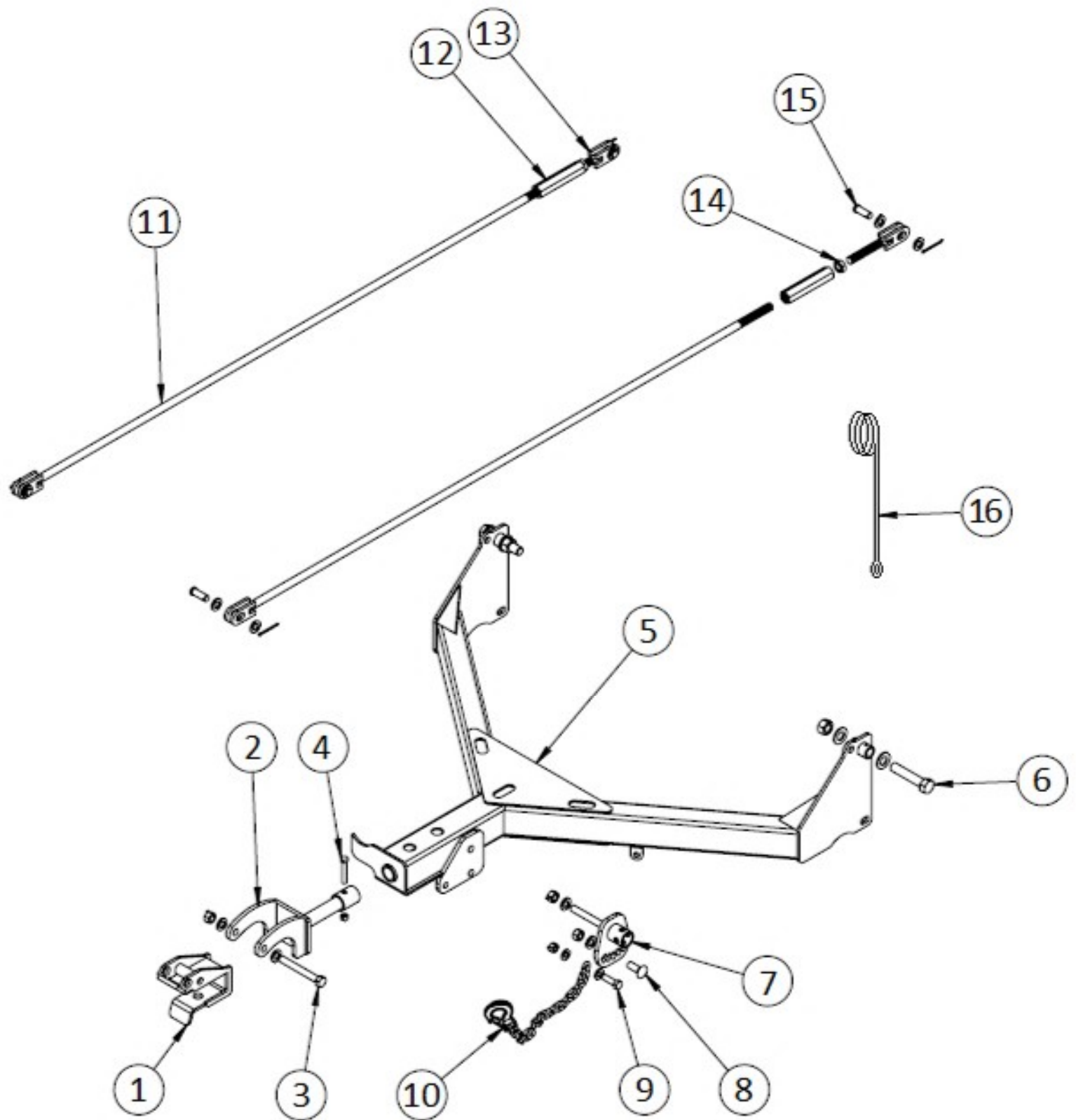


Contact your Authorized Ironcraft Dealer
for all your parts needs



2515 SERIES 15-FT FLEX WING CUTTER PARTS MANUAL

A-Frame Components

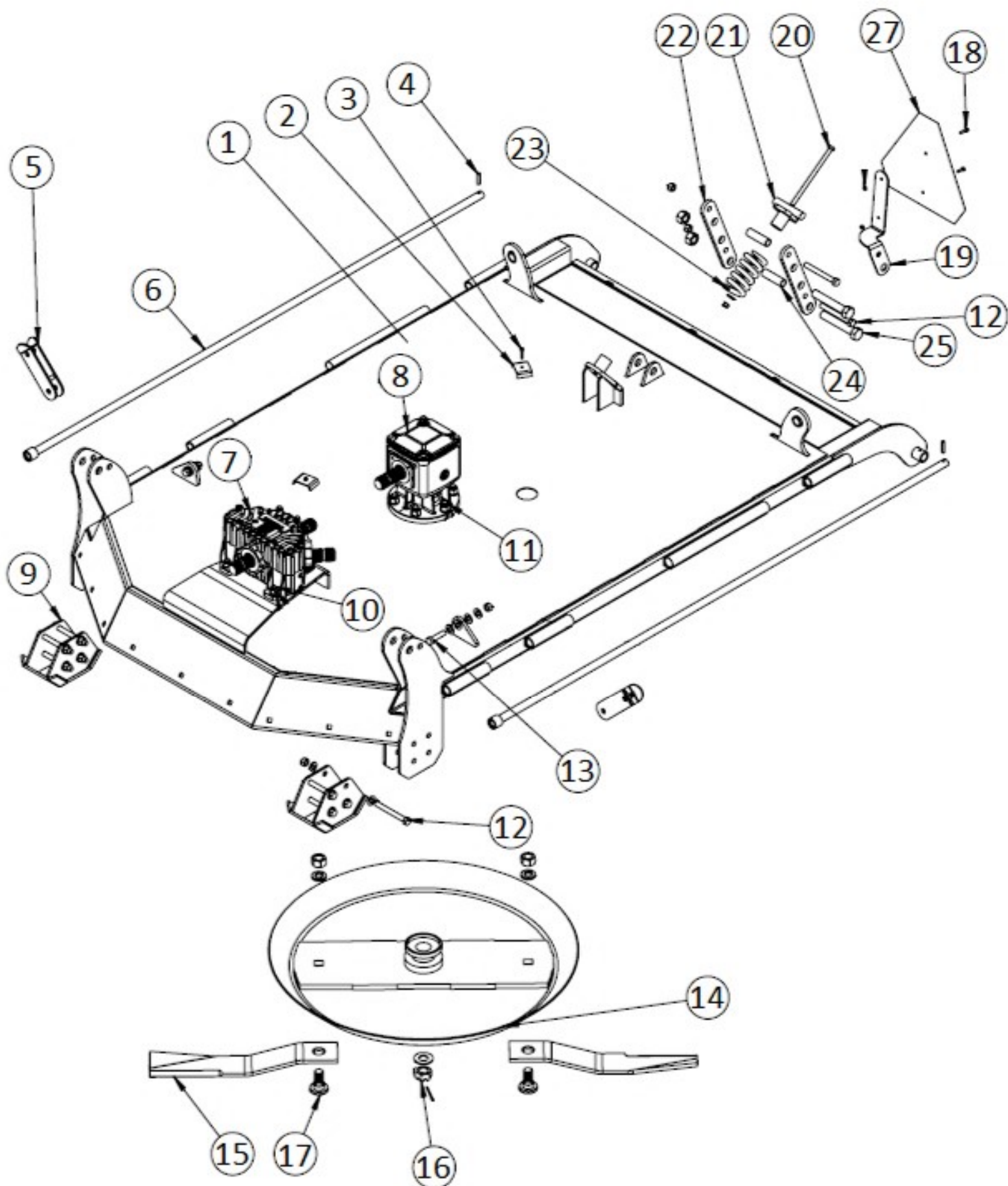


A-Frame Components

Item	Part #	Description	Qty
1	200016	CLEVIS HITCH WELDMENT	1
2	200020	RECEIVER HITCH WELDMENT	1
3	150047	BOLT 3/4"x 6" W/FLATWASHERS & LOCKNUT	1
4	180039	BOLT 1/2"x 3-1/2" W/LOCK NUT	1
5	200013	A-FRAME HITCH WELDMENT	1
6	180031	BOLT 1"x 5" W/FLATWASHERS & LOCKNUT	2
7	300027	JACK LUG WELDMENT	1
8	351504	CARRIAGE BOLT 3/4"x 2" W/FLATWASHER & NUT	1
9	351505	BOLT 5/8"x 2" W/FLATWASHERS & LOCKNUT	1
10	83000100	SAFETY TOW CHAIN	1
11	200024	LONG LEVELING ROD WELDMENT 84.625"	2
12	191229	LEVELING ROD ADJUSTER	2
13	200023	SHORT LEVELING ROD WELDMENT 7.625"	2
14	351508	JAM NUT 78"-9	2
15	351509	CLEVIS PIN 3/4" W/FLATWASHERS & COTTER PIN	4
16	191209	SPRING HOSE HOLDER	1
*	191513	TONGUE JACK (5000-lb)	1

* Not Shown

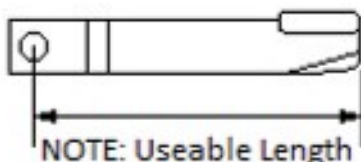
Center Deck Components



Center Deck Components

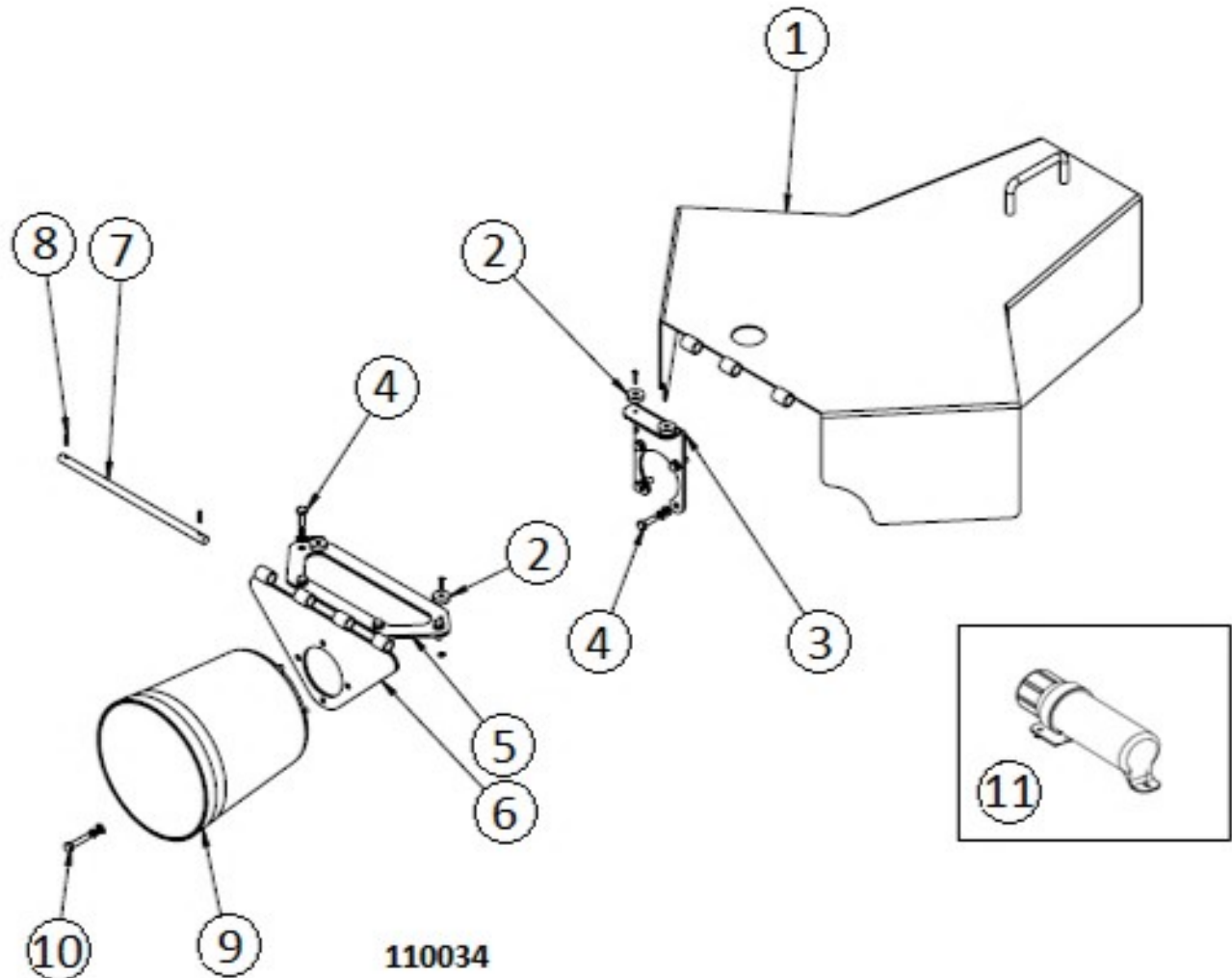
Item	Part #	Description	Qty
1	200005	CENTER DECK WELDMENT (Specify Color)	1
2	3010096	HOSE HOLDER	2
3	351511	SELF-TAPPING SCREW 1/4" X 1-1/2"	2
4	351510	ROLL PIN 3/8" X 1-3/4"	2
5	200017	DECK LOCK WELDMENT	2
6	200026	HINGE ROD WELDMENT	2
7	191501	SPLITTER GEARBOX 540-RPM	A/R
	191502	SPLITTER GEARBOX 1000-RPM	A/R
8	191508	CENTER GEARBOX 540-RPM	A/R
	191509	CENTER GEARBOX 1000-RPM	A/R
9	300012	CENTER SKID SHOE WELDMENT	2
10	110004	BOLT & NUT KIT 5/8" X 2" Gr.5 (4 Pack)	1
11	610030	BOLT & NUT KIT 3/4" X 2-1/2" Gr.5 (4 Pack)	1
12	150045	BOLT & NUT KIT 5/8" X 5-1/2" Gr.5	8
13	610004	BOLT & NUT KIT 5/8" X 2-1/2" Gr.5	2
14	200015	CTR STUMP JUMPER WELDMENT (Bolt holes 27.50" Ctr to Ctr)	1
15	RC-3515	CTR BLADE – CCW (Sold as pair) Useable Length 22-1/4"	1
16	191519	BLADE CARRIER RETAINER KIT	1
17	110012	BLADE BOLT KIT (Sold as pair)	1
18	351518	BOLT & NUT 1/4" X 1" Gr.2	2
19	2010063	SMV SIGN BRACKET	1
20	191219	SPRING BOLT KIT 1/2" X 9" with LW & FW	1
21	200027	SPRING MOUNT WELDMENT	1
22	2010056	SUSPENSION SPRING BRACKET	2
23	191218	SUSPENSION SPRING .625" X 3.2" O.D. X 6"	1
24	191223	SUSPENSION BRACKET SPACER	2
25	191224	BOLT & LOCKNUT 1" X 6" Gr.5	2
26	191222	BOLT & LOCKNUT KIT 5/8" X 5-1/2" Gr.5	2
27	191651	SMV SIGN	1

NOTE: A/R = As Required



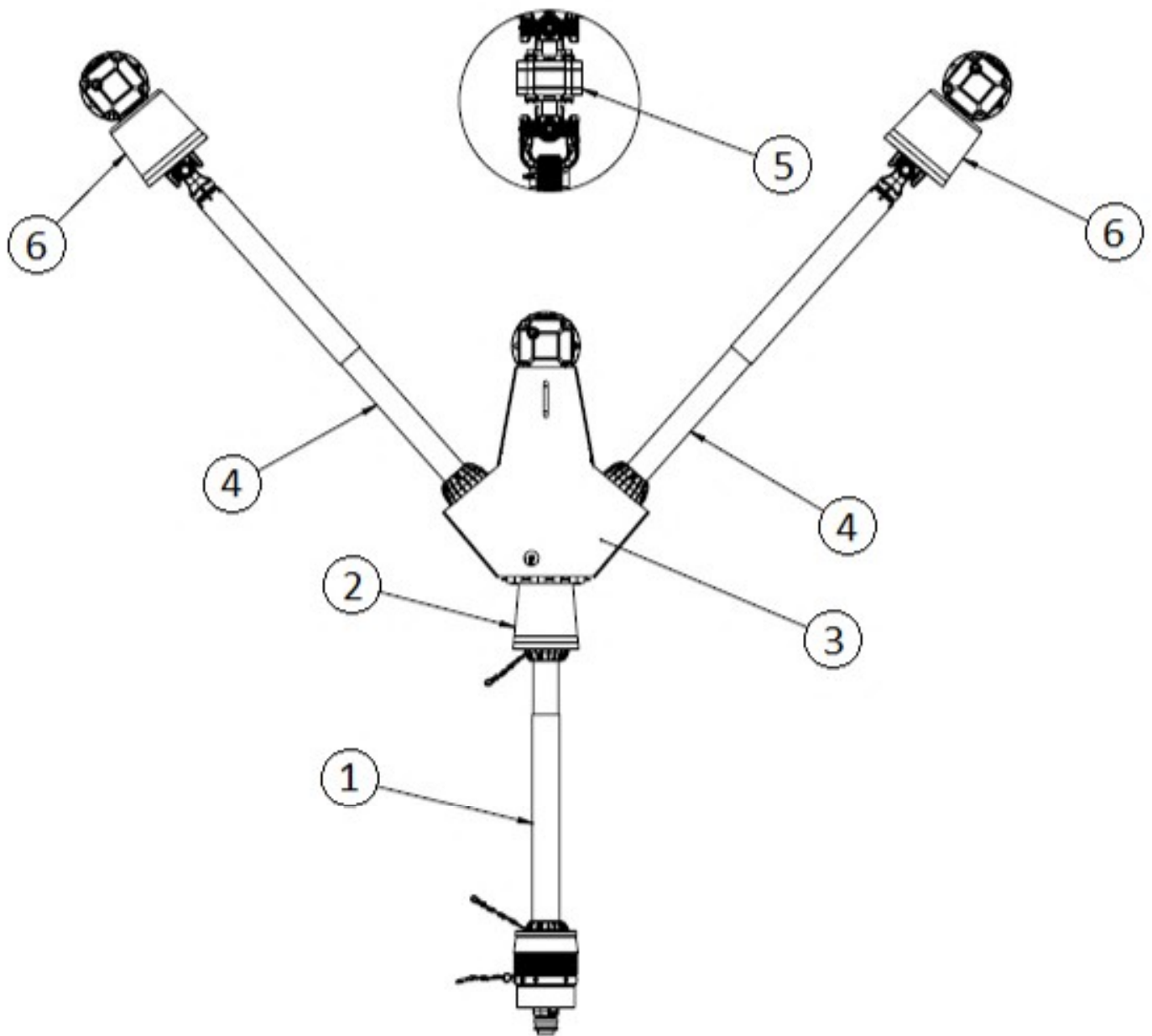
NOTE: Uses 1-11/16" Socket size for Blade Bolt Nut

Center Shield Components



Item	Part #	Description	Qty
1	300018	SPLITTER GEARBOX SHIELD	1
2	83070000	MAGNET with 6/32" X 3/4" CSK Bolt & Nylock Nut	4
3	3010097	CENTER GEARBOX MAGNET MOUNT	1
4	351521	BOLT M8 X 25 with Lockwashers & Flatwashers (8-Pack)	1
5	3010089	GEARBOX MAGNET MOUNT	1
6	300016	CENTER SHIELD MOUNT	1
7	3030002	CENTER SHIELD HINGE	1
8	111002	ROLL PIN 3/16" X 3/4"	2
9	120001	GEARBOX SHIELD	1
10	111001	BOLT M8 X 40 with Lockwashers & Flatwashers (4-Pack)	1
11	110034	DOCUMENT HOLDER WITH SCREWS	1

Driveline & Shield Components

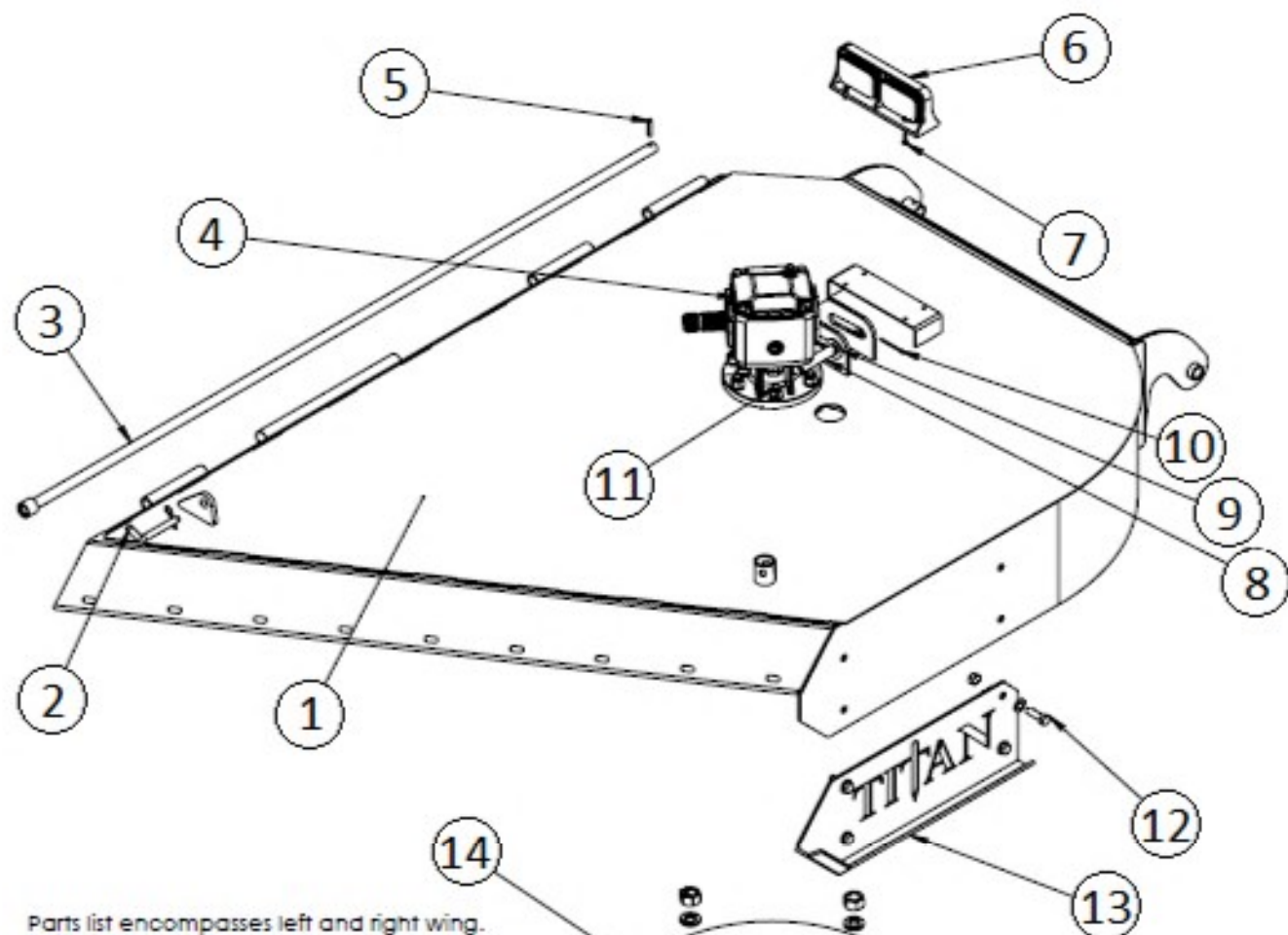


Item	Part #	Description	Qty
1	191560	C.V. DRIVELINE 540-RPM	A/R
	191563	C.V. DRIVELINE 1000-RPM	A/R
2	120001	GEARBOX SHIELD	1
3	300018	SPLITTER GEARBOX SHIELD	1
4	191561	WING DRIVELINE WITH SLIPCLUTCH	2
5	191506	SPLITTER CROSS SHAFT WITH SLIPCLUTCH	1
6	150076	GEARBOX SHIELD – LARGE	2

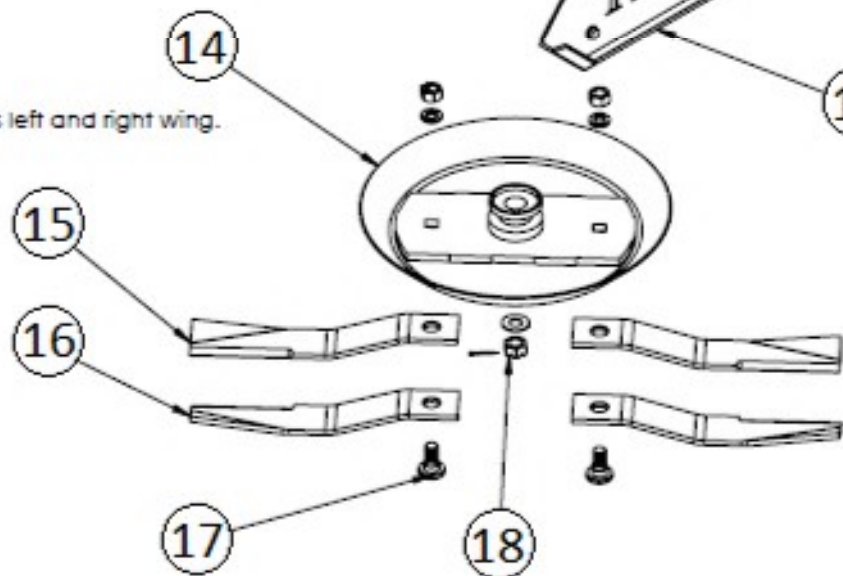
NOTE: A/R = As Required

Wing Deck Components

Parts list encompasses left and right wing.
Left wing shown



Parts list encompasses left and right wing.
Left wing shown

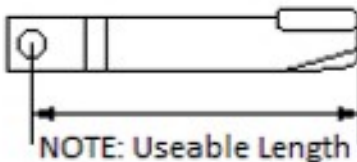


Wing Deck Components

Parts list encompasses left and right wing.
Left wing shown

Item	Part #	Description	Qty
1	200006	LEFT WING DECK WELDMENT (Shown)	A/R
	200007	RIGHT WING DECK WELDMENT	A/R
2	83030010	BENT PIN W/R-CLIP	1
3	200026	HINGE ROD WELDMENT	1
4	191512	LEFT WING GEARBOX (Shown)	A/R
	191510	RIGHT WING GEARBOX	A/R
5	351510	ROLL PIN 3/8" X 1-3/4"	1
6	191650	CAUTION LIGHT KIT	1
7	351516	BOLT & LOCKNUT 1/4" X 1"	4
8	83030009	CLEVIS PIN 1"	1
9	351512	FLATWASHER 1"-SAE	2
10	351514	COTTER PIN 1/8" X 2"	1
11	610030	BOLT W/NUT & WASHER 3/4" X 2-1/2" Gr.5 (4-Pack)	1
12	110004	BOLT W/NUT & WASHER 5/8" X 2" Gr.5 (4-Pack)	1
13	200018	LEFT WING SKID SHOE (Shown)	A/R
	200021	RIGHT WING SKID SHOE	A/R
14	200025	WING STUMP JUMPER WELDMENT (Bolt holes 15.50" Ctr to Ctr)	1
15	RC-3515	CCW - BLADE (RH WING) Sold in Pairs Useable Length 22-1/4"	1
16	LW-3515	CW - BLADE (LH WING) Sold in Pairs Useable Length 22-1/4"	1
17	110012	BLADE BOLT KIT - Sold in Pairs	1
18	191519	BLADE CARRIER RETAINER KIT	1

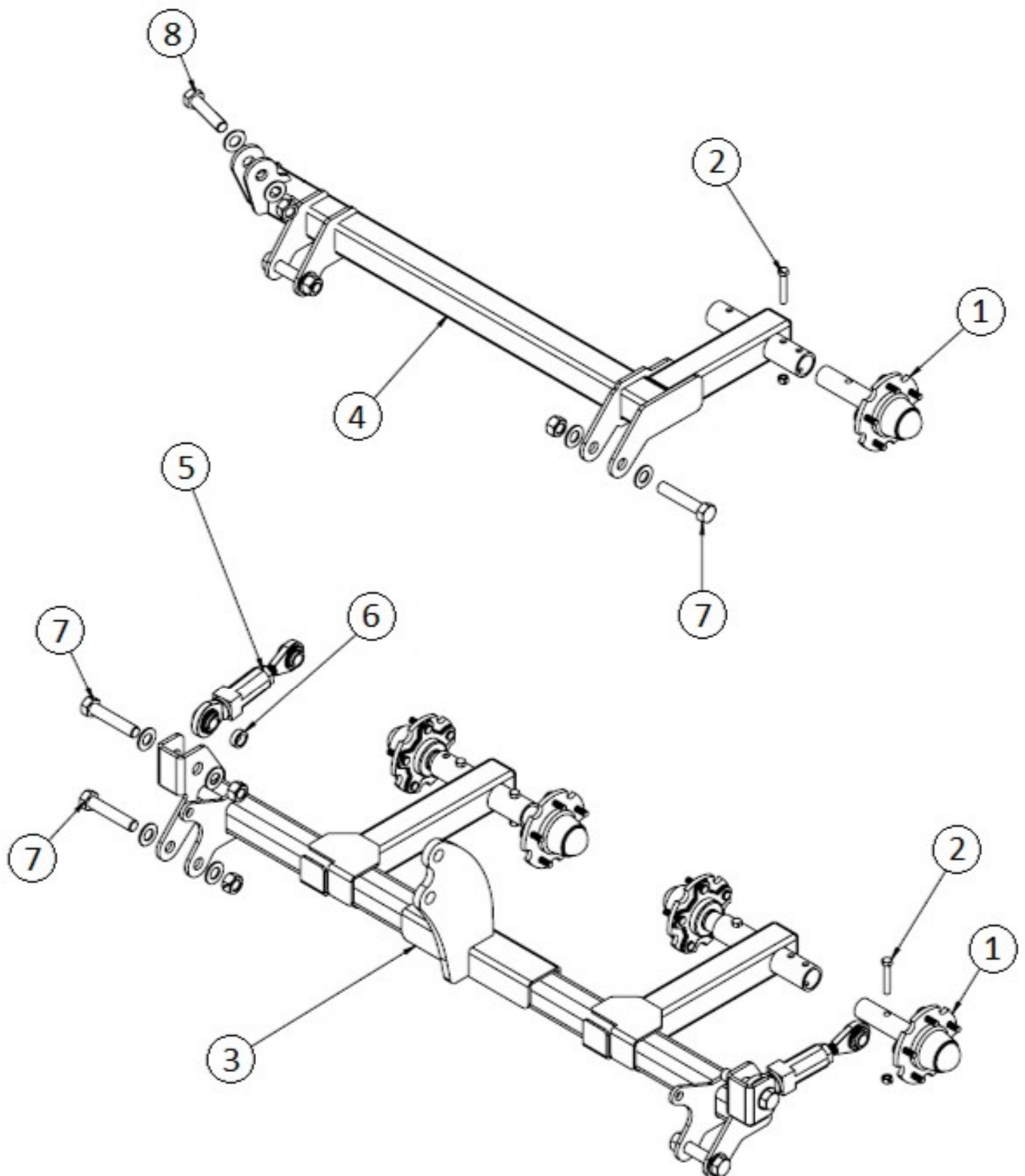
NOTE: A/R = As Required



NOTE: Uses 1-11/16" Socket size for Blade Bolt Nut

Wheel Lift Components

Parts List encompasses left and right wing tailwheel assembly
Left wing tailwheel assembly shown.



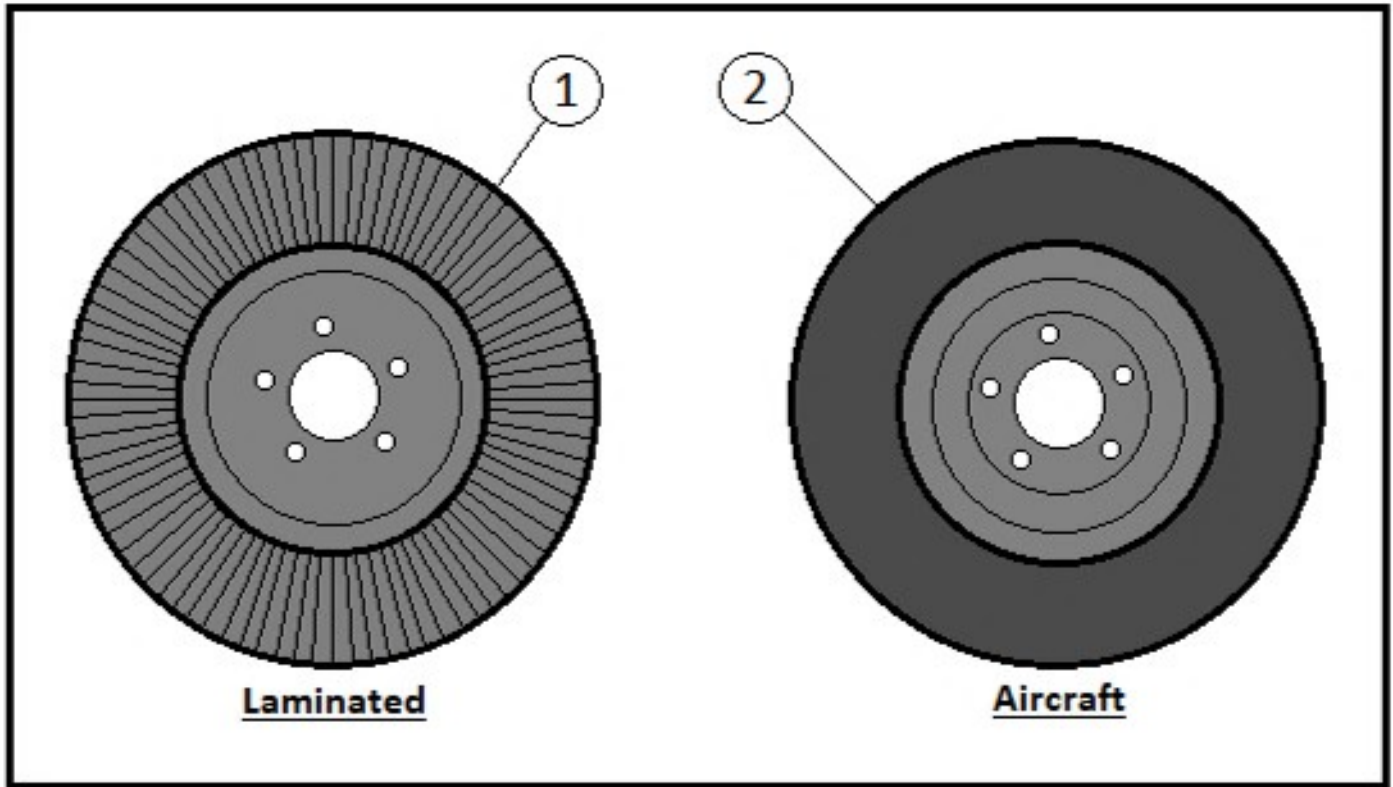
Wheel Lift Components

Parts List encompasses left and right wing tailwheel assembly
Left wing tailwheel assembly shown.

Item	Part #	Description	Qty
1	180038	HUB & SPINDLE ASSEMBLY	A/R
2	180039	BOLT & LOCKNUT 1/2" X 3-1/2" Gr.2	A/R
3	200008	CENTER WHEEL LIFT WELDMENT	1
4	200010	LEFT WING WHEEL LIFT WELDMENT (Shown)	1
	200011	RIGHT WING WHEEL LIFT WELDMENT	1
5	191551	TURNBUCKLE TAILWHEEL TUBE ADJUSTER	2
6	3050010	TURNBUCKLE SPACER	2
7	180031	BOLT W/FLATWASHERS & LOCKNUT 1" X 5" Gr.5	A/R
8	920006	BOLT W/FLATWASHERS & LOCKNUT 1" X 4-1/2" Gr.5	A/R

NOTE: A/R = As Required

WHEEL OPTIONS



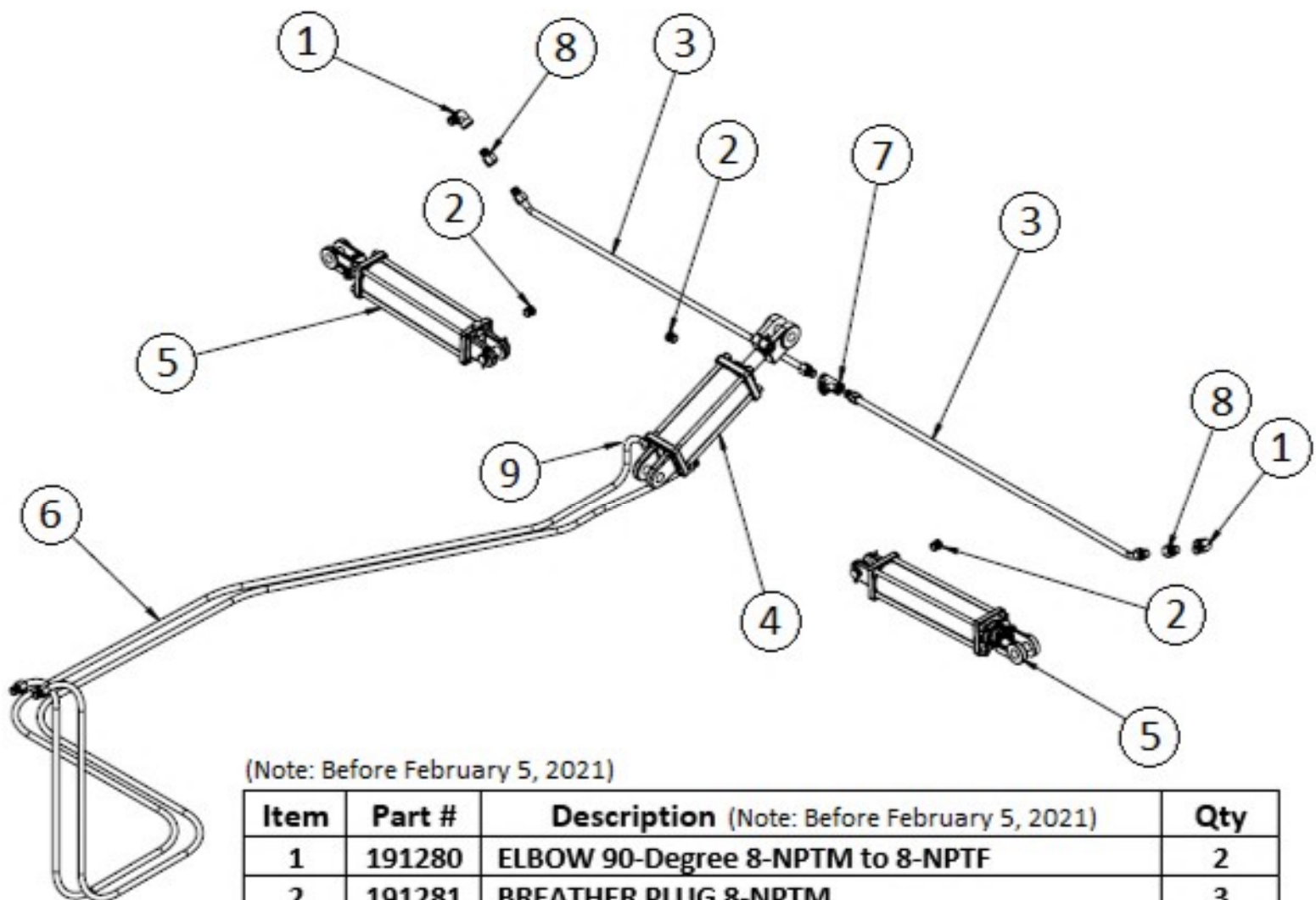
Item	Part #	Description	Qty
1	180040	LAMINATED WHEEL 20"	A/R
	300048	LAMINATED WHEEL 26"	A/R
2	300038	AIRCRAFT TIRE 26" (Foam Filled)	A/R
	300049	AIRCRAFT TIRE 29" (Pneumatic)	A/R

NOTE: A/R = As Required

Hydraulic Components

(Note: After February 5, 2021)

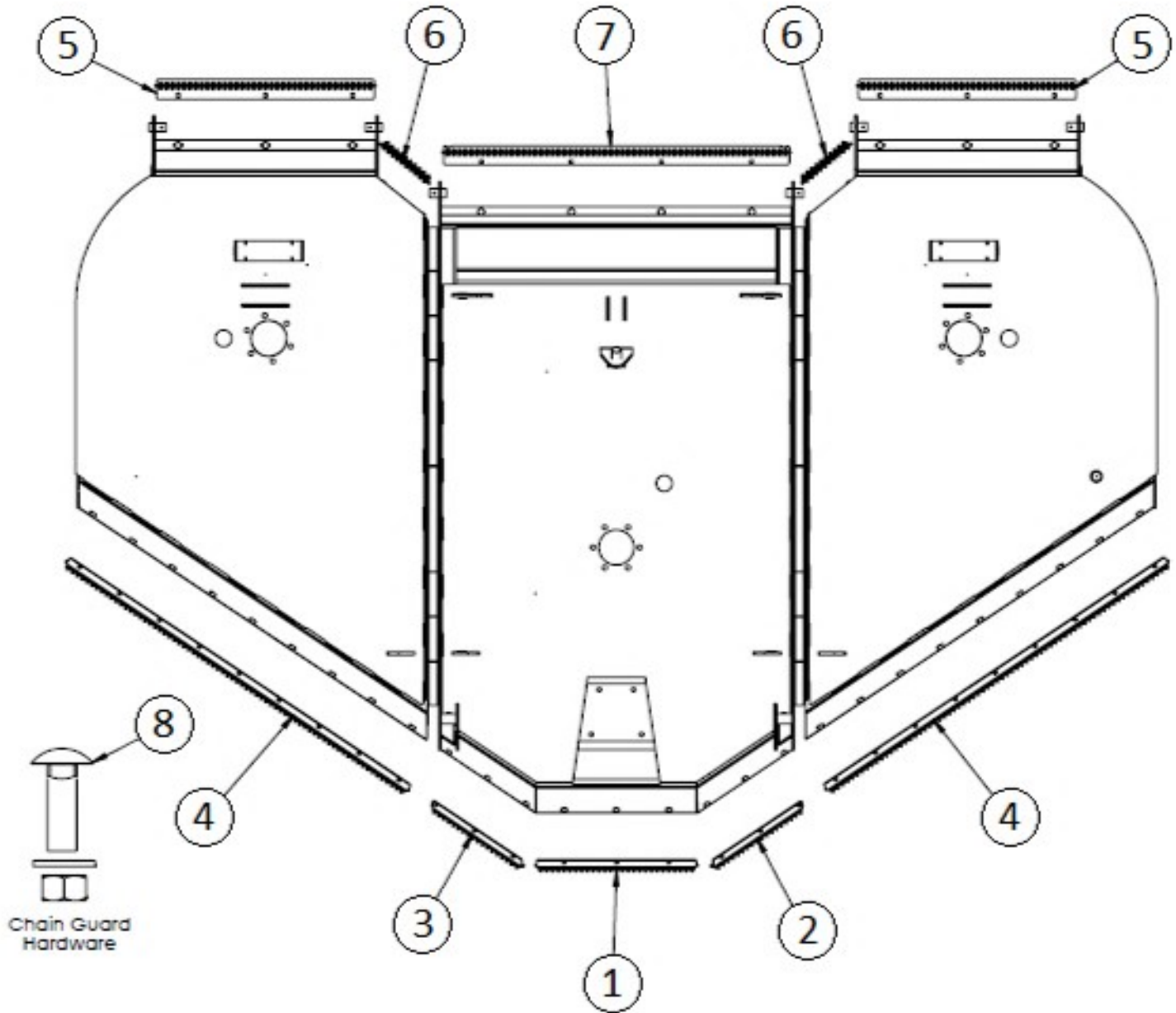
Item	Part #	Description (Note: After February 5, 2021)	Qty
1	200052	90-Degree Elbow Restrictor (6MJ-8NPT)	2
2	191281	Breather Plug 8-NPTM	3
3	200051	Hyd. Hose 3/8" x 48" (6FJ-both ends)	2
4	180030	Hyd. Cylinder 3" x 8"	1
5	191538	Hyd. Cylinder 3" x 12"	2
6	200050	Hyd. Hose 3/8" x 228" (NPT-6FJ Swivel)	2
7	200054	Tee Fitting (6MJ-Swivel)	1
9	200053	90-Degree Elbow (6MJ-8NPT)	1
	251521	COMPLETE HYD. HOSE KIT (Hose & Fittings Only)	



(Note: Before February 5, 2021)

Item	Part #	Description (Note: Before February 5, 2021)	Qty
1	191280	ELBOW 90-Degree 8-NPTM to 8-NPTF	2
2	191281	BREATHER PLUG 8-NPTM	3
3	191291	HYD. HOSE 3/8" X 48" 8MP-8MPX	2
4	180030	HYD. CYLINDER 3" X 8"	1
5	191538	HYD. CYLINDER 3" X 12"	2
6	191542	HYD. HOSE 3/8" X 228" 8MP-8MPX	2
7	191543	TEE FITTING 8-NPTF	1
8	191590	FLOW RESTRICTOR 0.032 Orifice	2

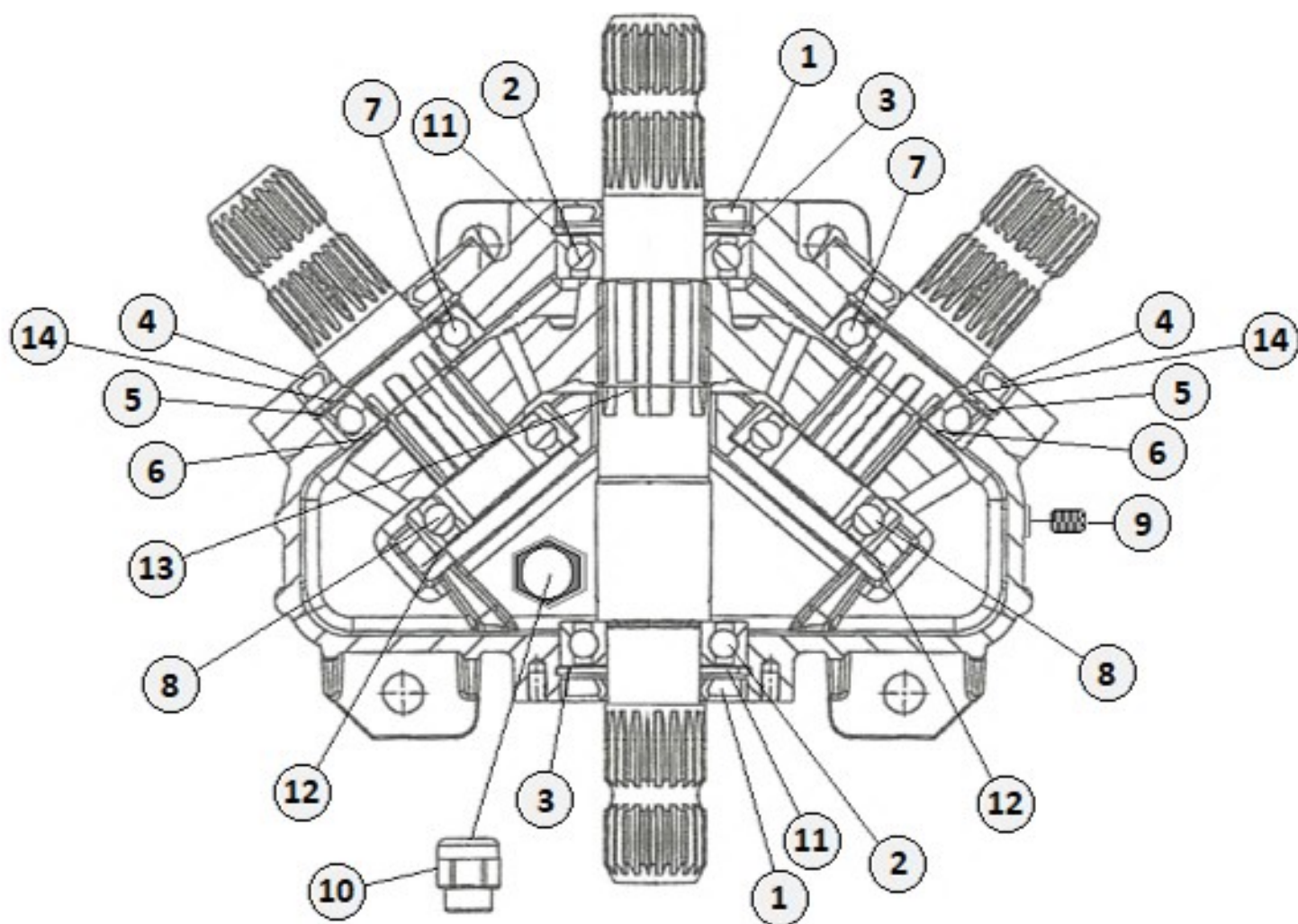
Chain Guard Components



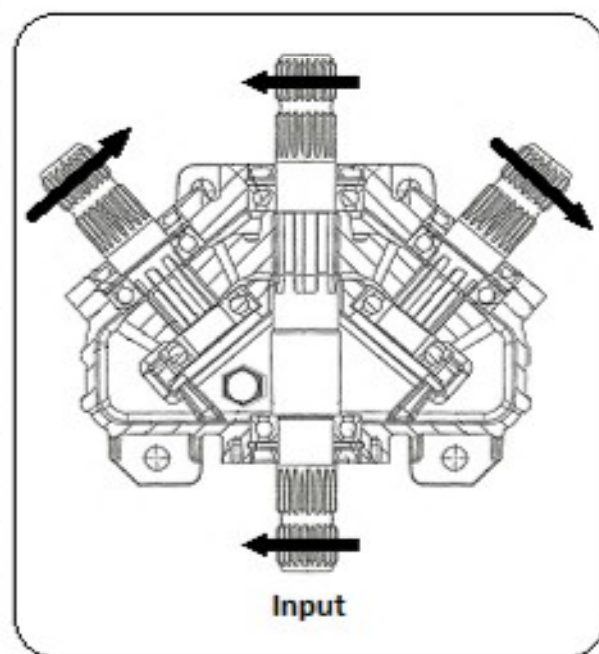
Item	Part #	Description	Qty
1	200028	FRONT CENTER CHAIN GUARD ASSEMBLY	1
2	200029	FRONT LEFT CENTER CHAIN GUARD ASSEMBLY	1
3	200030	FRONT RIGHT CENTER CHAIN GUARD ASSEMBLY	1
4	200031	FRONT WING CHAIN GUARD ASSEMBLY	2
5	200032	REAR WING CHAIN GUARD ASSEMBLY	2
6	200033	REAR WING INNER CHAIN GUARD ASSEMBLY	2
7	200034	REAR CENTER CHAIN GUARD ASSEMBLY	1
8	351519	CARR. BOLT W/LW & LN 1/2" X 1-1/2" Gr.2 (5-Pack)	9
	251520	COMPLETE CHAIN GUARD KIT (FRONT & REAR)	

NOTE: A/R = As Required

540-RPM / 1000-RPM SPLITTER GEARBOX COMPONENTS



Item	Part #	Description	Qty
1	551060	Input Seal 45 x 85 x 10	2
2	551061	Input Bearing 6209 – Thru Shaft	2
3	551062	Snap Ring 85 x 88.5 x 3	2
4	551063	Output Seal 45 x 80 x 10	2
5	551064	Snap Ring 80 x 83.5 x 2.5	2
6	551065	Snap Ring 40 x 37.5 x 2.5	2
7	551066	Bearing 6208	2
8	551067	Bearing 6307	2
9	551068	Check Plug 3/8"	2
10	551069	Breather Plug 1/2"	1
11	551070	Shim Kit 70.3 x 84.7	2
12	551071	Shim Kit 69.0 x 79.9	2
13	551073	Snap Ring 47 x 45.5 x 1.5	1
14	551072	Shim Kit 65.3 x 79.7	2

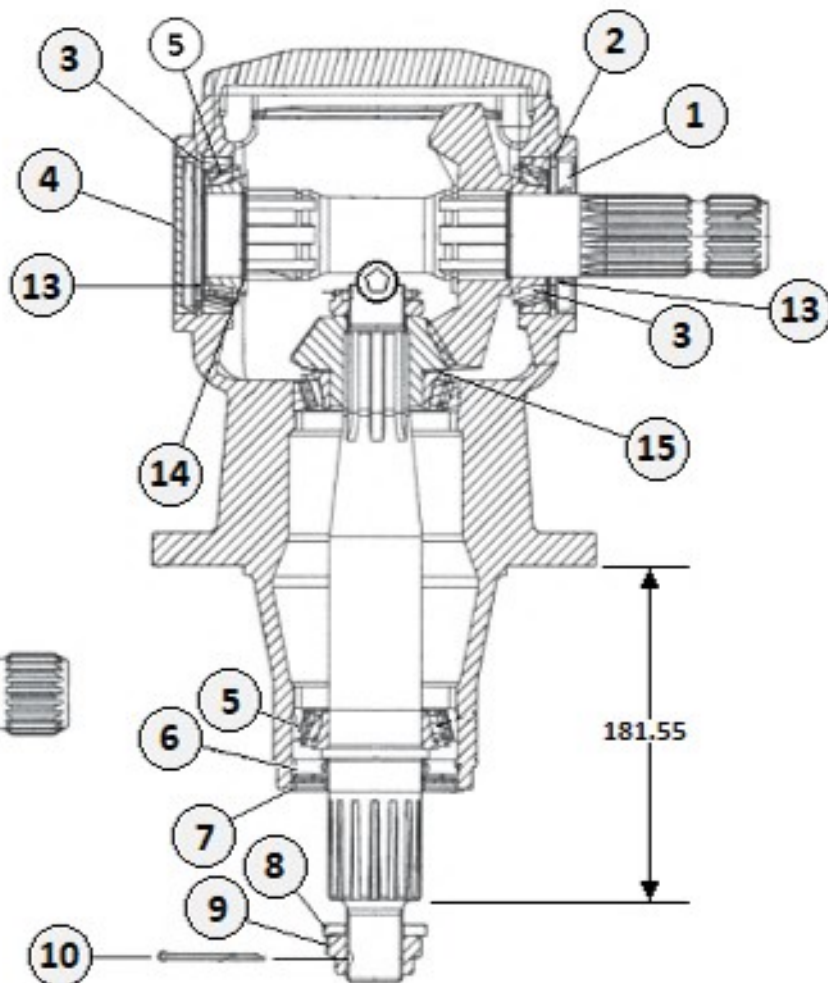
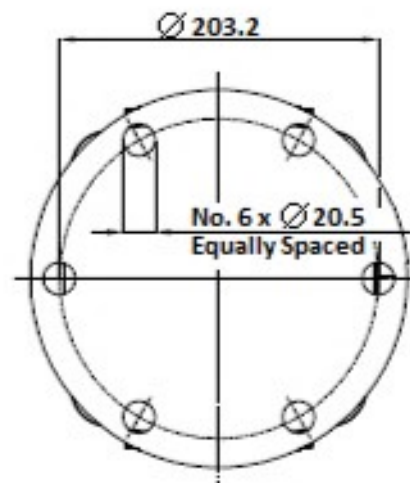
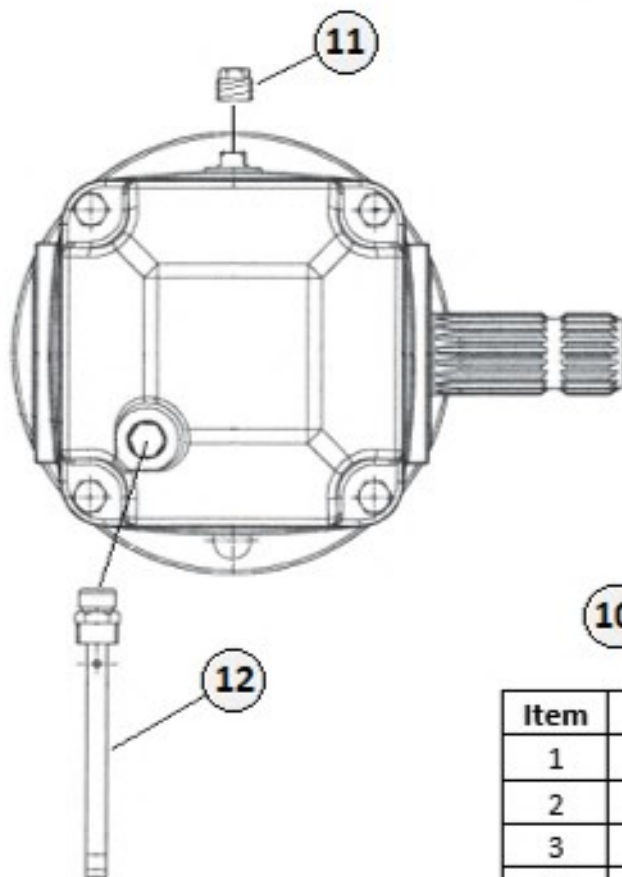


191501 - COMPLETE GEARBOX 540-RPM
191502 - COMPLETE GEARBOX 1000-RPM

140 (ISO 460) Gearoil Recommended
Fill level 61-oz. (1.83-qt)

COMER - OUTBOARD GEARBOX

140 (ISO 460) Gearoil Recommended
86-oz. (2.58-qt)



Item	Part #	Description	Qty
1	551100	Input Seal 45 x 85 10	1
2	551062	Snap Ring 85 x 88.5 x 3	2
3	551101	Bearing 30209	2
4	551102	Oil Cap 85 x 10	1
5	551103	Bearing 30210	2
6	551104	Output Seal 50 x 90 x 10	1
7	551105	Protective Washer	1
8	551106	Flatwasher 31 x 56 x 6	1
9	551107	Castle Nut M30 x 2	1
10	551108	Cotter Pin M6 x 60	1
11	551093	Check Plug 3/8"	1
12	551109	Breather Plug 1/2"	1
13	551110	Shim Kit 70.3 x 84.7	2
14	551111	Shim 45.3 x 65.3 x 2.5	1
15	551112	Shim Kit 50.3 x 70.3	1

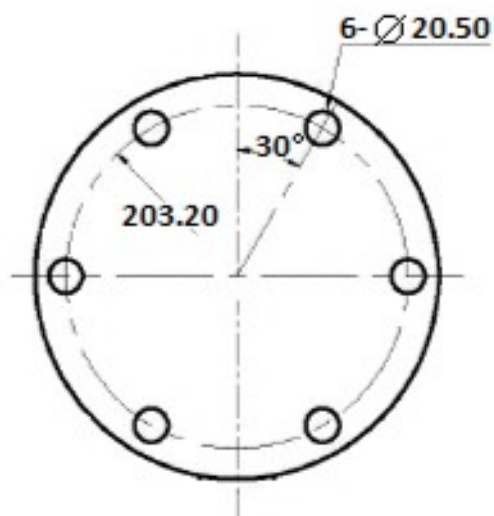
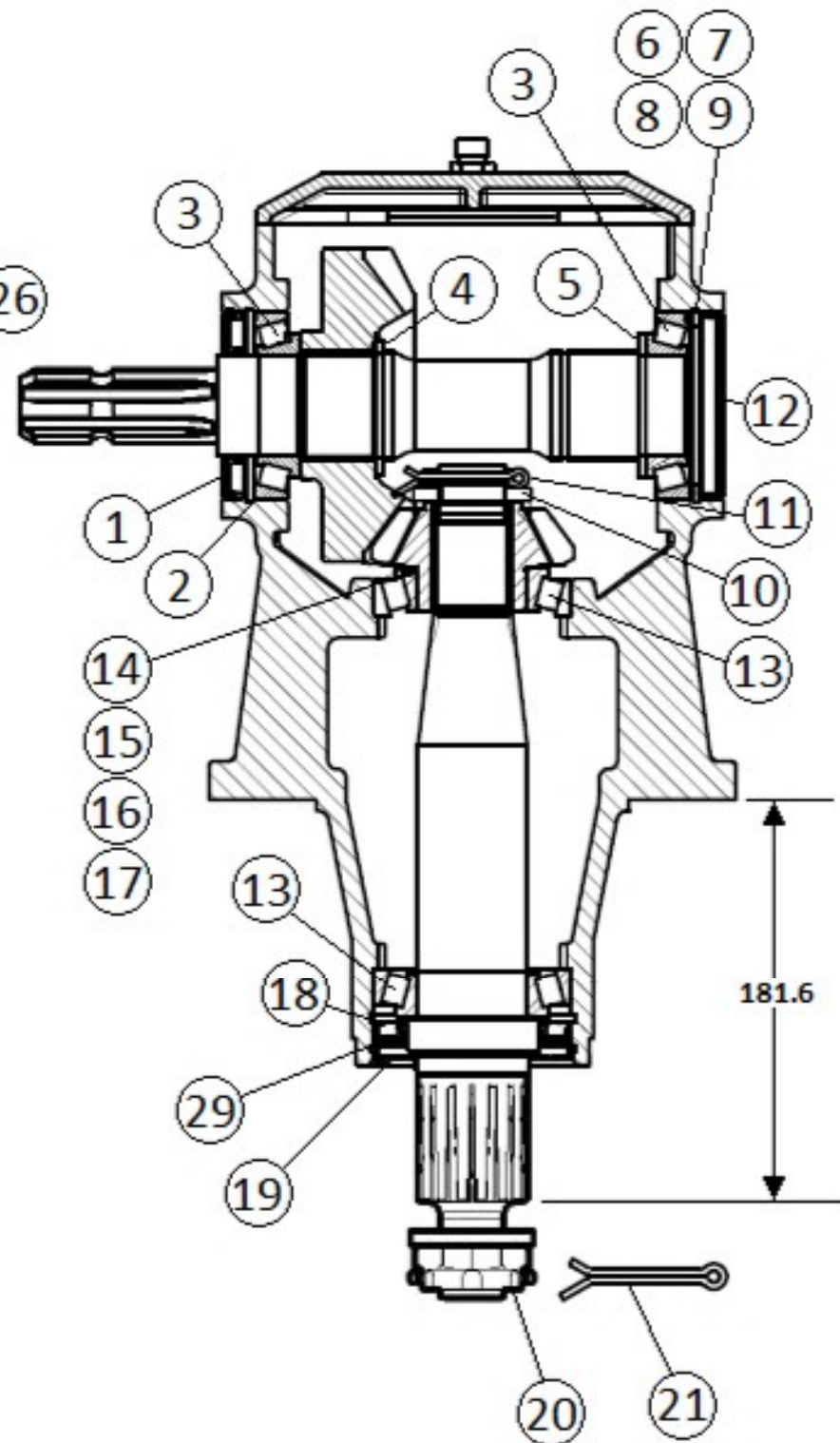
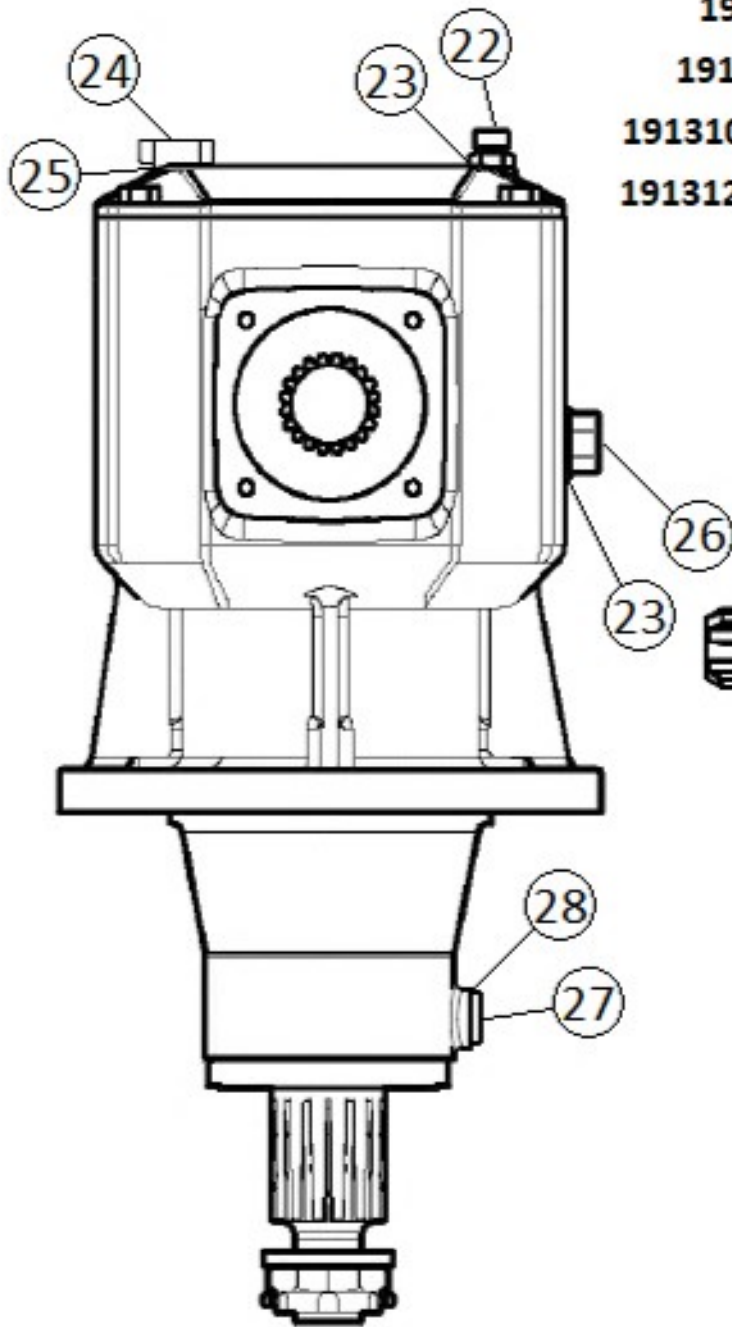
#191508 - Center Deck 540-RPM (9.227.818.00)
 #191509 - Center Deck 1000-RPM (9.227.813.00)
 #191510 - LH Wing 540/1000-RPM (9.227.811.10)
 #191512 - RH Wing 540/1000-RPM (9.227.816.10)

191308 - Center Gearbox 540-RPM (RG75-A)

191309 - Center Gearbox 1000-RPM (RG75-1:1)

191310 - RH Wing Gearbox 540/1000-RPM (RG100-O)

191312 - LH Wing Gearbox 540/1000-RPM (RG100-A)



140 (ISO 460) Gearoil Recommended
116-oz. (3.48-qt)

191308 - Center Gearbox 540-RPM (RG75-A)

191309 - Center Gearbox 1000-RPM (RG75-1:1)

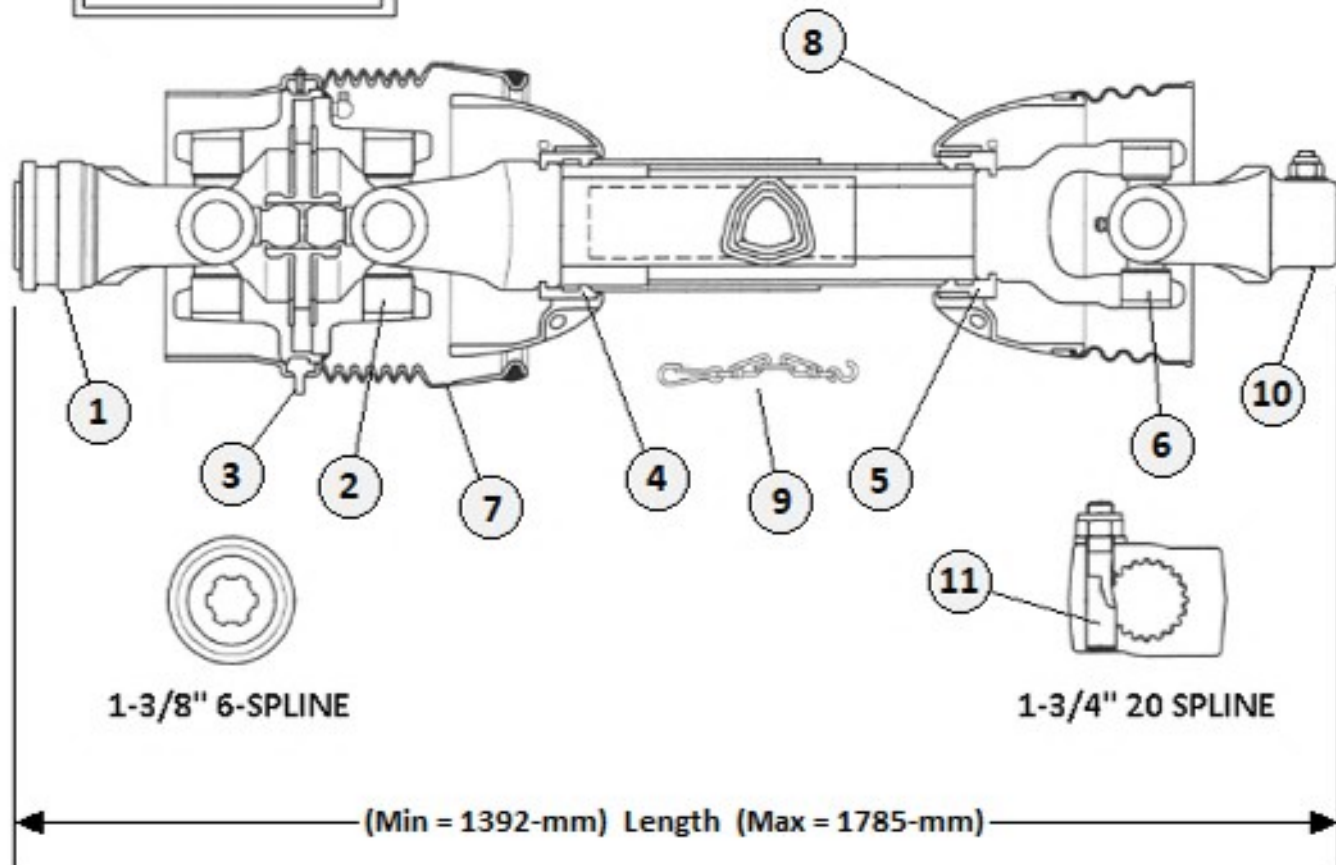
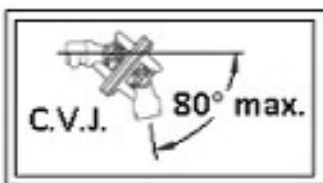
191310 - RH Wing Gearbox 540/1000-RPM (RG100-O)

191312 - LH Wing Gearbox 540/1000-RPM (RG100-A)

Item	Part #	Description	Qty
1	191350	DOUBLE LIP SEAL 45 X 85 X 10	1
2	191351	SNAP RING 85 X 3	2
3	191352	TAPERED ROLLER BEARING 30209	2
4	191353	SNAP RING 50 X 3	1
5	191354	FLAT WASHER 45.3 X 65 X 2.5	1
6	191355	ADJUSTING SHIM 84.5 X 73 X 0.3	4
7	191356	ADJUSTING SHIM 84.5 X 73 X 0.4	4
8	191357	ADJUSTING SHIM 84.5 X 73 X 0.5	2
9	191358	ADJUSTING SHIM 84.5 X 73 X 1	2
10	191359	CASTLE NUT M30 X 1.5	1
11	191360	COTTER PIN 5 X 63	1
12	191361	OIL CAP PLUG 85 X 10	1
13	191362	TAPERED ROLLER BEARING 30210	2
14	191363	ADJUSTING WASHER 50.2 X 61.8 X 0.3	4
15	191364	ADJUSTING WASHER 50.2 X 61.8 X 0.4	4
16	191365	ADJUSTING WASHER 50.2 X 61.8 X 0.5	1
17	191366	ADJUSTING WASHER 50.2 X 61.8 X 1	1
18	191367	SNAP RING 90 X 3	2
19	191368	DUST CAP	1
20	191369	CASTLE NUT M30 X 2	1
21	191370	COTTER PIN 6.3 X 63	1
22	191371	VENT PLUG M16 X 1.5	1
23	191372	PLUG WASHER 16.2 X 19.9 X 1.5	2
24	191373	OIL LEVELER	1
25	191374	OIL LEVELER WASHER	1
26	191375	OIL PLUG M16 X 1.5	1
27	191376	SOLID PLUG – CS HEX 9/16"	1
28	191377	O-RING 11.2 X 2	1
29	191379	DOUBLE LIP SEAL 60 X 90 X 10	1

540-RPM C.V. Driveline Assembly

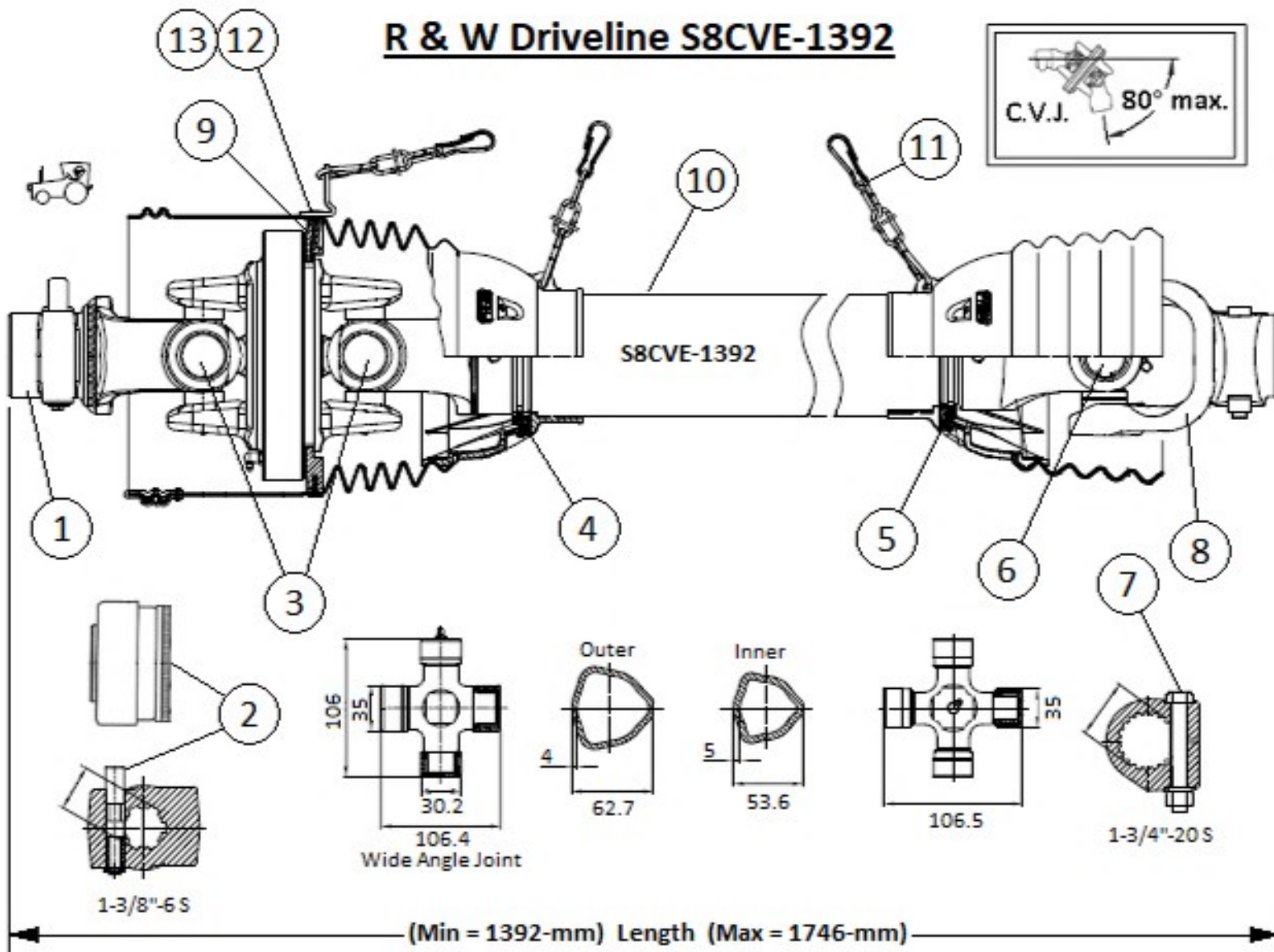
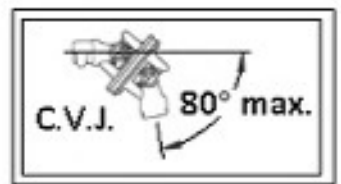
note: This is a Comer Driveline



Item	Part No.	Description	Qty
1	552201	PULL COLLAR KIT (for Tractor Yoke)	1
2	552202	CV CROSS KIT 35 X 113.8	2
3	552203	FIXED RING for C.V. Shield	1
4	552204	OUTER PLASTIC SHIELD BEARING	1
5	552205	INNER PLASTIC SHIELD BEARING	1
6	552206	CROSS KIT 35 X 106.5	1
7	552207	SAFETY SHIELD FOR C.V.	1
8	552208	COMPLETE SAFETY SHIELD	1
9	552209	SAFETY CHAIN	3
10	552210	GEARBOX YOKE 1-3/4"-20	1
11	552211	TAPERED PIN KIT	1

191560 - COMPLETE DRIVELINE

R & W Driveline S8CVE-1392



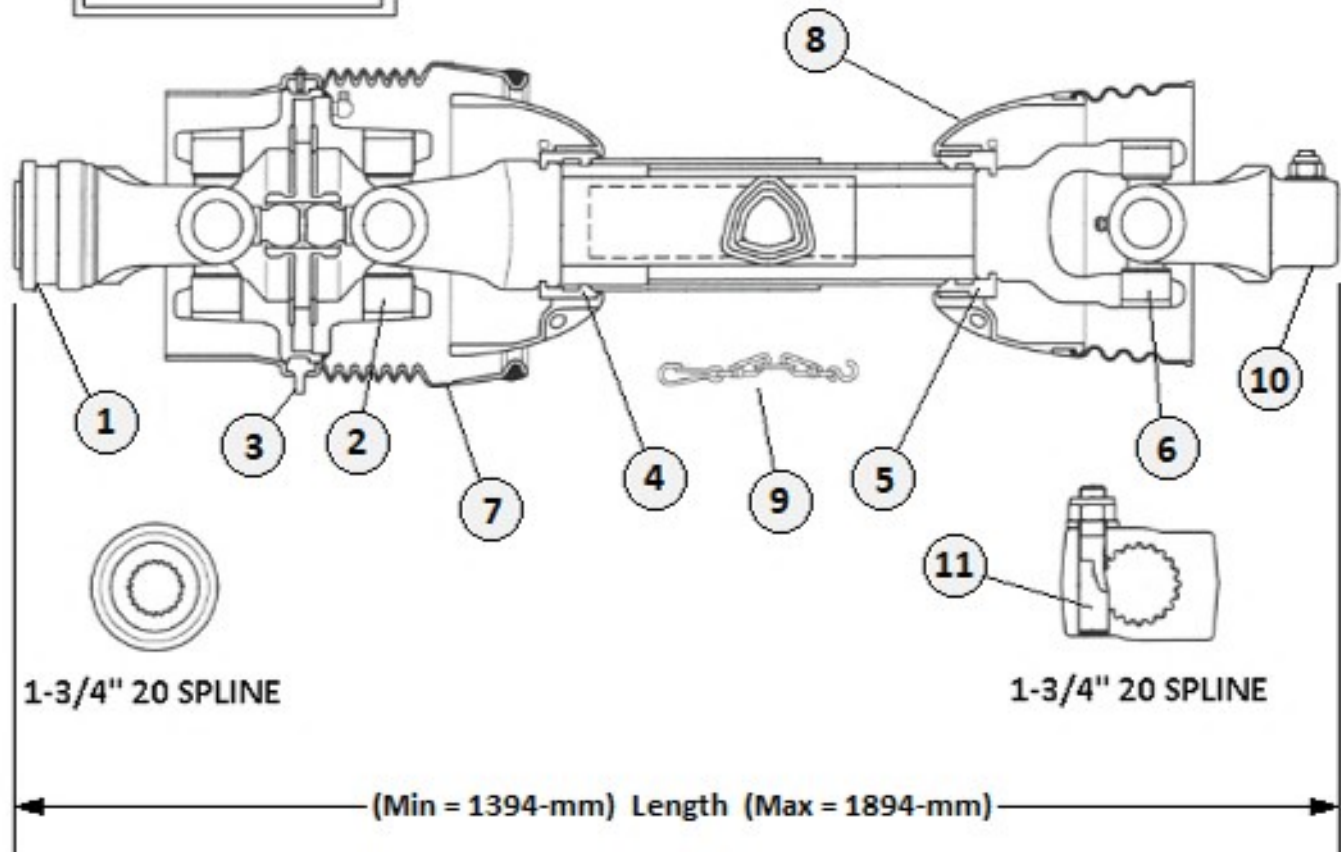
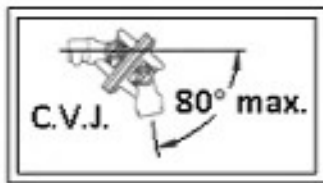
Item	Part #	Description	Qty
1	552156	TRACTOR YOKE W/PUSH PIN – 1-3/8" 6-S	1
2	552157	PUSH PIN KIT	1
	552091	PULL COLLAR KIT (Note: Used on Earlier Models)	A/R
3	552158	CROSS KIT 30.2/106 - 35/106.4	2
4	552159	OUTER PLASTIC SHIELD BEARING	1
5	552160	INNER PLASTIC SHIELD BEARING	1
6	552161	CROSS KIT 35/106.5	1
7	552162	BOLT W/NUT & LOCKWASHER M16 X 90	1
8	552163	GEARBOX YOKE 1-3/4" 20-S	1
9	552164	C.V. SHIELD BEARING	1
10	552165	COMPLETE SHIELD	1
11	552166	SAFETY CHAIN	3
12	552167	CLIP FOR SAFETY CHAIN	1
13	552158	SELF TAPPING SCREW M8 X 16	1

A/R = As Required

191560 - Complete Driveline (540-RPM)

1000-RPM C.V. Driveline Assembly

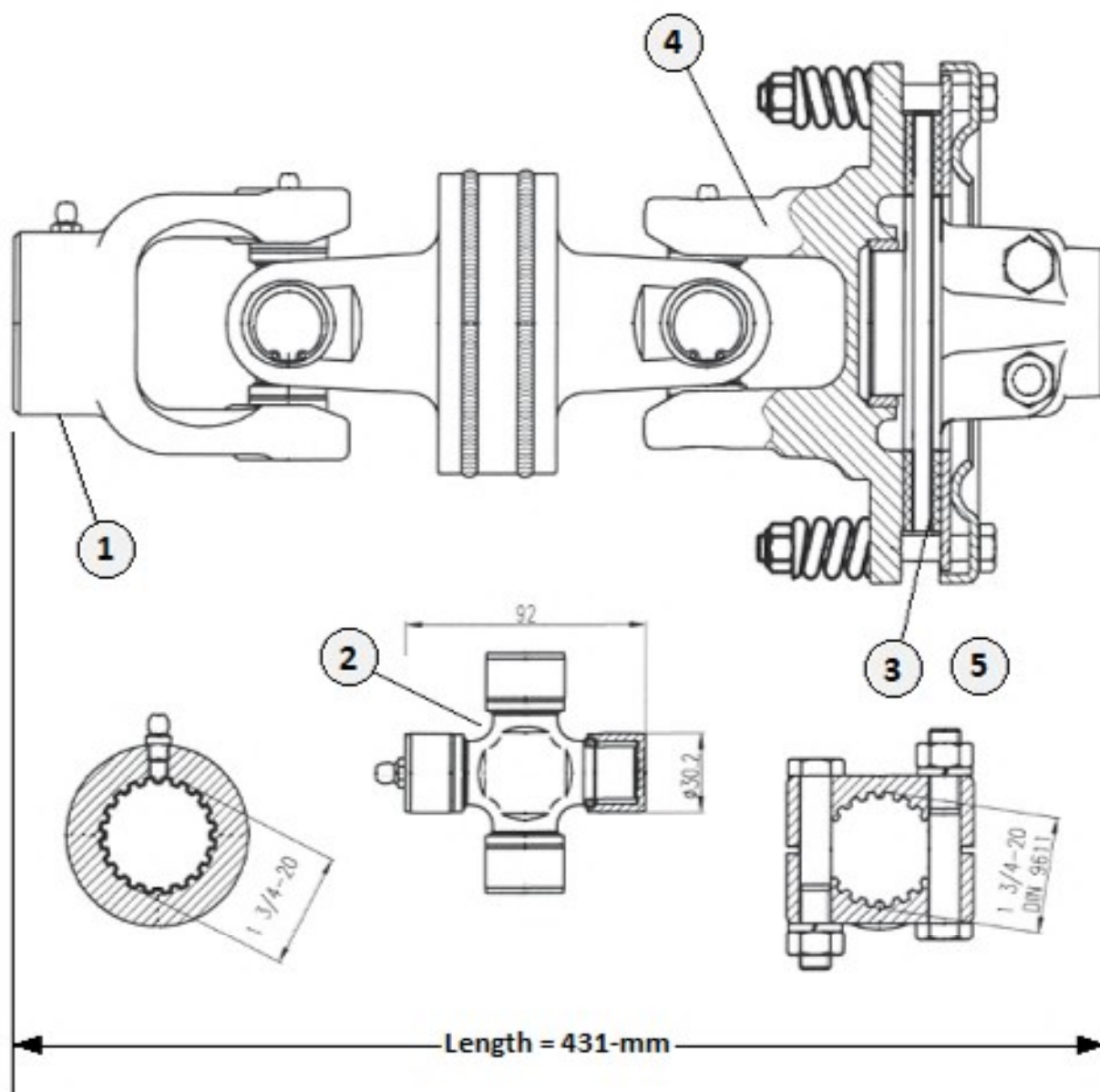
note: this is a Comer driveline



Item	Part No.	Description	Qty
1	552214	PULL COLLAR KIT (for Tractor Yoke)	1
2	552202	CV CROSS KIT 35 X 113.8	2
3	552203	FIXED RING for C.V. Shield	1
4	552204	OUTER PLASTIC SHIELD BEARING	1
5	552205	INNER PLASTIC SHIELD BEARING	1
6	552206	CROSS KIT 35 X 106.5	1
7	552207	SAFETY SHIELD FOR C.V.	1
8	552208	COMPLETE SAFETY SHIELD	1
9	552209	SAFETY CHAIN	3
10	552210	GEARBOX YOKE 1-3/4"-20	1
11	552211	TAPERED PIN KIT	1

191563 - COMPLETE DRIVELINE

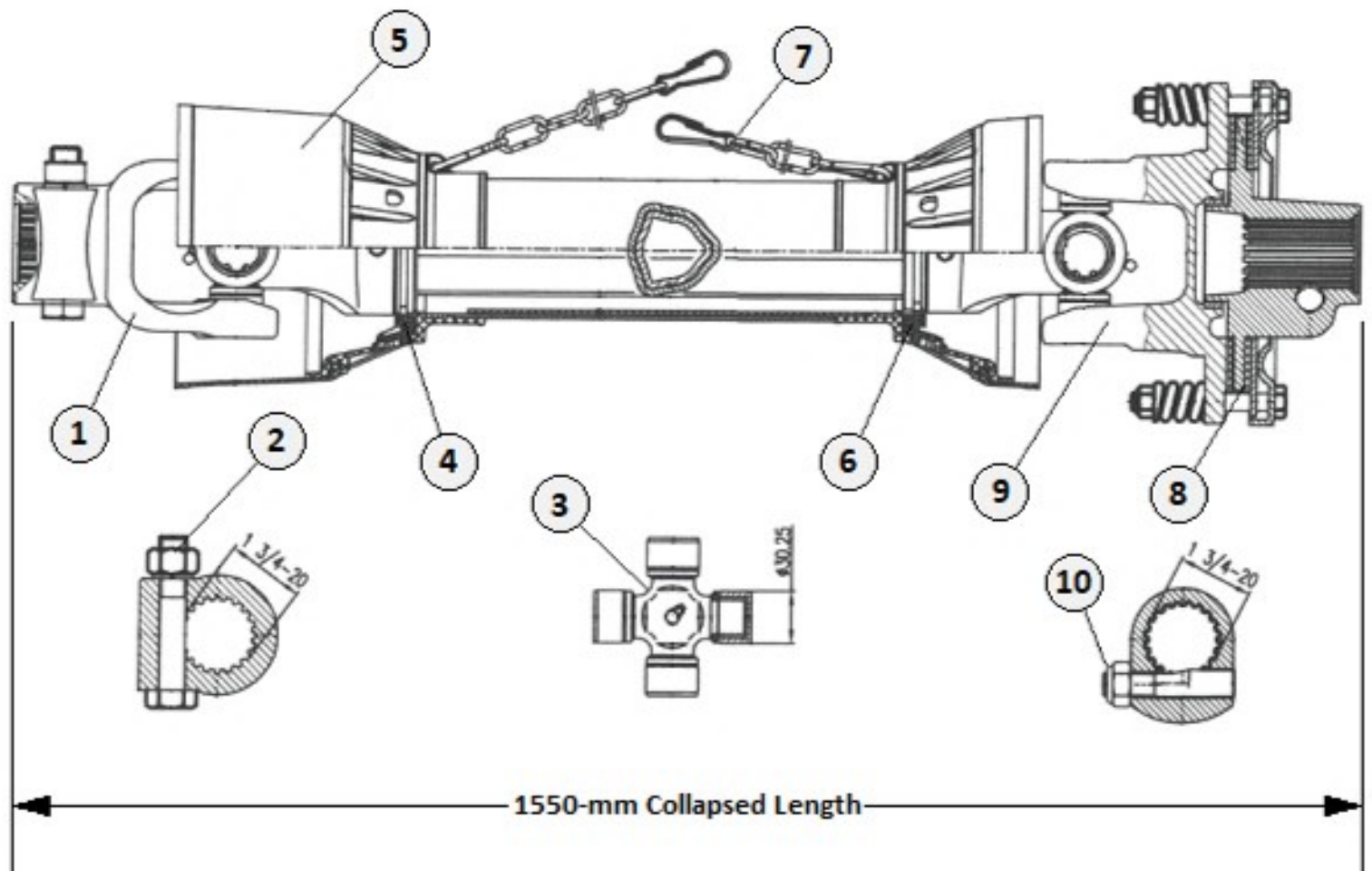
Center Deck Driveline Assembly



Item	Part No.	Description	Qty
1	552100	GEARBOX YOKE 1-3/4"-20	1
2	552101	CROSS KIT 30.2 X 92	2
3	552102	CLUTCH LINING (2-Pack)	1
4	552103	COMPLETE SLIPCLUTCH 1-3/4"-20	1
5	552104	CLAMP BOLT	1

191506 - COMPLETE DRIVELINE

Wing Driveline Assembly



Item	Part No.	Description	Qty
1	552110	YOKE 1-3/4"	1
2	552111	LOCK BOLT KIT	1
3	552112	CROSS KIT 30.2 X 92	2
4	552113	OUTER PLASTIC SHIELD BEARING	1
5	552114	COMPLETE SAFETY SHIELD	1
6	552115	INNER PLASTIC SHIELD BEARING	1
7	552005	SAFETY CHAIN	2
8	552116	CLUTCH LINING (2-Pack)	1
9	552117	COMPLETE SLIPCLUTCH	1
10	552118	LOCK BOLT KIT	1

191561 - COMPLETE DRIVELINE