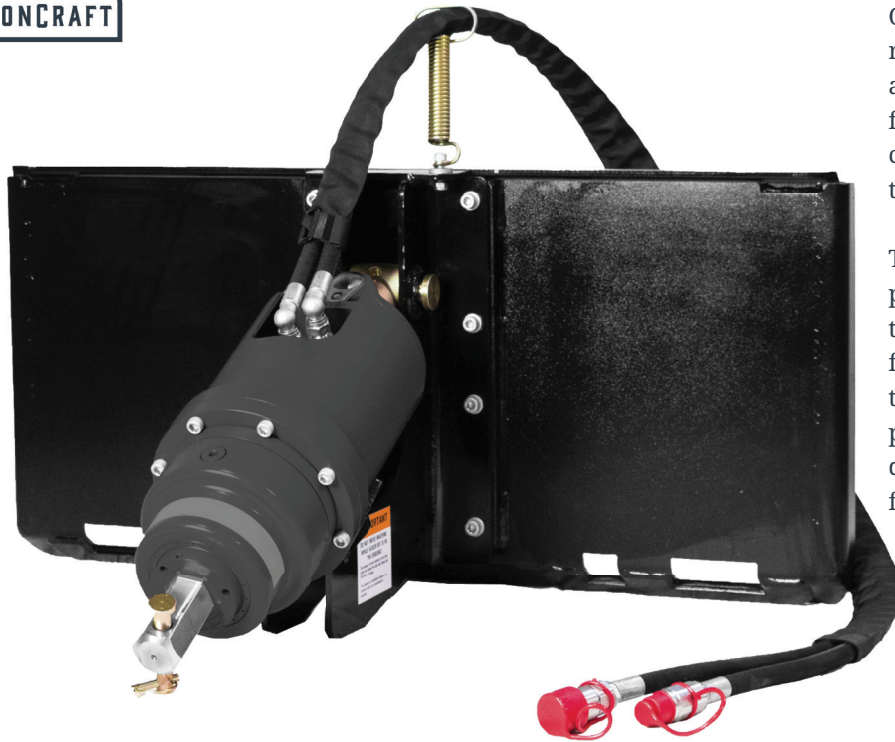




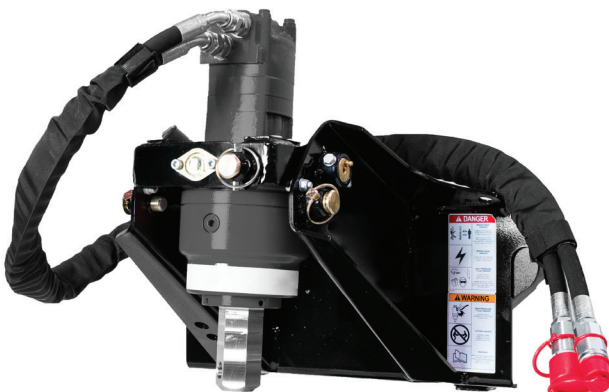
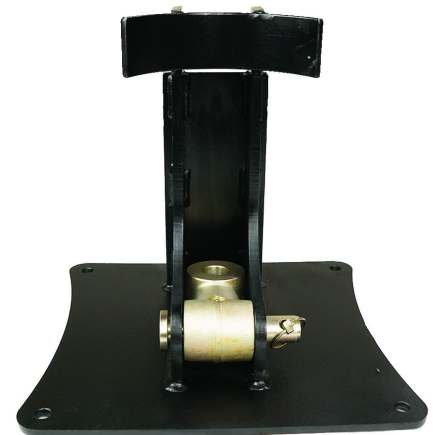
AUGER ATTACHMENT



One of our most popular and highest reviewed attachments, the Auger Drive is available in 3 sizes for skid steers, 2 sizes for mini skid steers, and excavators and is compatible with auger bits and accessories that have 2" hex output shafts.

These skid steer augers features a superior planetary drive system, specifically designed to address the common issue of shaft pullout found in other systems. The gearbox, where the shaft attaches, incorporates a large thrust plate that securely locks the shaft in place, distributing weight evenly and preventing it from falling out.

	SKID STEER 2500	SKID STEER 3500	SKID STEER 4500
WEIGHT (DRIVE ONLY)	135 lbs.	140 lbs.	140 lbs.
FLOW RANGE	7-17 GPM	10-25 GPM	13-30 GPM
MAX BIT SIZE	30"	36"	36"
SPEED RANGE	36-87 RPM	40-100 RPM	42-97 RPM
TORQUE @ 3.500 PSI	2,100 ft-lbs.	2,680 ft-lbs.	3,350 ft-lbs.



	MINI ML-2500	MINI ML-3500
FLOW RANGE	7 - 17 GPM	10 - 25 GPM
TORQUE @ 3.000 PSI	1,800 Ft-lbs.	2,300 Ft-lbs.
MAX PRESSURE	3,600 PSI	3,600 PSI
OUTPUT SHAFT	2" Hex	2" Hex

AUGER ACCESSORIES



STUMP PLANER

Available in both 10" and 14" diameters, the Auger Stump Planer allows operators to shave stumps down below grade for the fraction of the cost of a dedicated grinder. Featuring replaceable blades and pilot bit.



	10"	14"
CUTTING DEPTH	18"	18"
CUTTING TEETH	3 Blade Tool Steel Sharpenable Blades	3 Blade Tool Steel Sharpenable Blades
DRIVE HUB	2" Hex	2" Hex Multi-Hole
MIN. TORQUE REQUIREMENT	2,200 ft-lbs	3,300 ft-lbs
WEIGHT	60 lbs.	90 lbs.

	CEMENT MIXER
WEIGHT	85 lbs.
BOWL VOLUME	47 gal.
MAXIMUM CAPACITY	4 cu. ft.
DRIVE BASE	2" Hex



CEMENT MIXING BOWL

Available for all 3 auger drive sizes, the concrete mixing bowl is great for small to medium size slabs and other projects. Capacity is 4 cubic feet. This accessory can only be run when the auger drive is mounted with the Auger Flip Mount.

AUGER BITS

These Auger Bits use thick walled steel tubing and heavy duty cast drive heads to handle tough earth conditions. Available in sizes from 4" to 36" with options for standard or tungsten carbide auger teeth.



	EARTH AUGER BITS
FLIGHTING SIZE	1/4"
DIAMETERS AVAILABLE	4", 6", 9", 12", 18", 24", 30", 36"
DRIVE HUB	2" Hex
TEETH	Shock Lock Drop Forged Dirt
LENGTH	48"
TUBE WALL THICKNESS	3/8"
PILOT	Forged - Dirt Style
LENGTH	3"

OTHER ACCESSORIES

Another common accessory to pair with these Auger Drives is the **Spiral Log Splitter Cone** which allows you to split and transport logs. **Auger Adapters** and **Auger Extensions** are available as well, providing a ton of flexibility and the ability to extend the depth of your auger bits.