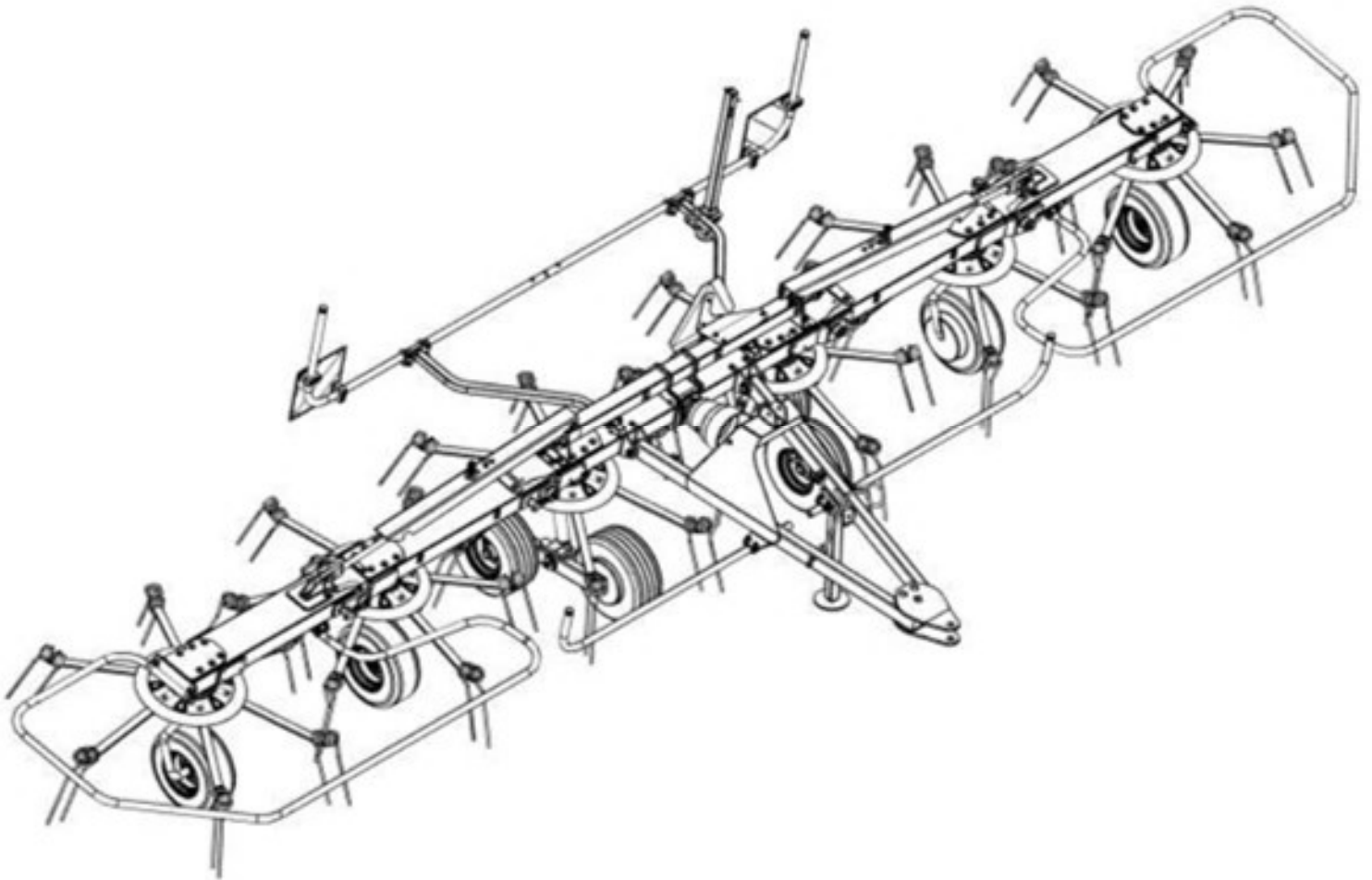


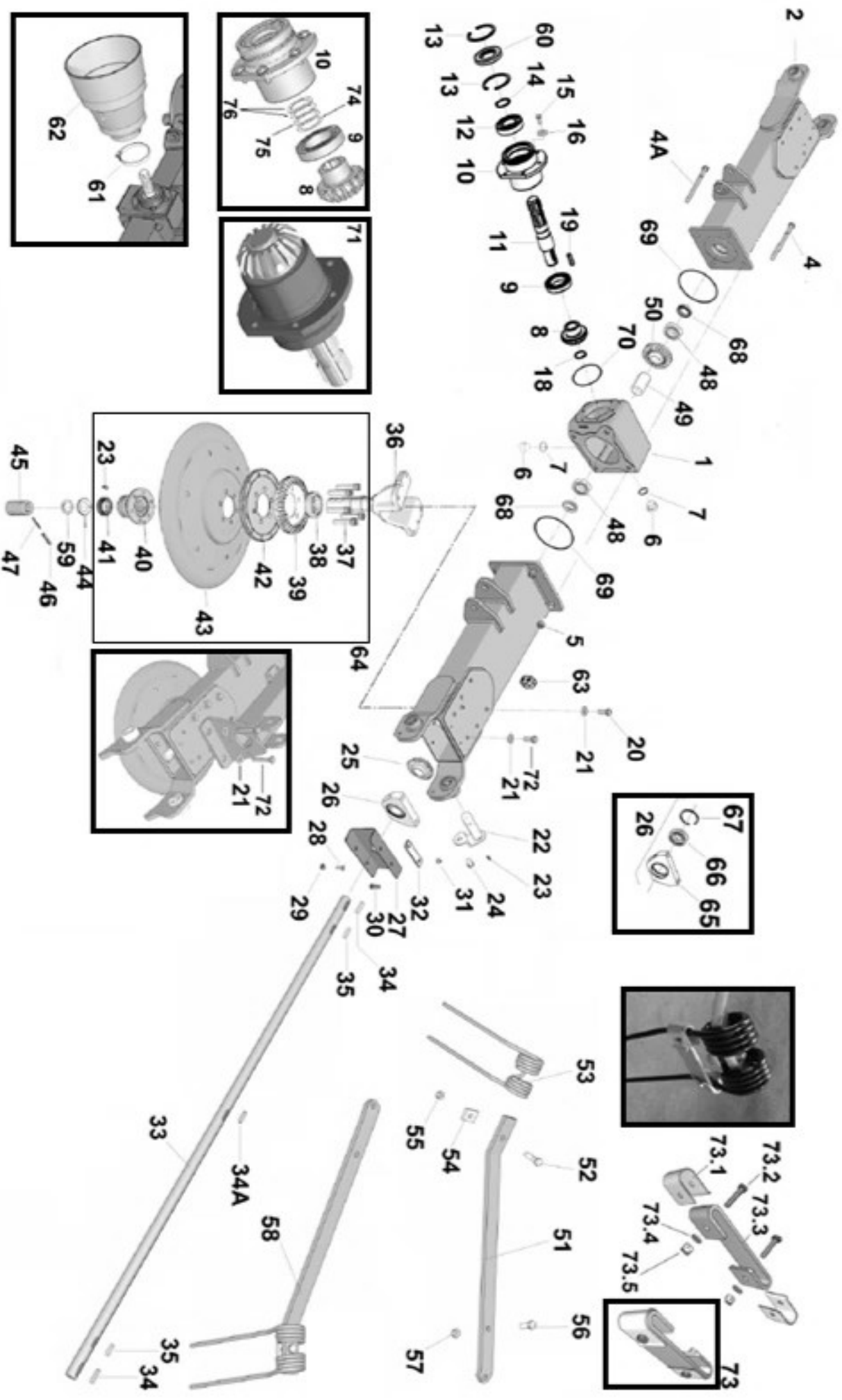


# HAY TEDDER T624 Series



## PARTS MANUAL

**(Table 1.1) T624 Series**

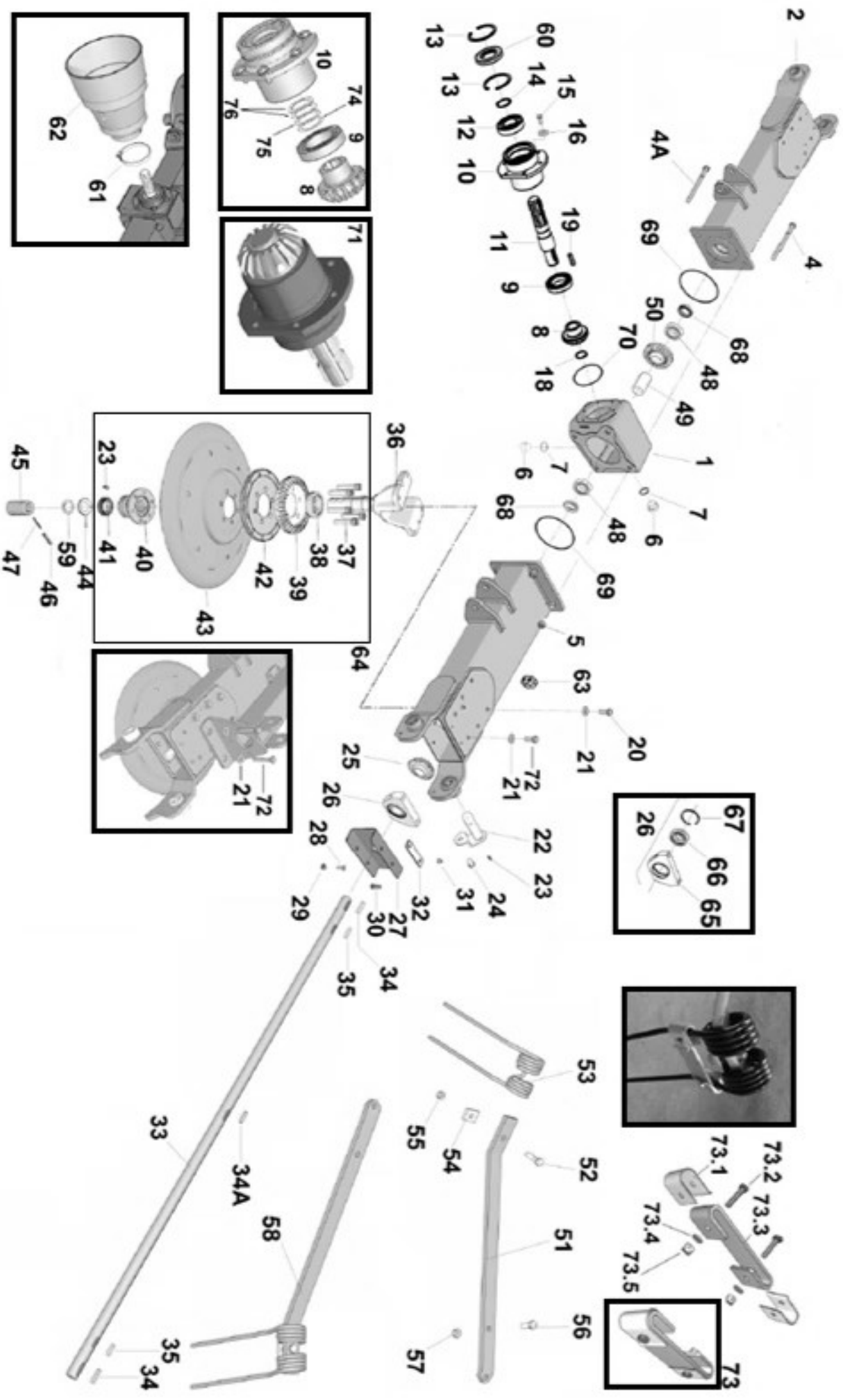


## (Table 1.1) T624 Series

Item	Part No.	Description
1	EN18033776	HAY TEDDER GEARBOX
2	EN18035615	LH CENTRAL ARM
3	EN18035614	RH CENTRAL ARM
4	EN3010814	HH SCREW M14 X 190
4A	EN3010813	HH SCREW M14 X 170
5	EN3020203	SELF LOCKING NUT M14
6	EN4010816	PIPE PLUG 3/4"
7	EN3030409	WASHER 3/4"
8	EN8010302	BEVEL PINION FOR CENTRAL BOX
9	EN12240190	BEARING 6009 2RS
10	EN18035940	SLEEVE
11	EN12320301	PTO SHAFT
12	EN12240146	BEARING 7207 B
13	EN3120105	SNAP RING Int. 72mm
14	EN3120102	SNAP RING Ext. 35mm
15	EN3010294	HH SCREW M8 X 20
16	EN3030802	WASHER M12 S.E.
17	*NA	(Intentionally left blank)
18	EN3120101	SNAP RING Ext. 30mm
19	EN3110003	TAB 8 X 7 X 40
20	EN3010230	HH SCREW M12 X 40
21	EN3030800	WASHER M12 S.E.
22	EN18033491	PIN 30mm L-119mm
23	EN3090101	GREASE ZERK M8 X 1
24	EN3011268	HH SCREW M12 X 20
25	EN8010303	BEVEL PINION FOR ROTOR
26	EN18033601	COMPLETE DRAFT SUPPORT
27	EN18037257	CENTRAL CLOSING HOUSING
28	EN3010250	HH SCREW M8 X 16
29	EN3020302	NUT M8

NA = Not Applicable

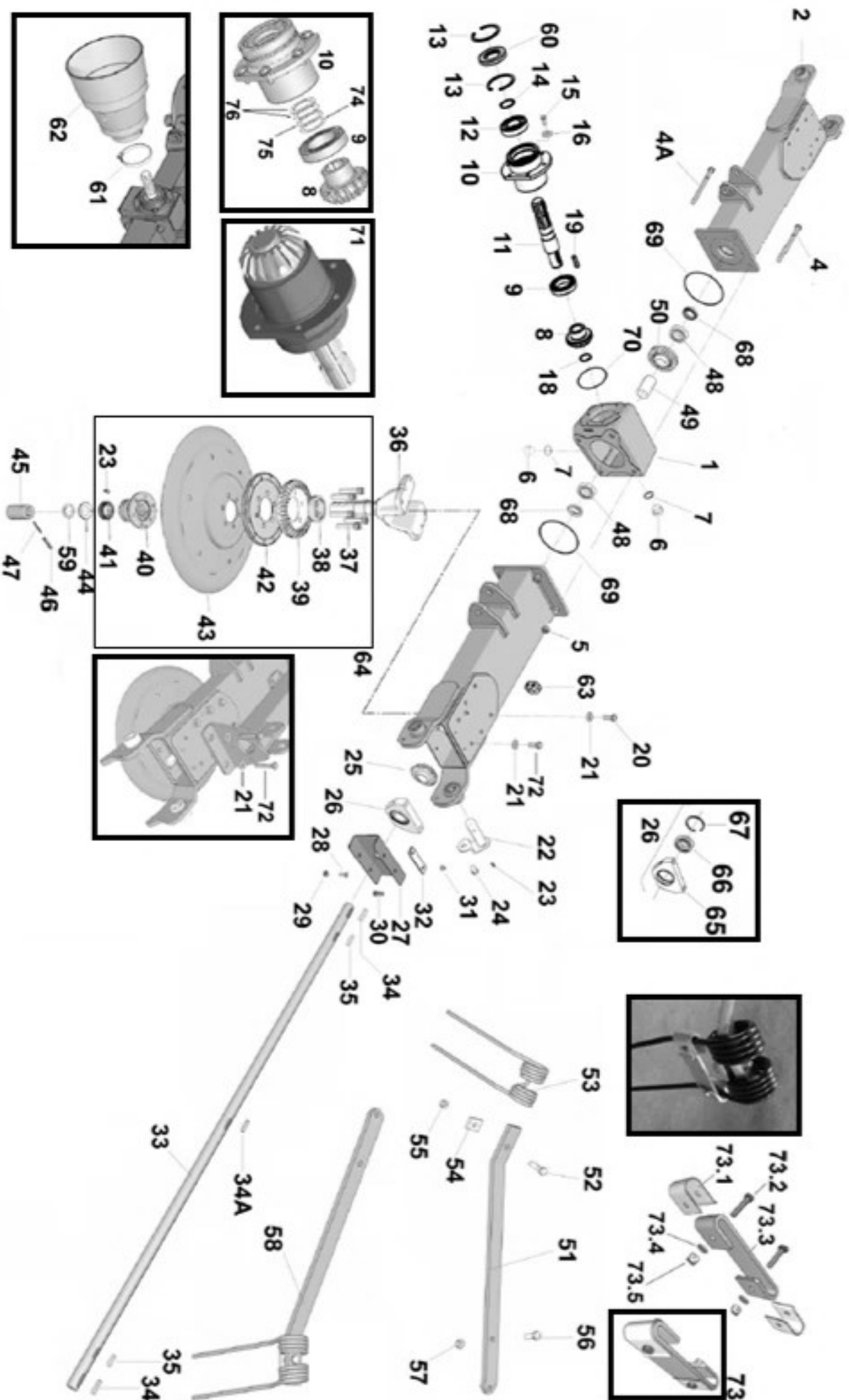
**(Table 1.2) T624 Series**



**(Table 1.2) T624 Series**

<b>Item</b>	<b>Part No.</b>	<b>Description</b>
30	EN3010780	HH SCREW M8 X 30
31	EN3020209	SELF LOCKING NUT M8
32	EN18033544	PLATE
33	EN18033764	CENTRAL DRIVE AXLE Dia. 30mm L-1634mm
34	EN3110002	TAB 8 X 7 X 35
34A	EN18037523	TEMPERED TAB 8 X 7 X 35
35	EN3110008	TAB 8 X 7 X 30
36	EN18034227	CENTRAL PIN WITH BRACKET
37	EN3010605	HSHC SCREW M12 X 55
38	EN12240109	BEARING 6207
39	EN18031169	BEVEL CROWN FOR ROTOR
40	EN18031171	SAFETY LOOP
41	EN12240160	BEARING 32007A
42	EN18033532	PROTECTION SCREEN
43	EN18037203	ARM CONNECTION FLANGE
44	EN10011315	NILOS RING 32007AV
45	EN18034211	BUSHING Dia. 54mm X 106
46	EN3080141	ELASTIC PIN 10 X 55
47	EN3080142	ELASTIC PIN 6 X 55
48	EN12240108	BEARING 6206 2RS
49	EN12070330	SPACER 42 X 8 X 74
50	EN8010304	CROWN FOR CENTRAL BOX
51	EN18034998	ARM
52	EN3011297	HH SCREW M12 X 45
53	EN18030616	TINE
54	EN18030627	SPRING CLAMP
55	EN3020202	SELF LOCKING NUT M12
56	EN3011215	HH SCREW M12 X 40
57	EN3020202	SELF LOCKING NUT M12
58	EN18034997	RH COMPLETE ARM
58A	EN18034999	LH COMPLETE ARM
59	EN3120126	AXIAL WASHER PS 35 X 52 X 0.5

**(Table 1.3) T624 Series**

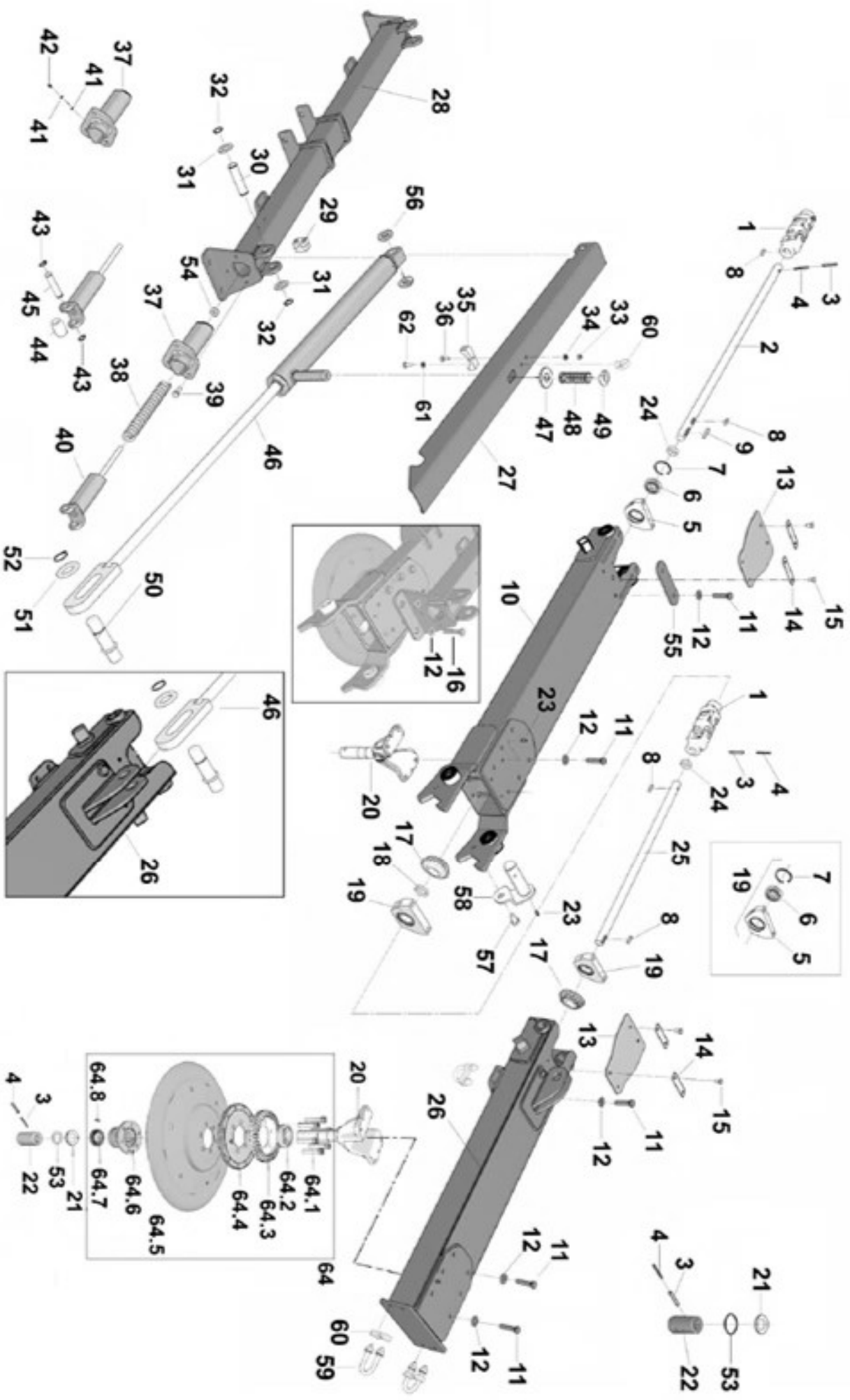




**(Table 1.3) T624 Series**

<b>Item</b>	<b>Part No.</b>	<b>Description</b>
60	EN12260003	OIL SEAL ATG 1-723510
61	EN4010702	BAND
62	EN9070101	COVER
63	EN18033216	COLLAR C3
64	EN43902139	FLANGE NUT
65	EN18033702	SUPPORT SHAFT
66	EN12240108	BEARING 6206 2RS
67	EN3120108	SNAP RING Int. 62mm
68	EN12260002	OIL SEAL ATG 1 (55 X 30 X 10)
69	EN10010702	O-RING 2.255 (142.5 X 3.53)
70	EN10010741	O-RING 2154 (94.92 X 2.62)
71	EN18035955	TRANSMISSION UNIT
72	EN3011660	HH SCREW M12 X 60
73	EN18030644	TINE SAVER KIT
73.1	*NA	METALLIC TIE (Use EN18030644)
73.2	*NA	HH SCREW M6 X 30 (Use EN18030644)
73.3	*NA	PVC TIE (Use EN18030644)
73.4	*NA	WASHER M6 (Use EN18030644)
73.5	*NA	SELF LOCKING NUT M6 (Use EN18030644)
74	EN3030217	AXIAL WASHER PS 30 X 42 X 0.5
75	EN3030276	AXIAL WASHER PS 30 X 42 X 0.3
76	EN3030277	AXIAL WASHER PS 30 X 42 X 0.1

**(Table 2.1) T624 Series**

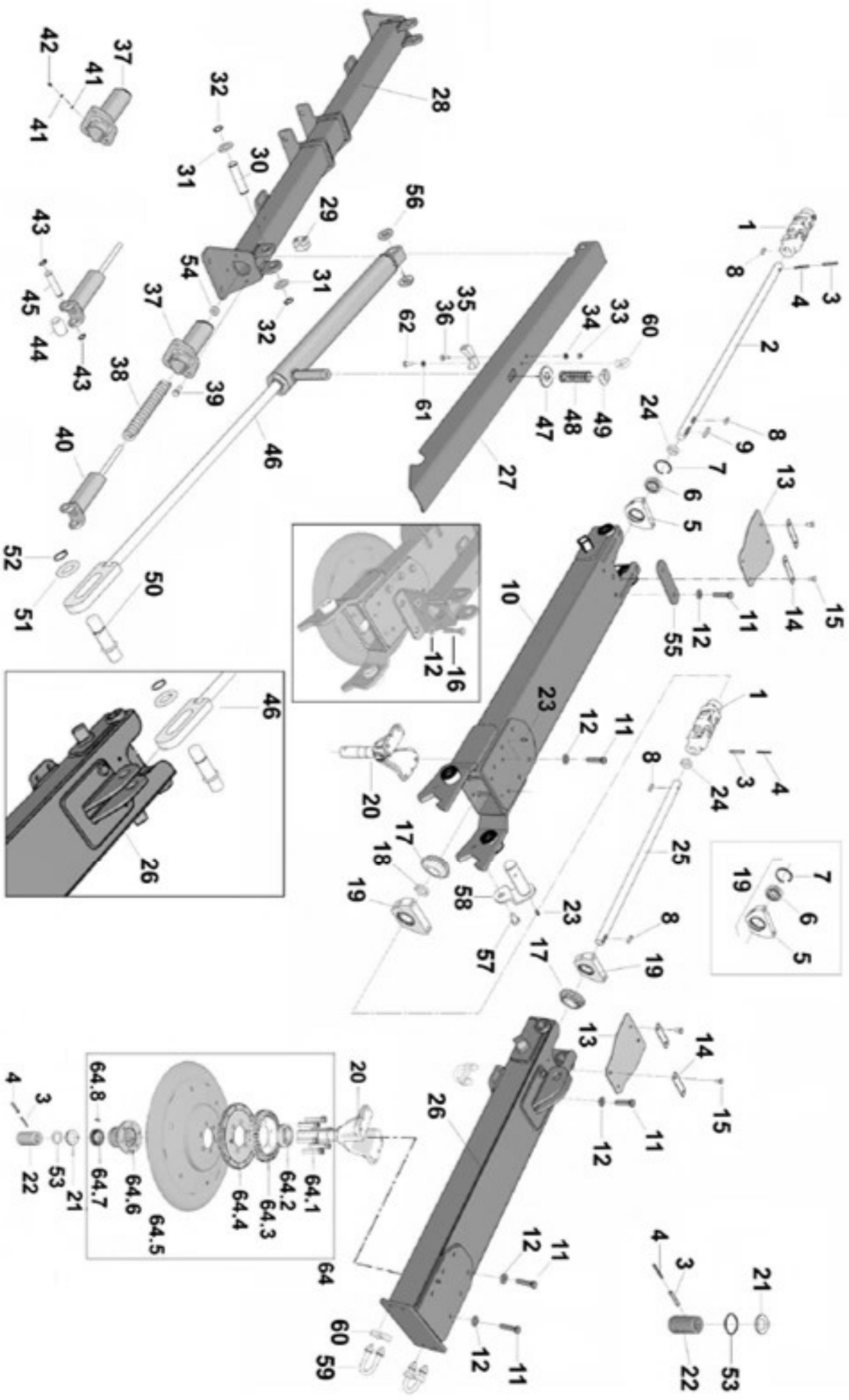




**(Table 2.1) T624 Series**

<b>Item</b>	<b>Part No.</b>	<b>Description</b>
1	EN18034239	DOUBLE JOINT
2	EN18033767	LATERAL DRIVE AXLE Dia. 30mm L-1020mm
3	EN3080141	ELASTIC PIN 10 X 55
4	EN3080142	ELASTIC PIN 6 X 55
5	EN18033702	SUPPORT SHAFT
6	EN12240108	BEARING 6206 2RS
7	EN3120108	SNAP RING Int. 62mm
8	EN3110008	TAB 8 X 7 30
9	EN3110033	TAB 8 X 7 X 45
10	EN18035616	LATERAL ARM
11	EN3010230	HH SCREW M12 X 40
12	EN3030800	WASHER M12 S.E.
13	EN9170006	DUST COVER CUP
14	EN18033544	PLATE
15	EN3011221	HH SCREW M8 X 16
16	EN3011660	HH SCREW M12 X 60
17	EN8010303	BEVEL PINION FOR ROTOR
18	EN18033911	SPACER 42 X 30 X 6
19	EN18033601	COMPLETE DRAFT SUPPORT
20	EN18034226	CENTRAL PIN WITH BRACKET
21	EN10011315	NILOS RING 32007 AV
22	EN18032308	BUSHING Dia. 30mm X 106mm
23	EN3090101	GREASE ZERM M8 X 1
24	EN18033703	SPACER 42 X 30 X 9
25	EN18033769	AXLE DRIVE Dia. 30mm X 768mm
26	EN18033768	LATERAL FRAME ARM
27	EN18033780	LOCKING FRAME
28	EN18033765	CROSSPIECE 3-Point HITCH
29	EN18033216	COLLAR C3
30	EN18033783	PIN Dia. 25mm X 104mm
31	EN3030198	FLATWASHER M24
32	EN3120127	SNAP RING Ext. 25mm

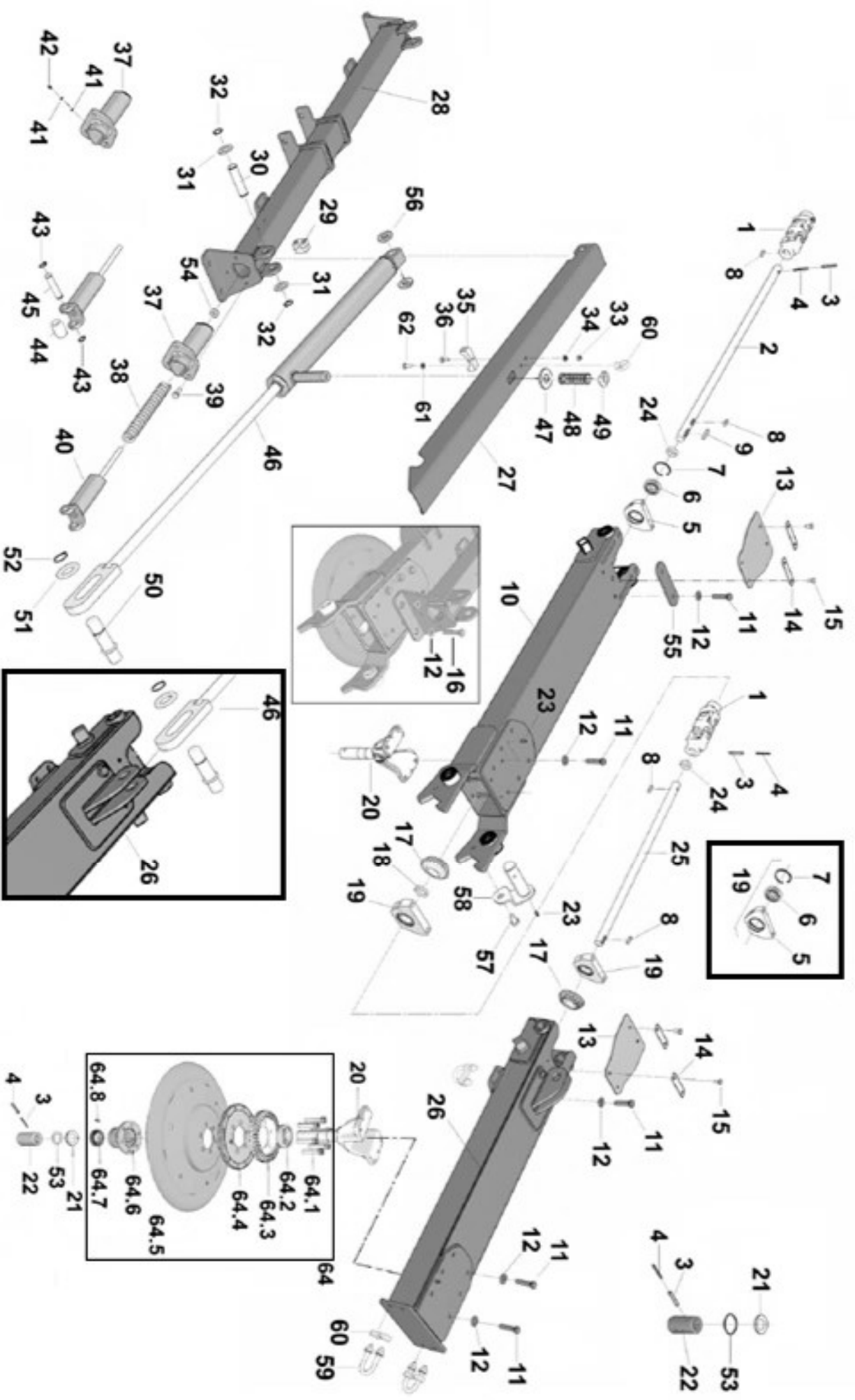
**(Table 2.2) T624 Series**



**(Table 2.2) T624 Series**

<b>Item</b>	<b>Part No.</b>	<b>Description</b>
33	EN3020209	SELF LOCKING NUT M8
34	EN3030156	FLATWASHER M8
35	EN12061030	CYLINDER STOP Dia. 60mm
36	EN3010793	HSCH BOLT M8 X 25
37	EN18033787	SHAFT SEAT
38	EN11010642	SPRING
39	EN3011211	HH SCREW M10 X 25
40	EN18033788	SLIDING SHAFT
41	EN3030158	FLAT WASHER M6
42	EN3090102	GREASE ZERK M6 X 1
43	EN3120128	SNAP RING Ext. 16mm
44	EN18032373	ROLLER
45	EN18033704	CYLINDER PIN Dia. 16mm X 72mm
46	EN18034348	HYDRAULIC CYLINDER
47	EN18034210	FLATWASHER 50 X 22 5
48	EN11010906	SPRING Dia. 27mm L-78mm
49	EN18033542	STOP FRAME
50	EN18033782	PIN
51	EN3030165	FLATWASHER M30
52	EN3120101	SNAP RING Ext. 30mm
53	EN3120126	AXIAL WASHER PS 355205
54	EN3020202	SELF LOCKING NUT M12
55	EN1015143	SHEET STRAP
56	EN18033784	FLATWASHER Dia. 50mm
57	EN3011268	HH SCREW M12 X 20
58	EN18033491	PIN
59	EN3070118	U-BOLT M10
60	EN12881497	BASE COLLAR
61	EN3210108	EYEBOLT M8
62	EN3011251	HH SCREW M8 X 20
63	EN3030805	FLATWASHER M8

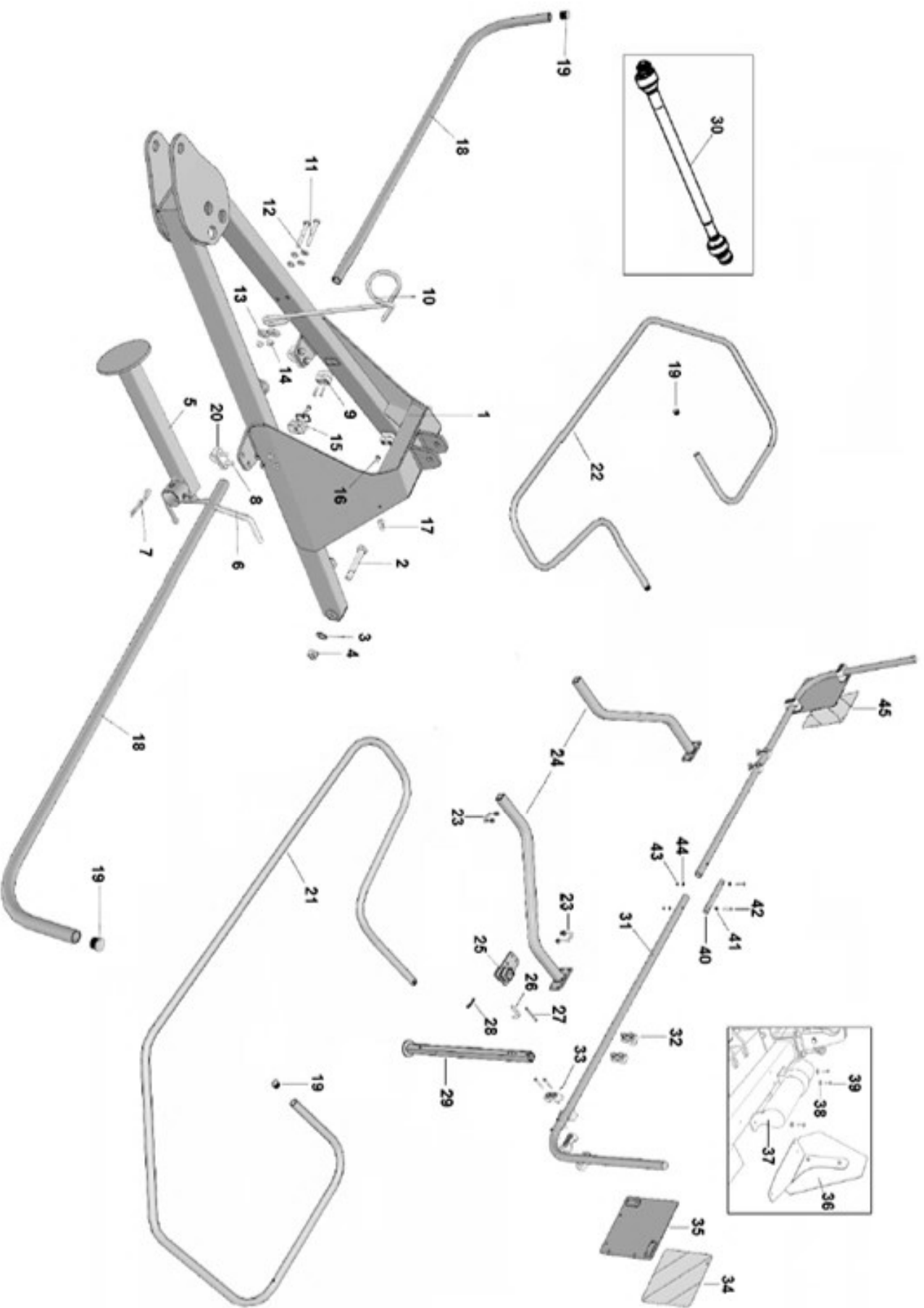
**Table 2.3) T624 Series**



**(Table 2.3) T624 Series**

<b>Item</b>	<b>Part No.</b>	<b>Description</b>
64	EN43902139	FLANGE UNIT
64.1	EN3010605	HSHC SCREW M12 X 55
64.2	EN12240109	BEARING 6207
64.3	EN18031169	BEVEL CROWN FOR ROTOR
64.4	EN18033532	PROTECTION SCREEN
64.5	EN18037203	ARM CONNECTION FLANGE
64.6	EN18031171	SAFETY LOOP
64.7	EN12240160	BEARING 32007A
64.8	EN3090101	GREASE ZERK M8 X 1

**(Table 3.1) T624 Series**

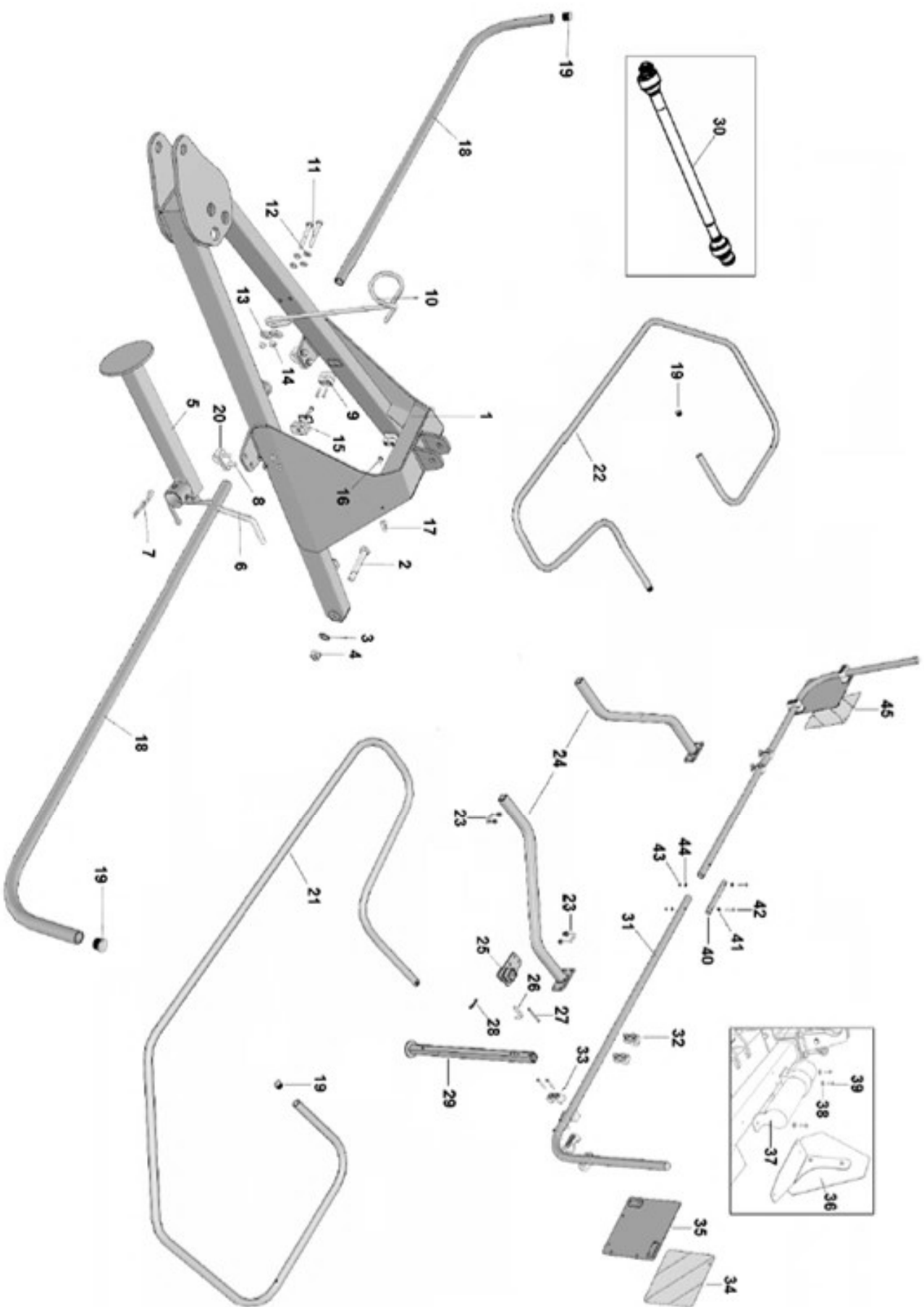




**(Table 3.1) T624 Series**

<b>Item</b>	<b>Part No.</b>	<b>Description</b>
1	EN18037642	HELM (Tongue)
2	EN18033636	THREADED PIN
3	EN3030168	FLATWASHER M20
4	EN3020216	SELF LOCKING NUT M20
5	EN18032774	STAND
6	EN18033195	PIN Dia. 15mm X 200mm
7	EN3040202	SPLIT PIN
8	EN3070118	U-BOLT M10
9	EN18033216	COLLAR C3
10	EN18037319	HYD HOSE SUPPORT
11	EN3011724	HH SCREW M12 X 90
12	EN3030162	FLATWASHER M12
13	EN18033240	SPRING WASHER
14	EN3020202	SELF LOCKING NUT M12
15	EN18033342	COLLAR CF2
16	EN3011251	HH SCREW M 8 X 20
17	EN3210108	EYEBOLT M8
18	EN18033832	FRONT PROTECTION GUARD
19	EN9190018	RUBBER CUP 32mm
20	EN12881497	BASE COLLAR
21	EN18033804	LH SIDE PROTECTION GUARD
22	EN18033803	RH SIDE PROTECTION GUARD
23	EN3170120	U-BOLT M10 X 40
24	EN18033835	GUARD SUPPORT
25	EN18033800	STAND SUPPORT
26	EN18033247	BENT PIN 12mm
27	EN3040117	ELASTIC PIN Dia. 8mm X 80mm
28	EN3040201	SPLIT PIN 3 X 60
29	EN18033801	LEG STAND
30	EN8020426	DRIVELINE 1200NM L-1520mm
31	EN18037479	BACK PROTECTION GUARD

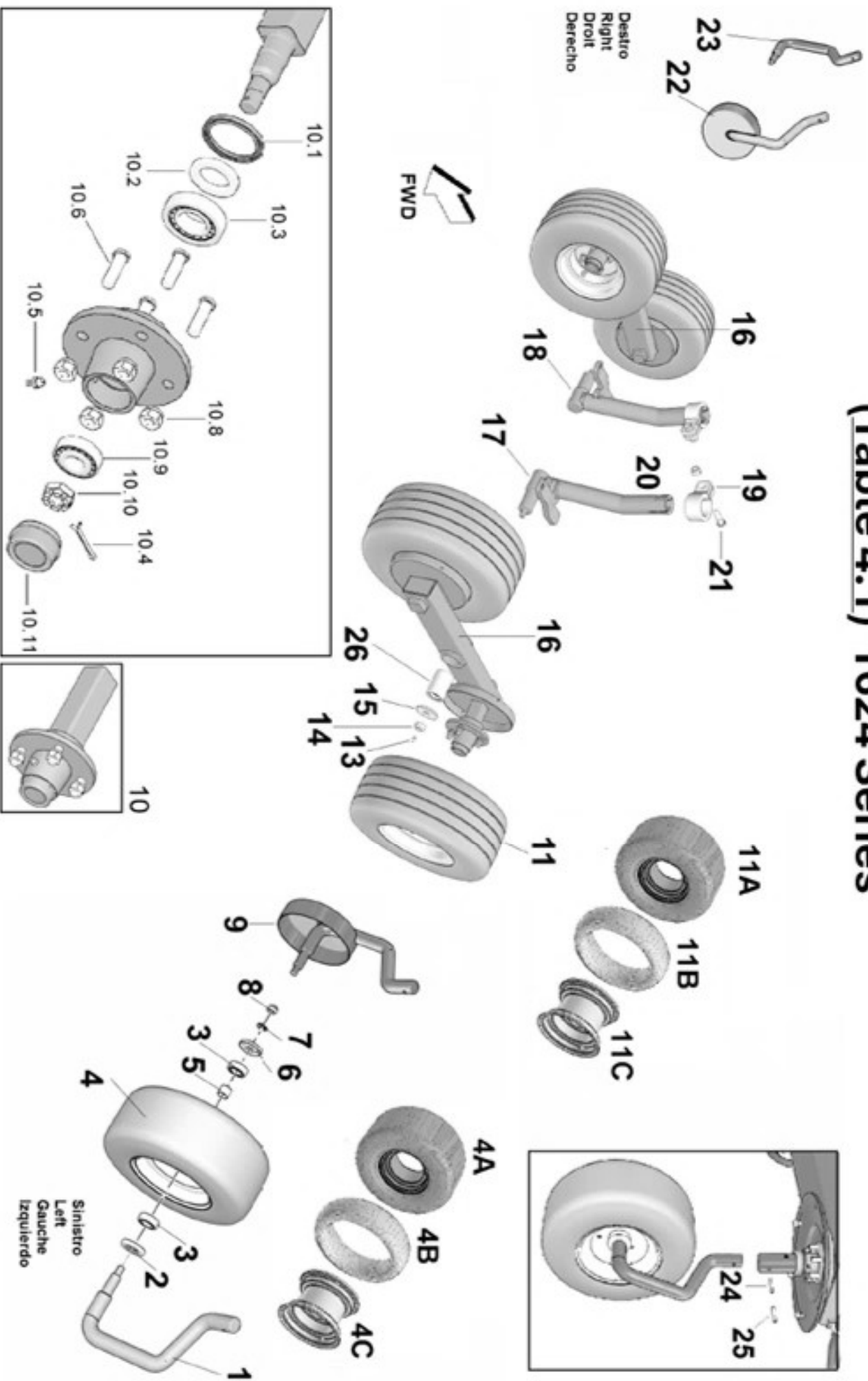
**(Table 3.2) T624 Series**



**(Table 3.2) T624 Series**

<b>Item</b>	<b>Part No.</b>	<b>Description</b>
32	EN3070118	U-BOLT M10
33	EN18035693	COLLAR CF6
34	EN12880429	LH ADHESIVE LABEL (W/R)
35	EN18037480	LABEL HOLDER PLATE
36	EN18038195	REAR PANEL
37	EN9080022	MANUAL HOLDER
38	EN3030160	WASHER M6
39	EN3011258	HH SCREW M6 X 20
40	EN14013219	PROTECTION CONNECTOR
41	EN3030156	FLATWASHER M8
42	EN3011258	HH SCREW M8 X 45
43	EN3020209	SELF LOCKING NUT
44	EN3030156	FLATWASHER M8
45	EN12880428	RH ADHESIVE LABEL

# (Table 4.1) T624 Series

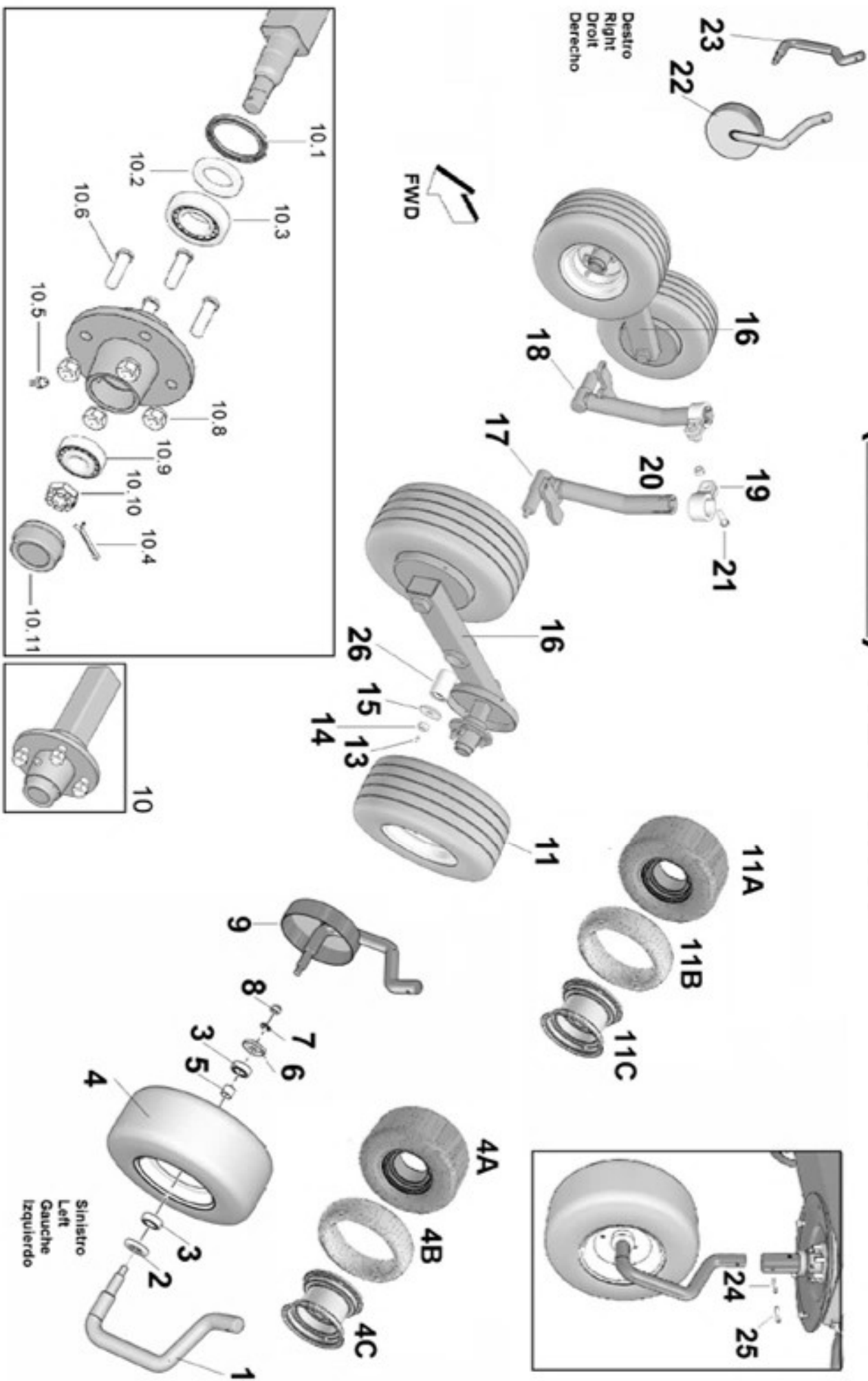


## (Table 4.1) T624 Series

Item	Part No.	Description
1	EN18032318	RH AXLE
2	EN12070314	INTERNAL SHIELD
3	EN12240128	BEARING 6205 2RS
4	EN12170106	WHEEL COMPLETE 16.650.8
4A	EN12070327	TIRE 16.650.8
4B	EN12070326	AIR TUBE 16.650.8
4C	EN12070325	WHEEL RIM
5	EN12070307	SPACER
6	EN12070315	EXTERNAL SHIELD
7	EN3030175	FLATWASHER 30 X 17 X 3
8	EN3020204	SELF LOCKING NUT M16
9	EN18032307	LH AXLE FENDER
10	EN14020487	COMPLETE WHEEL HUB
10.1	EN18037709	INTERNAL SHIELD
10.2	EN18037708	SPACER
10.3	EN12240144	BEARING 30206
10.4	EN3040103	ELASTIC PIN 4 X 40
10.5	NA	(Intentionally left blank)
10.6	EN18037704	HH BOLT M12 X 37
10.7	NA	(Intentionally left blank)
10.8	EN18037705	SELF LOCKING NUT M12
10.9	EN12240118	BEARING 30204
10.10	EN3020210	SELF LOCKING NUT M18
10.11	EN18037703	HUB CAP
11	EN12170123	WHELL COMPLETE 16.5 X 6.5-8
11A	EN12070327	TIRE 16.5 X 6.5-8
11B	EN12070326	AIR TUBE 16.5 X 6.5-8
11C	EN12070325	WHEEL RIM 16.5 X 6.5-8
12	NA	(Intentionally left blank)
13	EN3090102	GREASE ZERK M6 X 1
14	EN3020204	SELF LOCKING NUT M16

NA = Not Applicable

**(Table 4.2) T624 Series**

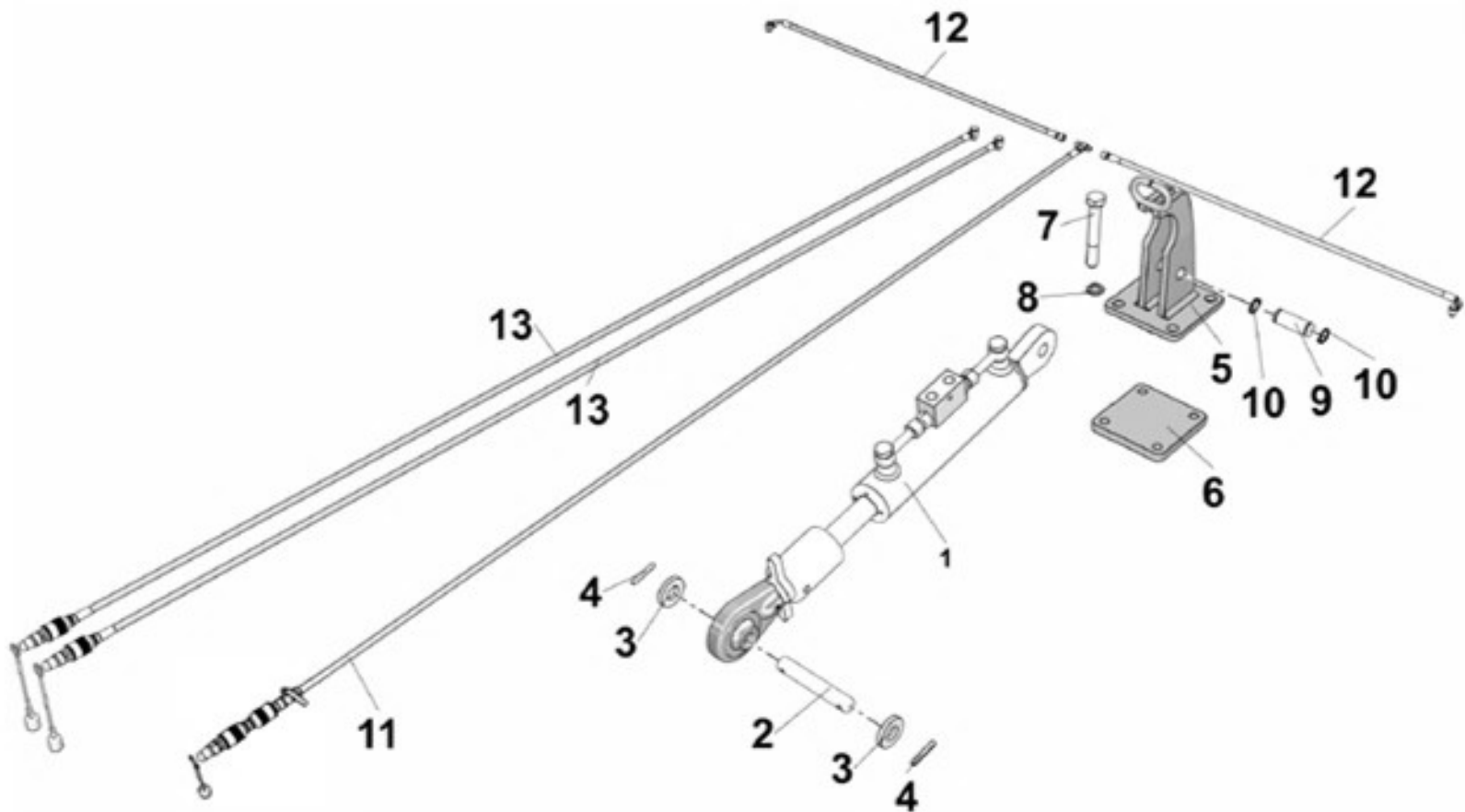




**(Table 4.2) T624 Series**

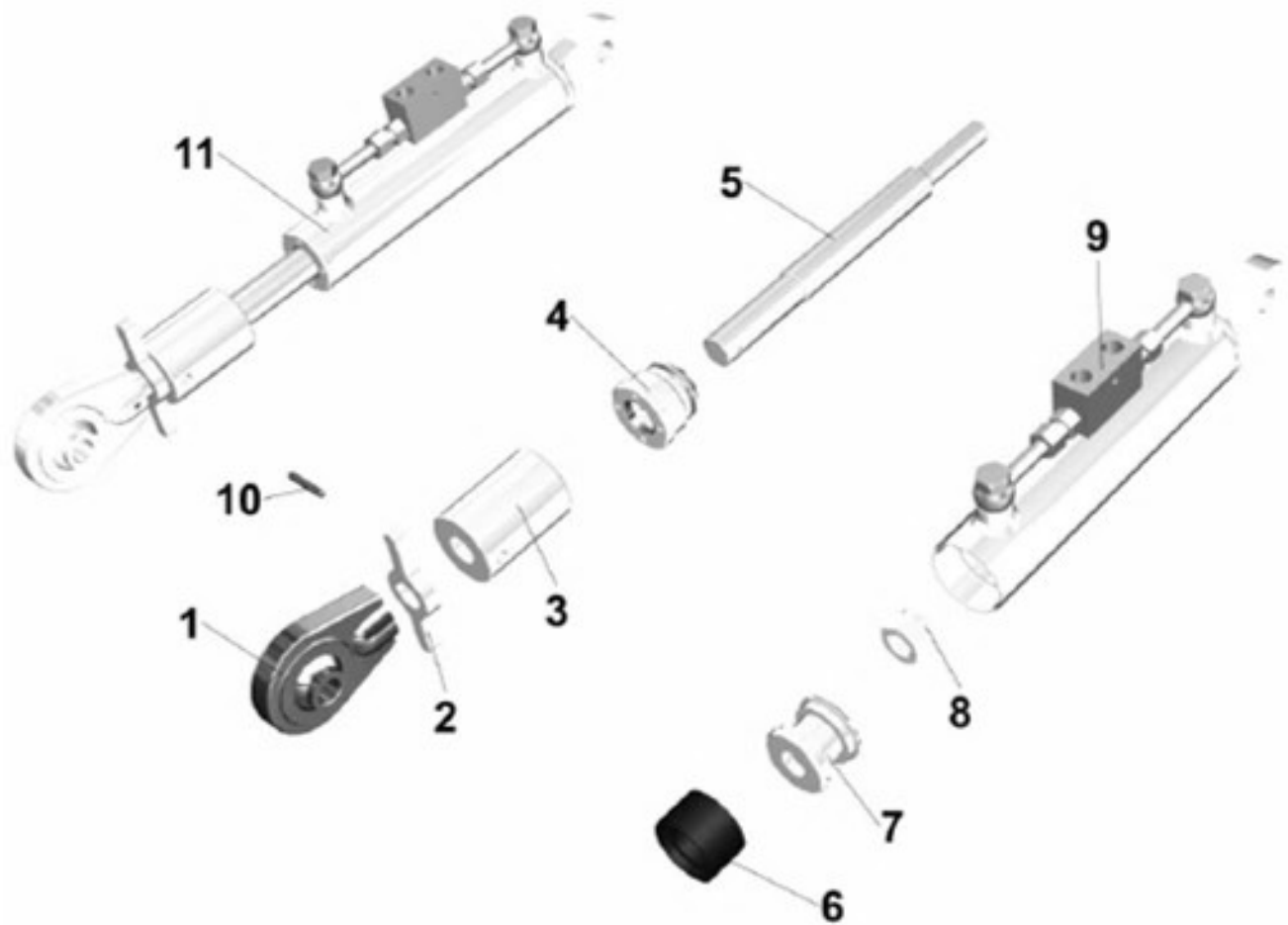
<b>Item</b>	<b>Part No.</b>	<b>Description</b>
15	EN18034212	FLATWASHER 60 X 16 X 5
16	EN18037562	TANDEM AXLE
17	EN18035942	LH WHEEL AXLE STEM
18	EN18035941	RH WHEEL AXLE STEM
19	EN18031588	SLEEVE
20	EN3020203	SELF LOCKING NUT M14
21	EN3011265	HH SCREW M14 X 50
22	EN18032315	RH AXLE & FENDER
23	EN18032316	LH OUTSIDE AXLE STEM
24	EN3080141	ELASTIC PIN 10 X 55
25	EN3080142	ELASTIC PIN 6 X 55
26	EN12880553	BUSHING

**(Table 5) T624 Series**



Item	Part No.	Description
1	EN18033663	COMPLETE CYLINDER 50mm C.169
2	EN18033321	PIN Dia. 19mm X 115mm
3	EN18033833	FLATWASHER
4	EN3080103	ELASTIC PIN 6 X 40
5	EN18035531	TOP CYLINDER BRACKET
6	EN18035418	ATTACHMENT PLATE
7	EN3010408	HH SCREW M16 X 110
8	EN3030322	LOCKWASHER M16
9	EN18033713	PIN Dia. 20mm X 100mm
10	EN3120157	SNAP RING Ext. 20mm
11	EN12760722	HYD HOSE L-3400mm (133-7/8")
12	EN12760724	HYD HOSE L-1350mm (53-1/8')
13	EN12760723	HYD HOSE L-3400mm (133-7/8")

## (Table 6) T624 Series



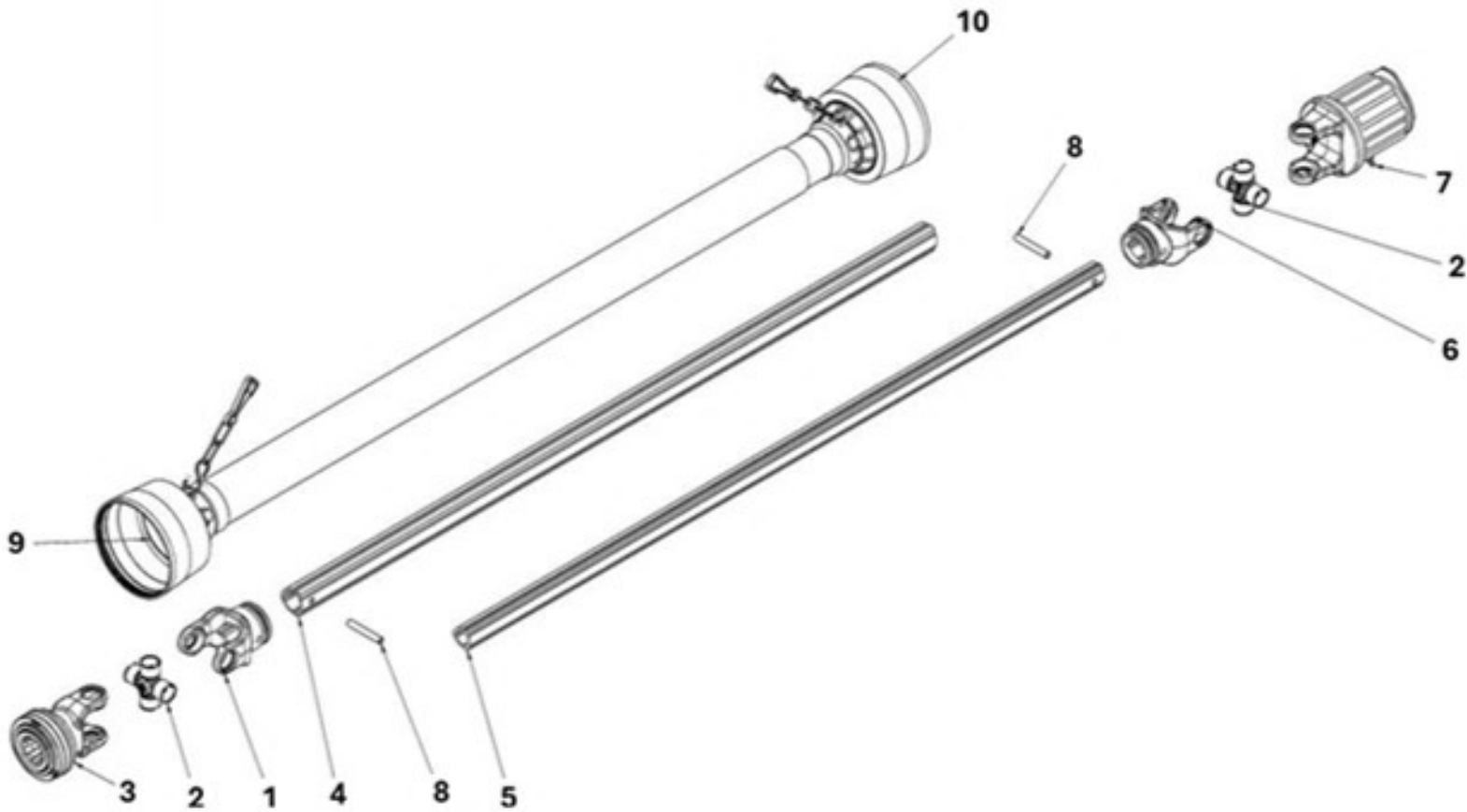
Item	Part No.	Description
1	EN18032187	ROD END SUPPORT
2	EN18031556	HANDLE
3	EN18031555	BUSHING
4	EN12070319	HEAD
5	EN12070349	ROD
6	EN18033666	CYL SEAL KIT
7	EN12070343	PISTON
8	EN3020217	NUT M20 X 1.5
9	EN18053186	CYLINDER TUBE WITH VLAVE
10	EN3080103	ELASTIC PIN 6 X 40
11	EN18033663	COMPLETE CYLINDER Dia. 50mm X C.169

## (Table 7) T624 Series



Item	Part No.	Description
1	EN18036051	ROD
2	EN18036052	HEAD
3	EN18036053	SEAL KIT 50-35
4	EN18036054	CYLINDER TUBE
5	EN18034348	COMPLETE CYLINDER (Folding)

## (Table 8) T624 Series



Item	Part No.	Description
1	EN12881466	OUTER TUBE YOKE
2	EN12881467	CROSS KIT
3	EN12881468	TRACTOR YOKE WITH QUICK RELEASE (1-3/8" 6-Spline)
4	EN12881469	OUTER CARDAN TUBE L-1060mm
5	EN12881470	INNER CARDAN TUBE L-1060mm
6	EN12881471	INNER TUBE YOKE
7	EN12881472	TORQUE LIMITER
8	EN12881473	ELASTIC PIN 8 X 65
9	EN12881474	OUTER SHILED HALF
10	EN12881475	INNER SHIELD HALF
<b>EN8020426</b>		<b>COMPLETE DRIVELINE 12NM L-1520mm</b>

# (Table 9) T624 Series



Item	Part No.	Description
1	EN9270212	SAFETY DECAL SHEET - USA