



CID

ATTACHMENTS

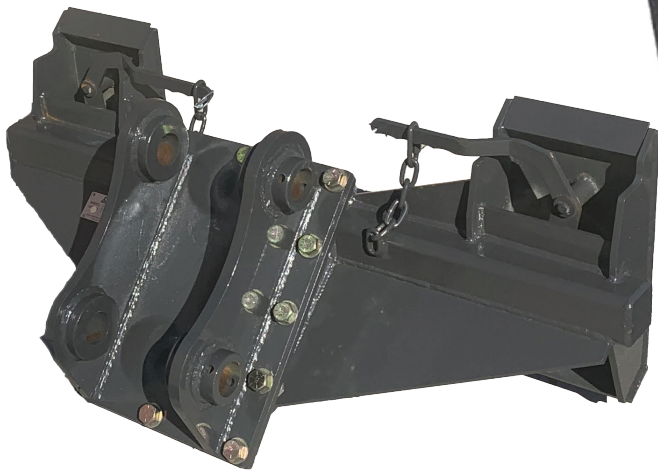
HITCHES & CONVERSIONS



GOOSENECK RECEIVER HITCH



EURO CONVERSION



EXCAVATOR CONVERSION



3 POINT RECEIVER HITCH

SLM OWNER'S MANUAL

REGISTER YOUR PRODUCT

CID	WWW.CIDATTACHMENTS.COM	336-859-2002
MODEL	<input type="text"/>	WEIGHT <input type="text"/>
PART	<input type="text"/>	HP RANGE <input type="text"/>
SERIAL	<input type="text"/>	
HYDRAULIC PRESSURE	<input type="text"/>	HYDRAULIC FLOW <input type="text"/>

Please see Page 9 for instructions of where to find your model and serial number.

WARNING

To prevent personal injury or even death, be sure you read and understand all the instructions in this manual and other related OEM equipment manuals! This attachment is designed for the purpose specified. DO NOT modify or use this attachment for any application other than that for which it was designed.

Thank you for choosing CID. This attachment has been designed and manufactured to meet the needs of discerning users. We are committed to providing you with a heavy duty product that will provide years of satisfaction and safe operation.

This manual will provide instructions on how to safely operate and maintain this attachment. All users must read and understand this manual before operating this attachment. Upon reading this manual, all users should sign the “Safety Acknowledgment Form” at the end of this manual.

Please record your model and dealer information on the inside front cover. You will be asked to provide this information when ordering parts or requesting service. If you need more information on this product, contact your local dealer or visit www.cidattachments.com.

Sincerely, Cid Attachments



TABLE OF CONTENTS

INTRODUCTION	2
SECTION 2 HITCHES & CONVERSION MODELS	
2.0 Hitches & Conversions.....	4-6
SECTION 3 BASIC SAFETY AND OPERATING PROCEDURES	
3.0 Safety Terms.....	7
3.1 Safety Symbols & Decals.....	8-9
3.2 Skid Loader Requirements.....	10
3.3 Personal Protective Equipment.....	10
3.4 Federal Law & Regulations.....	10
3.5 Safety Instructions.....	11
SECTION 4 OPERATING PROCEDURES	
4.0 Unpacking Your Attachment.....	12
4.1 Pre-Operating Checklist.....	12
4.2 How To Connect Hitch or Conversion.....	12-13
4.3 How To Disconnect Hitch or Conversion For Skid Steer.....	14
4.4 Operating Procedures.....	14-16
SECTION 5 MAINTENANCE PROCEDURES	
5.0 Maintenance Overview.....	17
5.1 Maintenance Instructions.....	18
5.2 Greasing Your Attachment.....	18
5.3 Maintenance Log Instructions.....	19
5.4 Storage Tips.....	19
5.5 Torque Specifications Table & Instructions.....	20
5.6 Torque Equipment Requirements.....	20
SECTION 6 TROUBLESHOOTING	
6.0 Troubleshooting Chart.....	21
SECTION 7 PARTS INFORMATION	
7.0 Excavator Conversion Part Diagram.....	22
7.1 Mini Excavator Conversion.....	23
7.2 Mini Universal Part Diagram.....	24
7.3 John Deere Conversion Part Diagram.....	25
7.4 3 Point Receiver Hitch.....	26
SECTION 8 WARRANTY INFORMATION	
8.0 Warranty Statement.....	27-28
8.1 Warranty Return Authorization Policy.....	28
8.2 Warranty Procedure.....	29
SECTION 9 SAFETY ACKNOWLEDGMENT FORM	30
SECTION 10 MAINTENANCE LOGS	31

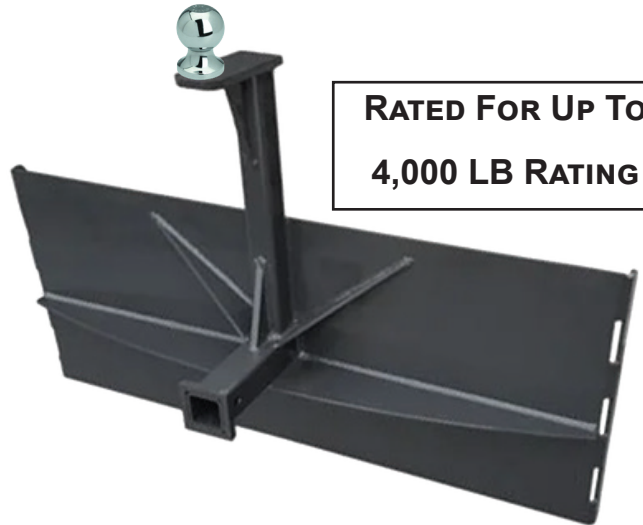
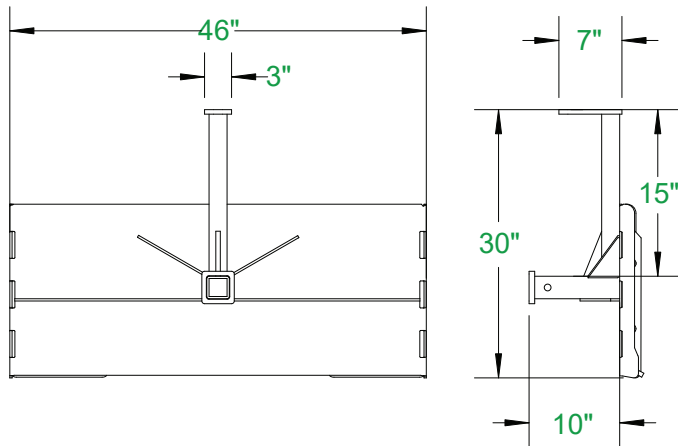
Disclaimer: Any critical changes made to this manual by individuals outside the manufacturer's authorized personnel are doing so at their own risk. The manufacturer cannot be held legally responsible for any consequences, damages, or liabilities resulting from such modifications. It is advised to adhere strictly to the original manual provided by the manufacturer for optimal performance, safety, and reliability.

SECTION 2

HITCHES & CONVERSION MODELS*

* Please note: All of our 40+ options are not shown. Contact your dealer for parts, support, and additional options.

GOOSENECK RECEIVER HITCH

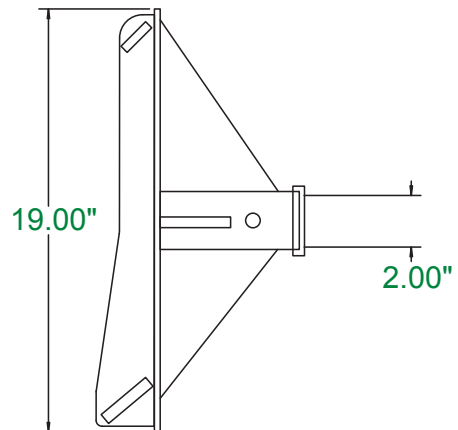
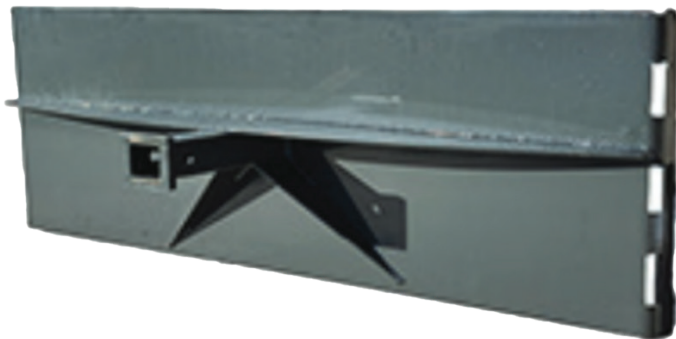


RATED FOR UP TO 4,000 LB RATING

***MAKE SURE THE PROPER BALL SIZE IS UTILIZED WITH THE PROPER COUPLER SIZE.**

RECEIVER HITCH

RATED FOR UP TO 4,000 LB RATING



3 POINT RECEIVER HITCH

AVAILABLE OPTIONS:

CAT. 1 (20-45 HP)

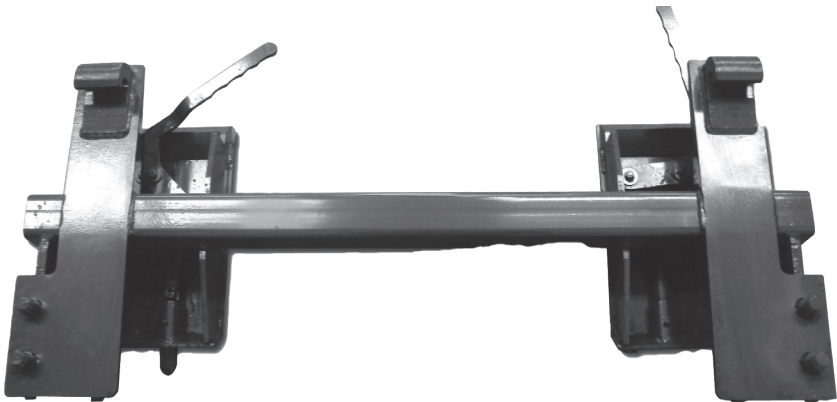
CAT. 2 (45-100 HP)



RATED FOR UP TO 4,000 LB RATING

2.0 HITCHES & HOOKUP MODELS

JOHN DEERE CONVERSION



EURO CONVERSION

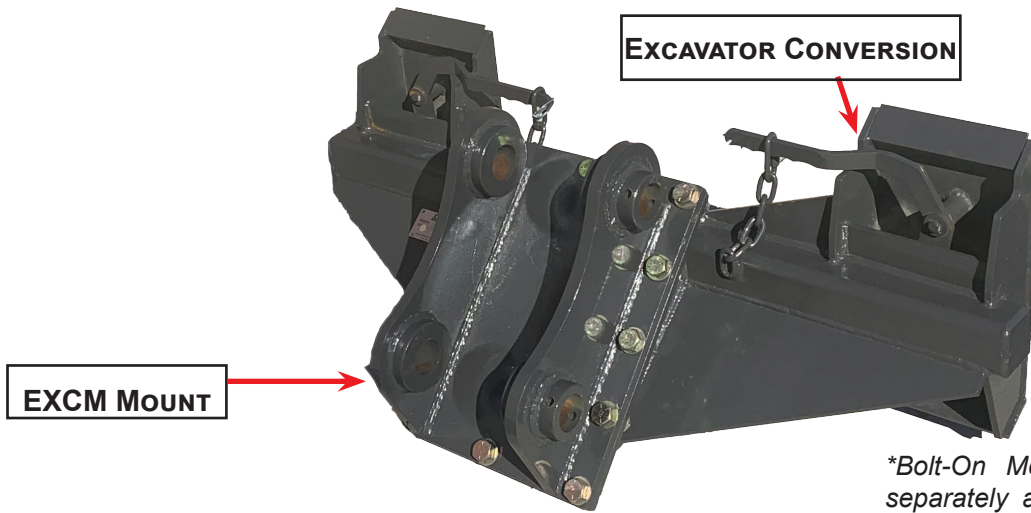


FROM MINI SKID STEER TO FULL SIZE SKID STEER



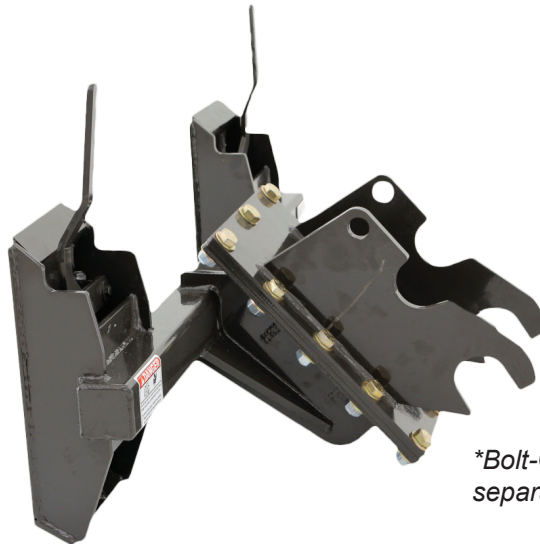
2.0 HITCHES & HOOKUP MODELS

EXCAVATOR CONVERSION TO UNIVERSAL SKID STEER MOUNT



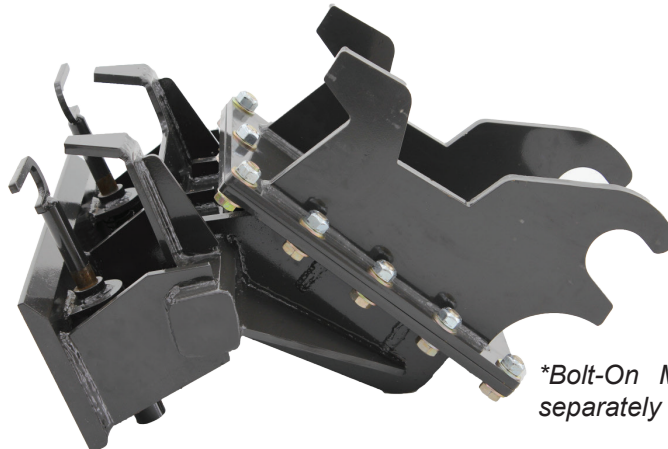
*Pictured with Excavator Mount bolted to Excavator Conversion

MINI EXCAVATOR CONVERSION TO MINI SKID STEER MOUNT (MT50)



MINI EXCAVATOR CONVERSION TO MINI SKID STEER UNIVERSAL MOUNT*

**Walk Behind Machines*



SECTION 3

SAFETY AND OPERATION

The following terms may be used interchangeably throughout this manual.

Term	Alternate Terms Used
Hitches or Conversions	implement, attachment, product, hitches, conversions
Machine	skid steer loader, skid steer tractor, loader, prime mover, host machine, skid steer
Operator	user, personnel

This **Hitch or Conversion** is designed and manufactured with safety in mind. However, improper use and operator error can result in death or serious injury. It is important that you read and fully understand the safety instructions and operating procedures presented in this manual before operating this attachment. Accident prevention is a combination of good judgment, common sense, awareness and proper training!

 **BEFORE YOU OPERATE THIS HITCH OR CONVERSION:**

KNOW how to safely operate your machine.

READ and UNDERSTAND the safety instructions and operating procedures contained in this manual.

ACKNOWLEDGE your understanding of all safety instructions presented in this manual by signing the “Safety Acknowledgment Form” at the end of this manual.

Although every effort has been made to ensure a safe product, every possible circumstance that could pose a potential hazard cannot be anticipated. The warnings presented in this manual and on this product, are therefore not all-inclusive.

In addition to the safety messages presented in this section, you must also read and understand the safety messages presented in the other sections of this manual.

3.1 SAFETY SYMBOLS & DECALS

This manual and the decals on this attachment use safety symbols, hazard labels, pictograms and color coded signal words to alert you to potential hazards that may cause severe injury or death if a safety instruction is ignored.



SAFETY ALERT SYMBOL - This symbol is used to alert you to potential personal injury hazards. Obey all safety messages that follow this symbol to avoid possible injury or death.

HAZARD CLASSIFICATIONS

Hazards are identified by the “Safety Alert Symbol” and followed by the signal word “DANGER”, “WARNING”, or “CAUTION”.

! DANGER
Indicates an imminently hazardous situation which, if not avoided, will result in death or serious injury. This signal word is limited to the most extreme situations.

! WARNING
Indicates a potentially hazardous situation which, if not avoided, could result in death or serious injury.

! CAUTION
Indicates a potentially hazardous situation which, if not avoided, may result in minor or moderate injury.

NOTICE
Indicates a situation which may cause damage to equipment or property. Messages are not related to personal injury.

Safety Instructions
Indicates specific safety-related instructions or procedures.

Pictogram	Description
	OPERATING MANUAL: Operators must read and understand the safety instructions in the operating manual to prevent death or serious injury.
	EYE PROTECTION & CARDBOARD: Operators and Maintenance personnel must wear proper eye protection and use cardboard or wood to investigate hydraulic leaks to prevent death or serious injury from being injected with high pressure hydraulic fluid.
	HIGH PRESSURE FLUID INJECTION HAZARD: Operators and Maintenance personnel must not place fingers or hands directly over a hydraulic leak to prevent death or serious injury from being injected with high pressure hydraulic fluid.
	NO BYSTANDERS: DO NOT operate this attachment near bystanders. Bystanders must stay back at least 300 feet from the attachment to prevent death or injury from objects being thrown.
	CRUSH HAZARD: DO NOT place any part of the body under the attachment or machine to prevent death or serious injury from being crushed .

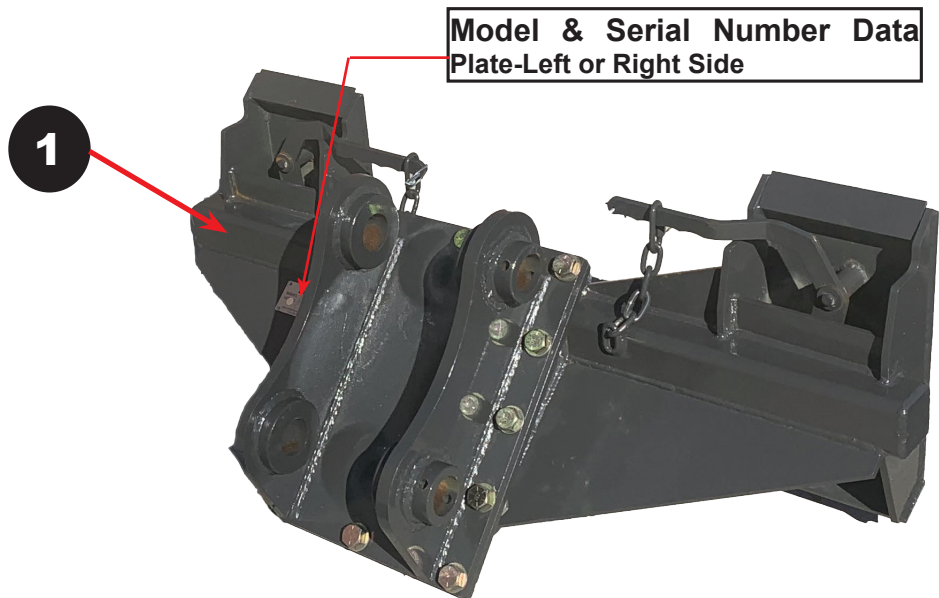
3.1 SAFETY SYMBOLS & DECALS

The safety decals affixed to this attachment are to keep you safe. DO NOT ignore these decals.

Read and understand each decal's safety message. Follow these Safety Decal Instructions:

**WHEN ORDERING, CHOOSE THE PROPER DECAL FOR YOUR MODEL*

REF	DESCRIPTION	LABEL	QTY
1	DANGER-Falling Object/ Crushing Hazard (CID-05)		1



CONTACT YOUR LOCAL DEALER TO ORDER REPLACEMENT DECALS

- ⚠ Decals must be kept clean and legible at all times.
 water jet is not too close to the decal as this may cause the decal to peel.
- ⚠ Operators must inspect the attachment for safety decals.

⚠ When replacing parts, be sure safety decals are in place prior to using the attachment.
- ⚠ Replace missing, worn or damaged decals immediately.

⚠ Make sure metal surface is dry and free of dirt and grease before affixing decals to this attachment.
- ⚠ When using a hot pressure washer to clean this attachment make sure

⚠ Make sure metal surface is dry and free of dirt and grease before affixing decals to this attachment.

3.2 SKID STEER LOADER REQUIREMENTS



Tracked

VS.



Wheeled

A Tracked Skid Steer or Compact Track Loader (CTL) will provide superior stability in this application.

! CAUTION

Make sure your machine is in good operating condition. Follow the operating instructions found in the operator's manual. Failure to do so could result in minor or serious injury.

Consult the host machine's rated operating capacity to ensure you have the proper lift capacity for optimal operation of your attachment.

Flow range MUST support the attachment.

3.3 PERSONAL PROTECTIVE EQUIPMENT (PPE)

All operators should wear hearing protection, safety glasses, hand protection and dust mask while operating this attachment.



3.4 FEDERAL LAWS & REGULATIONS

OSHA REGULATIONS

Current OSHA regulations state in part: "At the time of initial assignment and at least annually thereafter, the employer shall instruct every employee in the safe operation and servicing of all equipment with which the employee is, or will be involved." These will include (but are not limited to) instructions to:

Keep all guards in place when the machine is in operation;

Permit no riders on equipment;

Stop engine, disconnect the power source, and wait for all machine movement to stop before servicing, adjusting, cleaning, or unlogging the equipment, except where the machine must be running to be properly serviced or maintained, in which case the employer shall instruct employees as to all steps and procedures which are necessary to safely service or maintain equipment.

Make sure no one is within 300 feet of machinery before starting the engine, engaging power, or operating the machine.

3.5 GENERAL SAFETY INSTRUCTIONS



MAKE SURE YOU FOLLOW THE GENERAL SAFETY INSTRUCTIONS THAT RELATE TO THE OVERALL OPERATION AND MAINTENANCE OF THIS ATTACHMENT. IT IS IMPORTANT THAT YOU READ AND UNDERSTAND EACH OF THESE MESSAGES TO PREVENT SERIOUS INJURY OR DEATH.

- ! NEVER** use drugs or alcoholic beverages while operating or servicing this attachment.
- ! ALWAYS** operate this attachment during daylight or well-lit areas.
- ! We recommend** using a high strength clear protective door panel when using with this attachment.
- ! To prevent** the machine and attachment from rolling forward, stop the engine and set the parking brake when exiting the machine.
- ! Inspect** attachment for loose or missing hardware prior to using this machine.
- ! ALWAYS** watch for overhead power lines.
- ! DO NOT** place any part of your body under this attachment.
- ! NEVER** operate this attachment when bystanders are within 300 feet of your work area. Falling debris could cause serious injury or death.
- ! NEVER** position your body or limbs under an unsupported attachment.
- ! DO NOT** allow this attachment to contact buildings, utilities, large rocks or tree stumps or you may lose control of the machine.
- ! DO NOT** allow children to play on or around this attachment at any time. Store this attachment in an area not frequented by children.
- ! ALWAYS** wear the proper personal protection equipment while operating or servicing this attachment. **NEVER** operate or service this attachment with bare feet, sandals, or other light footwear.
- ! ALWAYS** wear work gloves when handling this attachment to protect your hands.
- ! ALWAYS** use eye protection while operating or servicing this attachment.
- ! DO NOT** operate this attachment during lightning or severe weather conditions.
- ! DO NOT** allow riders on the machine or on this attachment.
- ! ALWAYS** call 811, the “Digger’s Hotline” before digging to identify underground utilities to avoid an accident that could result in Death or Serious Injury to the operator.
- ! DO NOT** speed! Speed Kills! Keep your driving speed between 2 and 5 mph.

SECTION 4

OPERATING PROCEDURES

Your attachment arrives from the factory strapped to a wood pallet and requires no final assembly. Use a steel band cutting tool to remove the steel straps.

CAUTION

Shipping straps are under great tension, and could lash out uncontrollably when cut causing injuries to your body or bystanders. Keep bystanders away and wear safety glasses and gloves while removing the steel straps.

4.1 PRE-OPERATING CHECKLIST

Pre-Operating Checklist	
<input type="checkbox"/>	Hitch/Conversion is securely attached to the machine.
<input type="checkbox"/>	Hitch/Conversion is in working condition and securely attached to the machine and all bolts and nuts are tight.
<input type="checkbox"/>	Safety labels are present and legible.
<input type="checkbox"/>	No material, wire, etc. is obstructing the machine or attachment.
<input type="checkbox"/>	The area of operation is clear of bystanders and any obstacles that could damage the equipment or injury to the operator.
<input type="checkbox"/>	The operator is of good health and not under the influence of any mind altering substances or alcohol.
<input type="checkbox"/>	Check the machine's hydraulic fluid level and add manufacturer recommended fluid if necessary.

4.2 HOW TO CONNECT HITCH OR CONVERSION

DANGER

NEVER enter the area underneath the coupler or any part of the attachment when it is in the raised position to avoid an accident that will result in Death or Serious Injury!

GENERAL ATTACHMENT METHOD

Refer to your machine's manual for specific instructions on how to connect and disconnect your attachment. See figure 4.2c.

4.2 HOW TO CONNECT HITCH OR CONVERSION

This attachment method refers specifically to skid steers. For all other attachment instructions, refer to the Original Equipment Manufacturer (OEM) for instructions. *The Excavator Conversion shown, is one of many. Consult your machine manual or dealer for hookup details specific to your machine.*

1. Make sure the locking pins on the skid steer quick attach mechanism are in the unlocked position.
2. Drive the skid steer to the attachment plate and tilt the skid steer coupler forward and hook the top edge of the skid steer quick attach mechanism under the lip of the attachment plate. See figure 4.2a below.
3. Slowly raise and tilt back the skid steer mounting plate, moving upward until the attachment plate is flat against the skid steer quick attach mechanism. See figure 4.2a below.

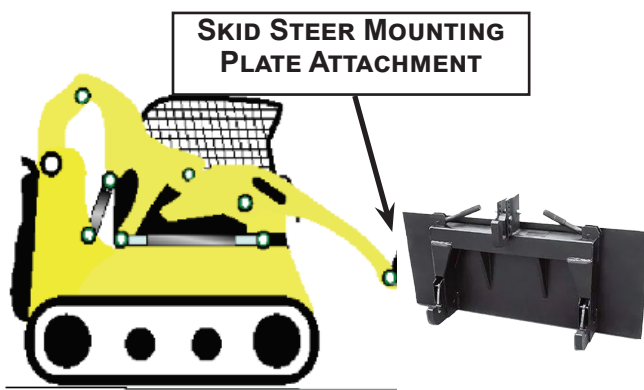


FIGURE 4.2A - SKID STEER MOUNTING PLATE TO ATTACHMENT MOUNTING FLANGE



FIGURE 4.2B - EXCAVATOR MOUNTING PLATE TO ATTACHMENT MOUNTING FLANGE

4. Activate your skid steer's lever lock switch to engage and lock the pins into the flange slots of the attachment plate. If your skid steer does not have this switch, push the latch handles down until you can see the lock pins extend into the attachment flange as shown in Figure 4.2c below.

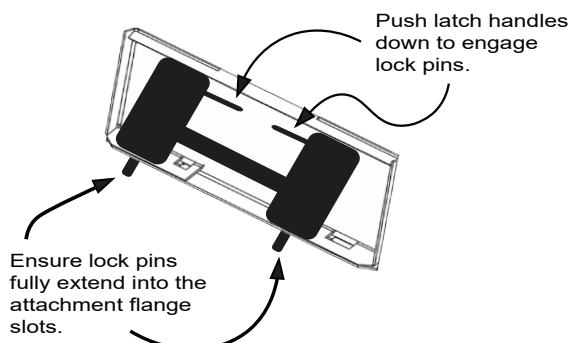


FIGURE 4.2C QUICK ATTACH COUPLER LOCKED TO ATTACHMENT PLATE



FIGURE 4.2D TRACTOR PIN ON HOOKUP

! WARNING

To avoid serious injury or death, ensure coupler pins fully extend through the slots on the attachment bracket and that levers are down in the locked position to prevent attachment from detaching from machine.

4.3 HOW TO DISCONNECT HITCHES & CONVERSIONS FOR SKID STEERS

1. Park machine on a flat and level surface then lower attachment to the ground.
2. Set parking brake and disengage lock pins using the lock lever switch (if installed).
3. Turn off machine engine.
4. Pull latch handles to disengage lock pins.
5. Re-enter cab and start machine engine.
6. Tilt mounting coupler forward until Quick Attach Coupler is free from mounting bracket.
7. Drive machine backward to clear attachment.

4.4 OPERATING PROCEDURES

DANGER

To prevent death from electrocution, NEVER operate this attachment near electrical wires or cables.

FOR TRACTOR, MINI SKID STEER CONVERSIONS, OR SKID STEER CONVERSIONS: (4,000 LB WORKING WEIGHT)

1. Always inspect work area before starting and never assume it is safe or skip this step before using your new conversion.
2. Lower skid steer attachment flange or tractor hookup within 1-3" of the ground and begin hooking up to the skid steer or tractor attachment.
3. Always use gloves and be careful to not pinch, or drop attachment plate as it can cause injury to yourself, others, or your machine.
4. Once it's set in place, continue by fully locking both sides of the attachment by either pin on method, or skid steer locking pin methods. Whichever is applicable for your use.
5. Before beginning full use, do a basic movement with the attachment locked in place and make sure it's properly hooked up. Begin using!
6. As with all our attachments, do not exceed GPM, or weight capacity of your machine, the attachment, or the conversion. Be aware when using conversions or hitches, the combined weight is increased.
7. When picking up objects with your attachment, make sure you center your load. Estimate the load center and pick up accordingly. Reposition your grab and retry if needed. An unbalanced load could flip your machine.
8. When using your attachment, make sure that you can visually see your load. Beware of pushing or pulling down trees or any type of structure in which you cannot visually see the process.
9. Keep your machine and attachment away from any type of utility, whether underground or in air.

FOR MINI-EXCAVATOR TO SKID STEER CONVERSIONS: (4,000 LB WORKING WEIGHT)

1. Always inspect work area before starting and never assume it is safe or skip this step before using your new conversion.
2. Lower your Mini-Excavator attachment conversion with the Skid Steer attachment flange to within 1-3 inches of the ground and begin hooking up to your attachment.

4.4 OPERATING PROCEDURES CONT...

FOR MINI-EXCAVATOR TO SKID STEER CONVERSIONS: (4,000 LB WORKING WEIGHT) CONT...

3. Always use gloves and be careful to not pinch, or drop attachment plate as it can cause injury to yourself, others, or your machine.
4. Align the pins, or the flange with about $\frac{1}{4}$ " of play so you can adjust and lock in place.
5. Once it's set in place, continue by fully locking both sides of the attachment by either pins, attachment locking methods, or bolts where appropriate. Whichever is applicable for your use and excavator machine and mount design. If there are safety mechanisms associated with your machine, please also lock or turn on those if applicable during this attaching process and (when applicable) while in use.
6. Before beginning full use, do a basic movement with the attachment locked in place and make sure it's properly hooked up. Begin using!
7. As with all our attachments, do not exceed GPM, or weight capacity of your machine, the attachment, or the conversion. Be aware when using conversions or hitches, the combined weight is increased.
8. When picking up objects with your attachment, make sure you center your load. Estimate the load center and pick up accordingly. Reposition your grab and retry if needed. Do not hookup or use with unbalanced loads as it could flip your machine.
9. When using your attachment, make sure that you can visually see your load. Beware of pushing or pulling down trees or any type of structure in which you cannot visually see the process.
10. Keep your machine and attachment away from any type of utility, whether underground or in air.

FOR ALL HITCHES (RECEIVER, GOOSENECK, 3-POINT) (4,000 LB WORKING WEIGHT)

! CAUTION Make sure the proper ball size is utilized with the proper coupler size.

2. Always inspect the work area before starting and never assume it is safe or skip this step before using your new hitch.
3. Lower your hitch attachment or 3-point hitch, to within 1-3" of the ground and begin hooking up to either your attachment or trailer coupler.
4. Always use gloves and be careful to not pinch fingers, or drop the hitch attachment as it can cause injury to yourself, others, or your machine.
5. Align the hookup or hitch ball so you can adjust and lock in place. Ideally also keeping all hands out of the way, and using your skid steer to tilt and grab the attachment plate/hitch combo or trailer.
6. Once it's set in place, lock trailer coupler or quick hitch to secure the attachment or trailer. If there are safety mechanisms associated with your attachment or trailer, please also lock or turn those on if applicable during this attaching process and (when applicable) while in use.
7. Before beginning full use, do a basic movement with the attachment or trailer locked in place and make sure it's properly hooked up. Begin using!
8. As with all our attachments, do not exceed weight capacity of your machine, the attachment, or the hitch. Be aware when using conversions or hitches, the combined weight is increased.
9. When picking up trailers or 3PT attachments, make sure you center your load, and also don't exceed the rated lifting capacity of the machine or hitch.

4.4 OPERATING PROCEDURES CONT...

FOR ALL HITCHES (RECEIVER, GOOSENECK, 3-POINT) (4,000 LB WORKING WEIGHT) CONT...

10. When using your hitch, make sure that you can visually see your load or trailer. Beware of pushing or pulling down trees or any type of structure in which you cannot visually see the process.
11. Keep your machine, attachment, or trailer away from any type of utility, whether underground or in air.
12. Estimate the load center and pick up accordingly. Do not hookup or use with unbalanced loads as it could flip your machine.
13. When unhooking: Chock wheels before unhooking from the attachment or trailer. Never unload or unhook on hills. Always make sure the area is safe for yourself, your machine and others around you before unhooking from the attachment, or trailer.

CAUTION

When moving trailers, keep your speed low (2-3 MPH) to prevent accidents or damage.



* Please note: All of our 40+ options are not shown. Contact your dealer for parts, support, and additional options.

SECTION 5

MAINTENANCE PROCEDURES

The maintenance procedures described in this manual should only be carried out by qualified mechanics who have been trained to repair this attachment.

Some procedures require special tools and skills to complete. **DO NOT** attempt to repair or perform service work on this attachment unless you have the skills and tools to do so. Contact your local dealer for maintenance and repair services.

WARNING

PARTS







Only use genuine Original Equipment Manufacturer (OEM) replacement parts on this attachment. We will not be liable for any damages or injuries caused by the use of after market parts on this attachment.

NOTICE

Improper maintenance or modifications to the design or performance of this attachment will void the warranty. **ONLY** use genuine OEM replacement parts on this attachment.

Safety Instructions

Obey the following safety instructions when servicing or repairing this attachment.

-  Wear proper Personal Protective Equipment (PPE) while working on this attachment, which may include safety glasses, hard hats, steel toe boots, gloves, etc.
-  Ensure all jack stands, lifts and hoists are in good working condition and have the rated load capacity to support the load.
-  If servicing is performed while the attachment is attached to the machine, turn engine off, set parking brake and chock wheels to prevent machine from moving.
-  Only perform service work in a well-lit area.
-  Allow the attachment to cool down before servicing this attachment.
-  **NEVER** work under an unsupported attachment.

WARNING

Hazardous dust can be generated if painted surfaces are heated or welded and could result in Death or Serious Injury. Remove paint before welding and always make repairs in a well-ventilated area and wear an approved respirator.

5.1 MAINTENANCE INSTRUCTIONS

This **Attachment** will provide years of dependable service if routine maintenance procedures are performed. The maintenance tasks listed below are based on normal operating conditions. More frequent maintenance may be necessary with intense use or when operating in adverse environmental conditions.

MAINTENANCE TASK	BEFORE EACH	WEEKLY	YEARLY
	USE		
Check weldment and latching mechanisms. Replace or repair damaged parts as needed.	X		
Check that all fasteners (nuts, bolts, washers, pins, keepers) are in place. Tighten as necessary.	X		
Inspect and replace any worn, torn, or missing safety decals.	X		
Lubricate pivot joints using WD-40 or Lithium grease. (Pins, latches, & Gooseneck / Hitch Ball)	X		
Lubricate Excavator coupler & hookup pins with Heavy Duty Lithium grease.	X		
Wash attachment.		X	
Check attachment for major scratches & dings. Sand and repaint these areas to prevent rust damage. *Use paint formulated for farm equipment which can be found at your local hardware store.			X

5.2 GREASING YOUR ATTACHMENT

! WARNING

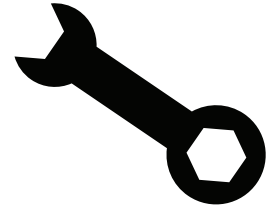
Improper lubrication may cause failure and unnecessary wear of parts of your attachment. For longevity and optimal performance, all moving parts of you attachment must be properly lubricated.



5.3 MAINTENANCE LOG INSTRUCTIONS



MAINTENANCE LOG



Use the log sheets on at the end of this manual to document all routine maintenance and repair services performed on this attachment.

10. MAINTENANCE

MAINTENANCE LOG

DESCRIPTION OF MAINTENANCE/REPAIR	SERVICED BY:	DATE:
<i>Replace Putter Blades</i>	<i>Joe Smith</i>	01/24/24
<i>Inspect Hydraulic Plumbing</i>	<i>Joe Smith</i>	02/25/24
<i>Change Oil in Bearing Housing</i>	<i>Joe Smith</i>	04/24/24

DANGER

ONLY service the attachment on stable, even terrain. NEVER park on sloped terrain to avoid being struck & killed or seriously injured by the unexpected rolling or movement of the machine.

5.4 STORAGE TIPS

	<p>Ensure attachment is free of debris, dirt and grease.</p>
	<p>Store your attachment in a dry shed or garage.</p>
	<p>When storing your attachment for the season, cover with a weather proof tarp to protect it from the elements.</p>


5.5 TORQUE SPECIFICATION TABLE AND INSTRUCTIONS

BOLT TORQUE INSTRUCTIONS

1. Apply and maintain proper torque on all bolts.
2. Torque values are based on lubricated values. **Do not grease or oil bolts.**
3. Wipe bolts clean and use Loctite 635 or equivalent before tightening bolts. May need curing activator.
4. Use a torque wrench to assure the proper amount of torque is being applied to the bolt.
5. **MUST CURE 72 HOURS BEFORE USE TO PREVENT LOOSENING OF BOLTS.**

TORQUE VALUES

SAE GRADE 8

	DRY	LUBRICATED
	lb.-ft.	lb.-ft.
1/4"	12	9
5/16"	24	18
3/8"	45	35
1/2"	110	80
3/4"	380	280
7/8"	600	450
1"	910	680
1 1/4"	1820	1360
1 1/2"	3162	2688

5.6 TORQUE EQUIPMENT REQUIREMENTS

TOOLS & EQUIPMENT REQUIREMENTS

To complete the maintenance procedures described in this section, you may need the following tools:

- 1/2 inch drive breaker bar
- 3/4 inch impact socket
- 1/2 inch impact socket
- Tapping Hammer
- 1/2 inch drive torque wrench
- Nylon pry bar set
- Safety stands
- **Loctite 635 or Equivalent-MUST CURE 72 HRS**
- Lifting device (overhead crane hoist, forklift)



NOTE:

When removing bolts with Loctite, it will be necessary to apply localized heat of at least 250 degrees Celsius or to 482 degrees Fahrenheit to loosen bolts.

LOCTITE 635 TECHNICAL SPECIFICATIONS FOR BONDING, CURING, REMOVAL AND INSTALLATION CAN BE FOUND HERE:

<https://next.henkel-adhesives.com/>

SECTION 6

TROUBLESHOOTING

TRACTOR OR SKID STEER OR MINI SKID STEER OR EXCAVATOR CONVERSION

PROBLEMS	POSSIBLE CAUSE	SOLUTION
Pins are wrong dimension or hookup does not line up.	An incorrect pin-on was built or requested, or the machine side is not built to OEM specifications. Damage has occurred to mount or attachment.	Check hookup specifications for both machine and attachment. If incorrect, call dealer to discuss repair or replacement.
Attachment flange on either side pulls free.	The attachment flange is not fully seated for hookup, and/or it is not locked in properly.	Re-seat or fully engage locking pins or mechanism.
Manual locking mechanism is stiff or doesn't move easily.	It needs greased, or weather is cold and icy causing stiffness. Also, debris or dirt could have built up on the mechanism. Locknut has been torqued too tight.	Add extra grease, remove foreign objects including dirt/ice. Adjust locknut torque if the bolt holding the attachment locking arm has been torqued too tight.

ALL HITCHES - 3 POINT RECEIVER, GOOSENECK

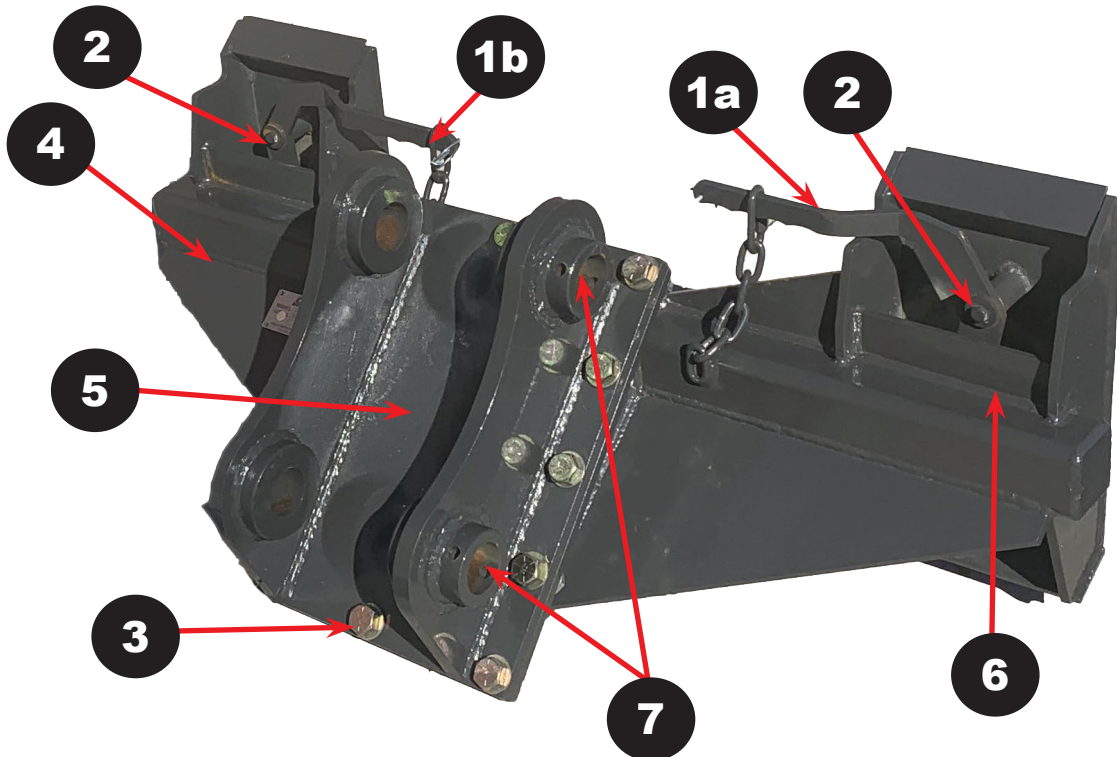
PROBLEMS	POSSIBLE CAUSE	SOLUTION
3 PT Hookup does not line up.	Damage has occurred and 3PT hitch may be bent. The 3PT hitch is not adjusted properly for correct hookup.	Call dealer to discuss repair or replacement. Adjust 3PT Hitch, or attachment side to hookup properly. Adjust bolting positions or bushings if necessary.
Attachment flange or trailer coupler pulls free.	The attachment flange is not fully seated for hookup, and/or it is not locked in properly. Mismatch for correct hitch ball size.	Re-seat or fully engage locking mechanisms for both 3PT side or Skid Steer side. Get correct hitch ball size.
Locking mechanism is stiff.	It needs greased, or weather is cold and icy causing stiffness. Also, debris or dirt could have built up on the mechanism. Locknut has been torqued too tight.	Add extra grease, remove foreign objects including dirt/ice. Adjust locknut torque if the bolt holding the attachment locking arm has been torqued too tight.

SECTION 7

PARTS INFORMATION

Factory OEM parts specifically designed for your implement are readily available.

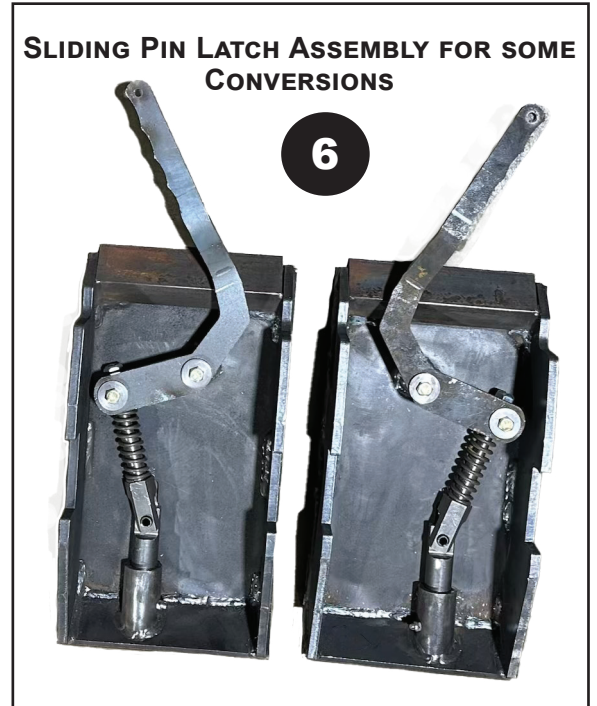
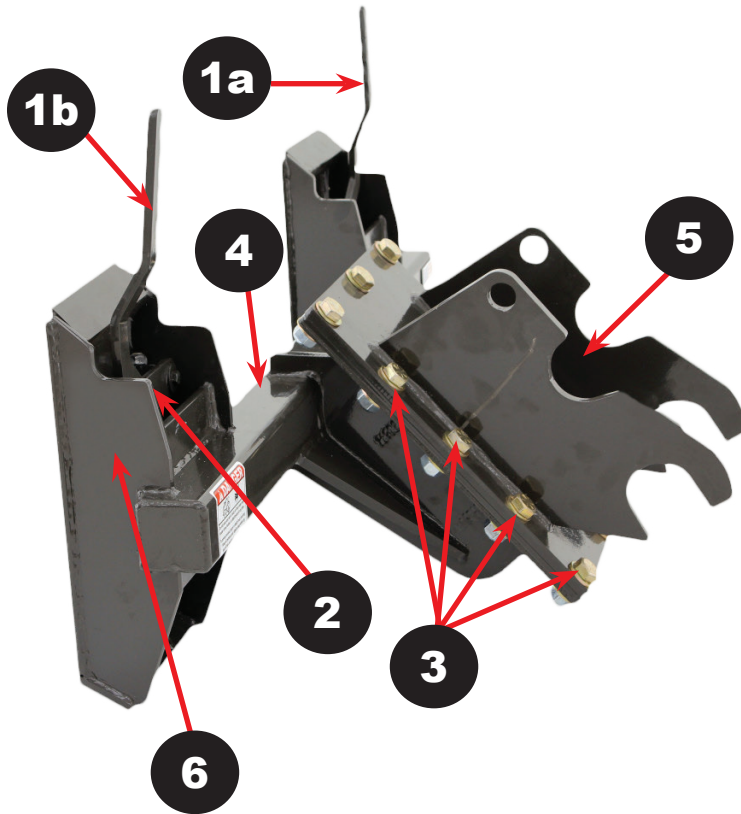
* Please note: All of our 40+ options are not shown. Contact your dealer for parts, support, and additional options.



Ref	Part Description	QTY
1	a. Right Side Latch Handle	1
	b. Left Side Latch Handle	1
2	Latch Bolt, Washer, Locknut	VAR
3	Mount Bolt, Washer, Locknut	VAR
4	Excavator Conversion Weldment	VAR
5	Excavator Conversion Mount	1
6	Sliding Pin Latch Assembly	VAR
7	Excavator Mount Pins	VAR

7.1 MINI EXCAVATOR CONVERSION (MT50) PART DIAGRAM

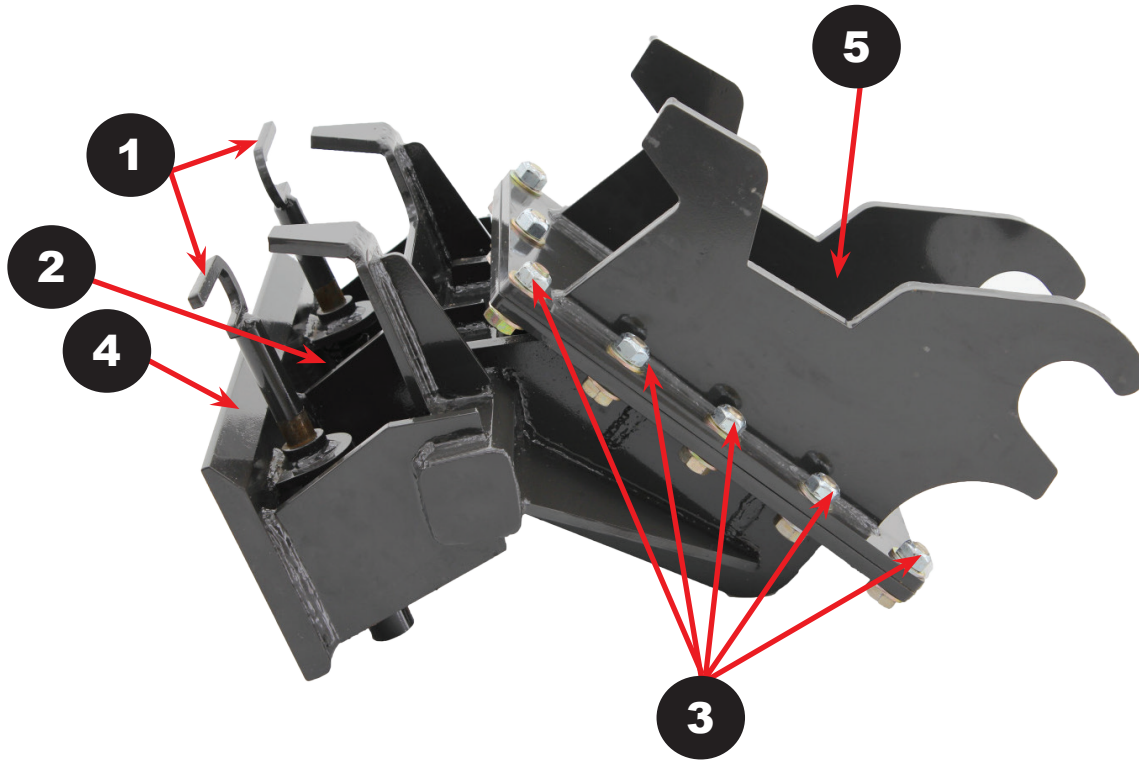
SAMPLE IMAGES ARE FOR REFERENCE ONLY AND MAY NOT FULLY REPRESENT YOUR PRODUCT.



Ref	Part Description	QTY
1	a. Right Side Latch Handle	1
	b. Left Side Latch Handle	1
2	Latch Bolts, Washers, Locknuts	VAR
3	Mount Bolts and Washers	VAR
4	Excavator Conversion Weldment	VAR
5	Excavator Conversion Mount	VAR
6	Sliding Pin Latch Assembly	VAR

7.2 MINI UNIVERSAL (DINGO, KUBOTA, OR DITCH WITCH) PART DIAGRAM

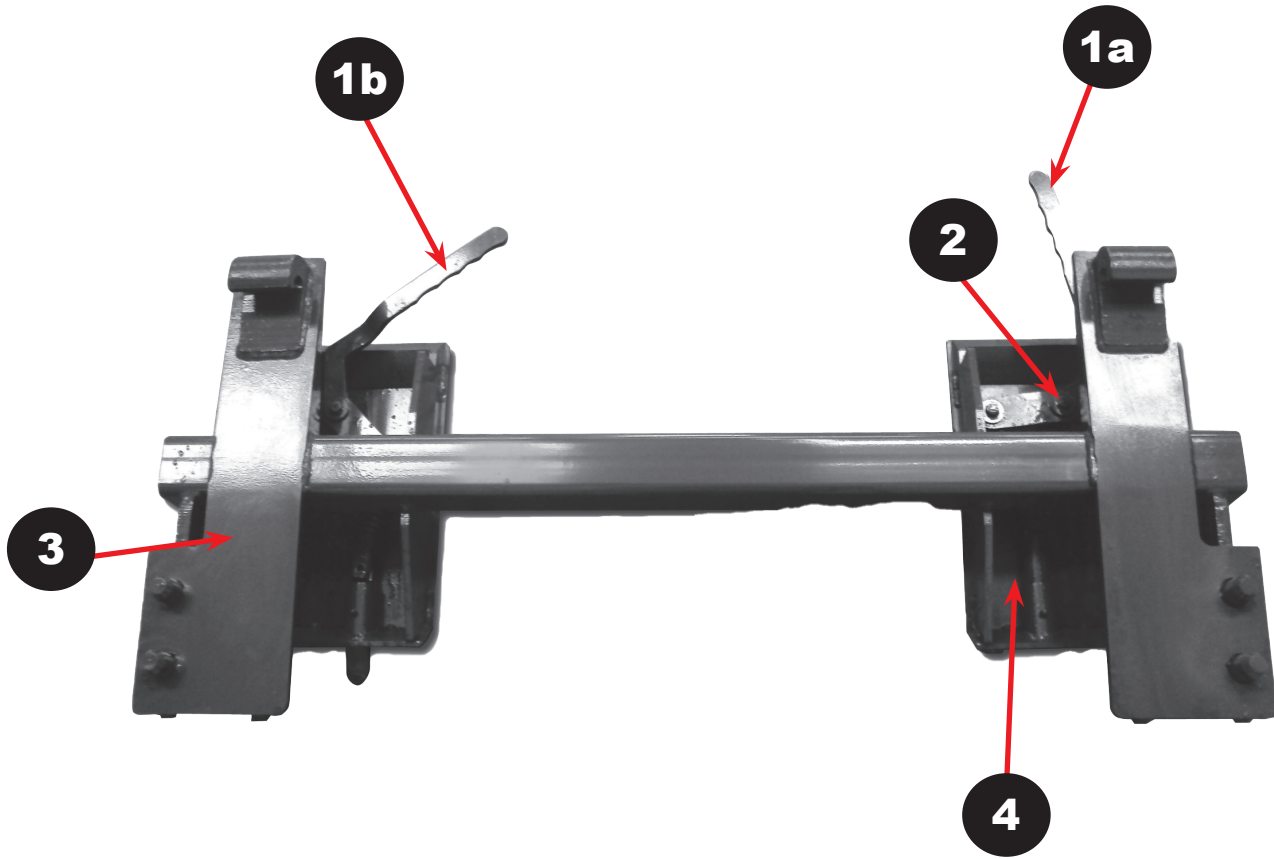
SAMPLE IMAGES ARE FOR REFERENCE ONLY AND MAY NOT FULLY REPRESENT YOUR PRODUCT.



Ref	Part Description	QTY
1	Latch Handle Assembly (Rollpins, Spring, etc.)	2
2	Mount Bolts, Washer, Locknuts	VAR
3	Bolts, Washers, Locknuts	VAR
4	Excavator Conversion Weldment	1
5	Excavator Conversion Mount	1

7.3 JOHN DEERE CONVERSION PART DIAGRAM

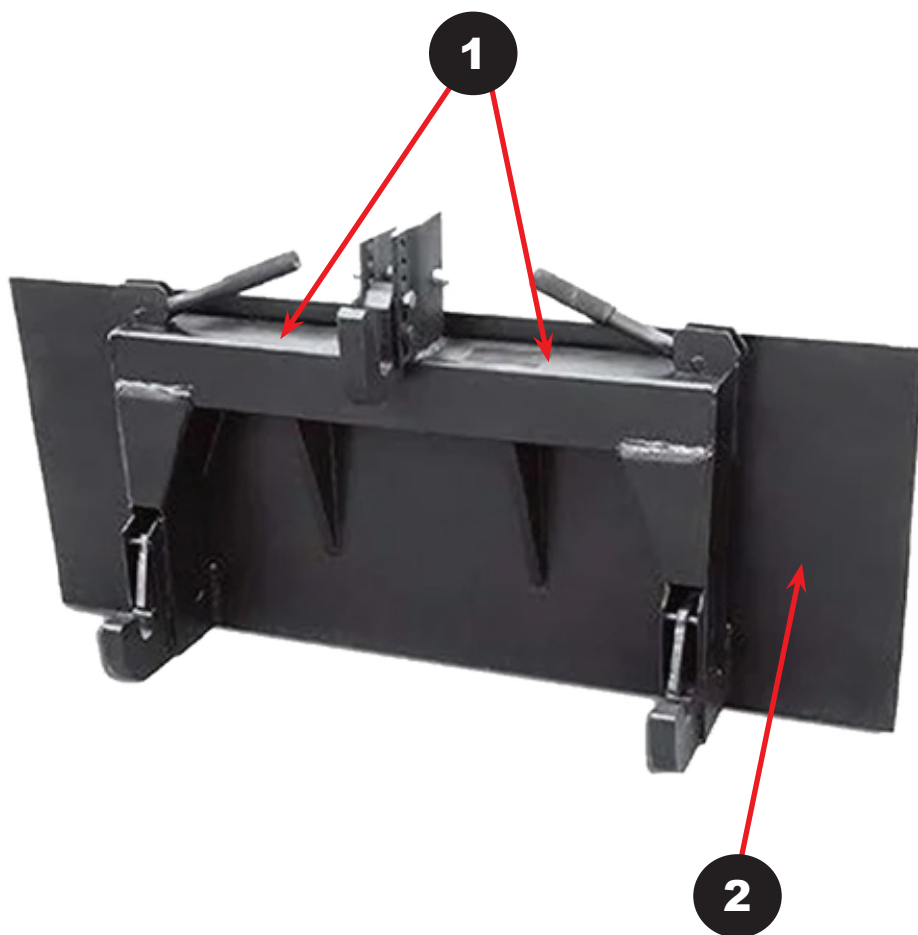
SAMPLE IMAGES ARE FOR REFERENCE ONLY AND MAY NOT FULLY REPRESENT YOUR PRODUCT.



Ref	Part Description	QTY
1	a. Right Latch Handle	1
	b. Left Latch Handle	1
2	Bolt	VAR
3	Tractor Conversion Weldment	VAR
4	Sliding Pin Latch Assembly	VAR

7.4 3 POINT RECEIVER HITCH PART DIAGRAM

SAMPLE IMAGES ARE FOR REFERENCE ONLY AND MAY NOT FULLY REPRESENT YOUR PRODUCT.



Ref	Part Description	QTY
1	Cat I or II Quick Hitch*	1
2	Quick Attach Plate	1

**This assembly comes as a fully welded assembly.*

SECTION 8

WARRANTY INFORMATION

LIMITED WARRANTY

Construction Implements Depot, Inc. (CID) products are warranted to be free from defects in workmanship or materials for a period of 12 months from the initial sale.

WARRANTY EXCLUSIONS

This warranty does not cover normal wear items, including but not limited to: bearings, hoses, blade holders, ground engaging parts such as teeth, blades, cutting edges, pilot bits, auger teeth and broom bristles. This warranty does not cover maintenance, service or adjustments. This warranty does not cover damage due to improper application or installation, misuse, negligence, accidents or improper maintenance. Please note: Any modification or customization made to your attachment may void its warranty. This warranty is void if any components have been disassembled, i.e., pumps, gear boxes or motors or the attachment has been used without the case drain attached (if applicable). Be sure to follow all recommended Horsepower and GPM requirements as outlined in product specifications, in order to prevent the warranty from being void. This warranty is contingent upon the use of approved BRAND parts exclusively. Any use of non-approved parts may result in voiding the warranty. Please be advised that the warranty does not cover refurbished attachments. Specially modified attachments built by the manufacturer to meet your needs shall not be warranted by CID, Inc.

REPAIRS UNDER WARRANTY

Any repairs, including welding, on attachments must be performed by certified repair technicians who have requested and obtained written approval from an authorized representative of CID before repairs begin. If you are completing the repair, you must also have prior written approval to prevent the warranty from being voided.

WARRANTY STATEMENT

Our obligation under this Limited Warranty shall be solely limited to repairing or replacing any part (see non-covered items above) that, according to our judgment, show evidence of a defect in quality of workmanship or

8.0 WARRANTY INFORMATION CONT.

materials for the stated 12 month warranty period. All defective parts must be routed directly to CID, Inc. with freight or delivery charges to be prepaid. This limited warranty shall not be interpreted to render CID, Inc. liable for any injury or damage to persons, businesses or property of any kind nor expenses or losses incurred for labor, supplies, substitute machinery rental or for any other reason. Repair or replacement parts are subject to the supply conditions at the time of repair or replacements, which may directly affect our ability to obtain material and/or replacement parts. CID, Inc. reserves the right to make improvements in design or changes in specifications at any time without incurring any obligations to owners of previously purchased products. No one but CID, Inc. is allowed to alter, modify or enlarge this warranty nor the exclusions, limitations and reservation at any time. CID, Inc. products are warranted to be free from defects in workmanship or materials for a period of 12 months from the initial sale.

Purchaser and Manufacturer hereby (a) submit to the non-exclusive jurisdiction of the courts of competent jurisdiction in North Carolina and Davidson County in which this company resides for resolution of any dispute concerning this Limited Warranty or the rights or obligations of Purchaser and/or Manufacturer; (b) agree that any litigation in connection with this Limited Warranty shall be venued in North Carolina and Davidson County in which the company resides and (c) waive any objection they may have as to any such action or proceeding brought in such court that such court is an inconvenient forum. Nothing herein shall limit the right of Purchaser or Manufacturer (or the right of any permitted successor or assign of either) to bring proceedings against the other in the courts of any other jurisdiction wherein any assets of such other party may be located.

8.1 WARRANTY RETURN AUTHORIZATION POLICY

WARRANTY RETURN AUTHORIZATION POLICY:

If repairs are required, a Return Material Authorization (RMA) number must be obtained for the defective part as well as proof of purchase. RMA and services are rendered by CID only. Any responsibility of shipping costs on any item returned for repair is at the discretion of CID, Inc.

All returned parts must have the following:

1. A legible RMA number written on the outside of the package.
2. Warranty Claim Form (online)
3. The defective part.

RMA numbers are only valid for 30 days from the date of issue. All shipped replacement parts will require a Parts Order (PO) number from the original CID, Inc dealer. Repairs not covered by the warranty, will be charged for parts and labor at the current pricing rate. Should you have any problems with your attachment, please follow the instructions listed on the following page.

8.2 WARRANTY PROCEDURE

WARRANTY RETURN AUTHORIZATION PROCEDURE:

1. Call the Warranty Department at (336) 859-2002 EXT 215. You will need to provide the model and serial number of the defective item(s) (see Appendix for where to find this information), a description of the problem, and have photographs available.
2. Upon a warranted issue, visit www.cidattachments.com, click on the warranty tab, and fill in the warranty information on the Warranty Claim Form.. CID, Inc will retain a Return Material Authorization (RMA) number of the defective part. If all the information above is completed CID, Inc will issue a RMA number via email..
3. Once you have an approved RMA number, a shipping label will be provided with CID's address and instructions for returning the defective part. **Appropriate RMA's/PO's will be invoiced and payment received while the evaluation process is being completed to prevent delays in your normal business operations. In the event the defective part(s) is un-warranted and repairs are not covered by the warranty, the customer will be invoiced for any additional parts and labor at the current pricing rate. If the part is deemed under warranty, a credit of the invoice will be issued.**
4. CID will ship a replacement part to the provided location or customer with a RMA identifier of some kind. **The customer is responsible for initial shipping charges until evaluation of the part has been completed.** If the part failure is covered by the warranty, the customer will be reimbursed for any paid shipping charges. In the event, the part is not covered by the warranty, the customer is responsible for return shipping.
5. Once the defective part is warranted by CID, the customer will be issued a credit and the PO number will no longer be active.
6. In the event CID decides that the attachment needs to be returned to them for repair, CID will make arrangements for pickup and return. Repairs will be performed by CID qualified technicians. Non-warranted issues will be discussed, and repairs will be performed upon the owner's agreement and receipt of payment for parts and labor.

SECTION 9

SAFETY ACKNOWLEDGMENT

ATTENTION ALL OPERATORS: Print your name, sign and date in the boxes below to acknowledge that you have read and fully understand the safety instructions presented in this manual, and have been trained on how to safely operate this attachment.

OPERATOR NAME	SIGNATURE	DATE

SECTION 10

MAINTENANCE LOGSHEETS

Use this log sheet to document all routine maintenance and repair services performed on this attachment.

DESCRIPTION OF MAINTENANCE/REPAIR	SERVICED BY:	DATE:



TRUSTED ATTACHMENTS



EST.

CID

2003

INDUSTRIAL QUALITY

**CONSTRUCTION IMPLEMENT DEPOT
DENTON-USA, LLC
1248 N. MAIN ST
DENTON, NC 27239**

www.CIDATTACHMENTS.COM



CIDHC-MANU-V2M0125