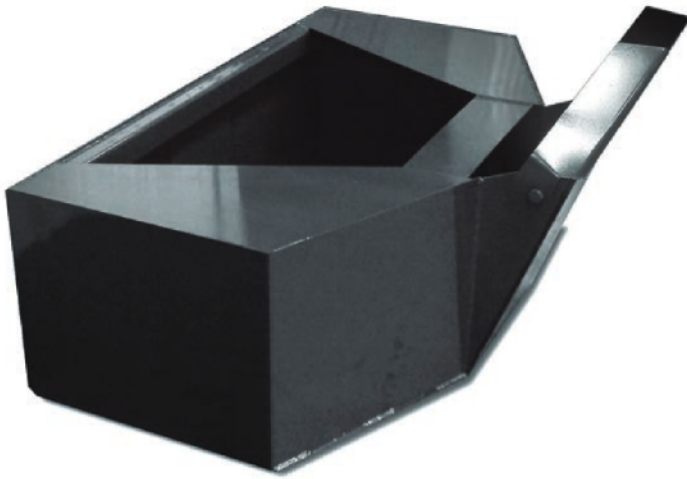




TRUSTED ATTACHMENTS

Concrete/Cement Bucket

Standard



Hydraulic

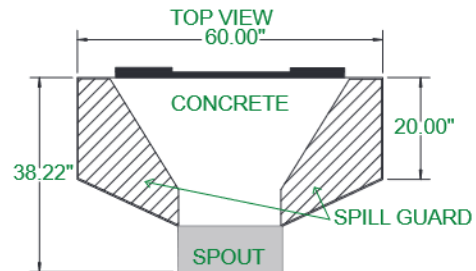
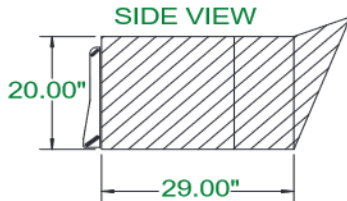


Our concrete bucket is designed for carrying and placing concrete using your skid steer. It allows you to accurately place concrete in areas inaccessible to trucks without any waste.

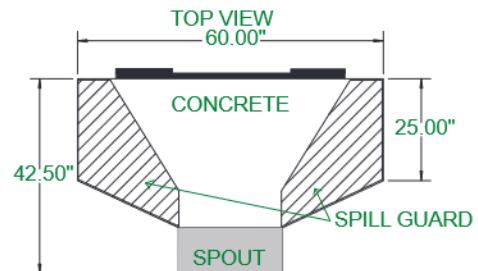
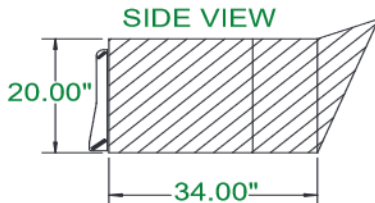
- 3/16 material
- Optional hydraulic chute
- Available in 1/2, 3/4 or 1 yard capacity

X-treme Concrete/Cement Bucket Specs

1/2 YARD
(standard)



3/4 YARD
(standard)



1 YARD
(hydraulic)

