

HYDRAULIC COUPLERS

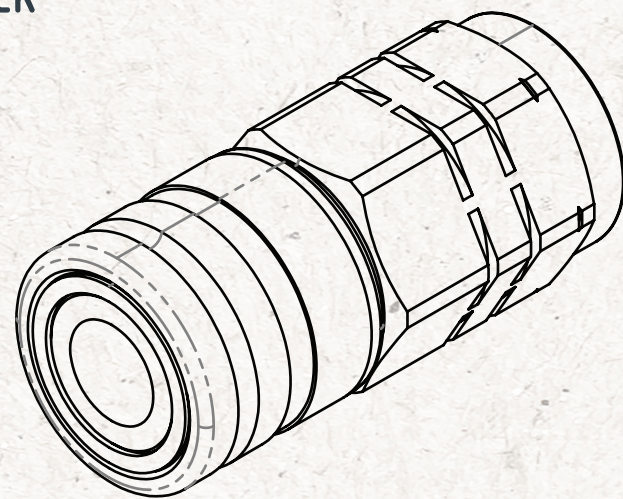
WILL IT FIT MY SKID STEER?

FLAT FACE COUPLERS

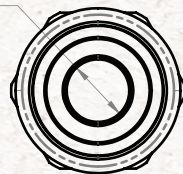
Flat face couplers are the standard couplers that most skid steers and mini excavators are equipped with.

1/2" COMMON
STANDARD
FLOW SIZE

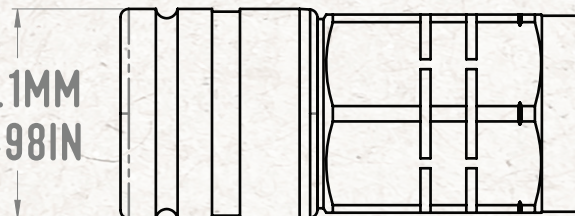
1/2" FEMALE
COUPLER



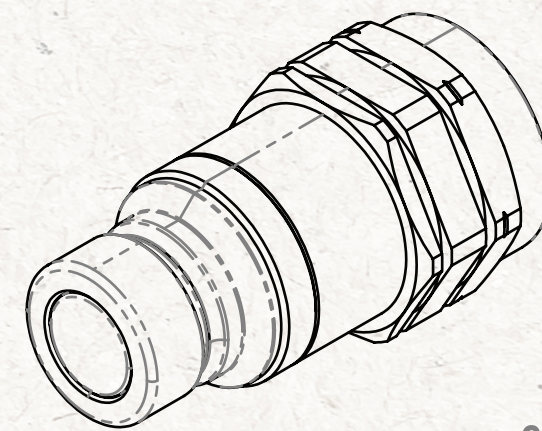
14.5MM
0.57IN



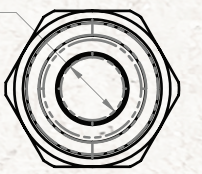
38.1MM
1.498IN



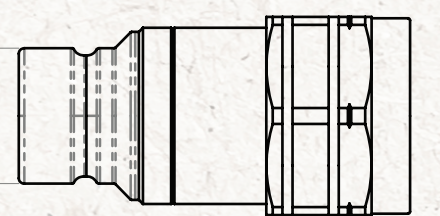
1/2" MALE
COUPLER



14.5MM
0.57IN

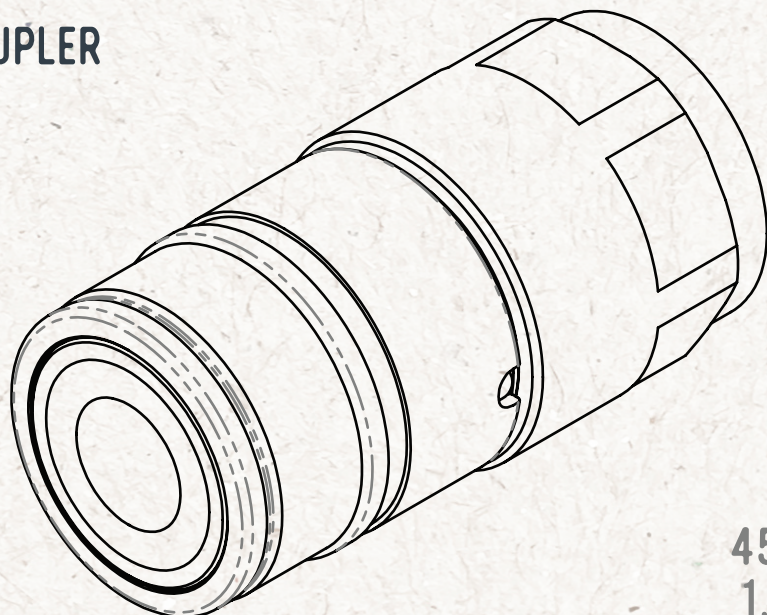


24.6MM
0.968IN



3/4" COMMON
HIGH FLOW SIZE

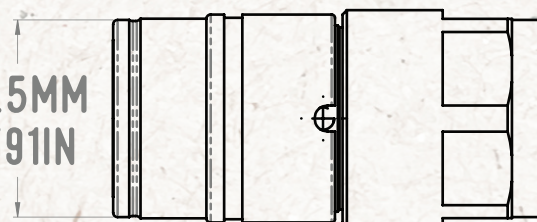
3/4" FEMALE
COUPLER



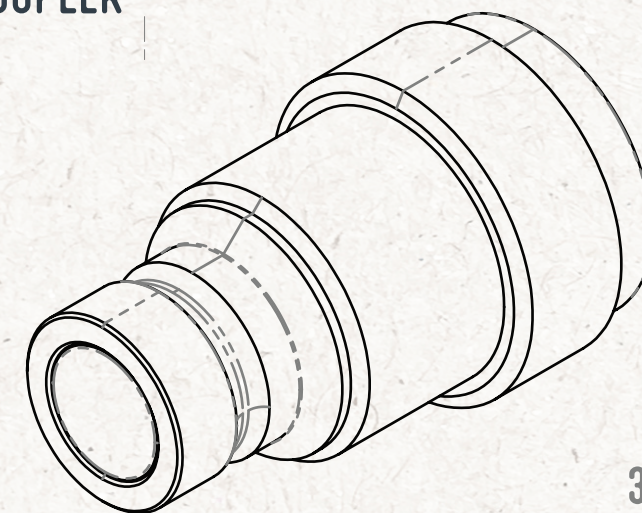
19.8MM
0.78IN



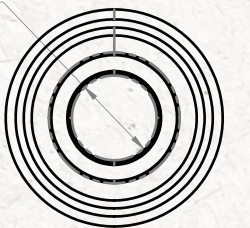
45.5MM
1.791IN



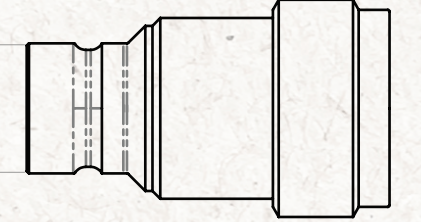
3/4" MALE
COUPLER



19.6MM
0.77IN

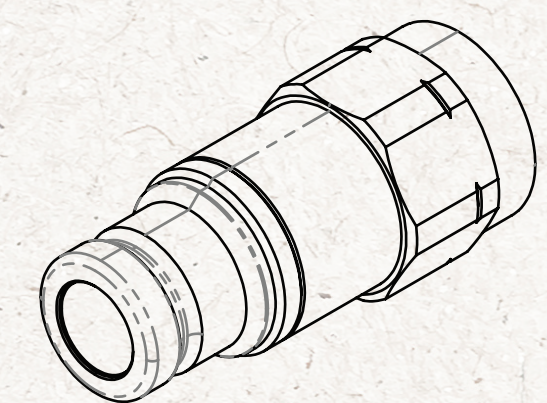


30.0MM
1.181IN

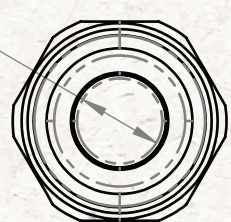


CASE DRAIN COUPLERS

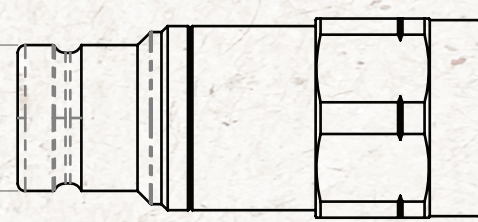
Case drains are required on some attachments to relieve excess oil pressure from the motor seals. On these attachments there is a third hydraulic hose with a smaller 3/8" body coupler.



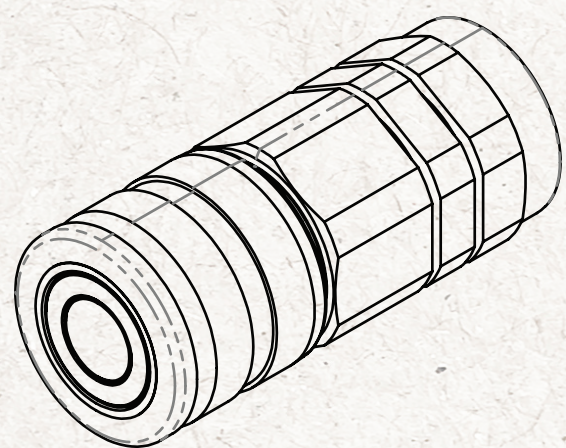
11.6MM
0.46IN



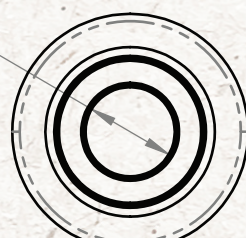
19.8MM
0.779IN



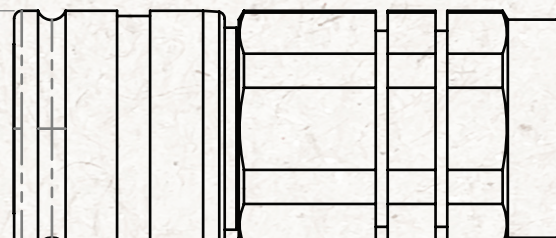
3/8" MALE COUPLER



12.1MM
0.48IN



32.0MM
1.260IN



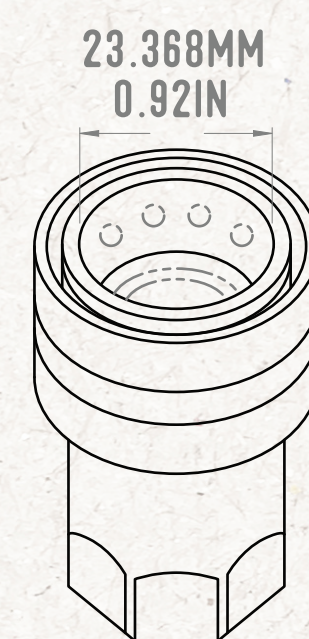
3/8" FEMALE COUPLER

Typically, high flow Skid Steers and Excavators are equipped with a Male 3/8" Body coupler as the case drain coupler. In this case, when you are buying an attachment, you will select the Female 3/8" Body coupler to go onto the attachment.

If your machine is equipped with a Female 3/8" body coupler instead, then you will need to specify a Male 3/8" body coupler when purchasing these attachments.

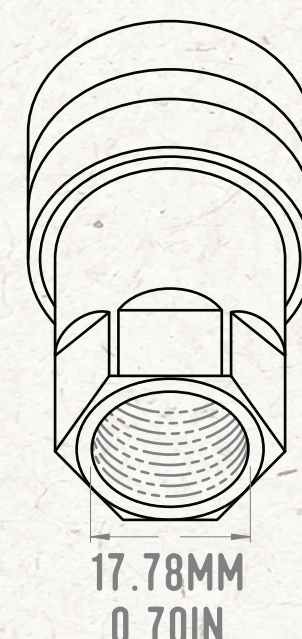
PIONEER COUPLERS

Pioneer style couplers are used on most machines made prior to 1996. Note: Ball & Couplers seats are interchangeable.



23.368MM
0.92IN

FEMALE COUPLER



17.78MM
0.70IN



20.066MM
0.79IN

MALE COUPLER



17.78MM
0.70IN

VIEW OUR
COMPLETE GUIDE
TO SKID STEER
ATTACHMENT
COMPATIBILITY:

