



IRONCRAFT

FLAIL MOWER



FL	
85	125
95	135
105	145
115	165

USE AND MAINTENANCE GUIDE

Read and understand the manual. This manual provides information and procedures to safely operate and maintain the Flail Mower.



Scan QR code for a digital version of this manual



September 2023

CONTENTS

INTRODUCTION	3
1.1 Welcome	3
1.2 Safe Operation	3
1.3 Specifications	4
1.4 Register This Product	5
SAFETY INFORMATION	6
2.1 Introduction	6
2.2 Safety Alert Symbols	7
2.3 Maintenance Safety	8
2.4 General Safety Instructions	9
SAFETY SIGNS AND LABELS	10
OPERATING PROCEDURES	11
3.2 Flail Mower Adjustment	12
3.1 Adjusting the Height	12
3.3 Regulating the Tension of the Driving Belt	13
3.4 Starting Up	14
MAINTENANCE PROCEDURES	15
4.1 Fluids and Lubricants	15
4.2 Maintenance	16
4.3 Storage Tips	17
4.4 Operation After Storage	18
ILLUSTRATED PARTS CATALOG	19
Limited Warranty	23
SAFETY ACKNOWLEDGEMENT FORM	24
MAINTENANCE LOG	26

WWW.IRONCRAFTUSA.COM

Revised September 22, 2023
©2023 IronCraft Attachments. All rights reserved.

INTRODUCTION

1.1 WELCOME

Congratulations on your choice of an IronCraft Flail Mower. This equipment has been designed and manufactured to meet the needs of discerning users. Many features incorporated into this mower are the result of suggestions made by customers like you.

Read this manual carefully to learn how to operate the Flail Mower safely and how to set it to provide maximum cutting efficiency. By following the operating instructions, in conjunction with a good maintenance program, your IronCraft mower will provide many years of trouble-free service.

1.2 SAFE OPERATION

Safe, efficient, and trouble-free operation of your Flail Mower requires that you, and anyone else who will be using or maintaining the unit, read and understand the information contained within the Owner's Manual. Use this manual for frequent reference and to pass on to new operators or owners.

Upon reading this manual, all users should sign the "Safety Acknowledgement Form" at the end of this manual. Please record your model and dealer information on page 5. You will be asked to provide this information when ordering parts or requesting service. If you need more information on this product, contact your local dealer or visit www.ironcraftusa.com.



WARNING **READ AND UNDERSTAND MANUAL.**

To prevent personal injury or even death, be sure you read and understand all of the instructions in this manual and other related OEM equipment manuals! The Flail Mower, if not used and maintained properly, can be dangerous to users unfamiliar with its operation. Do not allow operating, maintaining, adjusting, or cleaning of this mower until the user has read this manual and has developed a thorough understanding of the safety precautions and functions of the unit. This mower is designed for the specific purpose of pulverizing grass and short bramble. **DO NOT** modify or use this mower for any application other than that for which it was designed. Flail Mowers maintained or operated improperly or by untrained personnel can be dangerous; exposing the user and/or bystanders to possible serious injury or death.



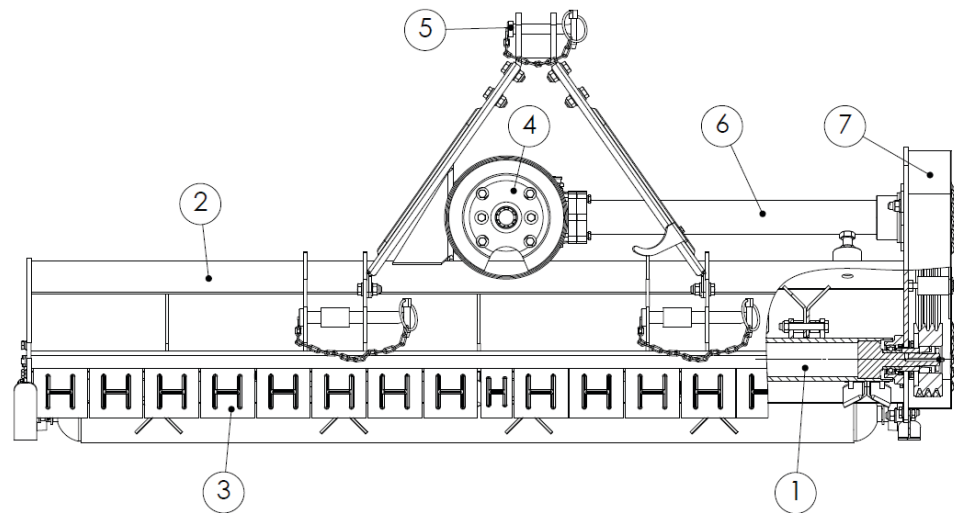
**STORE THIS MANUAL IN THE DOCUMENT
CANISTER ATTACHED TO THIS MACHINE.**



1.3 SPECIFICATIONS

FLAIL MOWER								
MODEL	FL 85	FL 95	FL 105	FL 115	FL 125	FL135	FL145	FL165
STRUCTURE WEIGHT	100kg	115kg	130kg	145kg	160kg	175kg	190kg	235kg
WORKING WIDTH	829mm	929mm	1029mm	1129mm	1229mm	1329mm	1429mm	1629mm
PTO TURNING SPEED	540r/min	540r/min	540r/min	540r/min	540r/min	540r/min	540r/min	540r/min
FLAIL TYPE	Y Blade/Hammer							
NUMBER OF HAMMER OR Y BLADE (X2)	12	14	14	16	20	24	24	24
TRACTOR HP	14-18hp	16-20hp	20-30hp	20-30hp	25-35hp	25-35hp	25-35hp	30-40hp

Specifications subject to change without notice.



REF	MAIN COMPONENTS
1	Rotor
2	Machine frame
3	Guard plates
4	Gearbox assembly
5	3-pt hitch
6	Transmission shaft
7	Side belts transmission

1.4 REGISTER THIS PRODUCT

PURCHASE DATE

DEALER NAME

ADDRESS

PHONE NUMBER

MODEL

SERIAL



"WHY WOULD I WANT TO REGISTER MY MACHINE?" YOU ASK. IT'S A VALID QUESTION. WE USED TO ASK OURSELVES THE SAME THING...

You need to register your new product within 30 days of delivery. Without registration, your warranty claims will not be honored.

Registering your machine means you get the full benefits of the warranty terms we offer.

Scan this code for an easy-peasy registering process. You'll be glad you did.



<https://www.ironcraftusa.com/warranty/register-warranty/>

SAFETY INFORMATION

2.1 INTRODUCTION

The Flail Mower consists of a rotating shaft with many blades attached to it. The blades cut the grass while traveling over the working area. Rotational power to the shaft is provided by the tractor PTO through the gearbox in the center of the machine.

The Flail mower attaches to the 3 point hitch on the tractor.

The following terms are used interchangeably throughout this manual.

FLAIL MOWER	OPERATOR
implement, attachment, product, machine, equipment, mower	user, personnel

The Flail Mower is designed and manufactured with safety in mind. However, improper use and operator error can result in death or serious injury. It is important that you read and fully understand the safety instructions and operating procedures presented in this manual before operating this mower. Accident prevention is a combination of good judgement, common sense, awareness and proper training!



BEFORE YOU OPERATE THIS FLAIL MOWER:

1. KNOW how to safely operate your tractor.
2. READ and UNDERSTAND the safety instructions and operating procedures contained in this manual.
3. ACKNOWLEDGE your understanding of all safety instructions presented in this manual by signing the "Safety Acknowledgement Form" at the end of this manual.

Although every effort has been made to ensure a safe product, every possible circumstance that could pose a potential hazard cannot be anticipated. The safety warnings in this manual and on this product, are therefore not all-inclusive.

In addition to the safety messages presented in this section, you must also read and understand the safety messages presented in the other sections of this manual.

2.2 SAFETY ALERT SYMBOLS



This is the safety alert symbol and will be accompanied with a descriptive pictorial. It is used to alert you to potential personal injury hazards. Obey all safety messages that follow this symbol to avoid possible injury or death.

This manual contains DANGERS, SAFETY INSTRUCTIONS, CAUTIONS, IMPORTANT NOTICES, and NOTES which must be followed to prevent the possibility of improper service, damage to the equipment, personal injury, or death. The following key words call the readers' attention to potential hazards. Hazards are identified by the "Safety Alert Symbol" and followed by a signal word such as "DANGER", "WARNING", or "CAUTION".



DANGER

Indicates an imminently hazardous situation which, if not avoided, will result in death or serious injury. This signal word is limited to the most extreme situations.



WARNING

Indicates a potentially hazardous situation which, if not avoided, could result in death or serious injury.



CAUTION

Indicates a potentially hazardous situation which, if not avoided, may result in minor or moderate injury.

NOTICE

Indicates that equipment or property damage can result if instructions are not followed.

SAFETY INSTRUCTIONS

Safety instructions (or equivalent) signs indicate specific safety-related instructions or procedures.

Note: Contains additional information important to a procedure.

2.3 MAINTENANCE SAFETY

The maintenance procedures described in this manual should only be carried out by qualified mechanics who have been trained to repair this machine.

Some procedures require special tools and skills to complete. DO NOT attempt to repair or perform service work on this machine unless you have the skills and tools to do so. Contact your local dealer for maintenance and repair services.

NOTICE

Improper maintenance or modifications to the design or performance of this machine will void the warranty. ONLY use genuine IronCraft replacement parts on this machine.

SAFETY INSTRUCTIONS

Obey the following safety instructions when servicing or repairing this machine.



WEAR

proper Personal Protective Equipment (PPE) while working on this machine, which may include safety glasses, hard hats, steel toe boots, gloves, etc.



WEAR

a welding helmet when welding to protect your eyes, face and neck from flash burn, ultra-violet radiation and heat.



ENSURE

all jack stands, lifts and hoists are in good working condition and have the rated load capacity to support the load.



SERVICE

If servicing is performed while the mower is attached to the tractor, turn engine off, set parking brake and chock wheels to prevent tractor from moving.



ONLY

perform service work in a well-lit area.



ALLOW

the machine to cool down before servicing this machine. Hot oils can burn your skin.



NEVER

work under an unsupported mower.

PERSONAL PROTECTIVE EQUIPMENT (PPE) REQUIREMENTS



All operators should wear hearing protection, safety glasses, hand protection and dust mask while operating this machine.

2.4 GENERAL SAFETY INSTRUCTIONS

Below are general safety instructions that relate to the overall operation and maintenance of this machine. It is important that you read and understand each message to prevent serious injury or death.



THIS MACHINE

is designed for pulverizing grass and short bramble, and shall be used in the indicated purpose. You take the responsibility if the machine is used in any other purposes.



FOR SAFETY

of personnel and good performance of the machine, you shall check the performance of the machine and the tractor before starting the machine.



ALL PERSONS

and animals shall keep away the machine when you start it.



THE OPERATOR

shall not put on loose clothes during operating the machine.



DO NOT TOUCH

the rotor when the machine rotates.



KEEP AWAY

from the machine when it moves.



WHEN THE TRACTOR

and the machine are moving on the road, always keep the machine off.



BEFORE REPAIRING

the machine, stop all movable parts and the tractor, keep the key with yourself.



ALWAYS KEEP

the machine in a good state, if necessary, repair or change the defective parts.



DON'T USE

the machine to transport personnel.



DON'T MODIFY

the machine.



PAY ATTENTION

to the sharp and pointed parts during repairing the machine.



ALL PROTECTIVE PARTS

shall be guaranteed to be in good state before starting the machine.



DON'T LEAVE

the tractor when moving the machine; and always take away the key of the tractor with you.



THE MACHINE

shall be operated in the recommended speed.



DON'T STAY

between the tractor and the machine.

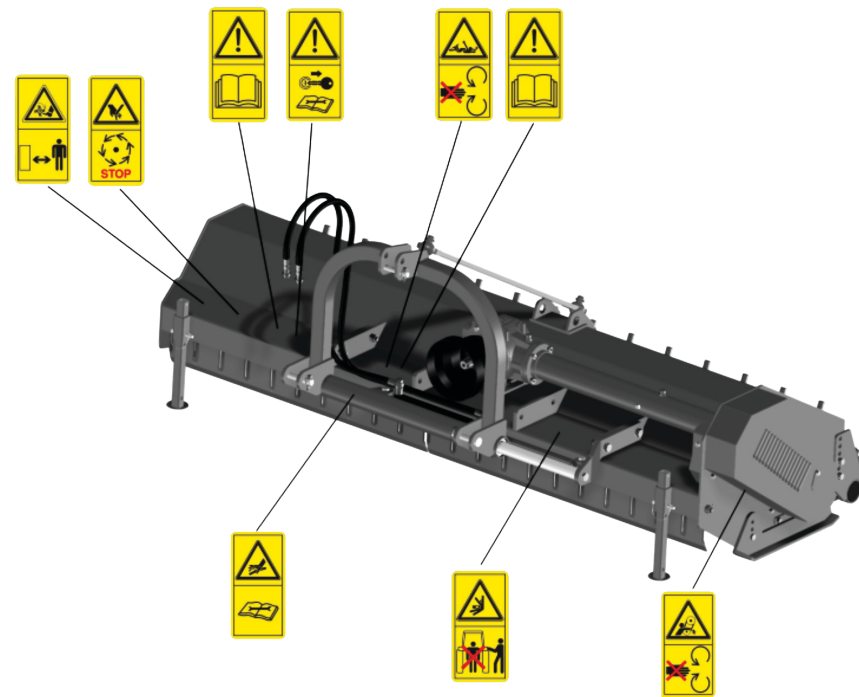


DON'T START

the machine in a closed place (due to the smoke from the tractor).

SAFETY SIGNS AND LABELS

The types of safety signs and locations on the equipment are shown in the illustrations that follow. Good safety requires that you familiarize yourself with the various safety signs, the type of warning and the area, or particular function related to that area, that requires your safety awareness.



SAFETY INSTRUCTIONS

- Decals must be kept clean and legible at all times.
- Operators must inspect the machine for safety decals.
- Replace missing, worn or damaged decals immediately.
- Use care when cleaning the machine. When using a hot pressure washer make sure water jet is not too close to the decal as this may cause the decal to peel.
- When replacing parts, be sure safety decals are in place prior to using the machine.
- Make sure metal surface is dry and free of dirt and grease before applying a new decal to this machine.
- Contact your local dealer to order replacement decals.

OPERATING PROCEDURES

Ensure your tractor is in good operating condition. Before operating the machine, the following areas should be checked off:

REQUIREMENTS	
Before starting up the machine, check and lubricate all grease points, all lubricated parts inside the machine.	✓
Use only an agricultural tractor of horsepower within limits of the machine specified.	✓
Check that the machine is properly attached to the tractor. Be sure retainers are used on the mounting pins.	✓
Be sure extra weights are mounted on the front of the tractor.	✓
Check the oil level in the gearbox. Add as required.	✓
Check that the tractor PTO shaft turns freely and that the machine driving shaft can telescope easily.	✓
Check the blades. Be sure they are not damaged or broken and swing freely in their mount. Repair or replace as required.	✓
Check and tighten the blade bolts.	✓
Check for entangled material in all rotating parts. Remove this material.	✓
Install and secure all guards, doors and covers before starting.	✓
Before installing the universal joint, the tractor and the machine motor shall be stopped and the key be taken away. The universal joints shall be installed in good state, with proper protective parts.	✓
Check to make sure the chain on the driveline is in good condition and attached. If damaged, replace.	✓
Clear the area of spectators before engaging the PTO. Keep the PTO at 540 RPM.	✓
Before cleaning, repairing and lubricating the machine, stop the motor and take away the key with you.	✓
When the universal joint is not connected with the tractor, they must be connected again through the frame to protect the joint from damaging.	✓
Don't approach the machine when the machine runs.	✓

Follow the operating instructions in your tractor operator's manual.



CAUTION

Be familiar with the machine before starting. Read this manual carefully to learn how to operate the machine safely and how to set it to provide maximum field efficiency.

NOTICE

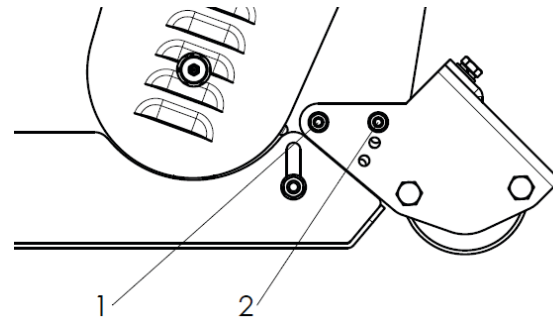
Only use universal joint conforming to CE standard and protect them properly.

3.1 ADJUSTING THE HEIGHT

To get the most out of your flail mower, it should be set within the recommended height.

To save fuel and power, and reduce wear and tear, the cutting height must be regulated correctly.

When adjusting the working height, loosen bolt (1), remove bolt (2) on both sides; The roller height (see following drawing) can be adjusted by aligning the selected hole in the roller support bracket at position 2. The lowest hole is the highest working height; put the bolt (2) into the selected hole; tighten bolt (1).



3.2 FLAIL MOWER ADJUSTMENT

1. On a flat piece of ground, attach the Flail Mower to the Tractor using the three point linkage
2. Use a solid adjustable top link
3. Lower the three point linkage to its lowest position
4. With the roller at the rear in contact with the ground, adjust the length of the top link so that the lower edge at the side of the flail mower is parallel with the ground
5. Rotate the blade drum by hand so that a row of blades hang vertically towards the ground.
6. Measure the clearance between the bottom of the extended blades and the ground.
 - Minimum 50mm
 - Note in rough or lumpy paddocks the clearance needs to be increased to ensure that the blades don't impact the ground in operation.
7. Adjust the roller height to increase or decrease the blade clearance as required
8. Go through steps 4 to 7 until the required clearance is achieved.

Note: When the Flail Mower has been set up with the required tolerances: Operate the Flail Mower with tractor in low range and the PTO delivering 540 RPM.

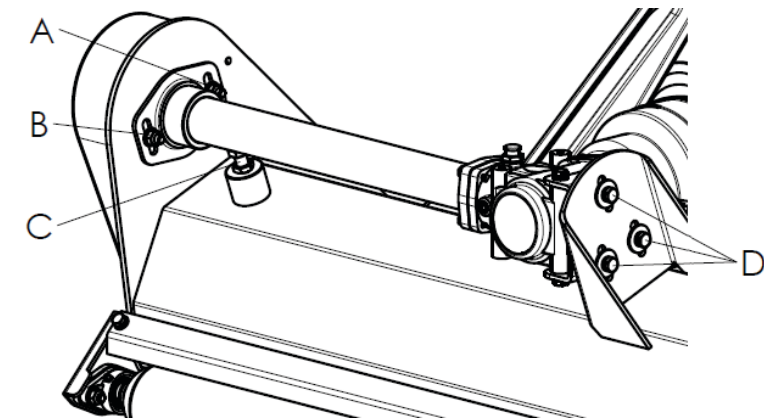
3.3 REGULATING THE TENSION OF THE DRIVING BELT

NOTICE

The machine shall always stand still for regulating the tension.

Remove the driving belt cover.

1. Loosen the Screw A and B that locks the support shaft and loosen the counter nut C.
2. Loosen the screws that lock the gear box on the mounting plate D.
3. Adjust the drive belt tension. The correct belt tension is achieved when the belt can be deflected by the belt thickness about 10mm at the center point between the pulleys.
4. Align the gearbox so the drive shaft is parallel with the body.
5. Use a straight edge to make sure the belt pulleys are in line and running true. If misaligned call your dealer or service agent for technical support.



3.4 STARTING UP

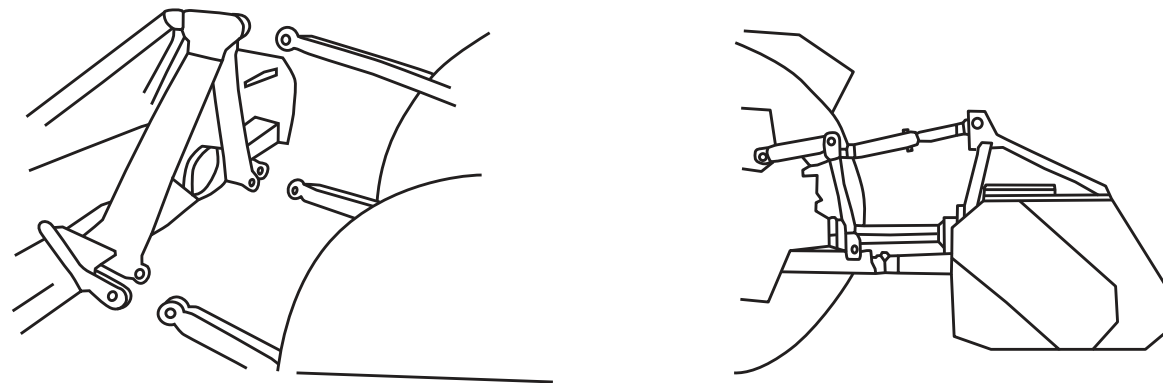
Before starting the machine, control and adjust the following items:

- Tension of trapezoidal driving belt
- Oil level of gear
- Point of lubrication
- All bolts, nuts and screws

NOTICE

When transferring the moving state of the machine to the working state, do not stand between the machine and the tractor.

The machine coupling is equipped with 3 pins so that the machine can be coupled with all tractors with universal coupling with 3 pins. Each telescopic pole on the machine can be adjusted properly according to the type of the tractor. Keep the Flail mower away the tractor with a certain distance. The universal joint shall be tense and the largest distance in the closed state shall be 5/10 cm.



Moving the lifting arm, and putting it between axes, insert the joint pins and fix them with pins. Fix the lifting arm with chain and tensioning device so as to prevent lateral movement of the machine. Connect the universal joint to the PTO shaft of the tractor on the side of the tractor. In any event, it cannot produce a collision in any position. While connecting 3 points, pay attention to that the PTO shaft of the tractor shall be parallel with the ground. It is very important to keep the machine driving axle and the PTO shaft of the tractor in parallel.

Note: The machine shall be lifted from the ground before moving the machine.

MAINTENANCE PROCEDURES

4.1 FLUIDS AND LUBRICANTS

FLUIDS AND LUBRICANTS	
GREASE	Use multi-purpose lithium based grease.
GEAR BOX OIL	Use N46 drive & hydraulic dual-purpose oil or equivalent for all operating conditions.
GEAR BOX CAPACITY	0.85 liter
STORING LUBRICANTS	Your machine can operate at top efficiency only if clean lubricants are used. Use clean containers to handle all lubricants. Store them in an area protected from dust, moisture and other contaminants.
GREASING	Use a hand-held grease gun for all greasing.
	Wipe grease fitting with a clean cloth before greasing, to avoid injecting dirt and grit.
	Replace and repair broken grease fitting immediately.
	If grease fittings will not take grease, remove and clean thoroughly. Also clean lubricant passageway. Replace fitting if necessary.

4.2 MAINTENANCE

NOTICE

All maintenance, repairing, cleaning and lubricating shall be conducted when the tractor and motor are stopped and the key is taken away.

By following a careful service and maintenance program for your machine, you will enjoy many years of trouble-free operation.

The period recommended is based on normal operating conditions. Severe or unusual conditions may require more frequent maintenance.



WARNING

The operator shall put on gloves and use suitable tools before changing blade.

8 HOURS OR DAILY MAINTENANCE

Check and screw all nuts and bolts in connection parts.	✓
Check the blade and fixing parts every day and replace the damaged parts if they are found damaged. Don't install damaged, worn and unbalanced blade. New sleeve shall be used to replace the worn fixing parts on the blade.	✓
Check the oil in gearbox. Fill them up to line if it's necessary.	✓
Press grease in each oil fitting three to five times.	✓
Clean the implement; take away all grass and mud.	✓

MAINTENANCE LOG

Document all maintenance and service activities performed on this machine using the maintenance log included at the end of this manual.

4.3 STORAGE TIPS

- The machine inside and outside shall be cleaned carefully so as to avoid corrosion.
- Don't spray water on the rolling bearing if you clean the machine with high pressure sprayer.
- Check and clean the universal joint and drive belt press roller. Replace if worn or damaged.
- Spread oil on all parts required.
- Repaint any parts showing bare metal to prevent corrosion while storing.
- Store the machine in a dry, level area. Support the frame with planks if require.

To get years of quality use out of your equipment, follow these tips when storing your equipment:



THOROUGHLY WASH

The machine inside and outside shall be cleaned carefully so as to avoid corrosion.



DON'T

spray water on the rolling bearing if you clean the machine with high pressure sprayer.



CHECK & CLEAN

the universal joint, driving belt press roller, or replace them if they are not in good state.



CHECK & CLEAN

the universal joint and drive belt press roller. Replace if worn or damaged.



REPAINT

any parts showing bare metal to prevent corrosion while storing.



STORE

Store the machine in a dry, level area. Support the frame with planks if require.

4.4 OPERATION AFTER STORAGE

Before the machine is started up, check the following items regularly:

- 1 Check oil level and add it if not enough.
- 2 Check and tighten all screws and nuts.
- 3 Check the regulated state of the machine.
- 4 Check the blade state.
- 5 Check the air hole on the gearbox. If it is blocked, clean or open the hole with compressed air.
- 6 Don't spread oil or grease on the driving belts. If there is oil or grease on the belts, wipe the belts, in case the belt sliding and wearing occur.

NOTICE

Check the machine every 10 hours. Repair the damaged parts or replace the blade according to the manufacturer's recommendation, to keep the machine balancing.



CHECK

all tightening parts and replace them if necessary.



DON'T RUN

the machine without the safety guarding. Removal of guarding may result in bodily injury and/or damage to the machine.

NOTICE

Stop the machine and check the blades. If a blade or blades are broken or damaged replace with the same blade part number.

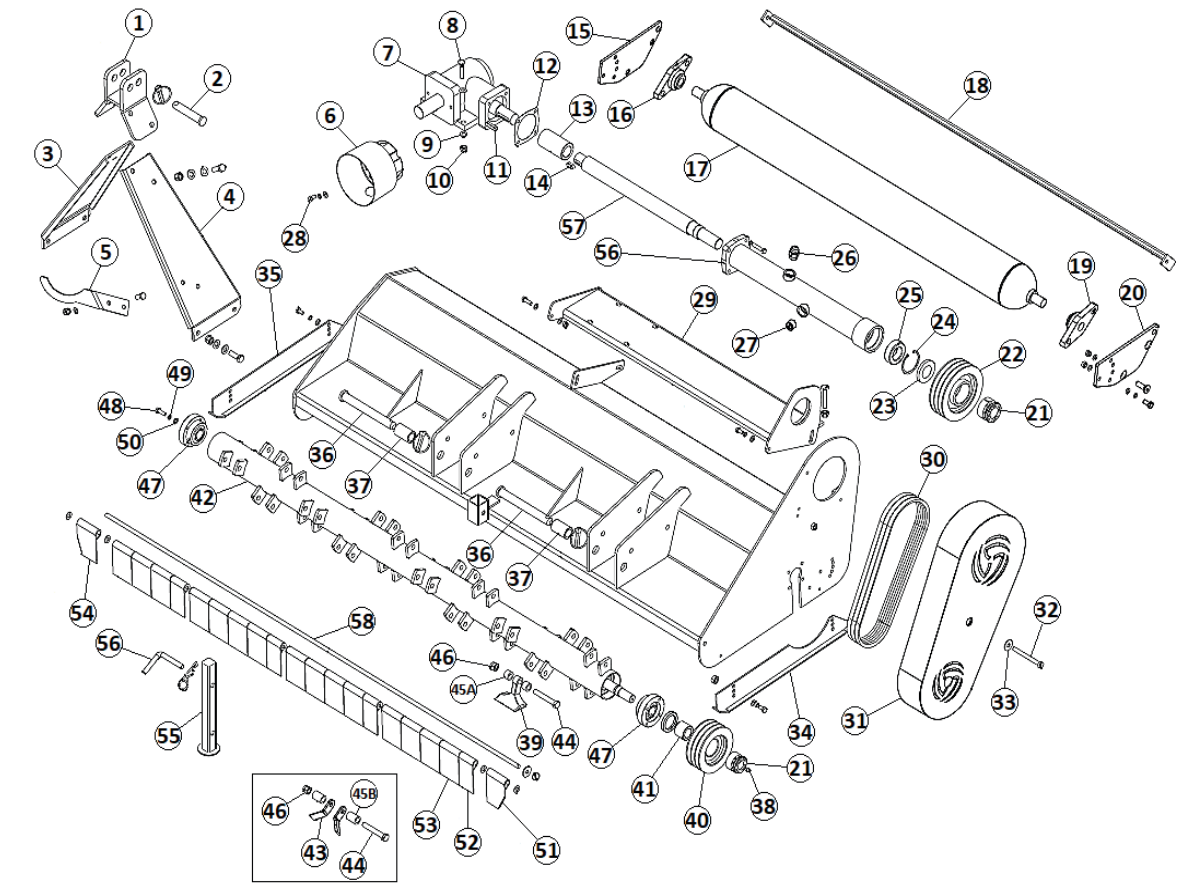
ILLUSTRATED PARTS CATALOG

The manual contains a parts list for your machine. It is divided into major sections, which correspond to the groups shown in the Table of Contents and the accompanying illustration.

The first page of each major section lists the contents of that section, each of which consists of exploded views and related tabular listings.

WHEN ORDERING PARTS

Always give your dealer the Model of your machine to assist him in ordering and obtaining the correct parts. Use the exploded view and tabular listing of the area of interest to exactly identify the required part.



FL135-FL165 COMPONENTS

REF	CODE	DESCRIPTION	QTY.
1	EF1001	TOP LINK BRACKET	1
2	EF1002	TOP LINK PIN	1
3	EF1005	RH A-FRAME	1
4	EF1004	LH A-FRAME	1
5	EF1006	HOOK	1
6	EF1053	PTO SHIELD	1
7	EF1054	GEARBOX	1
8	EF1055	HEX BOLT M10 X 35	4
9	EF1031	WASHER M10	4
10	EF1039	HEX NUT M10	4
11	EF1052	KEY 10 X 45	1
12	EF1051	HOUSING GASKET	1
13	EF1050	CONNECTOR BUSHING	1
14	EF1049	KEY 10 X 30	1
15	EF1056	RH CONNECTOR PLATE	1
16	EF1057	BEARING L204	1
17	EF1058	ROLLER WELDMENT (FL135)	1
	EF1059	ROLLER WELDMENT (FL165)	
18	EF1061	SCRAPER	1
19	EF1057	BEARING L204	1
20	EF1060	LH CONNECTOR PLATE	1
21	EF1028	POWER LOCK 05 TYPE 25 X 50	2
22	EF1041	UPPER PULLEY	1
23	EF1042	OIL SEAL 30 X 62 X 10	1
24	EF1043	SNAP RING 62	1
25	EF1044	BEARING 6206-1RS	1
26	EF1045	BREATHER PLUG	1
27	EF1062	PLUG 3/8" - 19	1
28	EF1040	HEX BOLT M8 X 10	2
29	EF1038	GEARBOX BRACKET	1
30	EF1034	BELT A930 - AV13X930LI	3
31	EF1032	SIDE BELT COVER	1
32	EF1033	HEX BOLT M10 X 80	1
33	EF1017	LARGE WASHER	3
34	EF1030	LH SKID SHOE	1

REF	CODE	DESCRIPTION	QTY.
35	EF1037	RH SKID SHOE	1
36	EF1036	LOWER LINK PIN	2
37	EF1035	LOWER LINK BUSHING	2
38	EF1029	GREASE ZERK M6	2
39	EF1022	HAMMER BLADE	24
40	EF1027	LOWER PULLEY	1
41	EF1026	BUSHING	1
42	EF1024	ROTOR WELDMENT (FL135)	1
	EF1025	ROTOR WELDMENT (FL165)	
43	EF1021	Y-BLADE	24
44	EF1023	HEX BOLT M12 X 80	24
45A	EF1020	BUSHING FOR HAMMER BLADE	48
45B	EF1019	BUSHING FOR Y-BLADE	48
46	EF1003	HEX NUT M12	48
47	EF1010	BEARING UC205 WITH SEAT	2
48	EF1007	BOLT M8 X 25	8
49	EF1008	SPRING WASHER M8	8
50	EF1009	WASHER M8	8
51	EF1013	LH END FRONT PLATE	1
52	EF1016	LH INSIDE FRONT PLATE	1
53	EF1012	FRONT CENTER PLATE	10
54	EF1011	RH END FRONT PLATE	1
55	EF1015	FOOT STAND	1
56	EF1046	TRANSMISSION SHAFT HOUSING (FL135)	1
	EF1047	TRANSMISSION SHAFT HOUSING (FL165)	
57	EF1048	TRANSMISSION INNER SHAFT	1
58	EF1018	FRONT PLATE ROD	1



EF1080 - COMPLETE DRIVELINE



DECLARATION OF CONFORMITY

2006/42/CE e D.lgs. 17/2010

MANUFACTURER: COSMO Srl
ADDRESS: Via Laghi di Avigliana, 117 12022 BUSCA (CN) ITALY
DESCRIPTION: Light duty flail mower
BRAND: RABBIT
MODEL: FL-85/ FL-95/ FL-105/ FL-115/ FL-125/FL-135/FL-145/FL-165
REGULATIONS: 2006/42/EC
EN 12100: 2010

COSMO SRL Busca 20-01-2017
 Via Laghi di Avigliana, 117 12022 BUSCA (CN) ITALY www.cosmosrl.com
 Distributed by and customized for: IronCraft

LIMITED WARRANTY

IronCraft (the Manufacturer) warrants, only to the original Purchaser, this equipment will be free from defects in material and workmanship, under normal use and service, for one (1) year from the date of purchase providing this equipment is purchased for individual use only. **Commercial use of this equipment is not covered under any warranty.** This warranty does not apply to any equipment which has been damaged or which has been subjected to change, misuse, negligence, abnormal wear and tear, alterations, tampering, or failure to follow operating instructions. This warranty does not cover any product or parts not manufactured by IronCraft.

IronCraft flail mowers have a five (5) year Limited Warranty* on gearbox components provided they have been properly maintained** and have not been subjected to abuse or misuse except as limited below.

*** Gearbox warranty limitations:**

- i. Warranty is one (1) year for seals unless seals are damaged from debris wrapped around the input and or output shaft of the gearbox. After one year, seals are considered to be wearing parts, and the replacement is the owner's responsibility.
- ii. Gearboxes that are subject to warranty may be replaced with new or rebuilt gearboxes at the discretion of IronCraft
- iii. **Shearbolts must be approved Grade 2 , 1 / 2 " x 3 " shearbolts.**

****NOTE : "properly maintained" specifically includes, but is not limited to:**

- i. Running gearboxes with the proper amount of correct lubricant.
- ii. Adjusting slip clutches correctly to provide proper protection for gearbox components and drive line.

Under this warranty, the Manufacturer will repair or replace any part which the Manufacturer determines has failed during the period of the warranty due to defects in material or workmanship. After written approval by the manufacturer, the equipment or defective part must be returned to IronCraft.

Warranty coverage and performance is expressly conditioned upon the return of the completed registration form to: IronCraft, 7 Rocky Mt Rd, Athens, Tennessee 37303. Registration can be found on our website www.ironcraftusa.com

IronCraft reserves the right to make improvements and changes in specifications without notice or obligation to modify previously sold units. The Owner's Manual describes the proper assembly procedures for your implement and furnishes operating and maintenance recommendations to help you obtain long and satisfactory service.

PURCHASER'S EXCLUSIVE REMEDY FOR BREACH OF WARRANTY, OTHER DEFECT, OR CONDUCT GIVING RISE TO LIABILITY SHALL BE THE REPAIR OR REPLACEMENT OF THE PRODUCT SOLD, AND THE MANUFACTURER UNDER NO CIRCUMSTANCES SHALL BE LIABLE FOR ECONOMIC LOSS OR INCIDENTAL OR CONSEQUENTIAL DAMAGES. THE MANUFACTURER DISCLAIMS ALL IMPLIED WARRANTIES, INCLUDING THE WARRANTY OF MERCHANTABILITY AND FITNESS FOR PURPOSE.

Purchaser and IronCraft hereby (a) submit to the non-exclusive jurisdiction of the courts of competent jurisdiction in Meigs County, Tennessee, and the United State District Court for the Eastern District of Tennessee for resolution of any dispute concerning this Limited Warranty or the rights or obligations of Purchaser and/or IronCraft; (b) agree that any litigation commenced in Tennessee in connection with this Limited Warranty shall be venued in either the Meigs County, Tennessee District

Court, or the United States District Court, Eastern District of Tennessee, Southern Division, and (c) waive any objection it may have as to any such action or proceeding brought in such court that such court is an inconvenient forum. Nothing herein shall limit the right of Purchaser or IronCraft (or the right of any permitted successor or assign of either) to bring proceedings against the other in the courts of any other jurisdiction wherein any assets of such other party may be located.

REGISTER

This registration form must be filled out within 30 days of delivery to the purchaser or future warranty claims will not be honored.

www.ironcraftusa.com/warranty/register-warranty/



MAKE CLAIM

This form is for dealer use only. Do not use for warranty labor or parts reimbursement.

www.ironcraftusa.com/warranty/claim-warranty/



REIMBURSEMENT

This form is for dealer use only. Apply for warranty labor or parts reimbursement here.

<https://www.ironcraftusa.com/warranty/reimbursement-form/>



SAFETY ACKNOWLEDGEMENT FORM

ATTN ALL OPERATORS: Print your name, sign and date in the boxes below to acknowledge that you have read and fully understand the safety instructions presented in this manual, and have been trained on how to safely operate this attachment.

OPERATOR NAME	SIGNATURE	DATE

OPERATOR NAME	SIGNATURE	DATE

MAINTENANCE LOG

Use this log sheet to document all routine maintenance and repair services performed on this machine.

DESCRIPTION OF MAINTENANCE	SERVICED BY	DATE

DESCRIPTION OF MAINTENANCE	SERVICED BY	DATE



7 ROCKY MT RD
Athens, Tennessee 37303



(P) 423-405-5150

(F) 423-405-5904

WWW.IRONCRAFTUSA.COM



Revised September 22, 2023
©2023 IronCraft Attachments. All rights reserved.