

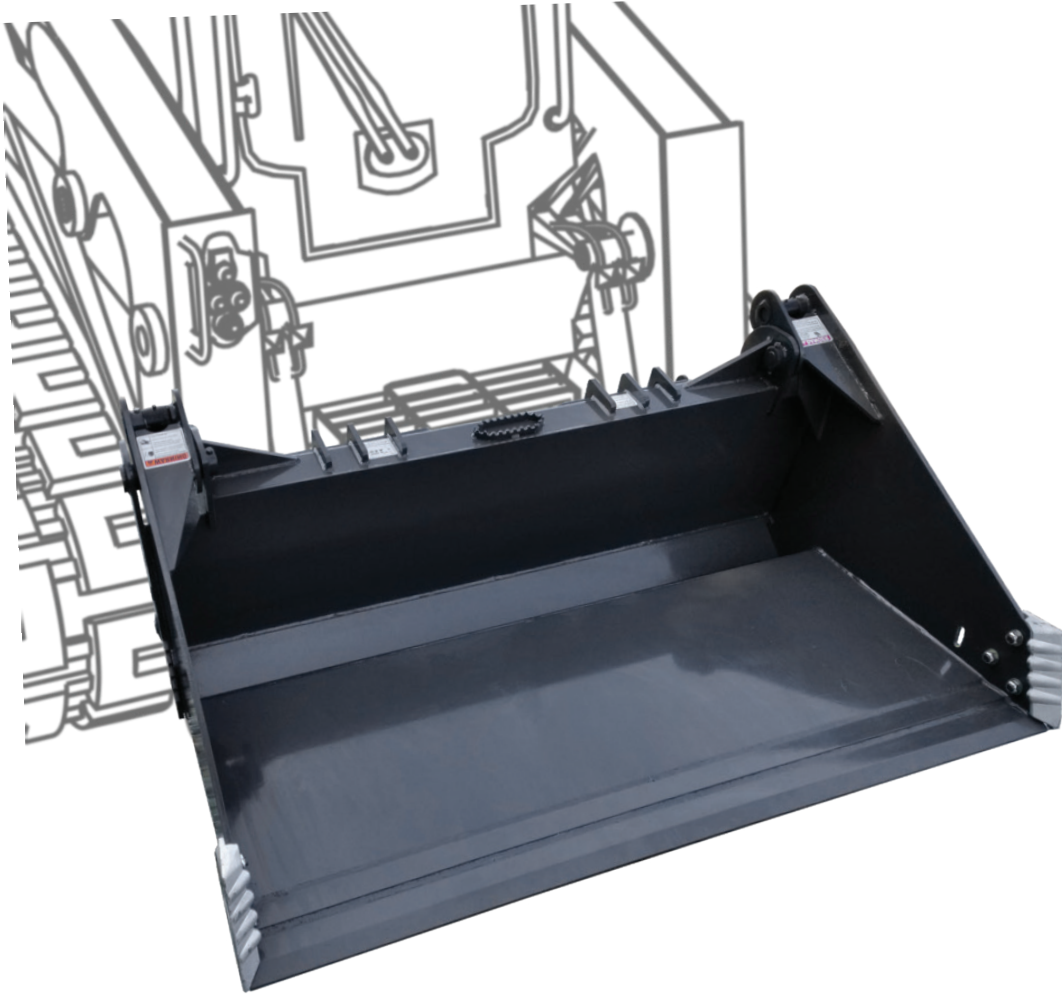


**CID**

**ATTACHMENTS**

# ALL BUCKETS

**OWNER'S MANUAL**



**GENERAL  
BUCKETS**

**SPECIALTY  
BUCKETS**

SEP  
2024

OPERATING INSTRUCTIONS | SAFETY RULES | MAINTENANCE PROCEDURES

## REGISTER YOUR PRODUCT

# CID

### 336-859-2002

MODEL

WEIGHT

PART

HP RANGE

SERIAL

HYDRAULIC PRESSURE

HYDRAULIC FLOW

[WWW.CIDATTACHMENTS.COM](http://WWW.CIDATTACHMENTS.COM)

Please see the inside of the back cover for instructions of where to find your model and serial number.

## **WARNING**

To prevent personal injury or even death, be sure you read and understand all the instructions in this manual and other related OEM equipment manuals! This attachment, if not used and maintained properly, can be dangerous to users unfamiliar with its operation. Do not allow operating, maintaining, adjusting, or cleaning of this attachment until the user has read this manual and has developed a thorough understanding of the safety precautions and functions of the unit. This attachment is designed for the purpose specified. DO NOT modify or use this attachment for any application other than that for which it was designed. Attachments maintained or operated improperly or by untrained personnel can be dangerous, exposing the user and/or bystanders to possible serious injury or death.

**STORE THIS MANUAL IN THE  
DOCUMENT CANISTER ATTACHED  
TO THIS MACHINE.**



Purchase Date:

Dealer Name:

Address:

Phone Number:

## WELCOME

**T**hank you for choosing CID. This attachment has been designed and manufactured to meet the needs of discerning users. We are committed to providing you with a heavy duty product that will provide years of satisfaction and safe operation.

This manual will provide instructions on how to safely operate and maintain this attachment. All users must read and understand this manual before operating this machine. Upon reading this manual, all users should sign the “Safety Acknowledgment Form” at the end of this manual.

Please record your model and dealer information on the inside front cover. You will be asked to provide this information when ordering parts or requesting service. If you need more information on this product, contact your local dealer or visit [www.cidattachments.com](http://www.cidattachments.com).

*Sincerely,  
The CID Team*



# TABLE OF CONTENTS

<b>INTRODUCTION</b> .....	3
<b>WARRANTY DISCLAIMERS</b> .....	5
<b>SECTION 2 BUCKET MODELS</b>	
2.1 General Buckets.....	6-7
2.2 Specialty Buckets.....	8-11
2.3 Available Options.....	12
<b>SECTION 3 SAFETY INFORMATION</b>	
3.1 Safety Terms.....	13
3.2 Safety Symbols.....	14-15
3.3 Safety Decals.....	16-17
3.4 Skid Steer Tractor Requirements.....	18
3.5 Personal Protective Equipment Requirements.....	18
<b>3.6 General Safety Instructions</b> .....	<b>19</b>
<b>3.7 Federal Rules &amp; Regulations</b> .....	<b>20</b>
<b>SECTION 4 OPERATING PROCEDURES</b>	
4.0 Unpacking Your Bucket.....	21
4.1 Pre-Operating Checklist.....	21
4.2 How to Connect Bucket Attachment.....	22-23
4.3 How to Disconnect Bucket.....	24
4.4 Hydraulic System.....	24
4.5 Digging Preparation.....	25
4.6 Prepping For First Time Use.....	26
4.7 Learning Your Attachment.....	26-27
4.8 Before Using Your Attachment.....	27
4.9 Operating Guidelines.....	28
<b>SECTION 5 MAINTENANCE PROCEDURES</b>	
5.0 Maintenance Overview.....	29
5.1 Maintenance Schedule.....	30
5.2 Cutting Edge Removal & Replacement.....	31
5.3 Side Cutting Teeth Removal & Replacement (Optional).....	32
5.4 Tooth Bar Installation (Optional).....	32
5.5 Maintenance Log Instructions.....	33
5.6 Storage Tips.....	33
5.7 Torque Specification Table & Instructions.....	34
5.8 Equipment Requirements.....	34
<b>SECTION 6 TROUBLESHOOTING</b>	
6.0 Troubleshooting Chart.....	35
<b>SECTION 7 PARTS INFORMATION</b>	
7.0 Parts Information Form.....	36
7.1 4-N-1 Bucket Diagram.....	37
7.2 High Dump Bucket Diagram.....	38
7.3 Tooth Bar & Side Cutter Diagram.....	39

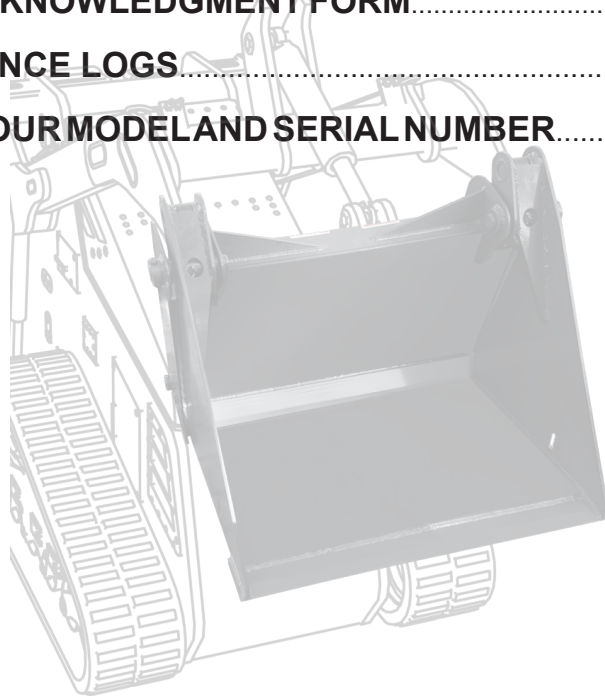
## SECTION 8 WARRANTY INFORMATION

8.0	Warranty Statement.....	40
8.1	Warranty Return Authorization Policy.....	41
8.2	Warranty Procedure.....	42

SECTION 9	SAFETY ACKNOWLEDGMENT FORM.....	43
-----------	---------------------------------	----

SECTION 10	MAINTENANCE LOGS.....	44-46
------------	-----------------------	-------

APPENDIX A	FINDING YOUR MODEL AND SERIAL NUMBER.....	47
------------	---	----



### IMPORTANT WARRANTY DISCLAIMERS

**ATTENTION:** If your attachment has control valves, cylinders, gearboxes, or motors and they are opened or disassembled, the **WARRANTY for that item WILL IMMEDIATELY BE VOIDED!**

**GEAR OIL STATEMENT:** If applicable in your attachment, check gear oil before each use: We recommend using 85-140 grade gear oil, for use with all our gear boxes, and bearing housings which is separate from the hydraulic fluid used to move your attachment or machine.  
(Exception: gear oil used in mulchers is Shell Omala S2 GX 150)

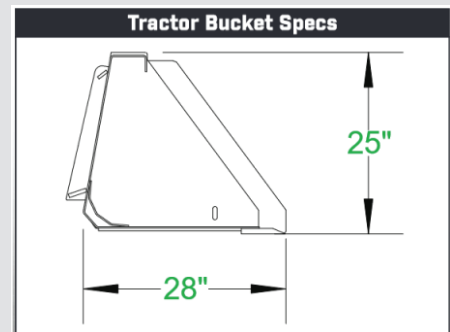
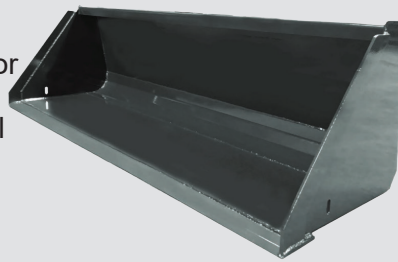
**HYDRAULIC FLUID STATEMENT:** Check your machine's hydraulic level and add hydraulic fluid if necessary before each use. Inspect for leaks, and repair if necessary. **Always use your machine's manufacturer recommended hydraulic fluid in your machine!** Fluid must be clean and debris free. If damage occurs from debris in hydraulic fluid flowing from your machine to our attachment it will VOID the warranty on any cylinders, motors, couplers, manifolds &/or valves (relief, lock, selector, check and flow control) downline from that flow.

# SECTION 2

## BUCKET MODELS

### COMPACT TRACTOR BUCKETS

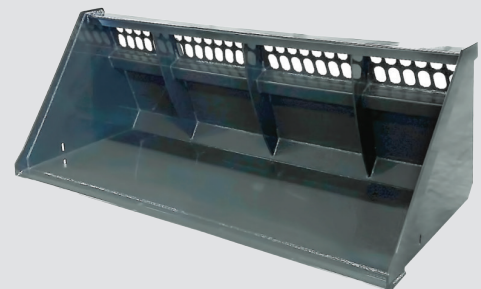
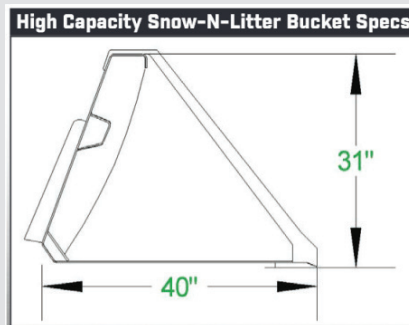
These buckets are designed with higher backs to prevent material from spilling over. These buckets also come with holes in the sides for mounting a tooth bar. These buckets will hook up using the Universal Skid Steer Coupler and many tractor styles of Quick Attach.



- Rated for 45 HP and under.
- Rated for 45-65 HP

### HIGH CAPACITY SNOW-N- LITTER BUCKET

The High Capacity Snow-N-Litter Bucket was built to handle large volumes of material. This bucket has viewing slots in the back. This bucket makes transportation of light equipment more efficient.

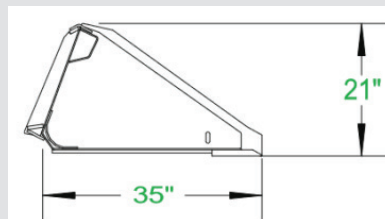
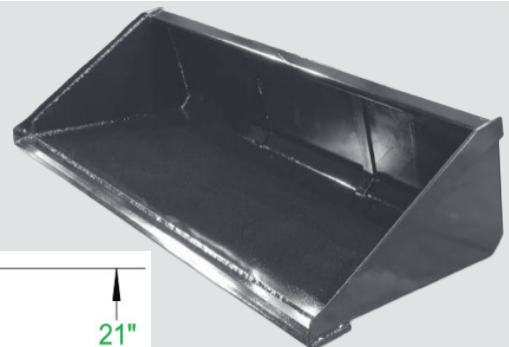


- Optional: bolt on edge.
- Also offered in X-Treme Duty

- Rated for up to 65 HP Track Machines
- Rated for up to 70 HP wheel machines.

### LONG BOTTOM BUCKET

The Heavy Duty Long Bottom Bucket is designed for greater visibility of the cutting edge. It will also hold more material than the Low Profile Bucket.

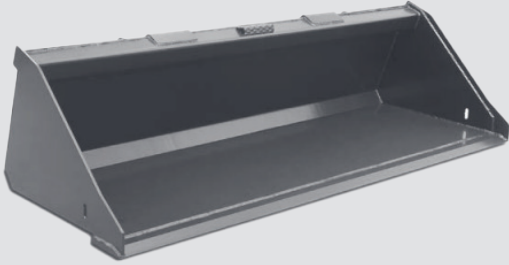


- Optional bolt on edge.
- Optional weld on teeth.
- Optional bolt on side cutting teeth.
- Also offered in X-Treme Duty
- Rated for up to 65 HP Track Machines
- Rated for up to 70 HP Wheel Machines
- X-Treme rated for up to 110 HP

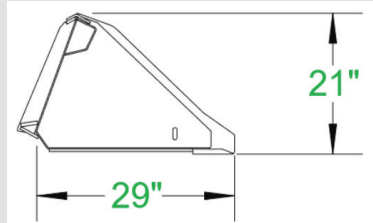
## 2.1 GENERAL BUCKETS

### LOW PROFILE BUCKET

The Heavy Duty Low Profile Bucket is ideal for moving, digging, and grading dirt or gravel.

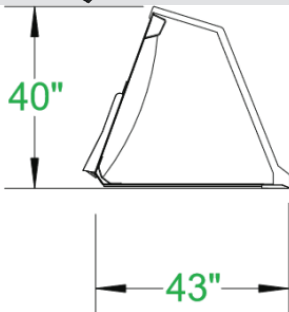
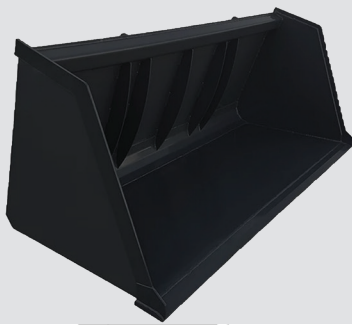


- Optional bolt on edge.
- Optional weld on teeth.
- Rated for up to 65 HP Track Machines
- Rated for up to 70 HP wheel machines.



\*Shown with optional weld on teeth.

### TURKEY LITTER BUCKETS



Turkey Litter Bucket is mostly used for snow removal, loading mulch, and poultry litter removal. It is basically an oversized version of our snow and litter bucket.

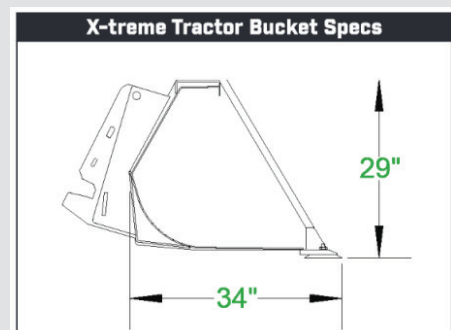
- Designed for large volume, low weight material.
- Optional: Bolt on edge
- X-Treme (XT) Duty Package
- XT: 102", 108", 120" are standard
- Rated for 65 HP Track Machines
- Rated for up to 70 HP Wheel Machines
- X-Treme Rated for up to 110 HP Machines

### X-TREME TRACTOR BUCKETS 65 HP AND UP

The X-Treme Tractor Bucket was designed for Tractors with HP of 65+. With a deep floor & a tall back, this bucket has an oversized capacity. Rolled back makes for easy clean out.

- Optional bolt on edge.
- Severe Package Offered
- Rated for 65+ HP

\*Green color is not a standard offering.



## 2.2 SPECIALTY BUCKETS

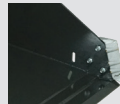
### 4-N-1 BUCKETS- STANDARD & HEAVY DUTY

These buckets are versatile attachments that are ideal for grappling, dozing, backfilling, loading, digging and fine grading.

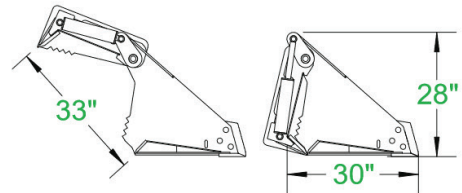
These buckets are built with top quality steel, oversized pins and bushings, with grease fittings at every pivot point. Every unit exceeds the lifting capacity of the skid steer machine it is used on.



- Grease fittings at every pivot point
- Optional weld on teeth
- Optional bolt on edge (HD)
- Optional side cutter (HD)
- Standard Duty rated for 40-50 HP
- Heavy Duty rated for 50-65 HP



Standard Duty / Heavy Duty 4-N-1 Bucket Specs



### 4-N-1 BUCKETS- X-TREME & SEVERE

The X-Treme & Severe 4-N-1 Buckets are designed to handle heavier material and more rigorous usage. Both the X-Treme & Severe 4-N-1 are built with top quality steel, oversized pins and bushings, with grease fitting at every pivot point.

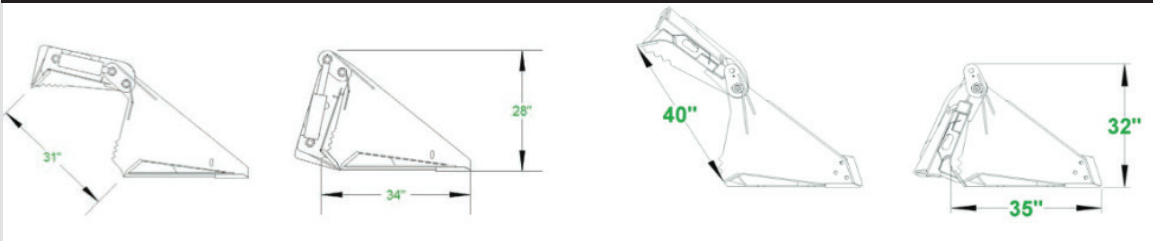


- Optional weld on teeth
- Optional bolt on edge
- Side Cutter standard on both styles
- X-Treme Duty rated for 65+ HP
- Severe Duty rated for 65+ HP



X-Treme 4-N-1 Bucket Specs

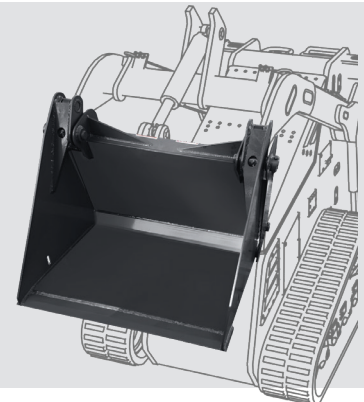
Severe 4-N-1 Bucket Specs



### 4-N-1 BUCKETS- MINI

This Mini 4-N-1 Bucket is very versatile and is ideal for grappling, dozing, backfilling, loading, digging, and fine grading. They are built with top quality Steel, oversized pins and bushings, with grease fittings at every pivot point. Every unit exceeds the lifting capacity of the mini machine it is attached to.

- Optional Weld-On Teeth



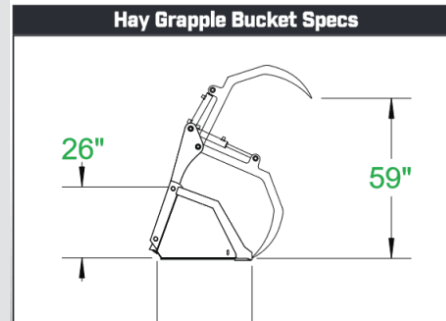


## 2.2 SPECIALTY BUCKETS

### HAY GRAPPLE BUCKET

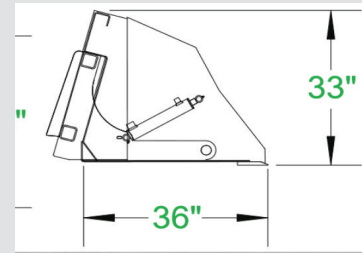
The Hay Grapple Bucket is a large capacity bucket with a grapple and is used for gathering broken bales of hay, straw, silage, and other light material.

- Optional: bolt on edge
- Rated for 65+ HP



### HIGH DUMP BUCKET

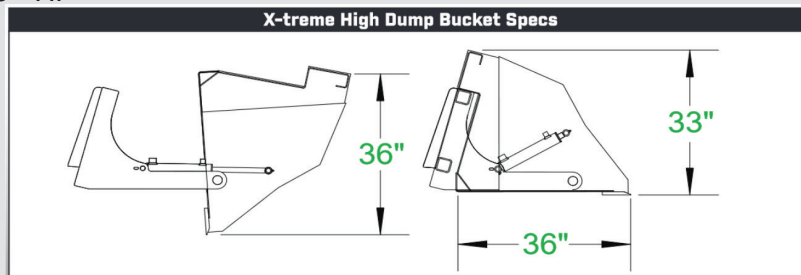
- Higher back to prevent spillage.
- Universal Skid Steer & many tractor styles Quick Attach
- Cutting Edge
- Rated for 65+ HP



### X-TREME HIGH DUMP BUCKET

The X-Treme High Dump Bucket is an essential tool in the poultry business. With the extra 3 feet of dumping height, you can easily load dump trucks to capacity. The High Dump Bucket has extra tall sides to make your clean up jobs go faster. The cylinders are protected on the sides so you don't lose material space inside the bucket. This feature also makes clean out much easier.

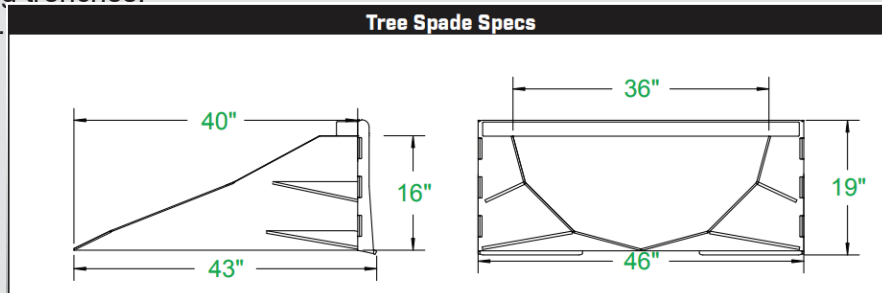
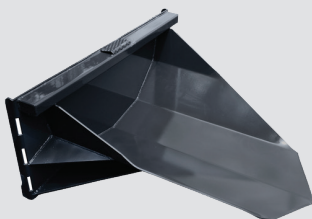
- Rated for 65+ HP



### TREE SPADE

The Tree Spade is an essential tool in landscaping and lawn care or in the nursery industry that can easily dig out stumps, transplant trees or dig trenches.

- Rated for 65 HP or below.



## 2.2 SPECIALTY BUCKETS

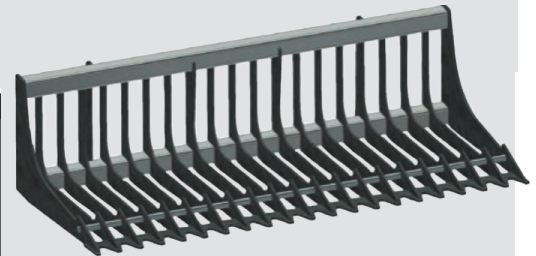
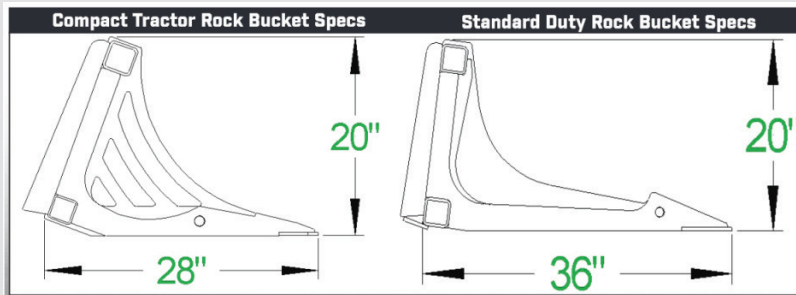
### COMPACT TRACTOR ROCK BUCKET

Compact Tractor & Standard Duty Rock Buckets offer a similar design to our X-Treme version, but in a stepped down size for smaller machines. Easily sift through loose soil to remove unwanted rock & debris.

- **Compact Tractor Specifications**
- 5/16" tine thickness, 3" spacing
- Rated for machines **under 35 HP**.
- **Standard Duty Specifications**
- 3/8" tine thickness, 3" spacing.
- Rated for machines 35-45 HP
- Available in Mini Size also.



COMPACT TRACTOR

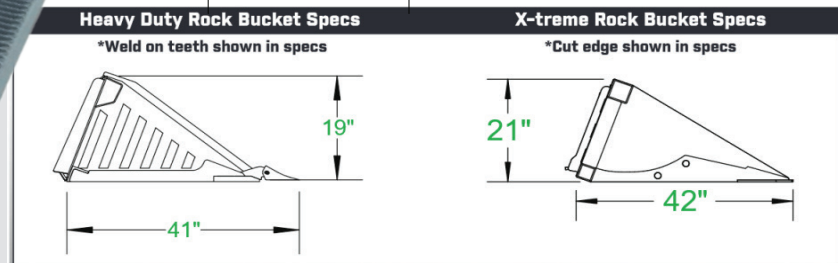
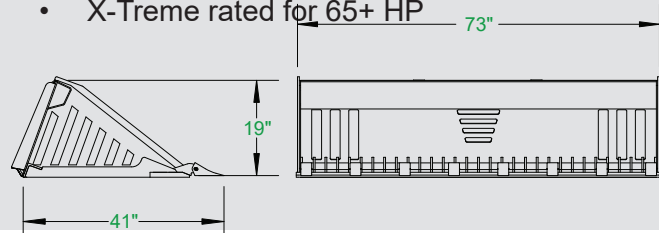


STANDARD

### HEAVY DUTY & X-TREME ROCK BUCKETS

Bigger is better with Heavy Duty & X-Treme rock buckets. The Heavy Duty version has a welded cutting edge to provide strength and rigidity. Optional teeth are available on the welded edge. The X-Treme version has fully welded tines in place of the edge with dual rods to support the rock dam.

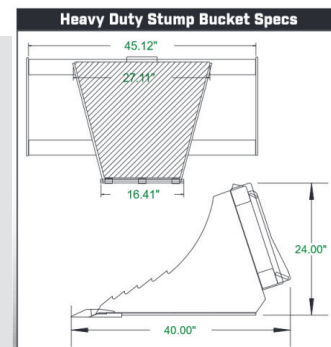
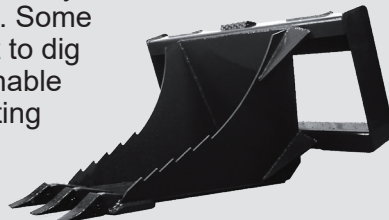
- HD: Optional weld on teeth
- Heavy Duty rated for 45-65 HP
- X-Treme rated for 65+ HP



### HEAVY DUTY STUMP BUCKET

The Heavy Duty Stump Bucket is an excellent addition to your skid steer attachments. Easily dig around the stump, and the pop it out. Some contractors have used the stump bucket to dig house footings. These stump buckets enable you to be more versatile in your contracting needs.

- Stump removal & digging footings.
- Rated for 65 HP or below.

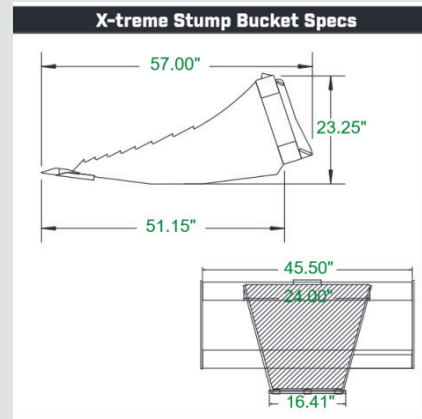


## 2.2 SPECIALTY BUCKETS

### X-TREME STUMP BUCKET

The X-Treme Stump Bucket is made from top quality steel plate and features a cutting edge with replaceable teeth. It has a curved bottom, giving you more leverage when prying up rocks and stumps or digging in harder ground. The X-Treme Stump Bucket is a full 12" longer than the Heavy Duty Stump Bucket.

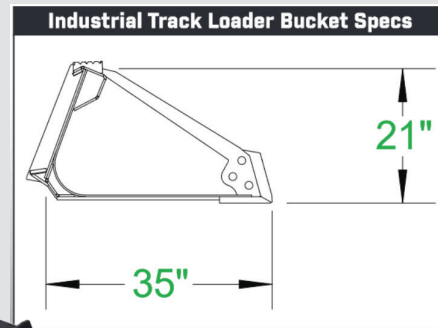
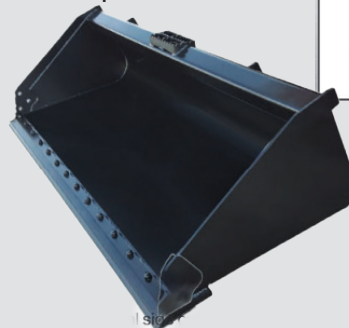
- .Rated for 65+ HP.
- 12" longer bucket.



### INDUSTRIAL TRACK LOADER BUCKET

The Industrial Track Loader Bucket is a comparable alternative to your track loader OEM bucket with upgrades. The cutting edge gives more strength to the bucket while giving even more cutting edge. A rolled back allows for exceptional clean out. Reinforced quick attach and two piece back for extra strength. Low profile design for better visibility.

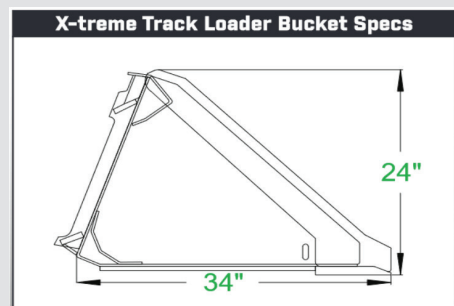
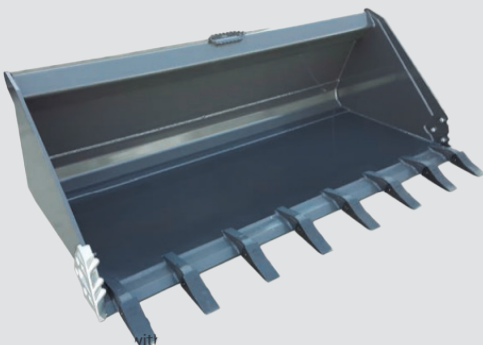
- Standard Industrial Strength
- Optional: Teeth
- Optional: Bolt on cutting edge
- Optional: Side cutting edge.
- Rated for 65+ HP



### X-TREME TRACK LOADER BUCKETS 65 HP AND OVER

X-Treme Duty package is designed for the most demanding track loaders on the market. 1" X 8" cutting edge, 1/2" AR400 heel plate and 1/2" wear bars, reinforced quick attach, 1/4" bucket wrap, rolled back for easy clean out. This is designed for skid steers 65+ HP.

**THIS IS THE STRONGEST BUCKET WE OFFER!**



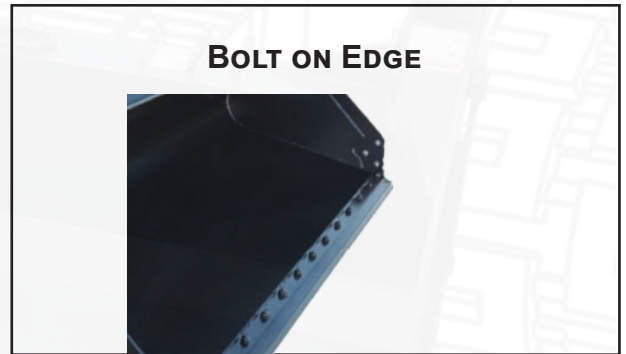
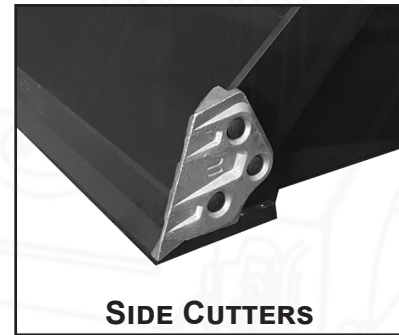
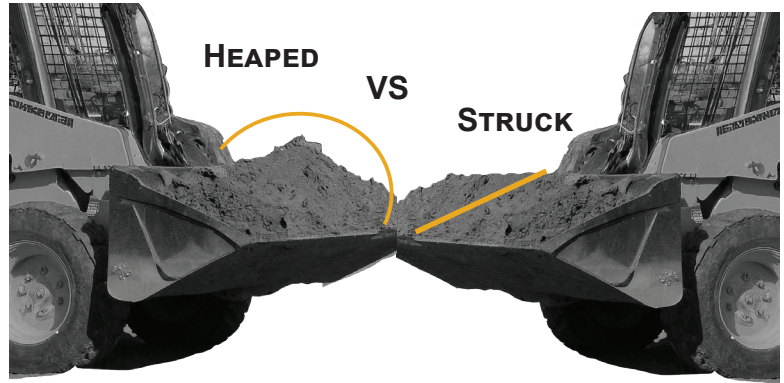
## 2.3 AVAILABLE OPTIONS

### DON'T OVERDO IT! CHECK YOUR BUCKET STRUCK CAPACITY!

To find the volume that your bucket can carry, scan the QR code.



SCAN ME



# SECTION 3

## SAFETY INFORMATION

The following terms may be used interchangeably throughout this manual.

Term	Alternate Terms Used
Bucket	implement, attachment, product
Machine	skid steer loader, skid steer tractor, loader, prime mover, host machine, skid steer
Operator	user, personnel

This **Bucket** is designed and manufactured with safety in mind. However, improper use and operator error can result in death or serious injury. It is important that you read and fully understand the safety instructions and operating procedures presented in this manual before operating this attachment. Accident prevention is a combination of good judgment, common sense, awareness and proper training!



**BEFORE YOU OPERATE THIS BUCKET:**

KNOW how to safely operate your machine.

READ and UNDERSTAND the safety instructions and operating procedures contained in this manual.

ACKNOWLEDGE your understanding of all safety instructions presented in this manual by signing the “Safety Acknowledgment Form” at the end of this manual.

Although every effort has been made to ensure a safe product, every possible circumstance that could pose a potential hazard cannot be anticipated. The warnings presented in this manual and on this product, are therefore not all-inclusive.

In addition to the safety messages presented in this section, you must also read and understand the safety messages presented in the other sections of this manual.

## 3.2 SAFETY SYMBOLS

This manual and the decals on this attachment use safety symbols, hazard labels, pictograms and color coded signal words to alert you to potential hazards that may cause severe injury or death if a safety instruction is ignored.



**SAFETY ALERT SYMBOL** - This symbol is used to alert you to potential personal injury hazards. Obey all safety messages that follow this symbol to avoid possible injury or death.

### HAZARD CLASSIFICATIONS

Hazards are identified by the “Safety Alert Symbol” and followed by the signal word “DANGER”, “WARNING”, or “CAUTION”.

#### **DANGER**

Indicates an imminently hazardous situation which, if not avoided, will result in death or serious injury.  
This signal word is limited to the most extreme situations.

#### **WARNING**

Indicates a potentially hazardous situation which, if not avoided, could result in death or serious injury.

#### **CAUTION**

Indicates a potentially hazardous situation which, if not avoided, may result in minor or moderate injury.

#### **NOTICE**








Indicates a situation which may cause damage to equipment or property.  
Messages are not related to personal injury.

#### **Safety Instructions**

Indicates specific safety-related instructions or procedures.

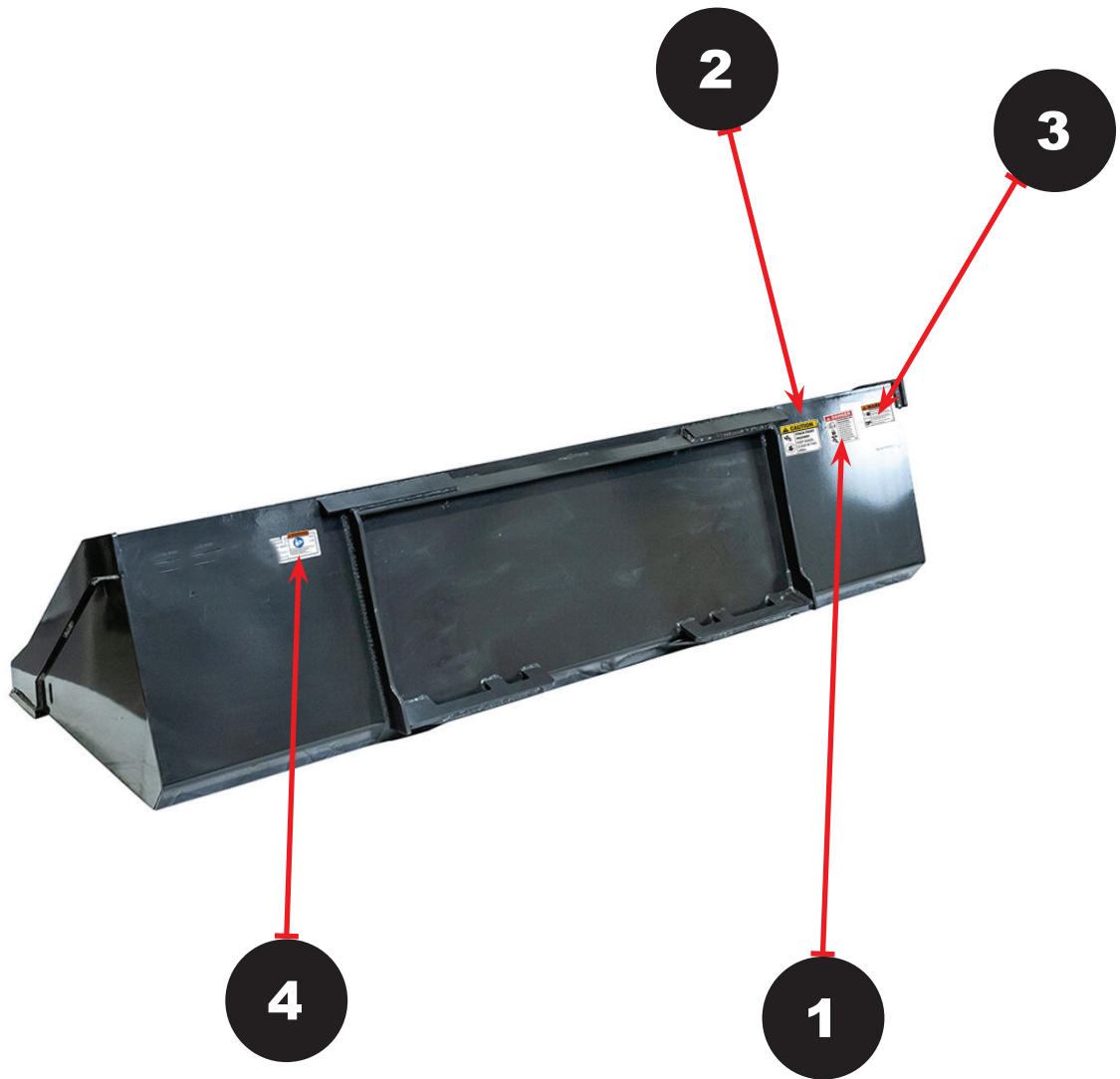
### 3.2 SAFETY SYMBOLS

Pictograms are graphic symbols meant to alert you of a potential hazard. Read and understand the hazard description for each of these symbols.

Pictogram	Description
	<p><b>PINCH HAZARD:</b> Keep clear of machine and bucket attachment to prevent death or serious injury from pinching of moving parts.</p>
	<p><b>FALLING DEBRIS HAZARD:</b> ONLY operate this attachment using a machine that has a shatter proof cab to prevent death or serious injury from objects falling.</p>
	<p><b>OPERATING MANUAL:</b> Operators must read and understand the safety instructions in the operating manual to prevent death or serious injury.</p>
	<p><b>EYE PROTECTION &amp; CARDBOARD:</b> Operators and Maintenance personnel must wear proper eye protection and use cardboard or wood to investigate hydraulic leaks to prevent death or serious injury from being injected with high pressure hydraulic fluid.</p>
	<p><b>HIGH PRESSURE FLUID INJECTION HAZARD:</b> Operators and Maintenance personnel must not place fingers or hands directly over a hydraulic leak to prevent death or serious injury from being injected with high pressure hydraulic fluid.</p>
	<p><b>NO BYSTANDERS:</b> DO NOT operate this attachment near bystanders. Bystanders must stay back at least 30 feet from the machine to prevent death or injury from objects falling.</p>
	<p><b>CRUSH HAZARD:</b> DO NOT place any part of the body under the attachment or machine to prevent death or serious injury from being crushed .</p>

### 3.3 SAFETY DECAL LOCATIONS

Safety warning decals are located on this attachment near immediate areas of potential hazards. Operators must learn the meaning of each decal and know where to find the decal on the attachment.









### 3.3 SAFETY DECAL CHART







The safety decals affixed to this attachment are to keep you safe. DO NOT ignore these decals.

Read and understand each decal's safety message. Follow these Safety Decal Instructions:

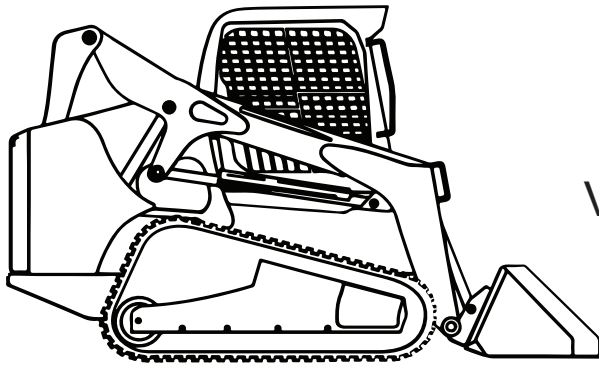
REF	DESCRIPTION	LABEL	QTY
1	DANGER-Falling Object/ Crushing Hazard (CID-05)	 A rectangular decal with a red border and a white background. At the top, it says "DANGER" in bold red letters. Below that, it says "FALLING OBJECT AND CRUSH HAZARD!" in bold black letters. The text continues: "TO PREVENT SERIOUS INJURY OR DEATH, PROPERLY CONNECT AND SECURE THIS ATTACHMENT TO THE PRIME MOVER PER OEM INSTRUCTIONS. DO NOT PLACE BODY PARTS UNDER RAISED LOADER ARMS." There are two icons: one showing a person being crushed by a falling object, and another showing a person being crushed by a falling object. The number "05" is in the bottom right corner.	1
2	CAUTION-Pinch Point Hazard (CID-17)	 A rectangular decal with a yellow border and a white background. At the top, it says "CAUTION" in bold black letters. Below that, it says "PINCH POINT HAZARD!" in bold black letters. The text continues: "KEEP HANDS CLEAR OF THIS AREA." There are two icons: one showing a hand being caught in a pinch point, and another showing a hand being caught in a pinch point. The number "17" is in the bottom right corner.	2
3	WARNING: High Pressure Fluid Hazard (CID-51)	 A rectangular decal with a red border and a white background. At the top, it says "WARNING" in bold black letters. Below that, it says "HIGH-PRESSURE FLUID HAZARD" in bold black letters. The text continues: "To prevent serious injury or death: • Relieve pressure on hydraulic system before servicing or disconnecting hoses. • Wear proper hand and eye protection when searching for leaks. Use wood or cardboard instead of hands. • Keep all components in good repair. • Grease all fittings daily." There are two icons: one showing a hand being caught in a hydraulic hose, and another showing a hand being caught in a hydraulic hose. The number "51" is in the bottom right corner.	1
4	WARNING: Read Manual (CID-10)	 A rectangular decal with a red border and a white background. At the top, it says "WARNING" in bold black letters. Below that, it says "TO PREVENT INJURY OR DEATH, READ AND UNDERSTAND OPERATOR'S MANUAL AND ALL OTHER SAFETY INSTRUCTIONS BEFORE OPERATING OR SERVICING THIS MACHINE." There is one icon showing a person reading a manual. The number "10" is in the bottom right corner.	1

*\*WHEN ORDERING, CHOOSE THE PROPER DECAL FOR YOUR MODEL*

### CONTACT YOUR LOCAL DEALER TO ORDER REPLACEMENT DECALS

-  Decals must be kept clean and legible at all times.
-  Operators must inspect the attachment for safety decals.
-  Replace missing, worn or damaged decals immediately.
-  When using a hot pressure washer to clean this attachment make sure water jet is not too close to the decal as this may cause the decal to peel.
-  When replacing parts, be sure safety decals are in place prior to using the attachment.
-  Make sure metal surface is dry and free of dirt and grease before affixing decals to this attachment.

### 3.4 SKID STEER LOADER REQUIREMENTS



Tracked

VS.



Wheeled

A Tracked Skid Steer or Compact Track Loader (CTL) will provide superior stability in this application.

#### **! CAUTION**

Make sure your machine is in good operating condition. Follow the operating instructions found in the operator's manual. Failure to do so could result in minor or serious injury.

**Buckets should only be used on machines that meet the machine HP and weight requirements listed.**



### 3.5 PERSONAL PROTECTIVE EQUIPMENT (PPE)

All operators should wear hearing protection, safety glasses, hand protection and dust mask while operating this attachment.



### 3.6 GENERAL SAFETY INSTRUCTIONS



**MAKE SURE YOU FOLLOW THE GENERAL SAFETY INSTRUCTIONS THAT RELATE TO THE OVERALL OPERATION AND MAINTENANCE OF THIS ATTACHMENT. IT IS IMPORTANT THAT YOU READ AND UNDERSTAND EACH OF THESE MESSAGES TO PREVENT SERIOUS INJURY OR DEATH.**

- ! NEVER** use drugs or alcoholic beverages while operating or servicing this attachment.
- ! ALWAYS** operate this attachment during daylight or well-lit areas.
- ! We recommend** using a high strength clear protective door panel when using with this attachment.
- ! To prevent** the machine and attachment from rolling forward, stop the engine and set the parking brake when exiting the machine.
- ! Inspect** attachment for loose or missing hardware prior to using this machine.
- ! ALWAYS** watch for overhead power lines.
- ! DO NOT** place any part of your body under this bucket.
- ! NEVER** operate this attachment when bystanders are within 30 feet of your work area. Falling debris could cause serious injury or death.
- ! NEVER** position your body or limbs under an unsupported attachment.
- ! DO NOT** allow this attachment to contact buildings, utilities, large rocks or tree stumps or you may lose control of the machine.
- ! DO NOT** allow children to play on or around this attachment at any time. Store this attachment in an area not frequented by children.
- ! ALWAYS** wear the proper personal protection equipment while operating or servicing this attachment. **NEVER** operate or service this attachment with bare feet, sandals, or other light footwear.
- ! ALWAYS** wear work gloves when handling this attachment to protect your hands.
- ! ALWAYS** use eye protection while operating or servicing this attachment.
- ! DO NOT** operate this attachment during lightning or severe weather conditions.
- ! DO NOT** allow riders on the machine or on this attachment.
- ! ALWAYS** call 811, the “Digger’s Hotline” before digging to identify underground utilities to avoid an accident that could result in Death or Serious Injury to the operator.
- ! DO NOT** speed! Speed Kills! Keep your driving speed between 2 and 5 mph.

## 3.7 FEDERAL LAWS & REGULATIONS

### IMPORTANT FEDERAL LAWS AND REGULATIONS CONCERNING EMPLOYERS, EMPLOYEES, AND OPERATORS

This section is intended to explain in broad terms the concept and effect of the following federal laws and regulations. It is not intended as a legal interpretation of the laws and should not be considered as such.

#### U.S. PUBLIC LAW 91-596 (The Williams-Steiger Occupational Safety and Health Act of 1970) OSHA

##### This Act Seeks:

“ ... to assure so far as possible every working man and woman in the nation safe and healthful working conditions and to preserve our human resources...”

##### Sec. S(a) Each Employer –

##### DUTIES

( 1) shall furnish to each of its employees employment and a place of employment which are free from recognized hazards that are causing or are likely to cause death or serious physical harm to its employees.

( 2) shall comply with occupational safety and health standards promulgated under this Act.

(b) Each employee shall comply with occupational safety and health standards and all rules, regulations, and orders issued pursuant to this Act which are applicable to his or her own actions and conduct.

##### OSHA Regulations

Current OSHA regulations state in part: “At the time of initial assignment and at least annually thereafter, the employer shall instruct every employee in the safe operation and servicing of all equipment with which the employee is, or will be involved.” These will include (but are not limited to) instructions to:

Keep all guards in place when the machine is in operation;

Permit no riders on equipment;

Stop engine, disconnect the power source, and wait for all machine movement to stop before servicing, adjusting, cleaning, or unclogging the equipment, except where the machine must be running to be properly serviced or maintained, in which case the employer shall instruct employees as to all steps and procedures which are necessary to safely service or maintain equipment.

Make sure no one is within 300 feet of machinery before starting the engine, engaging power, or operating the machine.

##### EMPLOYEE MACHINE OPERATING INSTRUCTIONS:

1. Securely fasten your seat belt if the machine has a ROPS.
2. Where possible, avoid operating the machine near ditches, embankments, and holes.
3. Reduce speed when turning, crossing slopes, and on rough, slick, or muddy surfaces.
4. Stay off slopes too steep for safe operation.
5. Watch where you are going, especially at row ends, on roads, and around trees.
6. Do not permit others to ride.
7. Operate the machine smoothly - no jerky turns, starts, or stops.
8. Hitch only to the drawbar and hitch points recommended by machine manufacturers.
9. When machine is stopped, set brakes securely and use park lock if available.

##### Child Labor Under 16 Years Old

Some regulations specify that no one under the age of 16 may operate power machinery. It is your responsibility to know what these regulations are in your own area or situation. (Refer to U.S. Dept. of Labor, Employment Standard Administration, Wage & Home Division, Child Labor Bulletin # 102).

# SECTION 4

## OPERATING PROCEDURES

Your attachment arrives from the factory strapped to a wood pallet and requires no final assembly. Use a steel band cutting tool to remove the steel straps.

### CAUTION

Shipping straps are under great tension, and could lash out uncontrollably when cut causing injuries to your body or bystanders. Keep bystanders away and wear safety glasses and gloves while removing the steel straps.

#### 4.1 PRE-OPERATING CHECKLIST

Pre-Operating Checklist	
<input type="checkbox"/>	Bucket is securely attached to the machine and pins are locked.
<input type="checkbox"/>	Hydraulic hoses are connected and locked to the host machine's hydraulic couplers with no signs of hydraulic fluid leaks present.
<input type="checkbox"/>	Bucket is in working condition and securely attached to the machine and all bolts and nuts are tight.
<input type="checkbox"/>	Safety labels are present and legible.
<input type="checkbox"/>	No material, ropes, wire, etc. is obstructing the machine or bucket..
<input type="checkbox"/>	The area of operation is clear of bystanders and any obstacles that could damage the equipment or injury to the operator.
<input type="checkbox"/>	The operator is of good health and not under the influence of any mind altering substances or alcohol.
<input type="checkbox"/>	Check the machine's hydraulic fluid level and add manufacturer recommended fluid if necessary. <i>Please refer to our "Hydraulic Fluid and Oil Statement" on Page 5 for gear oil or hydraulic fluid instructions.</i>

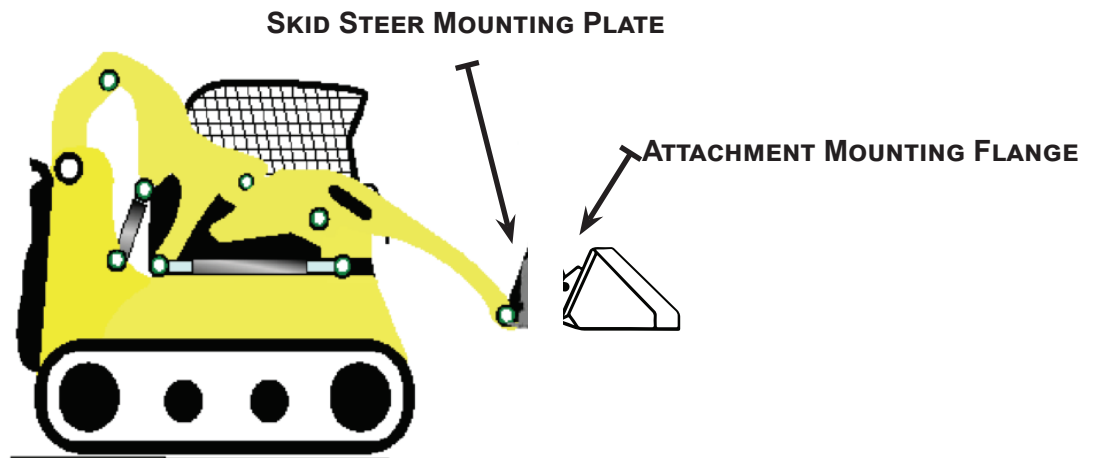
## 4.2 HOW TO CONNECT BUCKET ATTACHMENT

### GENERAL ATTACHMENT METHOD

Refer to your machine's manual for specific instructions on how to connect and disconnect your attachment. See figure 4.2c.

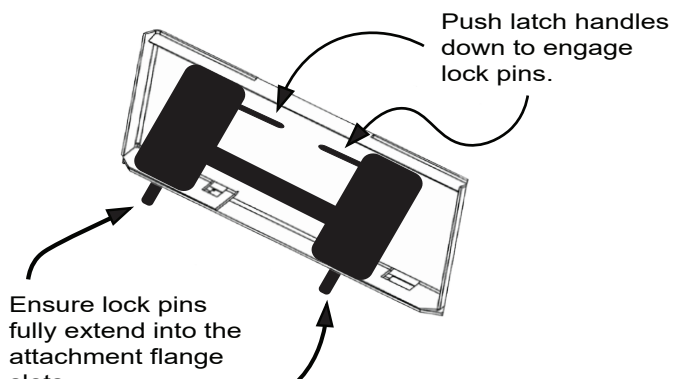
This attachment method refers specifically to skid steers. For all other attachment instructions, refer to the Original Equipment Manufacturer (OEM) for instructions.

1. Make sure the hydraulic lines are clear from the front side of the bucket's attachment plate and that the locking pins on the skid steer quick attach mechanism are in the unlocked position.
2. Drive the skid steer to the attachment plate and tilt the skid steer coupler forward and hook the top edge of the skid steer quick attach mechanism under the lip of the bucket's attachment plate. See figure 4.2a below.
3. Slowly raise and tilt back the skid steer mounting plate, moving upward until the bucket's attachment plate is flat against the skid steer quick attach mechanism. See figure 4.2a below.



**FIGURE 4.2A - SKID STEER MOUNTING PLATE TO ATTACHMENT MOUNTING FLANGE**

4. Activate your skid steer's lever lock switch to engage and lock the pins into the flange slots of the bucket's attachment plate. If your skid steer does not have this switch, push the latch handles down until you can see the lock pins extend into the attachment flange as shown in Figure 4.2b below.



**FIGURE 4.2B QUICK ATTACH COUPLER LOCKED TO ATTACHMENT PLATE**



**FIGURE 4.2C TRACTOR PIN ON HOOKUP**

## 4.2 HOW TO CONNECT BUCKET ATTACHMENT CONT.

### **! WARNING**

To avoid serious injury or death, ensure coupler pins fully extend through the slots on the attachment bracket and that levers are down in the locked position to prevent bucket from detaching from machine.

### **NOTICE**

To keep contaminants from entering the hydraulic system, use a clean cloth to wipe away dirt and grease from the hydraulic couplers and cover with plastic or metal caps when not in use.

5. Connect the attachment hydraulic hoses to the auxiliary supply couplers located on your skid steer loader lift arm.

### **NOTICE**

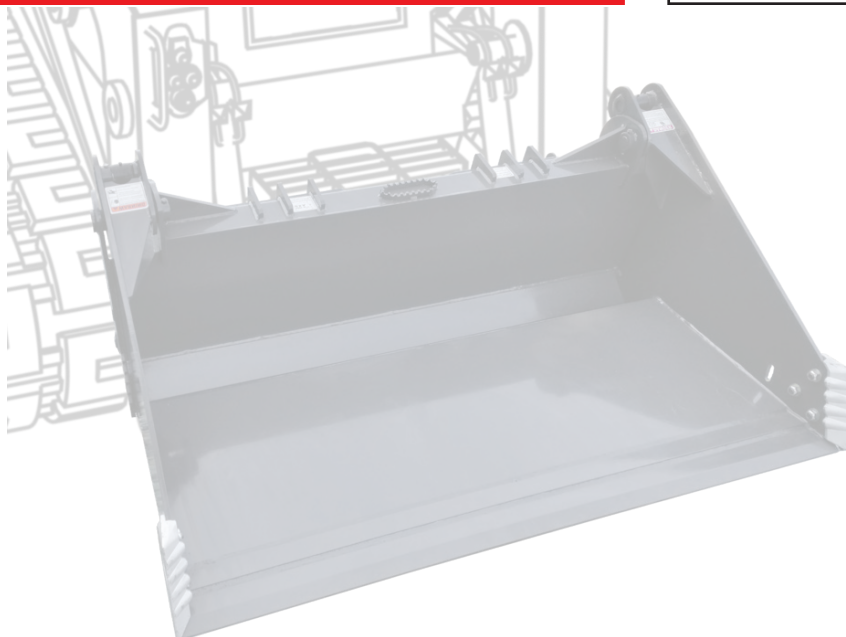
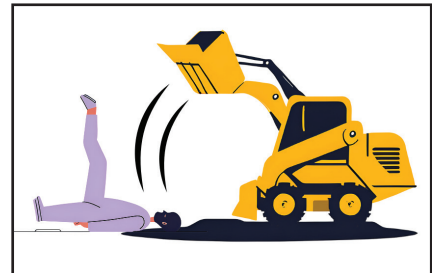
Check that hydraulic hoses are locked into the machine's couplers before moving the bucket.

### **! CAUTION**

ALWAYS visually inspect and verify that the coupler lock pins are fully engaged through the latch slots on the attachment plate.

### **! DANGER**

NEVER enter the area underneath the coupler or any part of the attachment when it is in the raised position to avoid an accident that will result in Death or Serious Injury!



## 4.3 HOW TO DISCONNECT BUCKET

1. Turn off auxiliary hydraulic circuit; relieve hydraulic pressure.
2. Park machine on a flat and level surface then lower bucket to the ground.
3. Set parking brake and disengage lock pins using the lock lever switch (if installed).
4. Turn off machine engine.
5. Disconnect hydraulic hoses.
6. Pull latch handles to disengage lock pins.
7. Re-enter cab and start machine engine.
8. Tilt mounting coupler forward until Quick Attach Coupler is free from mounting bracket.
9. Drive machine backward to clear bucket.

---

## 4.4 HYDRAULIC SYSTEM



*Please refer to our “Hydraulic Fluid and Oil Statement” on Page 5  
for gear or hydraulic fluid instructions.*

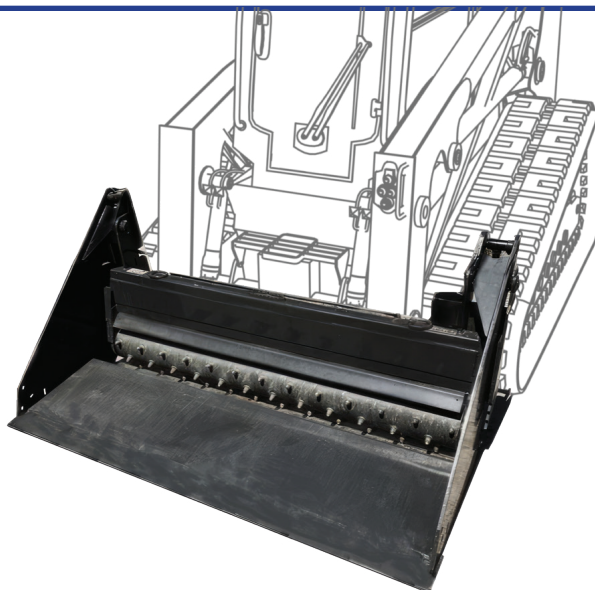


### HYDRAULIC FLOW

When operating the bucket, set the machine engine RPM to a speed that will produce the required flow. Your machine dealer can measure the flow available on your machine and recommend a throttle setting that is compatible with this attachment.

### NOTICE

ALWAYS release the hydraulic system pressure from the hydraulic circuits prior to removing the attachment or any hydraulic service work.





### DANGER

ALWAYS contact 811, the “Digger’s Hotline” to identify underground utilities to avoid an accident that could result in Death or Serious Injury!



ALWAYS be aware of your surroundings and pay attention to obstacles and terrain around you.

You must notify utility companies of your intent to dig or trench by calling 811 or making an online request with your state’s 811 center a few days prior to digging or trenching. Visit: <https://call811.com/811-In-Your-State> to connect to your state’s 811 center.



**Know what's below.  
Call before you dig.**

## 4.6 PREPPING FOR FIRST TIME USE

Verify that hydraulic hoses are securely locked to the machine hydraulic couplers before starting to use this attachment.



*Please refer to our “Hydraulic Fluid and Oil Statement” on Page 5 for gear oil or hydraulic fluid instructions.*



### NOTICE

Before operating the bucket, check the hydraulic fluid in the machine and add fluid if necessary.

1. After starting machine, lift attachment ten (10) inches off the ground surface:
2. Set machine engine RPM to just above idle.
3. Slowly engage the auxiliary hydraulic flow to the attachment cylinder arm until the function operates.
4. Reverse the direction of the hydraulics until the function has been placed in the opposite direction. Repeat this two (2) more times to purge any air from the system.
5. Lower the attachment to the ground, shut off machine engine and exit the operator’s cab.
6. Check the hydraulic fluid level in the machine, add manufacturer recommended fluid if necessary.
7. Inspect the bucket hydraulic hoses and fittings for noticeable leaks. Fix before continuing.

### WARNING

To avoid serious injury by hydraulic fluid injection into your skin, never use your hand or other body parts to locate a hydraulic leak. Detect leaks with a piece of wood or cardboard.

## 4.7 LEARNING YOUR ATTACHMENT

### DANGER

NEVER operate the attachment when bystanders are within thirty (30) feet of your work area.

### CAUTION

USE CAUTION when operating on un-level ground surfaces. A machine roll over could result in Minor or Serious Injury. ALWAYS wear your seat belt when operating this attachment.

## 4.7 LEARNING YOUR ATTACHMENT CONT.

1. Before using this attachment, make sure you are knowledgeable and comfortable with the operation of the auxiliary hydraulic control as outlined in previous sections of this manual and in the machine's operator's manual.
2. When operating this attachment, set the machine throttle at a speed that will produce the required flow. If the machine is equipped with a foot throttle, use it to control engine speed and power being delivered to the attachment. Refer to your machine manual or call your local machine dealer for additional help if necessary.
3. Learn what the attachment looks like in a level position when you are seated in the machine. This will help you when operating the attachment.
4. The correct ground speed while using this attachment depends on the application and condition and can usually be monitored by sound and feel and depends on the material density.
5. Note that if the machine engine is bogging down because of load on the attachment, it will be necessary to decrease the load until the machine's power can overcome the material load on the attachment.

---

## 4.8 BEFORE USING YOUR ATTACHMENT

### **! DANGER**

ALWAYS contact 811, the "Digger's Hotline" to identify underground utilities to avoid an accident that could result in Death or Serious Injury!

### **! WARNING**

EXPOSURE to crystalline silica dust along with other hazardous dusts may cause serious or fatal respiratory disease. It is recommended to use dust suppression, dust collection and if necessary personal protective equipment during the operation of any attachment that may cause a high level of dust.

1. Inspect the area to be worked and make sure it is free of any utilities, rocks, fence posts, or any other objects that you do not want to move.
2. Determine a safe and efficient pattern before the start of the job.



## 4.9 OPERATING GUIDELINES

### DANGER

To prevent death from electrocution, NEVER operate this attachment near electrical wires or cables.

### WARNING

When lifting a load of brush or trees, make sure all ends are not tangled with standing trees that could cause the center of gravity to be compromised, resulting in a rollover that could cause Death or Serious Injury.

1. ALWAYS inspect the work area before starting the job. Locate and mark any utilities (shut off utilities), steel posts, rocks or any other objects that could be damaged or could damage this attachment during operation.
2. NEVER assume the work area is safe and skip the inspection before start of operation.
3. Operate at a safe slow-paced speed that will allow you to watch the area ahead and behind the attachment and machine.
4. Since about half of your work with this attachment may be in reverse, look behind you and/or utilize your mirrors and camera when backing up.
5. VERIFY that your back-up alarm is working properly to warn others when you are in reverse, but NEVER think that the alarm or camera replaces your responsibility to visually check what is behind you.
6. Attachment control is the most important element to getting a good steady work flow. Overloading the attachment will only result in spinning the tracks or tires and will make unwanted ruts.
7. Overloading the attachment will also necessitate raising the implement to off-load some of the resistance occurring by the material.
8. If you lift too heavy a load with your attachment, you may raise the rear of your machine, and further reduce your tractive power available to move the load.
9. Before beginning your forward motion with your attachment, stop the machine and make any final adjustments to the attachment for weight and height.
10. When picking up objects with your attachment, make sure you center your load. Estimate the load center and pick up accordingly, reposition your grab and retry if needed. An unbalanced load could flip your machine.
11. When loading your hydraulic attachment and clamping the arms over the load, roll the attachment back and retighten the clamp arm pressure. The load will settle and require some additional clamping pressure to secure the load.



*Center load on attachment*

12. When using your hydraulic attachment, make sure that you can visually see your load. Beware of pushing or pulling down trees or any type of structure in which you cannot visually see the process.
13. To save service work and down time, always pay attention that tree branches or roots do not poke through past the attachment arms and damage any hydraulic parts or even enter the cab area.
14. Be careful that a branch or root does not “whip” back at the machine. Wear safety glasses to prevent dirt getting in your eyes. The manufacturer highly recommends a closed in cab.
15. Keep your distance from any type of utility, whether underground or in the air.



# SECTION 5

## MAINTENANCE PROCEDURES

The maintenance procedures described in this manual should only be carried out by qualified mechanics who have been trained to repair this attachment.

Some procedures require special tools and skills to complete. **DO NOT** attempt to repair or perform service work on this attachment unless you have the skills and tools to do so. Contact your local dealer for maintenance and repair services.

### **WARNING**

### **PARTS**







Only use genuine Original Equipment Manufacturer (**OEM**) replacement parts. We will not be liable for any damages or injuries caused by the use of after market parts on this attachment.

### **NOTICE**

Improper maintenance or modifications to the design or performance of this attachment will void the warranty. **ONLY** use genuine OEM replacement parts on this attachment.

### **Safety Instructions**

Obey the following safety instructions when servicing or repairing this attachment.

-  **Wear proper Personal Protective Equipment (PPE) while working on this attachment, which may include safety glasses, hard hats, steel toe boots, gloves, etc.**
-  **If servicing is performed while the bucket is attached to the machine, turn engine off, set parking brake and chock wheels to prevent machine from moving.**
-  **Ensure all jack stands, lifts and hoists are in good working condition and have the rated load capacity to support the load.**
-  **Only perform service work in a well-lit area.**
-  **Allow the attachment to cool down before servicing this attachment.**
-  **NEVER work under an unsupported attachment**

## 5.1 MAINTENANCE SCHEDULE.

This Bucket attachment will provide years of dependable service if routine maintenance procedures are performed. The maintenance tasks listed below are based on normal operating conditions. More frequent maintenance may be necessary with intense use or when operating in adverse environmental conditions.

Some of these maintenance tasks may not apply based on your bucket model.

MAINTENANCE TASK	BEFORE EACH USE	WEEKLY	YEARLY
<p>Check host machine's hydraulic fluid level. Add manufacturer recommended fluid as necessary.</p> <p><i>Please refer to our "Hydraulic Fluid and Oil Statement" on Page 5 for gear oil or hydraulic fluid instructions.</i></p>	<b>X</b>		
<p>Check that all fasteners (nuts, bolts, washers, pins, keepers) are in place. Tighten as necessary.</p>	<b>X</b>		
<p>Inspect and replace any worn, torn, or missing safety decals.</p>	<b>X</b>		
<p>Inspect hydraulic hoses and connectors for damage or leakage. Repair or replace hydraulic items as necessary.</p>	<b>X</b>		
<p>Lubricate all pivot joints using #2 lithium grease.</p>	<b>X</b>	<b>X</b>	<b>X</b>
<p>Check the condition of the cutting edge.</p>		<b>X</b>	<b>X</b>
<p>Wash bucket attachment</p>		<b>X</b>	
<p>Check bucket for major scratches &amp; dings. Sand and repaint these areas to prevent rust damage.*Contact the manufacturer for approved OEM paint for your attachment.</p>			<b>X</b>

Document all maintenance and service activities performed on this bucket using the maintenance log sheets included at the end of this manual.

## 5.2 CUTTING EDGE REMOVAL & REPLACEMENT

### **! DANGER**

NEVER enter the area underneath the coupler or any part of the attachment when it is in the raised position to avoid an accident that will result in Death or Serious Injury!

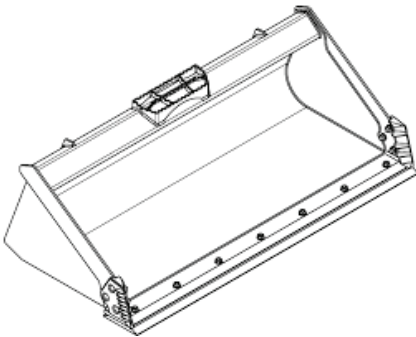
### **! WARNING**

Hazardous dust can be generated if painted surfaces are heated or welded and could result in Death or Serious Injury. Remove paint before welding and always make repairs in a well-ventilated area and wear an approved respirator.

**Bolt-on** cutting edge replacement can be completed safely with proper torque values applied.

**Weld-on** cutting edge replacement is not a task for most machinery operators and should be referred to a welding shop that possesses the proper equipment, knowledge, and experience.

**Replacement cutting edges are available from the manufacturer.**



Attaching the Cutting Edge to your existing bucket is a simple process that requires the use of the appropriate bolts and nuts, then torquing to the correct specifications as listed on page 34.

Contact your dealer for help with specific problems.

### **! CAUTION**

Cutting edges can be very heavy and could cause Minor or Serious Injury if mishandled. ALWAYS wear protective gloves and footwear.

## WELDING REPAIRS

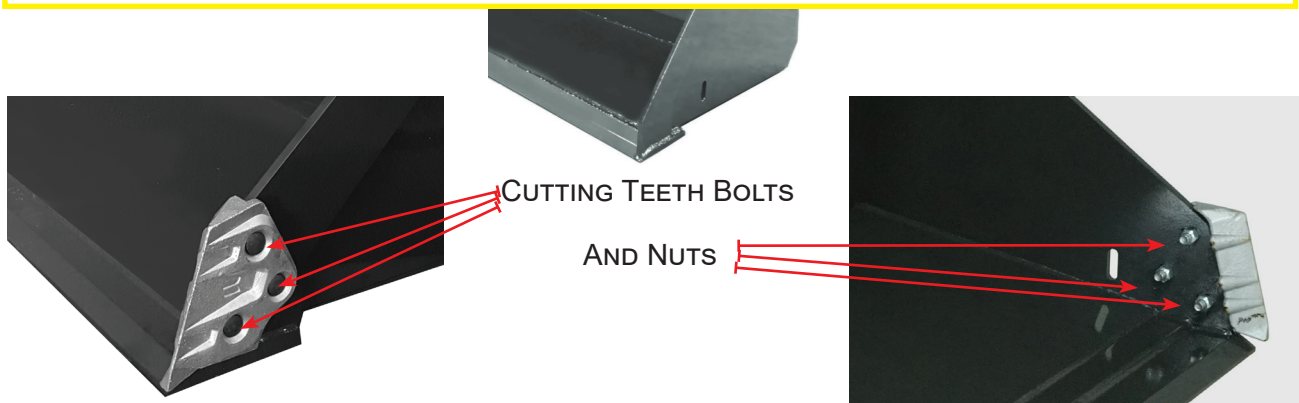
**Welding on attachments must be performed by certified welders who have requested and obtained written approval from an authorized representative of the manufacturer before welding begins.**

All authorized welding repairs must be performed by qualified welders in accordance to the American Welding Society (AWS) standards. Welding procedures performed by unqualified welders may deem this bucket unsafe to operate and **VOID THE WARRANTY!**

### 5.3 SIDE CUTTING TEETH REMOVAL AND REPLACEMENT (OPTIONAL)

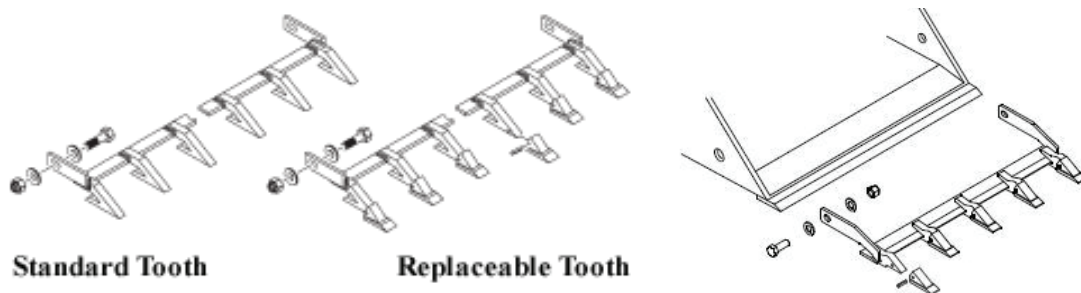
#### **! CAUTION**

Cutting edges can be very heavy and could cause Minor or Serious Injury if mishandled. ALWAYS wear protective gloves and footwear.



Carefully remove the 3- 5/8" Carriage Bolts, flat washer, and nuts per side that hold the cutting teeth in place. Replace the cutting teeth, rebolt and torque to specifications.

### 5.4 TOOTH BAR INSTALLATION (OPTIONAL)



Attaching a tooth bar to your existing bucket is a simple process. The shanks on the tooth bar hook onto your existing cutting edge where the pressure is applied. The bolts hold the tooth bar to the bucket. The teeth are all replaceable so there is no worry about breaking one.

1. Find the hole on each side of your bucket. If one cannot be located, you may drill one.
2. Bolt on the tooth bar and torque to the specifications listed on page 34.

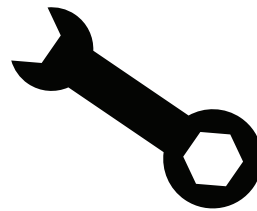




## 5.5 MAINTENANCE LOG INSTRUCTIONS



# MAINTENANCE LOG



Use the log sheets on at the end of this manual to document all routine maintenance and repair services performed on this attachment.

### 10. MAINTENANCE

#### MAINTENANCE LOG

DESCRIPTION OF MAINTENANCE/REPAIR	SERVICED BY:	DATE:
<i>Replace Pitter Blades</i>	<i>Joe Smith</i>	01/24/24
<i>Inspect Hydraulic Plumbing</i>	<i>Joe Smith</i>	02/25/24
<i>Change Oil in Bearing Housing</i>	<i>Joe Smith</i>	04/24/24

## 5.6 STORAGE TIPS

	<p>Ensure bucket is free of debris, dirt and grease.</p>
	<p>Store your bucket in a dry shed or garage.</p>
	<p>When storing your bucket for the season, cover with a weather proof tarp to protect it from the elements.</p>

## 5.7 TORQUE SPECIFICATION TABLE AND INSTRUCTIONS

### BOLT TORQUE INSTRUCTIONS

1. Apply and maintain proper torque on all bolts.
2. Torque values are based on lubricated values. **Do not grease or oil bolts.**
3. Wipe bolts clean and use Loctite 635 or equivalent before tightening bolts. May need curing activator.
4. Use a torque wrench to assure the proper amount of torque is being applied to the bolt.
5. **MUST CURE 72 HOURS BEFORE USE TO PREVENT LOOSENING OF BOLTS.**



	DRY lb.-ft.	LUBRICATED lb.-ft.
1/4"	12	9
5/16"	24	18
3/8"	45	35
1/2"	110	80
3/4"	380	280
7/8"	600	450
1"	910	680
1 1/4"	1820	1360
1 1/2"	3162	2688

## 5.8 TORQUE EQUIPMENT REQUIREMENTS

### TOOLS & EQUIPMENT REQUIREMENTS

To complete the maintenance procedures described in this section, you may need the following tools:

- 1/2 inch drive breaker bar
- 3/4 inch impact socket
- 1/2 inch impact socket
- Tapping Hammer
- 1/2 inch drive torque wrench
- Nylon pry bar set
- Safety stands
- **Loctite 635 or Equivalent-MUST CURE 72 HRS**
- Lifting device (overhead crane hoist, forklift)



#### NOTE:

When removing bolts with Loctite, it will be necessary to apply localized heat of at least 250 degrees Celsius or to 482 degrees Fahrenheit to loosen bolts.

**LOCTITE 635 TECHNICAL SPECIFICATIONS FOR BONDING, CURING, REMOVAL AND INSTALLATION CAN BE FOUND HERE:**

<https://next.henkel-adhesives.com/>

# SECTION 6

## TROUBLESHOOTING

PROBLEM	POSSIBLE CAUSE	SOLUTION
Machine loses power when operating bucket.	RPM's are not high enough. Hydraulic Flow is too slow.	Increase RPMs and reduce ground speed. Look for hydraulic leaks & repair.
Bucket becomes uneven.	Bucket receiving excessive shock loads from contacting solid objects (rocks, steel pipes, etc.) Bucket used on too powerful of a machine.	Clear the area of solid objects, raise bucket height to clear exposed rock surfaces. Use on the correct machine.
Hydraulic fluid level goes down during operation.	Hydraulic motor leak, or leaks in host machine's hydraulic system.	Investigate and repair leaks.
Cylinder does not open or close.	1. Quick disconnects not connected. 2. Hose damaged. 3. Machine auxiliary circuit inoperative	1 Check & Recouple Quick disconnects. 2 Check for smashed or kinked hose & replace if found. 3. Investigate and have repaired.
Cylinder moves very slow	1. Restricted hose. 2. Circuit relief on machine bad. Auxiliary valve spooling on machine not shifting properly Cylinder seals by-passing	1. Check for damaged hose between machine & cylinders. If damaged, replace. 2. Investigate & have repaired. 3. Investigate & have repaired. 4. Have cylinder(s) repacked or replaced.

### DANGER

ONLY service the bucket on stable, even terrain. NEVER park on sloped terrain to avoid being struck & killed or seriously injured by the unexpected rolling or movement of the machine.

# SECTION 7

## PARTS INFORMATION

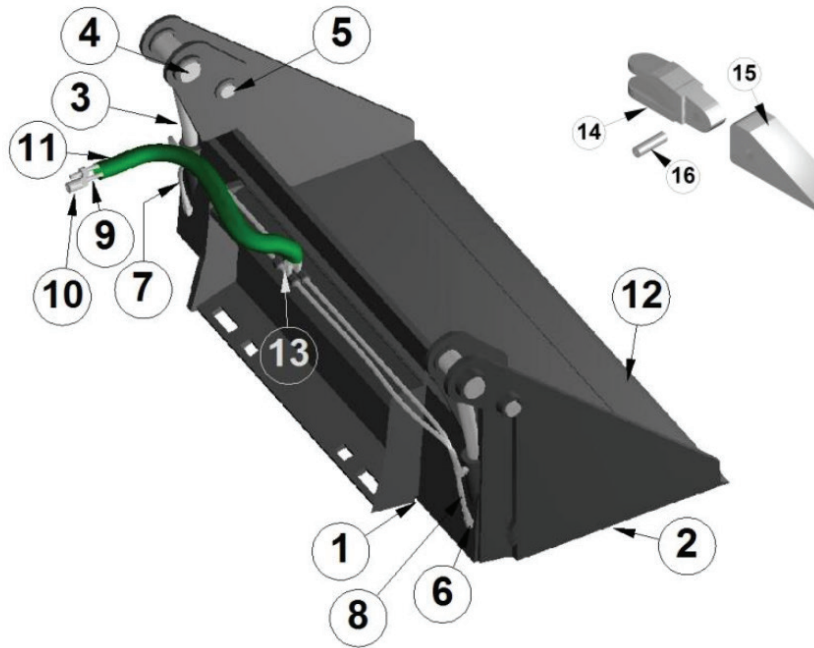
Factory OEM parts specifically designed for your implement are readily available.

For hassle free service and to ensure you receive the correct parts for your implement, please provide your dealer with the following information:

<b>Model Number</b>	
<b>Serial Number</b>	
<b>GPM Requirements</b>	
<b>Date of Owners Manual (Bottom Left Corner of Cover Page)</b>	
<b>Parts Diagram Page Number</b>	
<b>Part Description</b>	
<b>Reference #</b>	
<b>Quantity Desired</b>	
<b>Ship To Information</b>	
<b>Bill To / Payment Information</b>	

## 7.1 4-N-1 BUCKET DIAGRAM

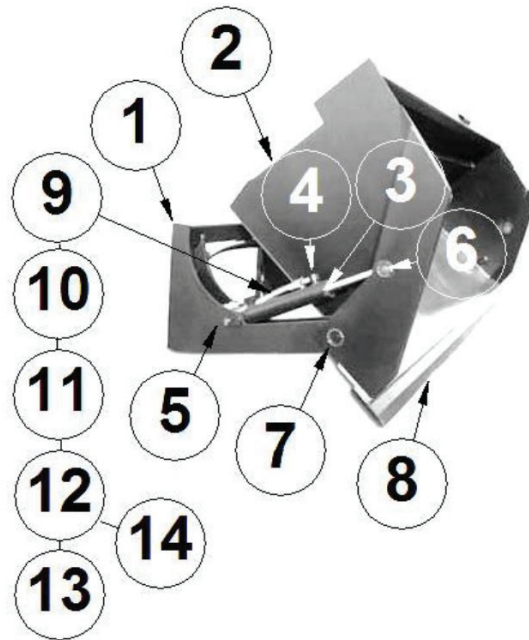
### 4-N-1 BUCKET



Ref. No	Part Description	Qty
1	Frame Weldment	1
2	Clam Weldment	1
3	Cylinder	2
4	Pin, Rod End of Cylinder to Clam	2
5	Pin, Clam Pivot	2
6	Elbow 90°, into Cylinder	4
7	Hose, Cylinder Rod End to Tee	2
8	Hose, Cylinder Base End to Tee	2
9	Hose Set, Tees to Quick Disconnects	1
10	Quick Disconnect Set	1
11	Sleeve, Hose Protection-Specify Size & Length	A/R
12	Cutting Edge, Weld-on	1
13	Hydraulic Coupler	1-2
14	Tooth Shank, Weld-on	A/R
15	Tooth Point	A/R
16	Roll Pin-Secures Tooth Point to Shank	A/R

## 7.2 HIGH DUMP BUCKETS DIAGRAM

HIGH DUMP BUCKET

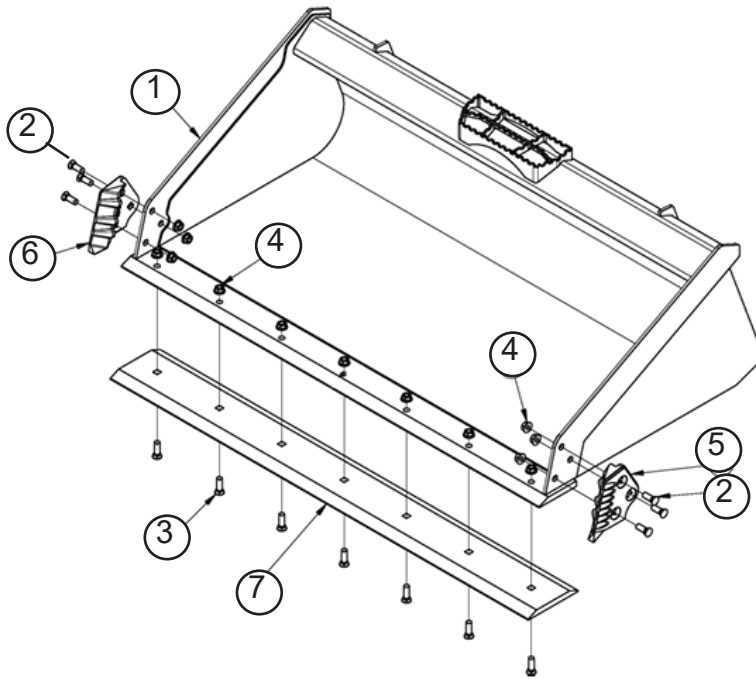


Ref. No	Part Description	Qty
1	Frame Weldment	1
2	Bucket Weldment	1
3	Dump Cylinder	2
4	Elbow 90°, Hoses to Cylinder	4
5	Pin, Cylinder Base End to Frame	2
6	Pin, Cylinder Rod End to Bucket	2
7	Pin, Pivot Between Bucket and Frame	2
8	Cutting Edge, Weld-On	1
9	Hose, Tee to Rod End of Cylinder	2
10	Hose, Tee to Base End of Cylinder	2
11	Tee, Between Supply Hoses and Cylinders	1
12	Hose, Tee to Quick Disconnects	2
13	Quick Disconnect, Set	1
14	Sleeve, Protective Hose-Specify Size and Length	AR

**Specify Bucket Width And Serial Number When Ordering Parts**

## 7.3 TOOTH BAR & SIDE CUTTERS DIAGRAM

### POSSIBLE ADDED FEATURES ON VARIOUS BUCKETS



Ref. No	Part Description	Qty
1	Side Edge	1
2	Side Cutter Bolts	6
3	Cutting Edge Bolts	7*
4	Nuts	4
5	Side Cutter (Part Number: 9217)	1
6	Side Cutter (Part Number: 9216)	1
7	Cutting Edge	1

\*QUANTITY DEPENDS ON SIZE.

**Specify Bucket Width And Serial Number When Ordering Parts**

# SECTION 8

## WARRANTY INFORMATION

### LIMITED WARRANTY

Construction Implements Depot, Inc. (CID) products are warranted to be free from defects in workmanship or materials for a period of 12 months from the initial sale.

### WARRANTY EXCLUSIONS

This warranty does not cover normal wear items, including but not limited to: bearings, hoses, blade holders, ground engaging parts such as teeth, blades, cutting edges, pilot bits, auger teeth and broom bristles. This warranty does not cover maintenance, service or adjustments. This warranty does not cover damage due to improper application or installation, misuse, negligence, accidents or improper maintenance. Please note:

Any modification or customization made to your attachment may void its warranty. This warranty is void if any components have been disassembled, i.e., pumps, gear boxes or motors or the attachment has been used without the case drain attached (if applicable). Be sure to follow all recommended Horsepower and GPM requirements as outlined in product specifications, in order to prevent the warranty from being void.

This warranty is contingent upon the use of approved BRAND parts exclusively. Any use of non-approved parts may result in voiding the warranty. Please be advised that the warranty does not cover refurbished attachments. Specially modified attachments built by the manufacturer to meet your needs shall not be warranted by CID, Inc.

### REPAIRS UNDER WARRANTY

**Any repairs, including welding, on attachments must be performed by certified repair technicians who have requested and obtained written approval from an authorized representative of CID before repairs begin.** If you are completing the repair, you must also have prior written approval to prevent the warranty from being voided.

### WARRANTY STATEMENT

Our obligation under this Limited Warranty shall be solely limited to repairing or replacing any part (see non-covered items above) that, according to our judgment, show evidence of a defect in quality of workmanship or materials for the stated 12 month warranty period. All defective parts must be routed directly to CID, Inc.



## **8.0 WARRANTY INFORMATION CONT.**

with freight or delivery charges to be prepaid. This limited warranty shall not be interpreted to render CID, Inc. liable for any injury or damage to persons, businesses or property of any kind nor expenses or losses incurred for labor, supplies, substitute machinery rental or for any other reason. Repair or replacement parts are subject to the supply conditions at the time of repair or replacements, which may directly affect our ability to obtain material and/or replacement parts. CID, Inc. reserves the right to make improvements in design or changes in specifications at any time without incurring any obligations to owners of previously purchased products. No one but CID, Inc. is allowed to alter, modify or enlarge this warranty nor the exclusions, limitations and reservation at any time. CID, Inc. products are warranted to be free from defects in workmanship or materials for a period of 12 months from the initial sale.

*Purchaser and Manufacturer hereby (a) submit to the non-exclusive jurisdiction of the courts of competent jurisdiction in North Carolina and Davidson County in which this company resides for resolution of any dispute concerning this Limited Warranty or the rights or obligations of Purchaser and/or Manufacturer; (b) agree that any litigation in connection with this Limited Warranty shall be venued in North Carolina and Davidson County in which the company resides and (c) waive any objection they may have as to any such action or proceeding brought in such court that such court is an inconvenient forum. Nothing herein shall limit the right of Purchaser or Manufacturer (or the right of any permitted successor or assign of either) to bring proceedings against the other in the courts of any other jurisdiction wherein any assets of such other party may be located.*

---

## **8.1 WARRANTY RETURN AUTHORIZATION POLICY**

### **WARRANTY RETURN AUTHORIZATION POLICY:**

If repairs are required, a Return Material Authorization (RMA) number must be obtained for the defective part as well as proof of purchase. RMA and services are rendered by CID only. Any responsibility of shipping costs on any item returned for repair is at the discretion of CID, Inc.

All returned parts must have the following:

1. A legible RMA number written on the outside of the package.
2. Warranty Claim Form (online)
3. The defective part.

RMA numbers are only valid for 30 days from the date of issue. All shipped replacement parts will require a Parts Order (PO) number from the original CID, Inc dealer. Repairs not covered by the warranty, will be charged for parts and labor at the current pricing rate. Should you have any problems with your attachment, please follow the instructions listed on the following page.

## 8.2 WARRANTY PROCEDURE

### WARRANTY RETURN AUTHORIZATION PROCEDURE:

1. Call the Warranty Department at (336) 859-2002 EXT 215. You will need to provide the model and serial number of the defective item(s) (see Appendix for where to find this information), a description of the problem, and have photographs available.
2. Upon a warranted issue, visit [www.cidattachments.com](http://www.cidattachments.com), click on the warranty tab, and fill in the warranty information on the Warranty Claim Form. CID, Inc will retain a Return Material Authorization (RMA) number of the defective part. If all the information above is completed CID, Inc will issue a RMA number via email.
3. Once you have an approved RMA number, a shipping label will be provided with CID's address and instructions for returning the defective part. **Appropriate RMA's/PO's will be invoiced and payment received while the evaluation process is being completed to prevent delays in your normal business operations. In the event the defective part(s) is un-warranted and repairs are not covered by the warranty, the customer will be invoiced for any additional parts and labor at the current pricing rate. If the part is deemed under warranty, a credit of the invoice will be issued.**
4. CID will ship a replacement part to the provided location or customer with a RMA identifier of some kind. **The customer is responsible for initial shipping charges until evaluation of the part has been completed.** If the part failure is covered by the warranty, the customer will be reimbursed for any paid shipping charges. In the event, the part is not covered by the warranty, the customer is responsible for return shipping.
5. Once the defective part is warranted by CID, the customer will be issued a credit and the PO number will no longer be active.
6. In the event CID decides that the attachment needs to be returned to them for repair, CID will make arrangements for pickup and return. Repairs will be performed by CID qualified technicians. Non-warranted issues will be discussed, and repairs will be performed upon the owner's agreement and receipt of payment for parts and labor.









## APPENDIX A FINDING YOUR MODEL AND SERIAL NUMBER

The Model and Serial numbers will be in one place and will either be etched into the attachment or on a Data Plate.

Instructions: Stand at the back of the attachment facing the attachment mounting bracket and look in the following locations:

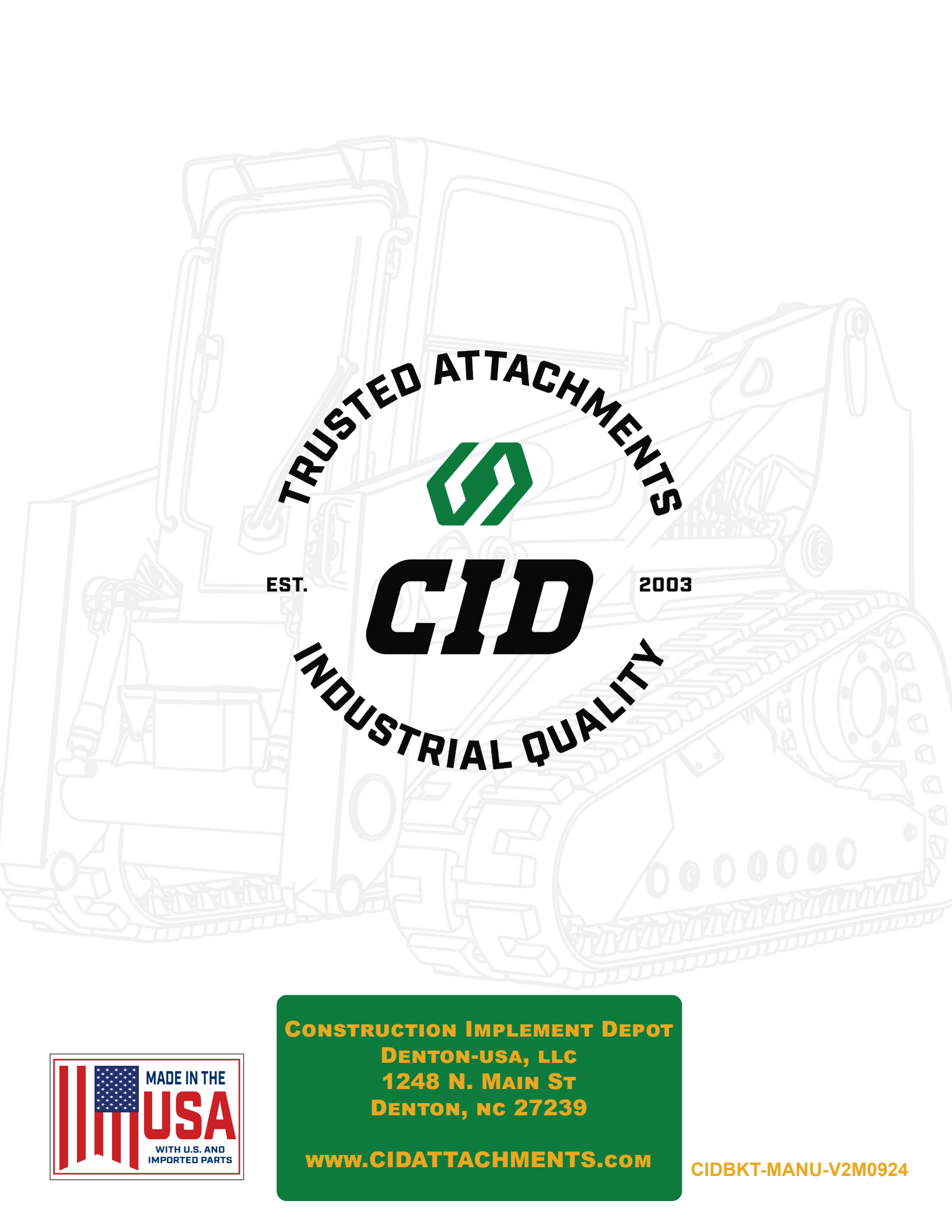
1) Back- top left area

Model and Serial  
Number  
Data Plate



PLEASE NOTE: The Model and Serial number may be etched or on a Data Plate.

Disclaimer: Any critical changes made to this manual by individuals outside the manufacturer's authorized personnel are doing so at their own risk. The manufacturer cannot be held legally responsible for any consequences, damages, or liabilities resulting from such modifications. It is advised to adhere strictly to the original manual provided by the manufacturer for optimal performance, safety, and reliability.



**TRUSTED ATTACHMENTS**



EST.

**CID**

2003

**INDUSTRIAL QUALITY**



**CONSTRUCTION IMPLEMENT DEPOT  
DENTON-USA, LLC  
1248 N. MAIN ST  
DENTON, NC 27239**

**[www.CIDATTACHMENTS.com](http://www.CIDATTACHMENTS.com)**

**CIDBKT-MANU-V2M0924**