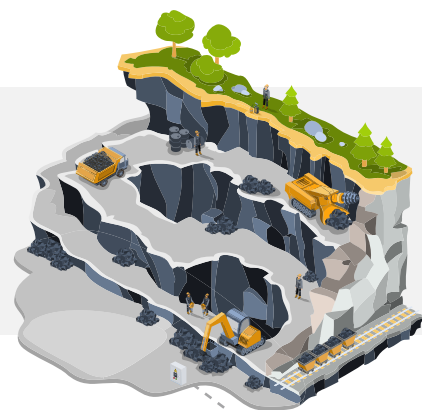


BLAST MONITORING WITH AIRLINK® GATEWAYS

Remote Monitoring for Mining Operations

Deep Earth Logic is one of the nation's largest blast monitoring companies. Established in 2012 and based in North Carolina, the company monitors the impact of controlled blasting in quarries across the US. Organizations like them need to deliver fast and reliable data transmissions to their clients and the regulatory agencies that oversee them.



Company Challenge | COMMUNICATING SEISMOGRAPH DATA

Quarry operators routinely perform controlled blasting in order to replenish their supply of gravel, fill and gradient used in the construction of roads, parking lots, and cement. Legislation requires that such blasting be monitored to protect people, property and the environment. Quarries often outsource the blasting and ongoing blast monitoring to external firms. A seismograph is used to ensure that both ground vibration and air-over pressure are within specified ranges.

Past Solutions | RAVEN XT AND LS300 GATEWAYS

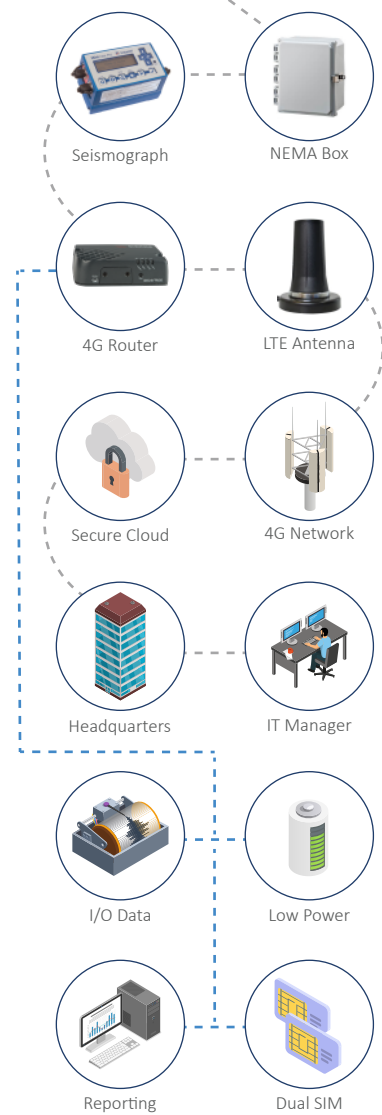
When Deep Earth approached the USAT team back in 2012, we created a 2G solution with Sierra Wireless and Instantel that utilized the AirLink® Raven XT. We incorporated their seismograph along with our gateways and antennas, within NEMA boxes their clients could mount along designated areas at quarries and mines. In 2016, with their needs expanding, customer base growing, and advances in 3G technologies, we re-engineered their solution to utilize the AirLink® LS300.

Current Solution | RUGGED RV50X GATEWAYS

Today, with even greater advances in cellular technology, USAT Regional Managers, like Daniel Johnson, deliver clients like Deep Earth the AirLink RV50X® to serve their remote monitoring needs. This purpose-built ruggedized low-power router, in combination with a highly durable MGRM-WLF antenna, enabled wide area connectivity and real-time event monitoring at each of Deep Earth's client job sites across all of North Carolina.

Field-Tested Results | FASTER MORE RELIABLE REPORTING

The RV50X and WGRM-WLF were designed for harsh environments and industrial uses like those of Deep Earth Logic. The simplicity of the solution makes it ideal for remote and blast monitoring applications that require reliability and durability. The Deep Earth team trusts USAT to keep them abreast of the newest technologies- helping them deliver client data securely and rapidly year after year in the face of ever advancing technologies.



4G LTE Router: AirLink® RV50X	Antenna: MGRM-WLF	Software: ALMS
---	-----------------------------	--------------------------

CONTACT ONE OF OUR SOLUTIONS ENGINEERS TODAY

