



SAM-R | Rotatable Speed Alert Monitor

STALKER SAM-R

The Stalker SAM-R trailer takes all of the features our customers have asked for and put them into one efficient, versatile, and heavy duty package.

■ STALKER K-BAND DOPPLER RADAR

Pure Stalker - Accurate and durable with greater range, sensitivity and tracking.

■ HAND-HELD CONTROLLER

Provides programming and diagnostic functions.



■ 18" AMBER LED CHARACTERS

Legible at up to 1000 ft.

■ GROUP 27 - 12-VOLT BATTERY

Provides 8 - 10 days of continuous operation.

■ TRAVEL CONFIGURATION

The display panels rotate and lock for easier towing and improved wind resistance.



OPTIONAL:

■ SOLAR PANELS

Recharge a day's worth of battery use with only 2.5 to 3 hours of sunlight allowing for long-term field operation.



■ STATISTICAL PACKAGE

Gathers valuable traffic data for improved grant writing support and verification of the sign's impact on traffic speeds.

■ PROGRAMMABLE LED VIOLATOR ALERT

(3) User-programmable settings in choice of red/blue or white/white.

The Stalker Rotatable Speed Alert Monitor (SAM-R) features 18-inch amber LED characters that are visible at up to 1000 feet. A convenient hand-held controller, Stalker K-Band Doppler radar, and an 8- to 10-day battery round out its standard configuration. Its rotating display and small footprint make towing and deployment easy enough for one person. Plus, optional equipment includes solar panels, a traffic statistics package, and programmable LED violator alerts. It's a versatile, lightweight speed alert trailer rugged enough for continuous duty.



STALKER®

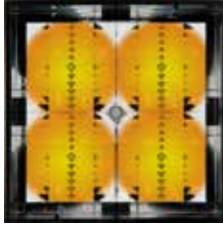
Power to Enforce.

stalkerRadar.com

LED Lamp Matrix and Pulse Modulation

At the heart of the Stalker SAM-R is Precision Solar Control's LED Lamp Matrix and LED Pulse Width Modulation. The LED Lamp Matrix concentrates and focuses the LEDs' light, allowing the motorist to see the sign at a greater distance and, thus, act on the speed warning more quickly.

LED Pulse Width Modulation significantly increases the time between battery charges and powers the LEDs so that they remain at a consistent brightness throughout the battery's discharge cycle.



Stalker Traffic Speed Sensor K-Band Radar

The speed measurement component is pure Stalker - accurate and durable. Stalker's Stationary Speed Sensor II radar has greater range, sensitivity, and tracking when compared to competitive signs' radar.



Group 27 12-volt battery Provides 8-10 days of continuous operation yielding longer operational time between battery charges - longer time with 2nd battery installed.

Graffiti-resistant paint

The finish keeps the trailer looking clean and neat for a professional department image, while its all steel construction provides a sturdy

platform and reduces damage sustained in the field.

Dedicated hand-held controller

Complete programming and diagnostic functions in the palm of your hand.



Four stabilizing/leveling supports

One officer can position the SAM-R on nearly any type of terrain.

Removable tongue

Options:

Top-mounted solar panel

recharges a day's worth of battery use with only 2.5 to 3 hours of sunlight allowing for long-term field operation.



Programmable Violator LED Alert

High powered LED Violator Alert flashes to warn motorists when they have exceeded a pre-set speed. Three (3) different user-programmable settings and choice of blue/red or white/white LEDs.



Integrated statistical package

gathers valuable traffic data for improved grant writing support and verification of the sign's impact on traffic speeds.

Additional Group 27 battery



Specifications:

TRAILER

Width	68" (1.73m)
Length	110" (2.8m) tongue in travel position 57½" (1.5m) tongue removed
Height	76" (1.93m) with solar option
Weight	680 lbs. (308 kg)
Main Frame	2" x 4" x .120" Steel Tubing

DISPLAY CABINET

Material Thickness	.156" ABS Plastic
Width	36" (.91m)
Height	25½" (.65m)
Depth	5¼" (.13m)

Lexan® Window Thickness .125"

Cabinet Temperature Delta ± 20°

ENERGY SOURCE

Battery Bank	Group 27 12-volt Battery 8-10 days @ 78°F (25°C)
--------------	---

RADAR - STALKER STATIONARY SPEED SENSOR II - 24.125 GHz

Detection Distance	Up to 1,200' (365 m)
Beam Width	30° x 32°

Accessories:



Wheel Lock



Coupler Lock

Also Available

- Spare Tire
- 2nd Battery

STALKER®

Power to Enforce.

applied concepts, inc.

855 East Collins Blvd. ■ Richardson, Texas 75081
972.398.3780 ■ Fax 972.398.3781

Copyright © 2019 Applied Concepts, Inc. All Rights Reserved. Specifications are subject to change.

006-0504-00 Rev C

800-STALKER



Stalker Traffic Analyst | Powerful Traffic Data Tool

Making traffic statistics work for you.

Collect and analyze valuable traffic data in support of Grant applications and community policing, with industry-leading effectiveness.

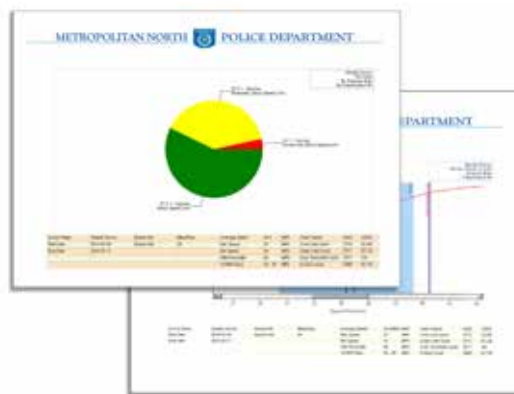
The very first section in most Grant applications is to define the need. Whether for adjusting a speed limit, purchasing a speed/message sign, or allocation of department resources, properly assembled traffic data can make all of the difference between winning or losing an application. Powerful traffic statistic tools are essential when analyzing aggregate data.

The new Stalker Traffic Analyst is that tool. Updated analysis controls allow the user to take raw data and display it by count vs time, count vs speed, and 85th percentile, just to name a few. Data can be split, graphed, filtered, and then rendered in a color report designed with Agency Branding and support information.

Beginning with the setup, intuitive survey management tools walk the user through calendar setup, location details, speed and time resolutions, vehicle classification, speeds, distances, and more.



- **Intuitive Survey and Calendar setup**
- **Powerful Visual analysis**
- **Easy, user-defined report generation** ▶
- **Compare and toggle between multiple reports**
- **Group file operations into project folder**



STALKER®

Power to Enforce.

StalkerRadar.com



Powerful Visual Analysis

The analysis window is the visual heart of the program. The floating palettes control the visual display and survey details may be added such as Google Map/satellite views, descriptions, and notes.



Floating Palettes

■ Analysis Control

The Analysis Control palette where the analysis type is chosen and then applied to the analysis window.

- Count vs Time
- Weekly Count vs Time
- Count vs Speed
- Percentile Chart
- Average Speed vs Time
- Speed vs Time Bubble Chart
- Enforcement - Pie chart - **NEW**

A simple tool for Law Enforcement, citizens, city council, and management. Quickly display vehicle speeds below, moderately above, and excessively above speed limit threshold.

■ Graphic Controls

The Graph Controls palette provides additional options such as grid detail, data values, display type (graph or tabular) and graph type.

■ Data Filtering

Fine tune the data by more selective parameters such speed, dates, times, classification, and traffic direction.



Analysis Window

Stalker Traffic Analyst

StalkerTrafficAnalyst 2.0.0.0

Stalker

Survey Settings

Survey Name

2016/10/10 16:00:00

Survey Date

Survey Results

Date	Time	Starting Count	Total Count	Average Speed	Photo No. Taken	Dir. Detected	Avg. Weather Dir.	Final Count
10/10/2016	16:00	1	1	30	43	9	43	33
10/10/2016	16:05	1	1	30	43	9	43	33
10/10/2016	16:10	1	1	40	43	10	43	33
10/10/2016	16:15	1	1	40	43	10	43	33
10/10/2016	16:20	1	1	40	43	10	43	33
10/10/2016	16:25	1	1	40	43	10	43	33
10/10/2016	16:30	1	1	40	43	10	43	33
10/10/2016	16:35	1	1	40	43	10	43	33
10/10/2016	16:40	1	1	40	43	10	43	33
10/10/2016	16:45	1	1	40	43	10	43	33
10/10/2016	16:50	1	1	40	43	10	43	33
10/10/2016	16:55	1	1	40	43	10	43	33
10/10/2016	17:00	1	1	40	43	10	43	33
10/10/2016	17:05	1	1	40	43	10	43	33
10/10/2016	17:10	1	1	40	43	10	43	33
10/10/2016	17:15	1	1	40	43	10	43	33
10/10/2016	17:20	1	1	40	43	10	43	33
10/10/2016	17:25	1	1	40	43	10	43	33
10/10/2016	17:30	1	1	40	43	10	43	33
10/10/2016	17:35	1	1	40	43	10	43	33
10/10/2016	17:40	1	1	40	43	10	43	33
10/10/2016	17:45	1	1	40	43	10	43	33
10/10/2016	17:50	1	1	40	43	10	43	33
10/10/2016	17:55	1	1	40	43	10	43	33
10/10/2016	18:00	1	1	40	43	10	43	33
10/10/2016	18:05	1	1	40	43	10	43	33
10/10/2016	18:10	1	1	40	43	10	43	33
10/10/2016	18:15	1	1	40	43	10	43	33
10/10/2016	18:20	1	1	40	43	10	43	33
10/10/2016	18:25	1	1	40	43	10	43	33
10/10/2016	18:30	1	1	40	43	10	43	33
10/10/2016	18:35	1	1	40	43	10	43	33
10/10/2016	18:40	1	1	40	43	10	43	33
10/10/2016	18:45	1	1	40	43	10	43	33
10/10/2016	18:50	1	1	40	43	10	43	33
10/10/2016	18:55	1	1	40	43	10	43	33
10/10/2016	19:00	1	1	40	43	10	43	33
10/10/2016	19:05	1	1	40	43	10	43	33
10/10/2016	19:10	1	1	40	43	10	43	33
10/10/2016	19:15	1	1	40	43	10	43	33
10/10/2016	19:20	1	1	40	43	10	43	33
10/10/2016	19:25	1	1	40	43	10	43	33
10/10/2016	19:30	1	1	40	43	10	43	33
10/10/2016	19:35	1	1	40	43	10	43	33
10/10/2016	19:40	1	1	40	43	10	43	33
10/10/2016	19:45	1	1	40	43	10	43	33
10/10/2016	19:50	1	1	40	43	10	43	33
10/10/2016	19:55	1	1	40	43	10	43	33
10/10/2016	20:00	1	1	40	43	10	43	33
10/10/2016	20:05	1	1	40	43	10	43	33
10/10/2016	20:10	1	1	40	43	10	43	33
10/10/2016	20:15	1	1	40	43	10	43	33
10/10/2016	20:20	1	1	40	43	10	43	33
10/10/2016	20:25	1	1	40	43	10	43	33
10/10/2016	20:30	1	1	40	43	10	43	33
10/10/2016	20:35	1	1	40	43	10	43	33
10/10/2016	20:40	1	1	40	43	10	43	33
10/10/2016	20:45	1	1	40	43	10	43	33
10/10/2016	20:50	1	1	40	43	10	43	33
10/10/2016	20:55	1	1	40	43	10	43	33
10/10/2016	21:00	1	1	40	43	10	43	33
10/10/2016	21:05	1	1	40	43	10	43	33
10/10/2016	21:10	1	1	40	43	10	43	33
10/10/2016	21:15	1	1	40	43	10	43	33
10/10/2016	21:20	1	1	40	43	10	43	33
10/10/2016	21:25	1	1	40	43	10	43	33
10/10/2016	21:30	1	1	40	43	10	43	33
10/10/2016	21:35	1	1	40	43	10	43	33
10/10/2016	21:40	1	1	40	43	10	43	33
10/10/2016	21:45	1	1	40	43	10	43	33
10/10/2016	21:50	1	1	40	43	10	43	33
10/10/2016	21:55	1	1	40	43	10	43	33
10/10/2016	22:00	1	1	40	43	10	43	33
10/10/2016	22:05	1	1	40	43	10	43	33
10/10/2016	22:10	1	1	40	43	10	43	33
10/10/2016	22:15	1	1	40	43	10	43	33
10/10/2016	22:20	1	1	40	43	10	43	33
10/10/2016	22:25	1	1	40	43	10	43	33
10/10/2016	22:30	1	1	40	43	10	43	33
10/10/2016	22:35	1	1	40	43	10	43	33
10/10/2016	22:40	1	1	40	43	10	43	33
10/10/2016	22:45	1	1	40	43	10	43	33
10/10/2016	22:50	1	1	40	43	10	43	33
10/10/2016	22:55	1	1	40	43	10	43	33
10/10/2016	23:00	1	1	40	43	10	43	33
10/10/2016	23:05	1	1	40	43	10	43	33
10/10/2016	23:10	1	1	40	43	10	43	33
10/10/2016	23:15	1	1	40	43	10	43	33
10/10/2016	23:20	1	1	40	43	10	43	33
10/10/2016	23:25	1	1	40	43	10	43	33
10/10/2016	23:30	1	1	40	43	10	43	33
10/10/2016	23:35	1	1	40	43	10	43	33
10/10/2016	23:40	1	1	40	43	10	43	33
10/10/2016	23:45	1	1	40	43	10	43	33
10/10/2016	23:50	1	1	40	43	10	43	33
10/10/2016	23:55	1	1	40	43	10	43	33
10/10/2016	00:00	1	1	40	43	10	43	33
10/10/2016	00:05	1	1	40	43	10	43	33
10/10/2016	00:10	1	1	40	43	10	43	33
10/10/2016	00:15	1	1	40	43	10	43	33
10/10/2016	00:20	1	1	40	43	10	43	33
10/10/2016	00:25	1	1	40	43	10	43	33
10/10/2016	00:30	1	1	40	43	10	43	33
10/10/2016	00:35	1	1	40	43	10	43	33
10/10/2016	00:40	1	1	40	43	10	43	33
10/10/2016	00:45	1	1	40	43	10	43	33
10/10/2016	00:50	1	1	40	43	10	43	33
10/10/2016	00:55	1	1	40	43	10	43	33
10/10/2016	01:00	1	1	40	43	10	43	33
10/10/2016	01:05	1	1	40	43	10	43	33
10/10/2016	01:10	1	1	40	43	10	43	33
10/10/2016	01:15	1	1	40	43	10	43	33
10/10/2016	01:20	1	1	40	43	10	43	33
10/10/2016	01:25	1	1	40	43	10	43	33
10/10/2016	01:30	1	1	40	43	10	43	33
10/10/2016	01:35	1	1	40	43	10	43	33
10/10/2016	01:40	1	1	40	43	10	43	33
10/10/2016	01:45	1	1	40	43	10	43	33
10/10/2016	01:50	1	1	40	43	10	43	33
10/10/2016	01:55	1	1	40	43	10	43	33
10/10/2016	02:00	1	1	40	43	10	43	33
10/10/2016	02:05	1	1	40	43	10	43	33
10/10/2016	02:10	1	1	40	43	10	43	33
10/10/2016	02:15	1	1	40	43	10	43	33
10/10/2016	02:20	1	1	40	43	10	43	33
10/10/2016	02:25	1	1	40	43	10	43	33
10/10/2016	02:30	1	1	40	43	10	43	33
10/10/2016	02:35	1	1	40	43	10	43	33
10/10/2016	02:40	1	1	40	43	10	43	33
10/10/2016	02:45	1	1	40	43	10	43	33
10/10/2016	02:50	1	1	40	43	10	43	33
10/10/2016	02:55	1	1	40	43	10	43	33
10/10/2016	03:00	1	1	40	43	10	43	33
10/10/2016	03:05	1	1	40	43	10	43	33
10/10/2016	03:10	1	1	40	43	10	43	33
10/10/2016	03:15	1	1	40	43	10	43	33
10/10/2016	03:20	1	1	40	43	10	43	33
10/10/2016	03:25	1	1	40	43	10	43	33
10/10/2016	03:30	1	1	40	43	10	43	33
10/10/2016	03:35	1	1	40	43	10	43	33
10/10/2016	03:40	1	1	40	43	10	43	33
10/10/2016	03:45	1	1	40	43	10	43	33
10/10/2016	03:50	1	1	40	43	10	43	33
10/10/2016	03:55	1	1	40	43	10	43	33
10/10/2016	04:00	1	1	40	43	10	43	33
10/10/2016	04:05	1	1	40	43	10	43	33
10/10/2016	04:10	1	1	40	43	10	43	33
10/10/2016	04:15	1	1	40	43	10	43	33
10/10/2016	04:20	1	1	40	43	10	43	33
10/10/2016	04:25	1	1	40	43	10	43	33
10/10/2016	04:30	1	1	40	43	10	43	33
10/10/2016	04:35	1	1	40	43	10	43	33
10/10/2016	04:40	1	1	40	43	10	43	33
10/10/2016	04:45	1	1	40	43	10	43	33
10/10/2016	04:50	1	1	40	43	10	43	33
10/10/								