
 <i>Together, Serving Up World Flavors.</i>		<b>FINISHED PRODUCT SPECIFICATION</b>	
		<b>Document:</b>	Research and Development
<b>Effective Date:</b> 10/05/2022		<b>Program:</b>	Specification Program
<b>Revised By:</b> <i>Nancy Zuniga</i>		<b>Location:</b>	GDF/TONNE
<b>Approved By:</b> <i>Nick Spondike, Chief Innovation Officer</i>			

Item Name: 7IN NEW YORK STYLE PITA BREAD 12/10 CNT Item Number: BAL025

FINAL WEIGHT PER PITA			
	3.3 oz		94 g
FINISHED PITA DIMENSIONS			
	MINIMUM	TARGET	MAXIMUM
WEIGHT (oz)	3.05	3.30	3.55
LENGTH (in.)	6.75	7.00	7.25
WIDTH (in.)	N/A	N/A	N/A
HEIGHT (in.)	N/A	N/A	N/A

### ITEM DESCRIPTION

**Flavor:** Typical Pita Baked Flavor, no off flavor or aroma

**Appearance/Color:** Round Slightly brown on Top and Bottom with Bubbles on top of bread

**Texture:** Typical of pita bread

### ITEM PACKAGING

<b>Primary Packaging:</b>	Printed Bags & Quick Locks	<b>Primary Case Type:</b>	PRINTED BOX
<b>No. of Pieces / Bag:</b>	10 Pieces Per Bag	<b>No. of Bags / Case:</b>	12 count bags
<b>Cases Per Pallet:</b>	45 Cases per pallet	<b>Case Gross Wt. (lbs):</b>	26.25 lbs
<b>Rows Per Pallet (Hi):</b>	9 cases high	<b>Case Gross Wt. (kg):</b>	11.9 kg
<b>Cases Per Row (Ti):</b>	5 cases per layer	<b>Case Net Wt. (lbs):</b>	24.75 lbs
<b>Case Dimensions:</b>	22.25 x 14.75 x 8.125 in.	<b>Case Net Wt. (kg):</b>	11.2 kg
<b>UPC Number:</b>	0-75365-00025-5	<b>Cases Cube (Cu. Ft.):</b>	1.54 Cu. Ft.
<b>GTIN Code Number:</b>	0-00-75365-00025-5	<b>Pallet Weight (lbs/kg):</b>	1226 lbs (556 kg)

### STORAGE & SHELF LIFE & CODE DATE FORMAT

<b>Storage Conditions:</b>	FROZEN (0°F)	<b>Distributed:</b>	10°F or Less
<b>Shelf Life from Production:</b>	Frozen (0°F): <b>9 Months (270 days)</b>	<b>Code Date Format:</b>	Unit Packaging Container
	Ambient (70°F): <b>2 Days</b>		1 Digit Year + Julian Date + Shift + MT
			Case Shipping Container
			1 Digit Year + Julian Date + Shift + Best By 270 Days Date + MT

<b>Certified Kosher</b>
NO

<b>Certified Halal</b>
NO



<b>Certified Organic</b>
NO

<b>Certified CN</b>
NO

### INGREDIENT STATEMENT

**INGREDIENTS:** Enriched Wheat Flour (Wheat Flour, Malted Barley Flour, Niacin, Reduced Iron, Thiamine Mononitrate [B1], Riboflavin [B2], Folic Acid), Water, Contains less than 2% of Soybean Oil and/or Canola Oil, Yeast, Salt, Sugar, Dough Conditioner (Wheat Flour, Calcium Sulfate, Guar Gum, Mono- and Diglycerides, and Enzymes [Bromelain, Amylase and Glucose Oxidase]), Baking Powder (Sodium Acid Pyrophosphate, Sodium Bicarbonate, Cornstarch, Monocalcium Phosphate), Nonfat Dry Milk, Calcium Propionate and Potassium Sorbate (Preservatives), Guar Gum, Yeast Nutrients (Calcium Sulfate, Ammonium Sulfate, Ascorbic Acid, Enzymes [Amylase, Glucose Oxidase and Hemicellulose]).

**CONTAINS: MILK, WHEAT.**

 <i>Together, Serving Up World Flavors.</i>		<b>FINISHED PRODUCT SPECIFICATION</b>	
<b>Effective Date:</b> 10/05/2022		<b>Document:</b> Research and Development	
<b>Revised By:</b> Nancy Zuniga		<b>Program:</b> Specification Program	
<b>Approved By:</b> Nick Spondike, Chief Innovation Officer		<b>Location:</b> GDF/TONNE	

## NUTRITIONALS PER SERVING SIZE

Recommend Serving Size: 1 Pita - 3.3 oz. (94 g)  
 Servings Per Container: 10



<b>Nutrition Facts</b>	
10 servings per container	
<b>Serving size</b>	<b>1 Pita 3.3 oz (94g)</b>
<b>Amount per serving</b>	
<b>Calories</b>	<b>210</b>
<b>% Daily Value*</b>	
<b>Total Fat</b> 2.5g	<b>3%</b>
Saturated Fat 0g	<b>0%</b>
Trans Fat 0g	
<b>Cholesterol</b> 0mg	<b>0%</b>
<b>Sodium</b> 540mg	<b>23%</b>
<b>Total Carbohydrate</b> 41g	<b>15%</b>
Dietary Fiber 2g	<b>7%</b>
Total Sugars 2g	
Includes 1g Added Sugars	<b>2%</b>
<b>Protein</b> 7g	
Vitamin D 0mcg	<b>0%</b>
Calcium 72mg	<b>6%</b>
Iron 3mg	<b>15%</b>
Potassium 209mg	<b>4%</b>
*The % Daily Value tells you how much a nutrient in a serving of food contributes to a daily diet. 2,000 calories a day is used for general nutrition advice.	
Calories per gram: Fat 9 • Carbohydrate 4 • Protein 4	

### Nutrient Content Claims Per Serving Size:

Low Fat  
 Low Saturated Fat  
 Low Cholesterol  
 High Vitamin B-1  
 High Vitamin B-2  
 High Folate  
 Good source of Iron

## ALLERGENS AND OTHER SENSITIVE INGREDIENTS

	Column I	Column II	Column III
ALLERGEN	Present in the Product	Present in other products manufactured on the same line	Present in the same manufacturing plant
Peanut	NO	NO	NO
Tree Nuts	NO	NO	NO
Milk and Dairy Products	YES	YES	YES
Eggs	NO	NO	YES
Fish	NO	NO	NO
Shellfish and Molluscs	NO	NO	NO
Soy	NO	NO	YES
Wheat	YES	YES	YES
Sesame Seeds	NO	NO	YES
Sulfites	NO	NO	YES
Monosodium Glutamate (MSG)	NO	NO	YES

 		<b>FINISHED PRODUCT SPECIFICATION</b>
<b>Effective Date:</b> 10/05/2022		<b>Document:</b> Research and Development
<b>Revised By:</b> Nancy Zuniga		<b>Program:</b> Specification Program
<b>Approved By:</b> Nick Spondike, Chief Innovation Officer		<b>Location:</b> GDF/TONNE

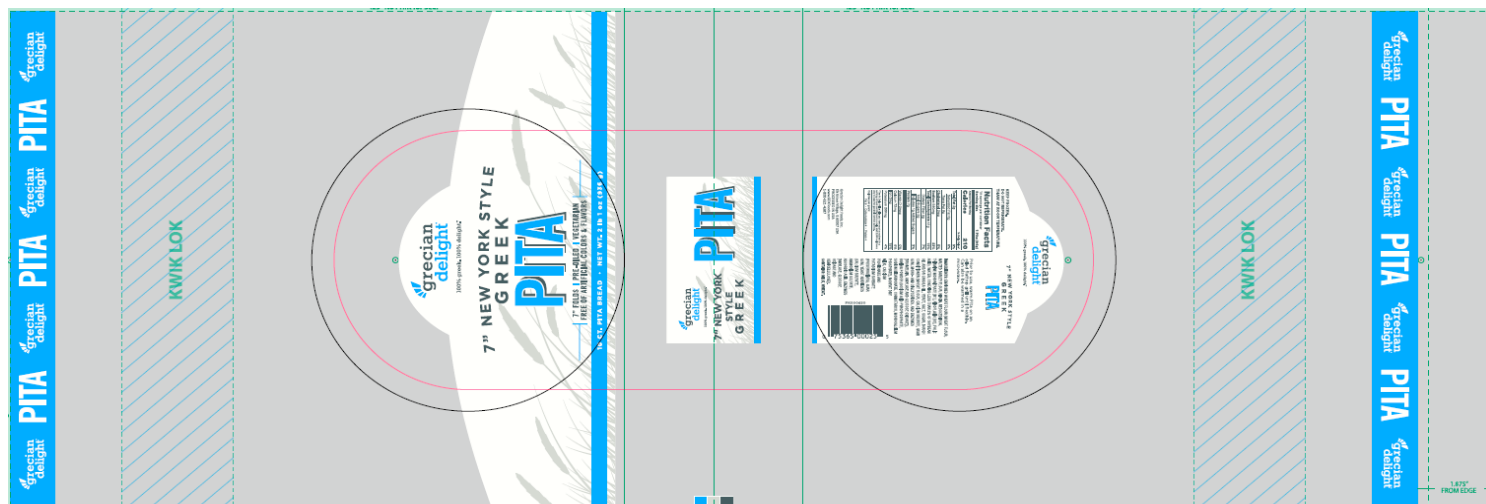
## NUTRITIONALS VALUES (100g UNROUNDED)

**Product:** 7IN NEW YORK STYLE PITA BREAD 12/10 CNT

**GENESIS EFFECTIVE DATE :** 06/21/2021

Nutrients	Per 100g	Nutrients	Per 100g	Nutrients	Per 100g	Nutrients	Per 100g
<b>Basic Components</b>		Trans Fatty Acid (g)	0.02	Vitamin B12 (mcg)	0.00	Magnesium (mg)	0.07
Gram Weight (g)	100.00	Cholesterol (mg)	0.57	Biotin (mcg)	0.00	Manganese (mg)	0.00
Calories (kcal)	226.26	Water (g)	41.59	Vitamin C (mg)	1.58	Molybdenum (mcg)	0.00
Calories from Fat (kcal)	21.54	Ash (g)	0.00	Vitamin D - IU (IU)	0.00	Phosphorus (mg)	50.49
Calories from SatFat (kcal)	3.14	Insoluble Fiber (g)	0.00	Vitamin D - mcg (mcg)	0.00	Potassium (mg)	221.86
Protein (g)	7.79	<b>Vitamins</b>		Vitamin E - Alpha-Toco (mg)	0.00	Selenium (mcg)	0.01
Carbohydrates (g)	43.87	Vitamin A - IU (IU)	5.38	Folate (mcg)	100.85	Sodium (mg)	579.71
Dietary Fiber 2016 (g)	1.67	Vitamin A - RE (RE)	0.00	Folate, DFE (mcg)	158.99	Zinc (mg)	0.00
Soluble Fiber 2016 (g)	0.10	Vitamin A - RAE (RAE)	0.00	Vitamin K (mcg)	0.00	Chloride (mg)	0.00
Total Sugars (g)	1.77	Carotenoid RE (RE)	0.00	Pantothenic Acid (mg)	0.24	<b>Poly Fats</b>	
Added Sugars (g)	1.27	Retinol RE (RE)	45.09	<b>Minerals</b>		Omega 3 Fatty Acid	0.00
Disaccharides (g)	0.00	Beta-Carotene (mcg)	7.12	Calcium (mg)	77.1	Omega 6 Fatty Acid	0.00
Other Carbs (g)	0.00	Vitamin B1 (mg)	0.51	Chromium (mcg)	0.00	<b>Other Nutrients</b>	
Fat (g)	2.39	Vitamin B2 (mg)	0.30	Copper (mg)	0.00	Alcohol (g)	0.00
Saturated Fat (g)	0.35	Vitamin B3 (mg)	3.58	Fluoride (mg)	0.00	Caffeine (mg)	0.00
Mono Fat (g)	0.36	Niacin Equiv (mg)	0.27	Iodine (mcg)	0.00	Choline (mg)	0.00
Poly Fat (g)	0.84	Vitamin B6 (mg)	0.00	Iron (mg)	3.27		

## PRINTED BAG



# FINISHED PRODUCT SPECIFICATION

**Document:** Research and Development

**Effective Date:** 10/05/2022

**Program:** Specification Program

**Revised By:** Nancy Zuniga

**Location:** GDF/TONNE

**Approved By:** Nick Spondike, Chief Innovation Officer

## PALLET PATTERN

Product Name Grecian Delight Bakery

Product Code 60025R

Datafile Name w07013 (10/4/2011)

Load Ref. 1 I

Cube Used 83.3 %

5 Special RSC / Layer

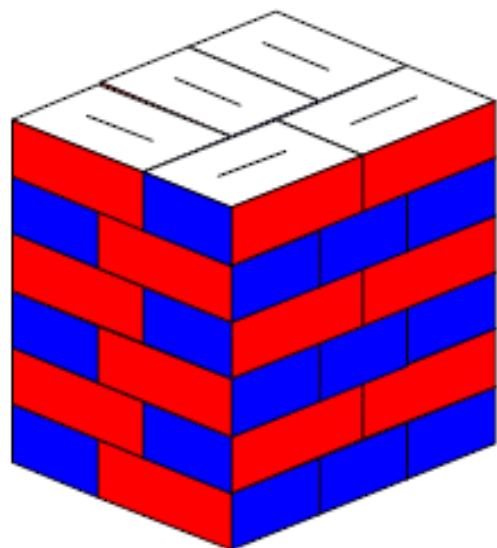
Area Used 85.5 %

9 Layer / Load

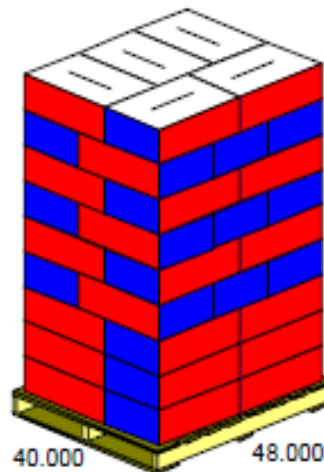
Pallet type 48x402wy

45 Special RSC / Load

	Length	Width	Height	Net	Gross	Volume
Special (OD)	22.250	14.750	8.125 in	24.750	26.250 lb	1.54 cuft
Product	44.500	37.000	73.125 in	1113.750	1181.250 lb	69.68 cuft
Load	48.000	40.000	78.125 in	1181.250	1226.250 lb	86.81 cuft



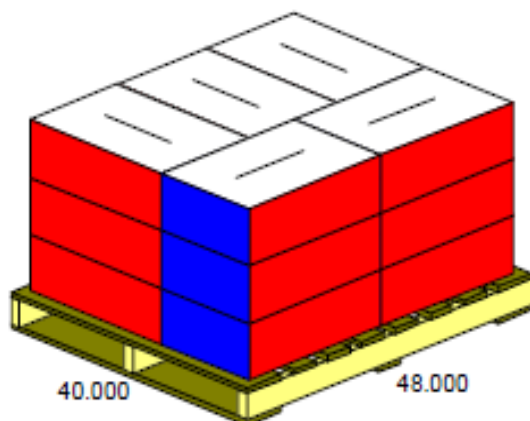
78.125



78.125

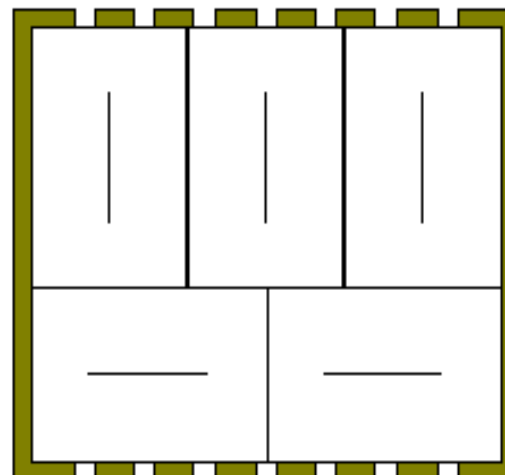
40.000

48.000



40.000

48.000



40.000

48.000