

# FINISHED PRODUCT SPECIFICATION

**Document:** Research and Development

**Effective Date:** 06/27/2023

**Program:** Specification Program

**Revised By:** Nancy Zuniga

**Location:** GH/KRONOS

**Approved By:** Nick Spondike, Chief Innovation Officer

**Item Name:** Pocket Pita Pre-cut 6" Whole Wheat

**Item Number:** 002222



FINAL WEIGHT PER PITA			
	2.5 oz	71 g	
FINISHED PITA DIMENSIONS			
	MINIMUM	TARGET	MAXIMUM
WEIGHT (g)	70	71	72
LENGTH (in.)	6.14	6.00	6.50
WIDTH (in.)	N/A	N/A	N/A
HEIGHT (in.)	N/A	N/A	N/A
MOISTURE	30%	32%	34%
FINISHED pH	5.4	5.5	5.65

## ITEM DESCRIPTION

**Flavor:** Typical Baked Flavor

**Color:** Fully Baked with Toast Points on Top and Bottom

**Texture:** Firm, Moist and Tender

## ITEM PACKAGING

<b>Primary Packaging:</b>	Printed Bags / Cardboard Divider
<b>No. of Pieces / Bag:</b>	10 Pitas
<b>No. of Pieces / Case:</b>	120 Pitas
<b>Cases Per Pallet:</b>	49 cases
<b>Rows Per Pallet (Hi):</b>	7 High
<b>Cases Per Row (Ti):</b>	7 Per Layer
<b>Case Dimensions:</b>	19.563 x 13.563 x 10.750 in
<b>UPC Code Number:</b>	0 77589 40222 8

<b>Primary Labe Type:</b>	Printed box
<b>No. of Bags / Case:</b>	12 count bags
<b>Case Gross Wt. (lbs):</b>	20.00 lbs
<b>Case Gross Wt. (kg):</b>	9.07 kg
<b>Case Net Wt. (lbs):</b>	18.75 lbs
<b>Case Net Wt. (kg):</b>	8.50 kg
<b>Cases Cube (Cu. Ft.):</b>	1.65 Cu. Ft.
<b>Pallet Weight (lbs/kg):</b>	1030 lbs (467 kg)

## STORAGE & SHELF LIFE & CODE DATE FORMAT

<b>Storage Conditions:</b>	FROZEN (0°F)
<b>Shelf Life from Production:</b>	Frozen (0°F): 9 Months (270 days) Refrigerated (40°F): 14 Days Ambient (70°F): 7 Days

<b>Distributed:</b>	10°F or Less
<b>Code Date Format:</b>	Kwik Lok: <b>163-20 N 22:43</b> <b>Example: 163</b> (Julian Date) <b>20</b> (Year) <b>N</b> (Shift) <b>22:43</b> (Military Hour) MasterCase: <b>163-20 22:43</b> <b>Example: 163</b> (Julian Date) <b>20</b> (Year) <b>22:43</b> (Military Hour)

**Certified Kosher**  
YES

**Certified Halal**  
NO

**Certified Organic**  
NO

**Certified CN**  
NO

## INGREDIENT STATEMENT

### INGREDIENTS

Whole wheat flour, enriched flour (wheat flour, malted barley flour, niacin, iron, thiamin mononitrate, riboflavin, folic acid), water, wheat gluten, yeast, contains 2% or less of the following: salt, calcium propionate (preservative), guar gum, cellulose gum, acacia gum, dextrose, calcium sulfate, microcrystalline cellulose.

**CONTAINS: WHEAT**

# FINISHED PRODUCT SPECIFICATION

**Document:** Research and Development

**Effective Date:** 06/27/2023

**Program:** Specification Program

**Revised By:** Nancy Zuniga

**Location:** GH/KRONOS

## NUTRITIONALS PER SERVING SIZE

Recommend Serving Size: 1 Pita - 2.5 oz. (71 g)

<b>Nutrition Facts</b>	
10 servings per container	
<b>Serving size</b>	<b>1 Pocket (71g)</b>
<b>Amount per serving</b>	
<b>Calories</b>	<b>160</b>
	<b>% Daily Value*</b>
<b>Total Fat</b> 0.5g	<b>1%</b>
Saturated Fat 0g	<b>0%</b>
Trans Fat 0g	
<b>Cholesterol</b> 0mg	<b>0%</b>
<b>Sodium</b> 280mg	<b>12%</b>
<b>Total Carbohydrate</b> 32g	<b>12%</b>
Dietary Fiber 4g	<b>14%</b>
Total Sugars 0g	
Includes 0g Added Sugars	<b>0%</b>
<b>Protein</b> 7g	
Vitamin D 0mcg	0%
Calcium 54mg	4%
Iron 2mg	10%
Potassium 124mg	2%
Thiamin 0.3mg	25%
Riboflavin 0.1mg	8%
*The % Daily Value tells you how much a nutrient in a serving of food contributes to a daily diet. 2,000 calories a day is used for general nutrition advice.	
Calories per gram: Fat 9 • Carbohydrate 4 • Protein 4	

### NUTRIENT CONTENT CLAIMS PER SERVING SIZE:

Low Fat  
 Free of Saturated Fat  
 Free of Cholesterol  
 Free of Sugar  
 Good source of Fiber  
 High Vitamin B-1  
 Good source of Vitamin B-3  
 Good source of Folate  
 Good source of Biotin  
 Good source of Phosphorus  
 Good source of Magnesium  
 Good source of Iron  
 High Selenium

## ALLERGENS AND OTHER SENSITIVE INGREDIENTS

ALLERGEN	Column I Present in the Product	Column II Present in other products manufactured on the same line	Column III Present in the same manufacturing plant
Peanut	NO	NO	NO
Tree Nuts	NO	NO	NO
Milk and Dairy Products	NO	NO	NO
Eggs	NO	NO	NO
Fish	NO	NO	NO
Shellfish and Molluscs	NO	NO	NO
Soy	NO	NO	NO
Wheat	YES	YES	YES
Sulfites, e.g., sulfur dioxide and sodium metabisulfites, etc	NO	NO	NO
Monosodium Glutamate (MSG)	NO	NO	NO

# FINISHED PRODUCT SPECIFICATION

**Document:** Research and Development

**Effective Date:** 06/27/2023

**Program:** Specification Program

**Revised By:** Nancy Zuniga

**Location:** GH/KRONOS

## NUTRITIONALS VALUES (100g UNROUNDED)

**Product:** Pocket Pita Pre-cut 6" Whole Wheat

Nutrients	Per 100g	Nutrients	Per 100g	Nutrients	Per 100g	Nutrients	Per 100g
<b>Basic Components</b>		Trans Fatty Acid (g)	0.00	Vitamin B12 (mcg)	0.00	Magnesium (mg)	58.47
Gram Weight (g)	100.00	Cholesterol (mg)	0.00	Biotin (mcg)	1.67	Manganese (mg)	1.54
Calories (kcal)	228.90	Water (g)	41.7	Vitamin C (mg)	0.00	Molybdenum (mcg)	0.00
Calories from Fat (kcal)	7.50	Ash (g)	0.00	Vitamin D - IU (IU)	0.00	Phosphorus (mg)	172.98
Calories from SatFat (kcal)	1.50	Insoluble Fiber (g)	0.00	Vitamin D - mcg (mcg)	0.00	Potassium (mg)	175.12
Protein (g)	9.68	<b>Vitamins</b>		Vitamin E - Alpha-Toco (mg)	0.27	Selenium (mcg)	24.41
Carbohydrates (g)	45.65	Vitamin A - IU (IU)	0.00	Folate (mcg)	54.54	Sodium (mg)	394.93
Dietary Fiber (g)	5.30	Vitamin A - RE (RE)	0.24	Folate, DFE (mcg)	16.66	Zinc (mg)	1.18
Soluble Fiber (g)	0.81	Vitamin A - RAE (RAE)	0.12	Vitamin K (mcg)	0.72	Chloride (mg)	0.00
Total Sugars (g)	0.47	Carotenoid RE (RE)	0.24	Pantothenic Acid (mg)	0.34	<b>Poly Fats</b>	
Monosaccharides (g)	0.00	Retinol RE (RE)	0.00	<b>Minerals</b>		Omega 3 Fatty Acid (g)	0.03
Disaccharides (g)	0.00	Beta-Carotene (mcg)	1.34	Calcium (mg)	75.64	Omega 6 Fatty Acid (g)	0.43
Other Carbs (g)	23.38	Vitamin B1 (mg)	0.28	Chromium (mcg)	0.01	<b>Other Nutrients</b>	
Fat (g)	0.83	Vitamin B2 (mg)	0.13	Copper (mg)	0.16	Alcohol (g)	0.00
Saturated Fat (g)	0.17	Vitamin B3 (mg)	2.42	Fluoride (mg)	0.03	Caffeine (mg)	0.00
Mono Fat (g)	0.18	Vitamin B3 - Niacin Equiv (mg)	2.23	Iodine (mcg)	0.00	Choline (mg)	11.82
Poly Fat (g)	0.47	Vitamin B6 (mg)	0.12	Iron (mg)	2.63		

# FINISHED PRODUCT SPECIFICATION

**Document:** Research and Development

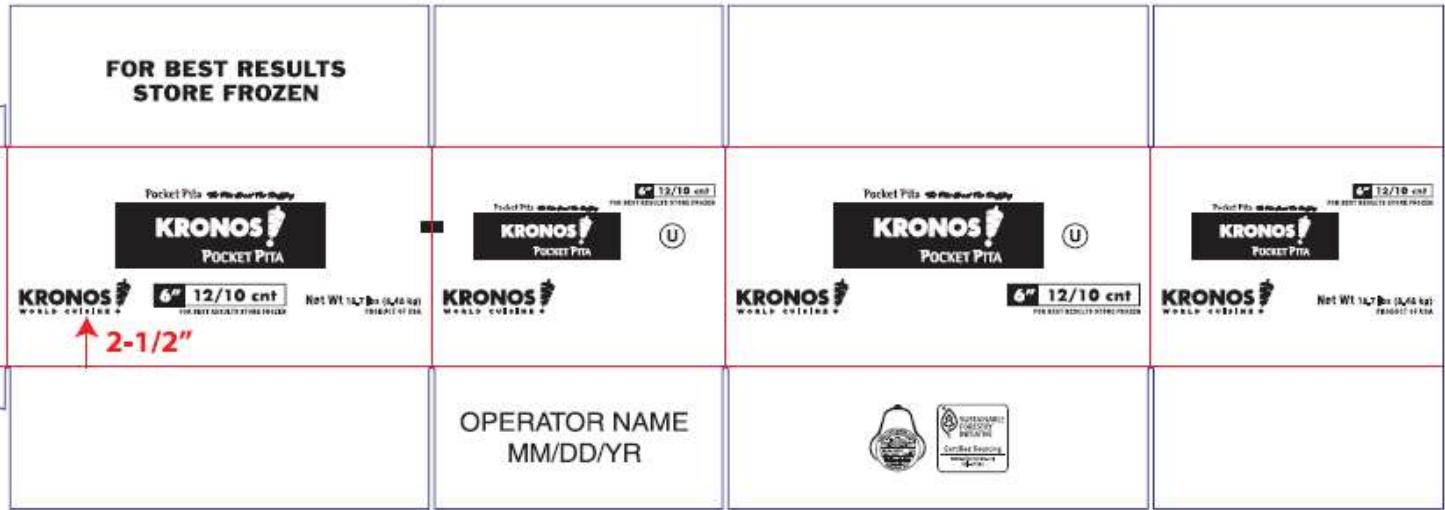
**Effective Date:** 06/27/2023

**Program:** Specification Program

**Revised By:** Nancy Zuniga

**Location:** GH/KRONOS

## MASTER CASE



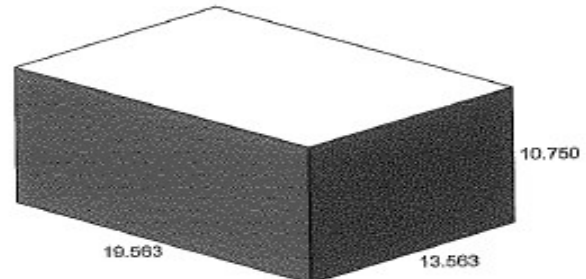
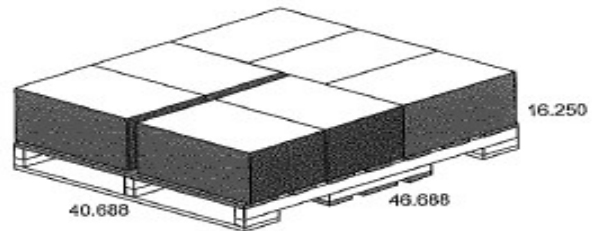
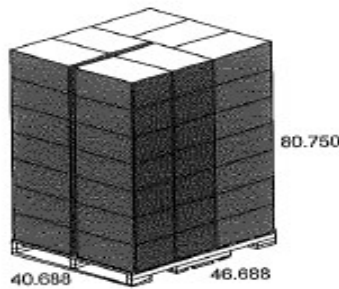
## PALLET PATTERN

Friday, October 12, 2012

Product Name TOUFAYAN BAKERY  
 Product Code 2222 KRONOS  
 Datafile Name 2222 kronos (10/12/2012)  
 Load Ref. 1 I  
 Cube Used 88.2 %  
 Area Used 96.7 %  
 Pallet type 48x40

7 Case / Layer  
 7 Layer / Load  
 49 Case / Load

	Length	Width	Height	Net	Gross	Volume
Case (ID)	19.188	13.188	10.000 in	20.000	20.000 lb	1.46 cuft
Case (OD)	19.563	13.563	10.750 in	20.000	20.000 lb	1.65 cuft
Product	46.688	40.688	75.250 in	980.000	980.000 lb	82.72 cuft
Load	48.000	40.688	80.750 in	980.000	1030.000 lb	91.27 cuft
Overhang	-0.656	0.344	in			



CAPE PALLET LAYOUT  
 Prepared By Bell Container Corp.

\*\*\* FOR PALLET PATTERN GUIDE ONLY \*\*\*